

# SECTION FOUR

# Contacts & Information



## THE NATIONAL PARKS IN SCOTLAND

### **Cairngorms National Park Authority**

Alan Smith, Outdoor Learning Officer  
Cairngorms National Park Authority  
14, The Square, Grantown on Spey  
Moray PH26 3HG  
Phone: 01479-870518  
E-mail: [alansmith@cairngorms.co.uk](mailto:alansmith@cairngorms.co.uk)

### **Contacting Inclusive Cairngorms**

Elsbeth Grant, Social Inclusion Officer  
Cairngorms National Park Authority  
14, The Square, Grantown on Spey  
Moray PH26 3HG  
Phone: 01479-870506  
E-mail: [elsbethgrant@cairngorms.co.uk](mailto:elsbethgrant@cairngorms.co.uk)

### **Contacting Rangers Services**

Contact details for Ranger Services on  
'Enjoying' page of the CNPA website at  
[www.cairngorms.co.uk/thepark/enjoying](http://www.cairngorms.co.uk/thepark/enjoying) or

Pete Crane, Senior Visitor Services Officer  
Cairngorms National Park Authority  
14, The Square, Grantown on Spey  
Moray PH26 3HG  
Phone: 01479-870532  
E-mail: [petercrane@cairngorms.co.uk](mailto:petercrane@cairngorms.co.uk)

### **Online links**

MAIN WEBSITE [www.cairngorms.co.uk](http://www.cairngorms.co.uk)

LEARNING For learning opportunities in the Park  
the link is [www.cairngorms.co.uk/learning](http://www.cairngorms.co.uk/learning)

USEFUL INFORMATION Click on 'The Park' section  
on the website

PUBLICATIONS For a PDF version of this resource,  
the link is [www.cairngorms.co.uk/learning](http://www.cairngorms.co.uk/learning)

E-BULLETIN Click on the e-bulletin button on  
the main website to sign up for regular news  
updates

VIDEO For a video of the Cairngorms National  
Park the link is [www.cairngorms.co.uk/  
thepark/video](http://www.cairngorms.co.uk/thepark/video)

MAP For a map of the area the link is  
[www.cairngorms.co.uk/thepark/maps  
/map\\_medium.php](http://www.cairngorms.co.uk/thepark/maps/map_medium.php)

### **Loch Lomond and The Trossachs National Park**

Alison Wilkie, Learning Development Adviser  
Loch Lomond & The Trossachs National  
Park Authority  
Carrochan, Carrochan Rd  
Balloch G83 8EG  
Phone: 01389 722 125  
E-mail: [alison.wilkie@lochlomond-trossachs.org](mailto:alison.wilkie@lochlomond-trossachs.org)

### **Contacting Rangers Services**

The Ranger Service can be contacted at any  
of the following addresses:

Argyll Area Office  
Ballochyle, Sandbank  
Dunoon PA28 8RD  
Tel 01369 705300

National Park Centre Luss  
Luss Car Park  
Luss G83 8PA  
Tel 01389 722120

Callander Area Office  
52-54 Main Street  
Callander FK17 8BD  
Tel 01389 722126

Loch Lomond Water Team  
Duncan Mills Memorial Slipway  
Pier Road, Balloch G83 8QX  
Tel 01389 722030

National Park Centre Balmaha  
Balmaha Car Park  
Balmaha G63 0JQ  
Tel 01389 722100

## Online links

MAIN WEBSITE [www.lochlomond-trossachs.org](http://www.lochlomond-trossachs.org)

LEARNING Visit the Learning pages for information in organising a visit with a school or group at [www.lochlomond-trossachs.org/learning/](http://www.lochlomond-trossachs.org/learning/)

USEFUL INFORMATION Click on the 'visitors' section on the website for lots of useful information

PUBLICATIONS For a PDF version of this resource, the link would be: [www.lochlomond-trossachs.org/looking-after/publications/menu-id-380.html](http://www.lochlomond-trossachs.org/looking-after/publications/menu-id-380.html)

VOLUNTEERING Visit the 'Volunteering' page for information about the many volunteering opportunities available throughout the National Park and to contact the Volunteer Manager. [www.lochlomond-trossachs.org/lookin-after/volunteering-in-the-national-park/menu-id-384.html](http://www.lochlomond-trossachs.org/lookin-after/volunteering-in-the-national-park/menu-id-384.html).

RANGER SERVICE Visit the Learning page and click on Ranger Service for their contact details [www.lochlomond-trossachs.org/learning/contact-us/menu-id-128.html](http://www.lochlomond-trossachs.org/learning/contact-us/menu-id-128.html)

MAP For an interactive map the link is [www.lochlomond-trossachs.org/interactive-map.html](http://www.lochlomond-trossachs.org/interactive-map.html)

## SNH

### Scottish Natural Heritage

Main website [www.snh.org.uk](http://www.snh.org.uk) for general info on SNH and its activities.

USEFUL INFORMATION Click on the 'about SNH' section on the website. For a PDF version of this resource, the link is [www.snh.org.uk/about/ab-main2007.asp](http://www.snh.org.uk/about/ab-main2007.asp)

To find out about NNR's visit [www.nnr-scotland.org.uk](http://www.nnr-scotland.org.uk)

## PACKAGED EXPERIENCES

### ANPA

Educational materials for learning about Britain's National Parks [www.nationalparks.gov.uk/learningabout](http://www.nationalparks.gov.uk/learningabout)

### Duke of Edinburgh's Award

[www.dofe.org](http://www.dofe.org)

Click on 'running the DofE' section.

For a PDF version of this resource, the link is [www.dofe.org/en/content/cms/Leaders/DofE\\_programmes/DofE\\_programmes.aspx](http://www.dofe.org/en/content/cms/Leaders/DofE_programmes/DofE_programmes.aspx)

### EUROPARC Junior Ranger Programme

[www.europarc.org](http://www.europarc.org)

Click on 'what we do' and then the 'junior ranger' section. For a PDF version of this resource, the link is [www.europarc.org/what-we-do/junior-ranger](http://www.europarc.org/what-we-do/junior-ranger)

### Fairbridge

[www.fairbridge.org.uk](http://www.fairbridge.org.uk)

Click on the section under the 'where we work' section and then choose Scotland for information. For a PDF version of this resource, the link is [www.fairbridge.org.uk/scotland/](http://www.fairbridge.org.uk/scotland/)

### Forestry Commission Scotland

[www.forestry.gov.uk/Scotland](http://www.forestry.gov.uk/Scotland)

Click on 'woodlands for learning' section for helpful guides and information. For a PDF version of this resource, the link is [www.forestry.gov.uk/website/fchomepages.nsf/hp/Scotland](http://www.forestry.gov.uk/website/fchomepages.nsf/hp/Scotland)

### John Muir Trust and Award

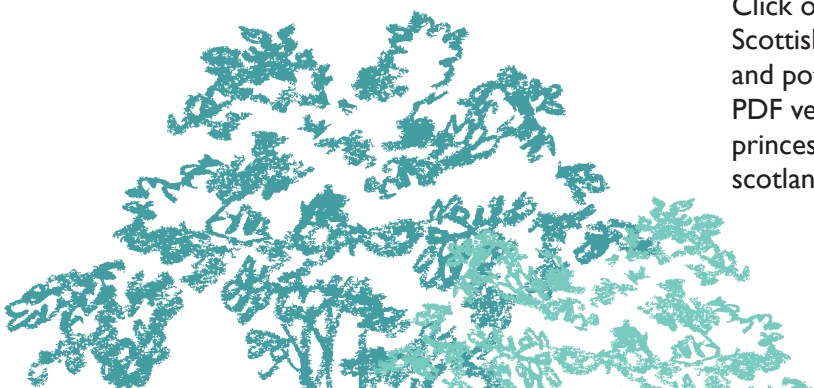
[www.johnmuiraward.org](http://www.johnmuiraward.org)

Click on 'about the award' section. For packaged experiences go to [www.jmt.org/jmaward-home.asp](http://www.jmt.org/jmaward-home.asp). For the website of the John Muir Trust go to [www.jmt.org](http://www.jmt.org) For a PDF version of this resource, the link is [www.jmt.org/jmaward-about-the-award.asp](http://www.jmt.org/jmaward-about-the-award.asp)

### The Prince's Trust

[www.princes-trust.org.uk](http://www.princes-trust.org.uk)

Click on the 'need help' section and go to the Scottish page for lots of information on support and potential funding opportunities. For a PDF version of this resource, the link is [www.princes-trust.org.uk/need\\_help/in\\_your\\_region/scotland.aspx](http://www.princes-trust.org.uk/need_help/in_your_region/scotland.aspx)



### **Venture Trust**

[www.venture-trust.org.uk](http://www.venture-trust.org.uk)

Click on the section under the 'information for' page that applies best to you. For a PDF version of this resource, the link is [www.venture-trust.org.uk/](http://www.venture-trust.org.uk/)

### **BTCV British Trust for Conservation Volunteers**

[www.btcv.org](http://www.btcv.org)

Information on volunteering opportunities and training courses in your local area.

### **North York Moors National Park**

This has a whole range of information on how to package experiences for trips by individuals of different ages and abilities. [www.northyorkmoors.org.uk/content.php?nID=25](http://www.northyorkmoors.org.uk/content.php?nID=25)

### **YouthLink Scotland**

Take a look at Youthlink Scotland publications [www.youthlink.co.uk/Index.asp?MainID=7270](http://www.youthlink.co.uk/Index.asp?MainID=7270)

### **Youth Scotland**

Live It To The Limits provides ideas and activities for projects looking at the natural, social and economic environment [www.youthscotland.org.uk/resources/publications.htm](http://www.youthscotland.org.uk/resources/publications.htm)

## SCHOOLS

### **Teachernet**

[www.teachernet.gov.uk/](http://www.teachernet.gov.uk/) provides a range of information and resources to assist staff in schools to make use of the outdoors when supporting pupil's learning. Just type in 'outdoors' in the search box on their home page.

### **Eco Schools**

[www.eco-schools.org.uk/](http://www.eco-schools.org.uk/) provide a range of resources and information to support environmental education within schools.

### **Learning and Teaching Scotland**

A selection of the best online learning resources, specifically selected and organised for Scottish education [www.ltscotland.org.uk/resources/index.asp?strReferringChannel=ltscotland](http://www.ltscotland.org.uk/resources/index.asp?strReferringChannel=ltscotland)

### **GLOW**

Glow is the world's first national intranet for education. It provides tools to underpin Curriculum for Excellence learning and teaching approaches. There is a National Parks Glow group on the Outdoor Learning national site. [www.ltscotland.org.uk/glowscotland/index.asp](http://www.ltscotland.org.uk/glowscotland/index.asp)

### **Grounds for Learning**

On a more local level organisations like GFL can assist you in making the best use of your immediate school environment before you venture out into National Parks and NNR's. [www.gflscotland.org.uk/](http://www.gflscotland.org.uk/)

## NATIONAL BODIES

### **Learning and Teaching Scotland - Outdoor Learning**

[www.ltscotland.org.uk/outdoorlearning/index.asp](http://www.ltscotland.org.uk/outdoorlearning/index.asp). Click on any of the sections for useful information on outdoor learning from Learning and Teaching Scotland, in particular the Outdoor Learning Research menu which contains publications and latest information.

### **Scotland's National Nature Reserves**

[www.nnr-scotland.org.uk](http://www.nnr-scotland.org.uk)  
Click on 'find an NNR' section to see what is near you. For a PDF version of this resource, the link is [www.nnr-scotland.org.uk/findnnr.asp](http://www.nnr-scotland.org.uk/findnnr.asp)

### **The Real World Learning Partnership**

Provides a range of articles and information as well as links to a number of organisations supporting outdoor learning. [www.realworldlearning-scotland.org.uk/index.asp?pageid=79340](http://www.realworldlearning-scotland.org.uk/index.asp?pageid=79340)

### **Natural England**

[www.naturalengland.org.uk](http://www.naturalengland.org.uk)  
Provides information on SNH's sister organisation, Natural England and English NNR's.

### **UK National Parks**

[www.nationalparks.gov.uk](http://www.nationalparks.gov.uk)  
Provides links to all of the UK's National Parks [www.nationalparks.gov.uk/learningabout](http://www.nationalparks.gov.uk/learningabout)

### **Scottish Environment Protection Agency (SEPA)**

[www.sepa.org.uk](http://www.sepa.org.uk)

Click on the 'about us' section for information. For a PDF version of this resource, the link is [www.sepa.org.uk/about\\_us.aspx](http://www.sepa.org.uk/about_us.aspx)

## TRANSPORT

### **Community Transport Association (Scotland office)**

[www.ctauk.org](http://www.ctauk.org)

The CTA is a rapidly growing national charity giving voice and providing leadership, learning and enterprise support to a wide range of organisations delivering innovative and flexible transport solutions to achieve social change in their communities.

### **Transport Scotland**

[www.transportscotland.gov.uk](http://www.transportscotland.gov.uk)

Click on the 'concessionary travel' section for information on reduced rate travelling for some groups. For a PDF version of this resource, the link is [www.transportscotland.gov.uk/concessionarytravel](http://www.transportscotland.gov.uk/concessionarytravel)

### **Traveline Scotland**

[www.travelinescotland.com](http://www.travelinescotland.com)

Click on the 'plan your route' section for help in planning your visit. For a PDF version of this resource, the link is [www.travelinescotland.com/journeyplanner/enterJourneyPlan.do](http://www.travelinescotland.com/journeyplanner/enterJourneyPlan.do)

### **Travelling around Loch Lomond & The Trossachs**

Getting to Loch Lomond & The Trossachs National Park is easy on public transport from Glasgow, Argyll and central Scotland. Train, ferry, bus and coach services offer you great value for money. Click on the link to get more information: [www.lochlomond-trossachs.org/visiting/travel/menu-id-120.html](http://www.lochlomond-trossachs.org/visiting/travel/menu-id-120.html)

### **Cairngorms Explorer**

Search online for "Cairngorms Explorer 2009" or go to [www.cairngorms.co.uk/parkauthority/publications/results.php?publicationID=148](http://www.cairngorms.co.uk/parkauthority/publications/results.php?publicationID=148)

## MANAGING RISK

### **British Trust Conservation Volunteers (BTCV)**

[www2.btcv.org.uk](http://www2.btcv.org.uk)

Click on 'search the site' and enter the keywords 'risk assessment'

### **Royal Highland Education Trust**

Risk assessment templates and other information is available from [www.rhet.org.uk/EZEdit/view.asp?MID=93](http://www.rhet.org.uk/EZEdit/view.asp?MID=93);

### **Duke Of Edinburgh Risk Management Guidance**

Check out the following link for all kinds of risk categories such as child protection and volunteer checks [www.theaward.com.au/Risk-Management.html](http://www.theaward.com.au/Risk-Management.html)

### **Health and Safety Executive (HSE)**

Health and Safety Executive guidance and information for planning educational visits: [www.hse.gov.uk/services/education/information.htm](http://www.hse.gov.uk/services/education/information.htm). Publications on Risk Assessments [www.hse.gov.uk/pubns/raindex.htm](http://www.hse.gov.uk/pubns/raindex.htm).

### **The Institute of Risk Management**

[www.theirm.org](http://www.theirm.org)

The Institute of Risk Management (IRM) is risk management's leading international professional education and training body. The Institute provides high quality education, training and professional development in risk management at a range of levels, from introductory to expert

### **Learning and Teaching Scotland**

This section has a link to the Scottish Executive Education Department's useful safety guidance for educational excursions. The individual contacts should be able to help you identify what you need to know locally and who can help, support or advise you with safety arrangements and risk assessment. [www.ltscotland.org.uk/outdoorlearning/about/outdoorsafety/index.asp](http://www.ltscotland.org.uk/outdoorlearning/about/outdoorsafety/index.asp)

## SUPPORTING INTEREST

**The Institute for Outdoor Learning** encourages outdoor learning by developing quality, safety and opportunity to experience outdoor activity provision and by supporting and enhancing the good practice of those who work in the outdoors. [www.outdoor-learning.org](http://www.outdoor-learning.org)

### **Learning and Teaching Scotland**

An up-to-date calendar of events and training opportunities across the country, including those run by Learning and Teaching Scotland, local authority courses and events by a range of organisations with an interest in taking learning outdoors. [www.ltscotland.org.uk/outdoorlearning/professionaldevelopment/index.asp](http://www.ltscotland.org.uk/outdoorlearning/professionaldevelopment/index.asp). Key organisations supporting Outdoor Learning in Scotland [www.ltscotland.org.uk/outdoorlearning/keyinformation/keyorganisations/index.asp](http://www.ltscotland.org.uk/outdoorlearning/keyinformation/keyorganisations/index.asp)

### **All about CPD**

All about continuing professional development (CPD) and what it can do for you. Also includes information about CPD Scotland, its aims, and the tools that are available [www.ltscotland.org.uk/cpdscotland/index.asp](http://www.ltscotland.org.uk/cpdscotland/index.asp)

### **Children and Nature**

For help on getting children and those who work with children motivated [www.childrenandnature.org/](http://www.childrenandnature.org/)

### **Destination Management Organisations**

In Aviemore and Deeside, DMOs are Scotland's first private-sector led destination not-for-profit management organisations whose activities are directed towards community benefits from tourism. Both have evolved with the support of public sector and community interest groups. Aviemore & the Cairngorms Destination Management Ltd is led by a Board of Directors from local businesses driven by their corporate social responsibility. Here is the link to what they are rural.carnegieuktrust.org.uk/rarp/sustainable\_assets/aviemore\_and\_the\_cairngorms\_destination\_management\_organisation. Here is the link to the full site [www.visitaviemore.com](http://www.visitaviemore.com). The Deeside one is [www.discoverroyaldeeside.com](http://www.discoverroyaldeeside.com).

## OUTDOORS EQUIPMENT

In most areas voluntary and community groups can hire outdoor equipment and clothing at very reasonable rates. If you are looking for items like camping gear, waterproofs, boots, bikes, canoes, climbing gear, and/or outdoor instruction, contact your local authority or Outdoor Education Service for more information.

## WEATHER

### **BBC Outdoor Weather Site**

[www.bbc.co.uk/scotland/outdoors/weather](http://www.bbc.co.uk/scotland/outdoors/weather)

## MAGAZINES AND NEWSLETTERS

### **Cairngorms National Park Information**

For a range of publications, newsletters and to sign up for the Cairngorms e-bulletin, go to [www.cairngorms.co.uk](http://www.cairngorms.co.uk).

### **Loch Lomond and The Trossachs National Park Information**

For a range of magazines and newsletters that will help you find out more about Loch Lomond and The Trossachs National Park go to [www.lochlomond-trossachs.org/looking-after/publications/menu-id-380.html](http://www.lochlomond-trossachs.org/looking-after/publications/menu-id-380.html)

National Park videos and interactive maps  
See more of the Cairngorms National Park on video using the following weblink [www.cairngorms.co.uk/thepark/video/](http://www.cairngorms.co.uk/thepark/video/) or click on the following for a map of the area [www.cairngorms.co.uk/thepark/maps/map\\_medium.php](http://www.cairngorms.co.uk/thepark/maps/map_medium.php)

See more of the Lomond and The Trossachs National Park using an interactive map available from the following weblink [www.lochlomond-trossachs.org/interactive-map.html](http://www.lochlomond-trossachs.org/interactive-map.html)

### **Scottish Natural Heritage**

To find out more about the publications available from SNH go to [www.snh.org.uk/pubs](http://www.snh.org.uk/pubs). To view a copy of SNH's quarterly magazine go to <http://www.snh.org.uk/publications/on-line/snhmagazine/default.asp>

## FUNDING

The list of potential funding sources is extensive and couldn't be covered in full here; but the list below should give you a good starting point and encourage you to see just how many funders are supportive of the kind of work that you might like to do in the National Parks and NNR's.

If you can't find something below that fits with your plans, then do check out one of the main (and FREE) online funder-finder websites. Details are provided here:

### Free Funding Website For Community And Voluntary Groups

[www.grantsnet.co.uk](http://www.grantsnet.co.uk)

GRANTnet, a straightforward free-to-use service from GRANTfinder, can help groups find suitable funding. It allows community and voluntary groups, sports and other clubs, schools, social enterprises and small businesses to search across EC and UK sources including Government departments, local authorities, charitable trusts and corporate sponsors.

### BIFFA Awards

[www.biffaward.org/home](http://www.biffaward.org/home)

The Biffaward fund offers three levels of support:

- The Small Grants Scheme provides grants between £250 and £5,000 for projects that enable communities to improve local amenities and to conserve wildlife and habitats.
- The Main Grants Scheme grants between £5,001 and £50,000 for amenity projects that provide and improve community facilities to act as mechanisms for recreation, sporting achievement, lifelong learning and community involvement. In addition it supports projects that increase or maintain biodiversity.

- The flagship scheme offers grants between £150,000 - £500,000 for larger projects that support regionally or nationally significant voluntary sector led regeneration or biodiversity projects to make a significant impact on the quality of life of the region.

Email [grant@rswt.org](mailto:grant@rswt.org) for details on the Biffaward Grant scheme.

### CSV Action Earth Campaign

SNH helps to fund Action Earth which provides small grants to assist groups in carrying out environmental projects. More details can be found at [www.actionearth.org.uk/](http://www.actionearth.org.uk/)

### Big Lottery Fund Scotland

[www.biglotteryfund.org.uk/scotland.htm](http://www.biglotteryfund.org.uk/scotland.htm)

Click on the 'funding' section for information on possible funding opportunities. For a PDF version of this resource, the link is [www.biglotteryfund.org.uk/funding-sco](http://www.biglotteryfund.org.uk/funding-sco)

### Carnegie Trust - Young Peoples Grants Programme (UK)

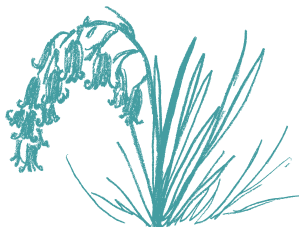
The Carnegie UK Trusts Young Peoples Grants Programme aims to support and promote young peoples participation in decision-making. Its focus is on involvement that is meaningful, benefits all participants and leads to sustainable developments in young people's participation. [www.carnegieuktrust.org.uk/](http://www.carnegieuktrust.org.uk/)

### Cash-Back For Communities Fund

The CashBack for Communities fund could help you increase youth work events and activities in your local area if it's an area of multiple deprivation and the young people you work with are between 10 and 19. More information and application forms can be found at [www.youthlink-scotland.org/Index.asp?MainID=8276](http://www.youthlink-scotland.org/Index.asp?MainID=8276)

### Coalfields Regeneration Trust

The Coalfields Regeneration Trust supports projects that help transform Britain's former coalfield communities. Grants from the 'community chest' fund supports small organisations while they are also open to requests for up to £300,000 for bigger voluntary, community and statutory organisations. [www.coalfields-regen.org.uk/applyingforfunds/default.asp](http://www.coalfields-regen.org.uk/applyingforfunds/default.asp)



### **Community Cash Awards**

Young people aged 14-25 can apply for awards between £250 and £5,000 to help tackle the dangers of drugs, crime and play a positive role in their community. The Royal Bank of Scotland Community Cash Awards will see £1 million of grants being distributed by youth charity, The Prince's Trust. Applications can be made at any time. [www.princes-trust.org.uk/need\\_help/grants/community\\_cash\\_awards.aspx](http://www.princes-trust.org.uk/need_help/grants/community_cash_awards.aspx)

### **Heritage Lottery Fund**

The Heritage Lottery Fund operates "Your Heritage" and "Young Roots" small community grants programmes. [www.hlf.org.uk/InYourArea/Scotland/Pages/WelcomeScotland.aspx](http://www.hlf.org.uk/InYourArea/Scotland/Pages/WelcomeScotland.aspx)

### **Landfill Communities Fund**

The Government saw the Landfill Communities Fund as a way for Landfill Operators and Environmental Bodies to work in partnership to create significant environmental benefits and to undertake projects which improve the lives of communities living near landfill sites. [www.entrust.org.uk/home/lcf/finding-funders](http://www.entrust.org.uk/home/lcf/finding-funders)

### **Learning and Teaching Scotland**

For help with funding sources for schools [www.ltscotland.org.uk/healthpromotingschools/practitioners/makingithappen/sourcesoffunding.asp](http://www.ltscotland.org.uk/healthpromotingschools/practitioners/makingithappen/sourcesoffunding.asp)

### **LEADER**

The LEADER programme is a European Community Initiative for helping rural communities improve the economy and quality of life in their local area. Local development plans are built around themes, defined by the European Union. These include:

- improving the quality of life in rural areas;
- making the best use of natural and cultural resources;
- and improving the organisational abilities of communities.

LEADER programme (Scotland Country Desk)  
Phone: 01356 626490  
[www.scotland.gov.uk/Topics/Business-Industry/support/17404/LEADERScotland](http://www.scotland.gov.uk/Topics/Business-Industry/support/17404/LEADERScotland)

Cairngorms National Park has its own Leader programme managed by the Cairngorms Local Action Group. [www.cairngorms-leader.org/](http://www.cairngorms-leader.org/)

Loch Lomond and The Trossachs National Park is covered by two LEADER areas. More information can be found by using the following links: [www.argyllandtheislandsleader.org.uk/index.html](http://www.argyllandtheislandsleader.org.uk/index.html) or [www.fvl.org.uk/](http://www.fvl.org.uk/)

### **Links Foundation**

[www.linksfoundation.org/Default.aspx](http://www.linksfoundation.org/Default.aspx)  
The Links Foundation funds a wide range of community-based projects in the UK. All applications must show the positive impact a project could have on a community. There is no set amount, but average awards are around £20,000. Funding can be for new or existing projects and can help meet capital and revenue costs. Applications are considered 3 times per year.

### **Paths to Health**

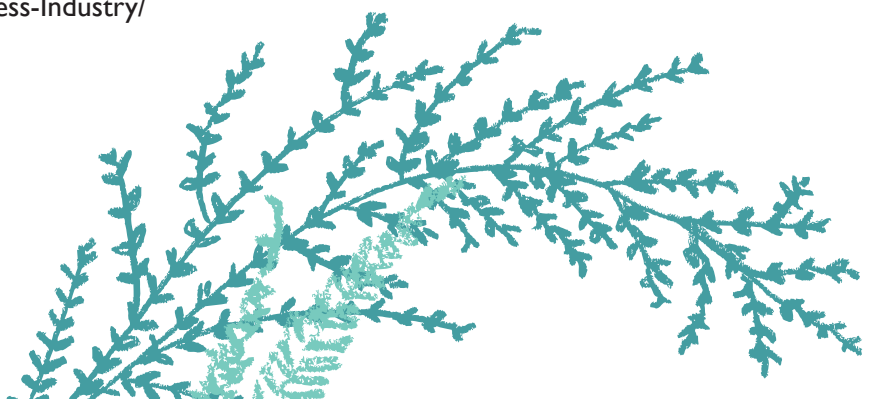
[www.pathsforall.org.uk/pathstohealth/grants.asp](http://www.pathsforall.org.uk/pathstohealth/grants.asp)  
Paths for All currently has small grant funding available. Please discuss your ideas with your local Development Officer before submitting an application. Applications for small grants have no deadlines and are welcome at any time.

### **Paul Hamlyn Foundation**

[www.phf.org.uk/default.asp](http://www.phf.org.uk/default.asp)  
The programme's objective is to support innovative ways of increasing the learning opportunities of people within the UK.

### **Scottish Arts Council**

[www.scottisharts.org.uk](http://www.scottisharts.org.uk)  
Click on the 'funding' section for possible funding options. For a PDF version of this resource, the link is [www.scottisharts.org.uk/funding.aspx](http://www.scottisharts.org.uk/funding.aspx).





An example of the kind of funding available from SAC is their Public Art Fund, which is an open application scheme with no deadlines. The scope of public art projects supported has been broadened to include temporary, permanent, cross-artform and multidisciplinary work. The Fund is aimed at attracting original proposals, from a broad range of organisations, to produce exciting and innovative public art across Scotland. To find out more about public art in Scotland visit their website [www.scottisharts.org.uk](http://www.scottisharts.org.uk)

### **Scottish Natural Heritage Grant Schemes**

SNH has its own grant schemes which can help to fund a wide range of environmental projects. More detailed information on each strand of funding can be found at [www.snh.org.uk](http://www.snh.org.uk). Examples include: SNH helps to fund Action Earth which provides small grants to assist groups in carrying out environmental projects. More details can be found at [www.actionearth.org.uk/](http://www.actionearth.org.uk/) SNH Biodiversity Awards of £250 support and encourage groups that carry practical environmental projects, creating or upgrading wildlife habitats or improving the life of Scotland's wildlife. [www.actionearth.org.uk/register250.php](http://www.actionearth.org.uk/register250.php)

### **sportscotland**

[www.sportscotland.org.uk](http://www.sportscotland.org.uk)  
Click on the 'sport in the outdoors' section for help and guidance and on the 'funding' section for possible funding opportunities (especially Sportsmatch). For a PDF version of this resource, the link is [www.sportscotland.org.uk/ChannelNavigation/Topics/TopicNavigation/Sport+in+the+outdoors/](http://www.sportscotland.org.uk/ChannelNavigation/Topics/TopicNavigation/Sport+in+the+outdoors/) and [www.sportscotland.org.uk/ChannelNavigation/Topics/TopicNavigation/Community+sport/Funding/Sportsmatch/](http://www.sportscotland.org.uk/ChannelNavigation/Topics/TopicNavigation/Community+sport/Funding/Sportsmatch/)

### **Scottish Community Foundation Awards**

Express Grants are available to community groups looking for funding of up to £2,000. The scheme has a straightforward application process, and a short turnaround time. Applications can be made at any time. [www.scottishcf.org/resources/news/view/66/introducing-scottish-community-foundation-express-grants/](http://www.scottishcf.org/resources/news/view/66/introducing-scottish-community-foundation-express-grants/)

### **Support For Woodland Projects**

Funding for local woodland projects is available through the Local Forestry Challenge Funds. Two funds are available: Woods In and Around Towns (WIAT), and Forestry for People. The WIAT Challenge Fund aims to bring urban woodland into sustainable management and improve recreation facilities by carrying out an agreed programme of work. The Forestry for People Challenge Fund covers all Scotland, including the WIAT areas. It supports local involvement in woodland projects for health, learning and strengthening communities. [www.forestry.gov.uk/forestry/infd7epeed](http://www.forestry.gov.uk/forestry/infd7epeed)

### **Scottish Community Foundation**

The Scottish Community Foundation general grants programme supports community development activities. Community Grants are one off sums of up to £5,000. The majority of the funding is directed at locally based work carried out, and often initiated by, members of that local community. Applications from smaller organisations that have an income of less than £250,000 per annum are considered. Groups can apply for either a Small Grant (up to £1,000) or a Main Grant (up to £5,000). There is no closing date for applications. Check out [www.scottishcf.org](http://www.scottishcf.org) or email [grants@scottishcf.org](mailto:grants@scottishcf.org)

### **Voluntary Action Fund**

The Voluntary Action Fund (VAF) is an independent grant-making trust which invests in voluntary and community based organisations across Scotland. The funding and support provided enables organisations to undertake projects that challenge inequalities and overcome barriers to being involved in community life. VAF receives funding from the Scottish Government to support voluntary and community organisations in taking forward social change. The grant programmes are linked by the common threads of social inclusion and support for organisations to become stronger. Each grant programme has its individual criteria and priorities as well as a direct link to government policy. Check out [www.voluntaryactionfund.org.uk](http://www.voluntaryactionfund.org.uk)

