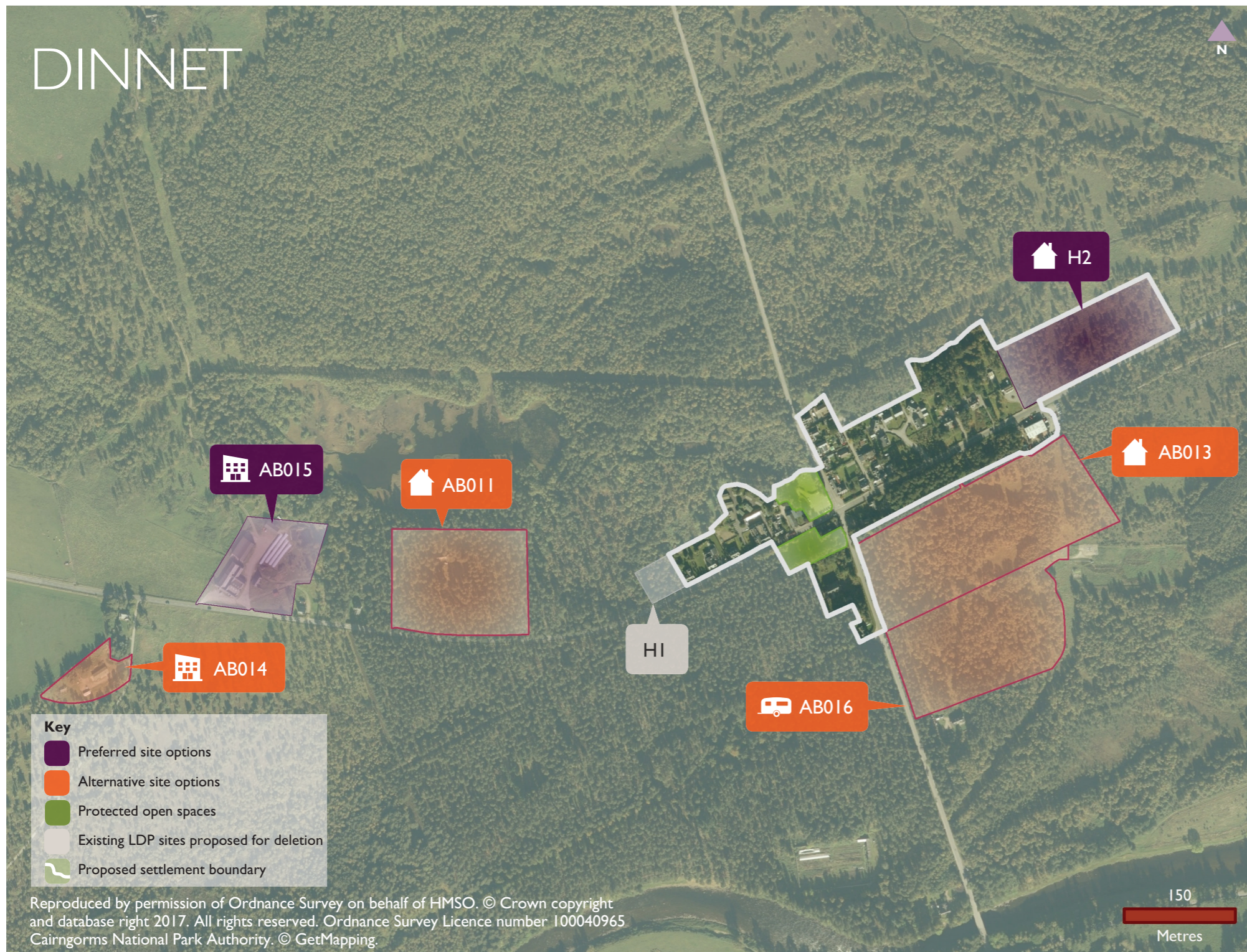


DINNET



Reproduced by permission of Ordnance Survey on behalf of HMSO. © Crown copyright and database right 2017. All rights reserved. Ordnance Survey Licence number 100040965 Cairngorms National Park Authority. © GetMapping.

DINNET is a small historic settlement in Deeside which forms an eastern gateway to the National Park. The village has a hotel and garage.

Issues for Dinnet

- Delivery of housing, including affordable housing
- Diversifying the local economy

Proposed settlement objectives

- Support the role of Dinnet as a key gateway into the National Park
- Support the delivery of housing that meets local needs, particularly affordable housing
- Support proposals for small-scale business development



Preferred Site Options

Preferred sites to be carried forward from 2015 Local Development Plan:

- H2 (land to east) for 15 houses

Sites from 2015 Local Development Plan preferred for **deletion**:

- HI (land to west) (allocated in 2015 LDP for 4 houses) due to deliverability constraints

Preferred new site allocations*:

- AB015 for economic development

Alternative Site Options (not preferred)*

- Allocate AB011 for 5 houses
- Allocate AB013 for 56 houses
- Allocate AB014 for economic development
- Allocate AB016 for tourism

* Our assessment of preferred new site allocations and alternative site options can be found in the Site Assessment Report published alongside the Main Issues Report

Consultation Questions

- Have we identified the right issues for Dinnet?
- Do you agree with the proposed settlement objectives?
- Do you agree with the preferred site options?
- Do you agree with the protected open spaces?
- Do you agree with the proposed settlement boundary?