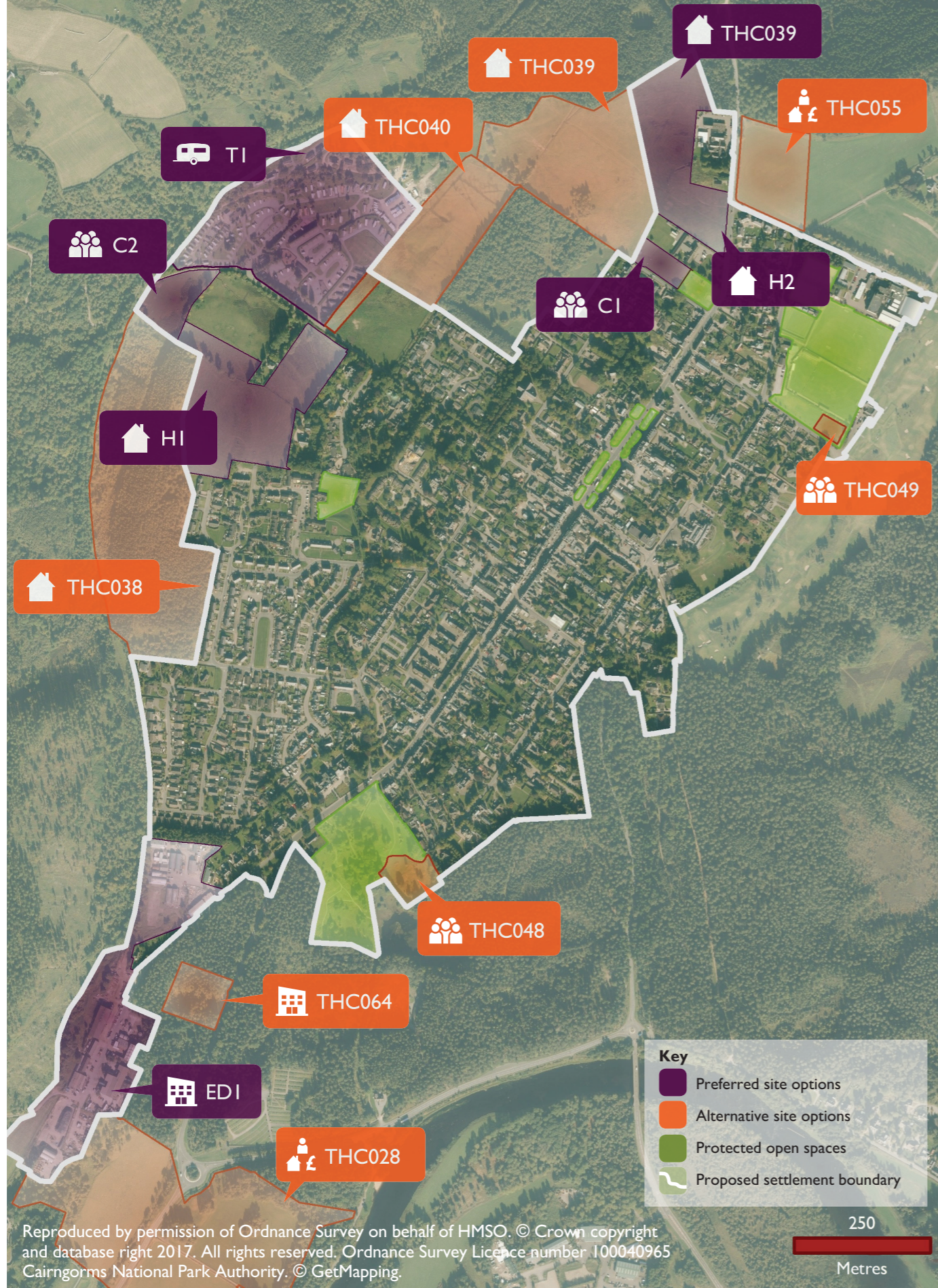


GRANTOWN-ON-SPEY



Key

- Preferred site options
- Alternative site options
- Protected open spaces
- Proposed settlement boundary

Reproduced by permission of Ordnance Survey on behalf of HMSO. © Crown copyright and database right 2017. All rights reserved. Ordnance Survey Licence number 100040965
 Cairngorms National Park Authority. © GetMapping.

Preferred Site Options

Preferred sites to be carried forward from 2015 Local Development Plan:

- H1 (Beachen Court) as an increased allocation for 53 houses (previously 50)
- H2 (Castle Road) allocated with an extension comprising part of THC039 for a total of 50 houses (previously allocated for 20)
- EDI (Woodlands Industrial Estate) for economic development
- TI (caravan park) for tourism
- CI for community use/development that supports the needs of the community

Preferred new site allocations*:

- Part of THC039 as an extension to H2 for a total of 50 houses
- C2 for the future terminus for the Speyside Railway extension

Alternative Site Options (not preferred)*

- Allocate THC028 for mixed use development
- Allocate THC038 for housing
- Allocate THC039 for housing
- Allocate THC040 for housing
- Allocate THC048 and THC049 for allotments
- Allocate THC055 for mixed use development
- Allocate THC064 for economic development

* Our assessment of preferred new site allocations and alternative site options can be found in the Site Assessment Report published alongside the Main Issues Report

Consultation Questions

- Have we identified the right issues for Granttown-on-Spey?
- Do you agree with the proposed settlement objectives?
- Do you agree with the preferred site options?
- Do you agree with the protected open spaces?
- Do you agree with the proposed settlement boundary?

GRANTOWN-ON-SPEY lies in the north of the National Park. It was designed as a planned town and is the historic capital of Strathspey. The town itself has a wide range of businesses and facilities, many of which are located along the town's High Street and main Square.

Issues for Granttown-on-Spey

- Provision of affordable housing
- Maintaining a strong local economy and attracting more visitors to the town
- Maintaining a range of community facilities
- Future re-development of the hospital for uses that benefit the community
- Delivery of the Speyside Railway extension

Proposed settlement objectives

- Protect the role of Granttown-on-Spey as a service centre for Strathspey
- Conserve and enhance Granttown's distinctive built heritage and the integrity of its Conservation Area
- Support the delivery of housing that meets local needs
- Support opportunities to increase the attraction of Granttown as a tourist and recreation destination, particularly the Speyside Railway extension
- Support proposals for business development, growth and diversification

How should Granttown-on-Spey develop in the future?

