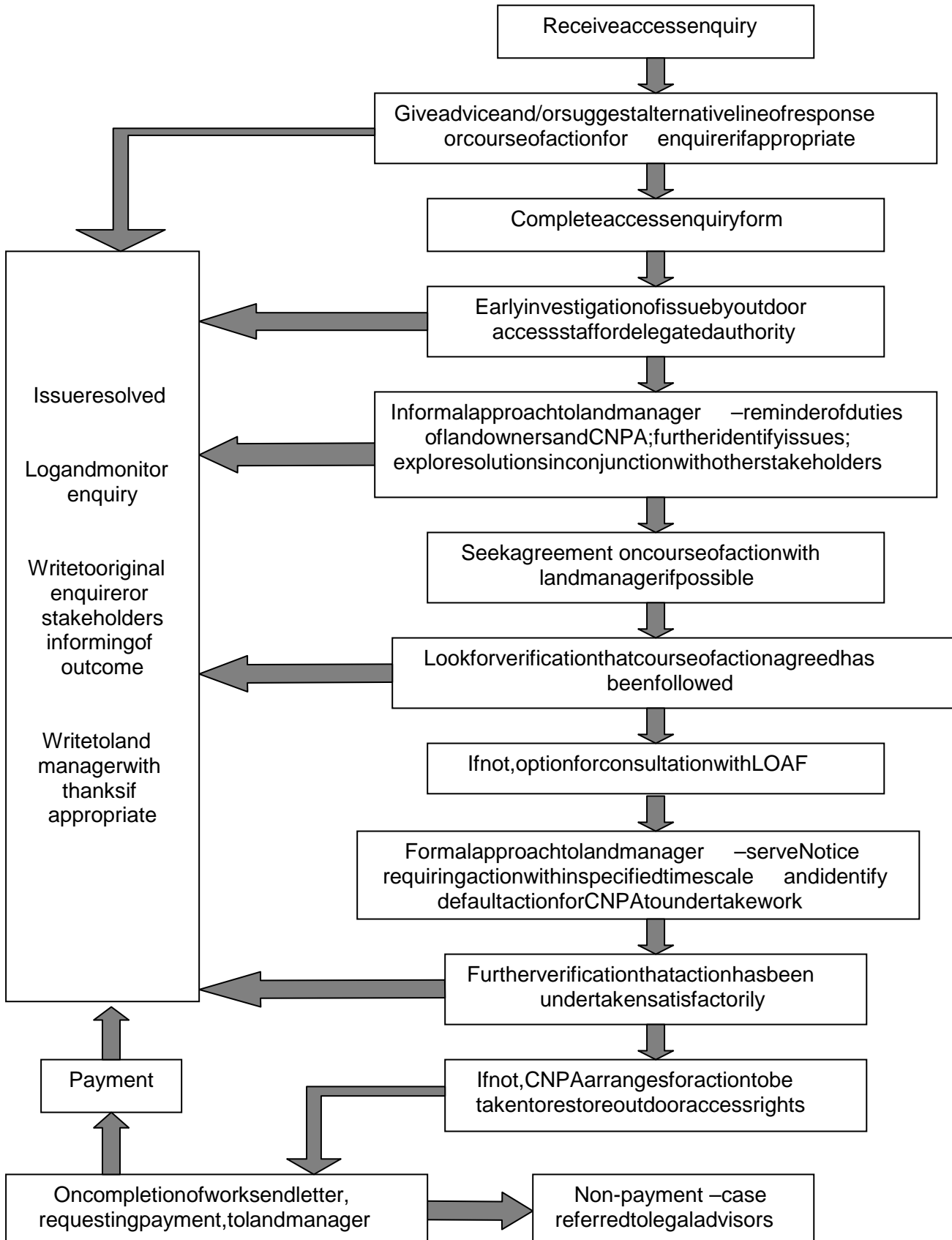


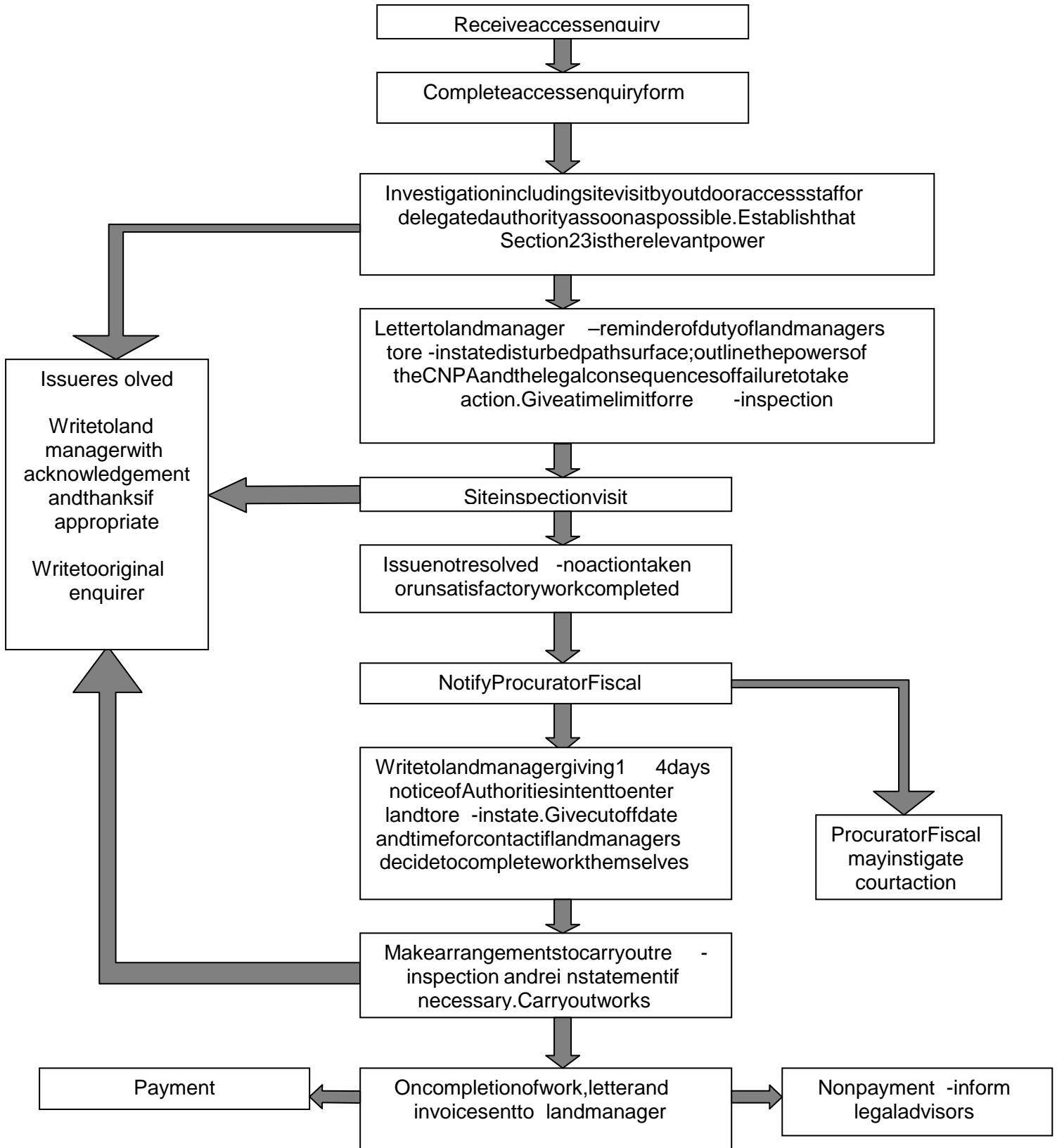
ANNEX 1 - SECTIONS 14 AND 15: UPHOLDING OUTDOOR ACCESS RIGHTS

Sections 14 and 15 gives specific power to the Park Authority to take action against land managers who utilise prohibitions signs, obstructions and dangerous impediments, etc for the main purpose of deterring or preventing the exercise of access rights.



ANNEX2 -SECTION23:REINSTATEMENTOFFPATHSURFACE

Land managers have a duty to restore within 14 days, the path surface of any core path or right of way that they disturb through ploughing or other husbandry.



ANNEX 3 - SECTION 11: ACCESS EXEMPTIONS

