



EAST  
CAIRNGORMS  
MOORLAND  
PARTNERSHIP

Jos Milner

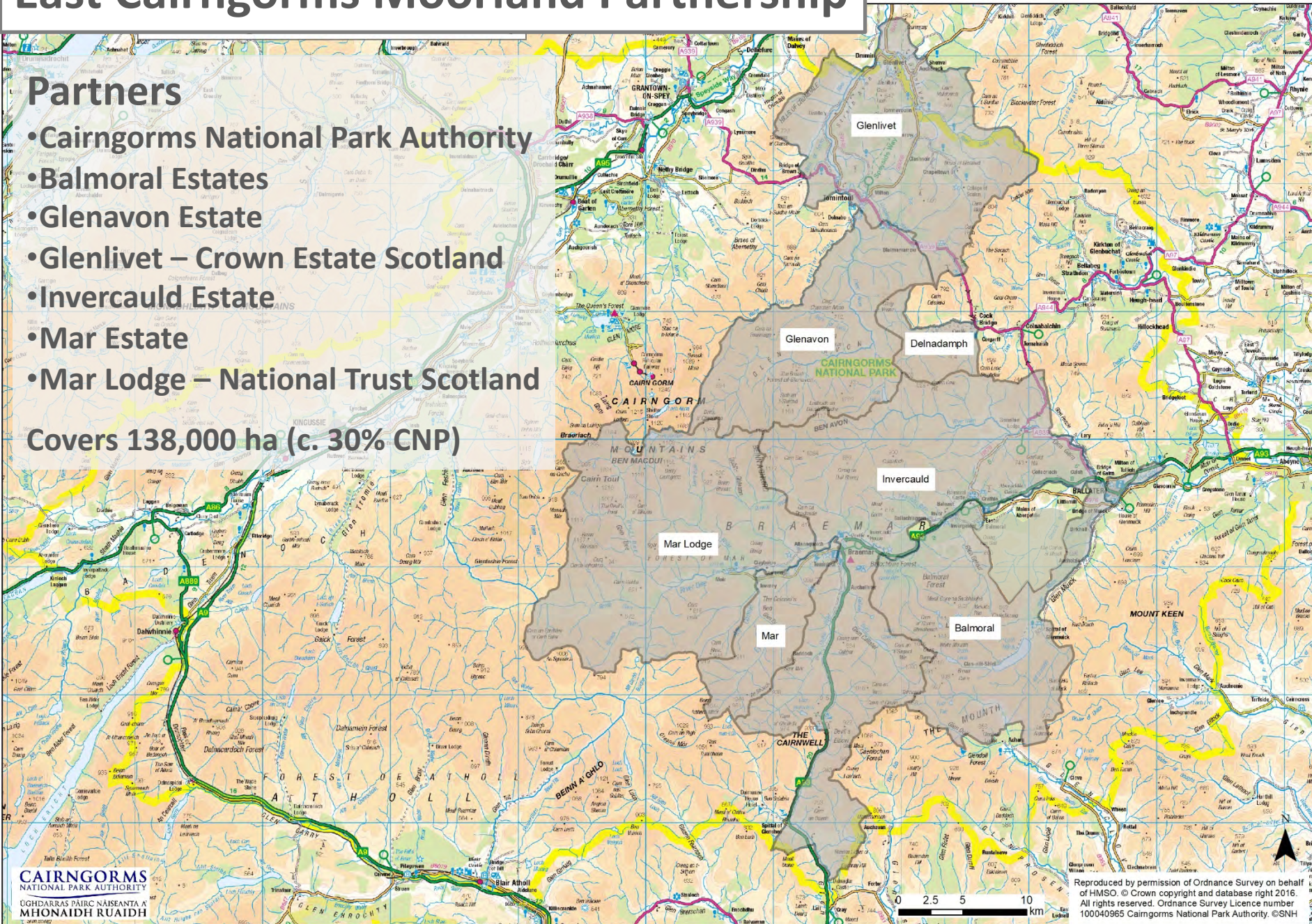


# East Cairngorms Moorland Partnership

## Partners

- Cairngorms National Park Authority
- Balmoral Estates
- Glenavon Estate
- Glenlivet – Crown Estate Scotland
- Invercauld Estate
- Mar Estate
- Mar Lodge – National Trust Scotland

Covers 138,000 ha (c. 30% CNP)





# East Cairngorms Moorland Partnership

A photograph of a stone cairn, a stack of large, moss-covered rocks, situated on a moorland landscape. The foreground is covered in brown and green vegetation. In the background, rolling hills and valleys are visible under a clear sky.

## Objective

Landscape-scale collaboration to deliver public benefits alongside private interests

- Woodland & scrub expansion
- Peatland restoration
- Landscape enhancement
- Conservation of raptors & other priority species



# East Cairngorms Moorland Partnership

## Current projects

- Wader productivity monitoring
- Mountain hare monitoring
- Raptor audit
- Mapping muirburn areas
- Identifying woodland creation opportunities
- Peatland restoration
- Public interpretation





# Wader productivity monitoring

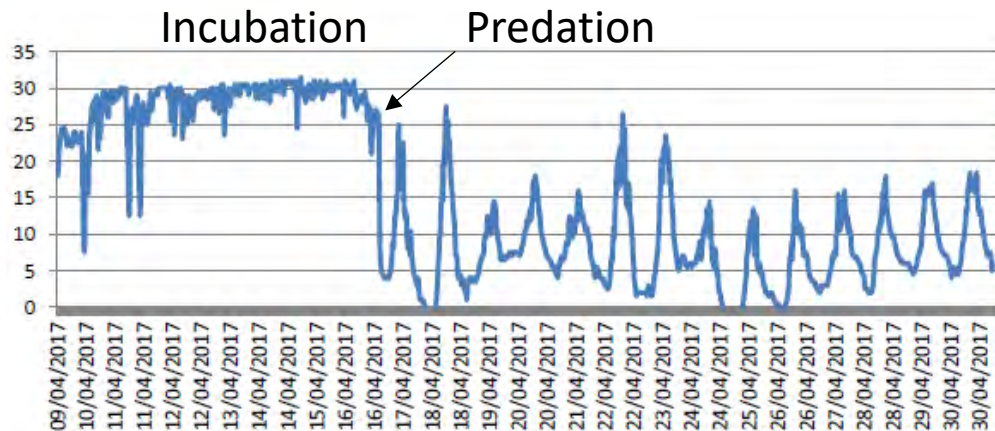
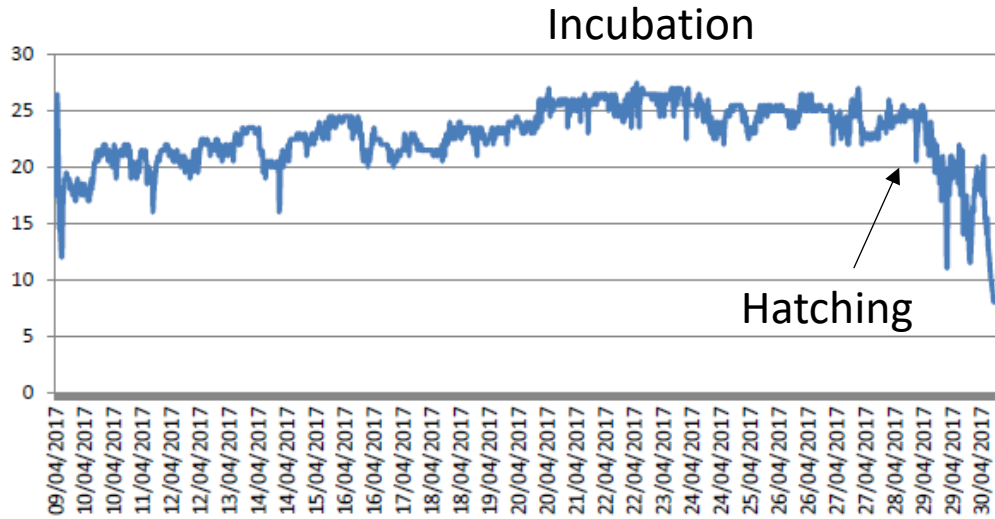




# Wader productivity monitoring



Wader nests monitored with temperature loggers





Some nests also monitored  
with wildlife cameras



M20

51°F 10°C

05-05-2018 07:26:55





M22

41°F 5°C

05-03-2018 18:55:04





M 110

39 °F 3 °C

05-23-2019 23:37:37





M28

53°F 11°C

06-09-2019 12:04:06



# Wader productivity monitoring



## Results from 2018 & 2019 seasons

Outcome	Nests
Hatched	115
Failed	54
Unknown	13
Total	183



	Outcome	
Species	Total	Hatching success
Curlew	17	75 %
Lapwing	102	54 %
Oystercatcher	59	65 %



# Wader productivity monitoring



## Results from 2018 & 2019 seasons

Cause of Failure	Total no. nests	
Abandoned / weather	8	} 13 (55%)
Agricultural operations	4	
Sheep (trampled)	1	
Sheep (predated)	1	} 11 (45%)
Badger	1	
Stoat	3	
Pine marten	3	
Jackdaw	1	
Common gull	2	

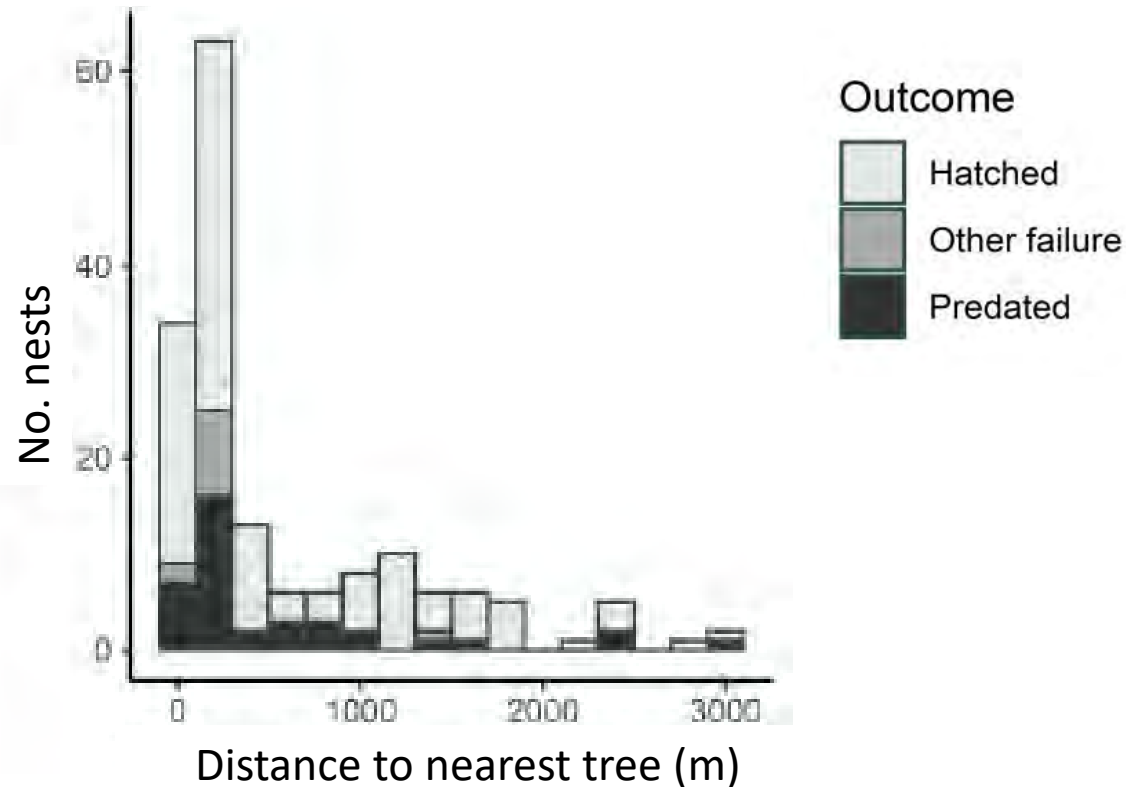
**Full report:** Jarrett, D., Calladine, J., Milner, J., Wernham C. & Wilson, M. 2019. [Investigating wader breeding productivity in the East Cairngorms Moorland Partnership Area using collaborative methods](#). Research Report no. 723. ISBN: 978-1-912642-11-3 36pp [Download Report](#) (PDF)



# Wader monitoring



## Results from 2018 & 2019 seasons



No effect of distance to trees or % woodland cover on hatching success



# Mountain Hare

## Hare monitoring

All ECMP estates have had GWCT training

## 2018 Encounter rates

Average = 16 hares / km (range 9-30 / km)  
across 10 sites covering 40 km<sup>2</sup>





# Raptors

2016-18 ECMP	No. occupied sites
Merlin	22
Golden eagle	12
Peregrine	14
Hen harrier	3
<b>TOTAL</b>	<b>51</b>





# Muirburn

A person wearing a dark jacket and a cap is working in a field of burning heath. Thick white smoke rises from the ground, partially obscuring the person and the surrounding vegetation. The background shows a line of trees under a dark sky.

## Mapping the Muirburn Code

- 88,000 ha of moorland across ECMP
- < 40 % is under rotational muirburn
- No burning on deep peat, steep slopes or wind clipped heath

## Demonstration Event

CNPA & ECMP estate staff met for discussion & demonstrations in March 2019



A landscape photograph showing rolling hills with sparse vegetation and scattered trees under a cloudy sky. The hills are covered in brownish, scrubby vegetation, and there are several clusters of green trees scattered across the slopes. The sky is overcast with grey clouds.

## Woodland expansion

- Current woodland cover approx. 10 % of ECMP
- Expansion across ECMP over last 10 yr: 1,500 ha
- Regeneration & planting over next 10 yr: 2,500 – 3,000 ha with & without fencing



## Scrub expansion

A rare ecotone at woodland / moorland edge







## Peatland restoration

- 700 ha of degraded peatland in ECMP worked on by end of 2018
- Equivalent to saving 8,667 t of CO<sub>2</sub> per year
- Further 225 ha awarded funding for 2019 but limited by contractor capacity





Scottish Natural Heritage  
Dualchas Nàdair na h-Alba

**Peatland  
ACTION**