



EAST
CAIRNGORMS
MOORLAND
PARTNERSHIP

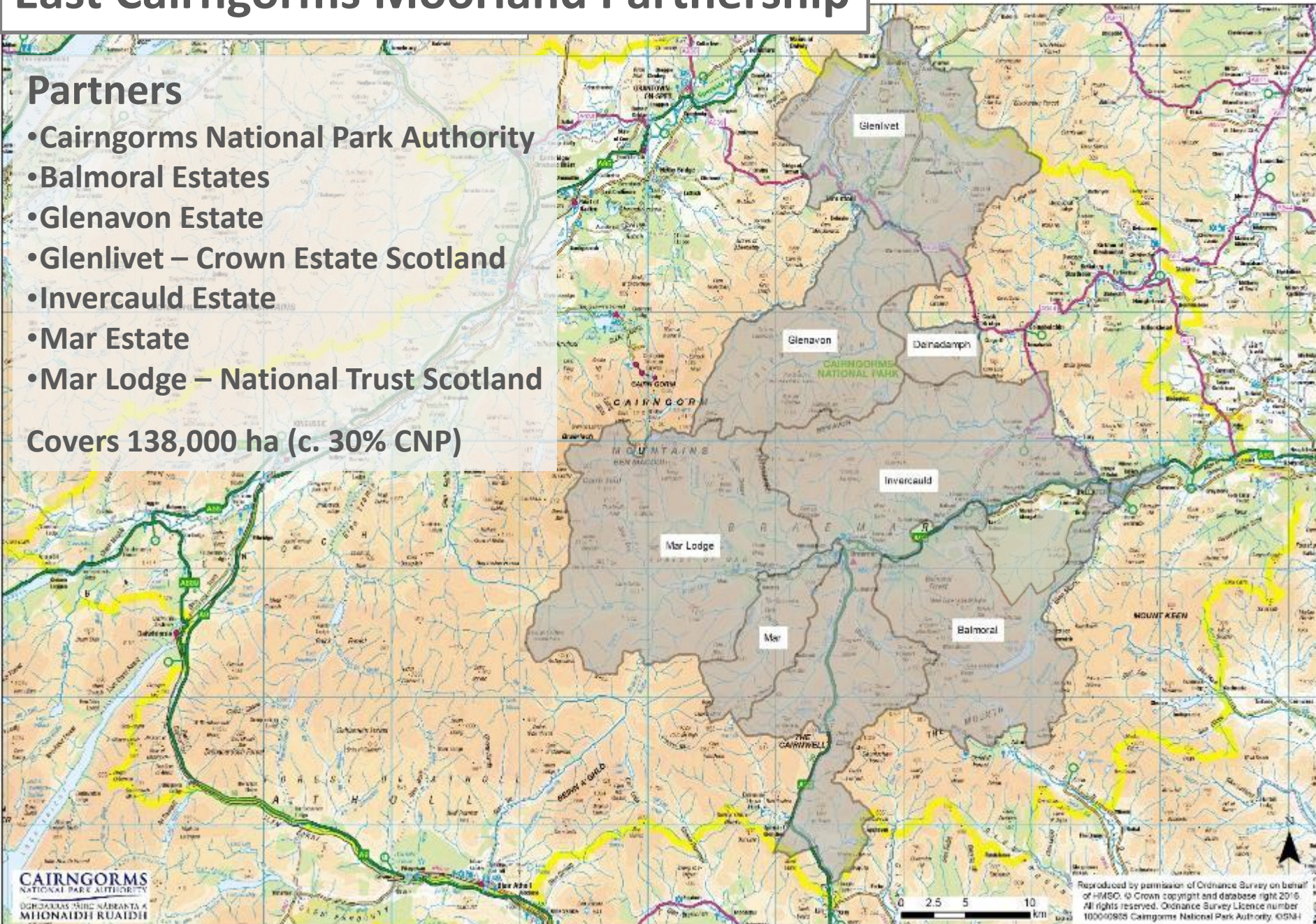
Jos Milner

East Cairngorms Moorland Partnership

Partners

- Cairngorms National Park Authority
- Balmoral Estates
- Glenavon Estate
- Glenlivet – Crown Estate Scotland
- Invercauld Estate
- Mar Estate
- Mar Lodge – National Trust Scotland

Covers 138,000 ha (c. 30% CNP)



East Cairngorms Moorland Partnership

A photograph of a stone cairn in a moorland landscape. The cairn is a stack of large, moss-covered rocks. The background shows rolling hills and moorland under a clear sky. The foreground is covered in brown and green vegetation.

Objective

Landscape-scale collaboration to deliver public benefits alongside private interests

- Woodland & scrub expansion
- Peatland restoration
- Landscape enhancement
- Conservation of raptors & other priority species

East Cairngorms Moorland Partnership

Current projects

- Wader productivity monitoring
- Mountain hare monitoring
- Raptor audit
- Mapping muirburn areas
- Identifying woodland creation opportunities
- Peatland restoration
- Public interpretation



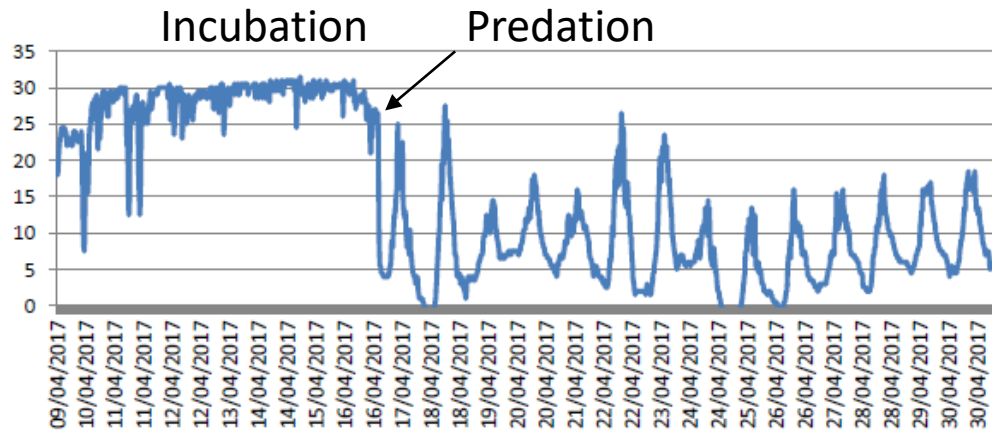
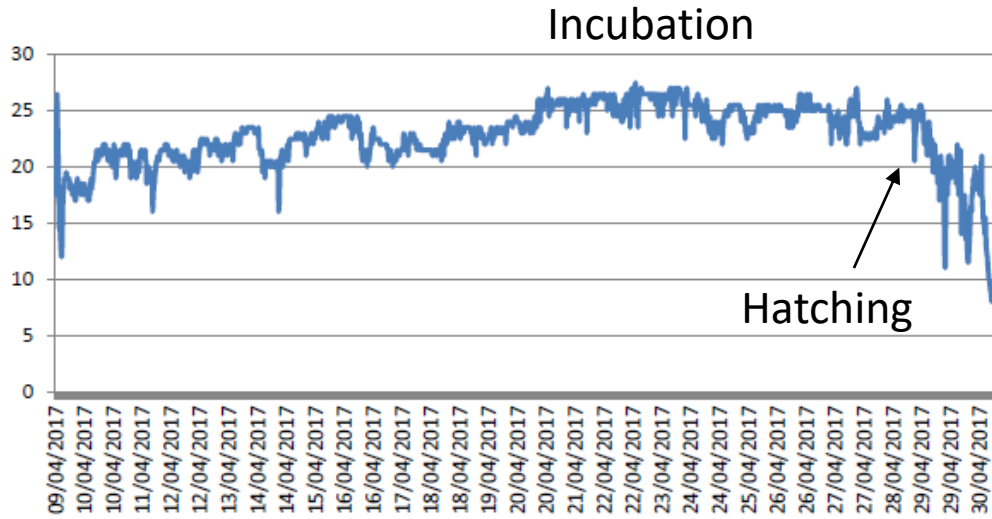
Wader productivity monitoring



Wader productivity monitoring



Wader nests monitored with temperature loggers



Some nests also monitored
with wildlife cameras



M20

51°F 10°C

05-05-2018 07:26:55



M22

41°F 5°C

05-03-2018 18:55:04



M 110

39°F 3°C

05-23-2019 23:37:37



M28

53°F 11°C

06-09-2019 12:04:06

Wader productivity monitoring



Results from 2018 & 2019 seasons

Outcome	Nests
Hatched	115
Failed	54
Unknown	13
Total	183



Species	Outcome	
	Total	Hatching success
Curlew	17	75 %
Lapwing	102	54 %
Oystercatcher	59	65 %

Wader productivity monitoring



Results from 2018 & 2019 seasons

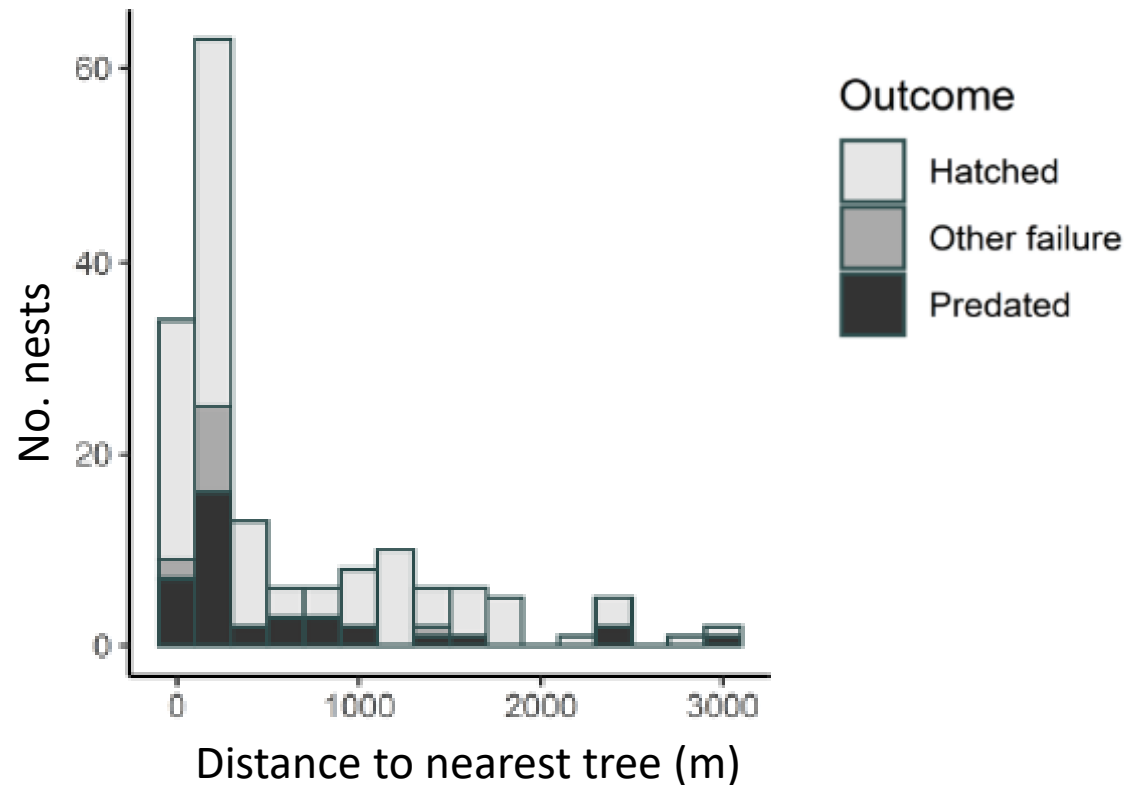
Cause of Failure	Total no. nests	
Abandoned / weather	8	} 13 (55%)
Agricultural operations	4	
Sheep (trampled)	1	
Sheep (predated)	1	} 11 (45%)
Badger	1	
Stoat	3	
Pine marten	3	
Jackdaw	1	
Common gull	2	

Full report: Jarrett, D., Calladine, J., Milner, J., Wernham C. & Wilson, M. 2019. [Investigating wader breeding productivity in the East Cairngorms Moorland Partnership Area using collaborative methods](#). Research Report no. 723. ISBN: 978-1-912642-11-3 36pp [Download Report](#) (PDF)

Wader monitoring



Results from 2018 & 2019 seasons



No effect of distance to trees or % woodland cover on hatching success

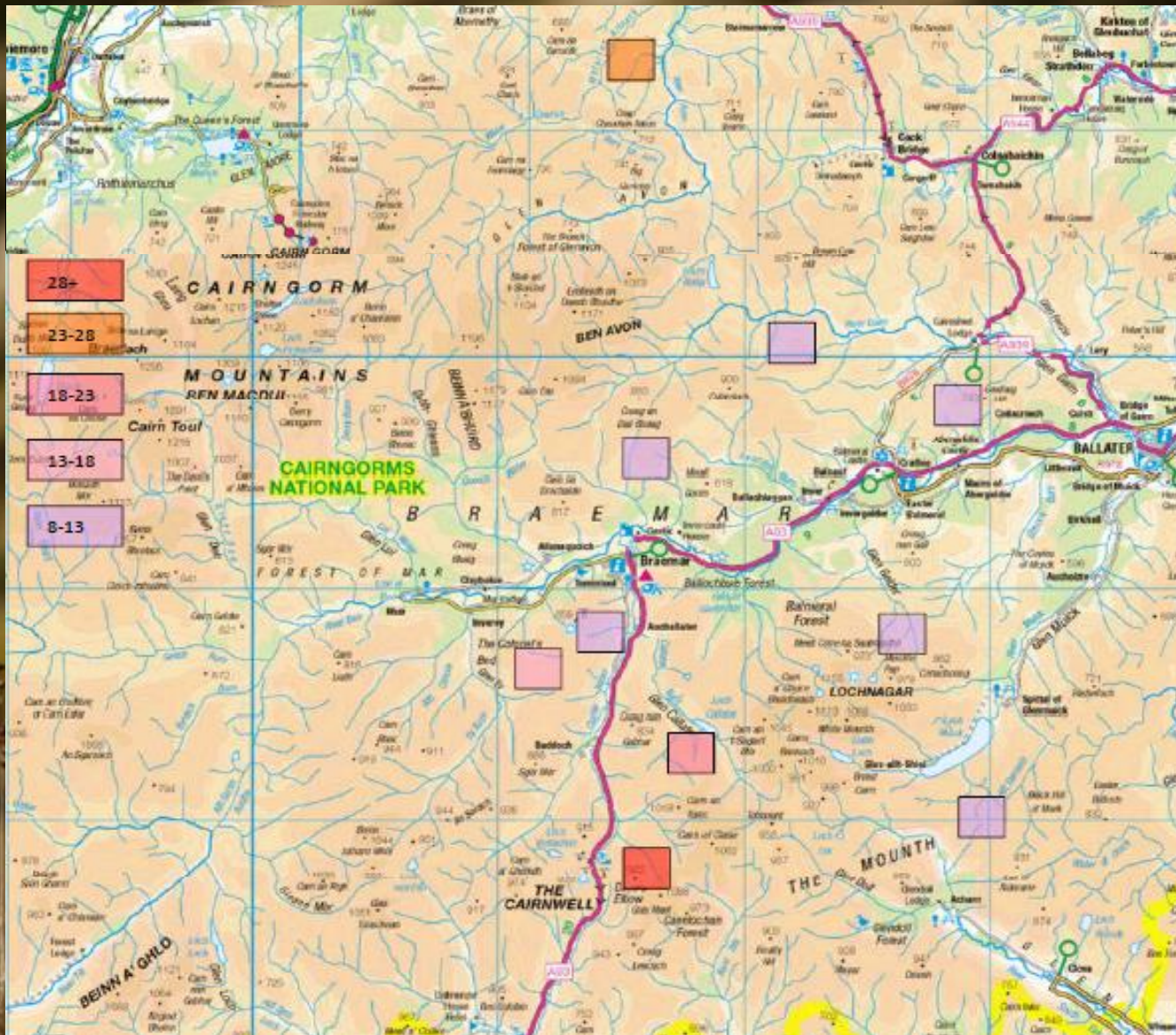
Mountain Hare

Hare monitoring - GWCT training



2018 Encounter rates
Average = 16 hares / km

Mountain Hare



Raptors

2016-18 ECMP	No. occupied sites
Merlin	22
Golden eagle	12
Peregrine	14
Hen harrier	3
TOTAL	51



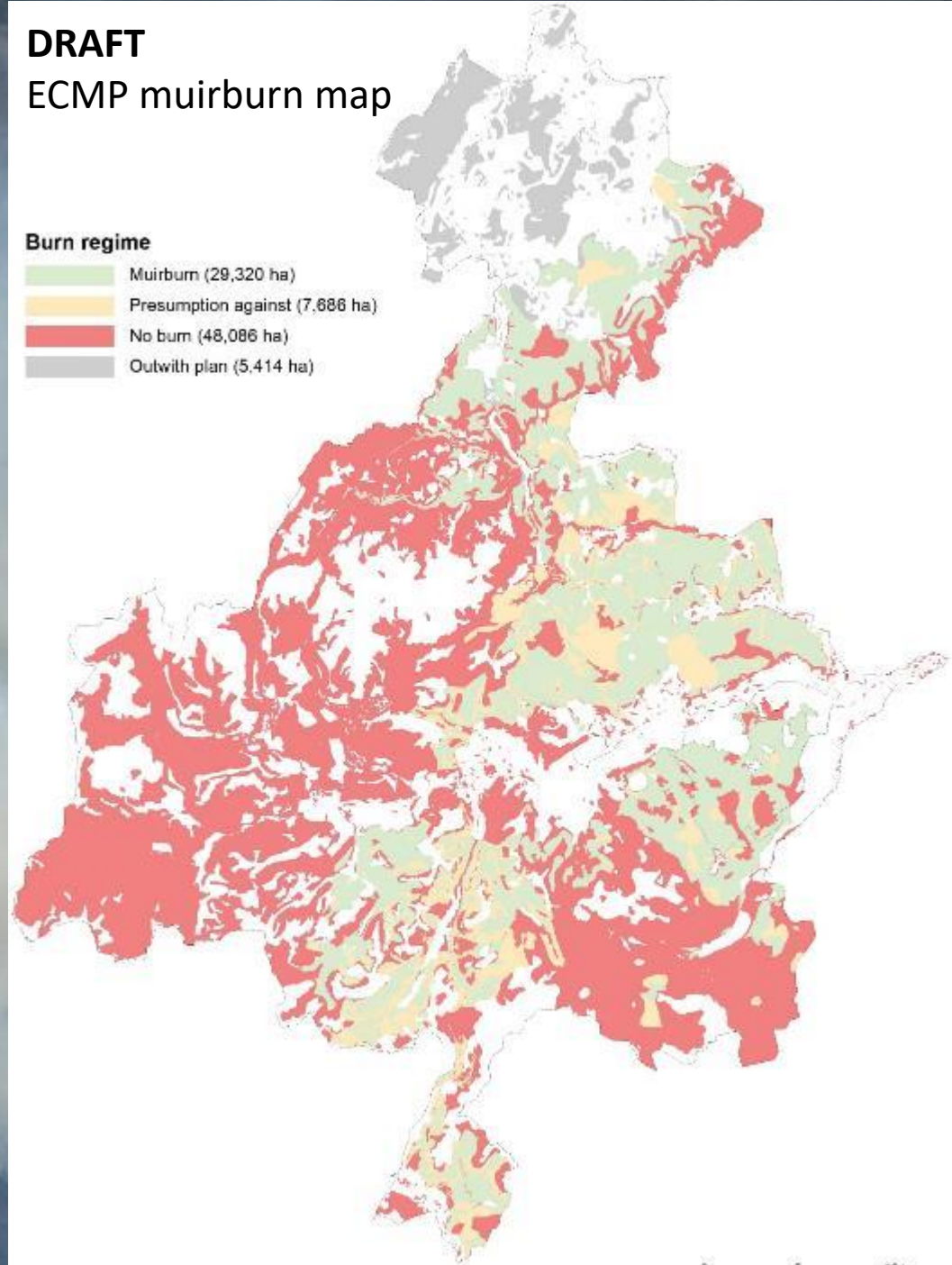
Muirburn



DRAFT
ECMP muirburn map

Burn regime

- Muirburn (29,320 ha)
- Presumption against (7,686 ha)
- No burn (48,086 ha)
- Outwith plan (5,414 ha)



Muirburn



A landscape photograph showing rolling hills with sparse vegetation and scattered trees under a cloudy sky. The hills are covered in brownish, scrubby vegetation, with patches of green trees scattered across the slopes. The sky is filled with white and grey clouds. The overall scene depicts a natural, somewhat rugged environment.

Woodland expansion

- Current woodland cover approx. 10 % of ECMP
- Expansion across ECMP over last 10 yr: 1,500 ha
- Regeneration & planting over next 10 yr: 2,500 – 3,000 ha with & without fencing

Scrub expansion

A rare ecotone at woodland / moorland edge





Peatland restoration

- 700 ha of degraded peatland in ECMP worked on by end of 2018
- Equivalent to saving 8,667 t of CO₂ per year
- Further 225 ha awarded funding for 2019 but limited by contractor capacity




Scottish Natural Heritage
Duaichas Nàdar na h-Alba

**Peatland
ACTION**