



General Register Office
for
SCOTLAND
information about Scotland's people

**Household Projections for Scotland's Strategic
Development Plan Areas and National Parks
(2008 based)**

Published on 11 August 2010

Contents

1.	Introduction	6
2.	National Parks	10
2.1	Main Points	10
2.2	Results.....	12
2.2.1	Overall number of households.....	12
2.2.2	Types of household	13
2.2.3	Age group of head of household.....	14
2.2.4	Household type by age group of head of household	15
3.	Strategic Development Plan Areas	16
3.1	Main Points	16
3.2	Results.....	18
3.2.1	Overall number of households.....	18
3.2.2	Types of household	19
3.2.3	Age group of head of household.....	20
3.2.4	Household type by age group of head of household	21
4.	National Park and SDP boundaries	22
5.	Notes on the household projections.....	24
6.	Related publications.....	26
7.	Notes on statistical publications.....	54

List of Tables

Table 1a:	Household projections for Cairngorms National Park, by type of household, 2008-2033	27
Table 1b:	Household projections for Loch Lomond and the Trossachs National Park, by type of household, 2008-2033	28
Table 2a:	Household projections for Cairngorms National Park, by age group of the head of household, 2008-2033	29
Table 2b:	Household projections for Loch Lomond and the Trossachs National Park, by age group of the head of household, 2008-2033	30
Table 3a:	Household projections for Cairngorms National Park, by household type and age group of the head of household, 2008-2033	31
Table 3b:	Household projections for Loch Lomond and the Trossachs National Park, by household type and age group of the head of household, 2008-2033	32
Table 4a:	Projected percentage of people living alone in Cairngorms National Park, by gender and age group, 2008-2033	33
Table 4b:	Projected percentage of people living alone in Loch Lomond and the Trossachs National Park, by gender and age group, 2008-2033.....	34
Table 5a:	Household projections for Aberdeen City & Shire SDP area, by type of household, 2008-2033	35
Table 5b:	Household projections for Glasgow & Clyde Valley SDP area, by type of household, 2008-2033	36
Table 5c:	Household projections for SESplan SDP area, by type of household, 2008-2033	37
Table 5d:	Household projections for TAYplan SDP area, by type of household, 2008-2033	38
Table 6a:	Household projections for Aberdeen City & Shire SDP area, by age group of the head of household, 2008-2033	39
Table 6b:	Household projections for Glasgow & Clyde Valley SDP area, by age group of the head of household, 2008-2033	40
Table 6c:	Household projections for SESplan SDP area, by age group of the head of household, 2008-2033	41
Table 6d:	Household projections for TAYplan SDP area, by age group of the head of household, 2008-2033	42
Table 7a:	Household projections for Aberdeen City & Shire SDP area, by household type and age group of the head of household, 2008-2033...	43
Table 7b:	Household projections for Glasgow & Clyde Valley SDP area, by household type and age group of the head of household, 2008-2033...	44
Table 7c:	Household projections for SESplan SDP area, by household type and age group of the head of household, 2008-2033	45

Table 7d:	Household projections for TAYplan SDP area, by household type and age group of the head of household, 2008-2033.....	46
Table 8a:	Projected percentage of people living alone in Aberdeen City & Shire SDP area, by gender and age group, 2008-2033.....	47
Table 8b:	Projected percentage of people living alone in Glasgow & Clyde Valley SDP area, by gender and age group, 2008-2033	48
Table 8c:	Projected percentage of people living alone in SESplan SDP area, by gender and age group, 2008-2033	49
Table 8d:	Projected percentage of people living alone in TAYplan SDP area, by gender and age group, 2008-2033	50
Annex A:	Details of the data zones that have been used to calculate the household projections for the National Parks	51
Annex B:	Details of the data zones that have been used to calculate the household projections for SDP areas	52

[Detailed Tables](#) for single years are also available on the General Register Office for Scotland (GROS) website.

List of Figures

Figure 1:	Projected number of households in National Parks, 2008-2033.....	12
Figure 2:	Projected number of households in National Parks by household type, 2008 and 2033.....	13
Figure 3:	Projected number of households in National Parks by age group of head of household, 2008 and 2033.....	14
Figure 4:	Projected number of households in SDP areas, 2008-2033	18
Figure 5:	Projected number of households in SDP areas by household type, 2008 and 2033	19
Figure 6:	Projected number of households in SDP areas by age group of head of household, 2008 and 2033	20

List of Maps

Map 1:	Map of Scotland showing the locations of CNP and LLTNP.....	8
Map 2:	Map of Scotland showing the locations of SDP areas	9
Map 3:	Map of CNP comparing National Park and data zone boundaries	22
Map 4:	Map of LLTNP comparing National Park and data zone boundaries.....	23

1. Introduction

This report gives the General Register Office for Scotland's forward projection of the number of households in Scotland's National Parks and Strategic Development Plan (SDP) areas. The forward projections are given up to the year 2033, based on the estimated population of these areas in mid-2008. The projections are trend-based and do not, for example, take account of future policy.

National Parks are protected areas of beautiful countryside, wildlife and cultural heritage. There are two National Parks in Scotland: Loch Lomond and the Trossachs National Park (LLTNP), and Cairngorms National Park (CNP). The locations of the National Parks are shown on [Map 1](#). Each National Park is managed by a National Park Authority.

Table A gives information on the population and the number of households in the National Parks. These populations are quite small and forward projections for such small populations are less reliable, especially for the distant future, than those for larger communities.

Table A: Total populations and households in the National Parks in 2008

	Population	Households	Percentage of Scotland total	
			Population	Households
Cairngorms	16,430	7,700	0.3%	0.3%
Loch Lomond and the Trossachs	14,590	6,250	0.3%	0.3%
Rest of Scotland	5,137,480	2,317,300	99.4%	99.4%
Scotland	5,168,500	2,331,250	100.0%	100.0%

All figures are rounded to the nearest 10.

SDP areas ([Map 2](#)) cover the regions around Aberdeen, Dundee, Edinburgh and Glasgow. Three quarters of the population of Scotland live in these areas. SDP areas were designated in November 2008 as the area for which a SDP should be prepared by the Strategic Development Planning Authority. They comprise:

Aberdeen City and Shire Strategic Development Plan Area (Aberdeen City & Shire SDP area)

Aberdeen City and Aberdeenshire council areas (except the part of Aberdeenshire that forms part of Cairngorms National Park).

Glasgow and the Clyde Valley Strategic Development Plan Area (Glasgow & Clyde Valley SDP area)

East Dunbartonshire, East Renfrewshire, Glasgow City, Inverclyde, North Lanarkshire, Renfrewshire, South Lanarkshire and West Dunbartonshire council areas (except the part of West Dunbartonshire that forms part of Loch Lomond and the Trossachs National Park).

Edinburgh and South East Scotland Strategic Development Plan Area (SESplan SDP area)

City of Edinburgh, East Lothian, Midlothian, Scottish Borders, West Lothian and Fife (Kirkcaldy, Mid-Fife and Dunfermline local planning areas only) council areas.

Dundee, Perth, Angus and North Fife Strategic Development Plan Area (TAYplan SDP area)

Angus (except the part of Angus that forms part of Cairngorms National Park), Dundee City, Perth & Kinross (except the part of Perth & Kinross that forms part of Loch Lomond and the Trossachs National Park) and Fife (St Andrews and North Fife local planning areas only) council areas.

Table B gives information on the population and the number of households in SDP areas.

Table B: Total populations and households in SDP areas in 2008

	Population	Households	Percentage of Scotland total	
			Population	Households
Aberdeen City & Shire	448,690	202,910	9%	9%
Glasgow & Clyde Valley	1,752,950	794,440	34%	34%
SESplan	1,213,910	543,620	23%	23%
TAYplan	475,190	215,880	9%	9%
Rest of Scotland	1,277,760	574,400	25%	25%
Scotland	5,168,500	2,331,250	100%	100%

All figures are rounded to the nearest 10.

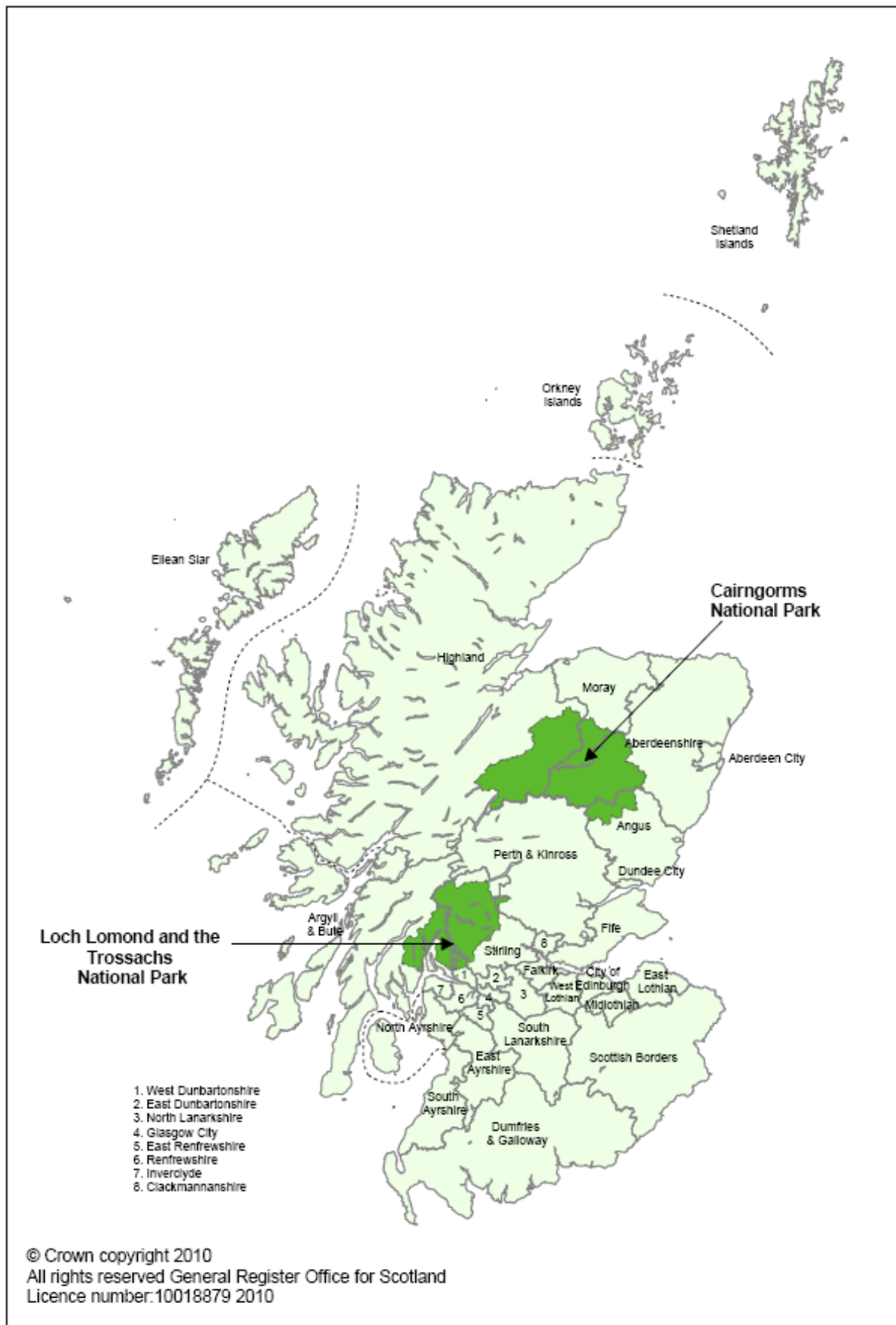
Further details of National Park and SDP boundaries are given in [Section 4](#), and in [Maps 3](#) and [4](#). More information about SDP areas is available from the Scottish Government's Planning Circular 3/08:

<http://www.scotland.gov.uk/Publications/2008/11/25145654/15>

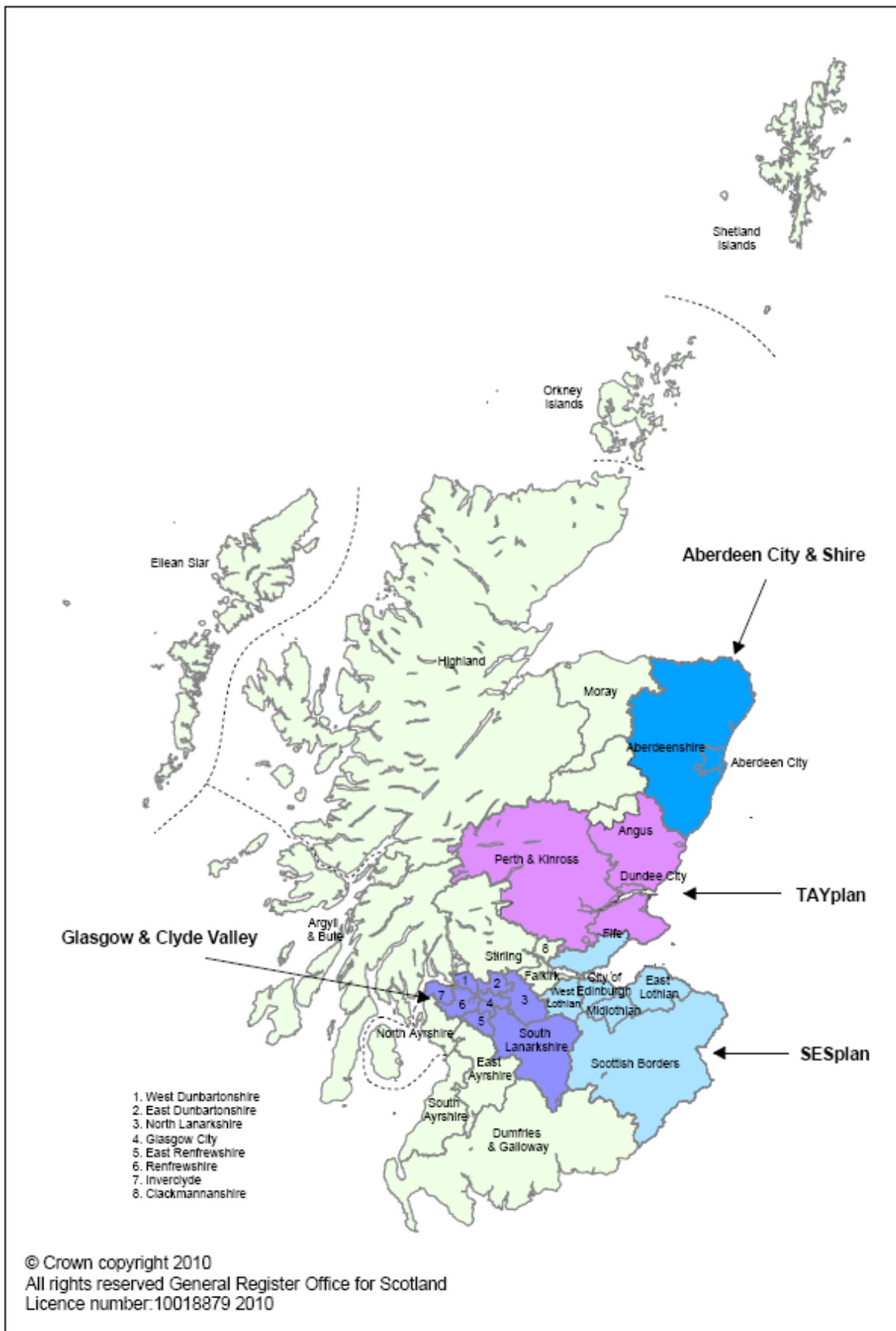
Any boundary change as the result of the Scottish Natural Heritage public consultation (running from 6th March to 31st May 2010) to extend Cairngorms National Park into Perth & Kinross council area has not been included in this publication, as the consultation period had not finished at the time of publication of the 2008-based population projections for National Parks and SDP areas.

These household projections are mainly used to help assess housing needs and future demand.

Map 1: Map of Scotland showing the locations of CNP and LLTNP



Map 2: Map of Scotland showing the locations of SDP areas



2. National Parks

2.1 Main Points

The key points, relating to Scotland's National Parks are:

- Between 2008 and 2033, the number of households in the National Parks is projected to increase. The number of households in CNP is projected to increase by 31 per cent, while the number of households in LLTNP is projected to increase by two per cent.
- Over the same period of time, the population of CNP is projected to increase by 20 per cent, while the population of LLTNP is projected to decrease by 10 per cent. In CNP the average household size is projected to decrease from 2.07 in 2008 to 1.88 in 2033, and similarly in LLTNP the average household size is projected to decrease from 2.29 to 2.00.

Household Type

- There is a projected increase in the number of households containing just one adult in both National Parks. In CNP, the increase is from 2,700 (35 per cent of all households) in 2008 to 4,360 (43 per cent) by 2033. In LLTNP, the increase is from 1,800 (29 per cent) to 2,340 (37 per cent) over the same time period.
- Older women are more likely to live alone than older men. However, the number of older men living alone is projected to increase more rapidly in both National Parks.
- Overall there are projected increases in the number of households containing two or more adults without children in both National Parks. The biggest percentage increases are for households in the 60+ age group, whereas there are projected decreases in the 35-59 age group for CNP and for both under 60 age groups for LLTNP.
- The number of households with two or more adults with children is projected to decrease in both National Parks. In contrast, the number of households with one adult with children increases, though numbers in this category are small.

Age Group

- The number of households headed¹ by people aged 60 or over is projected to increase in both the National Parks. In CNP, a 56 per cent increase is projected in the number of households headed by people aged 60 and over, whereas the percentage increase in the number of households headed by those who are under 60 is 14 per cent. In LLTNP, the number of households headed by people aged 60 or over is projected to increase by 35 per cent between 2008 and 2033. For the under 60s there is a projected 22 per cent decrease.

¹ The 'head' of household is normally the first person entered on the census form.

The following table shows a summary of the percentage changes in population and the number of households, for National Parks and the whole of Scotland, over the projection period 2008-2033,

Table C: Percentage change in population and number of households, for National Parks and the whole of Scotland, 2008 to 2033

	CNP	LLTNP	Scotland
Population	20%	-10%	7%
Children (0-15)	0%	-25%	-2%
Working Age ¹	16%	-20%	2%
Pensionable Age ²	43%	24%	31%
Households	31%	2%	21%
Headed by under 60 year old	14%	-22%	7%
Headed by over 60 year old	56%	35%	47%
Household types			
1 adult	61%	30%	49%
1 adult, 1+ children	72%	34%	46%
2+ adults	24%	1%	12%
2+ adults, 1+ children	-24%	-47%	-27%
Average household size 2008	2.07	2.29	2.18
Average household size 2033	1.88	2.00	1.93

¹ Working age is 16-59 for women and 16-64 for men until 2010. Between 2010 and 2020 working age becomes 16-64 for women. Between 2024 and 2026, working age for both men and women becomes 16-65 and changes again, in two further steps, to 16-67 by 2046.

² Pensionable age is 65 for men and 60 for women until 2010. Between 2010 and 2020, the pensionable age for women increases to 65. Between 2024 and 2026, the pensionable age for both men and women increases to 66 and changes again, in two further steps, to 68 by 2046.

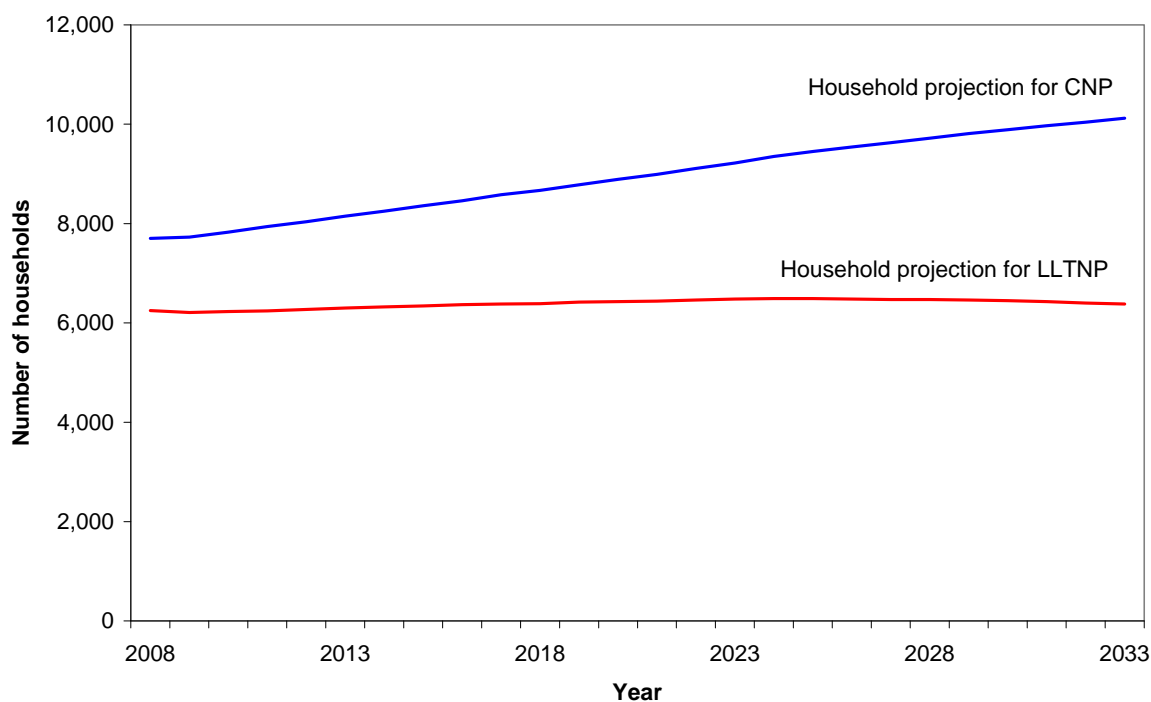
2.2 Results

2.2.1 Overall number of households (Tables 1a and 1b)

The number of households in Scotland is projected to increase from 2.3 million to 2.8 million between 2008 and 2033, an increase of 21 per cent. The number of households in CNP is projected to increase from 7,700 to 10,120, an increase of 31 per cent whereas in LLTNP the number of households is projected to increase from 6,250 to 6,380, an increase of only two per cent. Over the same period of time the population of CNP is projected to increase by around 20 per cent whereas the population of LLTNP is projected to decrease by 10 per cent. Figure 1 shows the household projections for both National Parks from 2008 to 2033.

The average household size is projected to decline in both National Parks; in CNP from 2.07 in 2008 to 1.88 in 2033 and for LLTNP from 2.29 to 2.00.

Figure 1: Projected number of households in National Parks, 2008-2033



2.2.2 Types of household (Tables 1a and 1b)

Figure 2 shows the projected number of households by household type, in 2008 and 2033 for each National Park.

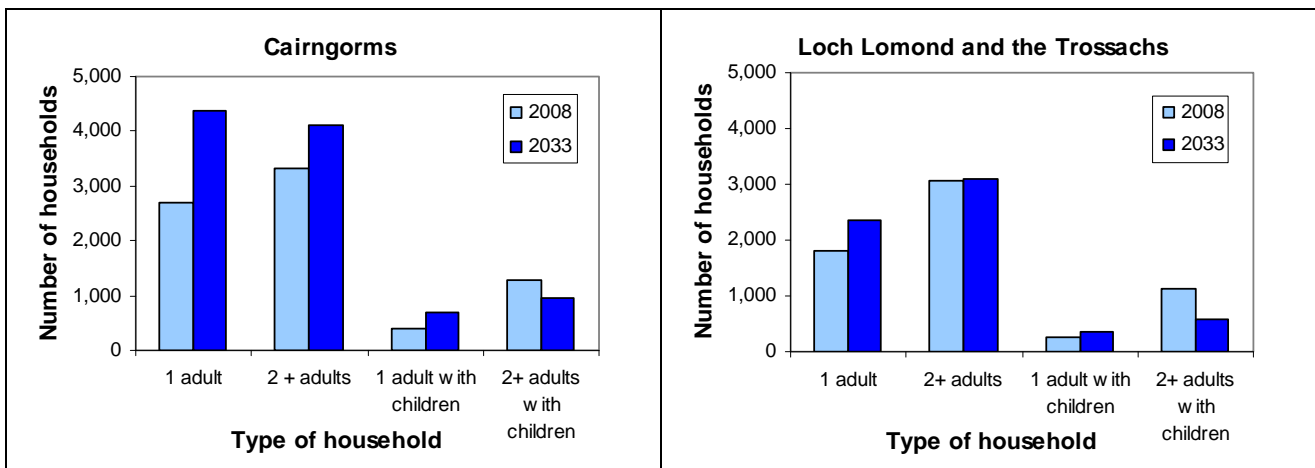
There are projected increases in the number of single adult households in both National Parks. In CNP the number of adults living alone is projected to increase from 2,700 (35 per cent of all households) in 2008 to 4,360 (43 per cent) by 2033. In LLTNP the projected increase is from 1,800 (29 per cent) to 2,340 (37 per cent).

Households containing two or more adults without children are also projected to increase in both National Parks. In CNP the increase is from 3,320 to 4,110 households and in LLTNP the increase is smaller, from 3,060 to 3,090 households.

The number of one adult with children households is projected to rise in both National Parks. In CNP the increase is from 400 to 690 and in LLTNP the increase is from 260 to 350.

In contrast, the number of larger households is projected to fall, with households containing two or more adults with children decreasing in both National Parks. In CNP the decrease is from 1,280 to 970, and in LLTNP the decrease is from 1,120 to 590.

Figure 2: Projected number of households in National Parks by household type, 2008 and 2033



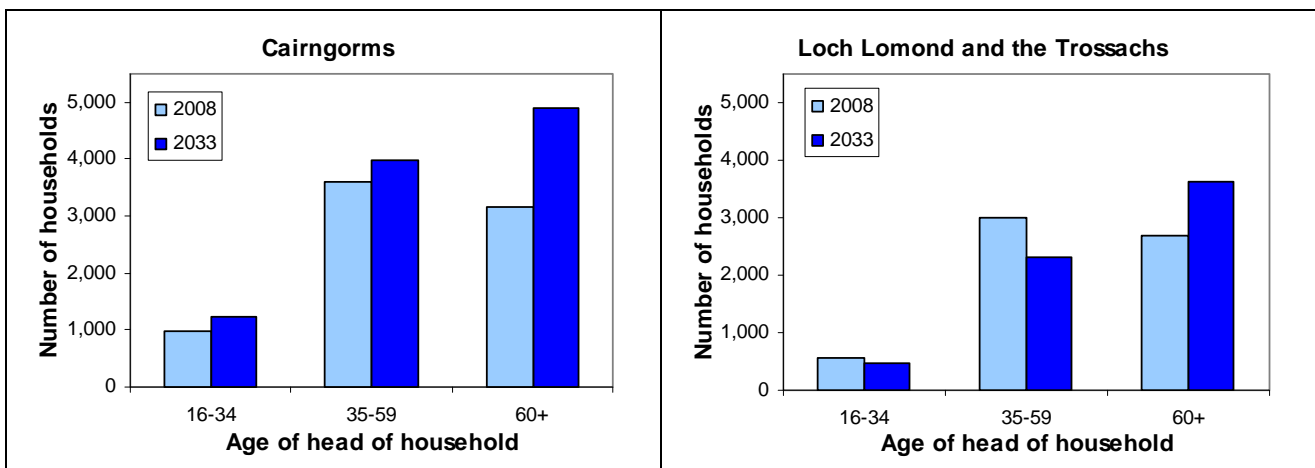
2.2.3 Age group of head of household (Tables 2a and 2b)

Figure 3 shows the projected number of households in 2008 and 2033, by the age group of the head of household (the 'head' of household is normally the first person entered on the Census form).

The population projections show that the National Park population is ageing with projected increases in the number of people in the older age groups. This trend is reflected in the household projections, with the largest increases shown in households headed by people aged 60 and over. In CNP there is a projected increase of 56 per cent from 3,150 to 4,910 households and in LLTNP there is a projected 35 per cent increase from 2,690 to 3,610 households.

Households headed by people aged 60 and under are projected to increase by over 14 per cent in CNP from 4,550 to 5,210. However, for LLTNP there is a projected 22 per cent decrease in younger households, from 3,560 to 2,760.

Figure 3: Projected number of households in National Parks by age group of head of household, 2008 and 2033



2.2.4 Household type by age group of head of household (Tables 3a, 3b, 4a and 4b)

One adult households

In 2008, 20 per cent of the population in CNP aged 16 or over lived alone, and this is projected to increase to 26 per cent by 2033. In LLTNP the corresponding projected increase is from 15 per cent to 20 per cent. Tables 4a and 4b show that people are more likely to live alone over the age of 60. In both National Parks, men are more likely to live alone until the age of 60. However from the age of 60 onwards, women are more likely to live alone. This is influenced by women's greater life expectancy and the tendency of women to marry men who are older than them.

Households containing one adult with children

In 2008 in CNP, five per cent of all households consisted of one adult living with one or more children. This percentage is projected to increase to seven per cent in 2033. In LLTNP the corresponding percentage for 2008 was four per cent, which is projected to increase to six per cent in 2033.

Households containing two or more adults without children

For both National Parks, in the older age groups, there are large projected increases in the number of households containing two or more adults without children. For CNP for this type of household, headed by someone aged 60 or over, there is a projected increase of 45 per cent from 1,660 to 2,410 households. Corresponding figures for LLTNP project a 26 per cent increase from 1,590 to 2,010 households. In contrast, there is a small projected decrease of two per cent, in this type of household for the 35-59 age group for CNP. In LLTNP there are projected decreases for both younger age groups. The projected decrease for age group 16-34 is nine per cent and for age group 35-59 is 29 per cent.

Households containing two or more adults with children

In both National Parks, there is a projected decrease in the number of households with two or more adults with children. In 2008, 17 per cent of households contained two or more adults with children in CNP, and this figure is projected to fall to 10 per cent by 2033. Similarly in LLTNP in 2008, 18 per cent of households contained two or more adults with children, and this figure is projected to fall to nine per cent in 2033.

3. Strategic Development Plan Areas

3.1 Main Points

The key points, relating to the Strategic Development Plan (SDP) areas, are:

- Between 2008 and 2033, the number of households in all four SDP areas is projected to increase. SESplan is the SDP area projected to have the largest percentage household increase (31 per cent), followed by Aberdeen City & Shire SDP area (27 per cent), TAYplan SDP area (20 per cent), and Glasgow & Clyde Valley SDP area (14 per cent)
- The average household size is projected to decrease over the same period of time in all SDP areas. The decreases are from 2.16 to 1.93 persons per household in Aberdeen City & Shire SDP area, from 2.17 to 1.89 in Glasgow & Clyde Valley SDP area, from 2.19 to 1.95 in SESplan SDP area, and from 2.13 to 1.91 in TAYplan SDP area.
- The number of households is projected to increase more rapidly than projected changes in population. As an example, for Glasgow & Clyde Valley SDP area the projected increase in population is less than one per cent, whereas the number of households is projected to increase by 14 per cent. This is due to projected changes in household structure with people more likely to live in smaller family groups in the future.

Household Type

- The number of households containing just one adult is projected to increase greatly between 2008 and 2033 in all SDP areas, ranging from 44 per cent increases in Glasgow & Clyde Valley and TAYplan SDP areas to a 53 per cent increase in Aberdeen City & Shire SDP area and a 58 per cent increase in SESplan SDP area.
- Other small households are also projected to increase in number. The projected number of households containing two adults without children ranges from an increase of 14 per cent in Glasgow & Clyde Valley SDP area to 35 per cent in Aberdeen City & Shire SDP area. The number of households containing one adult with children is also projected to increase, ranging from 36 per cent in Glasgow & Clyde Valley SDP area to 64 per cent in SESplan SDP area.
- In contrast, the number of larger households (containing two or more adults with children and containing three or more adults) is projected to show a decrease in numbers in all SDP areas.

Age Group

- Households headed¹ by people aged 60 or over are projected to show large increases for all SDP areas between 2008 and 2033 (from 39 per cent in Glasgow & Clyde Valley SDP area to 65 per cent in Aberdeen City & Shire SDP area).

¹ The 'head' of household is normally the first person entered on the census form.

- Households headed by people aged less than 60 are expected to change by a smaller amount, and vary more across the country. A small increase of three per cent is projected for Glasgow & Clyde Valley SDP area, with the largest increase of 20 per cent projected for SESplan SDP area.
- Households headed by someone aged 85 or over are projected to increase markedly in all SDP areas between 2008 and 2033, ranging from 139 per cent in Glasgow & Clyde Valley SDP area to 183 per cent in Aberdeen City & Shire SDP area.

The following table shows a summary of the percentage changes in population and the number of households, for SDP areas and the whole of Scotland, over the projection period 2008-2033.

Table D: Percentage change in population and number of households, for SDP areas and the whole of Scotland, 2008 to 2033

	Aberdeen City & Shire	Glasgow & Clyde Valley	SESPlan	TAYPlan	Scotland
Population	14%	0%	17%	8%	7%
Children (0-15)	4%	-9%	9%	2%	-2%
Working Age ¹	7%	-4%	13%	2%	2%
Pensionable Age ²	48%	23%	38%	28%	31%
Households	27%	14%	31%	20%	21%
Headed by under 60 year old	10%	3%	20%	8%	7%
Headed by over 60 year old	65%	39%	56%	40%	47%
Headed by over 85 year old	183%	139%	166%	164%	168%
Household types					
1 adult	53%	44%	58%	44%	49%
1 adult, 1+ children	44%	36%	64%	44%	46%
2 adults	35%	14%	31%	20%	23%
2+ adults, 1+ children	-20%	-35%	-15%	-23%	-27%
3+ adults	-30%	-32%	-8%	-18%	-27%
Average household size 2008	2.16	2.17	2.19	2.13	2.18
Average household size 2033	1.93	1.89	1.95	1.91	1.93

¹ Working age is 16-59 for women and 16-64 for men until 2010. Between 2010 and 2020 working age becomes 16-64 for women. Between 2024 and 2026, working age for both men and women becomes 16-65 and changes again, in two further steps, to 16-67 by 2046.

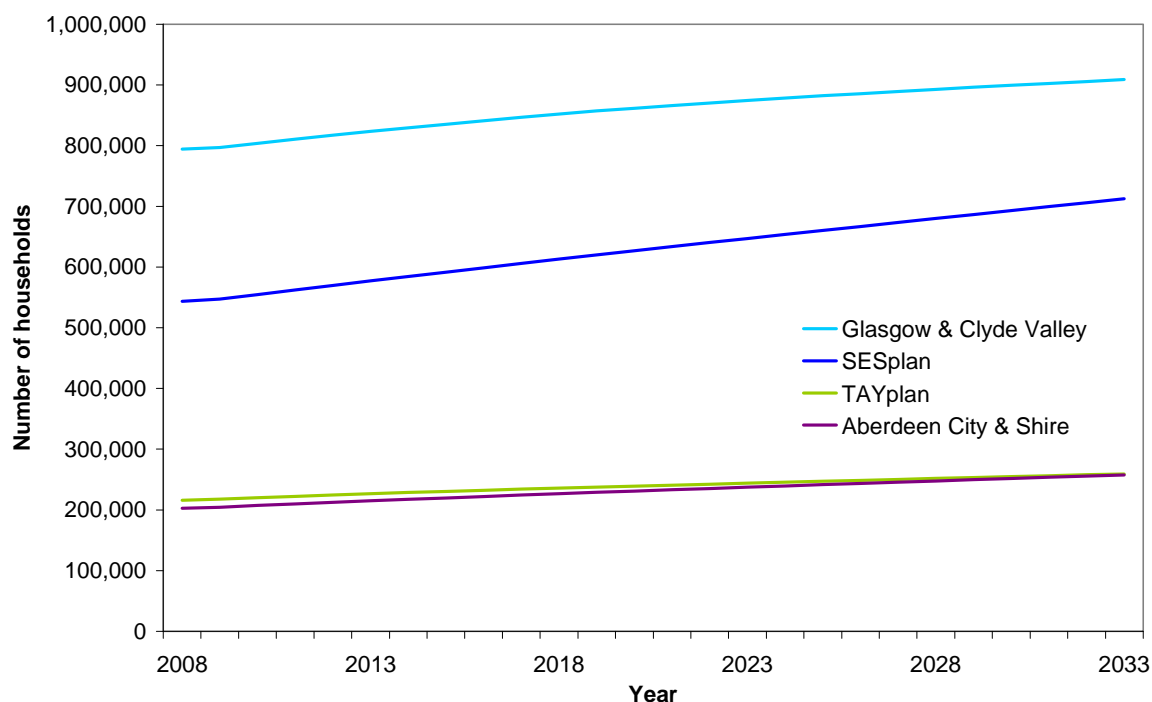
² Pensionable age is 65 for men and 60 for women until 2010. Between 2010 and 2020, the pensionable age for women increases to 65. Between 2024 and 2026, the pensionable age for both men and women increases to 66 and changes again, in two further steps, to 68 by 2046.

3.2 Results

3.2.1 Overall number of households

The projected numbers of households in SDP areas from 2008 to 2033 are shown in [Tables 5a to 5d](#) and illustrated in Figure 4.

Figure 4: Projected number of households in SDP areas, 2008-2033



The number of households in Scotland is projected to increase from 2.3 million to 2.8 million between 2008 and 2033, an increase of 21 per cent. All SDP areas show projected increases during this period:

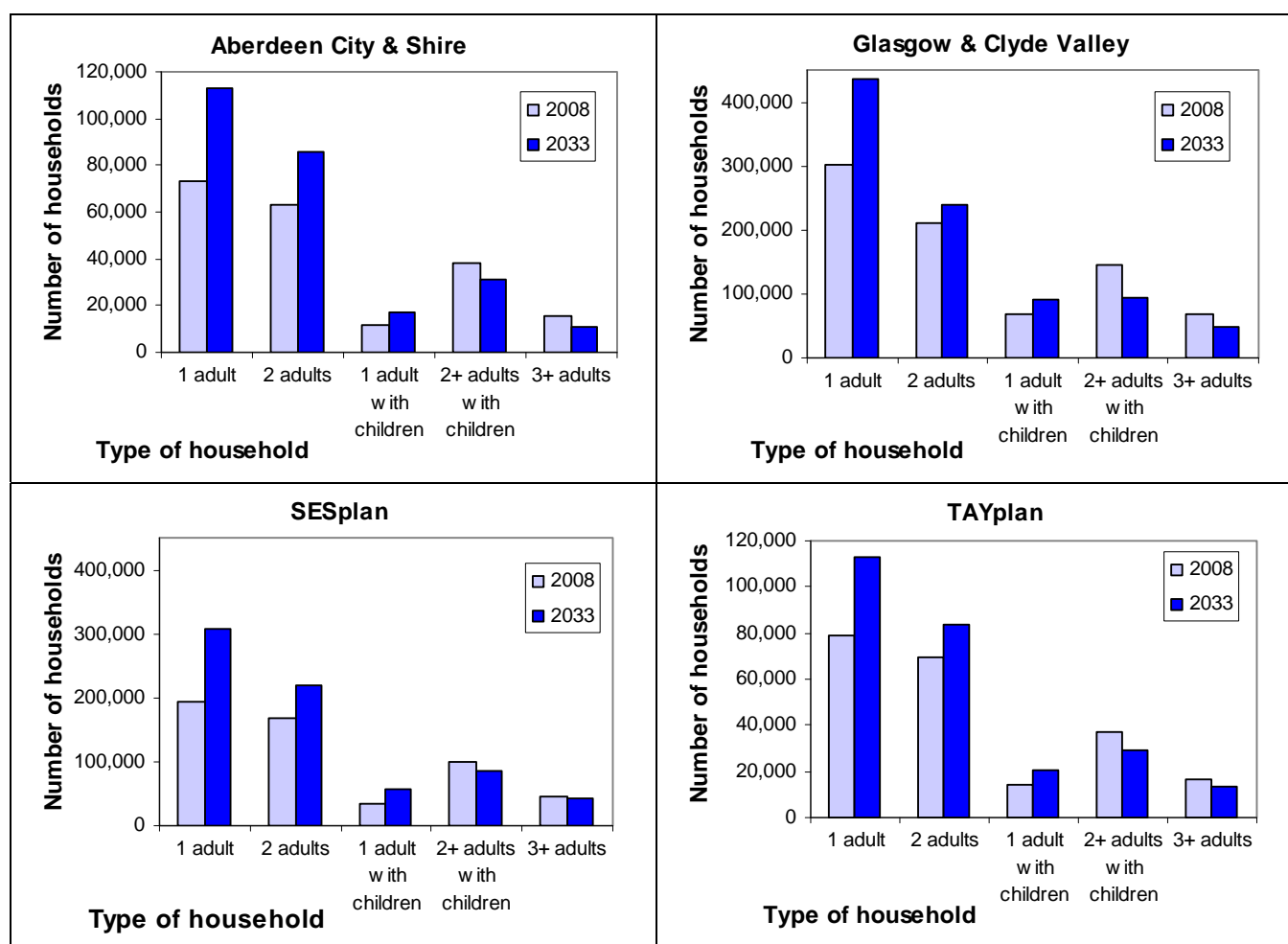
- In Aberdeen City & Shire SDP area, by 27 per cent, from 203,000 to 257,000 households.
- In Glasgow & Clyde Valley SDP area by 14 per cent, from 794,000 to 909,000 households.
- In SESplan SDP area, by 31 per cent, from 544,000 to 712,000 households.
- In TAYplan SDP area, by 20 per cent, from 216,000 to 259,000 households.

3.2.2 Types of household (Tables 5a to 5d)

Detailed information on types of household can be found in [Tables 5a to 5d](#) and is illustrated in [Figure 5](#). In all SDP areas, there are large projected increases in the numbers of adults living alone. The number of households containing just two adults without children and the number of households containing one adult with children are projected to increase as well.

In contrast, the number of larger households is projected to fall. The number of households containing two or more adults with children and the number of households containing three or more adults are both projected to decrease.

Figure 5: Projected number of households in SDP areas by household type, 2008 and 2033



Please note that scales on the y-axis differ between graphs.

3.2.3 Age group of head of household (Tables 6a to 6d)

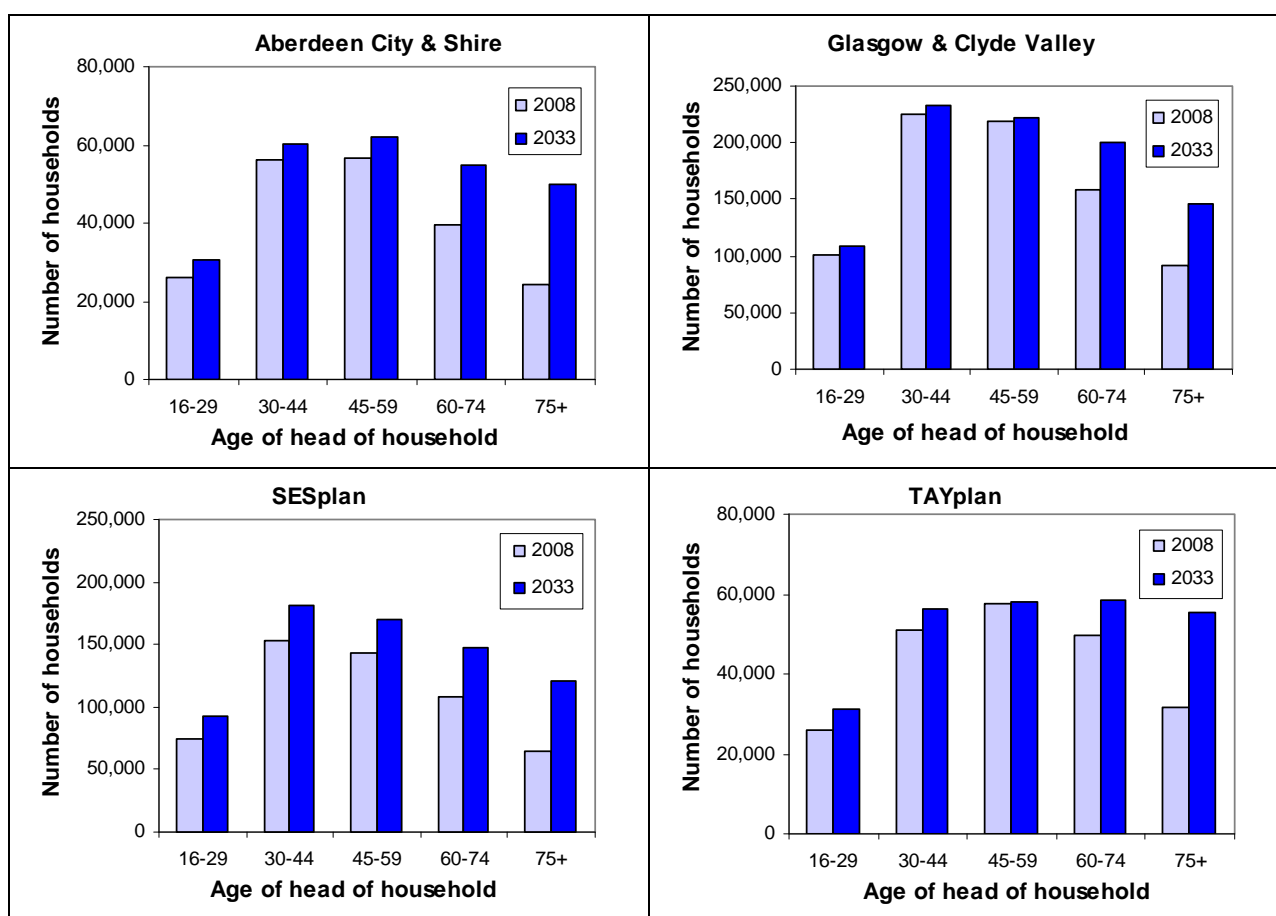
Figure 6 shows the projected number of households in 2008 and 2033, by age group of head of household. Detailed information for the age group of the head of household can also be seen in Tables 6a to 6d.

The ageing population, with a projected increase in the number of people in the older age groups, and fewer people in the younger age groups, is reflected in the household projections, with the largest increases in households headed by people aged 60 and over. Between 2008 and 2033, the projected percentage increases for households headed by people aged 60 and over range from 39 per cent in Glasgow & Clyde Valley SDP area, to 65 per cent in Aberdeen City & Shire SDP area.

Projected changes in households headed by people aged less than 60 are smaller and vary more across the country. A small increase of three per cent is projected for Glasgow & Clyde Valley SDP area, with the largest increase of 20 per cent projected for SESplan SDP area.

Between 2008 and 2033, there are large projected increases in the number of households headed by someone aged 85 or over in all the SDP areas, ranging from 139 per cent in Glasgow & Clyde Valley SDP area to 183 per cent in Aberdeen City & Shire SDP area.

Figure 6: Projected number of households in SDP areas by age group of head of household, 2008 and 2033



Please note that scales on the y-axis differ between graphs.

3.2.4 Household type by age group of head of household (Tables 7a to 7d and Tables 8a to 8d)

One adult households

In Scotland in 2008, 20 per cent of the population aged 16 or over lived alone, and this is projected to rise to 29 per cent by 2033. This trend is reflected in all SDP areas.

The figures in Tables 8a to 8d show that people in the older age groups are more likely to live alone. In 2008, in most age groups up to their mid to late 50s, men were more likely to live alone than women. From the age of 55-60 onwards, however, women are more likely to live alone, and the percentages increase with age. Projections for 2033 show a similar pattern, but with men more likely to live alone in most age groups up to their mid to late 60s. There are also more people living alone in all age groups.

The percentage of people aged 85 or over who are projected to be living alone in 2033 ranges from 59 per cent in SESplan SDP area to 66 per cent in Aberdeen City & Shire SDP area. In all SDP areas, women in this age group are much more likely to live alone than men.

The gap between the average life expectancy of men and women in Scotland is decreasing. This means that the number of older men is projected to increase more rapidly than the number of older women. This contributes to the projected increase in the number of men living alone and can be seen in Tables 7a to 7d.

Households containing one adult with children

There are projected increases in the number of households of this type in all SDP areas and for nearly all age groups (particularly people aged 45 and over).

Households containing two or more adults without children

The figures in Tables 7a to 7d show that, in all SDP areas, there are large projected increases in the number of households containing two or more adults without children in the older age groups. This is likely to be influenced by the increase in average life expectancy and the narrowing of the gap between the life expectancy of men and women.

Households containing two or more adults with children

There are projected reductions in the number of households containing two or more adults with children for most age groups, with the biggest reductions occurring in the younger age groups. This may reflect an increase in the average age at which women have their first child. Exceptions to this are in the 45-54 age groups in Aberdeen City & Shire, SESplan and TAYplan SDP areas where there are projected increases.

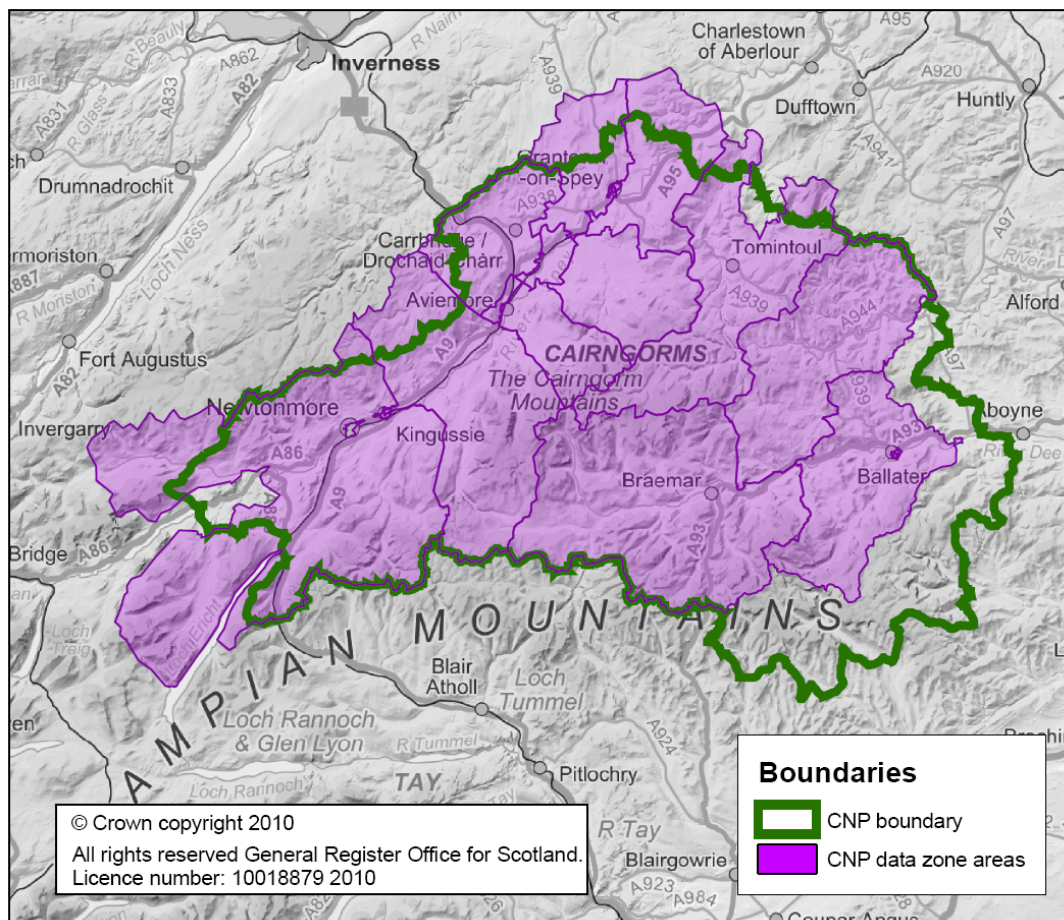
4. National Park and SDP boundaries

The populations of the National Park and SDP areas were built up from the General Register Office for Scotland's mid-2008 local authority and data zone populations. Data zones are the standard small area geography used by the Scottish Government. In general they have populations of between 500 and 1,000 residents. Data zone boundaries do not exactly match National Park and SDP boundaries and so, for the purpose of the projections, data zones are included or excluded based on the data zone centroid, as determined by the Scottish Government. Data zones that have been used to calculate household projections for National Park and SDP areas are listed in [Annex A](#) and [Annex B](#).

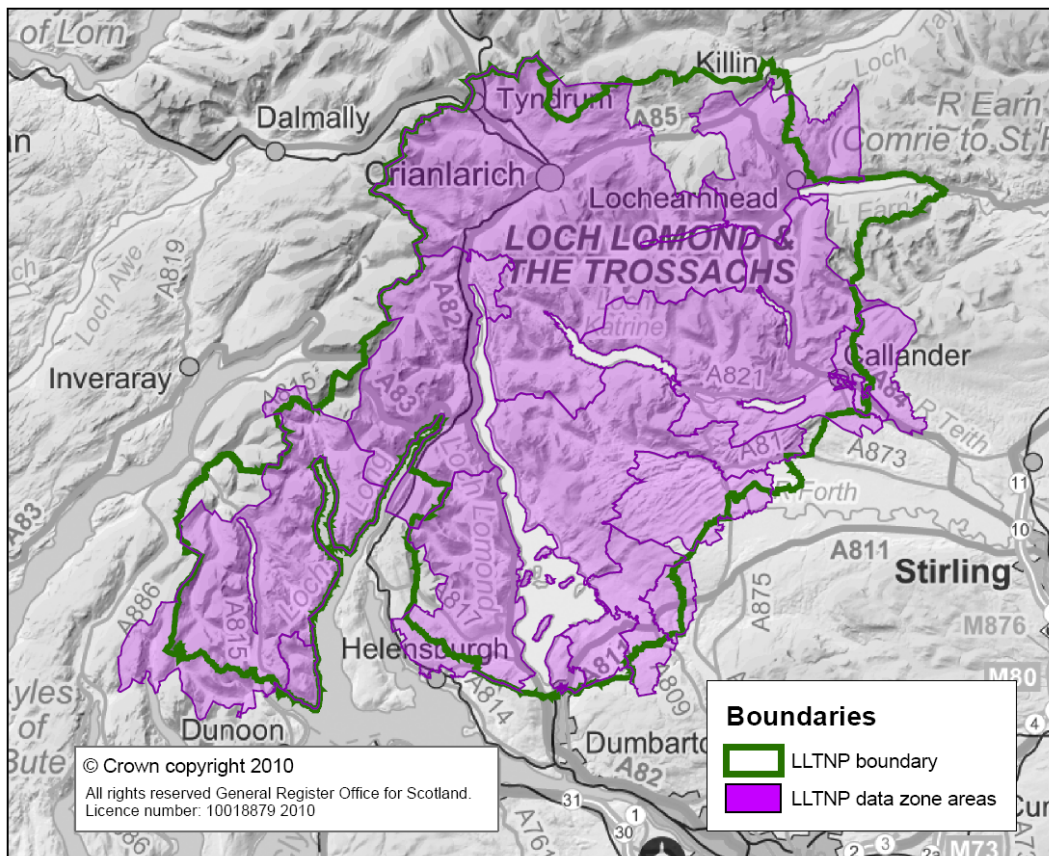
The use of data zone centroids is a standard approach for assigning the population of a small geographical area to a larger area if the small area does not wholly fit within the boundaries of the larger area or lies across the border of two larger areas. The centroid is not a representation of the geographical centre of the data zone, but rather a representation of the population weighted centre or, put more simply, the population "centre of gravity" of the area. In this publication, a data zone is allocated to the National Park if the population weighted centroid lies within the park boundary.

The boundaries of the National Park areas, and the relevant data zones, are shown in [Map 3](#) and [Map 4](#).

Map 3: Map of CNP comparing National Park and data zone boundaries



Map 4: Map of LLTNP comparing National Park and data zone boundaries



Though the actual park boundaries do not precisely match those used in this publication, the difference between the two is very small in terms of population. (Data zone populations have been estimated to be 1.89% less for the Cairngorms National Park and 3.77% less for Loch Lomond and the Trossachs when compared to postcode populations²). The Cairngorms National Park boundary does not coincide with the data zone boundary around Boultenstone and Dinnet to the east of the park, Glen Clova to the south west, Glenlivet to the north east, and the area east of Loch Laggan. For Loch Lomond and the Trossachs, mis-match occurs near Balloch, Killin, the eastern shores of Loch Earn and the area around Glenbranter.

More detailed maps that show the location of population weighted centroids are available at <http://www.scotland.gov.uk/Topics/Statistics/sns/BoundMap#a12>

A paper describing the methodology for calculating data zone centroids can be found at <http://www.scotland.gov.uk/Topics/Statistics/sns/SNSRef>

² A report on the comparison of populations of non-standard geographies constructed from different small area geographies was produced in 2008. The report includes a comparison of different population estimates for National Parks based on postcode and data zone geographies using 2001 census populations.

<http://www.scotland.gov.uk/Topics/Statistics/sns/SNSRef/PopNonStandardGeogs>

5. Notes on the household projections

Uses

Household projections are mainly used for informing decisions about future housing need and service provision, and are used in the production of Development Plans.

Interpreting the projections

These household projections have limitations. A projection is a calculation showing what happens if particular assumptions are made. The household projections are based on population projections and, as a result, assumptions used for the population projections (particularly future migration, fertility and mortality) will have an effect on the household projections. Projections for small groups are likely to be less reliable than those for larger groups.

Every two years the Office of National Statistics (ONS), in consultation with the Registrars General, produces a “principal” population projection and a number of ‘variant’ projections, based on alternative assumptions of future fertility, mortality and migration, for the UK and its constituent countries. These projections for National Park and SDP areas are based on the “principal” population projection.

The household projections are trend-based, rather than policy-based forecasts. They do not take into account social and economic factors that may influence the formation of households, including policies adopted by both central and local government as well as any imbalances between housing supply and demand.

Summary of the methodology

Household projections are based on the population projections produced by the General Register Office for Scotland. The number of people living in private households is estimated by taking the population projections for each year and subtracting the number of people living in communal establishments, such as student halls of residence, care homes or prisons. To estimate the number of households of each type, information on household type and age group is projected forward from the 1991 and 2001 Censuses, for each household type, age group and projection area. This information is applied to the private household population to produce the basic household projections.

A more detailed description of household projections methodology can be found at <http://www.gro-scotland.gov.uk/files2/stats/household-projections/2008-projections/j1180906.htm>

Household projections for National Parks are based on the population projections for National Parks and are built up from the General Register Office for Scotland’s mid-2008 data zone populations. The overall projections for Scotland are believed to be more accurate than those for individual areas and therefore the National Park figures and the rest of Scotland are constrained to the Scottish total.

For SDP areas, household projections were calculated by aggregating the projections for the constituent council areas (which have already been published) and then subtracting any areas which do not form part of the SDP area such as

areas which overlap with the National Parks. (For further details of the boundaries used, see [Section 4](#))

Household types and age groups used in the household projections

National Parks

Household projections are produced for each National Park area, broken down into five household types (based on the number of adults and children living in the household) and three age groups. Due to small numbers it is not appropriate to produce projections for smaller age groups. Household types and age groups are shown here:

Household types
1 person households:
1 adult: male
1 adult: female
2+ person households:
2+ adults
1 adult, 1+ children
2+ adults, 1+ children

Age group of head of household
16-34
35-59
60+

SDP areas

Household projections are produced for each SDP area, broken down into seven household types (based on the number of adults and children living in the household) and 16 age groups, as follows:

Household types
1 person households:
1 adult: male
1 adult: female
2 person households:
2 adults
1 adult, 1 child
3+ person households:
1 adult, 2+ children
2+ adults, 1+ children
3+ adults

Age group of head of household
16-19
20-24
25-29
30-34
35-39
40-44
45-49
50-54
55-59
60-64
65-69
70-74
75-79
80-84
85-89
90+

6. Related publications

General Register Office for Scotland population estimates and projections, including equivalent projections for Scotland, National Parks and local authority areas, are available from

<http://www.gro-scotland.gov.uk/statistics/population/index.html>.

General Register Office for Scotland household estimates show annual estimates of the number of households and dwellings in Scotland. They are available at <http://www.gro-scotland.gov.uk/statistics/publications-and-data/household-estimates-statistics/index.html>

General Register Office for Scotland household projections, including equivalent projections for Scotland and local authority areas, are available from <http://www.gro-scotland.gov.uk/statistics/publications-and-data/household-projections-statistics/index.html>

Scottish Government housing statistics for Scotland are available from <http://www.scotland.gov.uk/Topics/Statistics/Browse/Housing-Regeneration>.

Scottish Government planning statistics, including statistics on vacant and derelict land, are available from <http://www.scotland.gov.uk/Topics/Statistics/Browse/Planning>.

Household estimates and projections for other parts of the UK are available from the following sources:

- England: Department for Communities and Local Government: <http://www.communities.gov.uk/housing/housingresearch/housingstatistics/housingstatisticsby/householdestimates/>
- Wales: Welsh Assembly Government: <http://new.wales.gov.uk/topics/statistics/theme/housing/?lang=en>
- Northern Ireland: Northern Ireland Statistics and Research Agency: <http://www.nisra.gov.uk/demography/default.asp21.htm>

You can register with the Scottish Government's **ScotStat** website, to receive notification of any statistics published by GROS or the Scottish Government: <http://www.scotland.gov.uk/Topics/Statistics/scotstat/Intro>.

More information about the **planning system in Scotland** is available from the Scottish Government's website at <http://www.scotland.gov.uk/Topics/Built-Environment/planning>

Please note that figures in the following tables are rounded to the nearest ten. Therefore, the totals shown may not be equal to the sum of the constituent parts.

Table 1a: Household projections for Cairngorms National Park, by type of household, 2008-2033

Household size	Household type	2008	2013	2018	2023	2028	2033	Change		Average annual change ¹		
								2008-2033		2008-2033	2008-2018	2019-2033
One person households	1 adult male	1,230	1,400	1,580	1,790	1,980	2,120	890	72%	35	35	36
	1 adult female	1,470	1,610	1,740	1,920	2,080	2,240	770	52%	31	27	33
2+ person households	1 adult, 1+ children	400	450	500	570	640	690	290	72%	12	10	13
	2+ adults	3,320	3,500	3,730	3,860	3,990	4,110	790	24%	31	41	25
	2+ adults, 1+ children	1,280	1,200	1,130	1,080	1,030	970	-310	-24%	-12	-16	-10
All households		7,700	8,150	8,670	9,220	9,720	10,120	2,420	31%	97	97	96

Private household population ²	15,940	16,650	17,320	17,950	18,530	19,000	3,060	19%
Average household size ³	2.07	2.04	2.00	1.95	1.91	1.88	-0.19	-9%

Percentage of all households by household type

Household size	Household type	2008	2013	2018	2023	2028	2033
One person households	1 adult male	16%	17%	18%	19%	20%	21%
	1 adult female	19%	20%	20%	21%	21%	22%
2+ person households	1 adult, 1+ children	5%	6%	6%	6%	7%	7%
	2+ adults	43%	43%	43%	42%	41%	41%
	2+ adults, 1+ children	17%	15%	13%	12%	11%	10%
All households		100%	100%	100%	100%	100%	100%

1. Average annual change is the result of dividing the absolute change (before rounding) by the number of years referred to.

2. Private household population: The population living in private households, i.e. people not living in communal establishments.

3. Average household size is the result of dividing "private household population" by "all households"

Table 1b: Household projections for Loch Lomond and the Trossachs National Park, by type of household, 2008-2033

Household size	Household type	2008	2013	2018	2023	2028	2033	Change		Average annual change ¹		
								2008-2033		2008-2033	2008-2018	2018-2033
One person households	1 adult male	760	830	920	1,020	1,100	1,170	420	55%	17	17	17
	1 adult female	1,050	1,110	1,150	1,180	1,190	1,170	120	12%	5	10	2
2+ person households	1 adult, 1+ children	260	280	300	330	350	350	90	34%	4	4	4
	2+ adults	3,060	3,160	3,220	3,220	3,180	3,090	30	1%	1	16	-9
	2+ adults 1+ children	1,120	920	800	720	660	590	-530	-47%	-21	-32	-14
All households		6,250	6,300	6,390	6,480	6,470	6,380	130	2%	5	15	-1
Private household population²		14,280	14,070	13,840	13,590	13,250	12,750	-1,530	-11%			
Average household size³		2.29	2.23	2.16	2.10	2.05	2.00	-0.29	-13%			

Percentage of all households by household type

Household size	Household type	2008	2013	2018	2023	2028	2033
One person households	1 adult male	12%	13%	14%	16%	17%	18%
	1 adult female	17%	18%	18%	18%	18%	18%
2+ person households	1 adult, 1+ children	4%	4%	5%	5%	5%	6%
	2+ adults	49%	50%	50%	50%	49%	48%
	2+ adults 1+ children	18%	15%	13%	11%	10%	9%
All households		100%	100%	100%	100%	100%	100%

1. Average annual change is the result of dividing the absolute change (before rounding) by the number of years referred to.

2. Private household population: The population living in private households, i.e. people not living in communal establishments.

3. Average household size is the result of dividing "private household population" by "all households"

Table 2a: Household projections for Cairngorms National Park, by age group of the head of household, 2008-2033

Age of head of household	2008	2013	2018	2023	2028	2033	Change		Average annual change ¹		
							2008-2033		2008-2033	2008-2018	2018-2033
16-34	970	1,070	1,150	1,150	1,190	1,230	270	28%	11	18	6
35-59	3,590	3,580	3,720	3,850	3,930	3,970	390	11%	15	13	17
60+	3,150	3,500	3,810	4,210	4,600	4,910	1,760	56%	71	66	73
All households	7,700	8,150	8,670	9,220	9,720	10,120	2,420	31%	97	97	96

Age of head of household	2008	2013	2018	2023	2028	2033
16-34	13%	13%	13%	13%	12%	12%
35-59	47%	44%	43%	42%	40%	39%
60+	41%	43%	44%	46%	47%	49%
All households	100%	100%	100%	100%	100%	100%

1. Average annual change is the result of dividing the absolute change (before rounding) by the number of years referred to.

Table 2b: Household projections for Loch Lomond and the Trossachs National Park, by age group of the head of household, 2008-2033

Age of head of household	2008	2013	2018	2023	2028	2033	Change 2008-2033		Average annual change ¹		
									2008-2033	2008-2018	2018-2033
16-34	560	610	660	630	550	460	-100	-18%	-4	10	-13
35-59	3,000	2,730	2,590	2,470	2,340	2,300	-700	-23%	-28	-41	-19
60+	2,690	2,960	3,150	3,370	3,580	3,610	930	35%	37	46	31
All households	6,250	6,300	6,390	6,480	6,470	6,380	130	2%	5	15	-1

Age of head of household	2008	2013	2018	2023	2028	2033
16-34	9%	10%	10%	10%	9%	7%
35-59	48%	43%	41%	38%	36%	36%
60+	43%	47%	49%	52%	55%	57%
All households	100%	100%	100%	100%	100%	100%

1. Average annual change is the result of dividing the absolute change (before rounding) by the number of years referred to.

Table 3a: Household projections for Cairngorms National Park, by household type and age group of the head of household, 2008-2033

Household type	Age group	2008	2013	2018	2023	2028	2033	Change 2008-2033		Average annual change ¹		
										2008-2033	2008-2018	2018-2033
1 adult: male	16-34	200	230	260	270	280	300	100	50%	4	5	3
	35-59	550	600	670	760	840	880	330	59%	13	12	14
	60+	480	560	650	760	860	940	460	96%	18	17	19
	All ages	1,230	1,400	1,580	1,790	1,980	2,120	890	72%	35	35	36
1 adult: female	16-34	120	130	150	150	160	170	60	48%	2	3	2
	35-59	390	430	470	500	530	570	180	46%	7	8	7
	60+	960	1,040	1,120	1,260	1,390	1,490	530	55%	21	16	25
	All ages	1,470	1,610	1,740	1,920	2,080	2,240	770	52%	31	27	33
1 adult, 1+children	16-34	140	170	200	220	240	260	120	83%	5	6	4
	35-59	250	270	290	340	380	410	160	65%	7	4	8
	60+	10	10	10	10	10	20	10	118%	0	0	0
	All ages	400	450	500	570	640	690	290	72%	12	10	13
2+adults	16-34	250	270	300	290	300	310	60	23%	2	4	1
	35-59	1,410	1,390	1,450	1,430	1,410	1,380	-30	-2%	-1	4	-4
	60+	1,660	1,840	1,990	2,130	2,280	2,410	750	45%	30	33	28
	All ages	3,320	3,500	3,730	3,860	3,990	4,110	790	24%	31	41	25
2+ adults, 1+ children	16-34	260	260	250	220	210	190	-60	-25%	-3	-1	-4
	35-59	980	900	840	810	770	720	-260	-26%	-10	-15	-7
	60+	40	40	40	50	50	50	10	26%	0	0	1
	All ages	1,280	1,200	1,130	1,080	1,030	970	-310	-24%	-12	-16	-10
All households	All ages	7,700	8,150	8,670	9,220	9,720	10,120	2,420	31%	97	97	96

1. Average annual change is the result of dividing the absolute change (before rounding) by the number of years referred to.

Table 3b: Household projections for Loch Lomond and the Trossachs National Park, by household type and age group of the head of household, 2008-2033

Household type	Age group	2008	2013	2018	2023	2028	2033	Change 2008-2033		Average annual change ¹		
										2008-2033	2008-2018	2018-2033
1 adult: male	16-34	90	100	120	120	100	90	0	-4%	0	3	-2
	35-59	320	330	340	350	340	350	30	9%	1	2	1
	60+	340	400	460	560	650	730	390	115%	16	12	18
	All ages	760	830	920	1,020	1,100	1,170	420	55%	17	17	17
1 adult: female	16-34	60	70	80	70	70	60	0	-1%	0	1	-1
	35-59	270	260	260	260	260	270	0	0%	0	-1	1
	60+	720	770	810	840	850	840	120	17%	5	9	2
	All ages	1,050	1,110	1,150	1,180	1,190	1,170	120	12%	5	10	2
1 adult, 1+children	16-34	80	100	120	120	110	100	20	23%	1	4	-1
	35-59	180	170	170	200	220	240	60	36%	3	0	4
	60+	10	10	10	20	20	20	10	90%	0	0	0
	All ages	260	280	300	330	350	350	90	34%	4	4	4
2+adults	16-34	180	200	220	220	200	170	-20	-9%	-1	4	-4
	35-59	1,290	1,210	1,150	1,050	940	910	-380	-29%	-15	-14	-16
	60+	1,590	1,750	1,850	1,940	2,040	2,010	420	26%	17	25	11
	All ages	3,060	3,160	3,220	3,220	3,180	3,090	30	1%	1	16	-9
2+ adults, 1+ children	16-34	150	130	120	100	70	50	-100	-66%	-4	-2	-5
	35-59	950	770	660	610	570	530	-410	-44%	-17	-28	-9
	60+	30	20	20	10	10	10	-20	-66%	-1	-1	0
	All ages	1,120	920	800	720	660	590	-530	-47%	-21	-32	-14
All households	All ages	6,250	6,300	6,390	6,480	6,470	6,380	130	2%	5	15	-1

1. Average annual change is the result of dividing the absolute change (before rounding) by the number of years referred to.

Table 4a: Projected percentage of people living alone in Cairngorms National Park, by gender and age group, 2008-2033

Age group	2008	2013	2018	2023	2028	2033
Males						
16-34	13%	15%	15%	16%	16%	17%
35-59	19%	21%	24%	26%	28%	29%
60+	22%	22%	24%	26%	27%	27%
All ages	19%	20%	22%	23%	25%	26%
Females						
16-34	8%	9%	10%	10%	11%	12%
35-59	13%	14%	15%	16%	17%	18%
60+	37%	36%	35%	36%	35%	35%
All ages	21%	21%	22%	23%	24%	25%
Total						
16-34	11%	12%	12%	13%	14%	15%
35-59	16%	17%	19%	21%	22%	24%
60+	30%	30%	30%	31%	32%	32%
All ages	20%	21%	22%	23%	25%	26%

These figures are equal to the number of people in the age group projected to live in a 'one adult' household, divided by the projected population of that age and gender (including those living in communal establishments)

Table 4b: Projected percentage of people living alone in Loch Lomond and the Trossachs National Park, by gender and age group, 2008-2033

Age group	2008	2013	2018	2023	2028	2033
Males						
16-34	7%	8%	9%	10%	10%	9%
35-59	12%	14%	15%	16%	17%	18%
60+	18%	19%	20%	23%	25%	28%
All ages	13%	14%	16%	18%	19%	21%
Females						
16-34	5%	5%	6%	6%	7%	8%
35-59	9%	10%	11%	11%	12%	12%
60+	31%	30%	30%	30%	29%	29%
All ages	16%	17%	18%	19%	19%	20%
Total						
16-34	6%	6%	7%	8%	8%	8%
35-59	11%	12%	13%	14%	14%	15%
60+	25%	25%	26%	26%	27%	28%
All ages	15%	16%	17%	18%	19%	20%

These figures are equal to the number of people in the age group projected to live in a 'one adult' household, divided by the projected population of that age and gender (including those living in communal establishments)

Table 5a: Household projections for Aberdeen City & Shire SDP area, by type of household, 2008-2033

Household size	Household type	2008	2013	2018	2023	2028	2033	Change		Average annual change ¹		
								2008-2033		2008-2033	2008-2018	2018-2033
One person households	1 adult male	34,970	39,580	43,890	47,770	51,410	55,030	20,060	57%	803	892	743
	1 adult female	38,650	42,080	45,700	49,510	53,580	57,870	19,220	50%	769	705	811
Two person households	2 adults	63,290	69,270	75,070	79,780	83,060	85,680	22,390	35%	896	1,178	707
	1 adult, 1 child	6,500	7,250	7,970	8,600	9,220	9,810	3,310	51%	132	147	123
3+ person households	1 adult, 2+ children	5,420	5,780	6,210	6,700	7,090	7,320	1,900	35%	76	79	74
	2+ adult 1+ children	38,480	36,310	34,250	32,700	31,850	30,890	-7,590	-20%	-303	-423	-224
	3+ person all adult	15,610	14,730	13,600	12,400	11,510	10,900	-4,710	-30%	-189	-202	-180
All households		202,910	215,010	226,680	237,450	247,720	257,500	54,590	27%	2,183	2,377	2,055
Private household population²		437,710	453,250	466,960	479,530	489,810	498,020	60,300	14%			
Average household size³		2.16	2.11	2.06	2.02	1.98	1.93	-0.22	-10%			

Percentage of all households by household type

Household size	Household type	2008	2013	2018	2023	2028	2033
One person households	1 adult male	17%	18%	19%	20%	21%	21%
	1 adult female	19%	20%	20%	21%	22%	22%
Two person households	2 adults	31%	32%	33%	34%	34%	33%
	1 adult, 1 child	3%	3%	4%	4%	4%	4%
3+ person households	1 adult, 2+ children	3%	3%	3%	3%	3%	3%
	2+ adult 1+ children	19%	17%	15%	14%	13%	12%
	3+ person all adult	8%	7%	6%	5%	5%	4%
All households		100%	100%	100%	100%	100%	100%

1. Average annual change is the result of dividing the absolute change (before rounding) by the number of years referred to.

2. Private household population: The population living in private households, i.e. people not living in communal establishments.

3. Average household size is the result of dividing "private household population" by "all households"

Table 5b: Household projections for Glasgow & Clyde Valley SDP area, by type of household, 2008-2033

Household size	Household type							Change		Average annual change ¹		
		2008	2013	2018	2023	2028	2033	2008-2033		2008-2033	2008-2018	2018-2033
One person households	1 adult male	134,040	150,390	165,980	179,350	190,560	201,470	67,430	50%	2,697	3,194	2,366
	1 adult female	167,240	181,600	196,540	209,840	221,860	233,430	66,190	40%	2,647	2,930	2,459
Two person households	2 adults	210,800	220,460	230,490	237,120	239,570	240,280	29,480	14%	1,179	1,969	653
	1 adult, 1 child	40,580	45,410	49,380	53,130	56,770	59,960	19,380	48%	775	880	705
3+ person households	1 adult, 2+ children	26,820	27,930	29,610	31,290	32,060	31,990	5,170	19%	207	279	158
	2+ adult 1+ children	145,360	131,310	118,500	108,320	101,350	94,430	-50,930	-35%	-2,037	-2,686	-1,605
	3+ person all adult	69,580	66,460	61,680	55,380	50,350	47,380	-22,200	-32%	-888	-791	-953
All households		794,440	823,560	852,200	874,440	892,520	908,950	114,510	14%	4,581	5,776	3,784
Private household population²		1,726,810	1,737,910	1,742,930	1,743,120	1,735,340	1,720,630	-6,180	0%			
Average household size³		2.17	2.11	2.05	1.99	1.94	1.89	-0.28	-13%			

Percentage of all households by household type

Household size	Household type	2008	2013	2018	2023	2028	2033
One person households	1 adult male	17%	18%	19%	21%	21%	22%
	1 adult female	21%	22%	23%	24%	25%	26%
Two person households	2 adults	27%	27%	27%	27%	27%	26%
	1 adult, 1 child	5%	6%	6%	6%	6%	7%
3+ person households	1 adult, 2+ children	3%	3%	3%	4%	4%	4%
	2+ adult 1+ children	18%	16%	14%	12%	11%	10%
	3+ person all adult	9%	8%	7%	6%	6%	5%
All households		100%	100%	100%	100%	100%	100%

1. Average annual change is the result of dividing the absolute change (before rounding) by the number of years referred to.

2. Private household population: The population living in private households, i.e. people not living in communal establishments.

3. Average household size is the result of dividing "private household population" by "all households"

Table 5c: Household projections for SESplan SDP area, by type of household, 2008-2033

Household size	Household type							Change		Average annual change ¹		
		2008	2013	2018	2023	2028	2033	2008-2033		2008-2033	2008-2018	2018-2033
One person households	1 adult male	84,760	96,550	109,060	120,890	131,830	142,810	58,050	68%	2,322	2,430	2,250
	1 adult female	109,500	119,980	131,630	142,720	153,340	164,360	54,860	50%	2,194	2,213	2,182
Two person households	2 adults	168,280	181,100	194,080	204,790	212,800	220,350	52,080	31%	2,083	2,580	1,752
	1 adult, 1 child	19,850	22,670	25,460	28,370	31,640	34,780	14,930	75%	597	561	621
3+ person households	1 adult, 2+ children	15,320	16,450	18,030	19,990	21,580	22,800	7,480	49%	299	271	318
	2+ adult 1+ children	100,540	95,580	91,320	88,670	87,710	85,670	-14,870	-15%	-595	-922	-376
	3+ person all adult	45,380	44,820	43,650	41,670	41,150	41,700	-3,690	-8%	-147	-173	-130
All households		543,620	577,140	613,220	647,090	680,060	712,460	168,840	31%	6,754	6,959	6,617
Private household population²		1,191,240	1,236,850	1,280,360	1,322,390	1,359,730	1,392,500	201,260	17%			
Average household size³		2.19	2.14	2.09	2.04	2.00	1.95	-0.24	-11%			

Percentage of all households by household type

Household size	Household type	2008	2013	2018	2023	2028	2033
One person households	1 adult male	16%	17%	18%	19%	19%	20%
	1 adult female	20%	21%	21%	22%	23%	23%
Two person households	2 adults	31%	31%	32%	32%	31%	31%
	1 adult, 1 child	4%	4%	4%	4%	5%	5%
3+ person households	1 adult, 2+ children	3%	3%	3%	3%	3%	3%
	2+ adult 1+ children	18%	17%	15%	14%	13%	12%
	3+ person all adult	8%	8%	7%	6%	6%	6%
All households		100%	100%	100%	100%	100%	100%

1. Average annual change is the result of dividing the absolute change (before rounding) by the number of years referred to.

2. Private household population: The population living in private households, i.e. people not living in communal establishments.

3. Average household size is the result of dividing "private household population" by "all households"

Table 5d: Household projections for TAYplan SDP area, by type of household, 2008-2033

Household size	Household type	2008	2013	2018	2023	2028	2033	Change		Average annual change ¹		
								2008-2033		2008-2033	2008-2018	2018-2033
One person households	1 adult male	33,770	38,060	42,060	45,590	48,930	52,230	18,460	55%	738	828	678
	1 adult female	44,880	48,360	51,480	54,480	57,630	60,780	15,900	35%	636	660	620
Two person households	2 adults	69,160	73,770	77,790	80,530	82,090	83,300	14,150	20%	566	863	368
	1 adult, 1 child	7,970	9,000	9,840	10,650	11,400	12,140	4,160	52%	167	187	153
3+ person households	1 adult, 2+ children	6,320	6,810	7,380	7,960	8,350	8,480	2,160	34%	87	106	74
	2+ adult 1+ children	37,290	34,660	32,340	30,870	30,030	28,820	-8,470	-23%	-339	-495	-234
	3+ person all adult	16,490	16,060	15,060	13,930	13,570	13,510	-2,970	-18%	-119	-143	-103
All households		215,880	226,740	235,930	244,000	252,000	259,270	43,390	20%	1,736	2,005	1,556
Private household population²		460,450	470,980	479,490	487,190	492,480	495,650	35,190	8%			
Average household size³		2.13	2.08	2.03	2.00	1.95	1.91	-0.22	-10%			

Percentage of all households by household type

Household size	Household type	2008	2013	2018	2023	2028	2033
One person households	1 adult male	16%	17%	18%	19%	19%	20%
	1 adult female	21%	21%	22%	22%	23%	23%
Two person households	2 adults	32%	33%	33%	33%	33%	32%
	1 adult, 1 child	4%	4%	4%	4%	5%	5%
3+ person households	1 adult, 2+ children	3%	3%	3%	3%	3%	3%
	2+ adult 1+ children	17%	15%	14%	13%	12%	11%
	3+ person all adult	8%	7%	6%	6%	5%	5%
All households		100%	100%	100%	100%	100%	100%

1. Average annual change is the result of dividing the absolute change (before rounding) by the number of years referred to.

2. Private household population: The population living in private households, i.e. people not living in communal establishments.

3. Average household size is the result of dividing "private household population" by "all households"

Table 6a: Household projections for Aberdeen City & Shire SDP area, by age group of the head of household, 2008-2033

Age of head of household	Year						Change		Average annual change ¹		
	2008	2013	2018	2023	2028	2033	2008-2033	%	2008-2033	2008-2018	2018-2033
16-19	1,820	1,950	2,090	2,480	2,900	3,170	1,360	75%	54	28	72
20-24	8,670	8,750	8,470	8,420	9,380	9,990	1,330	15%	53	-20	102
25-29	15,680	17,170	17,010	16,300	15,950	17,420	1,740	11%	70	133	27
30-34	15,990	18,600	20,130	20,020	19,190	18,710	2,720	17%	109	413	-94
35-39	19,410	17,150	19,610	21,020	20,810	19,870	470	2%	19	20	18
40-44	20,940	20,260	18,010	20,620	22,060	21,810	860	4%	34	-294	253
45-49	20,650	21,670	21,130	18,830	21,630	23,280	2,630	13%	105	48	143
50-54	19,120	20,750	21,760	21,140	18,770	21,460	2,340	12%	93	264	-20
55-59	17,050	18,450	19,760	20,430	19,580	17,160	110	1%	4	271	-174
60-64	15,610	16,490	17,780	18,900	19,390	18,430	2,820	18%	113	217	44
65-69	12,260	14,970	15,800	16,960	17,920	18,270	6,010	49%	240	354	164
70-74	11,490	12,010	14,850	15,790	17,020	18,030	6,550	57%	262	337	212
75-79	10,310	10,830	11,700	14,720	15,840	17,290	6,970	68%	279	139	372
80-84	7,640	8,520	9,470	10,600	13,620	14,870	7,220	94%	289	183	360
85-89	4,510	5,100	6,100	7,210	8,340	10,940	6,430	143%	257	159	322
90+	1,760	2,330	3,000	4,000	5,320	6,800	5,040	286%	201	124	253
All households	202,910	215,010	226,680	237,450	247,720	257,500	54,590	27%	2,183	2,377	2,055

Age of head of household	2008	2013	2018	2023	2028	2033
16-19	1%	1%	1%	1%	1%	1%
20-24	4%	4%	4%	4%	4%	4%
25-29	8%	8%	8%	7%	6%	7%
30-34	8%	9%	9%	8%	8%	7%
35-39	10%	8%	9%	9%	8%	8%
40-44	10%	9%	8%	9%	9%	8%
45-49	10%	10%	9%	8%	9%	9%
50-54	9%	10%	10%	9%	8%	8%
55-59	8%	9%	9%	9%	8%	7%
60-64	8%	8%	8%	8%	8%	7%
65-69	6%	7%	7%	7%	7%	7%
70-74	6%	6%	7%	7%	7%	7%
75-79	5%	5%	5%	6%	6%	7%
80-84	4%	4%	4%	4%	5%	6%
85-89	2%	2%	3%	3%	3%	4%
90+	1%	1%	1%	2%	2%	3%
All households	100%	100%	100%	100%	100%	100%

1. Average annual change is the result of dividing the absolute change (before rounding) by the number of years referred to.

Table 6b: Household projections for Glasgow & Clyde Valley SDP area, by age group of the head of household, 2008-2033

Age of head of household	2008 2013 2018 2023 2028 2033						Change		Average annual change ¹		
	2008	2013	2018	2023	2028	2033	2008-2033	%	2008-2033	2008-2018	2018-2033
16-19	5,690	5,730	5,670	6,450	7,310	7,670	1,980	35%	79	-2	133
20-24	33,610	33,370	31,820	30,490	33,660	36,220	2,620	8%	105	-178	293
25-29	61,400	67,610	66,230	62,740	59,380	64,300	2,900	5%	116	484	-129
30-34	63,530	76,410	83,560	81,480	76,750	72,120	8,590	14%	344	2,003	-762
35-39	76,590	65,890	78,820	85,670	82,860	77,430	840	1%	34	223	-92
40-44	85,310	78,140	66,800	79,890	86,620	83,420	-1,890	-2%	-76	-1,851	1,108
45-49	83,280	85,280	77,770	65,930	78,650	85,120	1,830	2%	73	-552	490
50-54	72,870	82,510	84,270	76,370	64,310	76,420	3,550	5%	142	1,140	-523
55-59	63,090	70,160	79,060	80,040	71,870	60,020	-3,080	-5%	-123	1,597	-1,269
60-64	59,080	58,950	65,150	72,560	72,620	64,270	5,190	9%	207	607	-59
65-69	50,210	55,130	55,290	61,120	67,860	67,480	17,270	34%	691	508	813
70-74	48,710	47,380	53,140	54,040	60,470	67,810	19,110	39%	764	443	978
75-79	41,120	41,290	41,060	46,400	47,380	53,350	12,220	30%	489	-7	819
80-84	27,980	30,820	33,060	34,000	39,290	40,780	12,790	46%	512	508	514
85-89	16,050	17,510	21,160	24,660	26,640	31,950	15,900	99%	636	511	719
90+	5,910	7,370	9,340	12,600	16,850	20,580	14,680	249%	587	343	750
All households	794,440	823,560	852,200	874,440	892,520	908,950	114,510	14%	4,581	5,776	3,784

Age of head of household	2008	2013	2018	2023	2028	2033
16-19	1%	1%	1%	1%	1%	1%
20-24	4%	4%	4%	3%	4%	4%
25-29	8%	8%	8%	7%	7%	7%
30-34	8%	9%	10%	9%	9%	8%
35-39	10%	8%	9%	10%	9%	9%
40-44	11%	9%	8%	9%	10%	9%
45-49	10%	10%	9%	8%	9%	9%
50-54	9%	10%	10%	9%	7%	8%
55-59	8%	9%	9%	9%	8%	7%
60-64	7%	7%	8%	8%	8%	7%
65-69	6%	7%	6%	7%	8%	7%
70-74	6%	6%	6%	6%	7%	7%
75-79	5%	5%	5%	5%	5%	6%
80-84	4%	4%	4%	4%	4%	4%
85-89	2%	2%	2%	3%	3%	4%
90+	1%	1%	1%	1%	2%	2%
All households	100%	100%	100%	100%	100%	100%

1. Average annual change is the result of dividing the absolute change (before rounding) by the number of years referred to.

Table 6c: Household projections for SESplan SDP area, by age group of the head of household, 2008-2033

Age of head of household	Year						Change		Average annual change ¹		
	2008	2013	2018	2023	2028	2033	2008-2033		2008-2033	2008-2018	2018-2033
16-19	5,330	5,900	6,290	7,380	8,660	9,540	4,210	79%	169	97	216
20-24	26,240	27,920	28,050	27,760	30,710	33,070	6,830	26%	273	181	334
25-29	42,850	46,760	48,420	47,550	46,250	50,220	7,370	17%	295	558	120
30-34	44,040	52,070	56,720	58,710	57,770	56,400	12,360	28%	494	1,268	-22
35-39	52,320	46,880	55,350	60,020	61,910	60,790	8,470	16%	339	303	363
40-44	56,700	54,290	48,880	57,660	62,490	64,600	7,900	14%	316	-782	1,048
45-49	53,750	57,710	55,480	50,110	59,310	64,030	10,280	19%	411	173	570
50-54	46,570	53,550	57,490	55,010	49,470	58,290	11,730	25%	469	1,093	53
55-59	43,450	46,060	52,680	56,000	53,080	47,260	3,800	9%	152	922	-362
60-64	42,270	41,910	44,190	49,950	52,450	49,160	6,900	16%	276	193	331
65-69	33,740	40,720	40,460	42,500	47,760	49,840	16,100	48%	644	672	625
70-74	31,870	33,060	40,580	40,750	43,160	48,830	16,960	53%	678	871	550
75-79	27,240	28,910	30,670	37,940	38,390	40,990	13,750	50%	550	343	688
80-84	20,180	21,690	24,270	26,460	33,240	34,040	13,850	69%	554	409	651
85-89	12,350	13,390	15,660	18,820	21,420	27,790	15,440	125%	618	331	809
90+	4,730	6,310	8,010	10,470	13,990	17,620	12,890	272%	515	328	641
All households	543,620	577,140	613,220	647,090	680,060	712,460	168,840	31%	6,754	6,959	6,617

Age of head of household	2008	2013	2018	2023	2028	2033
16-19	1%	1%	1%	1%	1%	1%
20-24	5%	5%	5%	4%	5%	5%
25-29	8%	8%	8%	7%	7%	7%
30-34	8%	9%	9%	9%	8%	8%
35-39	10%	8%	9%	9%	9%	9%
40-44	10%	9%	8%	9%	9%	9%
45-49	10%	10%	9%	8%	9%	9%
50-54	9%	9%	9%	9%	7%	8%
55-59	8%	8%	9%	9%	8%	7%
60-64	8%	7%	7%	8%	8%	7%
65-69	6%	7%	7%	7%	7%	7%
70-74	6%	6%	7%	6%	6%	7%
75-79	5%	5%	5%	6%	6%	6%
80-84	4%	4%	4%	4%	5%	5%
85-89	2%	2%	3%	3%	3%	4%
90+	1%	1%	1%	2%	2%	2%
All households	100%	100%	100%	100%	100%	100%

1. Average annual change is the result of dividing the absolute change (before rounding) by the number of years referred to.

Table 6d: Household projections for TAYplan SDP area, by age group of the head of household, 2008-2033

Age of head of household	Year						Change		Average annual change ¹		
	2008	2013	2018	2023	2028	2033	2008-2033		2008-2033	2008-2018	2018-2033
16-19	2,160	2,350	2,410	2,820	3,260	3,550	1,390	64%	56	25	76
20-24	10,140	10,400	10,400	10,070	11,100	11,980	1,840	18%	73	26	105
25-29	13,750	16,840	15,980	15,500	14,590	15,670	1,920	14%	77	223	-21
30-34	12,900	15,960	19,350	18,150	17,480	16,370	3,480	27%	139	645	-198
35-39	17,430	14,170	17,230	20,750	19,460	18,730	1,300	7%	52	-20	100
40-44	20,720	18,980	15,520	18,830	22,650	21,210	490	2%	20	-520	379
45-49	21,250	21,880	20,050	16,490	19,930	23,930	2,680	13%	107	-120	259
50-54	18,660	21,250	21,670	19,710	16,150	19,200	540	3%	22	300	-164
55-59	17,750	18,020	20,100	20,130	18,070	14,690	-3,070	-17%	-123	235	-361
60-64	18,650	17,940	18,150	20,120	20,020	17,900	-750	-4%	-30	-50	-17
65-69	16,070	19,150	18,630	18,970	21,100	21,140	5,070	32%	203	256	168
70-74	14,780	15,160	18,010	17,440	17,670	19,520	4,740	32%	189	322	101
75-79	13,000	13,720	14,380	17,280	16,890	17,270	4,260	33%	171	138	192
80-84	10,090	10,720	11,910	12,870	15,760	15,640	5,560	55%	222	182	249
85-89	6,110	6,870	7,880	9,390	10,600	13,350	7,240	119%	290	177	365
90+	2,410	3,320	4,270	5,490	7,270	9,130	6,710	278%	268	186	324
All households	215,880	226,740	235,930	244,000	252,000	259,270	43,390	20%	1,736	2,005	1,556

Age of head of household	2008	2013	2018	2023	2028	2033
16-19	1%	1%	1%	1%	1%	1%
20-24	5%	5%	4%	4%	4%	5%
25-29	6%	7%	7%	6%	6%	6%
30-34	6%	7%	8%	7%	7%	6%
35-39	8%	6%	7%	9%	8%	7%
40-44	10%	8%	7%	8%	9%	8%
45-49	10%	10%	8%	7%	8%	9%
50-54	9%	9%	9%	8%	6%	7%
55-59	8%	8%	9%	8%	7%	6%
60-64	9%	8%	8%	8%	8%	7%
65-69	7%	8%	8%	8%	8%	8%
70-74	7%	7%	8%	7%	7%	8%
75-79	6%	6%	6%	7%	7%	7%
80-84	5%	5%	5%	5%	6%	6%
85-89	3%	3%	3%	4%	4%	5%
90+	1%	1%	2%	2%	3%	4%
All households	100%	100%	100%	100%	100%	100%

1. Average annual change is the result of dividing the absolute change (before rounding) by the number of years referred to.

Table 7a: Household projections for Aberdeen City & Shire SDP area, by household type and age group of the head of household, 2008-2033

Household type	Age group	2008	2013	2018	2023	2028	2033	Change		Average annual change ¹		
								2008-2033	2008-2033	2008-2033	2008-2018	2018-2033
1 adult: male	16-19	330	360	390	450	530	580	250	75%	10	6	13
	20-24	1,680	1,660	1,590	1,580	1,730	1,820	130	8%	5	-9	15
	25-29	4,300	4,960	5,050	5,020	5,100	5,710	1,410	33%	56	76	44
	30-34	3,660	4,690	5,410	5,620	5,630	5,720	2,060	56%	82	176	20
	35-39	3,500	3,470	4,360	4,940	5,050	5,020	1,520	43%	61	85	44
	40-44	3,360	3,580	3,480	4,290	4,810	4,910	1,550	46%	62	12	95
	45-49	3,440	3,900	4,100	3,940	4,810	5,310	1,870	54%	75	66	81
	50-54	2,950	3,450	3,820	3,930	3,730	4,510	1,560	53%	62	87	46
	55-59	2,500	2,930	3,380	3,710	3,770	3,480	980	39%	39	87	7
	60-64	2,320	2,620	2,990	3,360	3,610	3,600	1,280	55%	51	67	41
	65-69	1,570	1,930	2,070	2,230	2,380	2,420	850	54%	34	50	24
	70-74	1,610	1,740	2,210	2,410	2,650	2,860	1,260	78%	50	60	44
	75-79	1,510	1,640	1,840	2,380	2,630	2,930	1,430	95%	57	33	73
	80-84	1,110	1,250	1,410	1,600	2,080	2,300	1,190	107%	47	30	59
85-89	800	960	1,220	1,510	1,820	2,470	1,670	208%	67	41	84	
90+	320	440	590	800	1,090	1,400	1,080	331%	43	26	54	
All ages		34,970	39,580	43,890	47,770	51,410	55,030	20,060	57%	803	892	743
1 adult: female	16-19	500	540	590	700	820	910	410	83%	16	10	21
	20-24	1,650	1,700	1,710	1,770	2,000	2,190	530	32%	21	5	32
	25-29	2,870	3,350	3,460	3,490	3,580	4,040	1,170	41%	47	59	39
	30-34	1,990	2,560	2,920	2,970	2,940	3,000	1,010	51%	40	94	5
	35-39	1,800	1,800	2,280	2,610	2,690	2,680	880	49%	35	48	27
	40-44	1,680	1,790	1,760	2,190	2,440	2,460	780	47%	31	8	47
	45-49	1,930	2,140	2,210	2,090	2,510	2,750	820	42%	33	27	36
	50-54	2,210	2,520	2,730	2,760	2,570	3,040	820	37%	33	52	20
	55-59	2,440	2,650	2,850	2,950	2,850	2,550	110	5%	4	42	-20
	60-64	2,480	2,400	2,340	2,250	2,080	1,790	-690	-28%	-28	-14	-36
	65-69	2,780	3,110	2,990	2,900	2,760	2,540	-240	-9%	-10	21	-30
	70-74	3,690	3,610	4,120	4,090	4,080	4,020	330	9%	13	43	-7
	75-79	4,520	4,590	4,800	5,820	6,060	6,400	1,880	42%	75	28	107
	80-84	4,120	4,560	5,060	5,640	7,220	7,820	3,710	90%	148	94	184
85-89	2,800	3,170	3,790	4,490	5,210	6,850	4,050	144%	162	99	204	
90+	1,190	1,590	2,070	2,790	3,760	4,840	3,650	307%	146	89	185	
All ages		38,650	42,080	45,700	49,510	53,580	57,870	19,220	50%	769	705	811
1 adult, 1+ children	16-19	180	170	170	180	190	200	10	8%	1	-1	2
	20-24	950	1,010	1,010	1,000	1,100	1,160	210	22%	8	5	10
	25-29	1,410	1,540	1,580	1,550	1,520	1,630	220	16%	9	17	3
	30-34	1,920	2,280	2,540	2,660	2,660	2,670	750	39%	30	62	9
	35-39	2,720	2,670	3,240	3,610	3,720	3,720	1,010	37%	40	52	32
	40-44	2,460	2,670	2,660	3,230	3,640	3,810	1,350	55%	54	21	76
	45+	2,280	2,680	2,980	3,070	3,490	3,940	1,650	72%	66	69	64
	All ages	11,920	13,030	14,180	15,300	16,320	17,130	5,210	44%	208	226	197
2+ adults	16-19	710	790	860	1,060	1,260	1,400	680	96%	27	15	35
	20-24	3,810	3,920	3,800	3,810	4,320	4,640	830	22%	33	-1	56
	25-29	5,000	5,520	5,460	5,140	4,930	5,350	350	7%	14	46	-7
	30-34	3,530	4,270	4,810	4,950	4,830	4,760	1,240	35%	50	128	-3
	35-39	2,810	2,490	2,890	3,220	3,310	3,240	440	16%	17	9	23
	40-44	3,320	2,870	2,300	2,430	2,420	2,260	-1,060	-32%	-42	-102	-3
	45-49	6,360	5,880	5,060	3,980	4,070	3,970	-2,390	-38%	-96	-130	-73
	50-54	10,360	10,730	10,770	10,010	8,510	9,370	-990	-10%	-40	41	-94
	55-59	10,950	11,640	12,230	12,450	11,730	10,090	-860	-8%	-34	128	-143
	60-64	10,420	11,090	12,080	12,940	13,360	12,750	2,330	22%	93	166	45
	65-69	7,770	9,790	10,600	11,700	12,650	13,190	5,430	70%	217	284	173
	70-74	6,140	6,620	8,480	9,240	10,250	11,110	4,970	81%	199	234	176
	75-79	4,250	4,560	5,030	6,480	7,090	7,900	3,650	86%	146	78	191
	80-84	2,370	2,660	2,940	3,280	4,210	4,620	2,250	95%	90	57	112
85-89	880	940	1,070	1,170	1,260	1,550	670	76%	27	19	32	
90+	230	260	280	320	350	370	150	64%	6	5	6	
All ages		78,900	84,000	88,670	92,180	94,570	96,580	17,680	22%	707	977	528
2+ adults, 1+ children	16-19	90	90	80	90	90	90	0	0%	0	-1	1
	20-24	570	470	360	270	230	180	-380	-68%	-15	-21	-12
	25-29	2,090	1,800	1,450	1,100	830	690	-1,400	-67%	-56	-64	-51
	30-34	4,910	4,800	4,440	3,830	3,130	2,570	-2,340	-48%	-94	-47	-125
	35-39	8,580	6,720	6,840	6,640	6,040	5,210	-3,370	-39%	-135	-174	-109
	40-44	10,130	9,350	7,800	8,480	8,740	8,370	-1,760	-17%	-71	-233	38
	45-49	7,450	8,040	7,930	7,010	8,080	8,820	1,370	18%	55	47	60
	50-54	3,110	3,490	3,780	3,740	3,300	3,770	660	21%	26	67	-1
	55+	1,540	1,560	1,570	1,540	1,410	1,190	-350	-23%	-14	3	-26
	All ages	38,480	36,310	34,250	32,700	31,850	30,890	-7,590	-20%	-303	-423	-224
All households	All ages	202,910	215,010	226,680	237,450	247,720	257,500	54,590	27%	2,183	2,377	2,055

1. Average annual change is the result of dividing the absolute change (before rounding) by the number of years referred to.

Table 7b: Household projections for Glasgow & Clyde Valley SDP area, by household type and age group of the head of household, 2008-2033

Household type	Age group	Year						Change		Average annual change ¹		
		2008	2013	2018	2023	2028	2033	2008-2033	%	2008-2033	2008-2018	2018-2033
1 adult: male	16-19	850	870	860	970	1,090	1,140	280	33%	11	0	19
	20-24	5,570	5,580	5,390	5,200	5,770	6,220	650	12%	26	-18	55
	25-29	12,720	15,000	15,470	15,220	14,840	16,460	3,740	29%	150	275	66
	30-34	13,280	17,420	20,580	21,330	20,980	20,410	7,130	54%	285	730	-11
	35-39	13,330	12,610	16,160	18,810	19,280	18,800	5,470	41%	219	283	176
	40-44	14,300	14,460	13,390	16,970	19,450	19,640	5,340	37%	213	-91	416
	45-49	13,760	15,490	15,280	13,870	17,330	19,590	5,830	42%	233	152	287
	50-54	12,350	15,410	17,110	16,720	15,100	18,800	6,450	52%	258	477	112
	55-59	10,000	12,140	14,740	15,940	15,250	13,570	3,570	36%	143	474	-78
	60-64	9,240	9,980	11,870	14,130	15,000	14,070	4,830	52%	193	263	146
	65-69	7,230	8,300	8,720	10,090	11,690	12,120	4,890	68%	196	149	227
	70-74	7,140	7,280	8,510	9,060	10,610	12,410	5,270	74%	211	137	260
	75-79	6,590	6,950	7,290	8,640	9,250	10,810	4,230	64%	169	70	235
	80-84	4,200	4,770	5,270	5,600	6,640	7,080	2,890	69%	115	108	121
85-89	2,500	2,830	3,550	4,260	4,730	5,810	3,310	132%	132	104	151	
90+	980	1,320	1,780	2,530	3,540	4,540	3,560	365%	143	80	184	
All ages		134,040	150,390	165,980	179,350	190,560	201,470	67,430	50%	2,697	3,194	2,366
1 adult: female	16-19	1,320	1,350	1,350	1,540	1,750	1,840	520	39%	21	3	33
	20-24	6,380	6,840	6,970	7,030	8,060	8,970	2,600	41%	104	59	133
	25-29	11,570	14,270	15,230	15,350	15,240	17,160	5,590	48%	224	366	129
	30-34	8,720	11,510	13,840	14,600	14,490	14,180	5,460	63%	218	512	22
	35-39	7,980	7,610	9,820	11,640	12,150	11,940	3,960	50%	158	183	141
	40-44	8,750	8,940	8,330	10,610	12,300	12,540	3,790	43%	151	-42	281
	45-49	9,670	10,840	10,670	9,640	12,040	13,600	3,930	41%	157	100	195
	50-54	10,550	12,820	13,950	13,380	11,880	14,680	4,130	39%	165	340	49
	55-59	11,910	14,000	16,570	17,550	16,450	14,280	2,360	20%	95	466	-153
	60-64	13,180	13,220	14,580	16,190	16,200	14,320	1,140	9%	46	140	-17
	65-69	14,310	15,550	15,460	16,900	18,530	18,250	3,940	28%	158	115	186
	70-74	17,260	16,360	17,870	17,660	19,170	20,810	3,550	21%	142	61	196
	75-79	17,620	17,210	16,640	18,250	18,100	19,770	2,150	12%	86	-98	209
	80-84	14,620	15,870	16,730	16,890	19,170	19,520	4,910	34%	196	211	186
85-89	9,540	10,350	12,420	14,350	15,360	18,270	8,730	91%	349	288	390	
90+	3,870	4,850	6,130	8,260	10,990	13,310	9,440	244%	378	227	479	
All ages		167,240	181,600	196,540	209,840	221,860	233,430	66,190	40%	2,647	2,930	2,459
1 adult, 1+ children	16-19	1,100	1,030	960	1,040	1,130	1,140	40	3%	2	-14	12
	20-24	6,430	6,070	5,630	5,270	5,630	5,890	-540	-8%	-22	-80	17
	25-29	11,230	12,380	12,100	11,560	11,040	11,940	710	6%	29	87	-11
	30-34	12,410	15,620	17,480	17,350	16,740	16,070	3,660	30%	146	508	-94
	35-39	14,080	13,380	17,240	19,900	20,310	19,920	5,840	42%	234	317	179
	40-44	11,470	11,890	11,290	14,620	16,910	17,230	5,760	50%	231	-18	396
	45+	10,700	12,960	14,290	14,680	17,090	19,760	9,070	85%	363	359	365
	All ages		67,410	73,340	79,000	84,420	88,830	91,950	24,550	36%	982	1,159
2+ adults	16-19	1,950	2,050	2,110	2,490	2,900	3,120	1,170	60%	47	16	68
	20-24	12,540	12,850	12,330	11,870	13,240	14,340	1,800	14%	72	-21	134
	25-29	17,460	19,050	18,440	17,020	15,670	16,620	-850	-5%	-34	98	-122
	30-34	11,720	14,140	15,640	15,330	14,400	13,490	1,770	15%	71	392	-144
	35-39	10,360	8,840	10,520	11,320	10,740	9,870	-500	-5%	-20	15	-43
	40-44	13,800	11,650	9,290	10,460	10,580	9,530	-4,260	-31%	-171	-451	16
	45-49	24,420	22,490	18,560	14,360	15,800	15,520	-8,900	-36%	-356	-586	-203
	50-54	35,120	37,370	35,980	30,780	24,450	27,730	-7,390	-21%	-296	86	-550
	55-59	36,440	39,120	42,590	41,700	36,120	29,020	-7,420	-20%	-297	615	-905
	60-64	34,710	33,950	36,800	40,210	39,440	34,140	-570	-2%	-23	210	-178
	65-69	27,780	30,380	30,240	33,180	36,600	36,050	8,270	30%	331	246	388
	70-74	23,790	23,260	26,210	26,730	29,980	33,750	9,970	42%	399	242	503
	75-79	16,620	16,810	16,800	19,100	19,580	22,170	5,550	33%	222	18	358
	80-84	8,940	9,900	10,730	11,120	12,980	13,590	4,660	52%	186	179	191
85-89	3,880	4,160	4,960	5,740	6,160	7,370	3,500	90%	140	108	161	
90+	850	890	960	1,110	1,270	1,340	490	58%	20	11	26	
All ages		280,380	286,920	292,170	292,510	289,920	287,660	7,280	3%	291	1,179	-300
2+ adults, 1+ children	16-19	470	430	390	410	440	440	-30	-7%	-1	-8	3
	20-24	2,690	2,020	1,500	1,130	960	800	-1,890	-70%	-76	-119	-47
	25-29	8,420	6,910	5,000	3,590	2,600	2,130	-6,290	-75%	-252	-342	-191
	30-34	17,410	17,720	16,010	12,870	10,150	7,980	-9,430	-54%	-377	-139	-535
	35-39	30,830	23,440	25,080	24,010	20,390	16,900	-13,930	-45%	-557	-576	-545
	40-44	36,990	31,190	24,500	27,230	27,380	24,480	-12,510	-34%	-500	-1,249	-2
	45-49	29,410	29,440	26,090	21,380	24,940	26,580	-2,830	-10%	-113	-332	33
	50-54	12,650	14,080	14,010	12,280	9,930	11,470	-1,180	-9%	-47	136	-169
	55+	6,490	6,080	5,920	5,430	4,570	3,650	-2,840	-44%	-114	-57	-151
	All ages		145,360	131,310	118,500	108,320	101,350	94,430	-50,930	-35%	-2,037	-2,686
All households	All ages	794,440	823,560	852,200	874,440	892,520	908,950	114,510	14%	4,581	5,776	3,784

1. Average annual change is the result of dividing the absolute change (before rounding) by the number of years referred to.

Table 7c: Household projections for SESplan SDP area, by household type and age group of the head of household, 2008-2033

Household type	Age group	Year						Change		Average annual change ¹		
		2008	2013	2018	2023	2028	2033	2008-2033	%	2008-2033	2008-2018	2018-2033
1 adult: male	16-19	680	750	810	940	1,110	1,230	550	81%	22	13	28
	20-24	3,420	3,580	3,500	3,400	3,690	3,880	460	14%	18	8	25
	25-29	8,320	9,560	10,350	10,530	10,540	11,690	3,370	40%	135	203	89
	30-34	8,690	11,250	13,070	14,260	14,760	14,970	6,280	72%	251	438	127
	35-39	8,790	8,760	11,320	13,060	14,110	14,580	5,790	66%	232	253	217
	40-44	8,930	9,450	9,300	11,820	13,510	14,550	5,620	63%	225	37	350
	45-49	8,040	9,500	9,880	9,550	11,920	13,410	5,370	67%	215	184	235
	50-54	6,760	8,460	9,790	9,980	9,480	11,620	4,860	72%	194	303	122
	55-59	6,240	7,160	8,790	9,980	10,020	9,430	3,190	51%	128	255	43
	60-64	5,900	6,280	7,010	8,380	9,300	9,180	3,290	56%	131	112	145
	65-69	4,290	5,370	5,500	5,920	6,810	7,310	3,020	70%	121	121	121
	70-74	4,790	5,270	6,830	7,210	7,990	9,440	4,650	97%	186	205	174
	75-79	4,020	4,390	4,780	6,070	6,260	6,770	2,750	68%	110	76	133
	80-84	3,120	3,440	3,940	4,380	5,620	5,880	2,760	88%	110	82	129
	85-89	2,020	2,300	2,800	3,510	4,160	5,560	3,540	175%	141	77	184
	90+	750	1,050	1,380	1,870	2,570	3,300	2,560	343%	102	64	128
All ages		84,760	96,550	109,060	120,890	131,830	142,810	58,050	68%	2,322	2,430	2,250
1 adult: female	16-19	1,080	1,210	1,300	1,530	1,810	2,000	920	86%	37	22	47
	20-24	3,670	4,020	4,110	4,140	4,640	5,030	1,360	37%	54	44	61
	25-29	7,320	8,580	9,510	9,870	10,030	11,290	3,960	54%	159	219	118
	30-34	6,030	7,850	9,120	9,930	10,320	10,480	4,440	74%	178	309	90
	35-39	5,230	5,210	6,700	7,670	8,290	8,590	3,350	64%	134	147	126
	40-44	5,780	6,100	5,980	7,540	8,600	9,340	3,560	61%	142	20	224
	45-49	6,390	7,430	7,650	7,330	9,080	10,150	3,760	59%	151	126	167
	50-54	6,810	8,310	9,410	9,410	8,760	10,590	3,770	55%	151	260	78
	55-59	7,510	8,200	9,630	10,540	10,250	9,350	1,840	25%	74	213	-19
	60-64	8,620	8,400	8,590	9,410	9,590	8,740	120	1%	5	-3	10
	65-69	8,660	10,110	9,680	9,690	10,370	10,350	1,690	20%	68	102	45
	70-74	10,430	10,350	12,140	11,630	11,670	12,530	2,100	20%	84	172	26
	75-79	11,260	11,510	11,760	13,960	13,520	13,790	2,530	22%	101	50	135
	80-84	10,150	10,630	11,620	12,370	15,140	15,040	4,890	48%	196	147	228
	85-89	7,420	7,960	9,210	10,930	12,290	15,770	8,350	113%	334	179	437
	90+	3,120	4,110	5,190	6,750	8,990	11,320	8,200	263%	328	207	409
All ages		109,500	119,980	131,630	142,720	153,340	164,360	54,860	50%	2,194	2,213	2,182
1 adult, 1+ children	16-19	780	830	850	960	1,080	1,170	390	50%	16	7	21
	20-24	3,050	3,290	3,230	3,140	3,430	3,630	570	19%	23	17	27
	25-29	4,750	5,460	5,950	5,880	5,740	6,270	1,510	32%	61	119	22
	30-34	5,720	6,840	7,950	8,800	8,920	8,900	3,180	55%	127	222	63
	35-39	7,520	7,260	9,030	10,590	11,770	12,180	4,660	62%	186	151	210
	40-44	6,730	7,240	7,090	8,860	10,360	11,540	4,810	72%	193	36	297
	45+	6,600	8,210	9,410	10,130	11,940	13,890	7,290	110%	292	281	299
	All ages		35,160	39,110	43,490	48,350	53,230	57,580	22,410	64%	896	832
2+ adults	16-19	2,380	2,700	2,930	3,490	4,170	4,630	2,250	95%	90	56	113
	20-24	13,570	14,630	15,140	15,300	17,220	18,910	5,340	39%	213	157	251
	25-29	16,540	17,920	18,220	17,860	17,330	18,720	2,180	13%	87	168	33
	30-34	10,670	13,180	14,420	14,860	14,730	14,500	3,820	36%	153	375	5
	35-39	8,330	7,520	8,990	9,640	9,780	9,540	1,220	15%	49	67	37
	40-44	9,670	8,340	6,820	7,440	7,530	7,270	-2,400	-25%	-96	-285	30
	45-49	16,780	16,110	13,860	11,130	11,900	11,970	-4,810	-29%	-192	-292	-126
	50-54	24,140	26,340	26,810	24,350	20,750	23,420	-730	-3%	-29	267	-227
	55-59	26,700	27,620	30,830	31,940	29,550	25,660	-1,050	-4%	-42	412	-345
	60-64	26,410	25,950	27,290	30,740	32,110	29,920	3,520	13%	141	88	176
	65-69	20,220	24,560	24,590	26,170	29,750	31,290	11,070	55%	443	437	447
	70-74	16,330	17,080	21,140	21,420	22,960	26,210	9,890	61%	395	482	338
	75-79	11,710	12,720	13,780	17,400	18,040	19,760	8,050	69%	322	206	399
	80-84	6,700	7,360	8,380	9,310	11,920	12,470	5,770	86%	231	169	272
	85-89	2,790	2,980	3,440	4,070	4,580	5,890	3,100	111%	124	65	164
	90+	730	920	1,090	1,330	1,640	1,900	1,170	160%	47	36	54
All ages		213,660	225,920	237,730	246,460	253,950	262,050	48,390	23%	1,936	2,407	1,622
2+ adults, 1+ children	16-19	420	420	410	450	500	520	100	24%	4	-1	7
	20-24	2,520	2,390	2,070	1,780	1,730	1,620	-900	-36%	-36	-45	-30
	25-29	5,910	5,250	4,400	3,390	2,620	2,260	-3,650	-62%	-146	-151	-143
	30-34	12,920	12,950	12,160	10,860	9,040	7,550	-5,370	-42%	-215	-76	-307
	35-39	22,440	18,130	19,300	19,050	17,960	15,890	-6,550	-29%	-262	-314	-227
	40-44	25,590	23,170	19,690	22,000	22,490	21,900	-3,690	-14%	-148	-590	147
	45-49	18,930	20,300	19,450	17,570	20,810	22,090	3,170	17%	127	53	176
	50-54	7,590	8,830	9,580	9,280	8,550	10,250	2,670	35%	107	199	45
	55+	4,230	4,130	4,250	4,280	4,020	3,590	-640	-15%	-26	2	-44
	All ages		100,540	95,580	91,320	88,670	87,710	85,670	-14,870	-15%	-595	-922
All households	All ages	543,620	577,140	613,220	647,090	680,060	712,460	168,840	31%	6,754	6,959	6,617

1. Average annual change is the result of dividing the absolute change (before rounding) by the number of years referred to.

Table 7d: Household projections for TAYplan SDP area, by household type and age group of the head of household, 2008-2033

Household type	Age group	Year						Change		Average annual change ¹		
		2008	2013	2018	2023	2028	2033	2008-2033	%	2008-2033	2008-2018	2018-2033
1 adult: male	16-19	370	410	420	500	590	640	280	75%	11	6	15
	20-24	1,610	1,620	1,620	1,570	1,700	1,820	210	13%	8	0	14
	25-29	2,880	3,790	3,850	3,930	3,840	4,250	1,370	48%	55	97	26
	30-34	2,470	3,330	4,370	4,420	4,480	4,360	1,900	77%	76	190	0
	35-39	2,980	2,640	3,500	4,510	4,530	4,570	1,590	53%	63	51	72
	40-44	3,190	3,220	2,820	3,660	4,660	4,640	1,460	46%	58	-36	121
	45-49	3,280	3,700	3,650	3,150	4,000	5,050	1,770	54%	71	37	94
	50-54	2,700	3,350	3,660	3,530	3,000	3,770	1,060	39%	43	96	7
	55-59	2,750	3,060	3,680	3,930	3,730	3,130	380	14%	15	93	-37
	60-64	2,530	2,600	2,790	3,250	3,410	3,180	640	25%	26	26	26
	65-69	2,230	2,820	2,900	3,100	3,610	3,760	1,530	68%	61	67	57
	70-74	1,970	2,080	2,550	2,530	2,620	2,960	990	50%	40	58	27
	75-79	1,700	1,770	1,820	2,140	2,060	2,090	390	23%	15	12	18
	80-84	1,530	1,660	1,880	2,080	2,600	2,630	1,100	72%	44	35	50
85-89	1,170	1,410	1,710	2,130	2,510	3,280	2,110	180%	84	54	105	
90+	410	600	840	1,140	1,600	2,100	1,690	415%	68	43	84	
All ages	33,770	38,060	42,060	45,590	48,930	52,230	18,460	55%	738	828	678	
1 adult: female	16-19	490	530	550	640	750	820	330	68%	13	6	18
	20-24	1,460	1,480	1,500	1,460	1,580	1,700	240	17%	10	4	14
	25-29	2,130	2,880	2,960	3,050	3,010	3,370	1,240	58%	49	84	27
	30-34	1,450	1,980	2,640	2,730	2,790	2,740	1,290	89%	52	119	7
	35-39	1,360	1,180	1,520	1,990	2,040	2,080	710	52%	28	16	37
	40-44	1,840	1,830	1,580	2,010	2,560	2,540	700	38%	28	-26	64
	45-49	2,480	2,780	2,730	2,370	3,020	3,810	1,330	54%	53	25	72
	50-54	2,540	3,010	3,150	2,950	2,460	3,010	480	19%	19	61	-9
	55-59	2,570	2,560	2,790	2,740	2,400	1,880	-680	-27%	-27	22	-60
	60-64	3,710	3,460	3,390	3,610	3,420	2,920	-790	-21%	-32	-32	-31
	65-69	4,080	4,650	4,310	4,170	4,390	4,140	60	1%	2	23	-11
	70-74	4,940	4,860	5,520	5,100	4,910	5,150	220	4%	9	58	-24
	75-79	5,430	5,510	5,550	6,400	5,990	5,850	420	8%	17	12	20
	80-84	5,170	5,380	5,860	6,230	7,490	7,300	2,130	41%	85	69	95
85-89	3,590	3,970	4,480	5,260	5,840	7,250	3,660	102%	147	89	185	
90+	1,650	2,280	2,940	3,780	4,980	6,220	4,570	278%	183	129	218	
All ages	44,880	48,360	51,480	54,480	57,630	60,780	15,900	35%	636	660	620	
1 adult, 1+ children	16-19	290	300	300	330	360	380	90	29%	3	0	6
	20-24	1,360	1,320	1,300	1,240	1,310	1,380	20	1%	1	-7	6
	25-29	2,390	2,940	2,820	2,790	2,690	2,930	530	22%	21	43	7
	30-34	2,350	3,120	3,850	3,690	3,650	3,520	1,170	50%	47	150	-22
	35-39	2,970	2,680	3,560	4,500	4,440	4,460	1,490	50%	60	59	60
	40-44	2,590	2,660	2,400	3,160	4,010	3,920	1,340	52%	54	-18	101
	45+	2,340	2,780	2,990	2,910	3,300	4,030	1,690	72%	67	65	69
	All ages	14,290	15,820	17,220	18,610	19,750	20,620	6,330	44%	253	292	227
2+ adults	16-19	860	960	1,000	1,200	1,400	1,530	670	78%	27	14	36
	20-24	4,780	5,210	5,320	5,250	6,010	6,600	1,810	38%	72	54	85
	25-29	3,840	4,790	4,540	4,330	3,990	4,220	380	10%	15	70	-21
	30-34	2,370	2,990	3,780	3,620	3,510	3,300	930	39%	37	141	-32
	35-39	2,250	1,780	2,090	2,540	2,400	2,320	70	3%	3	-16	16
	40-44	3,500	2,880	2,160	2,400	2,720	2,470	-1,030	-29%	-41	-134	20
	45-49	6,890	6,420	5,380	4,120	4,640	5,110	-1,790	-26%	-71	-151	-18
	50-54	9,870	10,740	10,490	9,190	7,340	8,450	-1,420	-14%	-57	62	-136
	55-59	11,210	11,200	12,340	12,200	10,860	8,830	-2,380	-21%	-95	112	-233
	60-64	11,920	11,450	11,580	12,860	12,830	11,510	-410	-3%	-17	-34	-5
	65-69	9,530	11,420	11,180	11,470	12,870	13,010	3,480	37%	139	165	122
	70-74	7,810	8,150	9,870	9,730	10,050	11,320	3,520	45%	141	206	97
	75-79	5,820	6,380	6,960	8,660	8,770	9,240	3,420	59%	137	113	152
	80-84	3,340	3,620	4,100	4,500	5,590	5,630	2,300	69%	92	77	102
85-89	1,330	1,470	1,660	1,970	2,210	2,770	1,440	108%	58	33	74	
90+	320	360	390	410	460	490	180	55%	7	7	7	
All ages	85,640	89,840	92,840	94,460	95,650	96,820	11,170	13%	447	720	265	
2+ adults, 1+ children	16-19	150	150	140	150	160	170	30	18%	1	-1	2
	20-24	920	770	660	560	510	470	-450	-49%	-18	-26	-13
	25-29	2,520	2,450	1,800	1,400	1,070	910	-1,610	-64%	-64	-71	-60
	30-34	4,260	4,540	4,700	3,690	3,050	2,450	-1,810	-43%	-73	44	-150
	35-39	7,870	5,890	6,570	7,210	6,060	5,310	-2,560	-33%	-102	-129	-84
	40-44	9,610	8,380	6,550	7,610	8,690	7,630	-1,980	-21%	-79	-306	72
	45-49	7,180	7,340	6,650	5,390	6,410	7,570	390	5%	16	-53	61
	50-54	3,030	3,480	3,590	3,280	2,680	3,140	110	4%	4	56	-30
55+	1,750	1,660	1,660	1,590	1,420	1,170	-580	-33%	-23	-9	-32	
All ages	37,290	34,660	32,340	30,870	30,030	28,820	-8,470	-23%	-339	-495	-234	
All households	All ages	215,880	226,740	235,930	244,000	252,000	259,270	43,390	20%	1,736	2,005	1,556

1. Average annual change is the result of dividing the absolute change (before rounding) by the number of years referred to.

Table 8a: Projected percentage of people living alone in Aberdeen City & Shire SDP area, by gender and age group, 2008-2033

Age group	2008	2013	2018	2023	2028	2033
Males						
16-19	3%	3%	4%	4%	5%	5%
20-24	11%	11%	11%	12%	12%	13%
25-29	27%	31%	32%	34%	37%	39%
30-34	26%	29%	33%	35%	37%	40%
35-39	22%	24%	26%	29%	31%	32%
40-44	19%	22%	24%	25%	28%	29%
45-49	20%	22%	25%	27%	28%	31%
50-54	18%	20%	22%	24%	25%	26%
55-59	17%	18%	20%	22%	23%	24%
60-64	17%	18%	19%	21%	22%	23%
65-69	16%	16%	16%	15%	16%	16%
70-74	20%	20%	20%	20%	20%	20%
75-79	25%	24%	24%	24%	24%	25%
80-84	29%	27%	26%	26%	25%	26%
85-89	42%	41%	40%	39%	41%	41%
90+	49%	44%	40%	38%	36%	36%
All ages	19%	21%	22%	24%	25%	26%
Females						
16-19	4%	5%	6%	7%	8%	8%
20-24	11%	11%	12%	13%	14%	15%
25-29	21%	21%	22%	25%	26%	28%
30-34	15%	18%	18%	19%	20%	21%
35-39	11%	13%	15%	16%	16%	18%
40-44	9%	11%	12%	14%	14%	15%
45-49	11%	12%	13%	15%	16%	16%
50-54	14%	15%	15%	16%	18%	20%
55-59	17%	17%	17%	17%	17%	18%
60-64	19%	17%	15%	13%	12%	11%
65-69	27%	25%	22%	20%	17%	15%
70-74	41%	37%	35%	32%	29%	26%
75-79	56%	56%	54%	53%	51%	49%
80-84	68%	70%	73%	74%	76%	76%
85-89	73%	77%	81%	86%	87%	91%
90+	60%	64%	69%	74%	78%	81%
All ages	21%	22%	23%	24%	25%	27%
Total						
16-19	4%	4%	5%	6%	6%	7%
20-24	11%	11%	12%	12%	13%	14%
25-29	24%	26%	27%	29%	32%	33%
30-34	21%	23%	26%	27%	29%	31%
35-39	16%	19%	21%	23%	24%	25%
40-44	14%	16%	18%	20%	21%	22%
45-49	16%	17%	19%	21%	23%	24%
50-54	16%	17%	19%	20%	22%	23%
55-59	17%	18%	18%	19%	20%	21%
60-64	18%	18%	17%	17%	17%	17%
65-69	22%	20%	19%	18%	16%	15%
70-74	31%	29%	27%	26%	25%	23%
75-79	43%	41%	40%	39%	38%	37%
80-84	53%	52%	52%	53%	53%	52%
85-89	63%	64%	65%	66%	68%	69%
90+	58%	58%	60%	61%	62%	63%
All ages	20%	21%	23%	24%	25%	26%

These figures are equal to the number of people in the age group projected to live in a 'one adult' household, divided by the projected population of that age and gender (including those living in communal establishments)

Table 8b: Projected percentage of people living alone in Glasgow & Clyde Valley SDP area, by gender and age group, 2008-2033

Age group	2008	2013	2018	2023	2028	2033
Males						
16-19	2%	2%	2%	2%	3%	3%
20-24	9%	9%	10%	10%	11%	11%
25-29	20%	22%	24%	26%	28%	30%
30-34	25%	27%	31%	34%	37%	39%
35-39	22%	25%	26%	29%	32%	34%
40-44	22%	25%	27%	29%	31%	33%
45-49	21%	25%	27%	29%	30%	32%
50-54	22%	25%	28%	31%	33%	34%
55-59	20%	22%	25%	27%	29%	31%
60-64	20%	22%	24%	25%	28%	29%
65-69	20%	20%	21%	22%	23%	24%
70-74	24%	24%	24%	25%	26%	27%
75-79	29%	29%	29%	29%	30%	31%
80-84	31%	31%	30%	30%	29%	29%
85-89	40%	38%	38%	37%	37%	36%
90+	45%	45%	44%	44%	44%	45%
All ages	20%	22%	24%	26%	27%	29%
Females						
16-19	3%	3%	4%	4%	4%	5%
20-24	10%	11%	13%	14%	15%	17%
25-29	19%	22%	25%	28%	30%	32%
30-34	16%	19%	22%	24%	27%	28%
35-39	12%	14%	16%	19%	21%	23%
40-44	12%	14%	16%	18%	20%	22%
45-49	14%	15%	17%	19%	21%	23%
50-54	17%	19%	20%	22%	24%	26%
55-59	23%	24%	25%	26%	28%	30%
60-64	26%	26%	26%	25%	25%	25%
65-69	34%	34%	33%	32%	31%	30%
70-74	43%	43%	43%	41%	39%	37%
75-79	52%	51%	50%	49%	48%	45%
80-84	61%	61%	61%	61%	62%	61%
85-89	65%	68%	70%	72%	74%	77%
90+	54%	57%	61%	64%	67%	68%
All ages	22%	24%	26%	28%	29%	31%
Total						
16-19	2%	3%	3%	3%	4%	4%
20-24	9%	10%	11%	12%	13%	14%
25-29	19%	22%	25%	27%	29%	31%
30-34	21%	23%	26%	29%	32%	34%
35-39	17%	19%	21%	24%	26%	28%
40-44	17%	19%	22%	23%	26%	28%
45-49	17%	20%	22%	24%	26%	28%
50-54	19%	22%	24%	26%	28%	30%
55-59	21%	23%	25%	27%	28%	30%
60-64	23%	24%	25%	25%	26%	27%
65-69	28%	27%	27%	27%	27%	27%
70-74	35%	34%	34%	34%	33%	33%
75-79	43%	42%	41%	40%	40%	39%
80-84	50%	50%	49%	48%	48%	47%
85-89	57%	58%	59%	59%	60%	60%
90+	52%	54%	56%	58%	59%	60%
All ages	21%	23%	25%	27%	28%	30%

These figures are equal to the number of people in the age group projected to live in a 'one adult' household, divided by the projected population of that age and gender (including those living in communal establishments)

Table 8c: Projected percentage of people living alone in SESplan SDP area, by gender and age group, 2008-2033

Age group	2008	2013	2018	2023	2028	2033
Males						
16-19	2%	3%	3%	3%	4%	4%
20-24	8%	8%	8%	9%	9%	9%
25-29	19%	20%	22%	24%	25%	26%
30-34	23%	25%	27%	30%	32%	34%
35-39	20%	23%	25%	27%	29%	32%
40-44	19%	22%	24%	26%	29%	30%
45-49	18%	21%	23%	25%	27%	29%
50-54	18%	20%	22%	24%	25%	26%
55-59	18%	19%	21%	23%	24%	26%
60-64	17%	19%	19%	21%	22%	23%
65-69	17%	17%	17%	17%	18%	18%
70-74	22%	23%	24%	25%	26%	27%
75-79	25%	24%	24%	24%	24%	24%
80-84	30%	29%	28%	28%	27%	28%
85-89	39%	37%	37%	36%	37%	37%
90+	43%	39%	37%	36%	35%	35%
All ages	18%	19%	21%	22%	24%	25%
Females						
16-19	4%	4%	5%	5%	6%	7%
20-24	8%	9%	10%	10%	11%	11%
25-29	16%	18%	20%	22%	23%	25%
30-34	15%	17%	19%	21%	23%	24%
35-39	11%	13%	15%	16%	17%	19%
40-44	12%	13%	15%	16%	18%	20%
45-49	14%	15%	17%	18%	20%	21%
50-54	17%	18%	19%	21%	22%	23%
55-59	20%	21%	21%	22%	23%	24%
60-64	24%	23%	22%	21%	20%	20%
65-69	30%	29%	27%	26%	24%	23%
70-74	41%	39%	37%	35%	33%	31%
75-79	51%	50%	49%	47%	44%	42%
80-84	61%	60%	61%	60%	59%	57%
85-89	68%	71%	73%	76%	77%	78%
90+	56%	59%	63%	66%	69%	71%
All ages	21%	22%	23%	25%	26%	27%
Total						
16-19	3%	3%	4%	4%	5%	5%
20-24	8%	9%	9%	9%	10%	10%
25-29	18%	19%	21%	23%	24%	25%
30-34	19%	21%	23%	25%	27%	29%
35-39	16%	18%	20%	22%	23%	25%
40-44	15%	17%	19%	21%	23%	25%
45-49	16%	18%	20%	22%	23%	25%
50-54	17%	19%	20%	22%	24%	25%
55-59	19%	20%	21%	22%	23%	25%
60-64	21%	21%	21%	21%	21%	21%
65-69	24%	23%	23%	22%	21%	21%
70-74	32%	32%	31%	30%	29%	29%
75-79	40%	39%	38%	37%	35%	34%
80-84	49%	48%	47%	46%	45%	44%
85-89	58%	59%	59%	60%	60%	61%
90+	53%	54%	55%	56%	57%	57%
All ages	19%	21%	22%	24%	25%	26%

These figures are equal to the number of people in the age group projected to live in a 'one adult' household, divided by the projected population of that age and gender (including those living in communal establishments)

Table 8d: Projected percentage of people living alone in TAYplan SDP area, by gender and age group, 2008-2033

Age group	2008	2013	2018	2023	2028	2033
Males						
16-19	3%	3%	4%	4%	5%	5%
20-24	9%	10%	10%	11%	11%	11%
25-29	20%	22%	25%	27%	28%	30%
30-34	22%	23%	26%	29%	32%	34%
35-39	21%	23%	24%	27%	30%	32%
40-44	19%	22%	24%	25%	27%	30%
45-49	20%	22%	25%	26%	27%	29%
50-54	18%	20%	22%	24%	25%	25%
55-59	18%	20%	22%	24%	25%	26%
60-64	17%	18%	19%	20%	21%	22%
65-69	19%	19%	21%	22%	23%	24%
70-74	19%	19%	19%	20%	20%	20%
75-79	22%	20%	19%	18%	18%	17%
80-84	30%	29%	28%	27%	27%	28%
85-89	44%	45%	44%	44%	45%	46%
90+	43%	41%	41%	41%	41%	42%
All ages	18%	20%	21%	23%	24%	25%
Females						
16-19	4%	5%	5%	6%	7%	7%
20-24	8%	9%	9%	10%	10%	11%
25-29	16%	18%	20%	22%	23%	25%
30-34	12%	15%	17%	19%	20%	22%
35-39	9%	10%	11%	12%	13%	14%
40-44	10%	11%	12%	14%	15%	16%
45-49	14%	15%	16%	18%	21%	22%
50-54	16%	16%	17%	18%	18%	20%
55-59	16%	16%	15%	15%	14%	14%
60-64	23%	22%	21%	20%	18%	17%
65-69	31%	30%	28%	26%	25%	23%
70-74	41%	40%	38%	35%	33%	30%
75-79	53%	51%	50%	48%	45%	42%
80-84	63%	64%	65%	65%	64%	62%
85-89	69%	71%	74%	76%	77%	78%
90+	60%	65%	68%	72%	75%	78%
All ages	22%	23%	24%	25%	26%	27%
Total						
16-19	3%	4%	5%	5%	6%	6%
20-24	9%	9%	10%	10%	11%	11%
25-29	18%	20%	22%	24%	26%	28%
30-34	17%	19%	21%	24%	26%	28%
35-39	15%	16%	18%	20%	22%	23%
40-44	15%	16%	18%	20%	21%	23%
45-49	16%	18%	20%	22%	24%	26%
50-54	17%	18%	19%	21%	21%	23%
55-59	17%	18%	18%	19%	19%	20%
60-64	20%	20%	20%	20%	20%	19%
65-69	25%	25%	25%	24%	24%	23%
70-74	31%	30%	29%	28%	27%	26%
75-79	39%	38%	36%	34%	32%	31%
80-84	51%	50%	49%	48%	47%	47%
85-89	61%	62%	62%	63%	63%	64%
90+	56%	58%	60%	61%	62%	64%
All ages	20%	21%	23%	24%	25%	26%

These figures are equal to the number of people in the age group projected to live in a 'one adult' household, divided by the projected population of that age and gender (including those living in communal establishments)

Annex A: Details of the data zones that have been used to calculate the household projections for the National Parks

Cairngorms National Park	Loch Lomond and the Trossachs National Park
S01000312	S01000785
S01000303	S01000796
S01004233	S01000800
S01000316	S01000804
S01000360	S01006081
S01003743	S01006083
S01003747	S01006150
S01003748	S01006163
S01003749	S01006168
S01003750	S01006170
S01003751	S01006171
S01003772	S01006172
S01003755	S01006173
S01003756	S01006174
S01003759	S01006175
S01003760	S01006292
S01003764	S01006293
S01003766	S01006294
S01003767	
S01003771	
S01000301	
S01003754	

Annex B: Details of the data zones that have been used to calculate the household projections for SDP areas

In [Section 1](#), there is a description of SDP boundaries. In essence SDP areas are aggregates of local authority areas, excluding the areas of the National Parks. There are several data zones in Aberdeenshire and West Dunbartonshire that overlap the two National Parks. These data zones are excluded from the SDP areas. Fife is split into two parts with the north part of Fife included in TAYplan SDP area and the south part included in SESplan SDP area. Further information can be found in [Section 4](#).

Details of these data zones are given here:

Data zones in Aberdeenshire that are also in Cairngorms National Park, and so are excluded from the projections for the Aberdeen City & Shire SDP area

S01000301
S01000303
S01000312
S01000316
S01000360

Data zones in West Dunbartonshire that are also in Loch Lomond and the Trossachs National Park, and so are excluded from the projections for the Glasgow & Clyde Valley SDP area

S01006292
S01006293
S01006294

Data zones in Fife that are part of TAYplan SDP area for the purpose of the projections

S01002851	S01002933	S01002948	S01002958	S01002968	S01002978
S01002888	S01002937	S01002949	S01002959	S01002969	S01002979
S01002902	S01002938	S01002950	S01002960	S01002970	S01002980
S01002917	S01002940	S01002951	S01002961	S01002971	S01002981
S01002918	S01002941	S01002952	S01002962	S01002972	S01002982
S01002920	S01002942	S01002953	S01002963	S01002973	S01002983
S01002921	S01002943	S01002954	S01002964	S01002974	S01002984
S01002923	S01002944	S01002955	S01002965	S01002975	S01002985
S01002924	S01002945	S01002956	S01002966	S01002976	S01002986
S01002928	S01002947	S01002957	S01002967	S01002977	S01002987

S01002988	S01002998	S01003008	S01003018
S01002989	S01002999	S01003009	S01003019
S01002990	S01003000	S01003010	S01003020
S01002991	S01003001	S01003011	S01003021
S01002992	S01003002	S01003012	S01003022
S01002993	S01003003	S01003013	S01003023
S01002994	S01003004	S01003014	S01003024
S01002995	S01003005	S01003015	
S01002996	S01003006	S01003016	
S01002997	S01003007	S01003017	

Data zones in Fife that are part of SESplan SDP area for the purpose of the projections

S01002572	S01002582	S01002592	S01002602	S01002612	S01002622	S01002632
S01002573	S01002583	S01002593	S01002603	S01002613	S01002623	S01002633
S01002574	S01002584	S01002594	S01002604	S01002614	S01002624	S01002634
S01002575	S01002585	S01002595	S01002605	S01002615	S01002625	S01002635
S01002576	S01002586	S01002596	S01002606	S01002616	S01002626	S01002636
S01002577	S01002587	S01002597	S01002607	S01002617	S01002627	S01002637
S01002578	S01002588	S01002598	S01002608	S01002618	S01002628	S01002638
S01002579	S01002589	S01002599	S01002609	S01002619	S01002629	S01002639
S01002580	S01002590	S01002600	S01002610	S01002620	S01002630	S01002640
S01002581	S01002591	S01002601	S01002611	S01002621	S01002631	S01002641
S01002642	S01002652	S01002662	S01002672	S01002682	S01002692	S01002702
S01002643	S01002653	S01002663	S01002673	S01002683	S01002693	S01002703
S01002644	S01002654	S01002664	S01002674	S01002684	S01002694	S01002704
S01002645	S01002655	S01002665	S01002675	S01002685	S01002695	S01002705
S01002646	S01002656	S01002666	S01002676	S01002686	S01002696	S01002706
S01002647	S01002657	S01002667	S01002677	S01002687	S01002697	S01002707
S01002648	S01002658	S01002668	S01002678	S01002688	S01002698	S01002708
S01002649	S01002659	S01002669	S01002679	S01002689	S01002699	S01002709
S01002650	S01002660	S01002670	S01002680	S01002690	S01002700	S01002710
S01002651	S01002661	S01002671	S01002681	S01002691	S01002701	S01002711
S01002712	S01002722	S01002732	S01002742	S01002752	S01002762	S01002772
S01002713	S01002723	S01002733	S01002743	S01002753	S01002763	S01002773
S01002714	S01002724	S01002734	S01002744	S01002754	S01002764	S01002774
S01002715	S01002725	S01002735	S01002745	S01002755	S01002765	S01002775
S01002716	S01002726	S01002736	S01002746	S01002756	S01002766	S01002776
S01002717	S01002727	S01002737	S01002747	S01002757	S01002767	S01002777
S01002718	S01002728	S01002738	S01002748	S01002758	S01002768	S01002778
S01002719	S01002729	S01002739	S01002749	S01002759	S01002769	S01002779
S01002720	S01002730	S01002740	S01002750	S01002760	S01002770	S01002780
S01002721	S01002731	S01002741	S01002751	S01002761	S01002771	S01002781
S01002782	S01002792	S01002802	S01002812	S01002822	S01002832	S01002842
S01002783	S01002793	S01002803	S01002813	S01002823	S01002833	S01002843
S01002784	S01002794	S01002804	S01002814	S01002824	S01002834	S01002844
S01002785	S01002795	S01002805	S01002815	S01002825	S01002835	S01002845
S01002786	S01002796	S01002806	S01002816	S01002826	S01002836	S01002846
S01002787	S01002797	S01002807	S01002817	S01002827	S01002837	S01002847
S01002788	S01002798	S01002808	S01002818	S01002828	S01002838	S01002848
S01002789	S01002799	S01002809	S01002819	S01002829	S01002839	S01002849
S01002790	S01002800	S01002810	S01002820	S01002830	S01002840	S01002850
S01002791	S01002801	S01002811	S01002821	S01002831	S01002841	S01002852
S01002853	S01002863	S01002873	S01002883	S01002894	S01002905	S01002915
S01002854	S01002864	S01002874	S01002884	S01002895	S01002906	S01002916
S01002855	S01002865	S01002875	S01002885	S01002896	S01002907	S01002919
S01002856	S01002866	S01002876	S01002886	S01002897	S01002908	S01002922
S01002857	S01002867	S01002877	S01002887	S01002898	S01002909	S01002925
S01002858	S01002868	S01002878	S01002889	S01002899	S01002910	S01002926
S01002859	S01002869	S01002879	S01002890	S01002900	S01002911	S01002927
S01002860	S01002870	S01002880	S01002891	S01002901	S01002912	S01002929
S01002861	S01002871	S01002881	S01002892	S01002903	S01002913	S01002930
S01002862	S01002872	S01002882	S01002893	S01002904	S01002914	S01002931
S01002932	S01002939					
S01002934	S01002946					
S01002935						
S01002936						

7. Notes on statistical publications

Enquiries

Enquiries about this publication should be addressed to:

Statistics Customer Services,
General Register Office for Scotland,
Ladywell House,
Edinburgh,
EH12 7TF.

Telephone: (0131) 314 4299

E-mail: customer@gro-scotland.gsi.gov.uk

General Register Office for Scotland

The General Register Office for Scotland (GROS) is the department of the devolved Scottish Administration responsible for the registration of births, marriages, civil partnerships, deaths, divorces and adoptions in Scotland. We are responsible for the Census of Population in Scotland which we use, with other sources of information, to produce population and household statistics. We make available important information for family history. The GROS website is <http://www.gro-scotland.gov.uk>.

Our aim is to provide relevant and reliable information, analysis and advice that meet the needs of government, business and the people of Scotland.

Further detailed statistics produced by GROS are available from the Statistics Section on the GROS website (<http://www.gro-scotland.gov.uk/statistics/index.html>). Statistics from the 2001 Census are on Scotland's Census Results On-Line website (<http://www.scrol.gov.uk>) and on the Census section of the GROS website (<http://www.gro-scotland.gov.uk/census/index.html>).

Information about future publications is provided on the GROS website (<http://www.gro-scotland.gov.uk/futurepb.html>). If you would like to receive notification of forthcoming statistical publications, you can register your interest on the Scottish Government ScotStat website at <http://www.scotland.gov.uk/scotstat>.

Comments and complaints

If you are not satisfied with our service, please write to Kirsty MacLachlan, Head of Demography Division, General Register Office for Scotland, Room 1/2/7, Ladywell House, Ladywell Road, Edinburgh EH12 7TF. Telephone: (0131) 314 4242, E-mail: kirsty.maclachlan@gro-scotland.gsi.gov.uk.

We also welcome any comments or suggestion that would help us to improve our standards of service.

Related organisations

Organisation	Contact
<p>The Scottish Government (SG) forms the bulk of the devolved Scottish Administration. The aim of the statistical service in the SG is to provide relevant and reliable statistical information, analysis and advice that meets the needs of government, business and the people of Scotland.</p>	<p>Office of the Chief Statistician, Scottish Government, 1.N04, St Andrew's House, Edinburgh, EH1 3DG.</p> <p>Telephone: (0131) 244 0442</p> <p>E-mail: statistics.enquiries@scotland.gsi.gov.uk</p> <p>Website: http://www.scotland.gov.uk/Statistics</p>
<p>The Office for National Statistics (ONS) is responsible for producing a wide range of economic and social statistics. It also holds the Census of Population for England and Wales.</p>	<p>Customer Contact Centre, Room 1.015, Office for National Statistics, Cardiff Road, Newport, NP10 8XG.</p> <p>Telephone: 0845 601 3034</p> <p>Minicom: 01633 812399 E-mail: info@statistics.gsi.gov.uk Website: http://www.ons.gov.uk</p>
<p>The Northern Ireland Statistics and Research Agency (NISRA) is Northern Ireland's official statistics organisation. The Agency also has responsibility, in Northern Ireland, for the registration of births, marriages, adoptions and deaths and the Census of Population.</p>	<p>Northern Ireland Statistics and Research Agency, McAuley House, 2-14 Castle Street, Belfast, BT1 1SA.</p> <p>Telephone: 028 9034 8100 Website: http://www.nisra.gov.uk</p>

© Crown Copyright. Brief extracts from the Crown Copyright material in this publication may be reproduced provided the source is fully acknowledged.