

Site 056 Site Blair Atholl H28
 Size -

Proposals Housing

Ecology sensitivity

Green– see survey

General Landscape

New edge to settlement

Landscape

Green– see survey

Risk of Flooding

Red

Other considerations

Amber

Relationship to existing settlement

Green

Immediate site access


Amber

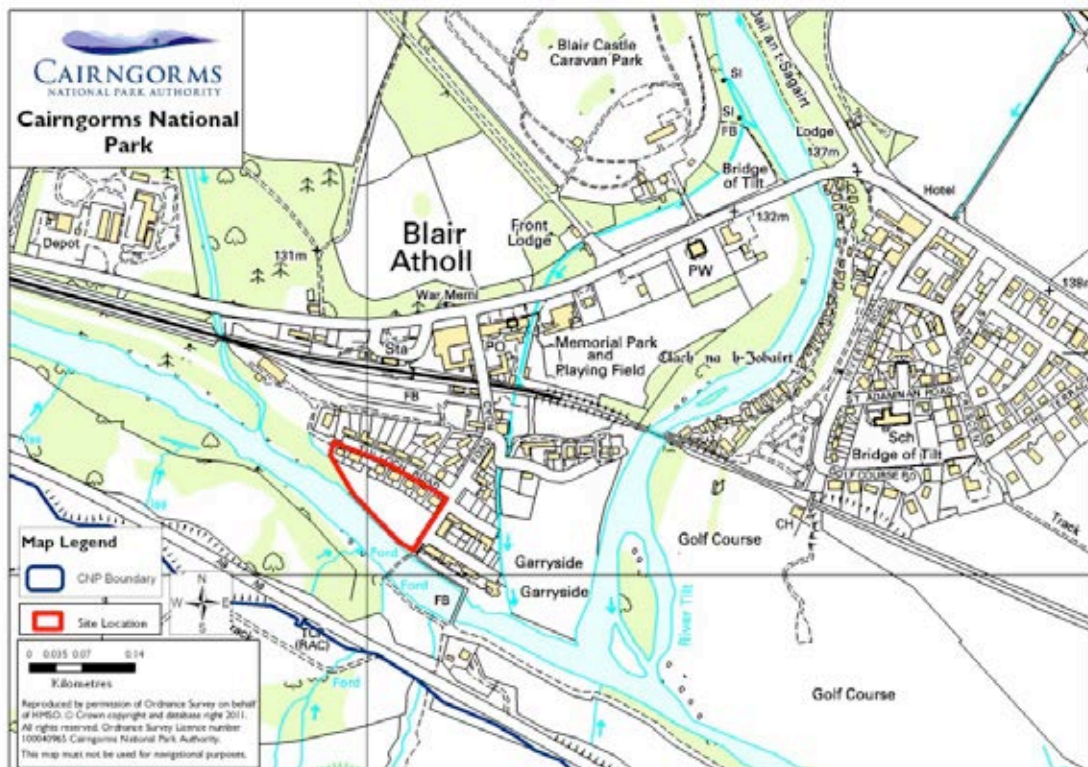
Accessibility to local transport

Green

Access to services and facilities

Green

Issues	Flooding	
Overall Rating	Red	



Site 057

Site Blair Atholl I7

Size -

Proposals Industrial

Ecology sensitivity

Green— see survey

General Landscape

Former goods yard

Landscape

Green— see survey

Risk of Flooding

Green

Other considerations

Green¹⁷

Relationship to existing settlement

Green

Immediate site access

Green

Accessibility to local transport

Green

Access to services and facilities

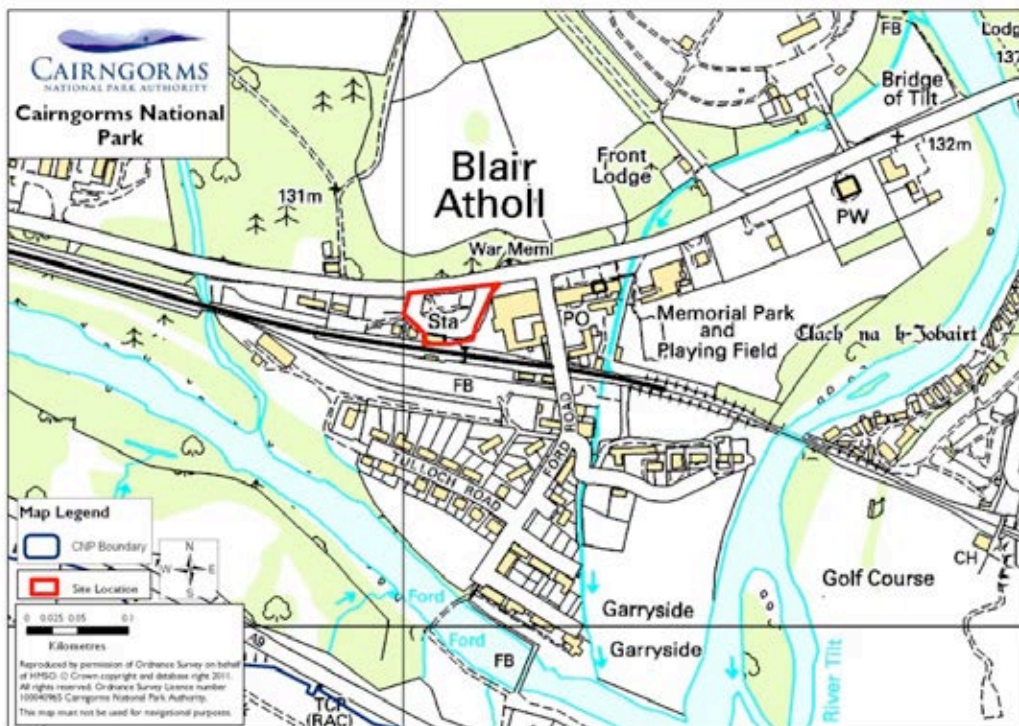
Green

Issues

None

Overall Rating

Green



¹⁷ PKC Housing Land Audit 2010 – H27 – effective – 5 effective

Site 058a **Site An Camas Mor**
Size 105ha

Proposals Mixed use new community

Ecology sensitivity
 Amber– see application Env. Statement

General Landscape
 Moor/woodland site in NSA by River Spey

Landscape
 Amber– see survey

Risk of Flooding Amber

Other considerations Amber¹⁸

Relationship to existing settlement Amber

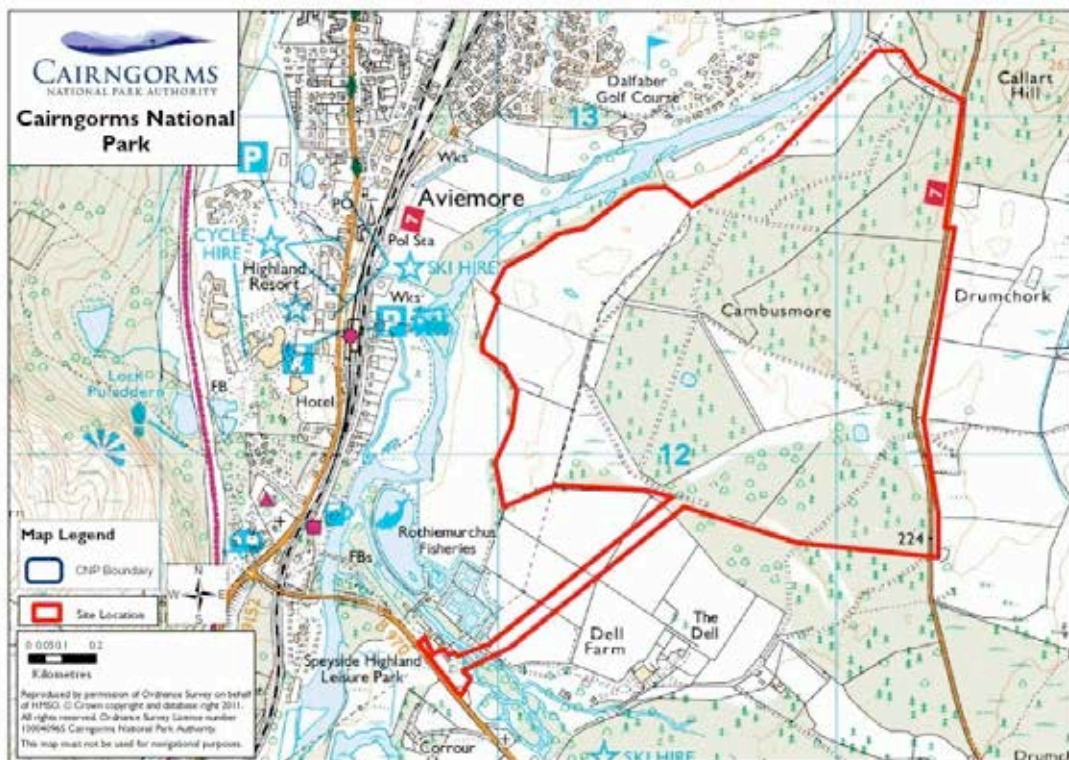
Immediate site access Amber

Accessibility to local transport Amber

Access to services and facilities Amber

Issues Landscape, ecology, flood risk – addressed through existing planning application

Overall Rating Amber



¹⁸ Highland Council Housing Land Audit 2010 - An Camas Mor – 95 units effective

Site 058b **Site Lairig Ghru car park**
Size -

Proposals Leisure/Tourism

Ecology sensitivity

Red – see survey

General Landscape

Woodland

Landscape

Amber – see survey

Risk of Flooding

Green

Other considerations

Amber

Relationship to existing settlement

Red

Immediate site access

Amber

Accessibility to local transport

Amber

Access to services and facilities

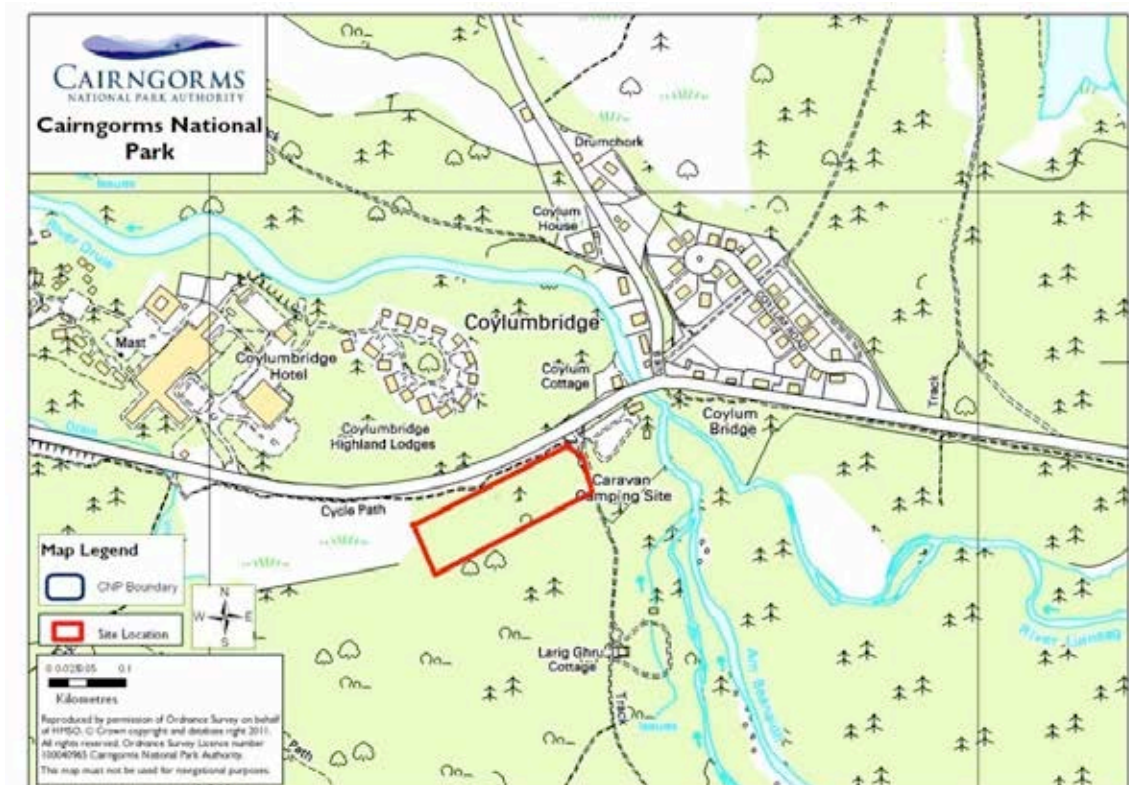
Amber

Issues

Ecology, settlement relationship

Overall Rating

Red



Site 058c **Site Borrow Pit, Inverdrue**
Size 2.5ha

Proposals Housing/Affordable

Ecology sensitivity
 Amber – see survey

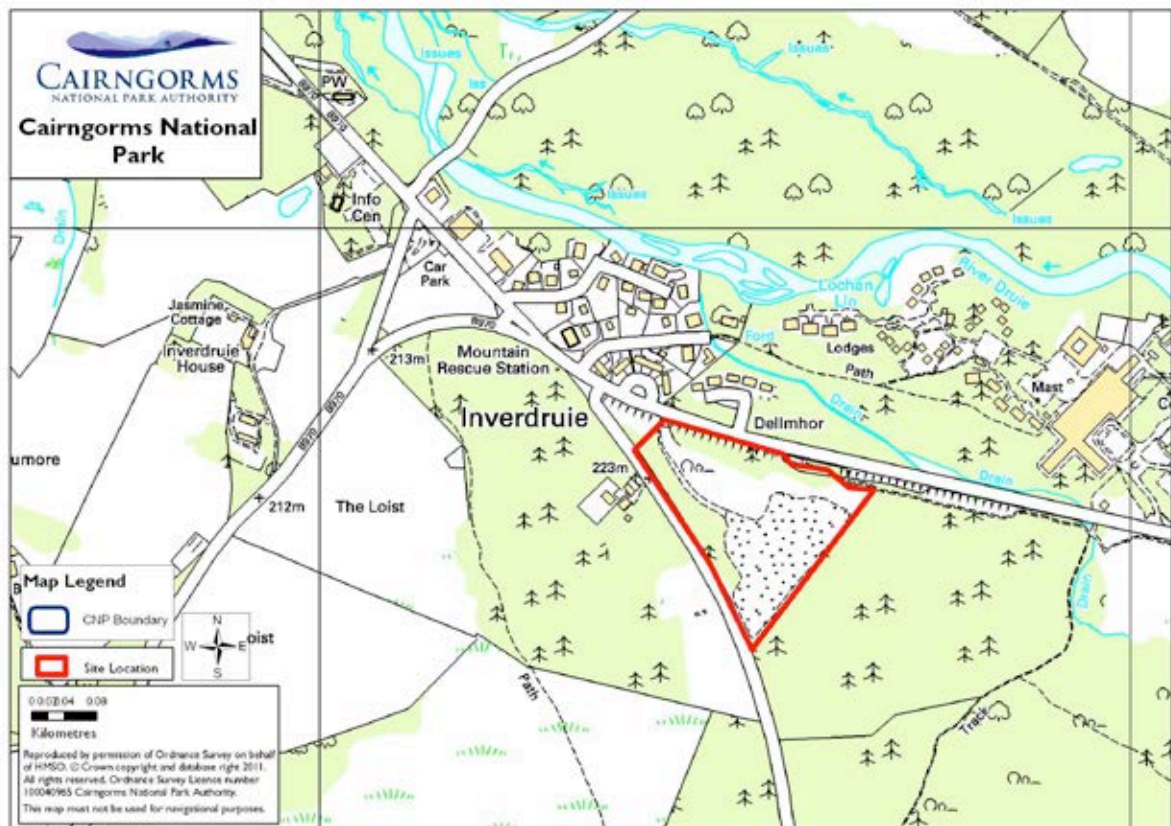
General Landscape
 Borrow pit

Landscape
 Red – see survey

Risk of Flooding Green
Other considerations Amber
Relationship to existing settlement Red

Immediate site access Amber
Accessibility to local transport Amber
Access to services and facilities Amber

Issues	Landscape, settlement relationship	
Overall Rating	Red	



Site 058d **Site Gate House to An Camas Mor**
Size -

Proposal – Housing – Single House

Ecology sensitivity

-

General Landscape

- -

Landscape

Risk of Flooding

-

Other considerations

-

Relationship to existing settlement

-

Immediate site access

-

Accessibility to local transport

-

Access to services and facilities

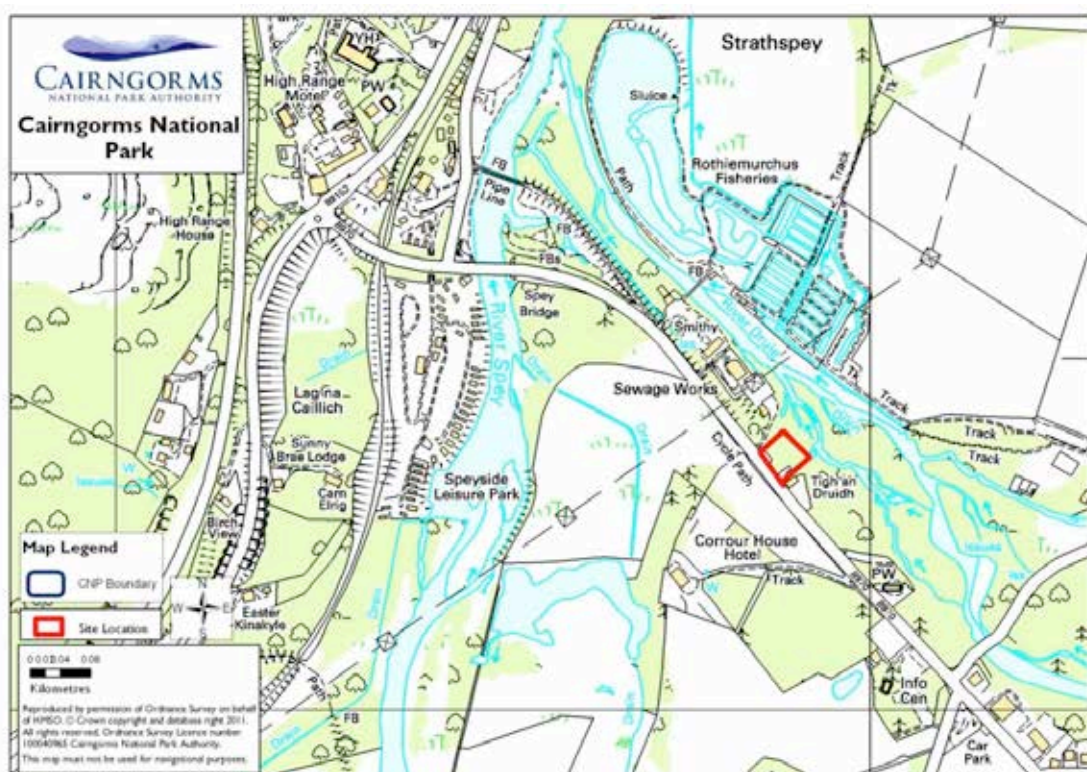
-

Issues

-

Overall Rating

Single house only – see Table 2



Site 058e **Site Inverdrue junction**
Size 0.5ha

Ecology sensitivity

Amber – see survey

General Landscape

Open site, mature trees

Landscape

Red – see survey

Risk of Flooding

Green

Other considerations

Amber

Relationship to existing settlement

Red

Immediate site access

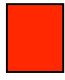
Green

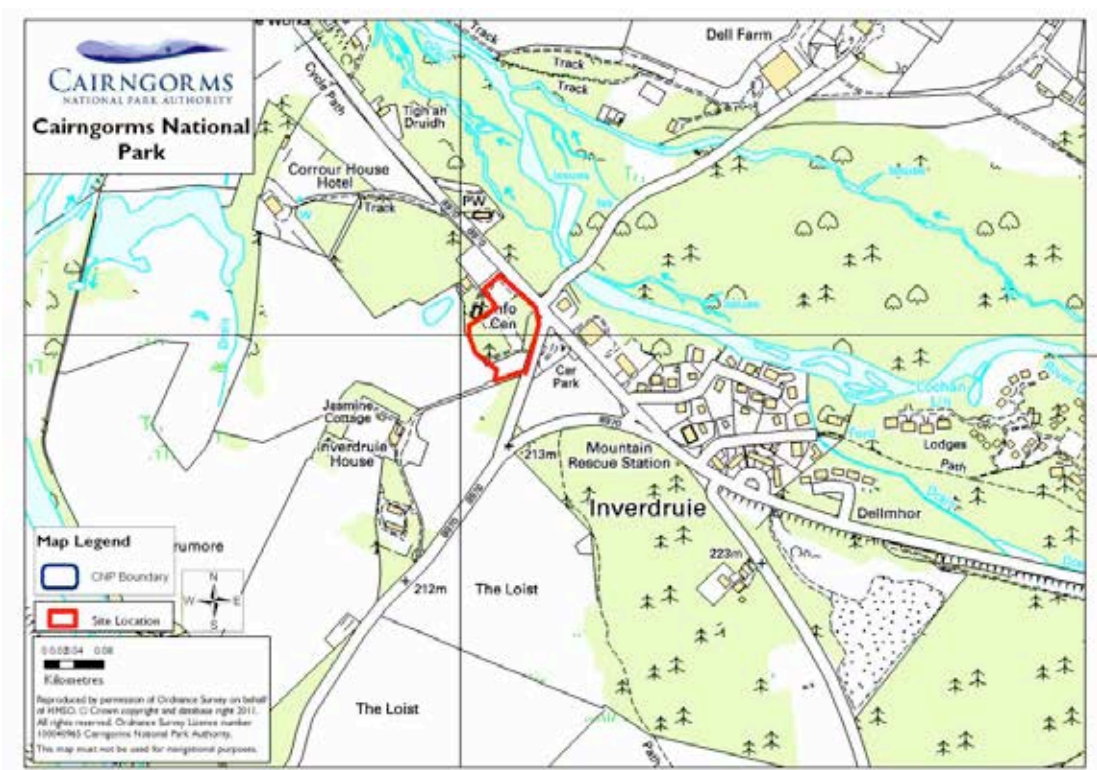
Accessibility to local transport

Amber

Access to services and facilities

Amber

Issues	Landscape, settlement relationship	
Overall Rating	Red	



Site 060 **Site Tomintoul H1**
Size -

Proposal – Housing – existing allocation

Ecology sensitivity

Green – walkover survey only

General Landscape

Edge settlement

Landscape

Green – see survey

Risk of Flooding

Green

Other considerations

Green¹⁹

Relationship to existing settlement

Green

Immediate site access

Green

Accessibility to local transport

Amber

Access to services and facilities

Green

Issues	access	
Overall Rating	Green	



¹⁹ Moray Council Housing Land Audit 2010 – 10 units effective H2,H3,H4

Site 061 **Site Tomintoul H2**
Size -

Proposal – Housing – existing allocation

Ecology sensitivity

Green – walkover survey only

General Landscape

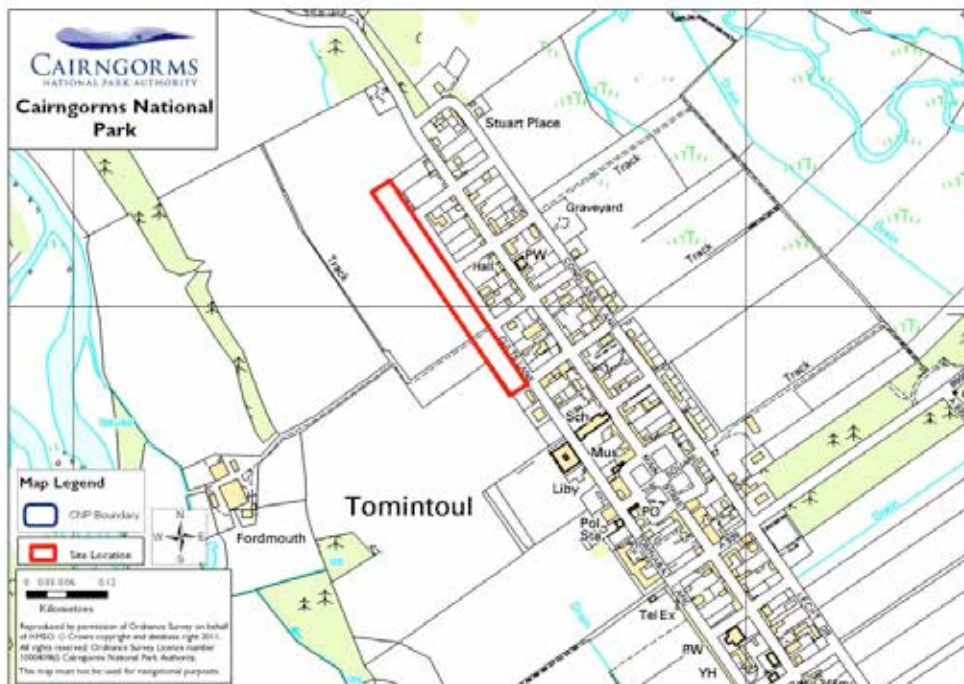
Edge settlement

Landscape

Green – see survey

Risk of Flooding Green
Other considerations Green²⁰
Relationship to existing settlement Green
Immediate site access Green
Accessibility to local transport Amber
Access to services and facilities Green

Issues	Access	
Overall Rating	Green	



²⁰ Moray Council Housing Land Audit 2010 – 10 units effective H2,H3,H4

Site 062 **Site Tomintoul H3**
Size -

Proposal – Housing – existing allocation

Ecology sensitivity

Green – walkover survey only


General Landscape

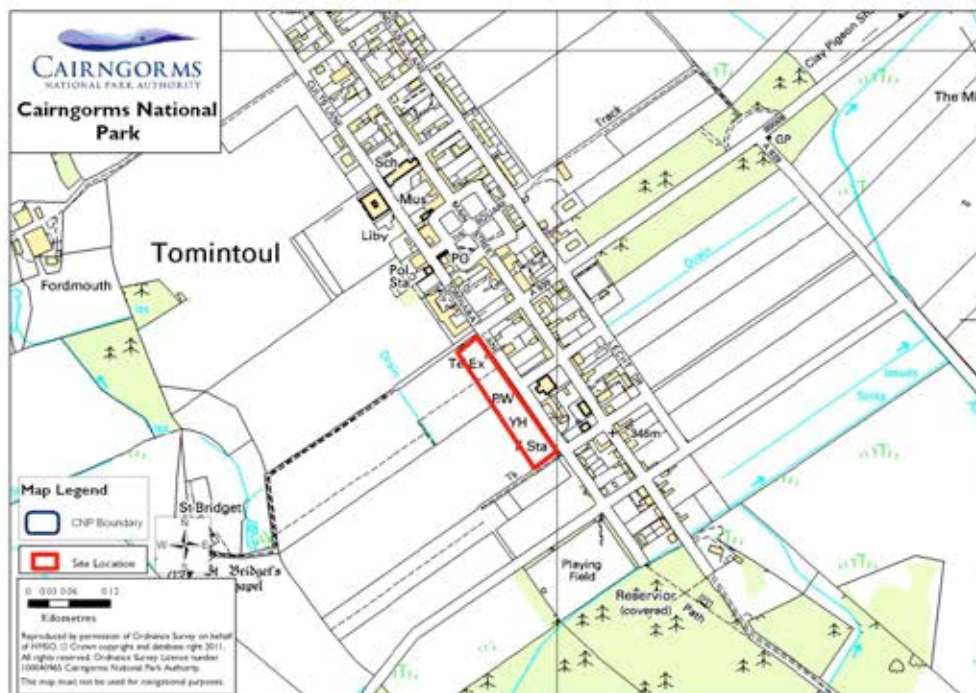
Edge settlement

Landscape

Green – see survey

Risk of Flooding	Green
Other considerations	Green ²¹
Relationship to existing settlement	Green
Immediate site access	Green
Accessibility to local transport	Amber
Access to services and facilities	Green

Issues	Access	
Overall Rating	Green	



²¹ Moray Council Housing Land Audit 2010 – 10 units effective H2,H3,H4

Site 063 **Site Tomintoul H4**
Size -

Proposal – Housing – existing allocation

Ecology sensitivity

Green – walkover survey only

General Landscape

Edge settlement

Landscape

Green – see survey

Risk of Flooding

Green

Other considerations

Green²²

Relationship to existing settlement

Green

Immediate site access


Green

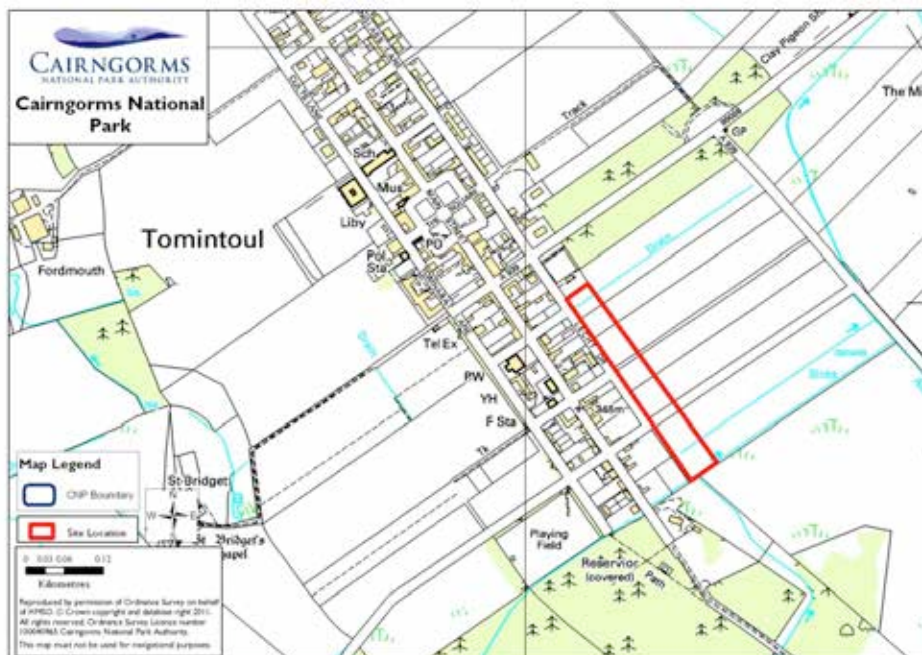
Accessibility to local transport

Amber

Access to services and facilities

Green

Issues	Access	
Overall Rating	Green	



²² Moray Council Housing Land Audit 2010 – 10 units effective H2,H3,H4

Site 064 **Site Lettoch Ochilmore, Killiecrankie**
Size 42.3ha

Proposal -

Ecology sensitivity

Green– see survey

General Landscape

Outside any settlement, battlefield

Landscape

Red – see survey

Risk of Flooding

Green

Other considerations

Amber

Relationship to existing settlement

Red

Immediate site access

Amber

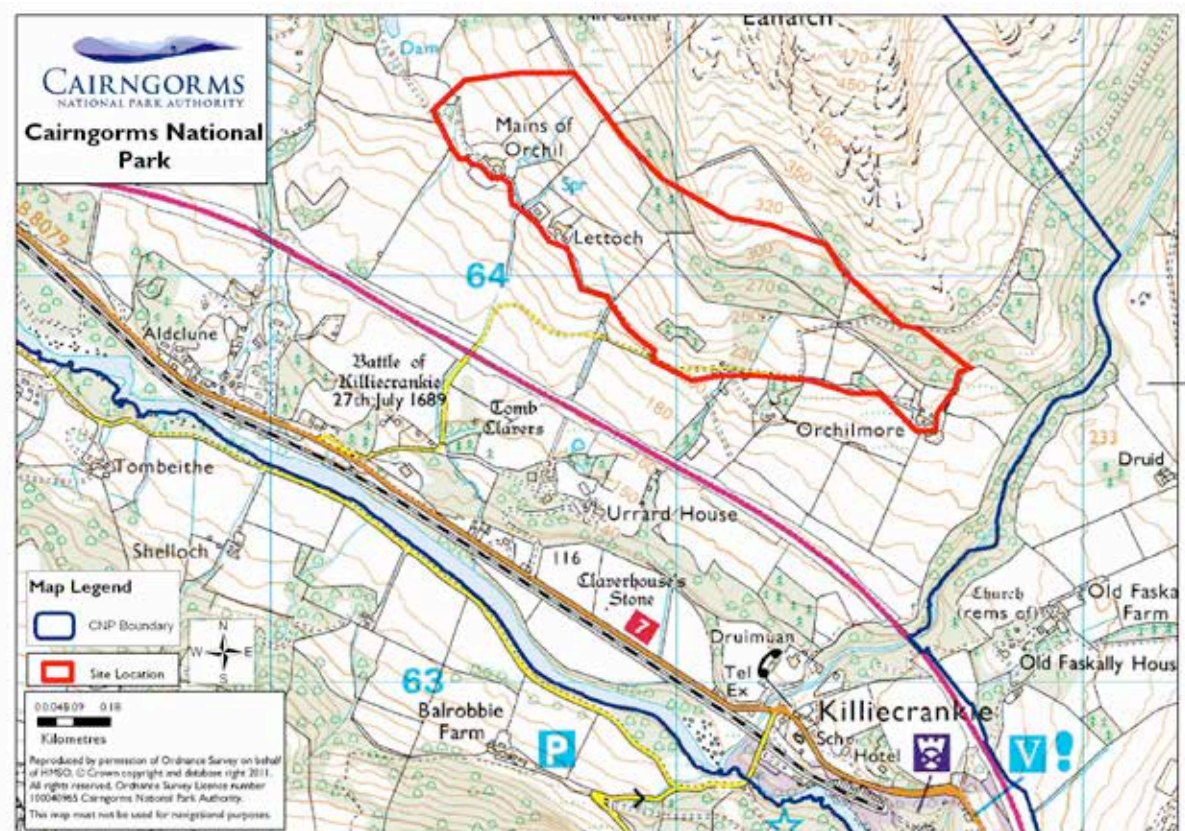
Accessibility to local transport

Amber

Access to services and facilities

Red

Issues	Landscape, settlement relationship, services	
Overall Rating	Red	



Site 065a

Site Boat of Garten Bonfire Site

Size 1.0ha

(please note survey information on this site is referenced 0121)

Proposals Housing/Affordable

Ecology sensitivity

Amber – walk over survey

General Landscape

Key approach, well-related

Landscape

Amber – see survey

Risk of Flooding

Green

Other considerations

Amber

Relationship to existing settlement

Green

Immediate site access

Green

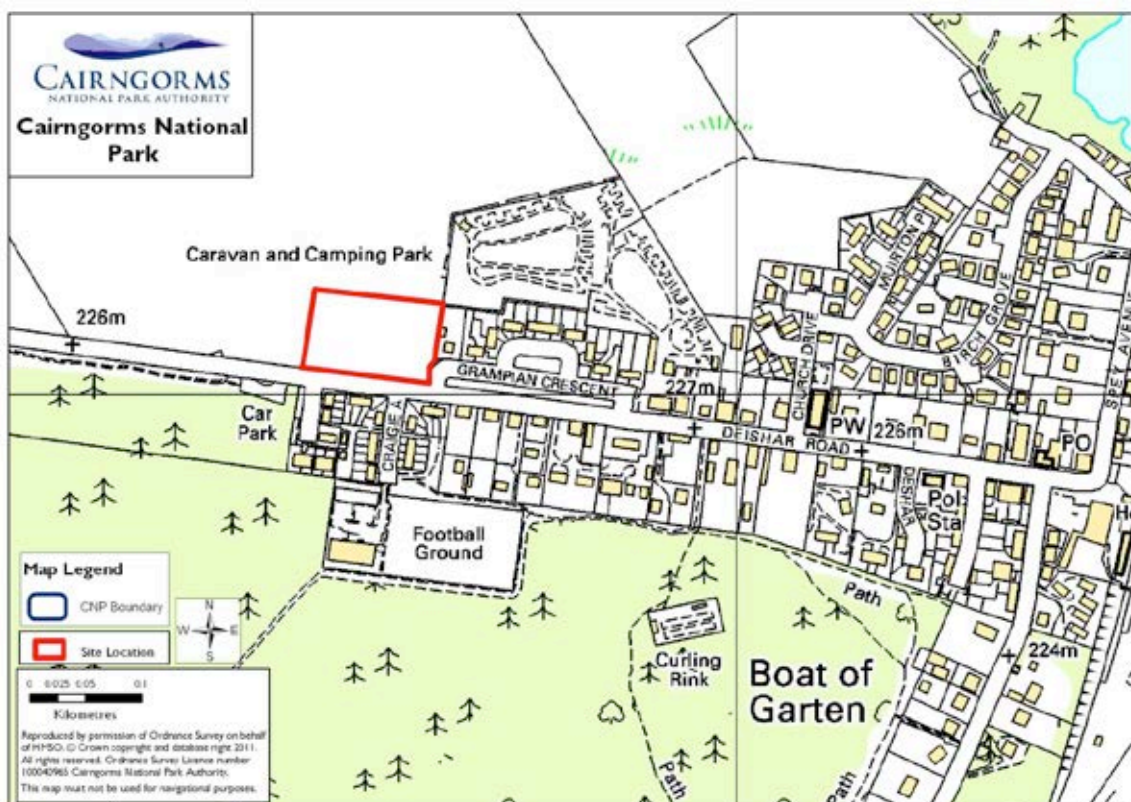
Accessibility to local transport

Amber

Access to services and facilities

Green

Issues	Ecology, landscape	
Overall Rating	Amber	



Site 065b **Site Former Village Hall, Boat of Garten**
Size 0.1ha
(please note survey information on this site is referenced 012m)
Proposals Housing/Affordable

Ecology sensitivity
 Amber – walk over survey

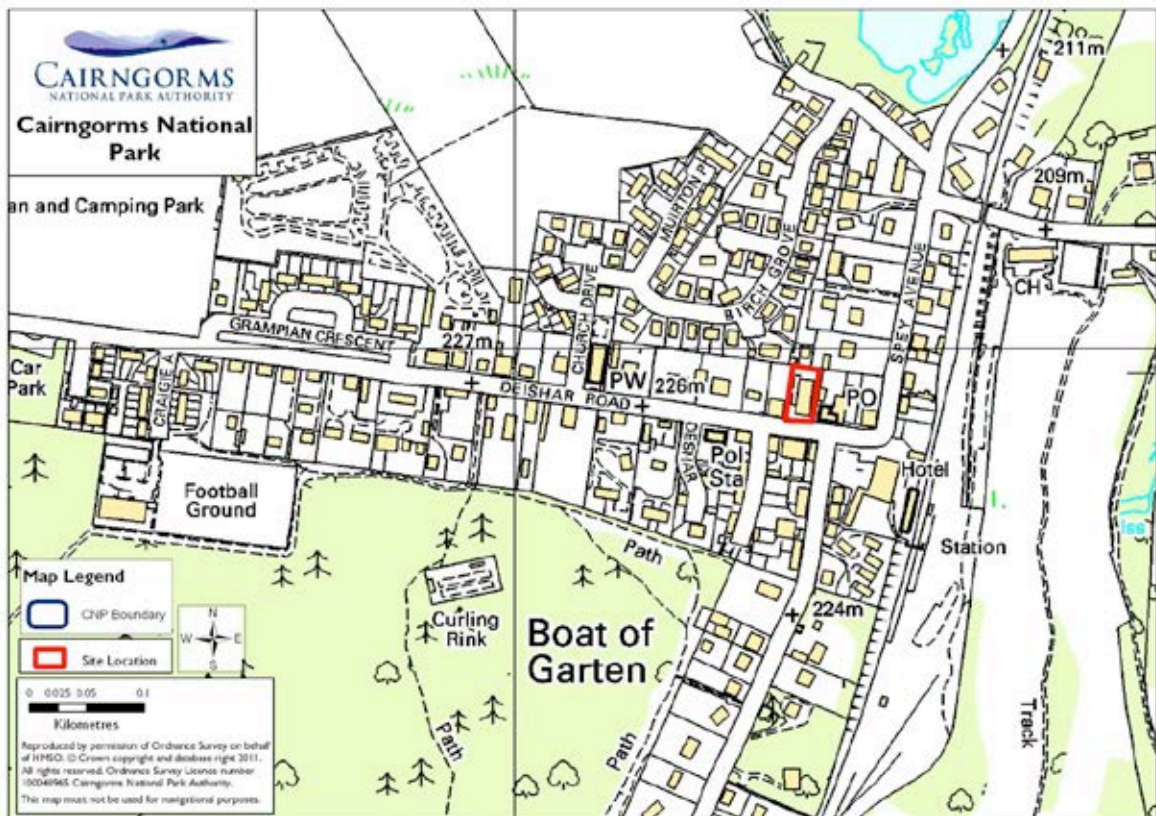
General Landscape
 Former village hall

Landscape
 Green – see survey

Risk of Flooding Green
Other considerations Green
Relationship to existing settlement Green

Immediate site access Green
Accessibility to local transport Amber
Access to services and facilities Green

Issues	Ecology, access	
Overall Rating	Green	



Site 065c

Site Rear of Birch Grove, Boat of Garten

Size 2.2ha

Proposals Housing/Affordable

(please note survey information on this site is referenced 012n)

Ecology sensitivity

Amber – walk over survey

General Landscape

Open grassland, well related

Landscape

Amber – see survey

Risk of Flooding

Green

Other considerations

Green

Relationship to existing settlement

Green

Immediate site access

Amber

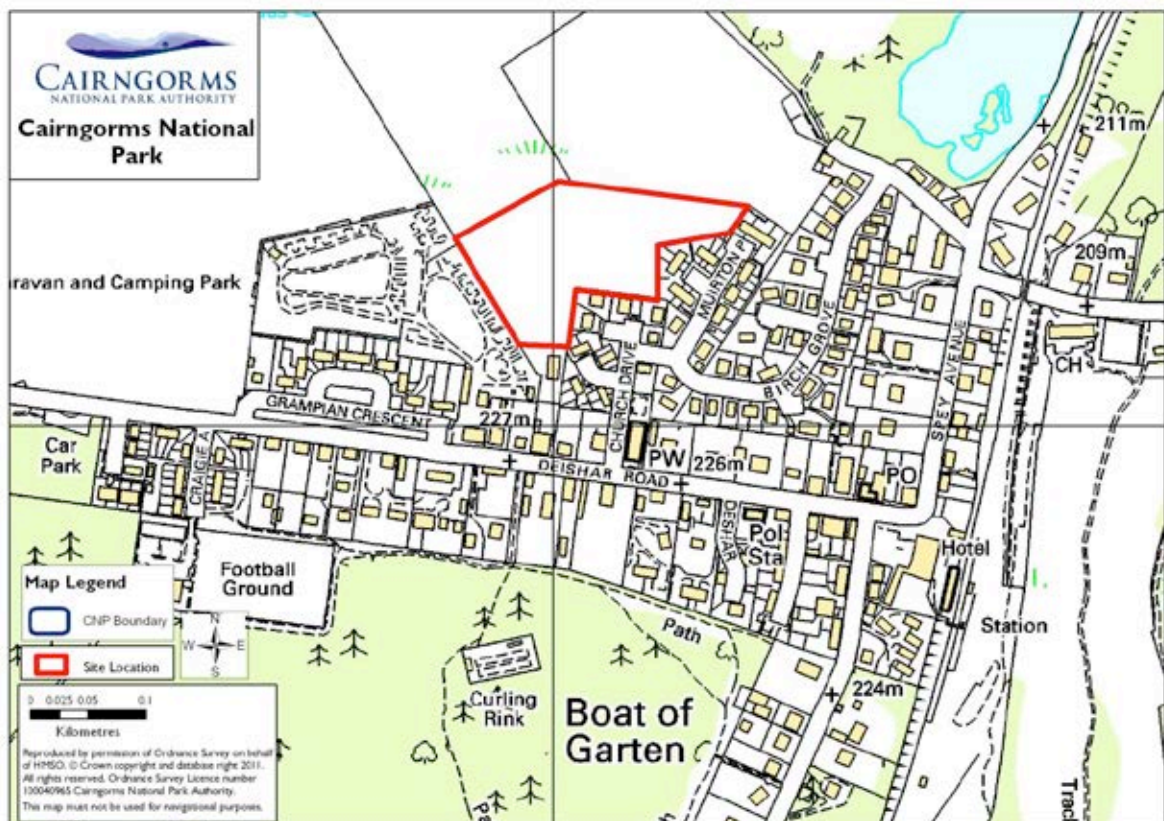
Accessibility to local transport

Amber

Access to services and facilities

Green

Issues	Access, landscape, ecology	
Overall Rating	Amber	



Site 065d **Site Adjacent to football pitch, Boat of Garten**

Size 0.1ha

(please note survey information on this site is referenced 012o)

Proposals Housing/Affordable

Ecology sensitivity

No survey – See Table 3

General Landscape

Open Space

Landscape

Amber – see survey

Risk of Flooding

Green

Other considerations

Amber

Relationship to existing settlement

Amber

Immediate site access

Red

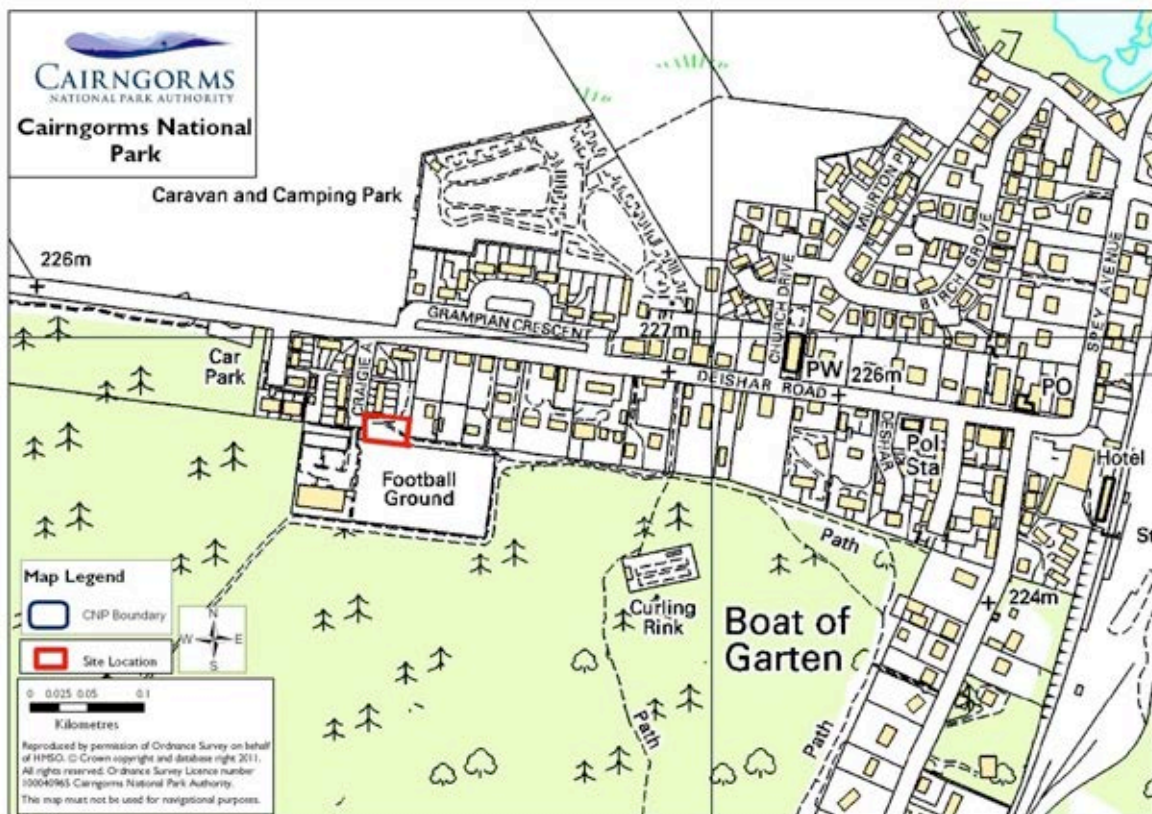
Accessibility to local transport

Amber

Access to services and facilities

Green

Issues	Access
Overall Rating	Red 



Site 065e **Site Area** next to Craige Road, Boat of Garten
Size 0.1ha
 (please note survey information on this site is referenced 012p)
Proposals Housing/Affordable

Ecology sensitivity
 Amber – see survey 012j

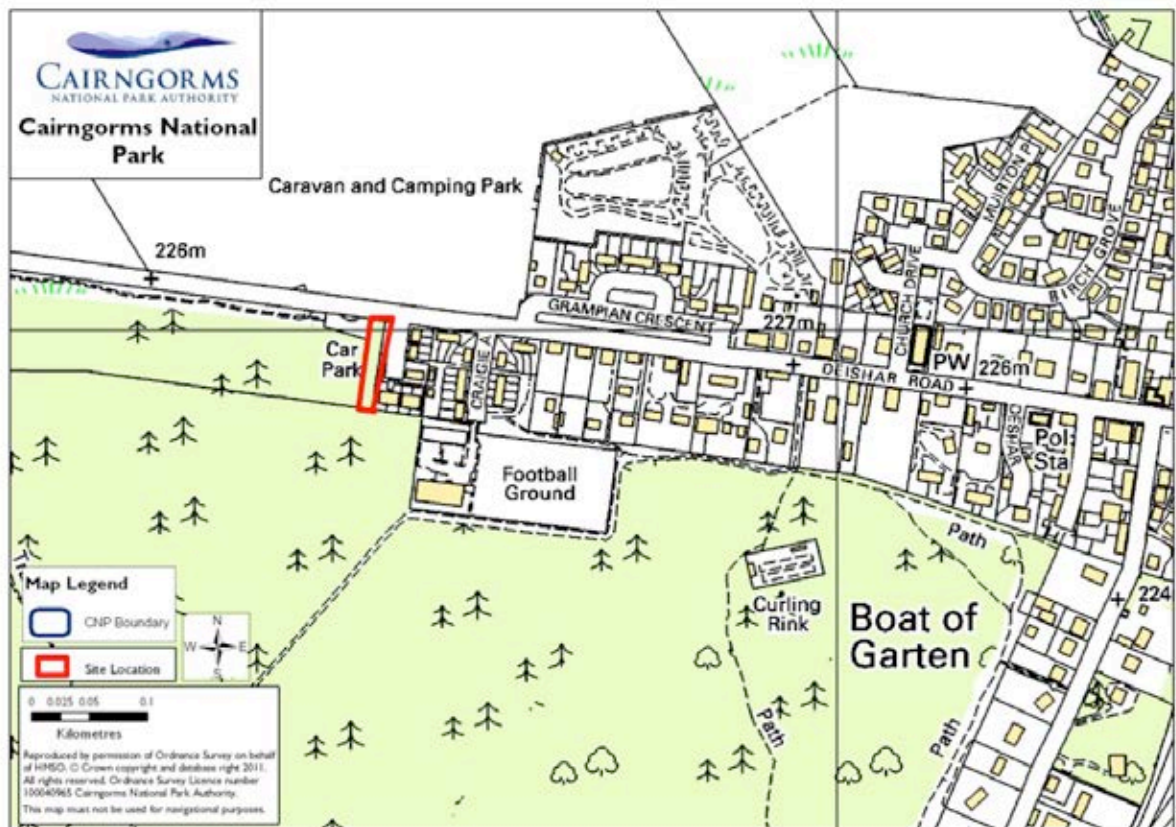
General Landscape
 Woodland, well-related

Landscape
 Amber – see survey

Risk of Flooding Green
Other considerations Amber
Relationship to existing settlement Green

Immediate site access Green
Accessibility to local transport Amber
Access to services and facilities Green

Issues	Ecology, landscape	
Overall Rating	Amber	



Appendices

Appendix 1 Habitat Surveys

Appendix 2 Landscape Surveys