



General Register Office
for
SCOTLAND
information about Scotland's people

**Population Projections for Scotland's Strategic
Development Plan Areas and National Parks
(2008-based)**

Published on 10 June 2010

Contents

1	Introduction	5
2	National Parks.....	9
3	Strategic Development Plan areas.....	15
4	Boundaries.....	21
5	Notes on the population projections.....	29
6	Related publications.....	31
7	Notes on statistical publications.....	48

List of Tables

Table 1: Estimated and projected total population of the National Parks, 2001- 2033	32
Table 2a: Projected population of Cairngorms National Park, by age group and age structure, 2008-2033	33
Table 2b: Projected population of Loch Lomond and the Trossachs National Park, by age group and age structure, 2008-2033	33
Table 3a: Projected population of Cairngorms National Park, by sex and age, 2008-2033	34
Table 3b: Projected population of Loch Lomond and the Trossachs National Park, by sex and age, 2008-2033.....	35
Table 4a: Projected components of population change for Cairngorms National Park, 2008-2033.....	36
Table 4b: Projected components of population change for Loch Lomond and the Trossachs National Park, 2008-2033	36
Table 5: Estimated and projected total population of SDP areas, 2001-2033.....	37
Table 6a: Projected population of Glasgow & Clyde Valley SDP area, by age group and age structure, 2008-2033	38
Table 6b: Projected population of Aberdeen City & Shire SDP area, by age group and age structure, 2008-2033	38
Table 6c: Projected population of SESplan SDP area, by age group and age structure, 2008-2033	39
Table 6d: Projected population of TAYplan SDP area, by age group and age structure, 2008-2033	39
Table 7a: Projected population of Glasgow & Clyde Valley SDP area, by sex and age, 2008-2033	40
Table 7b: Projected population of Aberdeen City & Shire SDP area, by sex and age, 2008-2033	41
Table 7c: Projected population of SESplan SDP area, by sex and age, 2008-2033	42
Table 7d: Projected population of TAYplan SDP area, by sex and age, 2008-2033	43
Table 8a: Projected components of population change for Glasgow & Clyde Valley SDP area, 2008-2033	44
Table 8b: Projected components of population change for Aberdeen City & Shire SDP area, 2008-2033.....	44
Table 8c: Projected components of population change for SESplan SDP area, 2008-2033	44
Table 8d: Projected components of population change for TAYplan SDP area, 2008-2033	44

Annex A: Details of the data zones that have been used to calculate the projected populations of the National Parks45

Annex B: Details of the data zones that have been used to calculate the projected populations of the SDP areas46

List of Figures

Figure 1: Estimated and projected population of CNP and LLTNP, 2001-2033	10
Figure 2: Projected percentage change in population, by age group, CNP, 2008-2033	11
Figure 3: Estimated and projected population, by age and sex in CNP, 2008 and 2033.....	11
Figure 4: Projected percentage change in population, by age group, LLTNP, 2008- 2033	12
Figure 5: Estimated and projected population, by age and sex in LLTNP, 2008 and 2033	13
Figure 6: Estimated and projected population of SDP areas, 2001-2033.....	16
Figure 7: Estimated and projected population, by age and sex in SDP areas, 2008 and 2033	18
Figure 8: Projected percentage change in population, by age group, in SDP areas, 2008-2033	19

List of Maps

Map 1: Map of Scotland showing the locations of CNP and LLTNP.....	7
Map 2: Map of Scotland showing locations of SDP areas.....	8
Map 3: Data zones in Cairngorms National Park and Angus council area.....	22
Map 4: The boundaries of CNP and the constituent local authorities.....	23
Map 5: The boundaries of LLTNP and the constituent local authorities	24
Map 6: The location of Glasgow & Clyde Valley SDP area and the constituent local authorities.....	25
Map 7: The location of Aberdeen City & Shire SDP area and the constituent local authorities.....	26
Map 8: The location of SESplan SDP area and the constituent local authorities	27
Map 9: The location of TAYplan SDP area and the constituent local authorities	28

1 Introduction

- 1.1 This report gives the General Register Office for Scotland's forward projection of the population in Scotland's National Parks and Strategic Development Plan (SDP) areas. The forward projections are given up to the year 2033, based on the estimated population of these areas in mid-2008. The projections are trend-based and do not, for example, take account of future policy.
- 1.2 National Parks are protected areas of beautiful countryside, wildlife and cultural heritage. There are two National Parks in Scotland: Loch Lomond and the Trossachs National Park (LLTNP), and Cairngorms National Park (CNP). The locations of the National Parks are shown on [Map 1](#). Each National Park is managed by a National Park Authority.
- 1.3 Table A gives information on the population of the National Parks. These populations are quite small – and forward projections for such small populations are less reliable, especially for the distant future, than those for larger communities.

Table A: Total populations in the National Parks in 2008

	Population	Percentage of Scotland's Population
CNP	16,430	0.3%
LLTNP	14,590	0.3%
Rest of Scotland	5,137,480	99.4%
Scotland	5,168,500	100.0%

All population figures are rounded to the nearest 10.

- 1.4 SDP areas ([Map 2](#)) cover the regions around Aberdeen, Dundee, Edinburgh and Glasgow. Three quarters of the population of Scotland live in these areas. SDP areas were created in November 2008 to help with strategic development planning. They comprise:

Glasgow and the Clyde Valley Strategic Development Plan Area (Glasgow & Clyde Valley SDP area)

East Dunbartonshire, East Renfrewshire, Glasgow City, Inverclyde, North Lanarkshire, Renfrewshire, South Lanarkshire and West Dunbartonshire council areas (except the part of West Dunbartonshire that forms part of Loch Lomond and the Trossachs National Park).

Aberdeen City and Shire Strategic Development Plan Area (Aberdeen City & Shire SDP area)

Aberdeen City and Aberdeenshire council areas (except the part of Aberdeenshire that forms part of Cairngorms National Park).

Edinburgh and South East Scotland Strategic Development Plan Area (SESplan SDP area)

City of Edinburgh, East Lothian, Midlothian, Scottish Borders, West Lothian and Fife (Kirkcaldy, Mid-Fife and Dunfermline local planning areas only) council areas.

Dundee, Perth, Angus and North Fife Strategic Development Plan Area (TAYplan SDP area)

Angus (except the part of Angus that forms part of Cairngorms National Park), Dundee City, Perth & Kinross (except the part of Perth & Kinross that forms part of Loch Lomond & the Trossachs National Park) and Fife (St Andrews and North Fife local planning areas only) council areas.

- 1.5 Table B gives information on the population in SDP areas.

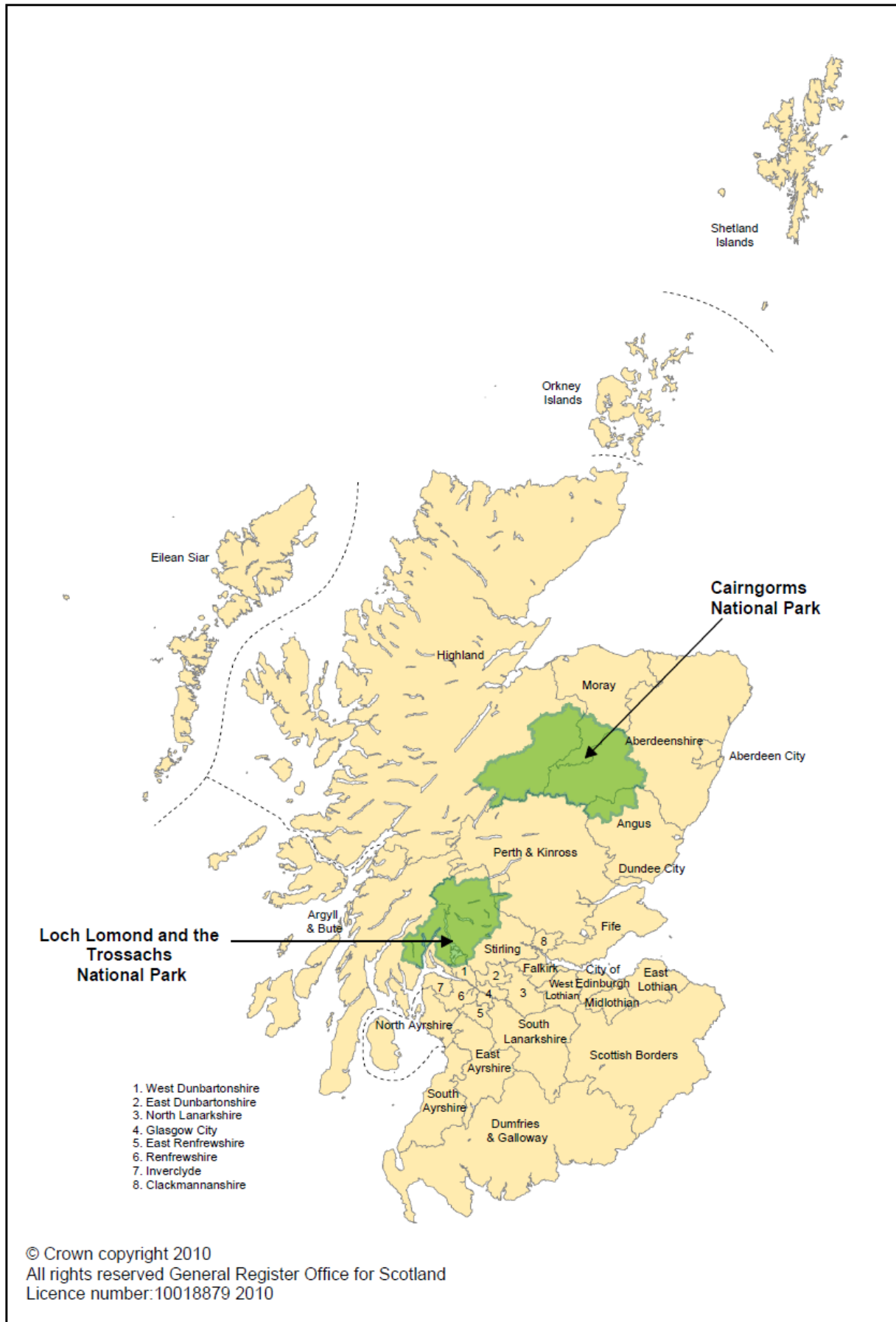
Table B: Total populations in SDP areas in 2008

	Population	Percentage of Scotland's Population
Glasgow & Clyde Valley	1,752,950	34%
Aberdeen City & Shire	448,690	9%
SESplan	1,213,910	23%
TAYplan	475,190	9%
Rest of Scotland	1,277,760	25%
Scotland	5,168,500	100%

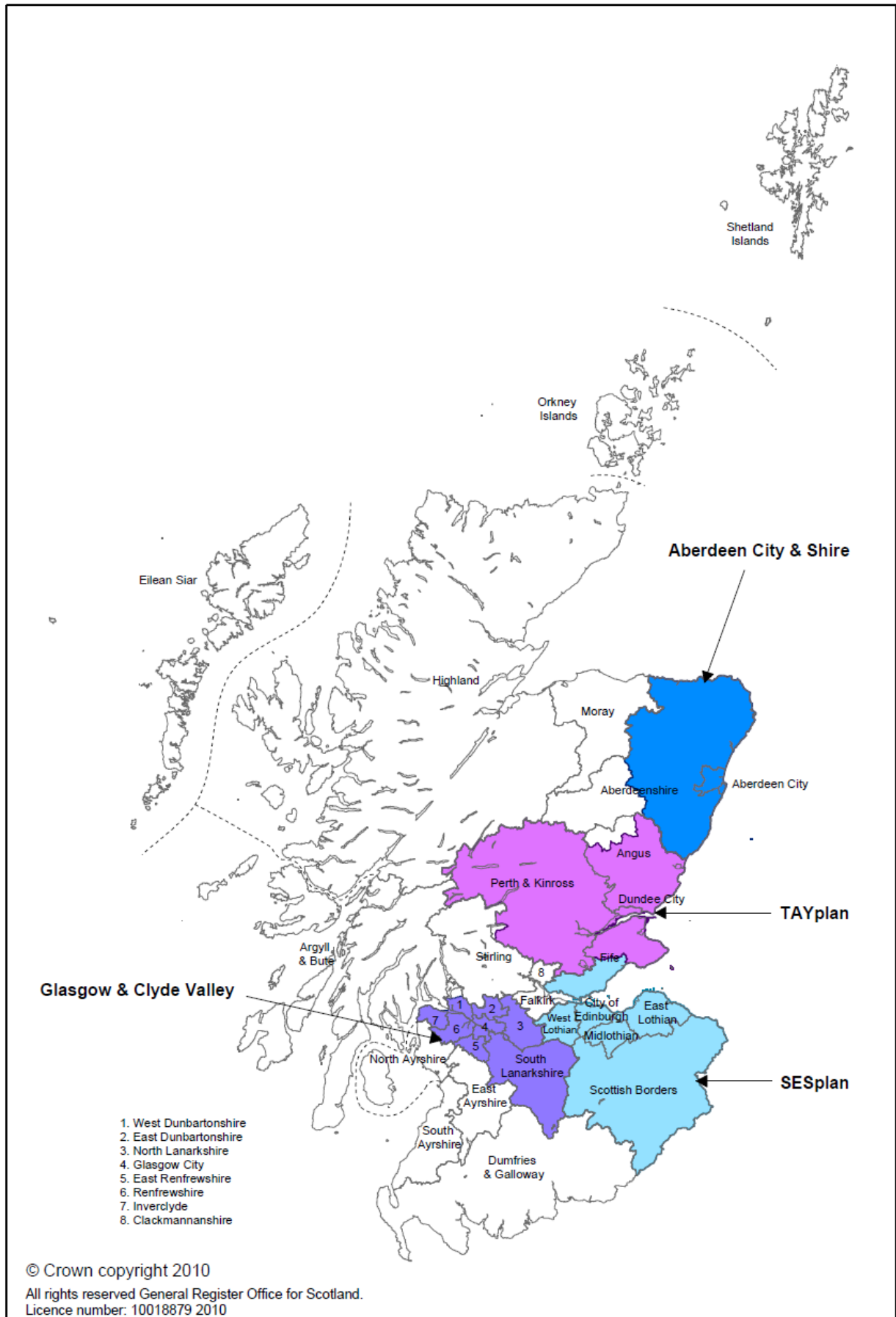
All figures have been rounded to the nearest 10.

- 1.6 Further details of National Park and SDP boundaries are given in [Section 4](#), and in [Maps 3 to 9](#). More information about SDP areas is available from the Scottish Government's Planning Circular 3/08: <http://www.scotland.gov.uk/Publications/2008/11/25145654/15>.
- 1.7 Any boundary change as the result of the Scottish Natural Heritage public consultation (running from 6th March to 31st May 2010) to extend Cairngorms National Park into Perth & Kinross council area has not been included in this publication, as the consultation period had not finished at the time of publication.
- 1.8 These population projections are mainly used:
- to inform planning authorities on future population trends; and
 - to calculate forward projections of the number of households in these areas (which will be published later in the year), to help assess housing needs and future demand.

Map 1: Map of Scotland showing the locations of CNP and LLTNP



Map 2: Map of Scotland showing locations of SDP areas



2 National Parks

2.1 Main Points

The key points in this paper, relating to the National Parks, are:

- Between 2008 and 2033, the population of Cairngorms National Park (CNP) is projected to rise from 16,430 to 19,760 (an increase of 20 per cent) and the population of Loch Lomond and the Trossachs National Park (LLTNP) is projected to fall from 14,590 to 13,140 (a decrease of 10 per cent).
- The number of children aged under 16 in CNP is projected to remain fairly constant over the projection period. The number of children under 16 in LLTNP is projected to decrease by 25 per cent from 2,220 in 2008 to 1,660 in 2033.
- The number of people of working age¹ in CNP is projected to increase from 9,610 in 2008 to 11,180 in 2033, an increase of 16 per cent. In LLTNP the working age population is projected to decrease by 20 per cent from 8,760 in 2008 to 6,990 in 2033.
- The number of people of pensionable age² is projected to rise in CNP by 43 per cent from 4,090 in 2008 to 5,850 in 2033. The number of people of pensionable age in LLTNP is also expected to increase but by a smaller amount (from 3,610 to 4,490 – a 24 per cent rise).
- It is expected in CNP that there will continue to be more deaths than births. The projected population increase is driven by net in-migration, which is assumed to be 200 per year across the projection period.
- In LLTNP the recent pattern of more deaths than births is assumed to continue, and no population change due to migration is projected. Therefore the population of LLTNP is projected to decrease over the projection period.
- The following table shows a summary of the percentage changes in population over the projection period 2008-2033 for Scotland's National Parks and the whole of Scotland.

	CNP	LLTNP	Scotland
Population	20%	-10%	7%
Children (0-15)	0%	-25%	-2%
Working Age ¹	16%	-20%	2%
Pensionable Age ²	43%	24%	31%

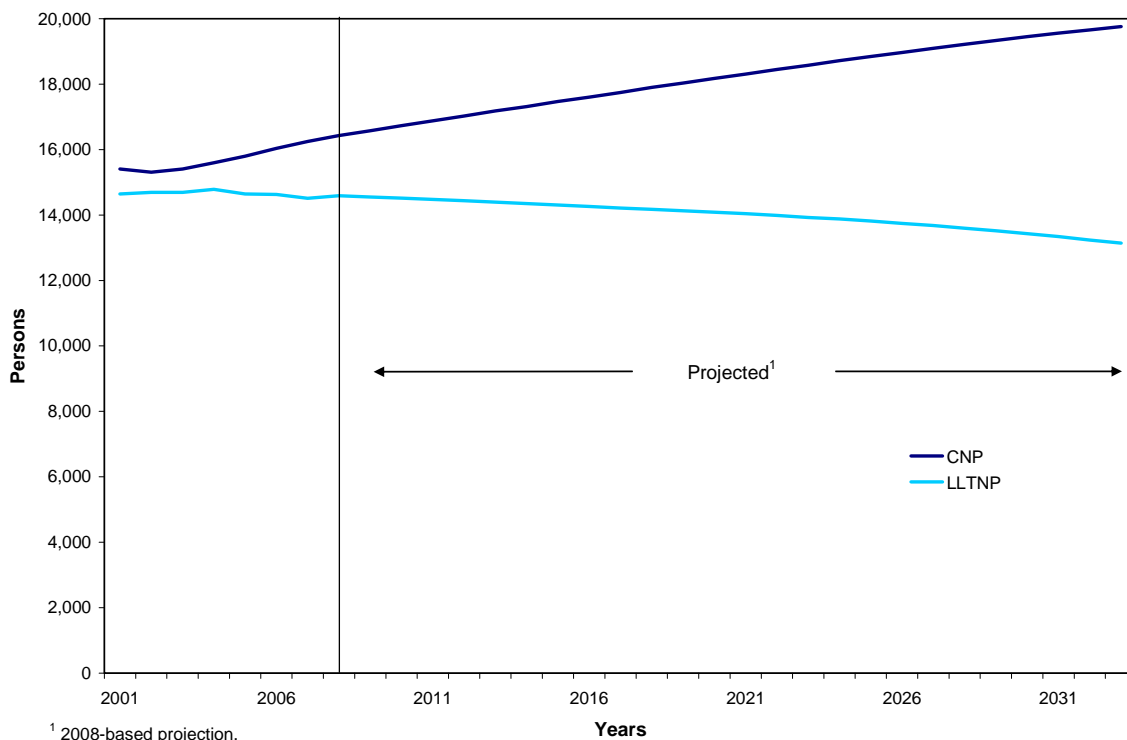
¹ Working age is 16-59 for women and 16-64 for men until 2010. Between 2010 and 2020 working age becomes 16-64 for women. Between 2024 and 2026 working age for both men and women becomes 16-65 and changes again to 16-67 by 2046.

² Pensionable age is 65 for men and 60 for women until 2010. Between 2010 and 2020 pensionable age for women increases to 65. Between 2024 and 2026 the pensionable age for both men and women increases to 66 and changes again to 68 by 2046.

2.2 Total Population

2.2.1 The estimated population of the National Parks in the years 2001 to 2008, and the population projection for the years 2008 to 2033, is illustrated in [Figure 1](#) and summarised in [Table 1](#). The population of CNP is projected to increase by around 20 per cent from 16,430 in 2008 to 19,760 in 2033. The population of LLTNP is projected to decrease by 10 per cent, from 14,590 in 2008 to 13,140 in 2033.

Figure 1: Estimated and projected population of CNP and LLTNP, 2001-2033

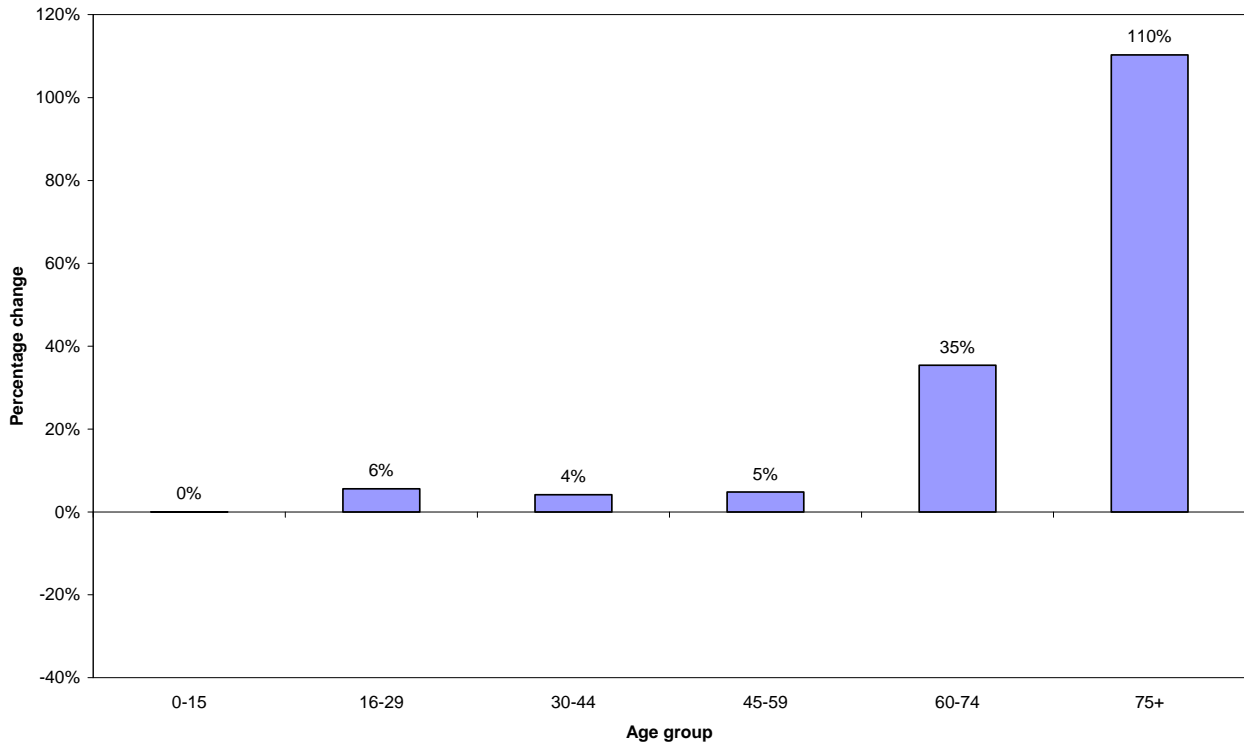


2.3 Age Structure

2.3.1 Cairngorms National Park

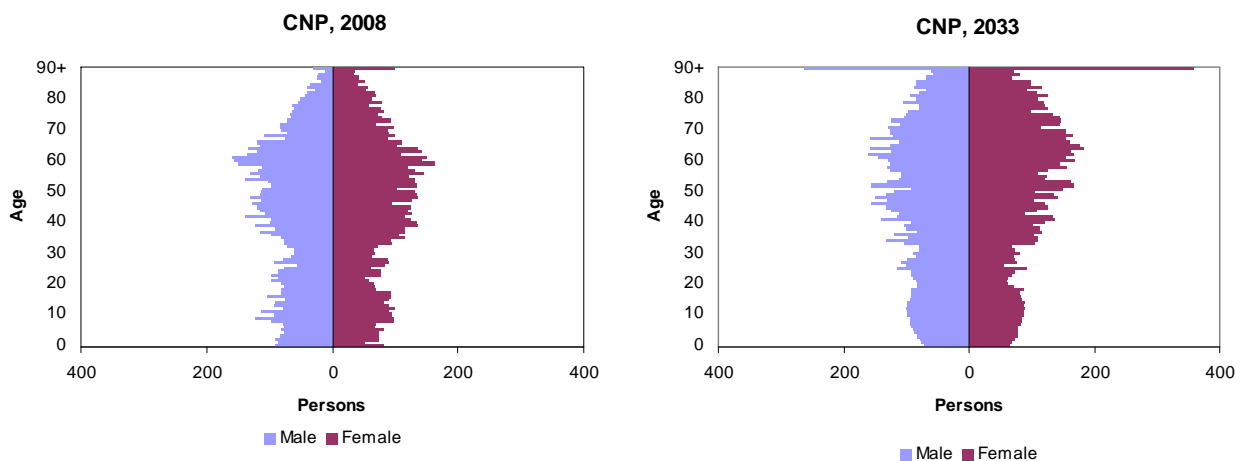
2.3.1.1 Although the population of CNP is projected to rise between 2008 and 2033, the increase is not evenly distributed across all ages, as [Figure 2](#) shows. The number of people aged 75 and over is projected to increase considerably - by 110 per cent. There is an increase of over a third in the population aged 60-74, and smaller increases in the population age groups under 60 (ranging from less than 1 per cent to 6 per cent).

Figure 2: Projected percentage change in population, by age group, CNP, 2008-2033



2.3.1.2 Figure 3 illustrates the changing age structure of CNP. In 2008 there was a small peak of children and a larger peak of people between ages 40 and 65. Due to the projected increase in the population of older age, by 2033 the population is projected to be more evenly distributed across all ages, except for a large increase in the population aged 90 and over.

Figure 3: Estimated and projected population, by age and sex in CNP, 2008 and 2033



2.3.1.3 [Table 2a](#) summarises the changing age structure. For CNP the number of children under 16 is projected to remain fairly constant, at around 2,730. A 16 per cent increase is projected for people of working age, from 9,610 in 2008 to 11,180 in 2033. The largest increase is for people of pensionable age. This age group is projected to increase by 43 per cent from 4,090 in 2008 to 5,850 in 2033.

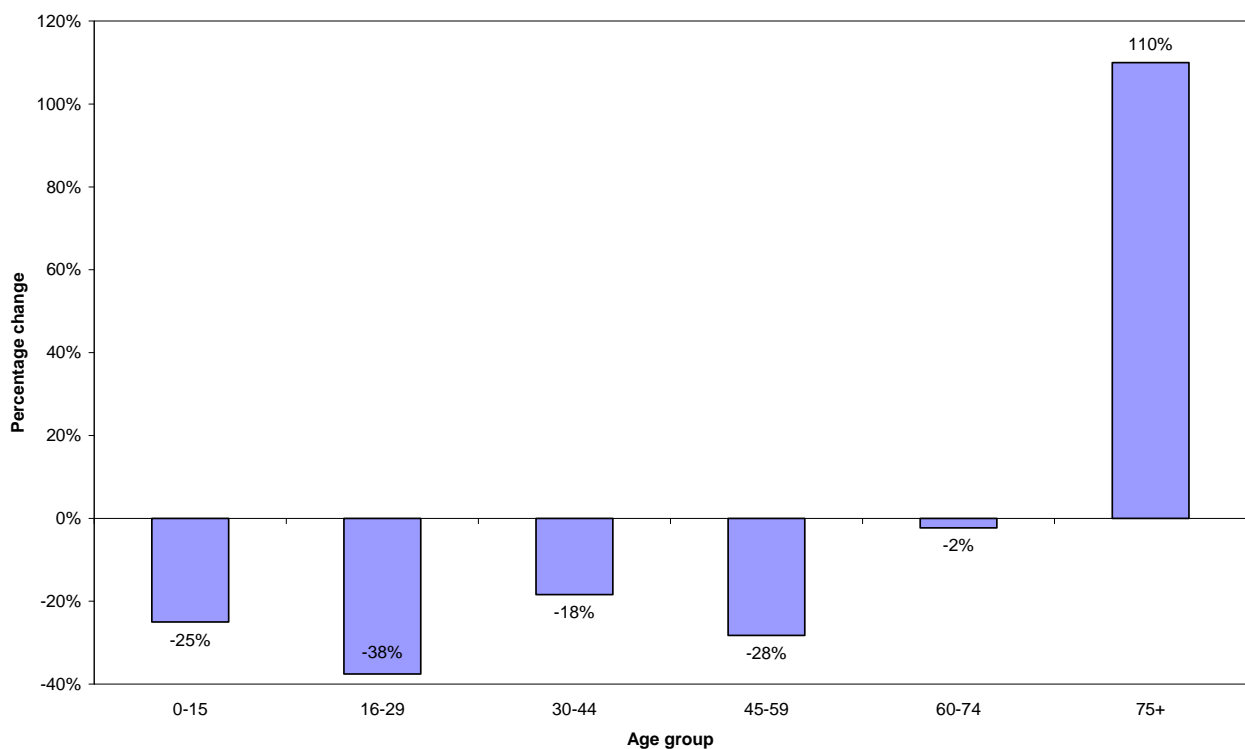
2.3.1.4 The figures in Table 2a take into account changes in the state pension age which will increase from 60 to 65 for women between 2010 and 2020, and then from 65 to 66 for both sexes between 2024 and 2026. There are no further changes in the state pension age until 2034.

2.3.1.5 Projected populations for CNP, by sex and five year age groups, are given in Table 3a.

2.3.2 Loch Lomond and the Trossachs National Park

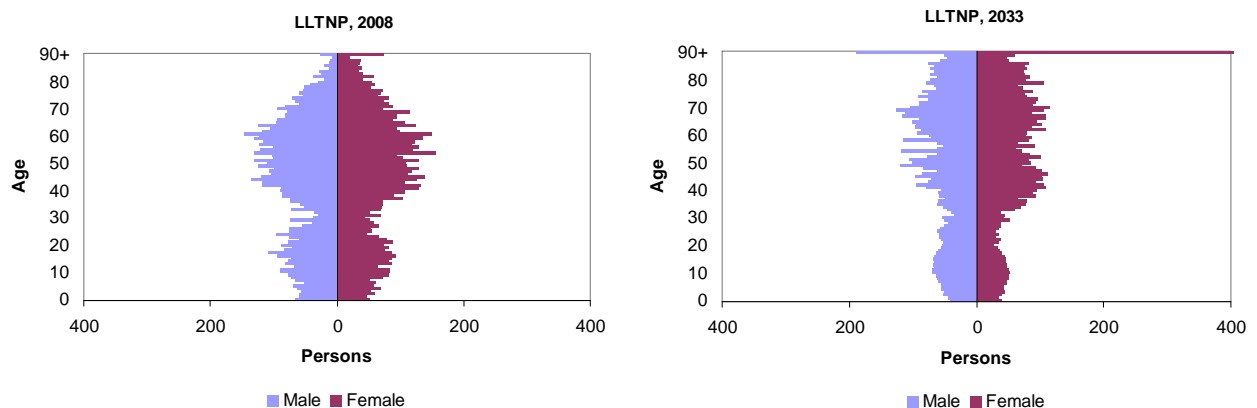
2.3.2.1 As shown in Figure 4, all age groups except 75 and over in LLTNP are projected to decrease by 2033. The number of people of 75 and over is projected to increase by 110 per cent, which is similar to CNP. For LLTNP the population aged 16-29 is the age group projected to decrease the most (38 per cent). The number of children aged under 16 is projected to decrease by 25 per cent. The 30-44, 45-59 and 60-74 age groups are also projected to decrease by 18, 28, and 2 per cent respectively.

Figure 4: Projected percentage change in population, by age group, LLTNP, 2008-2033



2.3.2.2 Figure 5 highlights the changing age structure of LLTNP. In 2008 there are peaks in the teenage population and the population aged 40 to 60. By 2033 the age structure looks top-heavy, with the largest group aged 90 and over. This is due to large decreases in the population aged under 30, and an increase in the elderly population.

Figure 5: Estimated and projected population, by age and sex in LLTNP, 2008 and 2033



2.3.2.3 [Table 2b](#) shows that there is projected to be a 25 per cent decrease in children in LLTNP, from 2,220 in 2008 to 1,660 in 2033. The population of working age is also projected to decrease (by 20 per cent) from 8,760 to 6,990. The population of pensionable age is projected to increase by 24 per cent from 3,610 to 4,490 by 2033, due mainly to the ageing of the existing population in 2008.

2.3.2.4 The figures in [Table 2b](#) take into account changes in the state pension age which will increase from 60 to 65 for women between 2010 and 2020, and then from 65 to 66 for both sexes between 2024 and 2026. There are no further changes in the state pension age until 2034.

2.3.2.5 Projected populations by sex and five year age groups for LLTNP are shown in [Table 3b](#).

2.4 Components of population change

2.4.1 Cairngorms National Park

2.4.1.1 [Table 4a](#) shows projected net migration and natural change (births minus deaths) in CNP between 2008 and 2033. The number of deaths is projected to continue to exceed the number of births (giving negative natural change), and the gap between births and deaths is projected to increase from 40 per year to 100 per year over the projection period. This is due to a rise in the number of deaths (because of the ageing population) whilst births remain fairly constant.

2.4.1.2 A net inflow of 200 migrants per year is likely. This exceeds the negative natural change and accounts for the increase in the total population in CNP between 2008 and 2033.

2.4.2 Loch Lomond and Trossachs National Park

- 2.4.2.1 [Table 4b](#) shows that in LLTNP deaths are projected to exceed births (negative natural change) throughout the period 2008 to 2033. The gap between births and deaths increases from 30 per year to 110 per year during the 25 year projection period.
- 2.4.2.2 Over the projection period, net migration is assumed to be zero. With the decrease in births and increase in deaths, this leads to a projected decrease of 1,450 (10 per cent) in the population of LLTNP between 2008 and 2033.

3 Strategic Development Plan areas

3.1 Main Points

The key points in this paper, relating to the Strategic Development Plan (SDP) areas, are:

- Between 2008 and 2033, the population of all four SDP areas is projected to rise. SESplan is the SDP area projected to have the largest population increase (17 per cent), followed by Aberdeen City & Shire SDP area (14 per cent), TAYplan SDP area (8 per cent), and Glasgow & Clyde Valley SDP area (less than 1 per cent).
- The number of children aged under 16 is projected to increase in three of the four SDP areas. The biggest increase projected for this age group is a 9 per cent increase in SESplan SDP area. Glasgow & Clyde Valley SDP area is the only area where the number of children is projected to fall, where a 9 per cent decrease is projected for this age group.
- The number of people of working age³ is also projected to increase in all SDP areas except for Glasgow & Clyde Valley SDP area (a 4 per cent decrease). Increases range from a 13 per cent increase in SESplan SDP area to 2 per cent in TAYplan SDP area.
- The number of people of pensionable age⁴ is projected to rise in all four SDP areas, ranging from a 23 per cent increase for Glasgow & Clyde Valley SDP area to a 48 per cent rise for Aberdeen City & Shire SDP area.
- With the exception of SESplan SDP area, the number of births is projected to fall over the projection period, whilst the number of deaths is projected to rise in all four SDP areas.
- In the long-term, net migration is assumed to decrease from current levels in 2008 in all four SDP areas.
- The following table shows the percentage changes in population over the projection period 2008-2033 for Scotland's Strategic Development Plan Areas and for the whole of Scotland.

	Glasgow & Clyde Valley	Aberdeen City & Shire	SESPlan	TAYPlan	Scotland
Population	0%	14%	17%	8%	7%
Children (0-15)	-9%	4%	9%	2%	-2%
Working Age ³	-4%	7%	13%	2%	2%
Pensionable Age ⁴	23%	48%	38%	28%	31%

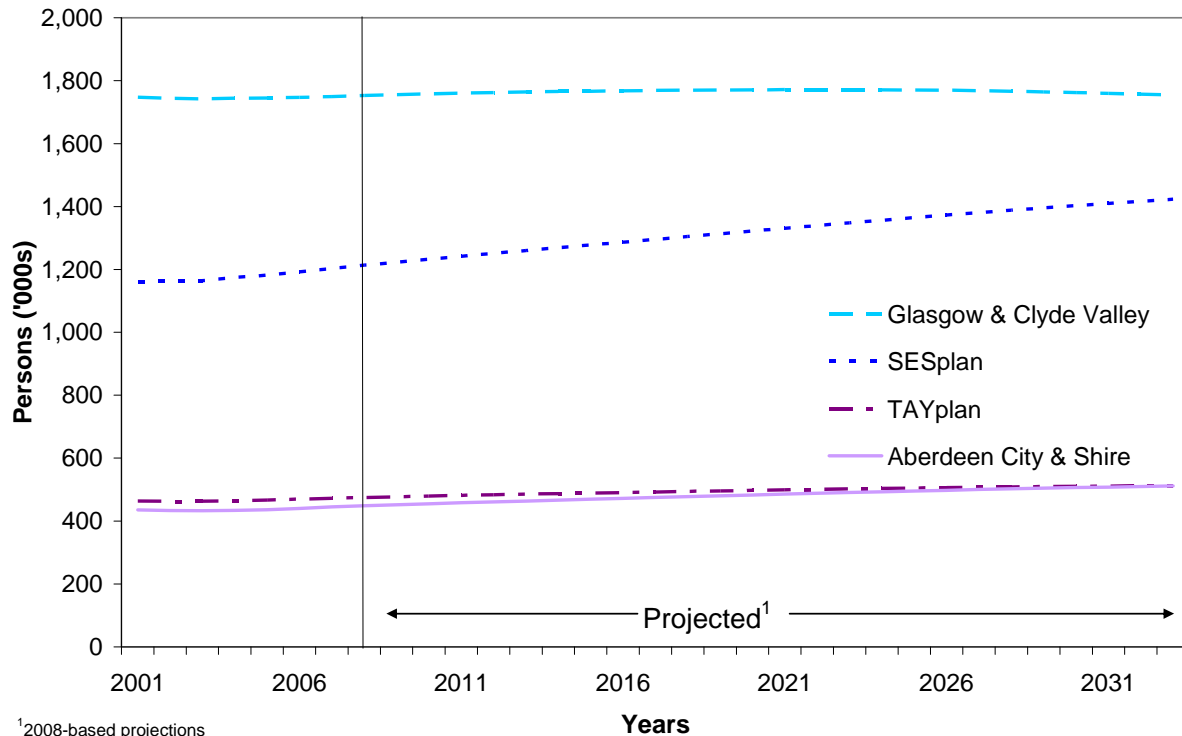
³ Working age is 16-59 for women and 16-64 for men until 2010. Between 2010 and 2020 working age becomes 16-64 for women. Between 2024 and 2026 working age for both men and women becomes 16-65 and changes again to 16-67 by 2046.

⁴ Pensionable age is 65 for men and 60 for women until 2010. Between 2010 and 2020 pensionable age for women increases to 65. Between 2024 and 2026 the pensionable age for both men and women increases to 66 and changes again to 68 by 2046.

3.2 Total population

3.2.1 Population estimates and projections for the years 2001 to 2033 for SDP areas are shown in [Table 5](#) and illustrated in [Figure 6](#).

Figure 6: Estimated and projected population of SDP areas, 2001-2033



3.2.2 Population projections for SDP areas show the following trends:

- the population of Glasgow & Clyde Valley SDP area is projected to increase from 1.75 million in 2008 to a peak of 1.77 million in 2022 and then decrease to 1.75 million in 2033. From 2008 to 2033, there is a projected increase of less than 1 per cent;
- the population of Aberdeen City & Shire SDP area is projected to increase during the projection period, from 0.45 million in 2008 to 0.51 million in 2033 – an increase of 14 per cent;
- the population of SESplan SDP area is also projected to increase from 1.21 million in 2008 to 1.42 million in 2033 – an increase of 17 per cent; and
- the population of TAYplan SDP area is projected to increase from 0.48 million in 2008 to 0.51 million in 2033 – an increase of 8 per cent.

3.3 Age structure

3.3.1 A summary of projected populations by broad age group is given in [Tables 6a to 6d](#) and projected populations by sex and five year age groups is given in [Tables 7a to 7d](#). These tables, along with [Figure 7](#) and [Figure 8](#), show that the age structure of all SDP areas is projected to change notably between 2008 and 2033.

- 3.3.2 The population pyramids in [Figure 7](#) show that, in all SDP areas, the population is ageing. In particular, there are substantial projected increases in the oldest age groups. By 2033 approximately 2 per cent of the population is projected to be aged 90 or older in all SDP areas, with almost two thirds of the people in this age group being women.
- 3.3.3 [Figure 8](#) and [Tables 6a to 6d](#) show the percentage increases for different age groups of the population. In the under 16 age group, the biggest increase is projected in SESplan SDP area – by 9 per cent, from 212,530 in 2008 to 231,490 in 2033. Aberdeen City & Shire SDP area is projected to have an increase of 4 per cent in this age group from 78,980 in 2008 to 82,200 in 2033; TAYplan is projected to have a 2 per cent increase from 80,410 to 81,750; where as Glasgow & Clyde Valley SDP area is projected to have a decrease of 9 per cent, from 314,690 to 286,420.
- 3.3.4 SESplan SDP area is projected to have increases in the population age groups 16-29, 30-44 and 45-59, ranging from 2 to 8 per cent. The population within these age groups in the other three SDP areas is projected to decrease, ranging from a less than 1 per cent decrease in the population aged 45-59 in Aberdeen City & Shire, to a 15 per cent decrease in the population aged 16-29 in Glasgow & Clyde Valley SDP area.
- 3.3.5 The population aged 75 and over is projected to increase in all SDP areas. The biggest increase is projected in Aberdeen City & Shire SDP area, (+109 per cent). SESplan and TAYplan SDP areas are projected to have a 91 per cent and a 79 per cent increase respectively, and the smallest increase is projected in Glasgow & Clyde Valley SDP area (+65 per cent).

Figure 7: Estimated and projected population, by age and sex in SDP areas, 2008 and 2033

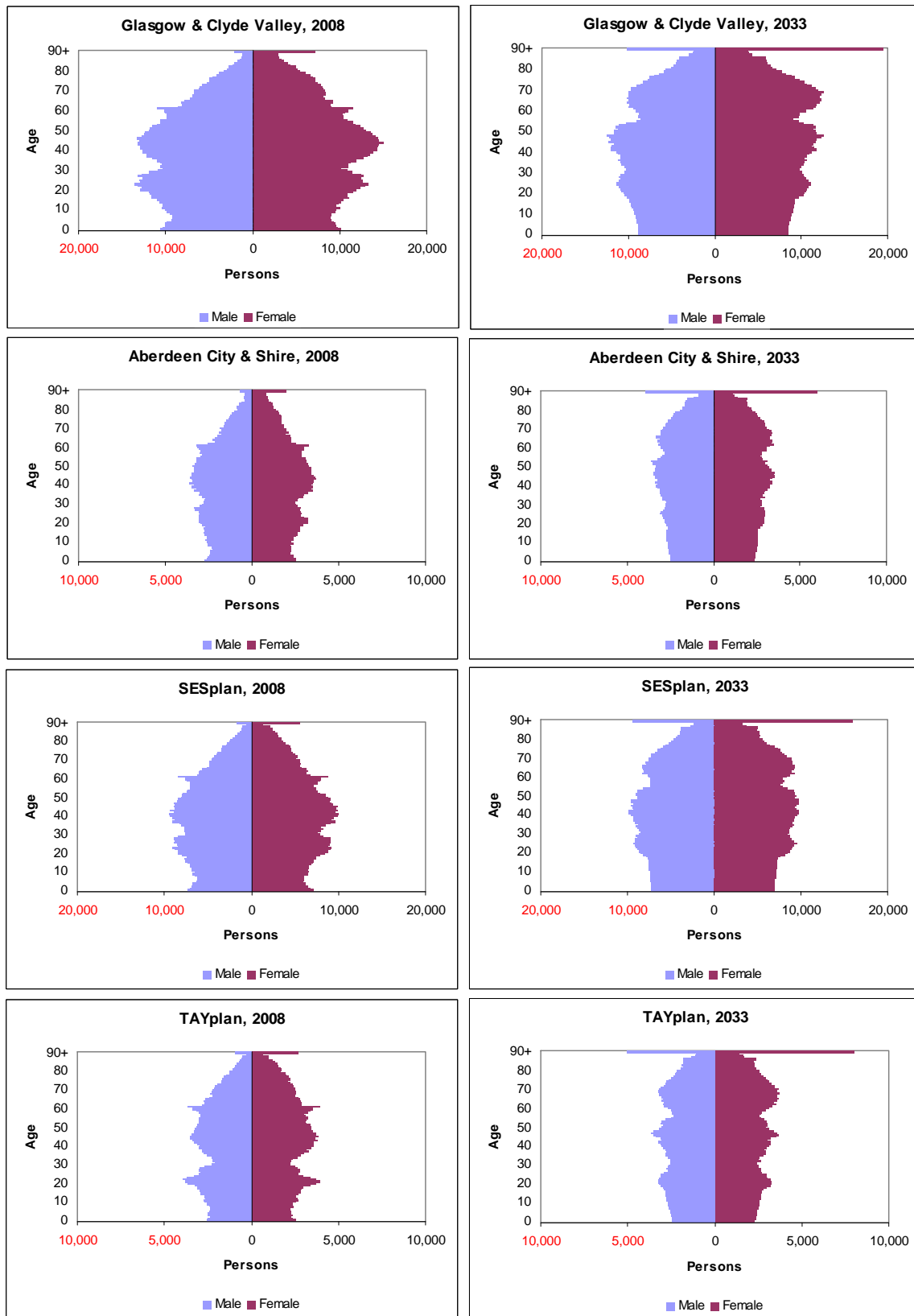
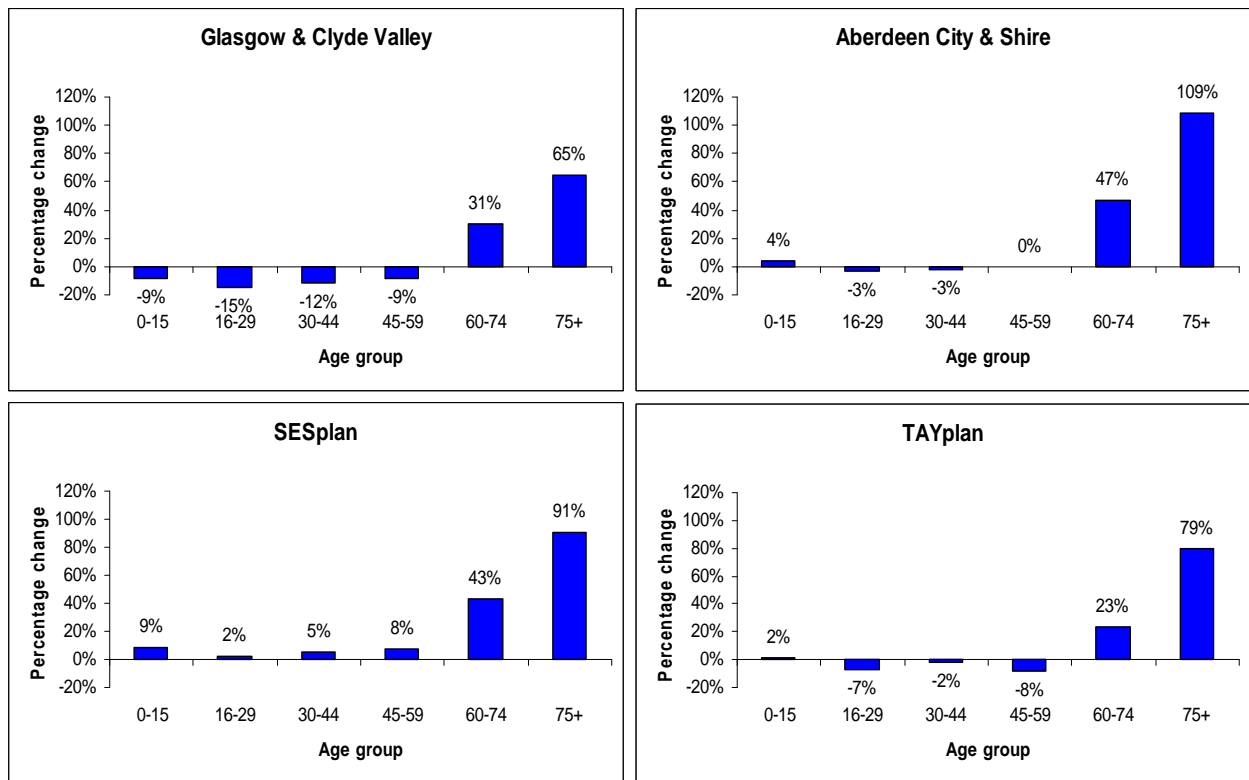


Figure 8: Projected percentage change in population, by age group, in SDP areas, 2008-2033



3.4 Components of population change

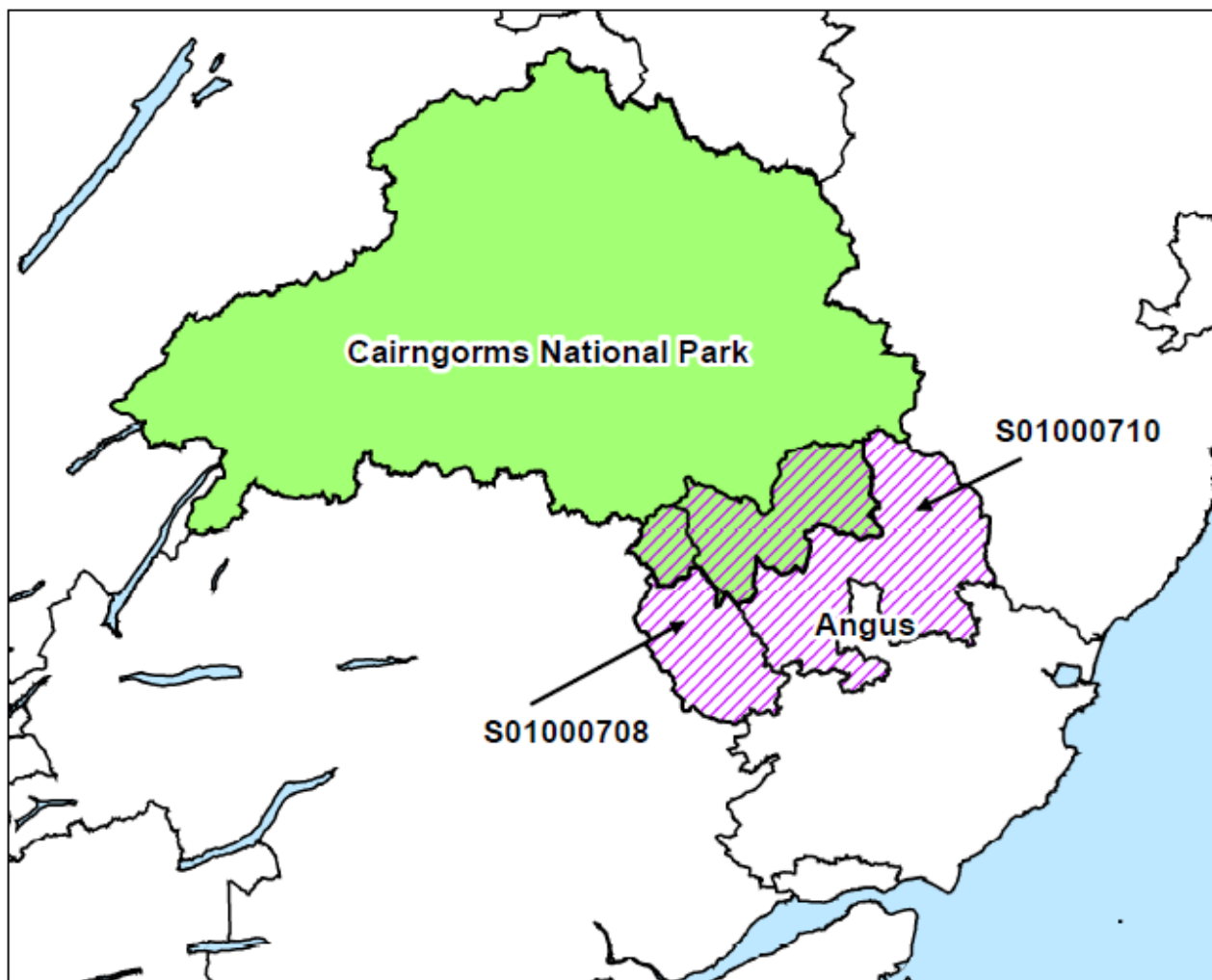
- 3.4.1 A summary of the components of population change for selected years can be seen in [Tables 8a to 8d](#), and full tables are available on the General Register Office for Scotland website.
- 3.4.2 In Glasgow & Clyde Valley SDP area, natural change (births minus deaths) is positive to begin with (at about +2,000 per year) and increases to a peak in 2016-17 (+2,400) before decreasing to a negative value (-1,690) by the end of the projection period. The increasing trend until 2016 is due to a decrease in deaths over this period: although births are decreasing, deaths are decreasing at a faster rate. Deaths reach their lowest point in 2019 before starting to increase as the population ages, and births continue to decrease. Migration gains at the start of the period are projected to reverse after 2011, with net out-migration of about 1,300 per year projected from 2014 onwards. This out-migration, accentuated by negative natural change, means that the area's population is projected to decrease by almost 3,000 per year at the end of the period. Over the whole 25 year period, however, the population is projected to increase very slightly (by 1,180).
- 3.4.3 At the start of the projection period in Aberdeen City & Shire SDP area natural change is positive (about 900 more births than deaths per year), and increases to a peak of 930 in 2017 before decreasing for the remainder of the projection period and turning negative by the end (150 more deaths than births in 2033). There is projected to be net in-migration of between 2,400 and 1,800 per year throughout the projection period. These factors combine to give a projected increase in population throughout the projection period of over 3,000 per year at the start of the period and over 1,600 per year at the end.
- 3.4.4 In SESplan SDP area, positive natural change (ranging from about 2,600 per year at the start of the period to about 800 per year at the end) coupled with net in-migration (of around 6,000 per year) is projected for each year of the projection period from 2008-2033. The number of births remains fairly constant and the number of deaths increases slightly over the projection period but still remains low enough to result in a positive natural change for each year. These factors combine to give a total population that is projected to increase steadily throughout the projection period, by about 9,000 per year at the start of the period and almost 7,000 per year at the end.
- 3.4.5 In TAYplan SDP area, negative natural change is projected for each year of the projection period except for the period from 2016-2019, with deaths exceeding births by about 250 per year at the start of the period, and by over 1,000 per year at the end. The births for this area initially fall and then rise to a peak in 2018 before falling again. The number of deaths initially falls slightly to its lowest point in 2016, before rising steadily for the remainder of the projection period as the population ages. However, this is countered by net in-migration of almost 2,300 per year at the start of the period, falling to 1,720 per year at the end. This leads to a projected increase in the total population throughout the projection period, by 2,000 per year at the start of the period, falling to about 700 per year at the end.

4 Boundaries

4.1 Data zones

- 4.1.1 The figures in this publication are based on the projected populations of 'data zones'. Data zones are the standard small area geography used by the Scottish Government. In general they have populations of between 500 and 1,000 residents. Data zone boundaries do not exactly match the National Park and SDP area boundaries and so, for the purpose of the projections, data zones are included or excluded based on the 'population weighted centroid'. The use of data zone centroids is a standard approach for assigning the population of a small geographical area to a larger area if the small area does not wholly fit within the boundaries of the larger area or lies across the border of two larger areas. The centroid is not a representation of the geographical centre of the data zone, but rather a representation of the population weighted centre or, put more simply, the population "centre of gravity" of the area. In this publication, a data zone is allocated to the National Park if the population weighted centroid lies within the park boundary.
- 4.1.2 For example, there are two data zones in Angus council area (S01000708 and S01000710) that overlap the boundary of Cairngorms National Park. The population weighted centroid of both data zones lies outside the National Park, and they have therefore been assigned to the TAYplan area rather than to Cairngorms National Park (see [Map 3](#)). Thus in practice, the population of the whole of Angus council area is included in the projections for TAYplan SDP area. Because the population of the area of overlap is very small, this makes a negligible difference to the projections. Similar circumstances apply to the small part of Perth & Kinross council area that lies within Loch Lomond and the Trossachs National Park, and a small part of Aberdeenshire council area that lies within the Cairngorms National Park.

Map 3: Data zones in Cairngorms National Park and Angus council area

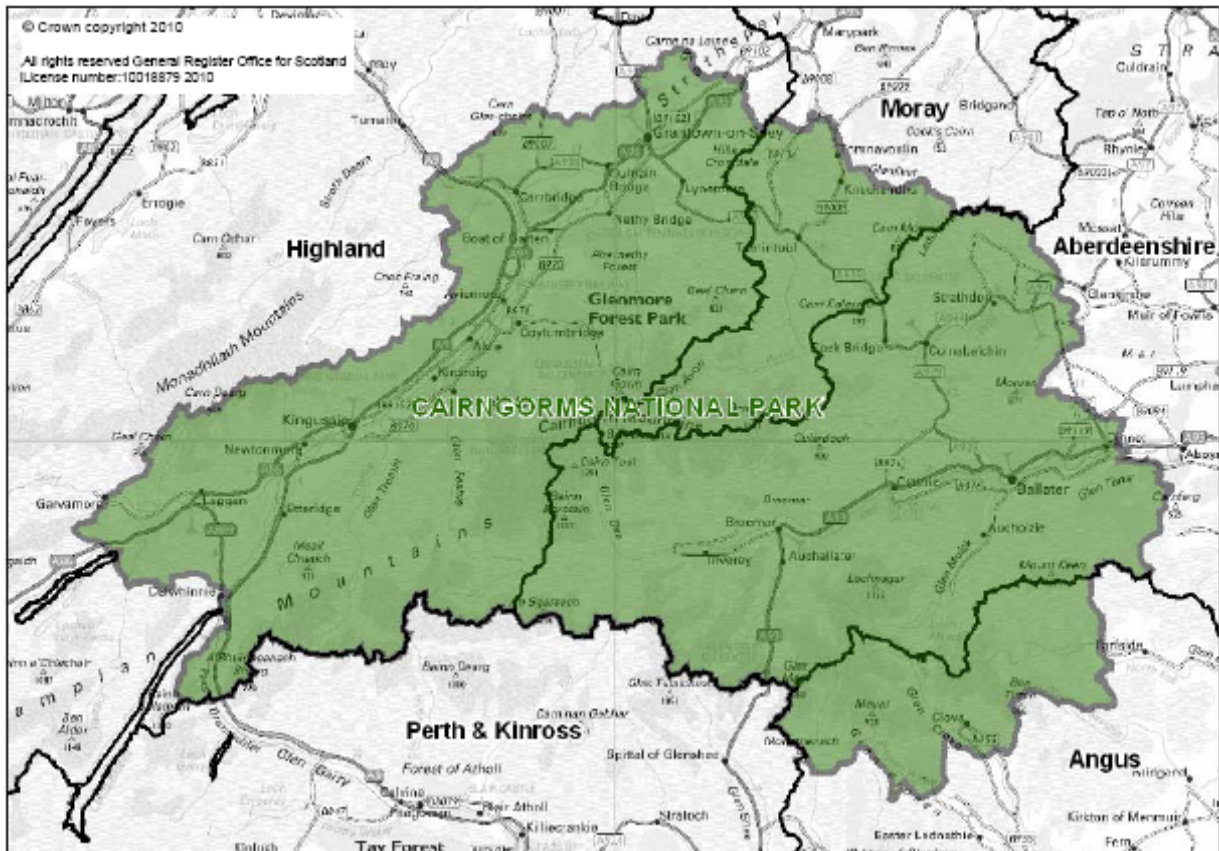


© Crown copyright 2010
All rights reserved General Register Office for Scotland
Licence number: 10018879 2010

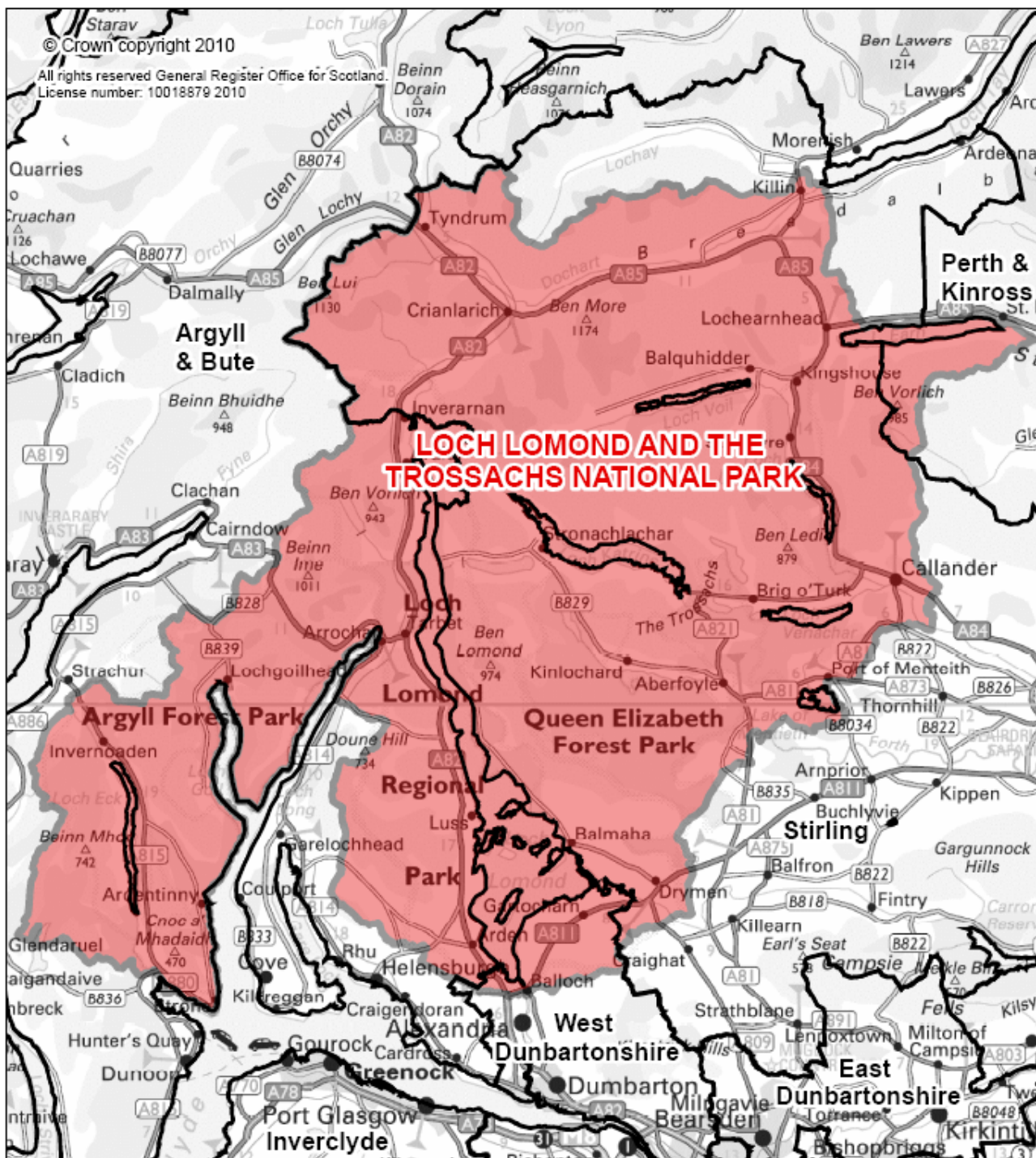
4.2 National Park boundaries

- 4.2.1 [Maps 4 and 5](#) show the boundaries of the two National Park areas (rather than the data zones used in this publication, which are listed in [Annex A](#)). Maps comparing the geographical and data zone boundaries, which highlight the areas included and excluded from each area, are available at:
<http://www.gro-scotland.gov.uk/statistics/publications-and-data/household-projections-statistics/sdp-areas-natparks-08based/maps.html>

Map 4: The boundaries of CNP and the constituent local authorities



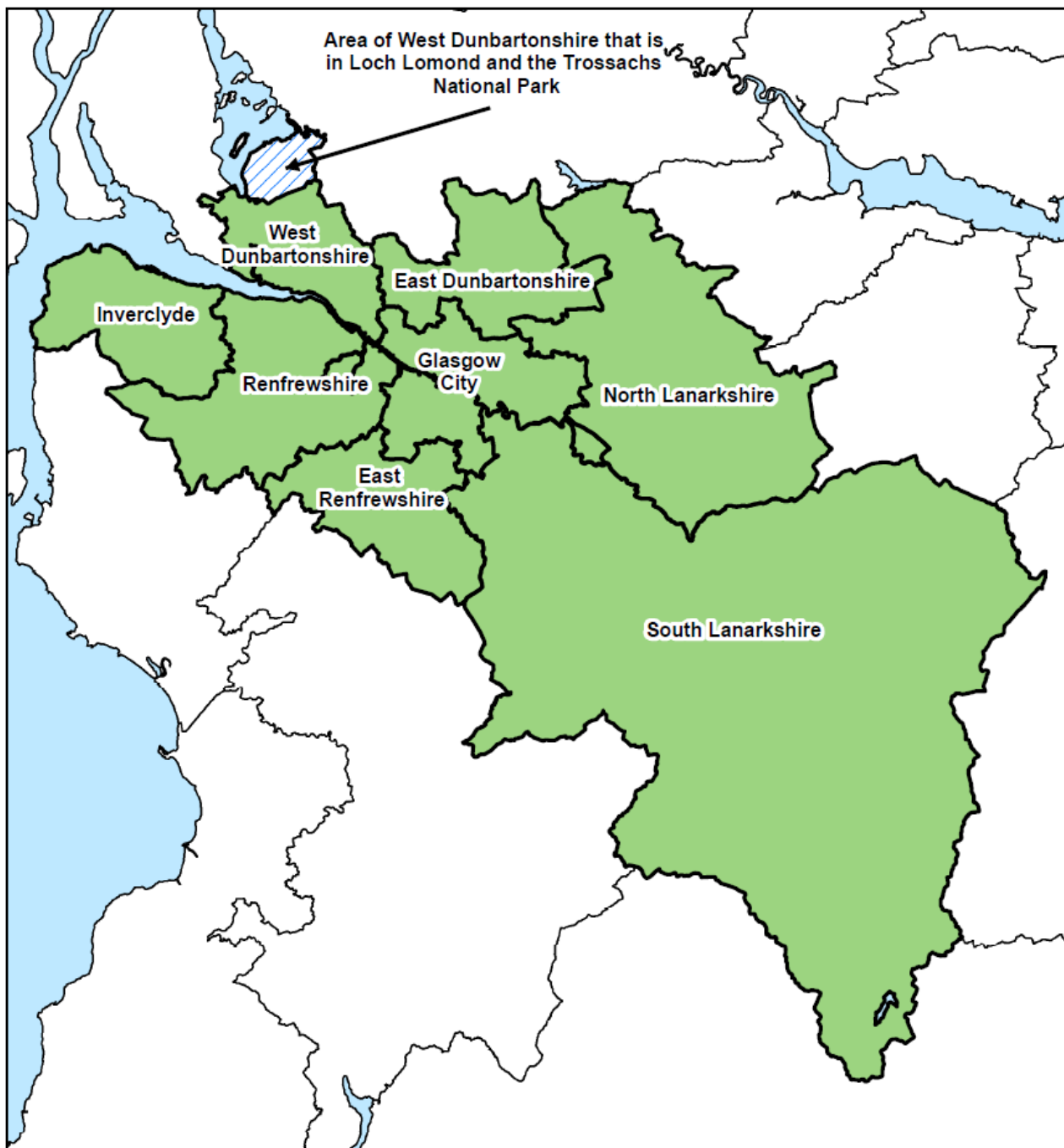
Map 5: The boundaries of LLTNP and the constituent local authorities



4.3 SDP area boundaries

4.3.1 The data zone boundaries of the SDP areas are shown in [Maps 6 to 9](#). The maps show the data zones used to calculate the population projections rather than the actual SDP area. A list of the data zones used to split Aberdeenshire, West Dunbartonshire and Fife into the appropriate SDP areas for these projections can be found in [Annex B](#).

Map 6: The location of Glasgow & Clyde Valley SDP area and the constituent local authorities



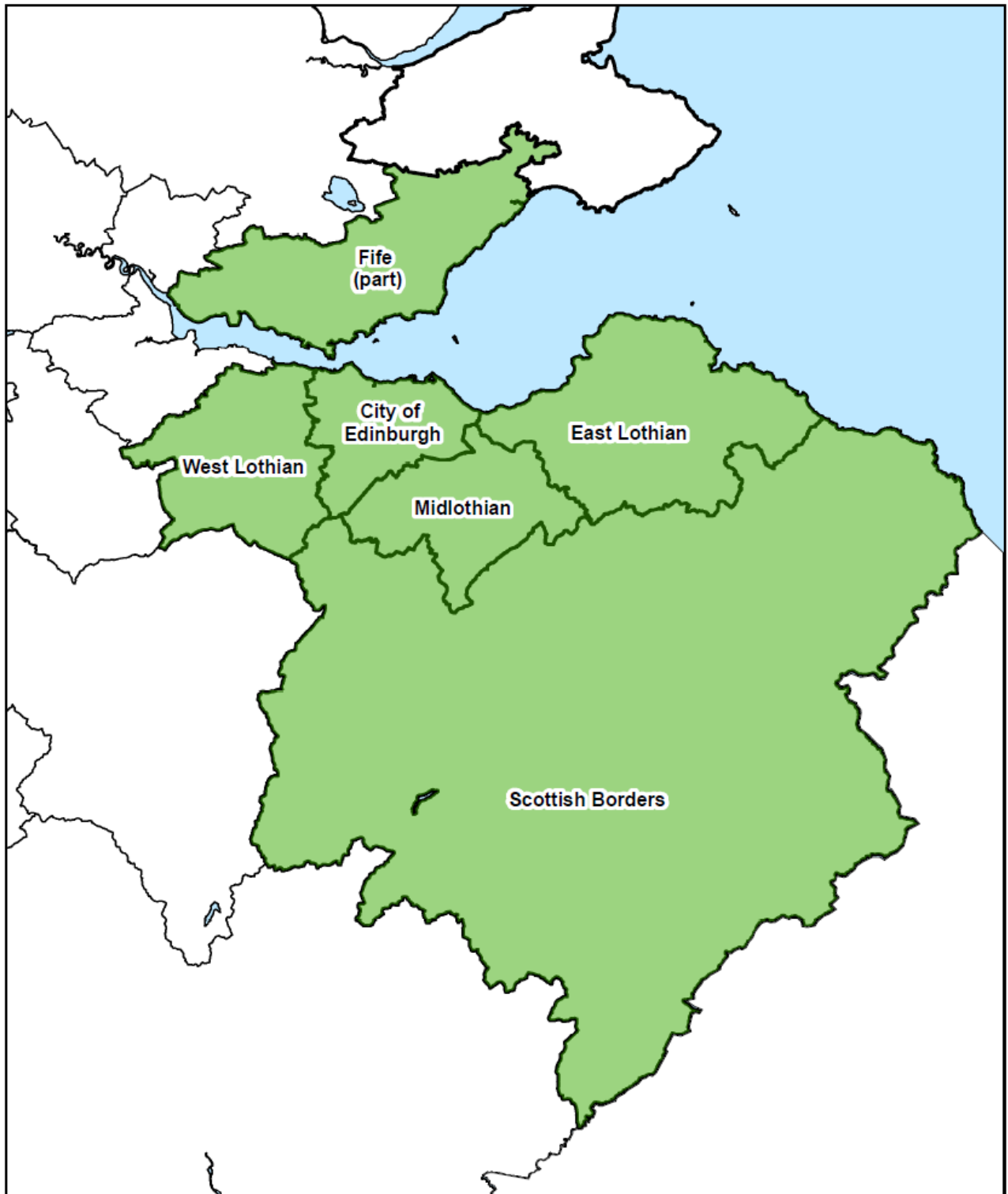
© Crown copyright 2010
All rights reserved General Register Office for Scotland
Licence number: 10018879 2010

Map 7: The location of Aberdeen City & Shire SDP area and the constituent local authorities



© Crown copyright 2010
All rights reserved General Register Office for Scotland
Licence number: 10018879 2010

Map 8: The location of SESplan SDP area and the constituent local authorities



© Crown copyright 2010
All rights reserved General Register Office for Scotland
Licence number: 10018879 2010

Map 9: The location of TAYplan SDP area and the constituent local authorities



© Crown copyright 2010
All rights reserved General Register Office for Scotland
Licence number: 10018879 2010

5 Notes on the population projections

5.1 Interpreting the projections

- 5.1.1 These population projections have limitations. A projection is a calculation showing what happens if particular assumptions are made. Projections for small areas like the National Parks are likely to be less reliable than those for larger areas.
- 5.1.2 Every two years the Office of National Statistics (ONS), in consultation with the Registrars General for Scotland and Northern Ireland, produces a “principal” population projection and a number of “variant” projections, based on alternative assumptions of future fertility, mortality and migration, for the UK and its constituent countries. Projections for the National Parks and SDP areas are based on the “principal” population projection. More information on the principal projection for Scotland and the assumptions used can be found at:
<http://www.gro-scotland.gov.uk/statistics/publications-and-data/popproj/projected-population-of-scotland-2008-based/index.html>.
- 5.1.3 For the population projections by sex, age and administrative area, published on 3rd February 2010, high and low migration variant population projections were produced. High and low migration variant population projections for Scotland’s National Parks and SDP areas will be available on the General Register Office for Scotland website from 21st July 2010.
- 5.1.4 For SDP areas, population projections were calculated by aggregating the projections for the constituent council areas (which have already been published) and then subtracting any areas which do not form part of the SDP area such as areas which overlap with the National Parks. (For further details of the boundaries used, see [Section 4](#).)

5.2 Methodology

5.2.1 General

- 5.2.1.1 These population projections were produced using the demographic component method using a single year projection model – that is, a projection made by sex and single year of age for each future year. The projection starts with population estimates for the base year, disaggregated by single year of age, sex and area. Assumptions about future fertility, mortality and migration are then used to project the future population.
- 5.2.1.2 A more detailed description of population projections methodology can be found at:
<http://www.gro-scotland.gov.uk/files2/stats/projected-population-of-scotland-2008-based/projected-population-of-scotland-2008-based-publication/j1125004.htm>
- 5.2.1.3 The software used to produce the National Park and SDP area population projections is a combination of the General Register Office for Scotland’s Microsoft (MS) Excel macro population projection system and POPGROUP which is owned by the University of Manchester.

5.2.2 National Parks

- 5.2.2.1 The base populations for CNP and LLTNP were built up from the General Register Office for Scotland's mid-2008 data zone populations, as explained in [Section 4](#). A full list of the data zones that have been used to calculate the projected population of the National Parks can be found in [Annex A](#).
- 5.2.2.2 For National Park areas, the fertility and mortality rates assumed in the national population projections, have been adjusted to take account of local variations observed in the five year period preceding the projection. For migration, the long-term assumptions were calculated using five year averages of migration in and out of the National Park areas. These averages were then scaled to match the migration assumptions used in the national projections. After the long-term assumption had been calculated for each area, the percentage of migrants located in each area was calculated for the long-term assumption and also in the base year using the 2007-08 migration figures. The change in the percentage of migration in each area from the base year to the long-term projection was then calculated and divided across the run-in years. The national assumptions for the run-in years were then divided up for each area – the two National Parks and the rest of Scotland. Migration assumptions are however speculative, especially for small areas like the National Parks.

5.2.3 Strategic Development Plan areas

- 5.2.3.1 Where a council area lies entirely within an SDP area, previously published numbers of births, deaths and migrants were used. For Fife council area, which is split between two SDP areas, variations in fertility and mortality within the council area were accounted for using the numbers of births and deaths observed in these areas in the previous five years. This is similar to the method used to derive projections for council areas. Long-term migration assumptions for the two parts of Fife were also calculated using a similar method to that employed for the council area projections. Five year averages of migration in and out of the different parts of Fife were made consistent with the assumed total net migration for Fife.
- 5.2.3.2 For the other councils which are not entirely within an SDP area (Aberdeenshire and West Dunbartonshire) a simpler method was used. As the areas outside the SDP area boundary have small populations, it was not deemed necessary to take account of variations in fertility, mortality or migration rates within the different parts of the council areas.
- 5.2.3.3 A full list of data zones used can be found in [Annex B](#).

6 Related publications

General Register Office for Scotland population estimates and projections, including equivalent projections for Scotland and local authority areas, are available from <http://www.gro-scotland.gov.uk/statistics/population/index.html>.

You can register with the Scottish Government's ScotStat website, to receive notification of any statistics published by GROS or the Scottish Government: <http://www.scotland.gov.uk/Topics/Statistics/scotstat/Intro>.

More information about the planning system in Scotland is available from the Scottish Government's website at <http://www.scotland.gov.uk/Topics/Built-Environment/planning>

Please note that population figures in all the following tables are rounded to the nearest ten. Therefore, the totals shown may not be equal to the sum of the constituent parts.

Table 1: Estimated and projected total population of the National Parks, 2001- 2033

Estimated total population of the National Parks, 2001-2008

National Park	2001	2002	2003	2004	2005	2006	2007	2008
CNP	15,410	15,310	15,410	15,600	15,800	16,040	16,250	16,430
LLTNP	14,650	14,690	14,690	14,790	14,650	14,630	14,510	14,590

Projected total population of the National Parks, selected years

National Park	2013	2018	2023	2028	2033	Change 2008-2033	
CNP	17,180	17,900	18,580	19,220	19,760	3,330	20%
LLTNP	14,400	14,180	13,930	13,600	13,140	-1,450	-10%

Table 2a: Projected population of Cairngorms National Park, by age group and age structure, 2008-2033

	2008	2013	2018	2023	2028	2033	Change 2008-2033	
All Ages	16,430	17,180	17,900	18,580	19,220	19,760	3,330	20%
0-15	2,730	2,750	2,730	2,750	2,720	2,730	0	0%
16-24	1,440	1,420	1,450	1,440	1,470	1,440	0	0%
25-29	750	860	830	840	850	870	120	16%
30-34	740	820	930	900	910	920	180	24%
35-44	2,270	2,090	1,950	2,160	2,240	2,210	-60	-3%
45-54	2,410	2,610	2,730	2,550	2,400	2,630	220	9%
55-59	1,310	1,230	1,370	1,430	1,500	1,250	-60	-5%
60-64	1,380	1,350	1,270	1,410	1,470	1,550	170	12%
65-74	1,790	2,220	2,540	2,460	2,550	2,740	950	53%
75-84	1,180	1,250	1,390	1,790	2,060	2,020	840	71%
85+	440	580	700	850	1,040	1,390	950	216%
Children (0-15 years)	2,730	2,750	2,730	2,750	2,720	2,730	0	0%
Working ages ¹	9,610	9,880	10,400	10,730	11,150	11,180	1,570	16%
Pensionable ages ²	4,090	4,550	4,760	5,100	5,350	5,850	1,760	43%

Table 2b: Projected population of Loch Lomond and the Trossachs National Park, by age group and age structure, 2008-2033

	2008	2013	2018	2023	2028	2033	Change 2008-2033	
All Ages	14,590	14,400	14,180	13,930	13,600	13,140	-1,450	-10%
0-15	2,220	1,970	1,850	1,840	1,800	1,660	-560	-25%
16-24	1,450	1,350	1,150	940	850	830	-620	-43%
25-29	610	740	760	680	530	450	-160	-26%
30-34	530	590	690	710	630	480	-50	-9%
35-44	1,990	1,510	1,350	1,520	1,640	1,570	-420	-21%
45-54	2,340	2,440	2,240	1,790	1,640	1,810	-530	-23%
55-59	1,220	1,090	1,150	1,190	960	740	-480	-39%
60-64	1,230	1,150	1,030	1,080	1,120	900	-330	-27%
65-74	1,710	1,980	2,090	1,920	1,870	1,970	260	15%
75-84	960	1,120	1,270	1,520	1,630	1,510	550	57%
85+	340	450	590	760	940	1,200	860	253%
Children (0-15 years)	2,220	1,970	1,850	1,840	1,800	1,660	-560	-25%
Working ages ¹	8,760	8,460	8,250	7,900	7,590	6,990	-1,770	-20%
Pensionable ages ²	3,610	3,960	4,080	4,200	4,210	4,490	880	24%

¹Working age is 16-59 for women and 16-64 for men until 2010. Between 2010 and 2020 working age becomes 16-64 for women. Between 2024 and 2026, working age for both men and women becomes 16-65 and changes again to 16-67 by 2046.

² Pensionable age is 65 for men and 60 for women until 2010. Between 2010 and 2020, the pensionable age for women increases to 65. Between 2024 and 2026, the pensionable age for both men and women increases to 66 and changes again to 68 by 2046.

Table 3a: Projected population of Cairngorms National Park, by sex and age, 2008-2033

Age	Sex	2008	2013	2018	2023	2028	2033	Change 2008-2033	
All ages	Persons	16,430	17,180	17,900	18,580	19,220	19,760	3,330	20%
	Males	7,990	8,390	8,750	9,080	9,390	9,650	1,660	21%
	Females	8,440	8,790	9,150	9,500	9,830	10,110	1,670	20%
0-4	Persons	780	750	750	760	760	750	-30	-4%
	Males	420	390	390	390	400	390	-30	-7%
	Females	360	360	360	360	360	360	0	0%
5-9	Persons	870	890	860	860	860	870	0	0%
	Males	460	490	460	460	460	460	0	0%
	Females	410	390	400	400	400	410	0	0%
10-14	Persons	920	930	950	930	920	930	10	1%
	Males	470	490	530	500	490	490	20	4%
	Females	460	440	430	430	430	440	-20	-4%
15-19	Persons	830	860	860	880	860	850	20	2%
	Males	410	430	450	490	460	450	40	10%
	Females	410	430	410	400	400	400	-10	-2%
20-24	Persons	770	740	760	770	790	760	-10	-1%
	Males	450	400	410	430	470	440	-10	-2%
	Females	330	340	350	330	320	320	-10	-3%
25-29	Persons	750	860	830	840	850	870	120	16%
	Males	370	490	440	440	470	510	140	38%
	Females	390	380	390	400	380	370	-20	-5%
30-34	Persons	740	820	930	900	910	920	180	24%
	Males	350	380	500	460	460	490	140	40%
	Females	390	440	430	440	450	440	50	13%
35-39	Persons	1,090	860	950	1,070	1,030	1,040	-50	-5%
	Males	510	390	420	540	500	500	-10	-2%
	Females	580	470	530	520	530	540	-40	-7%
40-44	Persons	1,180	1,230	1,000	1,090	1,220	1,170	-10	-1%
	Males	560	590	470	500	630	580	20	4%
	Females	620	640	520	590	580	590	-30	-5%
45-49	Persons	1,220	1,280	1,340	1,100	1,190	1,320	100	8%
	Males	600	610	660	530	560	700	100	17%
	Females	620	660	680	560	630	620	0	0%
50-54	Persons	1,190	1,330	1,390	1,460	1,210	1,310	120	10%
	Males	560	650	660	700	580	610	50	9%
	Females	630	680	730	750	630	700	70	11%
55-59	Persons	1,310	1,230	1,370	1,430	1,500	1,250	-60	-5%
	Males	630	570	660	670	720	590	-40	-6%
	Females	680	650	710	760	780	660	-20	-3%
60-64	Persons	1,380	1,350	1,270	1,410	1,470	1,550	170	12%
	Males	700	620	570	650	660	710	10	1%
	Females	680	730	700	760	810	830	150	22%
65-69	Persons	980	1,340	1,310	1,250	1,390	1,450	470	48%
	Males	490	670	590	550	630	640	150	31%
	Females	490	670	720	700	750	800	310	63%
70-74	Persons	810	890	1,230	1,220	1,160	1,290	480	59%
	Males	390	450	620	550	510	590	200	51%
	Females	420	440	610	660	650	700	280	67%
75-79	Persons	670	710	790	1,100	1,100	1,060	390	58%
	Males	310	330	390	540	490	460	150	48%
	Females	370	380	400	560	610	600	230	62%
80-84	Persons	510	550	600	680	960	960	450	88%
	Males	200	240	270	320	460	410	210	105%
	Females	310	310	330	360	500	550	240	77%
85-89	Persons	310	370	410	470	550	770	460	148%
	Males	110	140	170	200	250	350	240	218%
	Females	200	230	240	270	300	420	220	110%
90 & over	Persons	130	210	290	380	490	620	490	377%
	Males	30	70	100	150	200	260	230	767%
	Females	100	140	190	240	300	360	260	260%

Table 3b: Projected population of Loch Lomond and the Trossachs National Park, by sex and age, 2008-2033

Age	Sex	2008	2013	2018	2023	2028	2033	Change 2008-2033	
All ages	Persons	14,590	14,400	14,180	13,930	13,600	13,140	-1,450	-10%
	Males	7,030	6,970	6,910	6,840	6,710	6,510	-520	-7%
	Females	7,560	7,420	7,270	7,100	6,890	6,630	-930	-12%
0-4	Persons	590	570	580	580	530	440	-150	-25%
	Males	310	300	310	310	290	240	-70	-23%
	Females	280	260	260	270	240	200	-80	-29%
5-9	Persons	660	590	570	580	580	530	-130	-20%
	Males	340	310	310	320	320	300	-40	-12%
	Females	330	280	260	260	260	240	-90	-27%
10-14	Persons	810	660	580	560	570	580	-230	-28%
	Males	410	350	320	320	330	330	-80	-20%
	Females	400	310	260	240	240	240	-160	-40%
15-19	Persons	860	740	600	510	500	510	-350	-41%
	Males	430	390	330	300	300	310	-120	-28%
	Females	420	360	270	220	200	200	-220	-52%
20-24	Persons	760	770	680	530	460	440	-320	-42%
	Males	400	400	360	310	270	280	-120	-30%
	Females	360	370	320	230	180	160	-200	-56%
25-29	Persons	610	740	760	680	530	450	-160	-26%
	Males	320	390	380	350	290	260	-60	-19%
	Females	290	350	380	330	230	190	-100	-34%
30-34	Persons	530	590	690	710	630	480	-50	-9%
	Males	230	280	320	310	280	220	-10	-4%
	Females	310	310	370	400	350	260	-50	-16%
35-39	Persons	830	600	650	750	780	690	-140	-17%
	Males	380	240	290	330	320	290	-90	-24%
	Females	450	360	360	420	450	400	-50	-11%
40-44	Persons	1,160	920	700	760	860	880	-280	-24%
	Males	550	420	290	350	390	380	-170	-31%
	Females	600	500	410	420	470	510	-90	-15%
45-49	Persons	1,170	1,220	980	760	830	920	-250	-21%
	Males	560	610	480	340	410	450	-110	-20%
	Females	610	610	500	420	420	480	-130	-21%
50-54	Persons	1,170	1,220	1,260	1,030	810	880	-290	-25%
	Males	580	610	660	530	390	460	-120	-21%
	Females	590	610	600	500	420	420	-170	-29%
55-59	Persons	1,220	1,090	1,150	1,190	960	740	-480	-39%
	Males	600	530	570	620	490	360	-240	-40%
	Females	630	560	580	570	470	390	-240	-38%
60-64	Persons	1,230	1,150	1,030	1,080	1,120	900	-330	-27%
	Males	620	540	480	520	570	450	-170	-27%
	Females	610	610	550	560	560	460	-150	-25%
65-69	Persons	940	1,140	1,060	950	1,010	1,050	110	12%
	Males	440	590	510	460	500	540	100	23%
	Females	500	550	550	490	510	500	0	0%
70-74	Persons	770	840	1,030	960	870	920	150	19%
	Males	380	380	530	460	410	450	70	18%
	Females	400	450	500	510	450	470	70	18%
75-79	Persons	580	670	740	910	860	780	200	34%
	Males	260	320	330	470	410	370	110	42%
	Females	320	350	400	450	460	410	90	28%
80-84	Persons	370	460	540	610	770	730	360	97%
	Males	140	200	250	270	390	340	200	143%
	Females	230	260	280	340	380	390	160	70%
85-89	Persons	240	270	330	410	480	610	370	154%
	Males	70	90	130	180	200	290	220	314%
	Females	170	180	200	230	280	310	140	82%
90 & over	Persons	100	190	260	350	460	590	490	490%
	Males	30	30	50	90	140	190	160	533%
	Females	70	150	200	260	320	400	330	471%

Table 4a: Projected components of population change for Cairngorms National Park, 2008-2033

	2008-2013	2013-2018	2018-2023	2023-2028	2028-2033
Population at start	16,430	17,180	17,900	18,580	19,220
Births	720	710	720	720	720
Deaths	970	990	1,030	1,090	1,170
Natural change ¹	-250	-280	-310	-370	-460
Migration	1,000	1,000	1,000	1,000	1,000
Population at end	17,180	17,900	18,580	19,220	19,760
Total change	750	720	690	630	540

Table 4b: Projected components of population change for Loch Lomond and the Trossachs National Park, 2008-2033

	2008-2013	2013-2018	2018-2023	2023-2028	2028-2033
Population at start	14,590	14,400	14,180	13,930	13,600
Births	590	590	590	540	450
Deaths	780	810	830	870	910
Natural change ¹	-190	-220	-240	-330	-460
Migration	0	0	0	0	0
Population at end	14,400	14,180	13,930	13,600	13,140
Total change	-190	-220	-240	-330	-460

¹Natural change = Births – Deaths

Table 5: Estimated and projected total population of SDP areas, 2001-2033

Estimated total population of SDP areas, 2001-2008

SDP area	2001	2002	2003	2004	2005	2006	2007	2008
Glasgow & Clyde Valley	1,747,700	1,743,640	1,742,470	1,744,590	1,745,160	1,746,890	1,749,650	1,752,950
Aberdeen City & Shire	435,720	433,440	433,140	434,170	436,250	440,020	445,280	448,690
SESplan	1,161,310	1,162,270	1,164,110	1,174,900	1,181,730	1,192,300	1,203,380	1,213,910
TAYplan	463,380	462,590	463,000	464,620	467,080	469,880	472,500	475,190

Projected total population of SDP areas, selected years

SDP area	2013	2018	2023	2028	2033	Change 2008-2033	
Glasgow & Clyde Valley	1,764,310	1,769,910	1,771,830	1,766,550	1,754,130	1,180	0%
Aberdeen City & Shire	463,990	477,710	490,950	502,390	511,630	62,940	14%
SESplan	1,260,230	1,304,580	1,348,300	1,388,290	1,423,490	209,580	17%
TAYplan	485,700	494,190	502,380	508,770	512,920	37,730	8%

Table 6a: Projected population of Glasgow & Clyde Valley SDP area, by age group and age structure, 2008-2033

	2008	2013	2018	2023	2028	2033	Change 2008-2033	
All Ages	1,752,950	1,764,310	1,769,910	1,771,830	1,766,550	1,754,130	1,180	0%
0-15	314,690	310,460	313,520	311,770	299,560	286,420	-28,270	-9%
16-24	220,050	205,310	185,790	178,400	186,240	186,680	-33,370	-15%
25-29	125,180	132,890	124,570	113,510	103,580	108,190	-16,990	-14%
30-34	106,950	124,760	131,030	122,750	111,770	101,910	-5,040	-5%
35-44	262,240	226,240	221,960	244,750	242,720	223,800	-38,440	-15%
45-54	253,040	265,480	249,520	213,800	209,980	232,420	-20,620	-8%
55-59	102,910	113,620	126,360	126,100	111,650	92,020	-10,890	-11%
60-64	95,840	96,440	107,080	119,610	119,660	105,910	10,070	11%
65-74	147,940	155,740	165,830	178,220	200,590	212,610	64,670	44%
75-84	93,760	99,200	102,900	112,860	122,700	134,790	41,030	44%
85+	30,340	34,190	41,350	50,070	58,100	69,390	39,050	129%
Children (0-15 years)	314,690	310,460	313,520	311,770	299,560	286,420	-28,270	-9%
Working ages ¹	1,116,390	1,131,580	1,137,450	1,118,920	1,109,030	1,073,250	-43,140	-4%
Pensionable ages ²	321,860	322,280	318,930	341,150	357,960	394,460	72,600	23%

Table 6b: Projected population of Aberdeen City & Shire SDP area, by age group and age structure, 2008-2033

	2008	2013	2018	2023	2028	2033	Change 2008-2033	
All Ages	448,690	463,990	477,710	490,950	502,390	511,630	62,940	14%
0-15	78,980	79,180	81,450	83,030	82,680	82,200	3,220	4%
16-24	52,850	51,380	47,980	47,520	50,030	50,590	-2,260	-4%
25-29	29,650	31,750	31,010	28,990	27,510	29,250	-400	-1%
30-34	27,230	30,870	32,630	31,900	29,900	28,430	1,200	4%
35-44	67,930	61,780	60,690	65,810	66,850	64,180	-3,750	-6%
45-54	66,520	69,490	68,660	62,520	61,500	66,570	50	0%
55-59	29,300	31,700	33,740	34,700	33,070	28,800	-500	-2%
60-64	26,550	28,330	30,720	32,770	33,760	32,230	5,680	21%
65-74	37,260	43,380	49,910	54,160	58,570	61,630	24,370	65%
75-84	24,070	26,170	28,750	34,570	40,280	44,240	20,170	84%
85+	8,370	9,950	12,170	14,970	18,240	23,520	15,150	181%
Children (0-15 years)	78,980	79,180	81,450	83,030	82,680	82,200	3,220	4%
Working ages ¹	286,770	295,820	302,930	304,220	309,200	306,420	19,650	7%
Pensionable ages ²	82,940	88,990	93,340	103,700	110,510	123,010	40,070	48%

¹ Working age is 16-59 for women and 16-64 for men until 2010. Between 2010 and 2020 working age becomes 16-64 for women. Between 2024 and 2026, working age for both men and women becomes 16-65 and changes again to 16-67 by 2046.

² Pensionable age is 65 for men and 60 for women until 2010. Between 2010 and 2020, the pensionable age for women increases to 65. Between 2024 and 2026, the pensionable age for both men and women increases to 66 and changes again to 68 by 2046.

Table 6c: Projected population of SESplan SDP area, by age group and age structure, 2008-2033

	2008	2013	2018	2023	2028	2033	Change 2008-2033	
All Ages	1,213,910	1,260,230	1,304,580	1,348,300	1,388,290	1,423,490	209,580	17%
0-15	212,530	215,630	224,020	230,930	231,400	231,490	18,960	9%
16-24	148,390	146,840	139,090	137,860	146,740	150,240	1,850	1%
25-29	88,170	93,690	93,870	89,640	85,440	90,830	2,660	3%
30-34	77,940	90,780	95,600	95,740	91,540	87,340	9,400	12%
35-44	184,370	167,850	169,550	186,650	191,610	187,650	3,280	2%
45-54	168,890	183,730	182,100	165,700	167,630	184,550	15,660	9%
55-59	73,310	77,460	87,700	92,210	86,530	76,530	3,220	4%
60-64	70,670	70,760	75,000	85,090	89,630	84,270	13,600	19%
65-74	101,180	116,070	128,390	133,660	147,920	161,950	60,770	60%
75-84	65,010	70,370	77,050	91,260	102,220	108,120	43,110	66%
85+	23,440	27,050	32,220	39,550	47,630	60,510	37,070	158%
Children (0-15 years)	212,530	215,630	224,020	230,930	231,400	231,490	18,960	9%
Working ages ¹	775,320	806,150	836,840	852,890	876,430	879,050	103,730	13%
Pensionable ages ²	226,060	238,440	243,730	264,480	280,460	312,940	86,880	38%

Table 6d: Projected population of TAYplan SDP area, by age group and age structure, 2008-2033

	2008	2013	2018	2023	2028	2033	Change 2008-2033	
All Ages	475,190	485,700	494,190	502,380	508,770	512,920	37,730	8%
0-15	80,410	79,980	82,040	83,870	83,170	81,750	1,340	2%
16-24	60,670	57,250	53,350	51,520	53,840	55,010	-5,660	-9%
25-29	28,000	33,570	30,640	28,840	26,420	27,560	-440	-2%
30-34	22,900	27,560	32,680	29,790	28,000	25,620	2,720	12%
35-44	64,330	54,500	52,670	62,130	64,320	59,700	-4,630	-7%
45-54	66,600	70,360	66,490	56,550	54,850	64,210	-2,390	-4%
55-59	30,970	31,520	35,140	35,180	31,540	25,630	-5,340	-17%
60-64	31,410	30,540	31,120	34,720	34,820	31,330	-80	0%
65-74	47,100	53,150	57,260	57,500	61,810	65,410	18,310	39%
75-84	31,290	33,560	36,540	42,480	46,300	47,160	15,870	51%
85+	11,510	13,720	16,260	19,790	23,710	29,540	18,030	157%
Children (0-15 years)	80,410	79,980	82,040	83,870	83,170	81,750	1,340	2%
Working ages ¹	288,770	294,630	299,450	298,730	300,970	295,670	6,900	2%
Pensionable ages ²	106,010	111,100	112,690	119,770	124,630	135,500	29,490	28%

¹Working age is 16-59 for women and 16-64 for men until 2010. Between 2010 and 2020 working age becomes 16-64 for women. Between 2024 and 2026, working age for both men and women becomes 16-65 and changes again to 16-67 by 2046.

²Pensionable age is 65 for men and 60 for women until 2010. Between 2010 and 2020, the pensionable age for women increases to 65. Between 2024 and 2026, the pensionable age for both men and women increases to 66 and changes again to 68 by 2046.

Table 7a: Projected population of Glasgow & Clyde Valley SDP area, by sex and age, 2008-2033

Age	Sex	2008	2013	2018	2023	2028	2033	Change 2008-2033	
All ages	Persons	1,752,950	1,764,310	1,769,910	1,771,830	1,766,550	1,754,130	1,180	0%
	Males	841,450	849,910	855,030	857,720	856,240	850,840	9,390	1%
	Females	911,490	914,410	914,880	914,110	910,310	903,290	-8,200	-1%
0-4	Persons	99,050	101,830	99,210	95,440	90,180	86,450	-12,600	-13%
	Males	50,810	52,090	50,740	48,820	46,130	44,220	-6,590	-13%
	Females	48,240	49,740	48,470	46,630	44,050	42,230	-6,010	-12%
5-9	Persons	92,900	97,580	100,240	97,620	93,870	88,600	-4,300	-5%
	Males	47,200	49,880	51,150	49,800	47,890	45,200	-2,000	-4%
	Females	45,700	47,700	49,090	47,820	45,980	43,400	-2,300	-5%
10-14	Persons	101,310	91,530	96,110	98,760	96,150	92,410	-8,900	-9%
	Males	52,020	46,570	49,220	50,490	49,140	47,230	-4,790	-9%
	Females	49,300	44,950	46,900	48,280	47,010	45,170	-4,130	-8%
15-19	Persons	112,990	102,840	92,840	97,420	100,080	97,470	-15,520	-14%
	Males	58,070	52,680	47,170	49,810	51,080	49,740	-8,330	-14%
	Females	54,920	50,160	45,670	47,610	49,000	47,730	-7,190	-13%
20-24	Persons	128,490	121,990	110,910	100,920	105,520	108,170	-20,320	-16%
	Males	65,200	61,890	56,160	50,680	53,330	54,590	-10,610	-16%
	Females	63,290	60,090	54,750	50,240	52,200	53,580	-9,710	-15%
25-29	Persons	125,180	132,890	124,570	113,510	103,580	108,190	-16,990	-14%
	Males	63,500	67,760	63,680	57,980	52,530	55,180	-8,320	-13%
	Females	61,680	65,130	60,890	55,540	51,050	53,010	-8,670	-14%
30-34	Persons	106,950	124,760	131,030	122,750	111,770	101,910	-5,040	-5%
	Males	52,690	63,480	67,050	63,020	57,380	51,980	-710	-1%
	Females	54,270	61,270	63,980	59,730	54,390	49,930	-4,340	-8%
35-39	Persons	124,840	104,210	120,980	127,190	118,990	108,120	-16,720	-13%
	Males	59,520	50,950	61,150	64,670	60,700	55,140	-4,380	-7%
	Females	65,320	53,260	59,830	62,520	58,300	52,980	-12,340	-19%
40-44	Persons	137,410	122,030	100,970	117,550	123,730	115,680	-21,730	-16%
	Males	64,800	57,960	49,150	59,200	62,680	58,790	-6,010	-9%
	Females	72,610	64,070	51,820	58,350	61,050	56,890	-15,720	-22%
45-49	Persons	134,750	134,230	118,780	98,060	114,500	120,670	-14,080	-10%
	Males	64,240	62,790	55,900	47,270	57,210	60,660	-3,580	-6%
	Females	70,500	71,440	62,890	50,790	57,290	60,010	-10,490	-15%
50-54	Persons	118,290	131,250	130,740	115,740	95,480	111,750	-6,540	-6%
	Males	56,890	62,240	60,840	54,210	45,840	55,640	-1,250	-2%
	Females	61,400	69,010	69,900	61,530	49,640	56,110	-5,290	-9%
55-59	Persons	102,910	113,620	126,360	126,100	111,650	92,020	-10,890	-11%
	Males	50,230	54,180	59,450	58,220	51,910	43,890	-6,340	-13%
	Females	52,670	59,440	66,910	67,880	59,740	48,130	-4,540	-9%
60-64	Persons	95,840	96,440	107,080	119,610	119,660	105,910	10,070	11%
	Males	46,020	46,390	50,360	55,520	54,500	48,570	2,550	6%
	Females	49,820	50,050	56,720	64,090	65,160	57,340	7,520	15%
65-69	Persons	78,060	87,030	88,290	98,800	110,970	111,370	33,310	43%
	Males	35,620	40,940	41,730	45,670	50,660	49,880	14,260	40%
	Females	42,440	46,090	46,550	53,120	60,310	61,490	19,050	45%
70-74	Persons	69,880	68,710	77,540	79,420	89,610	101,230	31,350	45%
	Males	30,150	30,450	35,600	36,740	40,570	45,280	15,130	50%
	Females	39,730	38,260	41,950	42,680	49,050	55,950	16,220	41%
75-79	Persons	56,450	57,660	58,080	66,450	68,750	78,370	21,920	39%
	Males	22,530	23,730	24,760	29,500	30,830	34,400	11,870	53%
	Females	33,920	33,930	33,320	36,950	37,920	43,970	10,050	30%
80-84	Persons	37,310	41,540	44,820	46,400	53,950	56,420	19,110	51%
	Males	13,500	15,490	17,490	18,870	22,970	24,300	10,800	80%
	Females	23,810	26,050	27,340	27,530	30,980	32,120	8,310	35%
85-89	Persons	21,080	22,810	27,250	31,380	33,540	39,810	18,730	89%
	Males	6,310	7,510	9,430	11,510	12,870	16,060	9,750	155%
	Females	14,770	15,300	17,820	19,880	20,660	23,750	8,980	61%
90 & over	Persons	9,260	11,380	14,100	18,690	24,560	29,580	20,320	219%
	Males	2,150	2,910	4,030	5,750	8,040	10,090	7,940	369%
	Females	7,110	8,470	10,080	12,940	16,520	19,490	12,380	174%

Table 7b: Projected population of Aberdeen City & Shire SDP area, by sex and age, 2008-2033

Age	Sex	2008	2013	2018	2023	2028	2033	Change 2008-2033	
All ages	Persons	448,690	463,990	477,710	490,950	502,390	511,630	62,940	14%
	Males	222,260	230,400	237,410	243,940	249,360	253,550	31,290	14%
	Females	226,430	233,580	240,300	247,010	253,030	258,080	31,650	14%
0-4	Persons	24,700	25,180	25,340	25,550	25,120	24,750	50	0%
	Males	12,680	12,850	12,930	13,040	12,820	12,630	-50	0%
	Females	12,020	12,330	12,410	12,510	12,300	12,120	100	1%
5-9	Persons	23,540	25,300	25,770	25,930	26,140	25,720	2,180	9%
	Males	12,120	12,950	13,110	13,190	13,300	13,080	960	8%
	Females	11,420	12,350	12,660	12,740	12,840	12,640	1,220	11%
10-14	Persons	25,330	23,840	25,590	26,070	26,230	26,450	1,120	4%
	Males	13,190	12,260	13,090	13,250	13,320	13,440	250	2%
	Females	12,140	11,580	12,510	12,820	12,910	13,010	870	7%
15-19	Persons	27,650	25,890	24,390	26,140	26,620	26,780	-870	-3%
	Males	13,880	13,280	12,360	13,180	13,350	13,430	-450	-3%
	Females	13,770	12,600	12,030	12,960	13,270	13,360	-410	-3%
20-24	Persons	30,610	30,360	28,340	26,850	28,600	29,100	-1,510	-5%
	Males	15,220	15,050	14,310	13,390	14,220	14,400	-820	-5%
	Females	15,390	15,310	14,030	13,460	14,380	14,700	-690	-4%
25-29	Persons	29,650	31,750	31,010	28,990	27,510	29,250	-400	-1%
	Males	15,780	16,030	15,580	14,850	13,930	14,750	-1,030	-7%
	Females	13,870	15,720	15,430	14,150	13,580	14,500	630	5%
30-34	Persons	27,230	30,870	32,630	31,900	29,900	28,430	1,200	4%
	Males	14,000	16,380	16,430	15,990	15,260	14,350	350	3%
	Females	13,230	14,490	16,200	15,920	14,640	14,080	850	6%
35-39	Persons	32,740	28,320	31,730	33,480	32,770	30,780	-1,960	-6%
	Males	16,120	14,500	16,740	16,800	16,360	15,650	-470	-3%
	Females	16,620	13,830	14,990	16,680	16,410	15,130	-1,490	-9%
40-44	Persons	35,190	33,460	28,960	32,330	34,080	33,400	-1,790	-5%
	Males	17,440	16,490	14,810	17,030	17,090	16,660	-780	-4%
	Females	17,760	16,970	14,150	15,300	16,990	16,730	-1,030	-6%
45-49	Persons	34,370	35,290	33,540	29,090	32,440	34,200	-170	0%
	Males	17,100	17,470	16,510	14,850	17,050	17,120	20	0%
	Females	17,270	17,820	17,030	14,240	15,390	17,070	-200	-1%
50-54	Persons	32,140	34,200	35,130	33,420	29,060	32,370	230	1%
	Males	16,300	17,040	17,430	16,490	14,870	17,050	750	5%
	Females	15,840	17,150	17,700	16,930	14,180	15,320	-520	-3%
55-59	Persons	29,300	31,700	33,740	34,700	33,070	28,800	-500	-2%
	Males	14,830	16,020	16,750	17,160	16,260	14,700	-130	-1%
	Females	14,470	15,670	16,990	17,540	16,810	14,100	-370	-3%
60-64	Persons	26,550	28,330	30,720	32,770	33,760	32,230	5,680	21%
	Males	13,300	14,180	15,370	16,100	16,530	15,690	2,390	18%
	Females	13,250	14,150	15,350	16,670	17,230	16,530	3,280	25%
65-69	Persons	20,050	24,970	26,800	29,180	31,240	32,260	12,210	61%
	Males	9,630	12,330	13,240	14,420	15,170	15,620	5,990	62%
	Females	10,420	12,650	13,550	14,760	16,070	16,640	6,220	60%
70-74	Persons	17,210	18,410	23,110	24,980	27,330	29,370	12,160	71%
	Males	8,130	8,700	11,260	12,190	13,350	14,100	5,970	73%
	Females	9,090	9,710	11,850	12,790	13,980	15,270	6,180	68%
75-79	Persons	14,170	15,070	16,430	20,810	22,620	24,920	10,750	76%
	Males	6,120	6,910	7,570	9,920	10,820	11,940	5,820	95%
	Females	8,040	8,160	8,850	10,890	11,800	12,990	4,950	62%
80-84	Persons	9,910	11,110	12,330	13,760	17,660	19,320	9,410	95%
	Males	3,860	4,580	5,440	6,130	8,170	8,960	5,100	132%
	Females	6,040	6,530	6,880	7,630	9,490	10,350	4,310	71%
85-89	Persons	5,740	6,470	7,710	9,050	10,420	13,600	7,860	137%
	Males	1,890	2,360	3,020	3,820	4,450	6,050	4,160	220%
	Females	3,840	4,100	4,690	5,230	5,970	7,550	3,710	97%
90 & over	Persons	2,630	3,480	4,470	5,920	7,820	9,920	7,290	277%
	Males	660	1,010	1,470	2,130	3,030	3,940	3,280	497%
	Females	1,970	2,470	3,000	3,800	4,790	5,980	4,010	204%

Table 7c: Projected population of SESplan SDP area, by sex and age, 2008-2033

Age	Sex	2008	2013	2018	2023	2028	2033	Change 2008-2033	
All ages	Persons	1,213,910	1,260,230	1,304,580	1,348,300	1,388,290	1,423,490	209,580	17%
	Males	585,970	610,840	633,730	655,770	675,500	692,660	106,690	18%
	Females	627,940	649,400	670,850	692,540	712,790	730,820	102,880	16%
0-4	Persons	67,680	70,630	71,430	72,160	71,620	71,200	3,520	5%
	Males	34,720	36,160	36,550	36,920	36,650	36,430	1,710	5%
	Females	32,960	34,470	34,870	35,240	34,970	34,770	1,810	5%
5-9	Persons	62,860	68,240	71,220	72,030	72,760	72,230	9,370	15%
	Males	32,060	34,960	36,390	36,780	37,150	36,880	4,820	15%
	Females	30,800	33,290	34,840	35,250	35,610	35,350	4,550	15%
10-14	Persons	67,630	63,470	68,810	71,800	72,600	73,330	5,700	8%
	Males	34,350	32,370	35,200	36,630	37,030	37,390	3,040	9%
	Females	33,280	31,100	33,610	35,160	35,570	35,940	2,660	8%
15-19	Persons	75,260	71,310	67,110	72,440	75,430	76,230	970	1%
	Males	38,300	35,980	33,960	36,800	38,230	38,620	320	1%
	Females	36,960	35,330	33,150	35,640	37,200	37,600	640	2%
20-24	Persons	87,500	88,820	84,550	80,370	85,730	88,740	1,240	1%
	Males	43,150	44,380	41,880	39,870	42,720	44,160	1,010	2%
	Females	44,350	44,440	42,670	40,500	43,020	44,580	230	1%
25-29	Persons	88,170	93,690	93,870	89,640	85,440	90,830	2,660	3%
	Males	43,670	46,640	47,230	44,750	42,750	45,600	1,930	4%
	Females	44,500	47,050	46,630	44,890	42,690	45,230	730	2%
30-34	Persons	77,940	90,780	95,600	95,740	91,540	87,340	9,400	12%
	Males	38,250	45,080	47,610	48,170	45,710	43,720	5,470	14%
	Females	39,690	45,700	47,990	47,570	45,830	43,620	3,930	10%
35-39	Persons	89,210	78,700	91,070	95,880	96,050	91,890	2,680	3%
	Males	43,330	38,630	45,160	47,670	48,250	45,820	2,490	6%
	Females	45,880	40,070	45,910	48,210	47,790	46,070	190	0%
40-44	Persons	95,160	89,150	78,480	90,770	95,560	95,770	610	1%
	Males	46,000	43,220	38,390	44,850	47,350	47,960	1,960	4%
	Females	49,160	45,930	40,090	45,920	48,220	47,810	-1,350	-3%
45-49	Persons	90,010	94,480	88,400	77,890	90,110	94,890	4,880	5%
	Males	43,550	45,430	42,600	37,870	44,270	46,760	3,210	7%
	Females	46,460	49,040	45,800	40,020	45,850	48,130	1,670	4%
50-54	Persons	78,880	89,250	93,700	87,810	77,520	89,650	10,770	14%
	Males	38,640	43,120	44,960	42,230	37,620	43,960	5,320	14%
	Females	40,240	46,130	48,750	45,580	39,900	45,700	5,460	14%
55-59	Persons	73,310	77,460	87,700	92,210	86,530	76,530	3,220	4%
	Males	35,580	37,720	42,110	43,990	41,390	36,940	1,360	4%
	Females	37,740	39,740	45,580	48,220	45,150	39,590	1,850	5%
60-64	Persons	70,670	70,760	75,000	85,090	89,630	84,270	13,600	19%
	Males	34,250	33,890	36,070	40,410	42,300	39,870	5,620	16%
	Females	36,430	36,860	38,920	44,680	47,330	44,390	7,960	22%
65-69	Persons	54,110	66,530	67,020	71,370	81,200	85,760	31,650	58%
	Males	25,350	31,790	31,720	33,930	38,140	40,050	14,700	58%
	Females	28,770	34,740	35,300	37,430	43,070	45,710	16,940	59%
70-74	Persons	47,070	49,550	61,380	62,300	66,710	76,200	29,130	62%
	Males	21,370	22,760	28,870	29,060	31,290	35,310	13,940	65%
	Females	25,710	26,780	32,510	33,240	35,420	40,880	15,170	59%
75-79	Persons	37,970	40,920	43,880	54,870	56,140	60,550	22,580	59%
	Males	16,060	18,010	19,660	25,250	25,620	27,830	11,770	73%
	Females	21,910	22,910	24,220	29,630	30,510	32,720	10,810	49%
80-84	Persons	27,040	29,440	33,170	36,390	46,080	47,570	20,530	76%
	Males	10,370	11,810	14,010	15,710	20,500	21,010	10,640	103%
	Females	16,670	17,630	19,160	20,670	25,580	26,560	9,890	59%
85-89	Persons	16,140	17,450	20,230	24,080	27,190	35,050	18,910	117%
	Males	5,240	6,190	7,620	9,640	11,160	14,880	9,640	184%
	Females	10,900	11,260	12,600	14,440	16,030	20,170	9,270	85%
90 & over	Persons	7,300	9,600	11,990	15,470	20,440	25,470	18,170	249%
	Males	1,750	2,690	3,750	5,230	7,370	9,470	7,720	441%
	Females	5,550	6,920	8,240	10,240	13,070	15,990	10,440	188%

Table 7d: Projected population of TAYplan SDP area, by sex and age, 2008-2033

Age	Sex	2008	2013	2018	2023	2028	2033	Change 2008-2033	
All ages	Persons	475,190	485,700	494,190	502,380	508,770	512,920	37,730	8%
	Males	228,990	235,100	239,910	244,300	247,580	249,650	20,660	9%
	Females	246,200	250,610	254,280	258,070	261,190	263,270	17,070	7%
0-4	Persons	24,210	25,260	25,540	25,560	24,730	24,030	-180	-1%
	Males	12,380	12,930	13,080	13,080	12,650	12,290	-90	-1%
	Females	11,830	12,330	12,470	12,470	12,070	11,740	-90	-1%
5-9	Persons	23,720	24,990	25,950	26,230	26,250	25,410	1,690	7%
	Males	12,170	12,810	13,320	13,460	13,470	13,040	870	7%
	Females	11,550	12,180	12,640	12,770	12,780	12,380	830	7%
10-14	Persons	26,750	24,350	25,540	26,520	26,800	26,820	70	0%
	Males	13,650	12,540	13,140	13,660	13,800	13,810	160	1%
	Females	13,100	11,820	12,400	12,870	13,010	13,010	-90	-1%
15-19	Persons	30,330	28,920	26,430	27,620	28,600	28,890	-1,440	-5%
	Males	15,380	14,570	13,420	14,010	14,540	14,680	-700	-5%
	Females	14,950	14,350	13,010	13,600	14,060	14,210	-740	-5%
20-24	Persons	36,070	33,700	31,920	29,460	30,620	31,610	-4,460	-12%
	Males	18,350	17,000	15,990	14,860	15,440	15,970	-2,380	-13%
	Females	17,730	16,700	15,930	14,600	15,180	15,640	-2,090	-12%
25-29	Persons	28,000	33,570	30,640	28,840	26,420	27,560	-440	-2%
	Males	14,650	17,350	15,720	14,700	13,580	14,160	-490	-3%
	Females	13,360	16,220	14,920	14,140	12,840	13,400	40	0%
30-34	Persons	22,900	27,560	32,680	29,790	28,000	25,620	2,720	12%
	Males	11,160	14,280	16,730	15,120	14,120	13,010	1,850	17%
	Females	11,740	13,290	15,950	14,670	13,890	12,610	870	7%
35-39	Persons	29,780	23,690	28,100	33,180	30,300	28,550	-1,230	-4%
	Males	14,020	11,390	14,370	16,790	15,200	14,200	180	1%
	Females	15,760	12,290	13,730	16,390	15,100	14,340	-1,420	-9%
40-44	Persons	34,560	30,820	24,570	28,950	34,020	31,150	-3,410	-10%
	Males	16,360	14,470	11,740	14,680	17,090	15,520	-840	-5%
	Females	18,190	16,340	12,830	14,270	16,930	15,630	-2,560	-14%
45-49	Persons	35,050	35,080	31,240	25,060	29,410	34,460	-590	-2%
	Males	16,790	16,550	14,600	11,920	14,820	17,210	420	3%
	Females	18,260	18,530	16,640	13,140	14,590	17,250	-1,010	-6%
50-54	Persons	31,550	35,280	35,260	31,490	25,430	29,740	-1,810	-6%
	Males	15,300	16,870	16,630	14,720	12,100	14,970	-330	-2%
	Females	16,250	18,400	18,630	16,770	13,330	14,770	-1,480	-9%
55-59	Persons	30,970	31,520	35,140	35,180	31,540	25,630	-5,340	-17%
	Males	15,010	15,230	16,780	16,560	14,730	12,190	-2,820	-19%
	Females	15,950	16,280	18,370	18,620	16,810	13,440	-2,510	-16%
60-64	Persons	31,410	30,540	31,120	34,720	34,820	31,330	-80	0%
	Males	15,300	14,650	14,900	16,430	16,250	14,510	-790	-5%
	Females	16,110	15,890	16,230	18,290	18,570	16,820	710	4%
65-69	Persons	25,010	30,020	29,340	30,020	33,540	33,720	8,710	35%
	Males	11,950	14,500	13,970	14,280	15,780	15,650	3,700	31%
	Females	13,060	15,520	15,370	15,740	17,770	18,070	5,010	38%
70-74	Persons	22,090	23,120	27,920	27,480	28,260	31,690	9,600	43%
	Males	10,130	10,880	13,310	12,930	13,290	14,740	4,610	46%
	Females	11,960	12,240	14,610	14,550	14,970	16,950	4,990	42%
75-79	Persons	18,070	19,400	20,660	25,170	24,960	25,840	7,770	43%
	Males	7,750	8,670	9,500	11,760	11,520	11,930	4,180	54%
	Females	10,320	10,730	11,150	13,410	13,430	13,910	3,590	35%
80-84	Persons	13,210	14,170	15,880	17,310	21,340	21,320	8,110	61%
	Males	5,040	5,810	6,850	7,710	9,680	9,560	4,520	90%
	Females	8,170	8,350	9,030	9,590	11,660	11,760	3,590	44%
85-89	Persons	7,830	8,740	9,920	11,750	13,170	16,490	8,660	111%
	Males	2,640	3,110	3,850	4,820	5,610	7,150	4,510	171%
	Females	5,190	5,630	6,070	6,930	7,560	9,330	4,140	80%
90 & over	Persons	3,680	4,990	6,340	8,040	10,540	13,060	9,380	255%
	Males	950	1,470	2,030	2,810	3,910	5,040	4,090	431%
	Females	2,730	3,510	4,310	5,230	6,620	8,020	5,290	194%

Table 8a: Projected components of population change for Glasgow & Clyde Valley SDP area, 2008-2033

	2008-2013	2013-2018	2018-2023	2023-2028	2028-2033
Population at start	1,752,950	1,764,310	1,769,910	1,771,830	1,766,550
Births	103,200	100,660	96,860	91,560	87,780
Deaths	93,200	88,900	88,460	90,370	93,730
Natural change ¹	9,990	11,760	8,400	1,190	-5,950
Migration	1,370	-6,170	-6,470	-6,470	-6,470
Population at end	1,764,310	1,769,910	1,771,830	1,766,550	1,754,130
Total change	11,370	5,590	1,920	-5,280	-12,420

Table 8b: Projected components of population change for Aberdeen City & Shire SDP area, 2008-2033

	2008-2013	2013-2018	2018-2023	2023-2028	2028-2033
Population at start	448,690	463,990	477,710	490,950	502,390
Births	24,870	25,050	25,250	24,830	24,450
Deaths	20,470	20,470	21,160	22,540	24,360
Natural change ¹	4,400	4,580	4,090	2,290	80
Migration	10,890	9,150	9,140	9,150	9,160
Population at end	463,990	477,710	490,950	502,390	511,630
Total change	15,290	13,720	13,240	11,440	9,240

Table 8c: Projected components of population change for SESplan SDP area, 2008-2033

	2008-2013	2013-2018	2018-2023	2023-2028	2028-2033
Population at start	1,213,910	1,260,230	1,304,580	1,348,300	1,388,290
Births	70,660	71,460	72,170	71,620	71,180
Deaths	57,080	56,520	57,850	61,040	65,390
Natural change ¹	13,580	14,940	14,320	10,590	5,790
Migration	32,740	29,410	29,400	29,400	29,410
Population at end	1,260,230	1,304,580	1,348,300	1,388,290	1,423,490
Total change	46,320	44,350	43,720	39,980	35,200

Table 8d: Projected components of population change for TAYplan SDP area, 2008-2033

	2008-2013	2013-2018	2018-2023	2023-2028	2028-2033
Population at start	475,190	485,700	494,190	502,380	508,770
Births	24,910	25,230	25,240	24,400	23,700
Deaths	25,760	25,390	25,650	26,610	28,140
Natural change ¹	-850	-150	-410	-2,210	-4,440
Migration	11,360	8,640	8,600	8,600	8,590
Population at end	485,700	494,190	502,380	508,770	512,920
Total change	10,510	8,490	8,190	6,390	4,150

¹Natural change = Births – Deaths

Annex A - Details of the data zones that have been used to calculate the projected population of the National Parks

Cairngorms National Park	Loch Lomond and the Trossachs National Park
S01000312	S01000785
S01000303	S01000796
S01004233	S01000800
S01000316	S01000804
S01000360	S01006081
S01003743	S01006083
S01003747	S01006150
S01003748	S01006163
S01003749	S01006168
S01003750	S01006170
S01003751	S01006171
S01003772	S01006172
S01003755	S01006173
S01003756	S01006174
S01003759	S01006175
S01003760	S01006292
S01003764	S01006293
S01003766	S01006294
S01003767	
S01003771	
S01000301	
S01003754	

More information about each data zone can be found at:

<http://www.sns.gov.uk/>

Annex B - Details of the data zones that have been used to calculate the projected population of the SDP areas

In [Section 1](#), there is a description of SDP boundaries. In essence SDP areas are aggregates of local authority areas, excluding the areas of the National Parks. There are several data zones in Aberdeenshire and West Dunbartonshire that overlap the two National Parks. These data zones are excluded from the SDP areas. Fife is split into two parts with the north part of Fife included in TAYplan SDP area and the south part included in SESplan SDP area. Further information can be found in [Section 4](#).

Details of these data zones are given here:

Data zones in Aberdeenshire that are also in Cairngorms National Park, and so are excluded from the projections for the Aberdeen City & Shire SDP area

S01000301
S01000303
S01000312
S01000316
S01000360

Data zones in West Dunbartonshire that are also in Loch Lomond and the Trossachs National Park, and so are excluded from the projections for the Glasgow & Clyde Valley SDP area

S01006292
S01006293
S01006294

Data zones in Fife that are part of TAYplan SDP area for the purpose of the projections

S01002851	S01002933	S01002948	S01002958	S01002968	S01002978
S01002888	S01002937	S01002949	S01002959	S01002969	S01002979
S01002902	S01002938	S01002950	S01002960	S01002970	S01002980
S01002917	S01002940	S01002951	S01002961	S01002971	S01002981
S01002918	S01002941	S01002952	S01002962	S01002972	S01002982
S01002920	S01002942	S01002953	S01002963	S01002973	S01002983
S01002921	S01002943	S01002954	S01002964	S01002974	S01002984
S01002923	S01002944	S01002955	S01002965	S01002975	S01002985
S01002924	S01002945	S01002956	S01002966	S01002976	S01002986
S01002928	S01002947	S01002957	S01002967	S01002977	S01002987
S01002988	S01002998	S01003008	S01003018		
S01002989	S01002999	S01003009	S01003019		
S01002990	S01003000	S01003010	S01003020		
S01002991	S01003001	S01003011	S01003021		
S01002992	S01003002	S01003012	S01003022		
S01002993	S01003003	S01003013	S01003023		
S01002994	S01003004	S01003014	S01003024		
S01002995	S01003005	S01003015			
S01002996	S01003006	S01003016			
S01002997	S01003007	S01003017			

Data zones in Fife that are part of SESplan SDP area for the purpose of the projections

S01002572	S01002582	S01002592	S01002602	S01002612	S01002622	S01002632
S01002573	S01002583	S01002593	S01002603	S01002613	S01002623	S01002633
S01002574	S01002584	S01002594	S01002604	S01002614	S01002624	S01002634
S01002575	S01002585	S01002595	S01002605	S01002615	S01002625	S01002635
S01002576	S01002586	S01002596	S01002606	S01002616	S01002626	S01002636
S01002577	S01002587	S01002597	S01002607	S01002617	S01002627	S01002637
S01002578	S01002588	S01002598	S01002608	S01002618	S01002628	S01002638
S01002579	S01002589	S01002599	S01002609	S01002619	S01002629	S01002639
S01002580	S01002590	S01002600	S01002610	S01002620	S01002630	S01002640
S01002581	S01002591	S01002601	S01002611	S01002621	S01002631	S01002641
S01002642	S01002652	S01002662	S01002672	S01002682	S01002692	S01002702
S01002643	S01002653	S01002663	S01002673	S01002683	S01002693	S01002703
S01002644	S01002654	S01002664	S01002674	S01002684	S01002694	S01002704
S01002645	S01002655	S01002665	S01002675	S01002685	S01002695	S01002705
S01002646	S01002656	S01002666	S01002676	S01002686	S01002696	S01002706
S01002647	S01002657	S01002667	S01002677	S01002687	S01002697	S01002707
S01002648	S01002658	S01002668	S01002678	S01002688	S01002698	S01002708
S01002649	S01002659	S01002669	S01002679	S01002689	S01002699	S01002709
S01002650	S01002660	S01002670	S01002680	S01002690	S01002700	S01002710
S01002651	S01002661	S01002671	S01002681	S01002691	S01002701	S01002711
S01002712	S01002722	S01002732	S01002742	S01002752	S01002762	S01002772
S01002713	S01002723	S01002733	S01002743	S01002753	S01002763	S01002773
S01002714	S01002724	S01002734	S01002744	S01002754	S01002764	S01002774
S01002715	S01002725	S01002735	S01002745	S01002755	S01002765	S01002775
S01002716	S01002726	S01002736	S01002746	S01002756	S01002766	S01002776
S01002717	S01002727	S01002737	S01002747	S01002757	S01002767	S01002777
S01002718	S01002728	S01002738	S01002748	S01002758	S01002768	S01002778
S01002719	S01002729	S01002739	S01002749	S01002759	S01002769	S01002779
S01002720	S01002730	S01002740	S01002750	S01002760	S01002770	S01002780
S01002721	S01002731	S01002741	S01002751	S01002761	S01002771	S01002781
S01002782	S01002792	S01002802	S01002812	S01002822	S01002832	S01002842
S01002783	S01002793	S01002803	S01002813	S01002823	S01002833	S01002843
S01002784	S01002794	S01002804	S01002814	S01002824	S01002834	S01002844
S01002785	S01002795	S01002805	S01002815	S01002825	S01002835	S01002845
S01002786	S01002796	S01002806	S01002816	S01002826	S01002836	S01002846
S01002787	S01002797	S01002807	S01002817	S01002827	S01002837	S01002847
S01002788	S01002798	S01002808	S01002818	S01002828	S01002838	S01002848
S01002789	S01002799	S01002809	S01002819	S01002829	S01002839	S01002849
S01002790	S01002800	S01002810	S01002820	S01002830	S01002840	S01002850
S01002791	S01002801	S01002811	S01002821	S01002831	S01002841	S01002852
S01002853	S01002863	S01002873	S01002883	S01002894	S01002905	S01002915
S01002854	S01002864	S01002874	S01002884	S01002895	S01002906	S01002916
S01002855	S01002865	S01002875	S01002885	S01002896	S01002907	S01002919
S01002856	S01002866	S01002876	S01002886	S01002897	S01002908	S01002922
S01002857	S01002867	S01002877	S01002887	S01002898	S01002909	S01002925
S01002858	S01002868	S01002878	S01002889	S01002899	S01002910	S01002926
S01002859	S01002869	S01002879	S01002890	S01002900	S01002911	S01002927
S01002860	S01002870	S01002880	S01002891	S01002901	S01002912	S01002929
S01002861	S01002871	S01002881	S01002892	S01002903	S01002913	S01002930
S01002862	S01002872	S01002882	S01002893	S01002904	S01002914	S01002931
S01002932	S01002939					
S01002934	S01002946					
S01002935						
S01002936						

7 Notes on statistical publications

Enquiries

Enquiries about this publication should be addressed to:

Statistics Customer Services,
General Register Office for Scotland,
Ladywell House,
Edinburgh,
EH12 7TF.

Telephone: (0131) 314 4299

E-mail: customer@gro-scotland.gsi.gov.uk

General Register Office for Scotland

The General Register Office for Scotland (GROS) is the department of the devolved Scottish Administration responsible for the registration of births, marriages, civil partnerships, deaths, divorces and adoptions in Scotland. We are responsible for the Census of Population in Scotland which we use, with other sources of information, to produce population and household statistics. We make available important information for family history. The GROS website is <http://www.gro-scotland.gov.uk>.

Our aim is to provide relevant and reliable information, analysis and advice that meet the needs of government, business and the people of Scotland.

Further detailed statistics produced by GROS are available from the Statistics section on the GROS website (<http://www.gro-scotland.gov.uk/statistics/index.html>). Statistics from the 2001 Census are on Scotland's Census Results On-Line website (<http://www.scrol.gov.uk>) and on the Census section of the GROS website (<http://www.gro-scotland.gov.uk/census/index.html>).

Information about future publications is provided on the GROS website (<http://www.gro-scotland.gov.uk/futurepb.html>). If you would like to receive notification of forthcoming statistical publications, you can register your interest on the Scottish Government ScotStat website at <http://www.scotland.gov.uk/scotstat>.

Comments and complaints

If you are not satisfied with our service, please write to Kirsty MacLachlan, Head of Demography Division, General Register Office for Scotland, Room 1/2/7, Ladywell House, Ladywell Road, Edinburgh EH12 7TF. Telephone: (0131) 314 4242, E-mail: kirsty.maclachlan@gro-scotland.gsi.gov.uk.

We also welcome any comments or suggestion that would help us to improve our standards of service.

Related organisations

Organisation	Contact
<p>The Scottish Government (SG) forms the bulk of the devolved Scottish Administration. The aim of the statistical service in the SG is to provide relevant and reliable statistical information, analysis and advice that meets the needs of government, business and the people of Scotland.</p>	<p>Office of the Chief Statistician, Scottish Government, 1.N04, St Andrew's House, Edinburgh, EH1 3DG.</p> <p>Telephone: (0131) 244 0442</p> <p>E-mail: statistics.enquiries@scotland.gsi.gov.uk</p> <p>Website: http://www.scotland.gov.uk/Statistics</p>
<p>The Office for National Statistics (ONS) is responsible for producing a wide range of economic and social statistics. It also holds the Census of Population for England and Wales.</p>	<p>Customer Contact Centre, Room 1.015, Office for National Statistics, Cardiff Road, Newport, NP10 8XG.</p> <p>Telephone: 0845 601 3034</p> <p>Minicom: 01633 812399</p> <p>E-mail: info@statistics.gsi.gov.uk</p> <p>Website: http://www.ons.gov.uk</p>
<p>The Northern Ireland Statistics and Research Agency (NISRA) is Northern Ireland's official statistics organisation. The Agency also has responsibility, in Northern Ireland, for the registration of births, marriages, adoptions and deaths and the Census of Population.</p>	<p>Northern Ireland Statistics and Research Agency, McAuley House, 2-14 Castle Street, Belfast, BT1 1SA.</p> <p>Telephone: 028 9034 8100</p> <p>Website: http://www.nisra.gov.uk</p>

© Crown Copyright. Brief extracts from the Crown Copyright material in this publication may be reproduced provided the source is fully acknowledged.