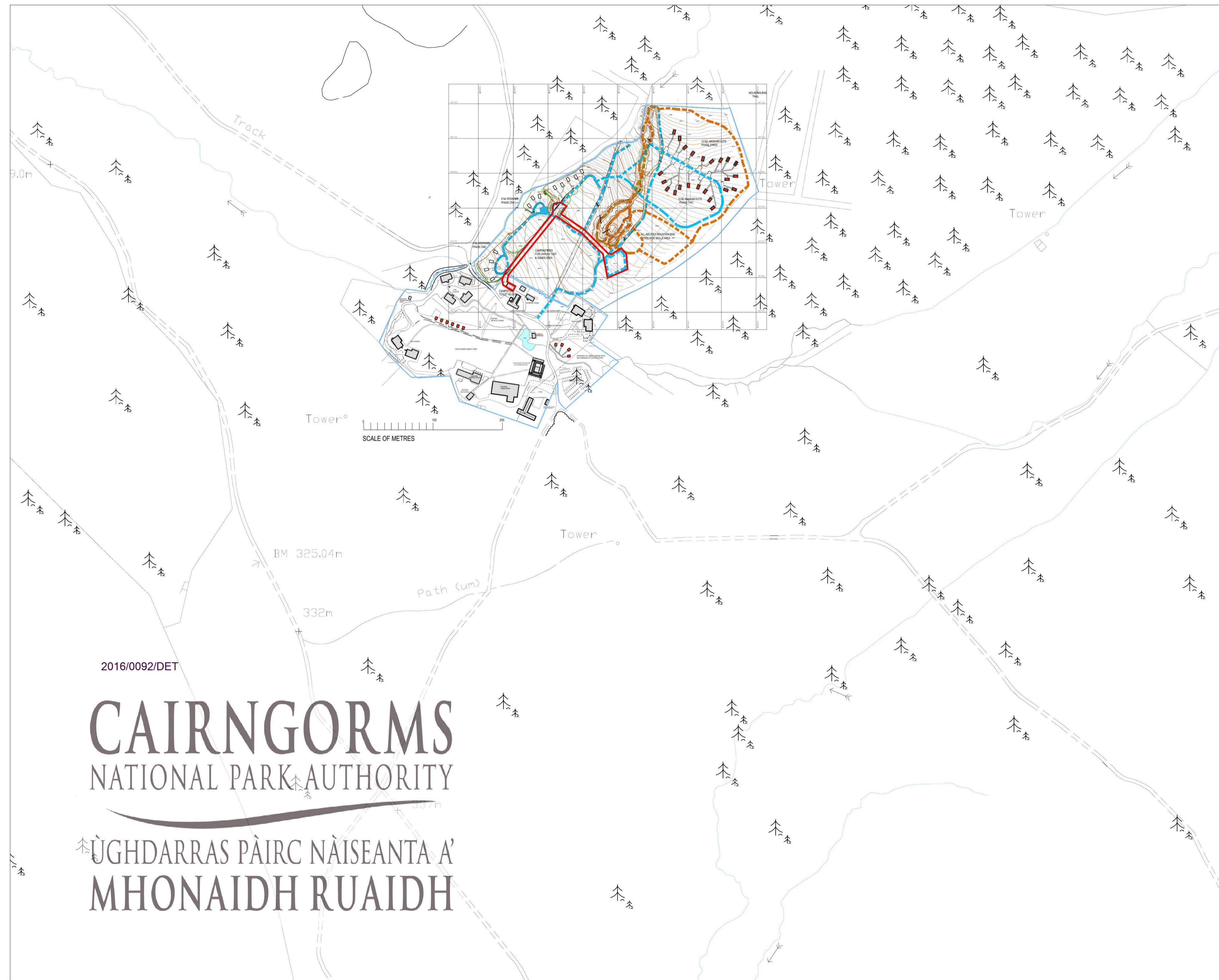
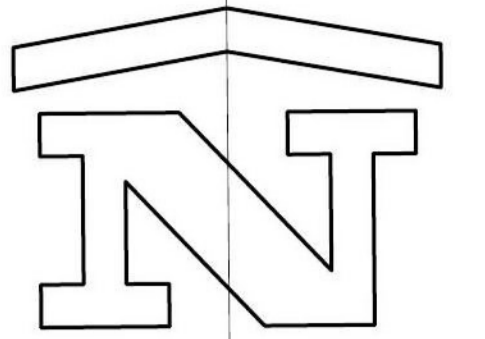


AGENDA ITEM 6

APPENDIX I

PLANS



2016/0092/DET

CAIRNGORMS NATIONAL PARK AUTHORITY

ÙGH DARRAS PÀIRC NÀISEANTA A' MHONaidh Ruaidh

REVISIONS

Bracewell Stirling CONSULTING

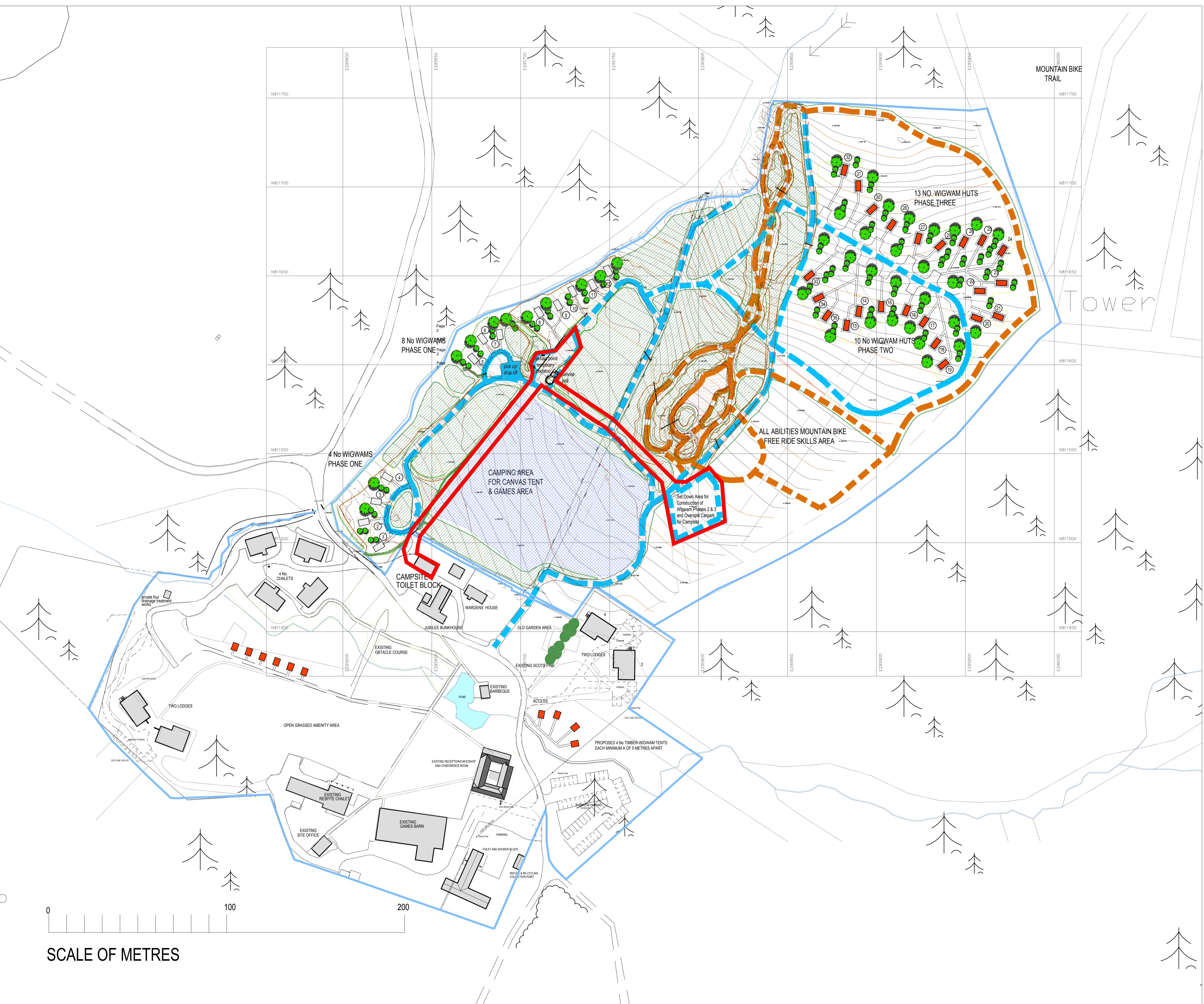
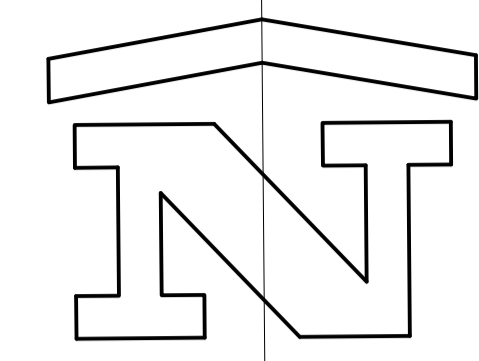
● 5 NESS BANK, INVERNESS, IV2 4SF TEL: 01463 233760 FAX: 01463 233785
○ 38 WALKER TERRACE, TILlicOUNTRY, FK13 6EF TEL: 01259 750301 FAX: 01259 752365

KITCHEN AND TOILET POD
BADAGUISH OUTDOOR CENTRE
SPEYSIDE TRUST

LOCATION PLAN

SCALE	1:2500	DATE	JAN 16	BY	AMacR
			PLANNING		

DWG NO	4124 / LOC	REV	A
--------	------------	-----	---



- Key to Colours**
- Grassed Area with Edges Landscaped
 - Landscaping as per Tree Planting Plan
 - Wheelchair Access Pathways
 - Mountain Bike Trail
 - Canvas Tenting & Games Area
 - Development Area Boundary
 - Wigwam position

Area outwith red line, outlined in blue is extent of site ownership. Works consented under previous consents or other current applications.

Rev A Note to car park area revised. May 16

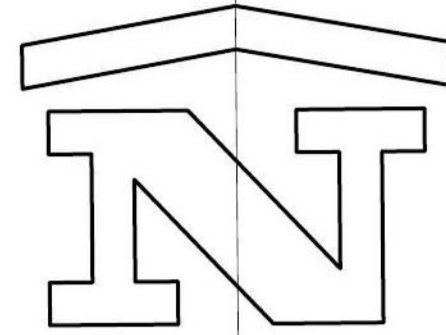
Bracewell Stirling CONSULTING

● 5 NESS BANK, INVERNESS, IV2 4SF ●
TEL: 01463 233760 FAX: 01463 233785
○ 38 WALKER TERRACE, TILlicOLTRY, FK13 6EF ○
TEL: 01259 750301 FAX: 01259 752365

KITCHEN AND TOILET POD BADAGUISH OUTDOOR CENTRE SPEYSIDE TRUST			
SITE LAYOUT			
SCALE	1:2500	DATE	JAN 16
		PLANNING	BY
			AMacR
DWG NO	4124 / 02-050	REV	A

SCALE OF METRES

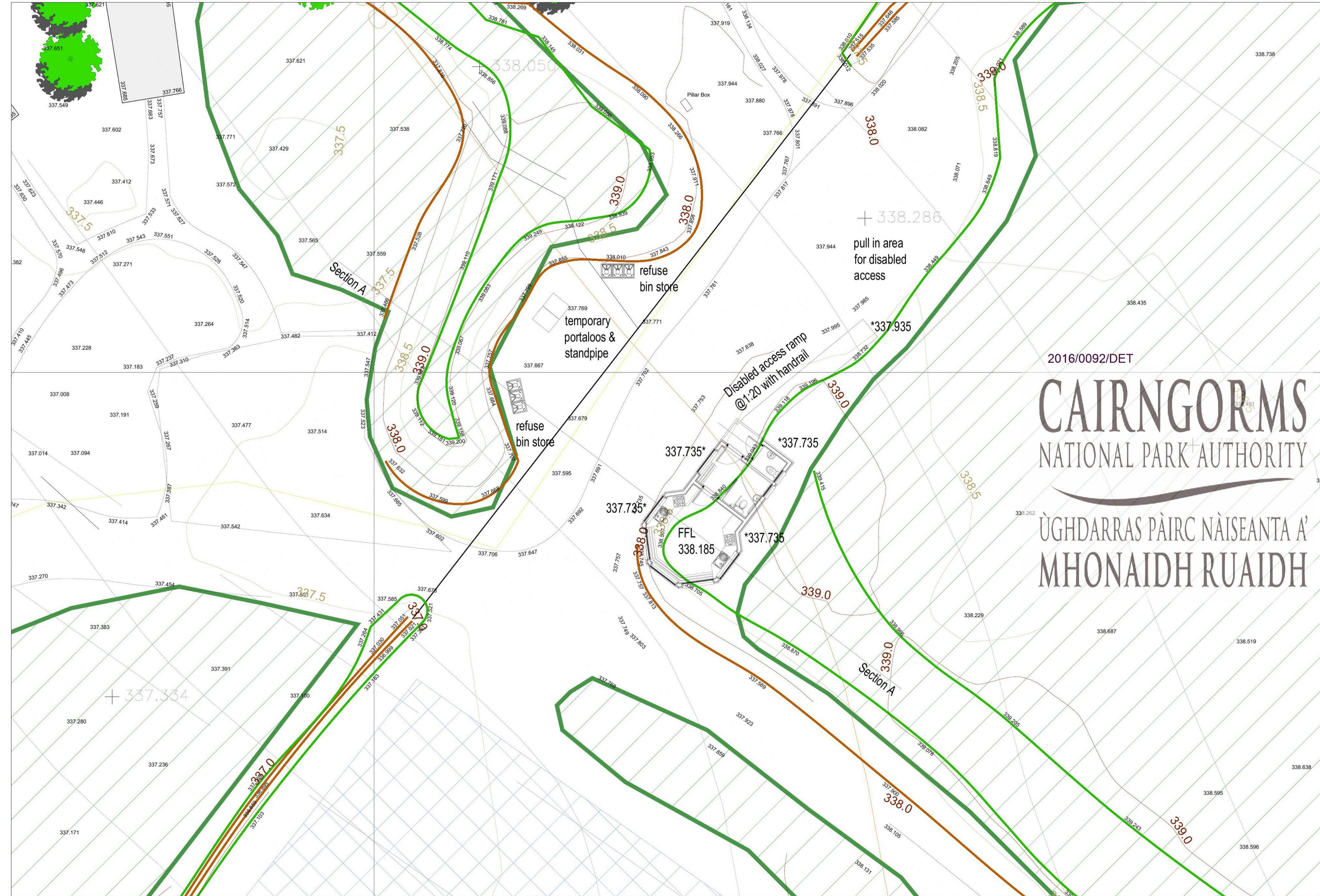
Existing Ground Level



FFL 338.185
FGL 337.735

Section A

Section A



2016/0092/DET

CAIRNGORMS
NATIONAL PARK AUTHORITY

ÙGH DARRAS PAIRC NAISEANTA A'
MHON AIDH RUAIDH

REVISIONS

Bracewell Stirling CONSULTING

5 NESS BANK, INVERNESS, IV2 4SF
TEL: 01463 233760 FAX: 01463 233785
38 WALKER TERRACE, TILlicOLTRY, FK13 6EF
TEL: 01259 750301 FAX: 01259 752365

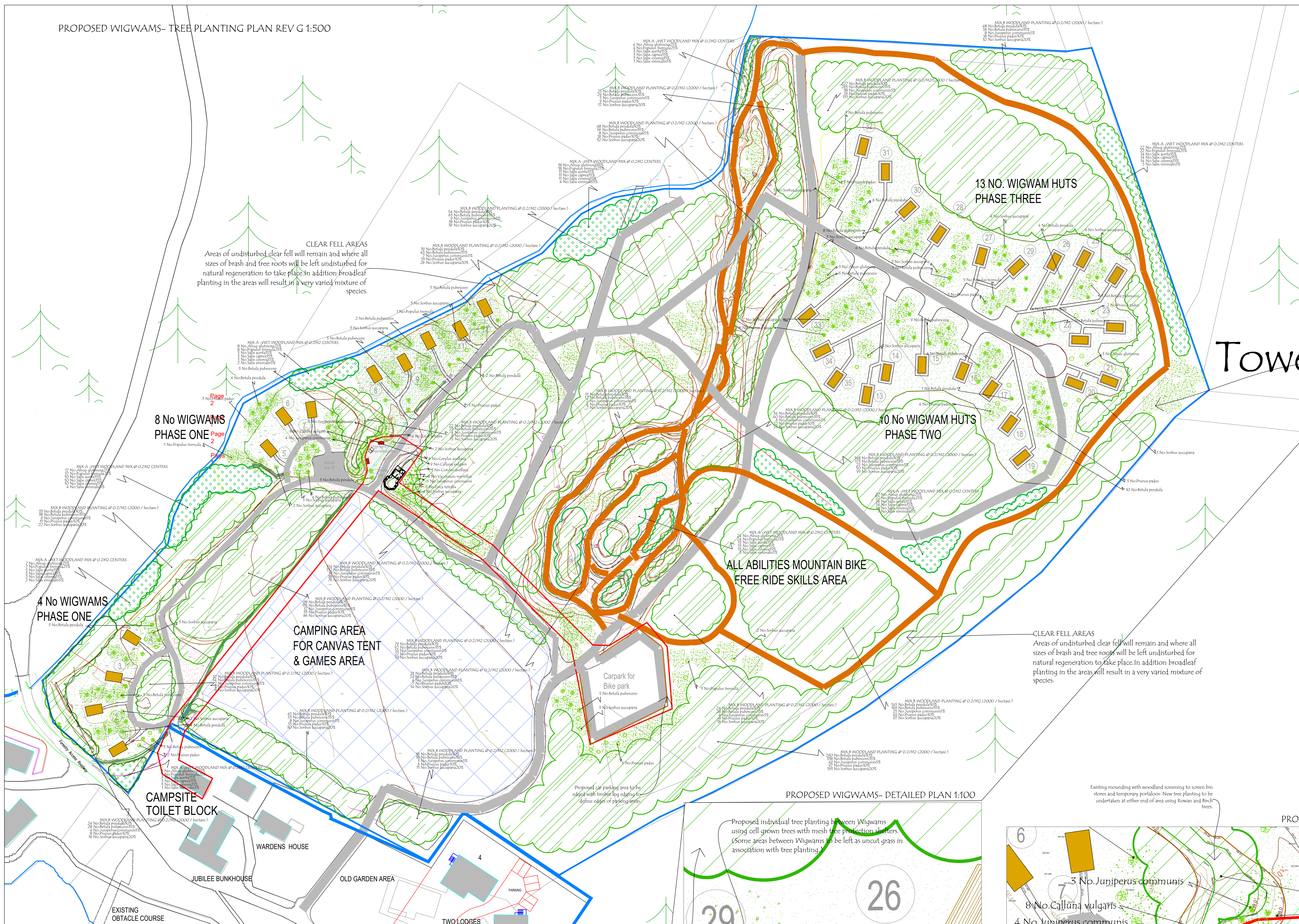
KITCHEN AND TOILET POD
BADAGUISH OUTDOOR CENTRE
SPEYSIDE TRUST

Block Plan Layout

SCALE 1:2500 DATE JAN 16 BY AMacR
PLANNING DWG SIZE A1

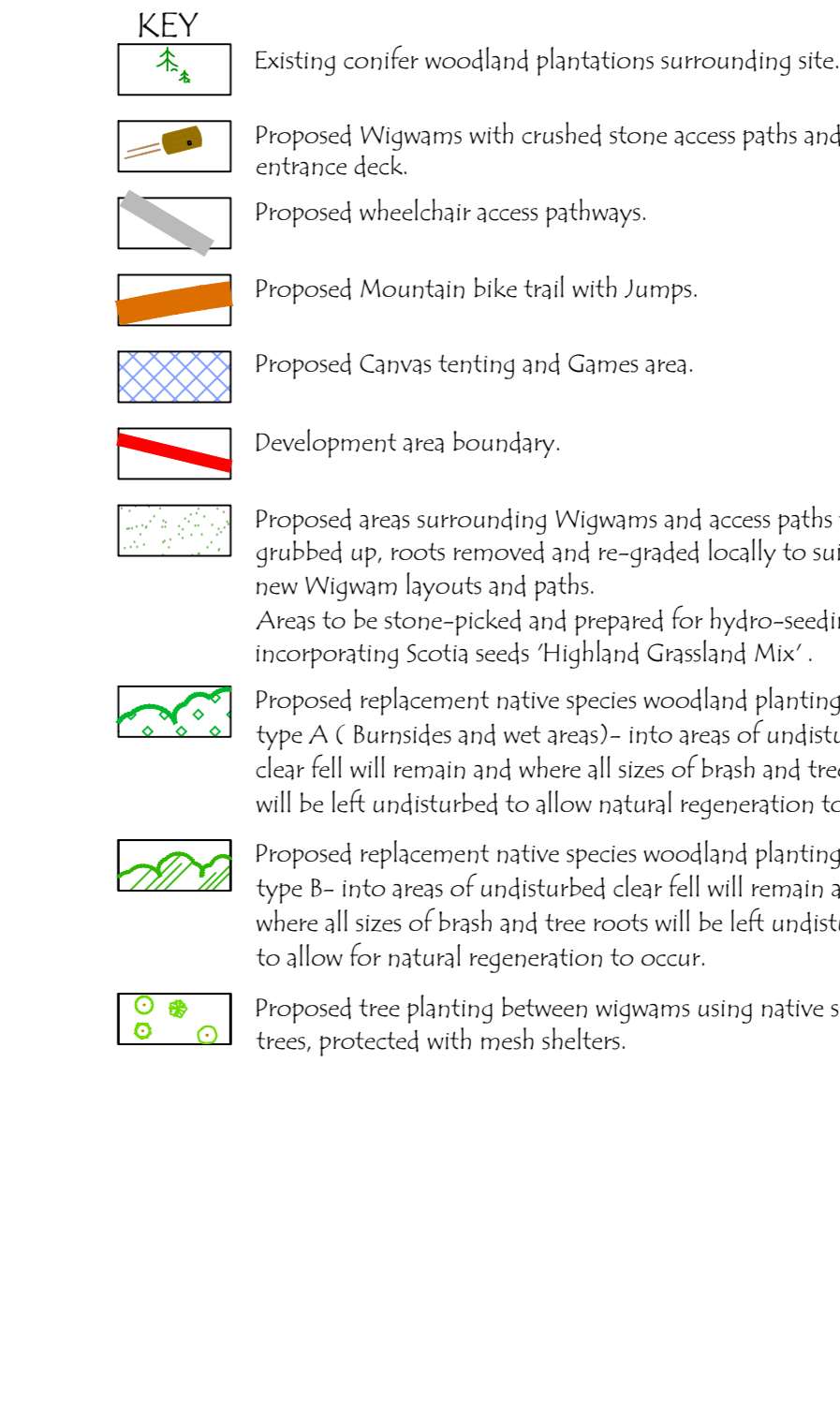
DWG NO 4124 / 02-020 REV

PROPOSED WIGWAMS- TREE PLANTING PLAN REV G 1:500



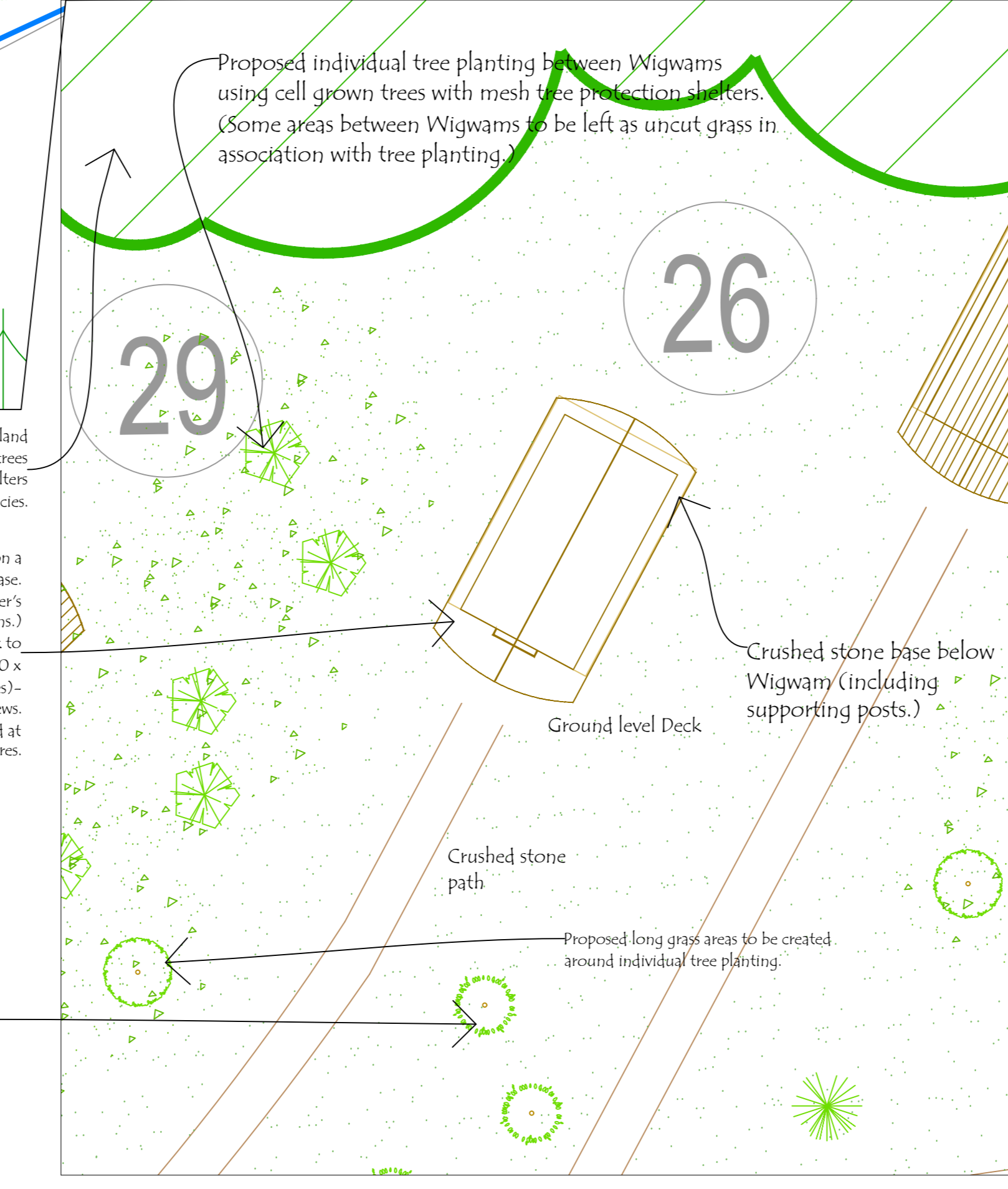
NOTES
REPLACEMENT TREE PLANTING
 Proposed native species trees and shrubs to be cell grown of local provenance (Zone 201- Christie Elite or equal and approved source), notch planted into 50 x 50cm screed (in dry locations) or where ground conditions are wet, planted into upturned turf / earth mound at 2m² centres. (Approximate centres avoiding tree stumps of former forestry planting.) (Stocking density 2000 per hectare)
 Tree planting mixes to follow advice of Aquaterra Ecology using Mix A (for burn sites or wet areas) and Mix B for the remainder of the site.
 Trees to be protected with Tubex or equivalent Green Mesh Tree guards (60cm high, 200mm diameter fixed to 25 x 25 mm timber stakes with two ratchet ties.) Junipers to be protected with Tubex or equivalent Green Mesh Tree guards (60cm high, 500mm diameter fixed to 25 x 25mm timber stakes with 2no. ties.)
 Areas surrounding the replacement woodland planting are to be left to self seed and re-vegetate naturally to provide migration corridors for the dispersal of mammals, invertebrates and flora species.
 It is proposed that the replacement woodland planting and self seeded areas will extend to the site boundaries and link in with the retained areas of woodland / scrub areas that surround the Badagush Outdoor Centre.
 Areas of long grass are to be created and managed in and around the proposed Wigwams in association with the individual tree planting to provide protection to the trees and provide further areas for mammals, invertebrates and flora species to utilize. Refer to Landscape Management Statement for details of the proposed on-going maintenance of the new woodland planting and grassed areas within the site.
WIGWAM LOCATIONS
 Areas proposed for Wigwams to be cleared of tree stumps and roots and re-graded locally to suit the proposed wigwam layouts and access paths etc.
 On completion of the crushed stone bases for the wigwams and access paths, existing soil is to be spread and graded to suit the new ground levels.
 Areas will then be stone picked and prepared for Hydro-seeding incorporating Scotis seeds 'Highland Grassland Mix'.
LIGHTING AND PATHS
 The proposed paths and wigwam access paths are to be lit by low level lighting bollards (to match existing bollard lighting within the Badagush Outdoor Centre.)
 The wheelchair accessible paths and roads will be surfaced with a locally sourced crushed stone and compacted dust surface, without edgings and will be laid to crossfalls to drain into the surrounding woodland areas.
IMPLEMENTATION
 The proposed replacement woodland planting will be undertaken during the winter planting season November 2015 - March 2016 and the individual tree planting surrounding the Wigwams will be undertaken once the Wigwams have been installed and the grass seeded areas have been prepared and seeded.

CLEAR FELL AREAS
 Areas of undisturbed clear fell will remain and where all sizes of brush and tree roots will be left undisturbed for natural regeneration to take place. In addition broadleaf planting in the areas will result in a very varied mixture of species.
NOTES
 Woodland planting alongside the bike tracks, pedestrian routes and vehicular junctions to be held back as follows. Tree planting held back a minimum of 2m and shrubs 1.5m. Woodland planting to be maintained to provide forward visibility to bike tracks, road junctions as required. Woodland planting area surrounding free-ride area to include clear areas without planting to form viewing areas for the parents / carers / participants. Suitable locations for viewing areas to be determined by Badagush Outdoor Centre on site.

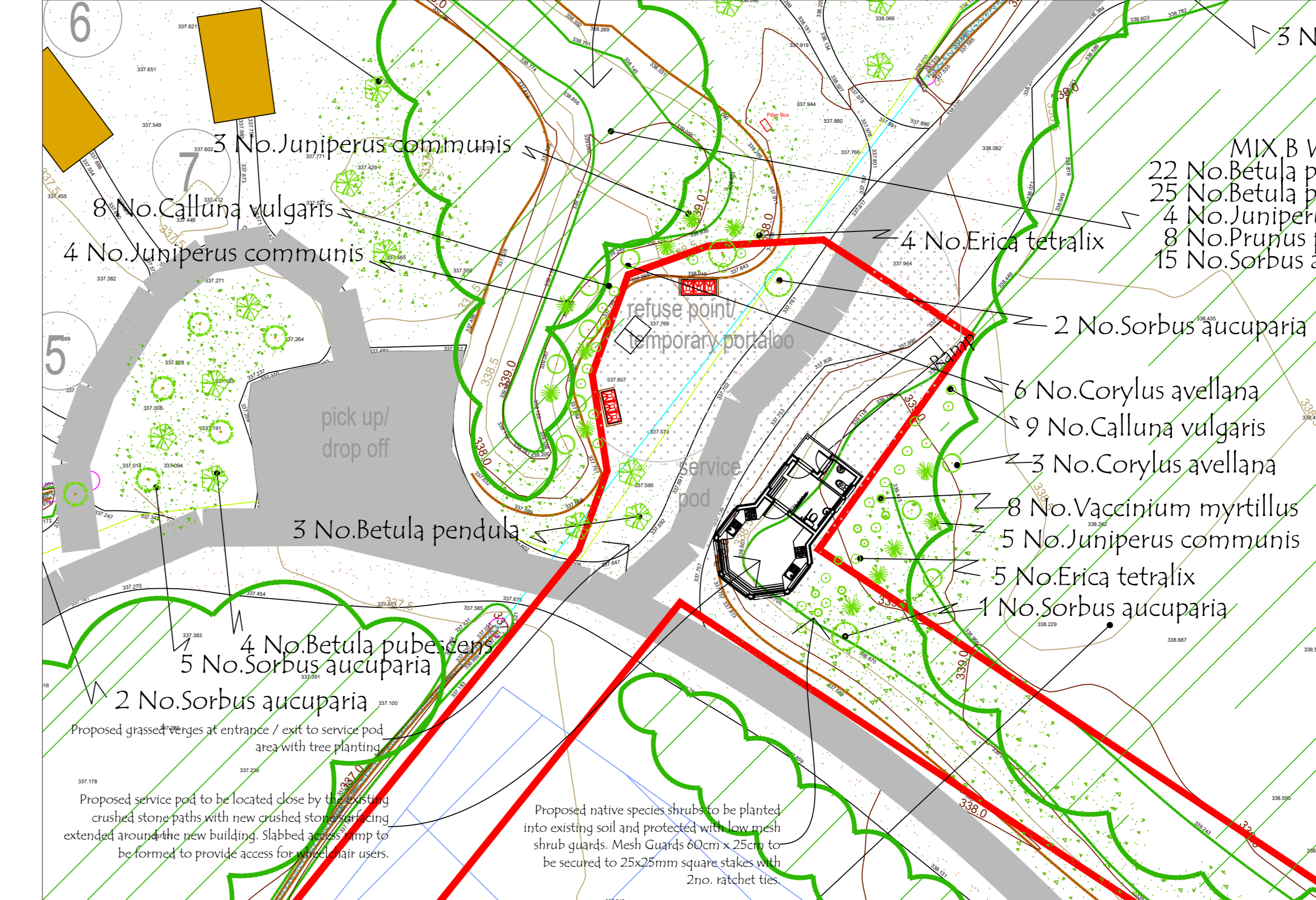


- REVISIONS**
- A: 05.10.14 Tree planting proposals amended to suit the advice of CPNA- Hayley Wiswell (Due to present Scottish Government embargo on the movement or planting of Scots Pine- All Scots Pine planting has been omitted and replaced with native broadleaf species.)
 - B: 08.08.15 Free planting proposals amended to revised wigwam layouts (Boswell Stirling dwg 5665-020-REV C) and to incorporate the all-abilities mountain bike free-ride skills area KIV.
 - C: 10.06.15 Free planting proposals amended to revised wigwam layout 5665-020-REV D KIV.
 - D: 24.06.15 Tree planting revised to suit revised wigwam layout 5665-020-REV D (June 2015) and to suit the updated Topo survey as requested KIV.
 - E: 21.08.15 Proposals amended to incorporate advice from CNPA with regards to holding back and maintaining woodland planting back from bike tracks/ pedestrian routes and vehicular junctions. Clear areas without planting are to be created alongside the free-ride area for spectators. KIV.
 - F: 02.02.16 Proposals amended to incorporate proposed Kitchen / Toilet Pod and parking area for the Bike Park. Planting areas altered with new grassed areas and tree planting proposed at pod and bin storage area. Woodland planting areas adjacent to bike tracks / paths KIV.
 - G: 16.05.16 Additional native species shrub planting added at Pod and bin storage area. Pod detail drawing re-scaled to show new planting Car parking areas to be edged with timber log edging as requested by CNPA KIV.

PROPOSED WIGWAMS- DETAILED PLAN 1:100



PROPOSED SERVICE POD- DETAILED PLAN 1:200



PLANTING SCHEDULE REV B (16.05.16)

Planting Area	Planting Date	Planting Method	Planting Density	Planting Notes
Wigwam 1	Nov 2015	Cell Grown	2000/ha	Mix A
Wigwam 2	Nov 2015	Cell Grown	2000/ha	Mix A
Wigwam 3	Nov 2015	Cell Grown	2000/ha	Mix A
Wigwam 4	Nov 2015	Cell Grown	2000/ha	Mix A
Wigwam 5	Nov 2015	Cell Grown	2000/ha	Mix A
Wigwam 6	Nov 2015	Cell Grown	2000/ha	Mix A
Wigwam 7	Nov 2015	Cell Grown	2000/ha	Mix A
Wigwam 8	Nov 2015	Cell Grown	2000/ha	Mix A
Wigwam 9	Nov 2015	Cell Grown	2000/ha	Mix A
Wigwam 10	Nov 2015	Cell Grown	2000/ha	Mix A
Wigwam 11	Nov 2015	Cell Grown	2000/ha	Mix A
Wigwam 12	Nov 2015	Cell Grown	2000/ha	Mix A
Wigwam 13	Nov 2015	Cell Grown	2000/ha	Mix A
Wigwam 14	Nov 2015	Cell Grown	2000/ha	Mix A
Wigwam 15	Nov 2015	Cell Grown	2000/ha	Mix A
Wigwam 16	Nov 2015	Cell Grown	2000/ha	Mix A
Wigwam 17	Nov 2015	Cell Grown	2000/ha	Mix A
Wigwam 18	Nov 2015	Cell Grown	2000/ha	Mix A
Wigwam 19	Nov 2015	Cell Grown	2000/ha	Mix A
Wigwam 20	Nov 2015	Cell Grown	2000/ha	Mix A
Wigwam 21	Nov 2015	Cell Grown	2000/ha	Mix A
Wigwam 22	Nov 2015	Cell Grown	2000/ha	Mix A
Wigwam 23	Nov 2015	Cell Grown	2000/ha	Mix A
Wigwam 24	Nov 2015	Cell Grown	2000/ha	Mix A
Wigwam 25	Nov 2015	Cell Grown	2000/ha	Mix A
Wigwam 26	Nov 2015	Cell Grown	2000/ha	Mix A
Wigwam 27	Nov 2015	Cell Grown	2000/ha	Mix A
Wigwam 28	Nov 2015	Cell Grown	2000/ha	Mix A
Wigwam 29	Nov 2015	Cell Grown	2000/ha	Mix A
Wigwam 30	Nov 2015	Cell Grown	2000/ha	Mix A
Wigwam 31	Nov 2015	Cell Grown	2000/ha	Mix A
Wigwam 32	Nov 2015	Cell Grown	2000/ha	Mix A
Wigwam 33	Nov 2015	Cell Grown	2000/ha	Mix A
Wigwam 34	Nov 2015	Cell Grown	2000/ha	Mix A
Wigwam 35	Nov 2015	Cell Grown	2000/ha	Mix A
Wigwam 36	Nov 2015	Cell Grown	2000/ha	Mix A
Wigwam 37	Nov 2015	Cell Grown	2000/ha	Mix A
Wigwam 38	Nov 2015	Cell Grown	2000/ha	Mix A
Wigwam 39	Nov 2015	Cell Grown	2000/ha	Mix A
Wigwam 40	Nov 2015	Cell Grown	2000/ha	Mix A
Wigwam 41	Nov 2015	Cell Grown	2000/ha	Mix A
Wigwam 42	Nov 2015	Cell Grown	2000/ha	Mix A
Wigwam 43	Nov 2015	Cell Grown	2000/ha	Mix A
Wigwam 44	Nov 2015	Cell Grown	2000/ha	Mix A
Wigwam 45	Nov 2015	Cell Grown	2000/ha	Mix A
Wigwam 46	Nov 2015	Cell Grown	2000/ha	Mix A
Wigwam 47	Nov 2015	Cell Grown	2000/ha	Mix A
Wigwam 48	Nov 2015	Cell Grown	2000/ha	Mix A
Wigwam 49	Nov 2015	Cell Grown	2000/ha	Mix A
Wigwam 50	Nov 2015	Cell Grown	2000/ha	Mix A

ALL DIMENSIONS TO BE CHECKED ON SITE
 WORK TO FIGURED DIMENSIONS ONLY
 REPORT DISCREPANCIES TO THE LANDSCAPE ARCHITECT
 AT ONCE BEFORE PROCEEDING

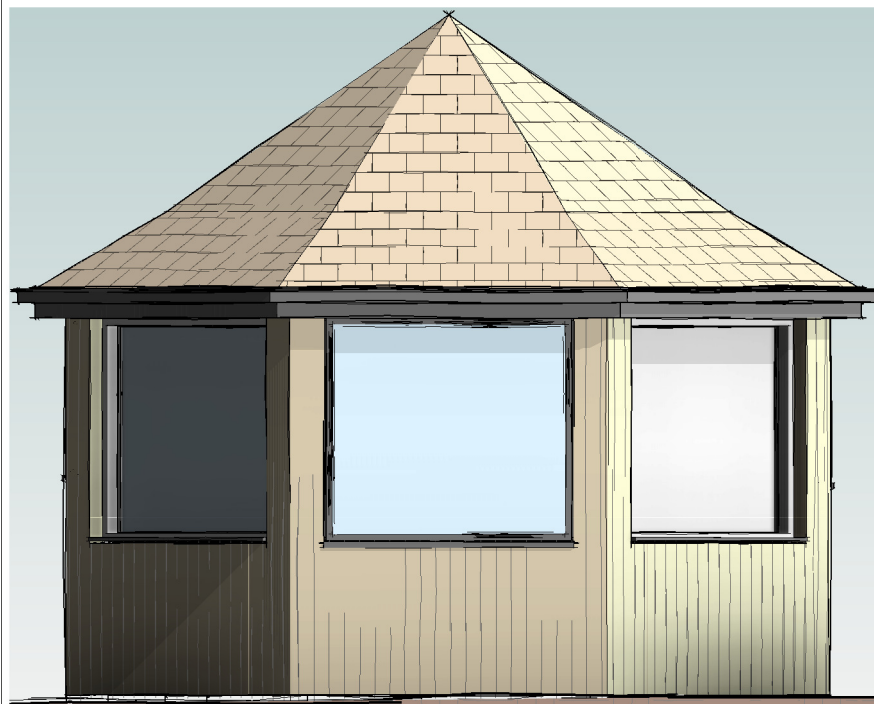
HIGHLAND LANDSCAPE DESIGN
 MORVEN,
 CAROLINE STREET,
 FORBES,
 MORAYSHIRE,
 SCOTLAND,
 IV 36 1AN.
 TEL: 01309 676800
 FAX: 01309 676515
 jim@highlandlandscape.co.uk

Client
 SPEYSIDE TRUST /
 BADAGUSH OUTDOOR CENTRE

KEITH L WOOD BA (HONS) CMLI
 LANDSCAPE ARCHITECT
 1, Old Branziel Cottage, Balmorie, By Torrance,
 Glasgow, G84 4AH.
 Tel: 01562 620558; Mosh 07884 054586
 email: keith.l.wood@openworld.com

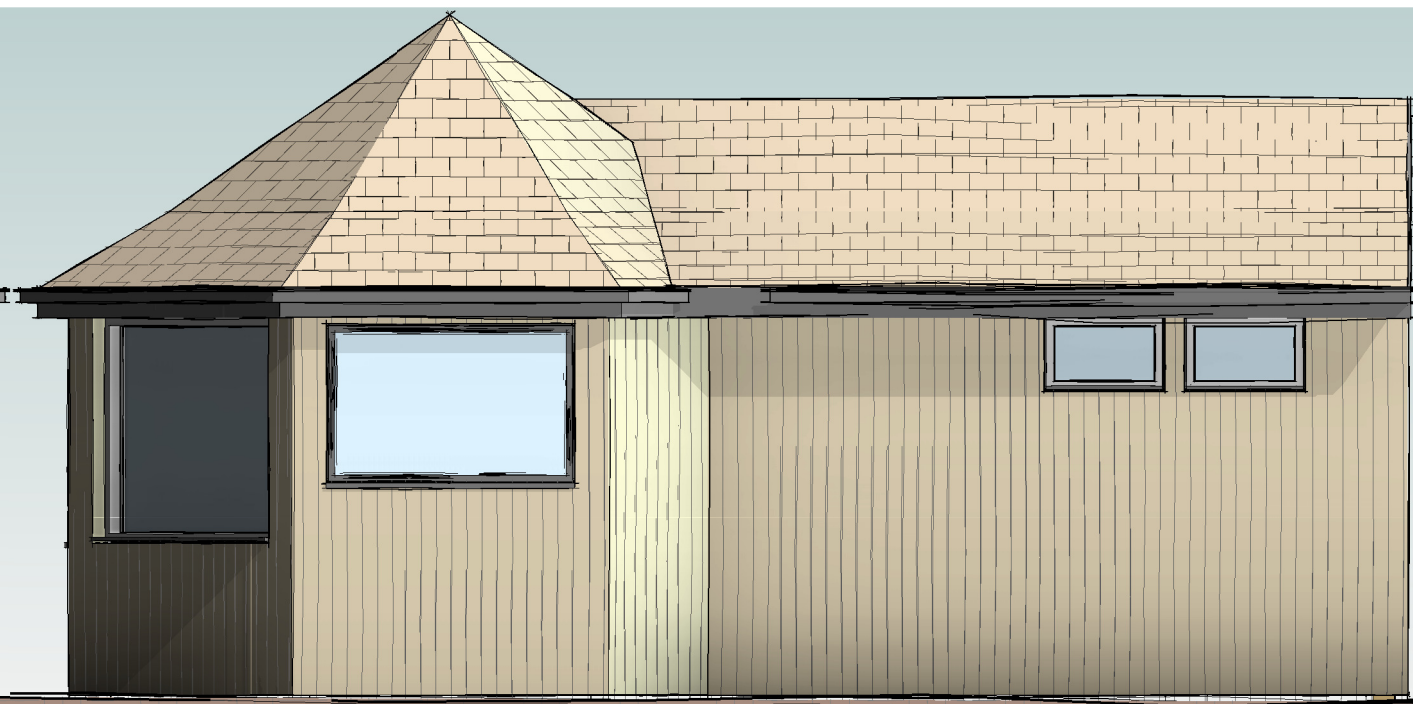
Project Title
 BADAGUSH OUTDOOR CENTRE,
 GLENMORE, AVIEMORE
 Drawing Title
 PROPOSED WIGWAMS - TREE PLANTING
 PROPOSALS

Scale 1:500/PA0 Date 09.09.14
 Drawn: kwood Approved: Jlogie
 Drawing No: Rev:
 HLD K 178.14 SL-01 G



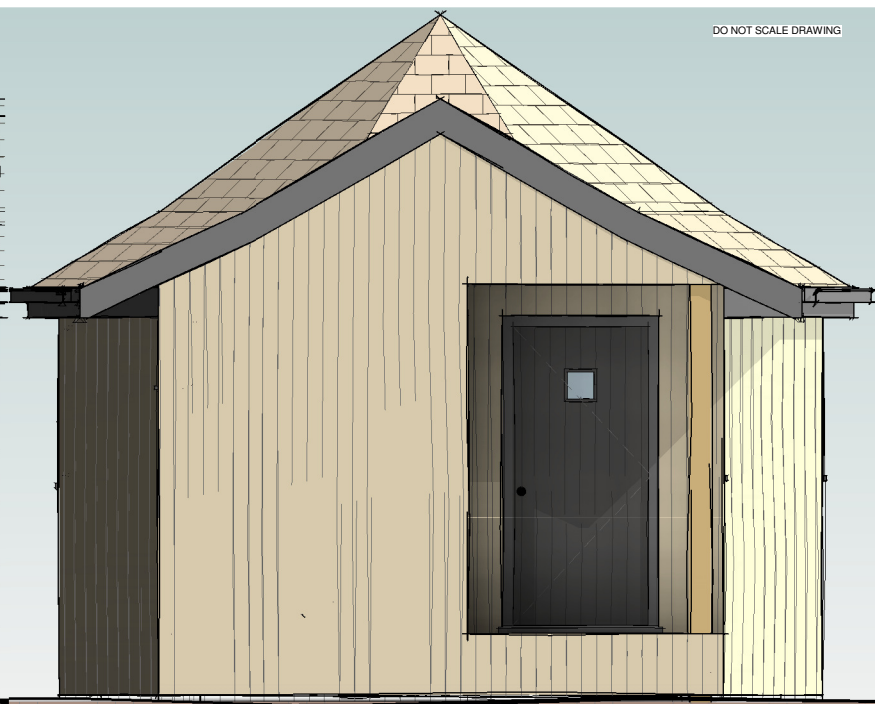
OYSTER_BA End Elevation

1 : 50



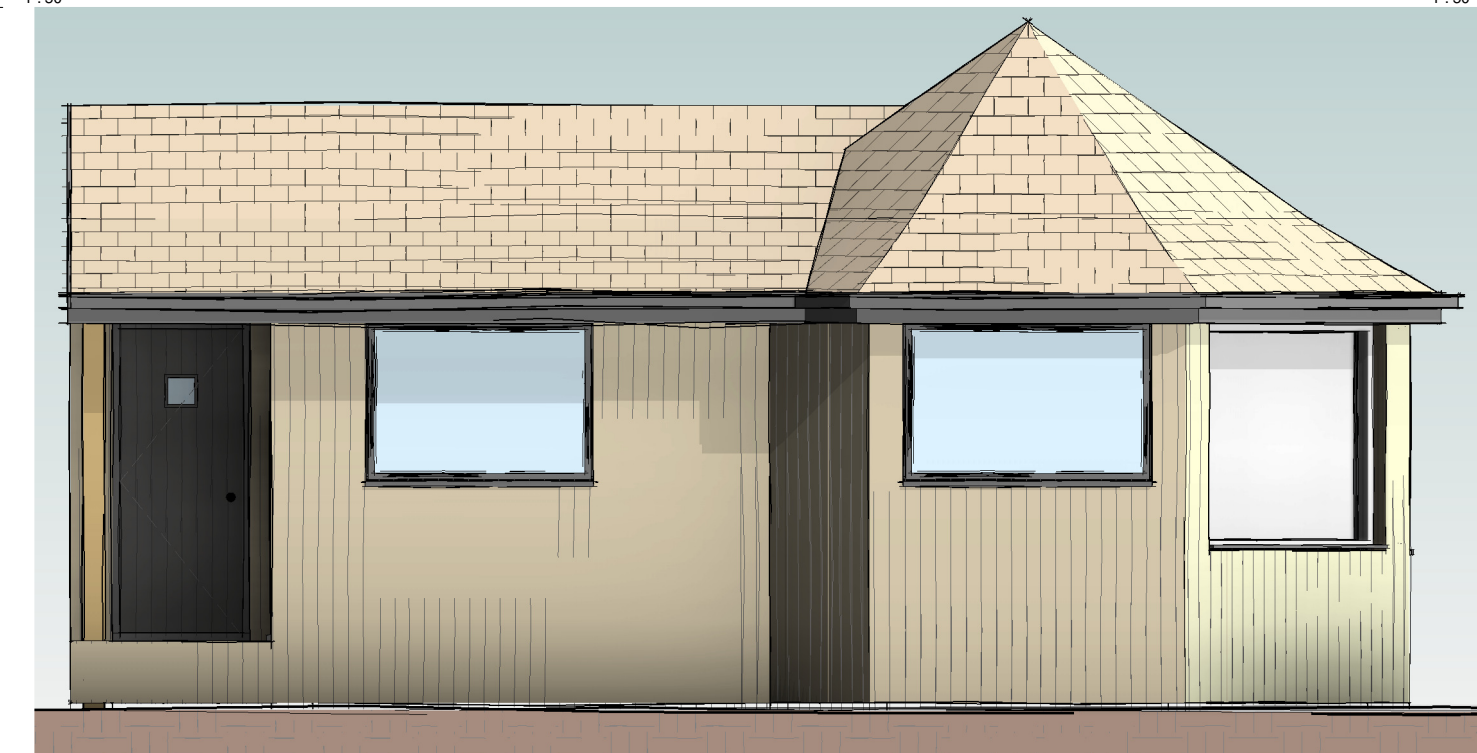
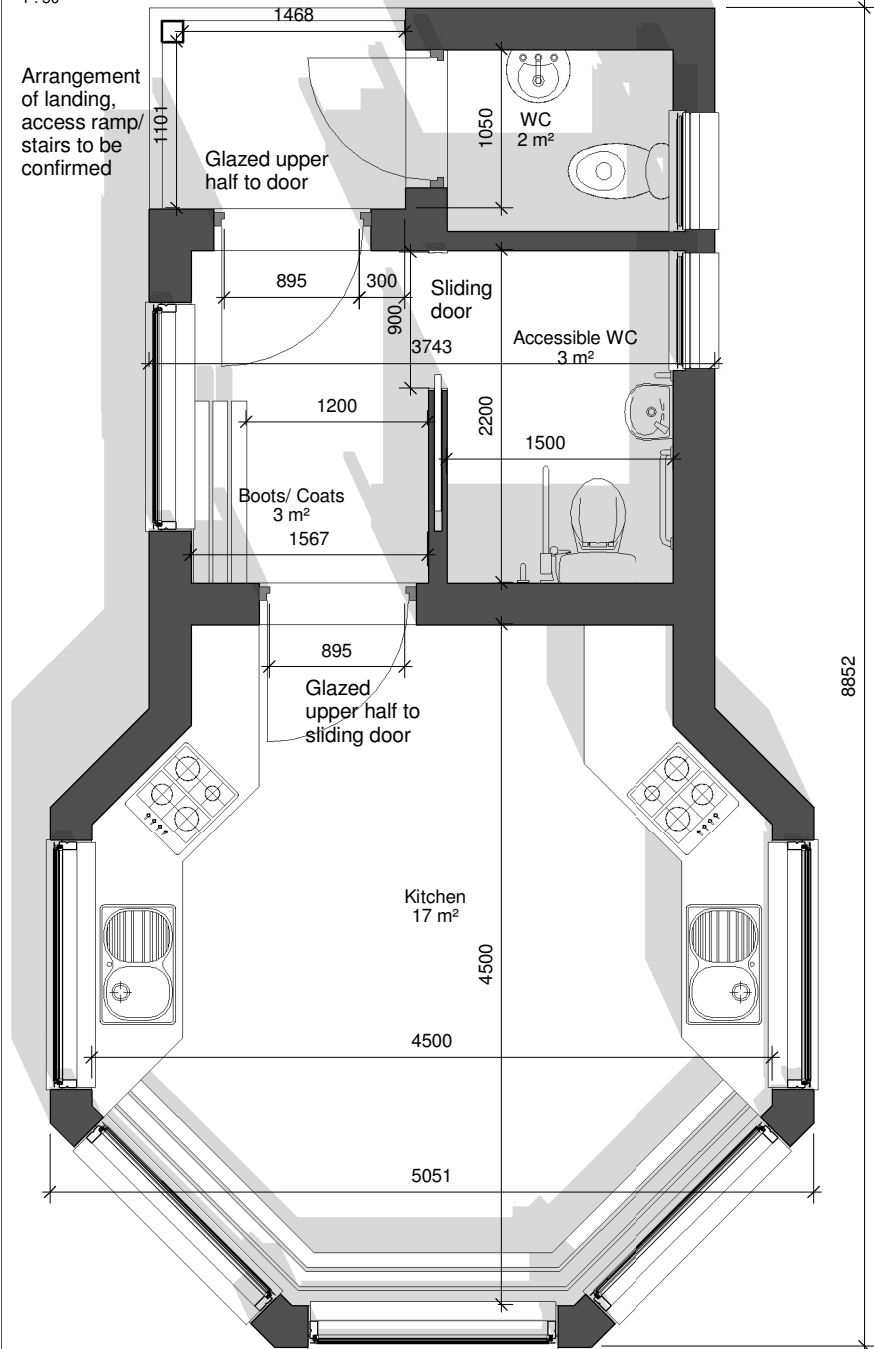
OYSTER_BA Side Elevation 1

1 : 50



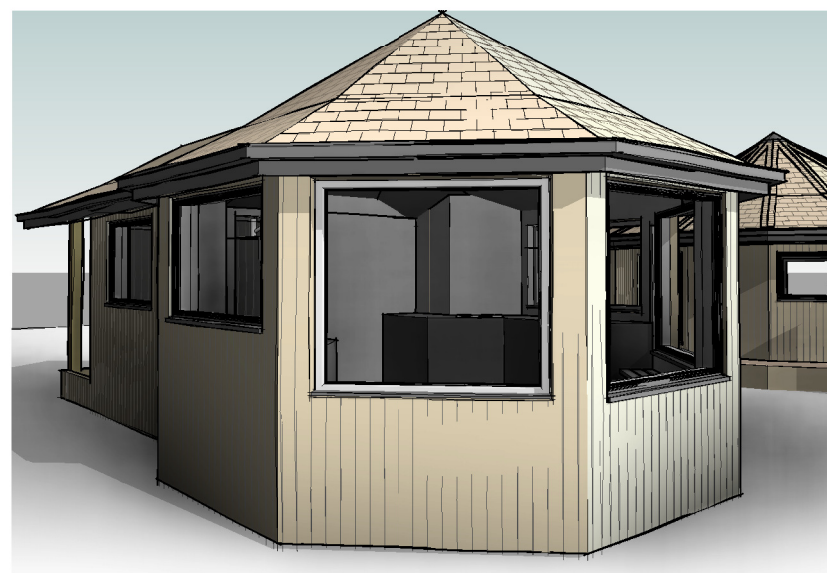
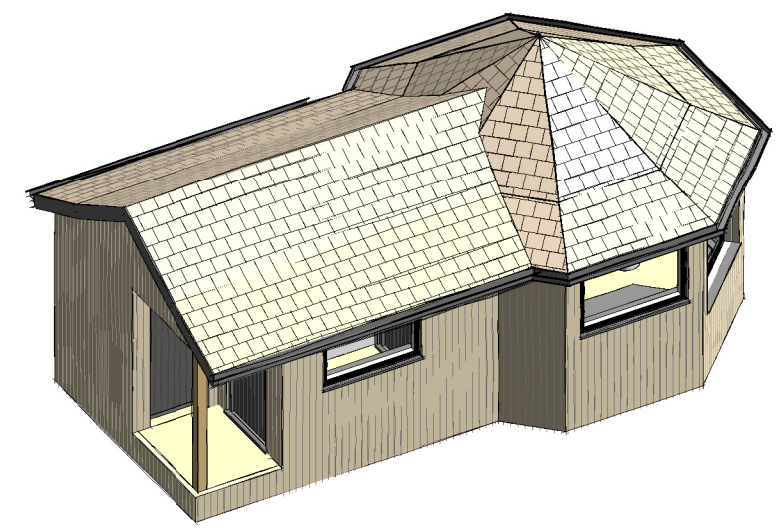
OYSTER_BA Front Elevation

1 : 50



OYSTER_BA Side Elevation 2

1 : 50



OYSTER_BA Ground Floor

1 : 50

DRAFT

Rev	Date	Description



PROJECT
OYSTER Eco Build

TITLE
Badaguish Cabins

DRAWING NO
(10)022_(BA)100

REV
SCALE @ A3
1 : 50