

AGENDA ITEM 5

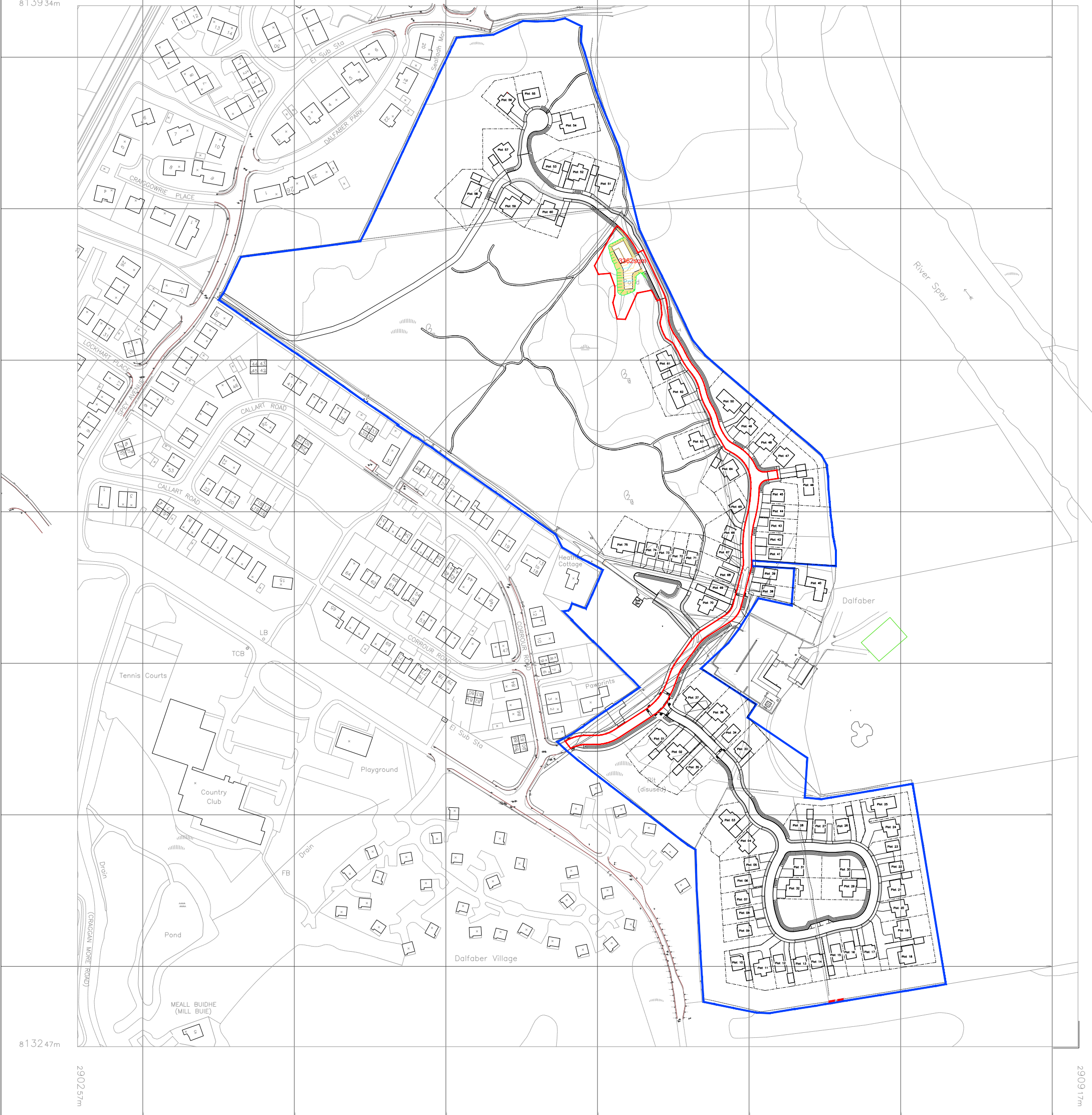
APPENDIX I

2022/0167/DET

PLANS

2902.57m
8139.34m

2909.17m



8132.47m
2902.57m

2909.17m

C	19.04.22	Pump station boundary altered & Linetypes	SS
REV	DATE	DESCRIPTION	DRN

Bracewell Stirling CONSULTING

38 WALKER TERRACE, TILlicOLTRY, FK13 6EF
TEL: 01259 750301

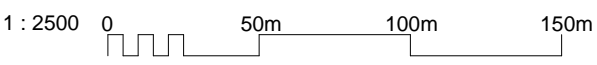
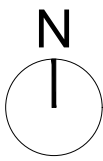
5 NESS BANK, INVERNESS, IV2 4SF
TEL: 01463 233760

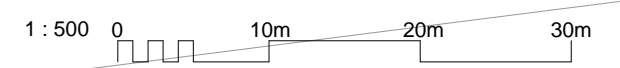
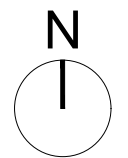
HOUSING DEVELOPMENT
DALFABER FARM, AVIEMORE

TITLE
LOCATION PLAN (PUMPING STATION)

SCALE	DATE	08.03.22	BY	SS
1:2500	PURPOSE	PLANNING	PAPER	A3

DWG NO.-REV
3920 / K2 / 01-002 C





3362sqm

Golf Course

E 290647.893
N 813707.248

C	19.04.22	PUMPING STATION BOUNDARY ADJUSTED & LINE TYPES	SS
REV	DATE	DESCRIPTION	DRN

Bracewell Stirling CONSULTING

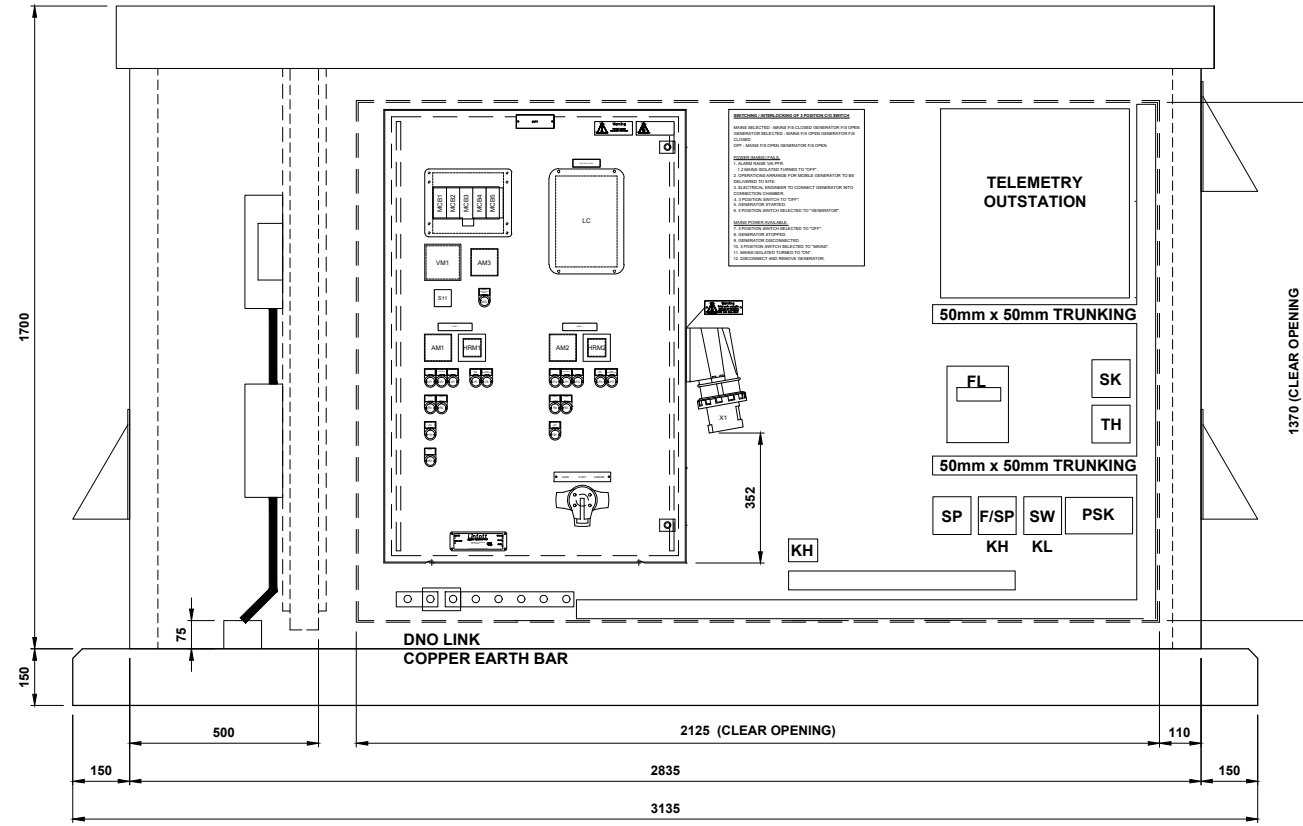
38 WALKER TERRACE, TILlicOUNTRY, FK13 6EF
TEL: 01259 750301
5 NESS BANK, INVERNESS, IV2 4SF
TEL: 01463 233760

HOUSING DEVELOPMENT
DALFABER FARM, AVIEMORE
-

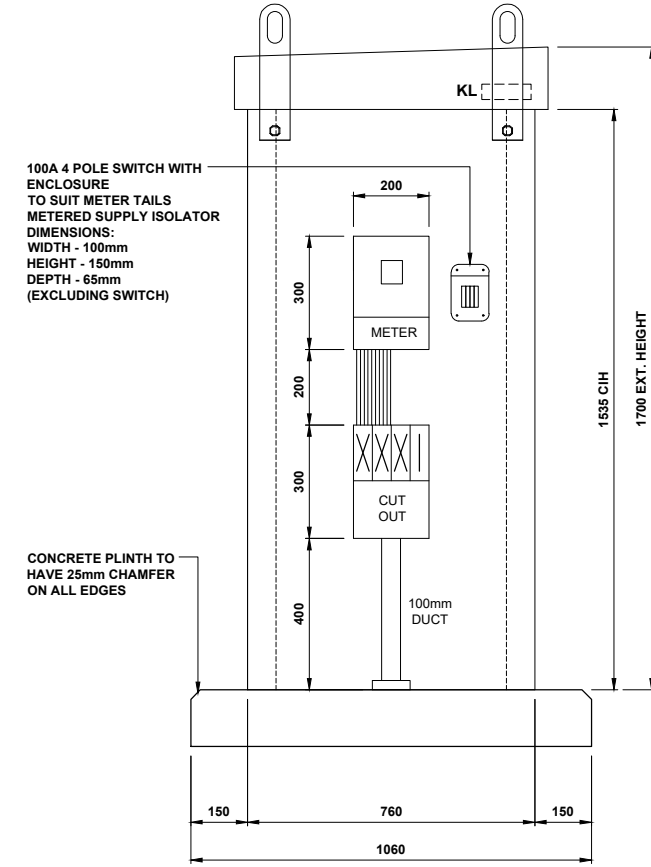
TITLE
PUMP STATION LAYOUT

SCALE	DATE	BY	SS
1:500	08.03.22	PAPER	A3
	PURPOSE	PLANNING	

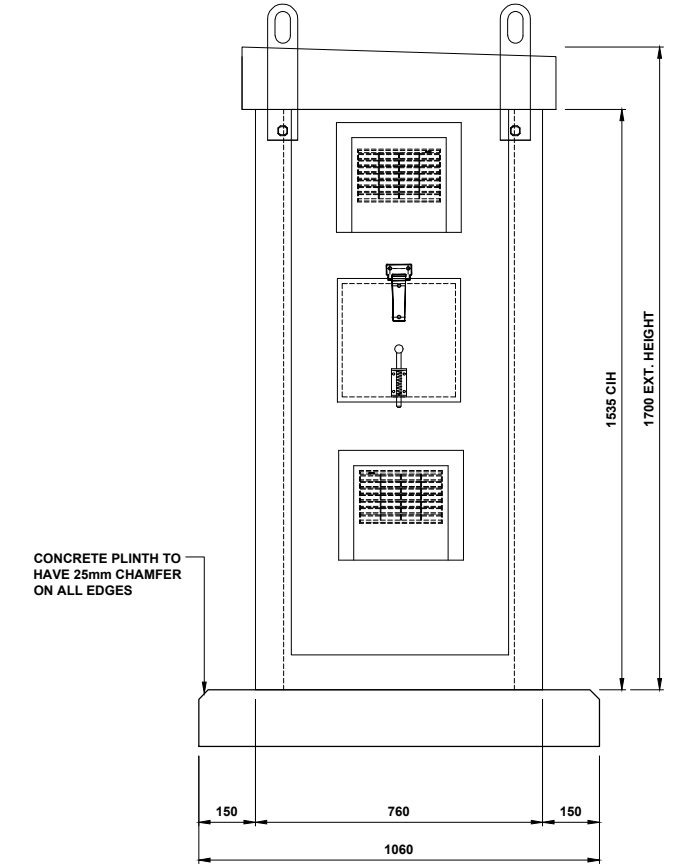
DWG NO.-REV
3920 / K2 / 00-011 C



FRONT ELEVATION ON KIOSK
SCALE 1:10



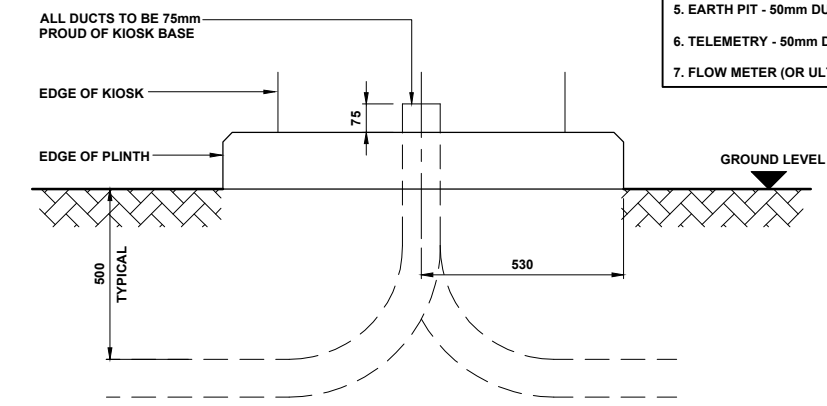
L.H.S. SIDE ELEVATION
SCALE 1:10



R.H.S. SIDE ELEVATION
SCALE 1:10

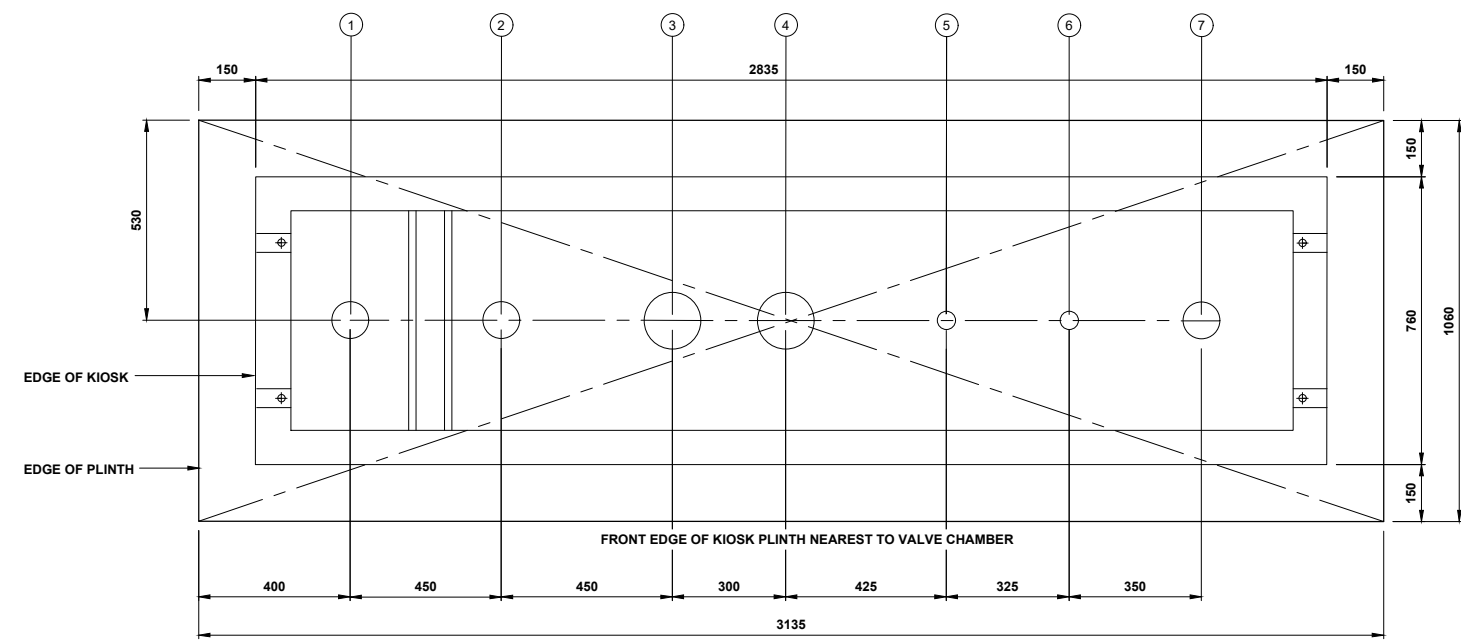
KEY

- ELECTRICITY SUPPLY - 100mm DUCT
- ULTRASONIC TRANSDUCER (OR FLOW METER) - 100mm DUCT
- PUMP 1 - 150mm DUCT
- PUMP 2 - 150mm DUCT
- EARTH PIT - 50mm DUCT
- TELEMETRY - 50mm DUCT
- FLOW METER (OR ULTRASONIC TRANSDUCER) - 100mm DUCT



TYPICAL DUCT DETAILS
SCALE 1:10

- NOTE: ON COMPLETION OF TESTING AND COMMISSIONING, SEAL KIOSK DUCTS WITH PROPRIETY SEALANT
- NOTE: KIOSK TO BE FITTED WITH VERMIN PROOF GRILLES
- NOTE: DUCTS SHALL CONSIST OF RIGID BLACK OR GREY PVC-U PIPE, COMPLYING WITH BS EN 1401-1 AND BS 4660
- NOTE: DUCTS TO BE LEFT WITH AN EXCESS 1.0m LENGTH OF 8mm DIAMETER NYLON DRAWCORD IN PLACE, ANCHORED AT EACH END IN ACCORDANCE WITH SFS 3.3.13.4.12
- NOTE: DUCTS FOR THE PUMP UNIT CABLES TO BE TERMINATED BEHIND THE PUMP GUIDE IN ACCORDANCE WITH SFS3 3.13.4 ITEM 8
- NOTE: DUCTS SHOULD CONSIST OF RIGID BLACK OR GREY PVC-U PIPE, COMPLYING WITH BS EN 1401-1 AND BS4660 IN ACCORDANCE WITH SFS3 3.13.4.6



PLAN ON KIOSK PLINTH
SCALE 1:10

- ABBREVIATIONS:-**
- TH:- THERMOSTAT
 - KH:- KIOSK HEATER
 - LC:- LEVEL CONTROLLER
 - SW:- LIGHT SWITCH
 - KL:- KIOSK LIGHT
 - SP:- FUSED SPUR
 - SK:- BT SOCKET
 - PSK:- 230V TWIN SWITCHED SOCKET
 - FL:- FLOWMETER TRANSMITTER

- NOTES:-**
- ALL DOOR HINGES ARE STAINLESS STEEL
 - BACKBOARD 18mm THICK VARNISHED PLYWOOD
 - CONSTRUCTION IS ENCAPSULATED 18mm THICK PLYBOARD WITH FIRE RESISTANT RESIN, EXCEEDING 30 MINUTES, INSULATION U-VALUE 1.5W/sq.m/deg.C
 - DOOR STAYS FITTED, SELF-LATCHING, WITH DOORS OPENING TO 110 deg.
 - IP55 RATING
 - EXTERNAL FINISH IS SMOOTH. COLOUR TO BS 4800 14C39, INTERNAL COLOUR WHITE
 - INTERNAL EQUIPMENT HAS A MINIMUM RATING OF IP54
 - COMPONENTS WITHIN PANEL HAS A MINIMUM RATING OF IP2X
 - INTERNAL LABELS WILL BE PROVIDED FOR PUMP INFORMATION, ULTRASONIC CONTROLLER AND DETAILS OF RISING MAIN, PERIODIC TEST LABEL TO BS7671 AND RCD TEST LABEL
 - INTERNAL CABLES TO BE RUN INSIDE EITHER 20MM PVC CONDUIT OR GALVANISED TRUNKING
 - CONNECTION TO TUBULAR HEATER TO BE RUN IN HEAT RESISTANT CABLE



A FIRST ISSUE		GT 30.06.21	SC 30.06.21	SC 30.06.21
Rev	Details	Drawn Date	Chk'd Date	App'd Date
<p>FERRIER PUMPS LTD EDINBURGH • ABERDEEN • GLASGOW Tel 0131 5534001 Fax 0131 5531972 Tel 01224 782002 Fax 01224 780060 Tel 0141 5543454 Fax 0141 5545772</p>		<p>Status</p> <p>FOR APPROVAL</p>		
		<p>Contractor Scotia Homes Ltd Balmacassie Elton Aberdeenshire AB41 9QR</p>		
Location NORTH DALFABER AVIEMORE		Scale AS SHOWN		
Drawing Title KIOSK & PLINTH DETAIL FOR WASTE WATER PUMPING STATION		Sheet Size A1		
Drawing No. C1743 001-03		Revision A	Sheet of 3 8	