

AGENDA ITEM 7

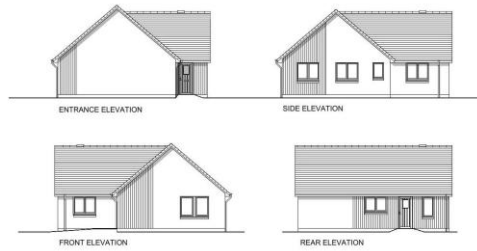
APPENDIX 1b

2013/0120/DET

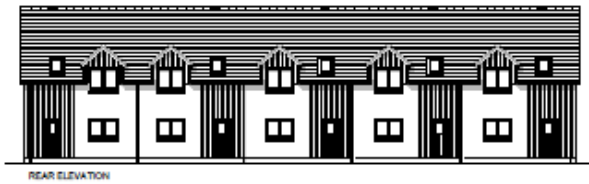
**PROPOSED HOUSE TYPES
CRANNICH PARK SITE**

CAIRNGORMS NATIONAL PARK AUTHORITY
Planning Committee Agenda Item 7 Appendix 1b 13/03/2015

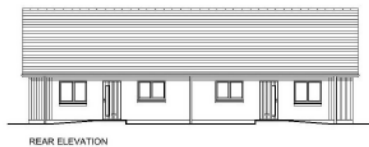
Appendix 1(b) Proposed House Types Crannich Park Site



- **Type 3B5PB** – three bedroom detached single storey L shaped house



- **Type 2B4PV** – two bedroom terraced one and a half storey houses with front porch features (five in terrace)



- **Type 2BB3P** – two bedroom semi detached single storey houses with front wing features

CAIRNGORMS NATIONAL PARK AUTHORITY
Planning Committee Agenda Item 7 Appendix 1b 13/03/2015



- **Type 2B4PV** – two bedroom terraced one and a half storey houses (three in terrace)



- **Type 2B4PV** – two bedroom semi detached one and a half storey houses



- **Type 3b5PVCH**- three bedroom semi detached houses