

# Agenda Item 6

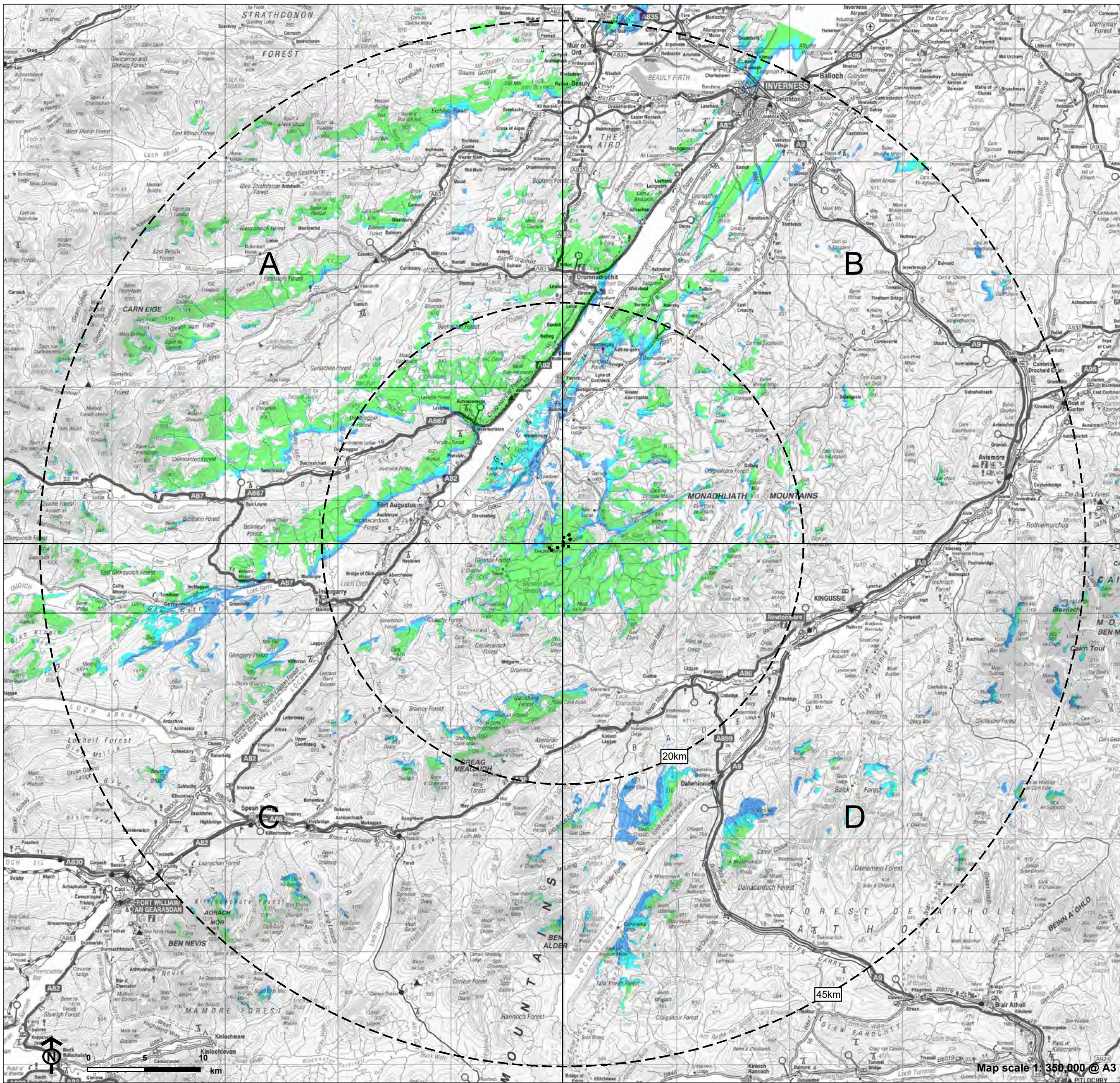
## Appendix 1

2024/0068/PAC

Dell 2 windfarm

ZTV development in isolation

Figure 4.2.1: Blade Tip ZTV



Proposed Turbine Locations

Study Areas

Turbine Visibility:

1 - 3

4 - 6

7 - 9

NOTES: Calculated using Earth's curvature (radius 6360km) and atmospheric refraction coefficient of 0.075.  
Terrain data is derived from OS Terrain 50 gridded height data.  
ZTV calculation does not take into account any surface features such as trees and buildings.  
Blade tip height - 200m / 180m  
Hub height - 125m / 105m  
ZTV view height - 2m  
ZTV calculation resolution - 50m