

AGENDA ITEM 8

APPENDIX I

2016/0024/DET

ILLUSTRATIONS

CAIRNGORMS NATIONAL PARK AUTHORITY

ÙGH DARRAS PÀIRC NÀISEANTA A' MHONaidh RUAIDH

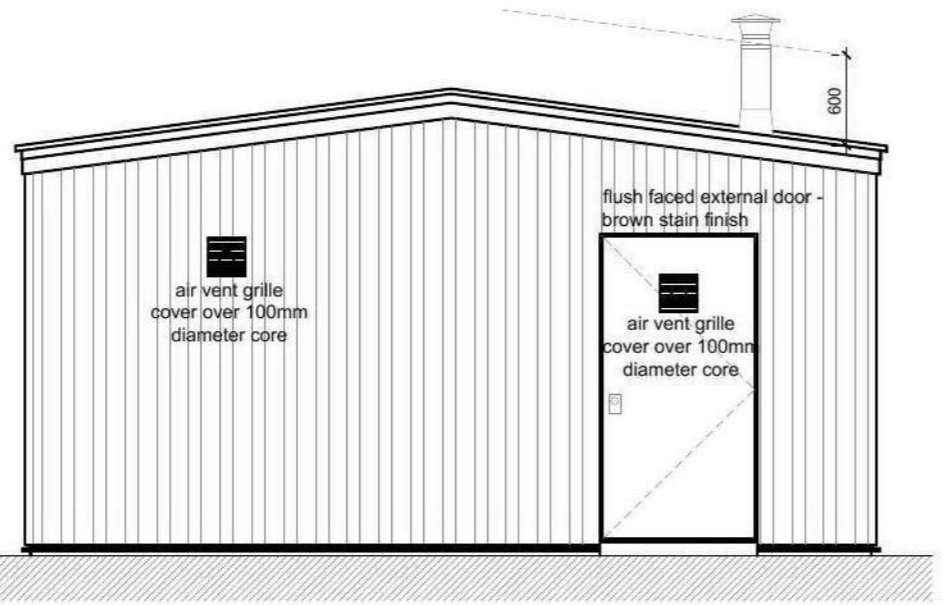
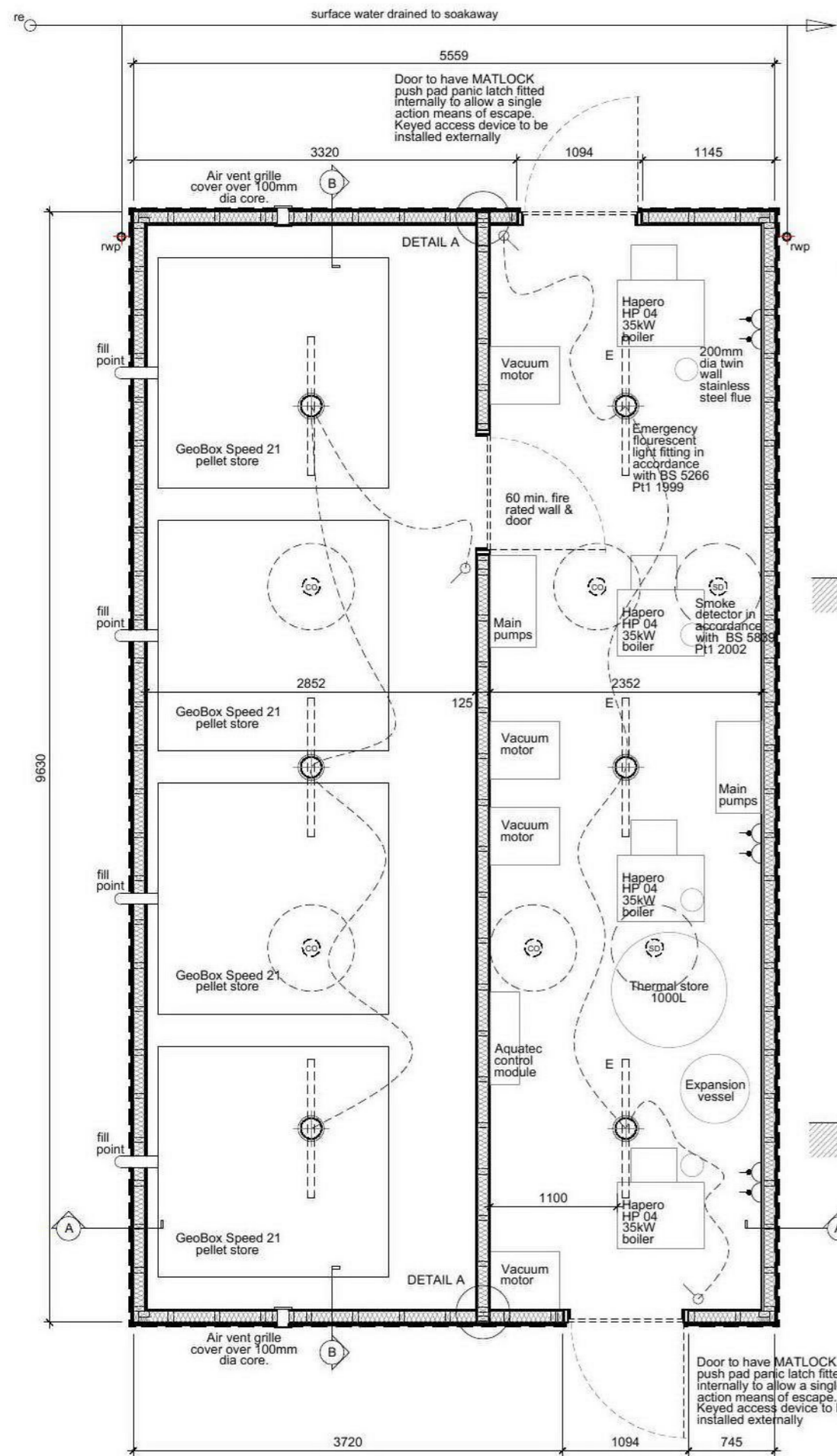
The Highland Council
Cunhaire na Gàidhealtachd

Plans, drawings and other material submitted to the local authority are protected by the copyright, designs and patents Act 1988 (Section 47).

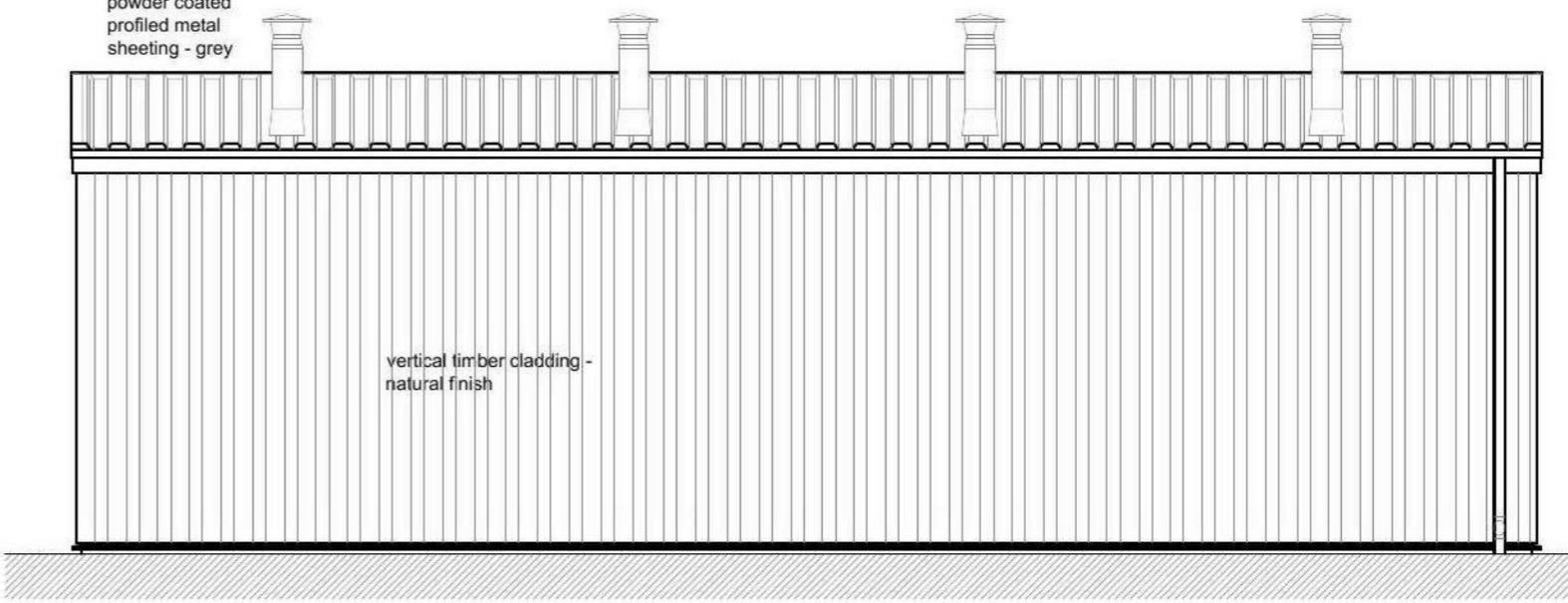
You may only use material which is downloaded and/or printed for consultation purposes, to complete current applications with previous schemes and to check whether developments have been completed in accordance with the approved plans.

Further copies must not be made without the prior permission of the copyright owner.

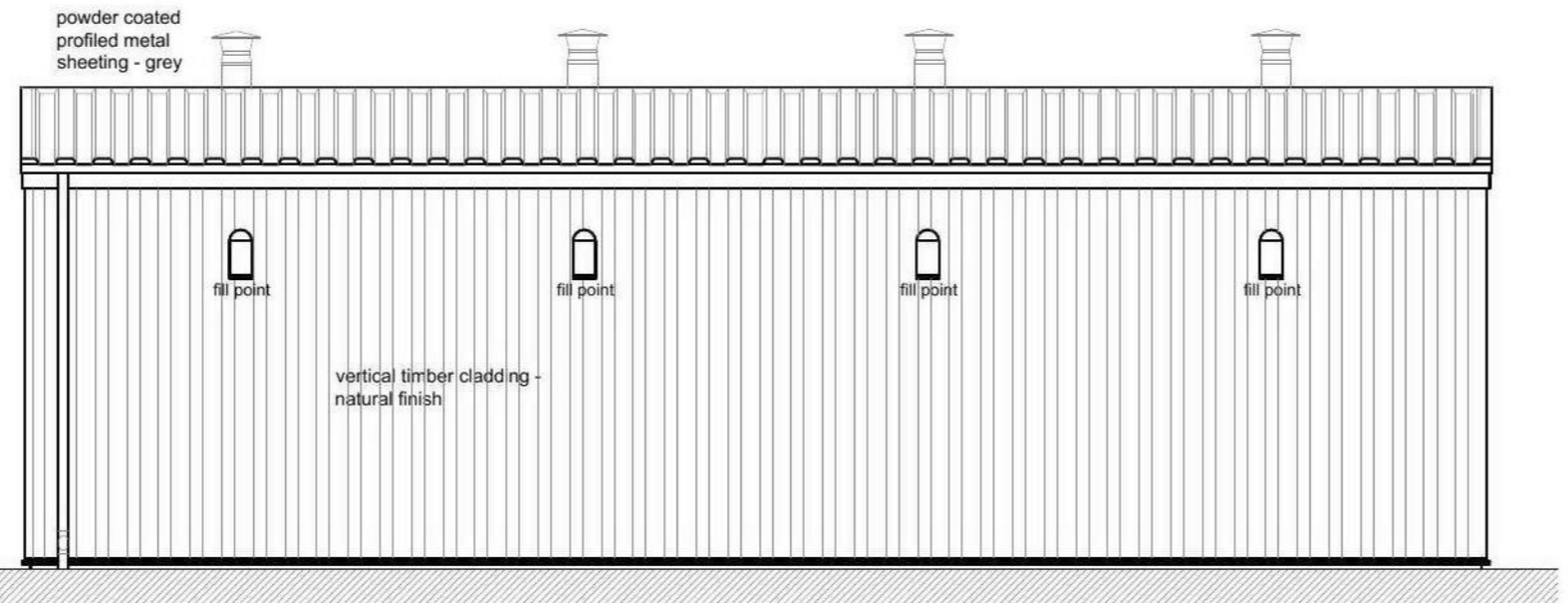




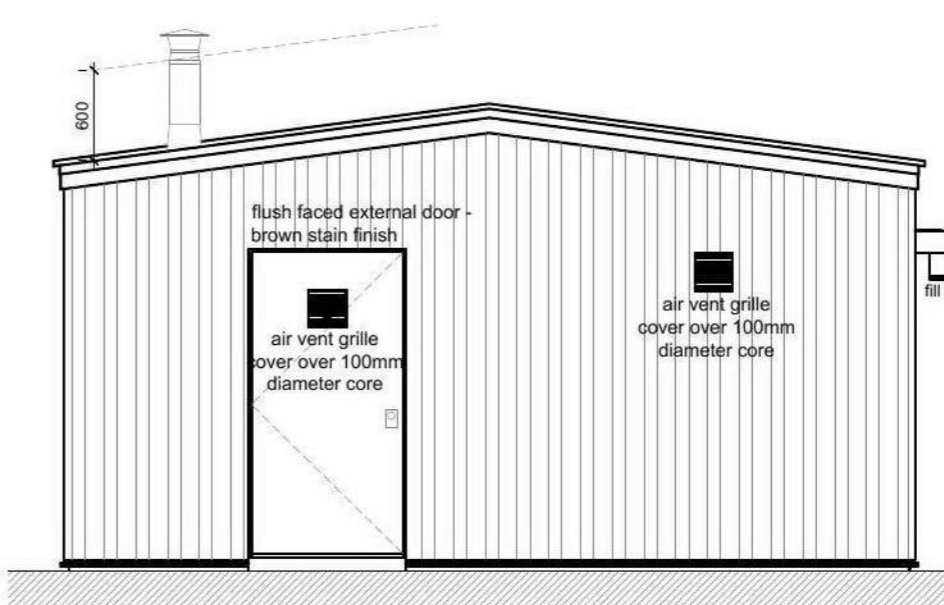
SIDE ELEVATION



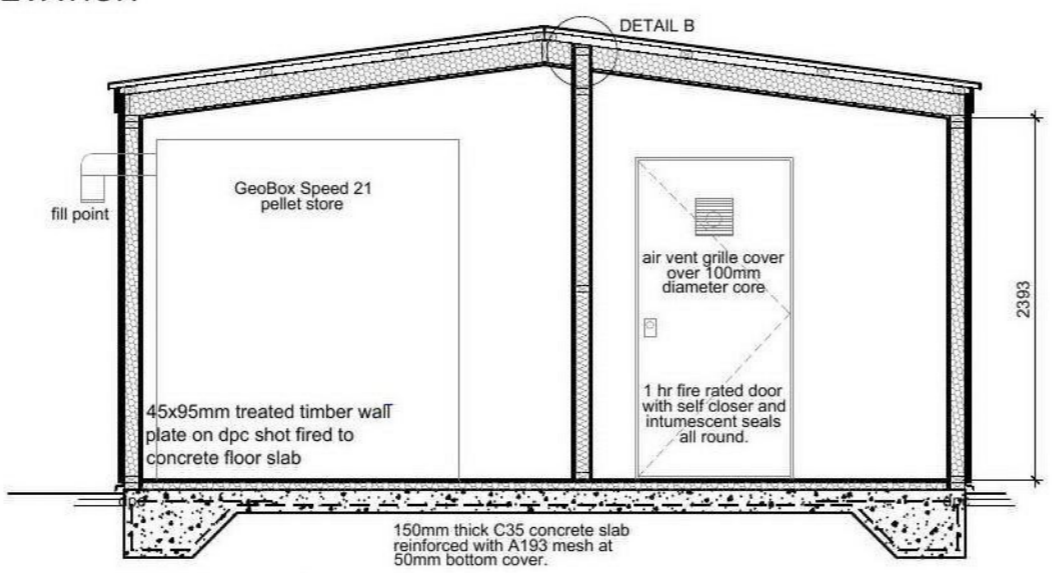
FRONT ELEVATION



FRONT ELEVATION



SIDE ELEVATION

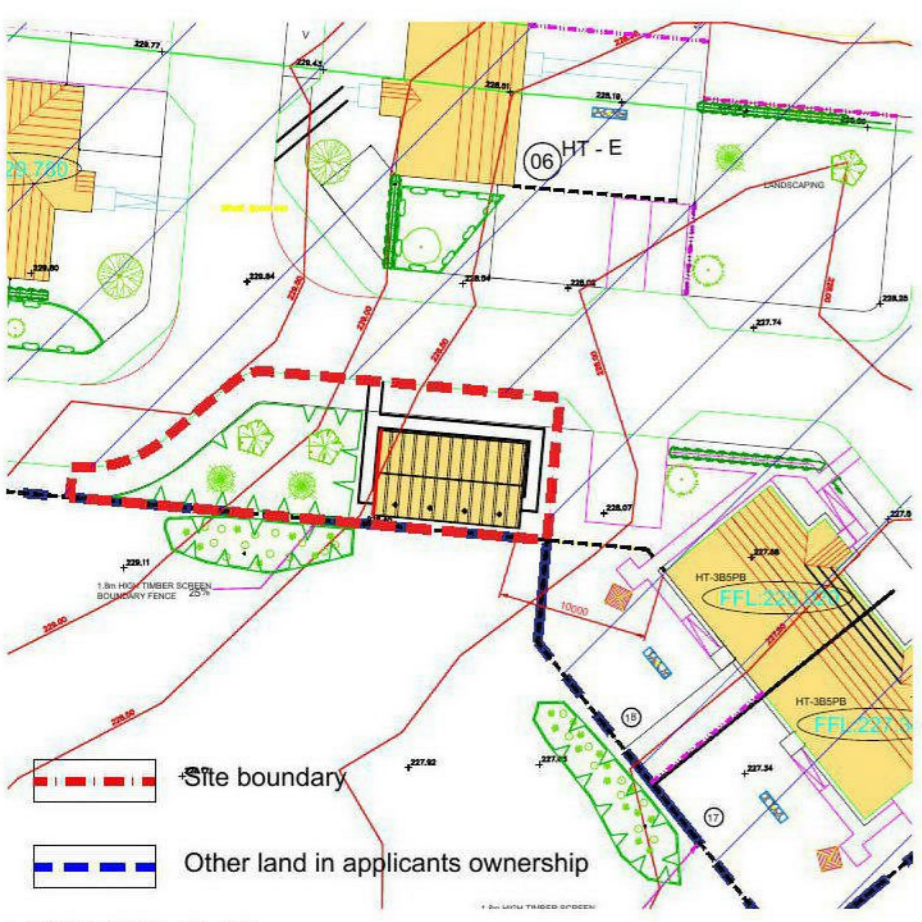


SECTION A-A

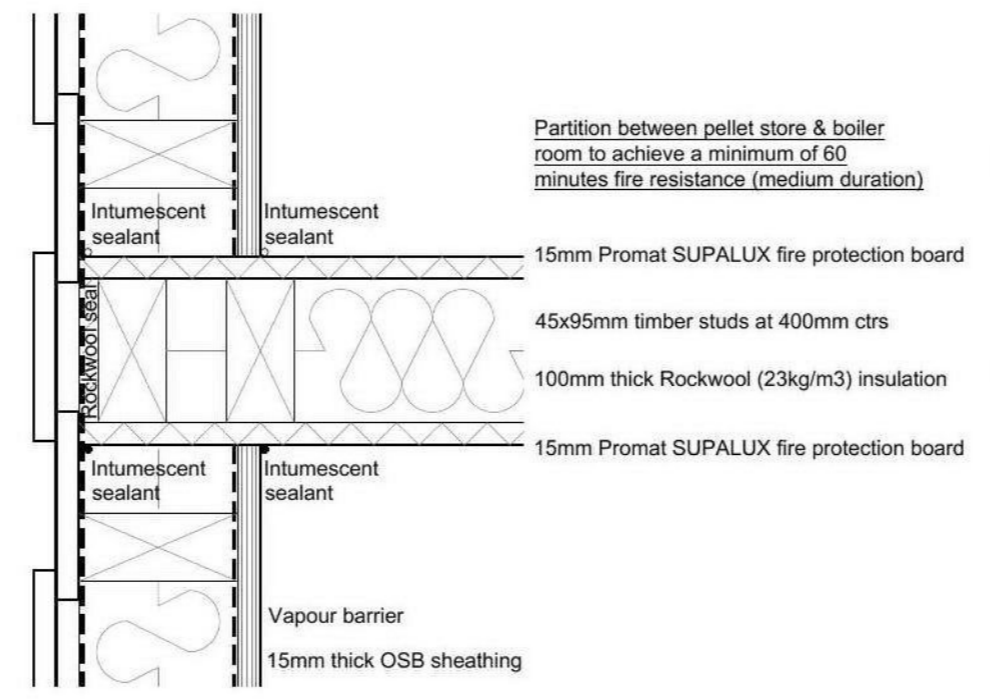
ELECTRICAL LEGEND
(TO FULLY COMPLY WITH BS7671:2008)

SWITCHES	Height	LIGHTING	Height
Light switch	1050	Pendant light fitting (Low Energy Light Bulb Fitted)	
Two way light switch	1050	OTHER ITEMS	
SOCKETS	Height	Optical smoke alarm should conform to BS EN 14604: 2005 and wired via permanent & protected circuit, interconnected to any other alarm within the dwelling. Minimum distance to light fitting 300mm.	
Twin 13amp switched socket outlet	450	Carbon Monoxide alarm conforming to BS EN 50291-1:2010 powered by a battery designed to operate for the working life of the detector. The detector will incorporate a warning device to alert the users when its working life is due to expire. Minimum distance to light fitting 300mm.	

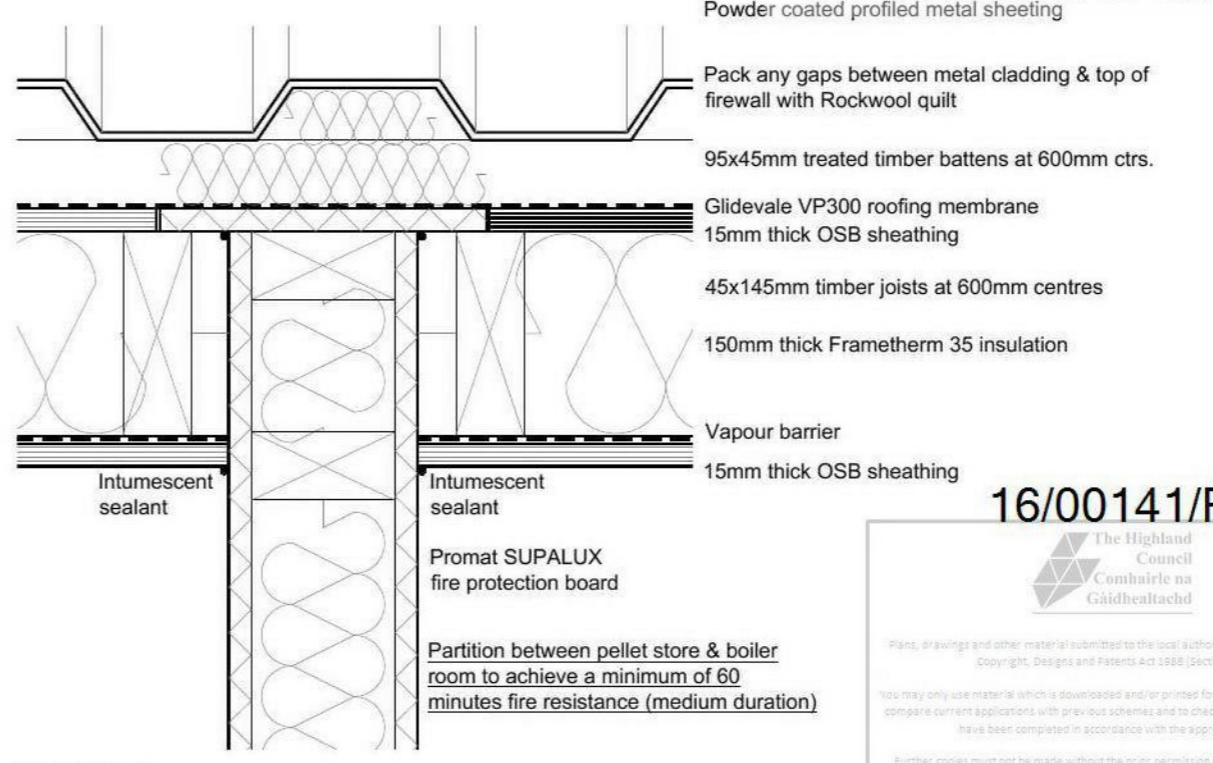
2016/0024/DET
CAIRNGORMS
NATIONAL PARK AUTHORITY
UGHDARRAS PÀIRC NÀISEANTA A' MHOAIDH RUAIDH



LOCATION PLAN



DETAIL A



DETAIL B

NOTE
Prior to formation of boiler housing - Boiler supplier / installer to confirm all dimensions are sufficient to allow installation of plant.

Specification

Floor
65mm concrete screed on top of 1200 gauge Vaisqueen DPM or equal, 150mm thick concrete floor slab on 50mm thick sand blinding on 150mm well compacted Type 1 hardcore.

Walls
Finish externally with 20mm thick treated vertical timber cladding (board on board), ensure ventilated air space behind, on Glidevale Protect TF200 breather membrane on 15mm thick OSB sheathing. Form frame using 45x95mm treated timber (C24) at 400mm centres, infill between with 100mm thick mineral fibre quilt insulation (Frametherm 35). Finish internally with 15mm thick Promat SUPALUX fire protection board on vapour barrier.

Roof
Powder coated metal sheeting (powder coated dark grey finish) on 95x45mm treated timber battens at 600mm centres on Glidevale VP300 roofing membrane on 15mm thick OSB sheathing on 45x145mm treated timber roof joists (C24) at 600mm centres. Infill between with 150mm thick mineral fibre quilt insulation (Frametherm 35). Finish to underside with 15mm thick OSB sheathing on vapour barrier.

Partitions
Form dividing partition between pellet store and boiler room using 45x95mm treated C24 timber studs at 400mm centres. Infill between studs with 100mm thick mineral fibre quilt insulation (Rockwool 23kg/m3). Finish to both sides with 15mm thick Promat SUPALUX fire protection board. Partition to give 60min fire resistance. Provide access door between boiler room and pellet store. 38x50mm firestops to be installed around access door.

Rainwater goods
Alumasc aluminium half round gutters and 68mm dia. downpipes. Gutter brackets, fixings, centres etc in strict accordance with manufacturers specifications. Fit hand hole at base of down pipe.

Boilers and Heating appliances
All biomass boilers/thermal stores/pellet store/equipment etc to be installed as per manufacturers specifications/written instructions. REHAU pre-insulated pipes will be provided for running the underground heating from the Biomass Building to the properties. All solid fuel appliances are to be constructed and installed in accordance with the requirements of BS 8303: Parts 1 to 3:1994. The auger from the pellet store to the boiler is to be installed in accordance with the safety standards described in BS EN 303-5:1999. Flue pipe designation T400 N2 Gxx in accordance with BS EN 1443:2003.

Doors
Fire Escape Doors
Doors across escape routes to be fitted with a lock which is readily operable by means of a thumbturn to comply with BS EN 1125.

Fire Resistant Door
The fire door between pellet store and boiler room is to have 1.5 pairs steel butt hinges, fitted with intumescent fire and smoke seals, rebated into door frame. The door is to be fitted with a self closing device and is to be in accordance with the recommendations in the CoP 'Hardware for Fire and Escape Doors' and will achieve a power size 3 to BS EN 1154.

Carbon Monoxide Detection
Carbon monoxide detectors are to comply with BS EN 50291-1:2010 and be powered by a battery designed to operate for the working life of the detector. The detector should incorporate a warning device to alert the users when its working life is due to expire.

General
Electrical work to client/boiler manufacturers specifications, to be designed, constructed, installed and tested to ensure it is in accordance with the recommendations of BS 7671:2008 to comply with the current IEE regulations.

REV	DATE	DESCRIPTION	DRN	CHD

Bracewell Stirling

● 38 WALKER TERRACE, TILlicOULTRY, FK13 6EF
TEL: 01259 750301

○ 5 NESS BANK, INVERNESS, IV2 4SF
TEL: 01463 233760

RESIDENTIAL DEVELOPMENT
DESHAR ROAD, BOAT OF GARTEN
DAVALL DEVELOPMENTS

TITLE
BIOMASS BOILER HOUSING

16/00141/EUL

SCALE: 1:5, 1:50 & 1:500
DATE: 13/11/2015
PURPOSE: BW
BY: PAPER
IL: A2

DWG NO.-REV: 2532-300