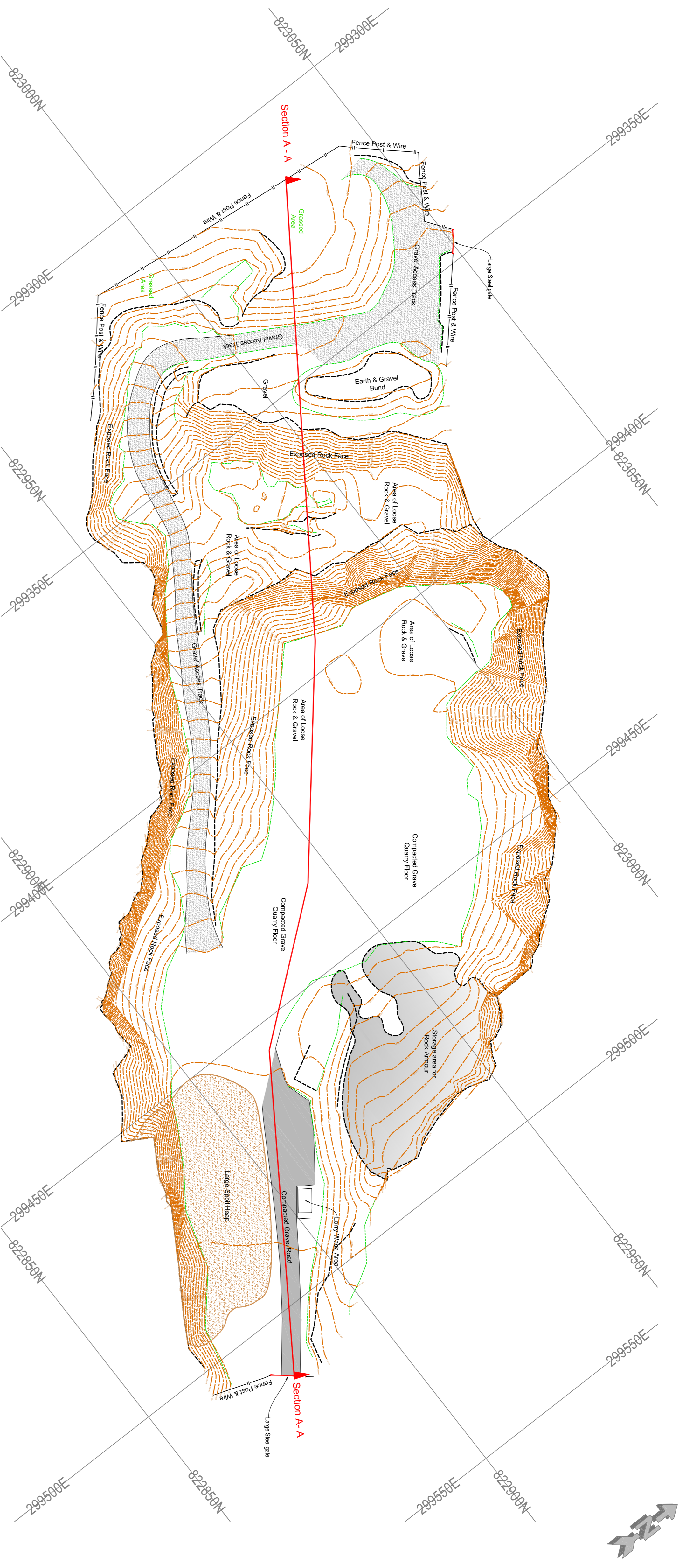


AGENDA ITEM 6

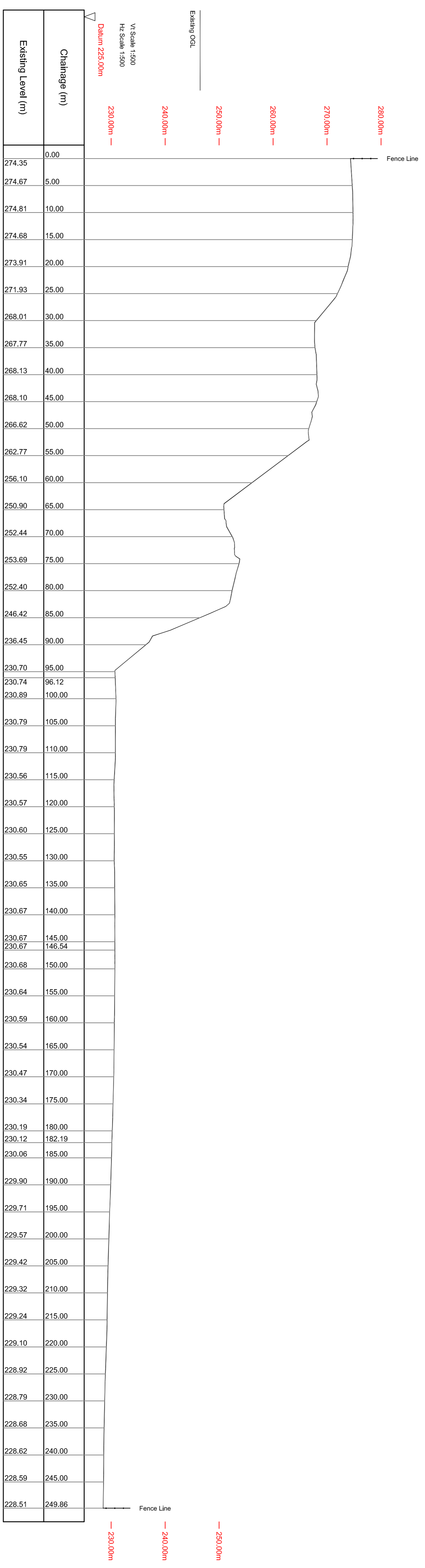
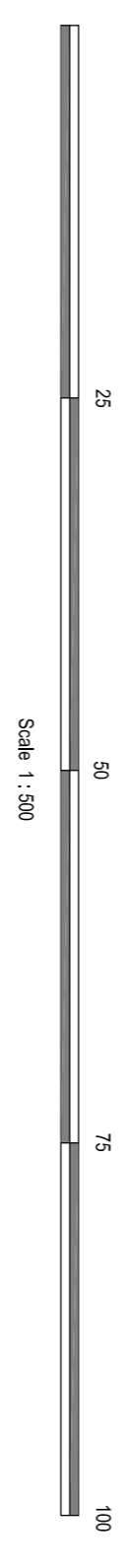
APPENDIX I

2018/0140/DET

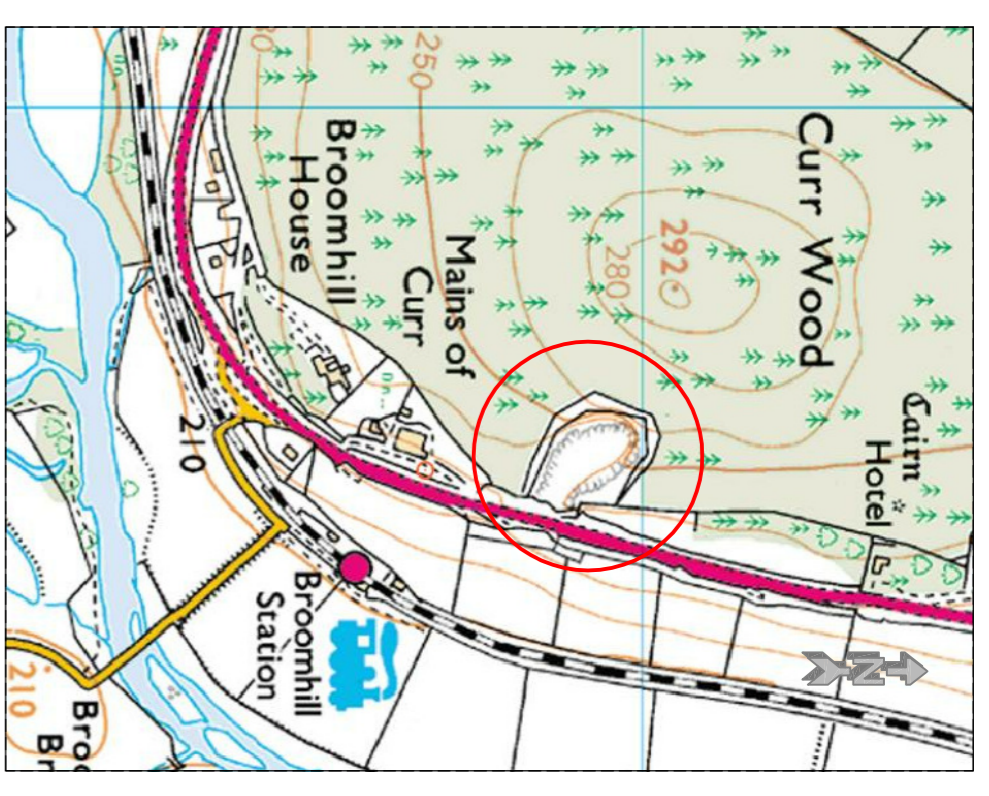
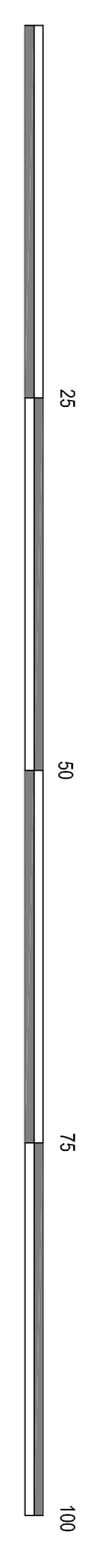
PLANS



Broomhill Quarry Topographical Survey
 Site Layout Plan
 Scale - (1:500)



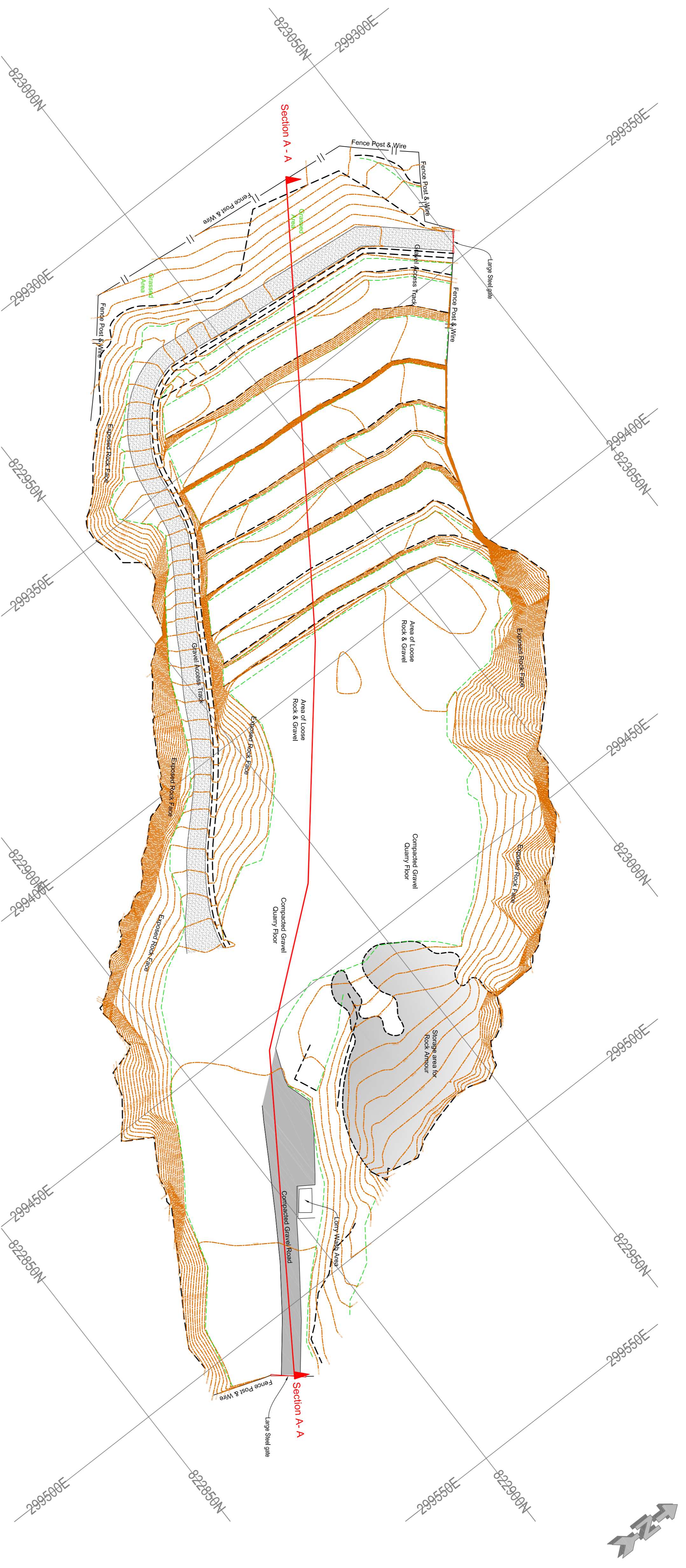
Section A - A
 Longitudinal Section through Existing Ground Profile
 V1 Scale - (1:500)
 HZ Scale - (1:500)



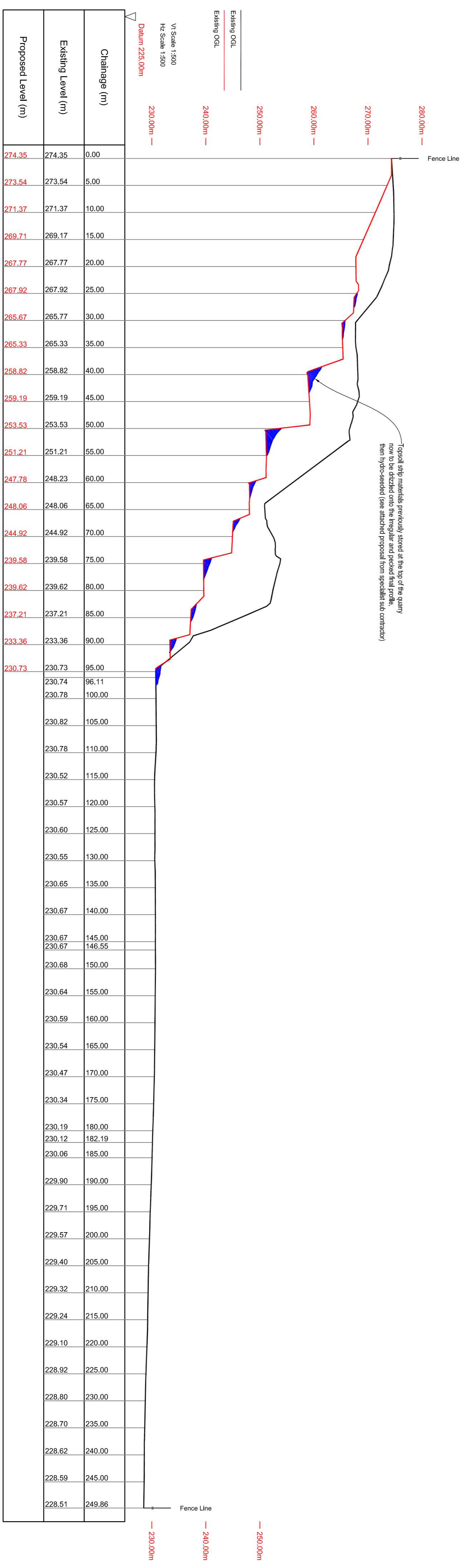
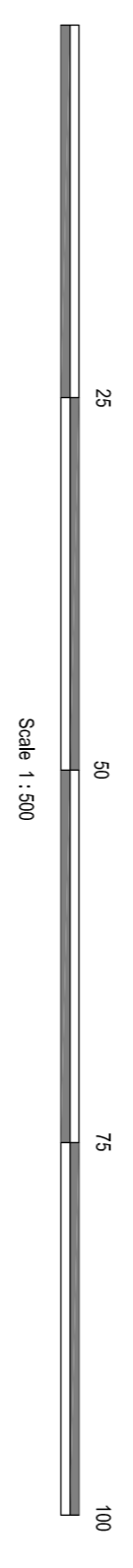
Location plan
 (NOT to Scale)

Drawing Status FOR APPROVAL	
SITE LAYOUT	
Topographical Survey & Longitudinal Section Broomhill Quarry, near Dulinain Bridge	
CLIENT: Allan Munro Construction Ltd Aviemore	
DRAWING NUMBER: CTCH-BRO-01	REVISION:
SCALE (@ A1): 1 : 500	
DRAWN BY:	
LAND SURVEYORS SETTING OUT ENGINEERS	
SURVEYED BY: GR & LT	
FOURNAVEN MOUR OF ORKD 01463 5311400	
DATE DRAWING PRODUCED: 7th DEC 2011	OUR JOB REF: 1365

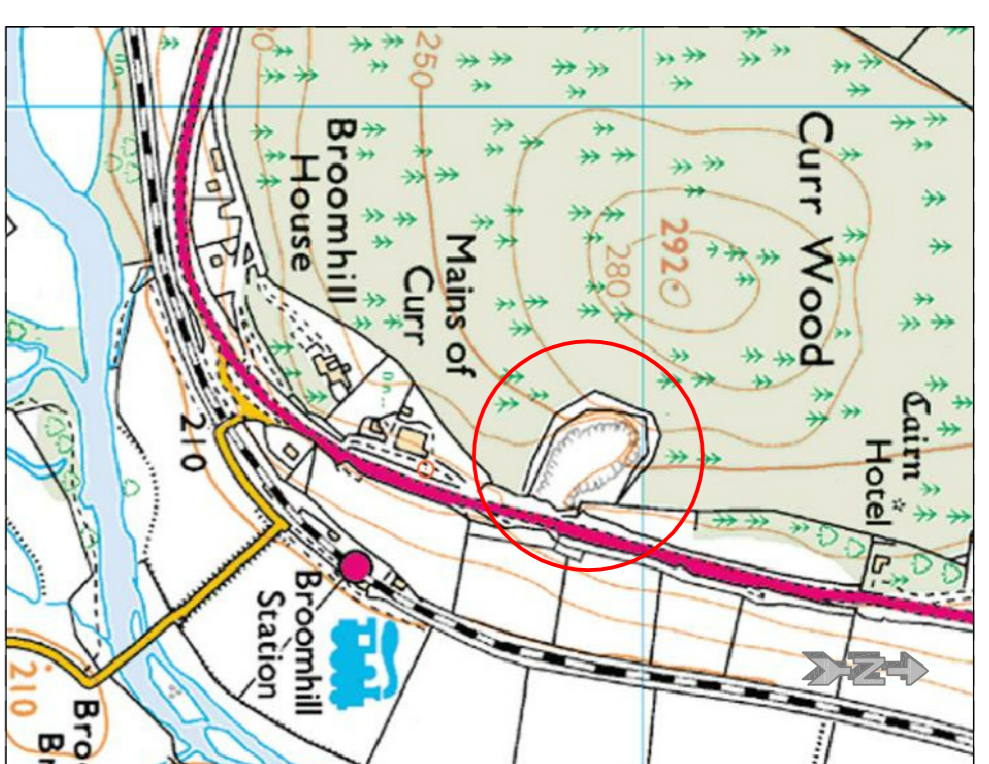
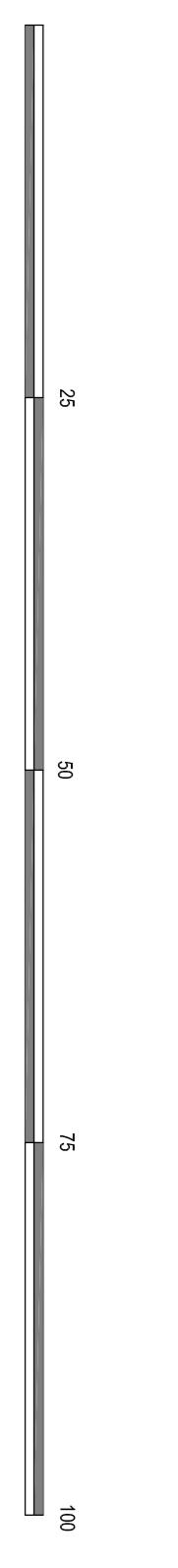




Broomhill Quarry - Final Site layout
 Site Layout Plan
 Scale - (1:500)



Section A - A
 Longitudinal Section through Final Ground Profile
 V/L Scale - (1:500)
 H/Z Scale - (1:500)



Location plan
 (NOT to Scale)

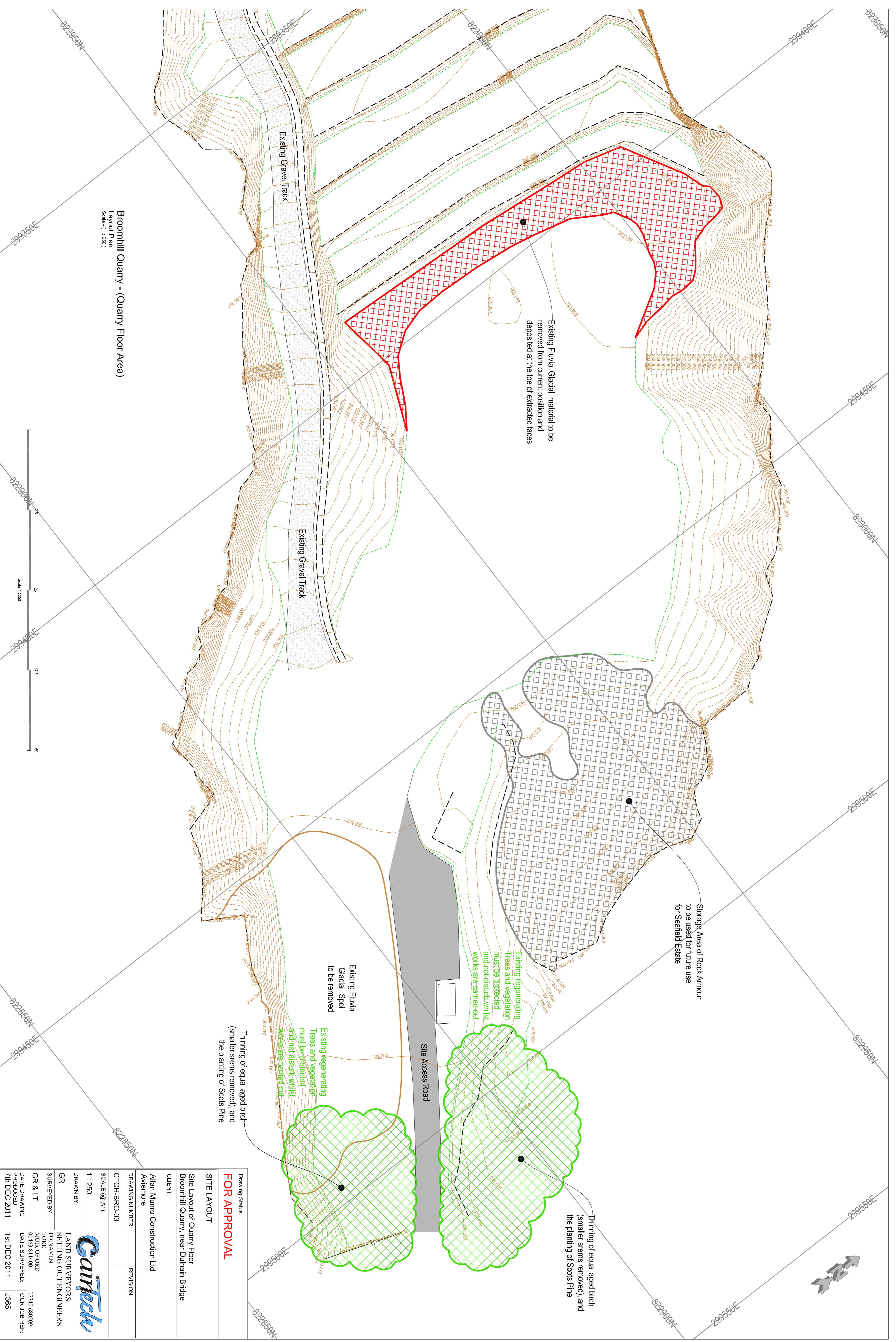
Drawing Status
FOR APPROVAL

SITE LAYOUT

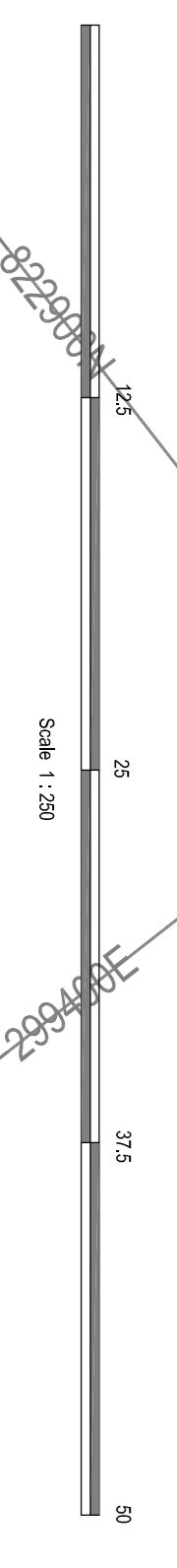
Final Site Layout & Longitudinal Section
 Broomhill Quarry, near Duhain Bridge
 CLIENT:
 Allan Munro Construction Ltd
 Aviemore

DRAWING NUMBER:	CTCH-BRO-02	REVISION:	
SCALE (@ A1):	1 : 500		
DRAWN BY:	GR	LAND SURVEYORS	GarTech
SURVEYED BY:	GR & LT	SETTING OUT ENGINEERS	FOINAVEN
DATE DRAWING PRODUCED:	7th DEC 2011	DATE SURVEYED:	OUR JOB REF: 1365

GR
 LAND SURVEYORS
 SETTING OUT ENGINEERS
 FOINAVEN
 TORR
 MOIR OF ORK
 01463 5311400
 07740 680509
 DATE SURVEYED:
 1st DEC 2011
 OUR JOB REF:
 1365



Broomhill Quarry - (Quarry Floor Area)
 Layout Plan
 Scale - (1:250)



Storage Area of Rock Armour
 to be used for future use
 for Seafield Estate

Existing regenerating
 Trees and vegetation
 must be protected
 and not disturb whilst
 works are carried out

Existing Fluvial
 Glacial Spoil
 to be removed

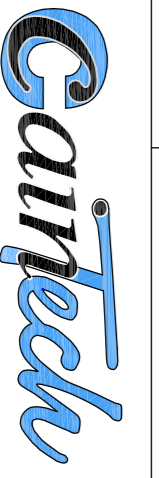
Thinning of equal aged birch
 (smaller stems removed), and
 the planting of Scots Pine

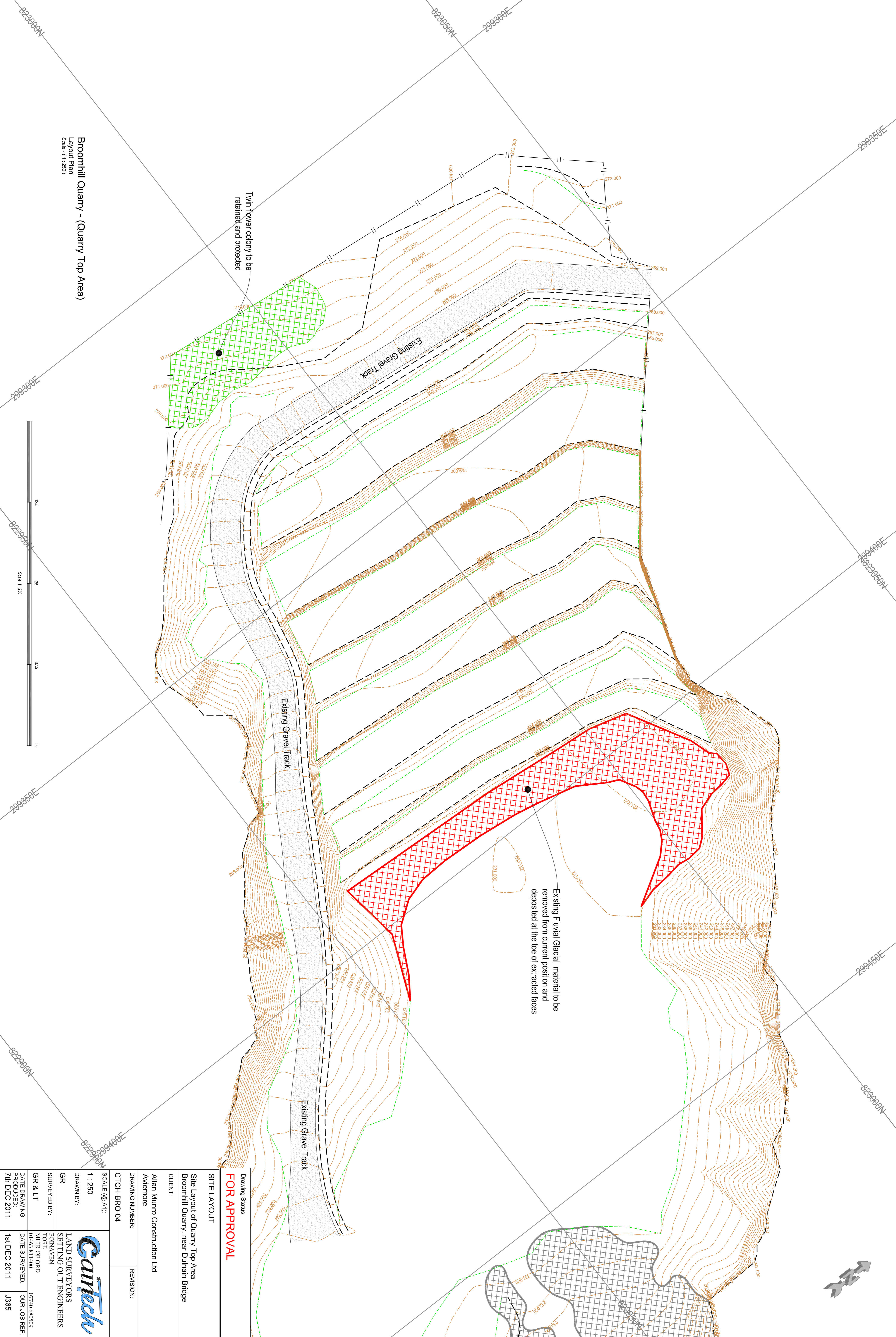
Existing regenerating
 Trees and vegetation
 must be protected
 and not disturb whilst
 works are carried out

Thinning of equal aged birch
 (smaller stems removed), and
 the planting of Scots Pine

Site Access Road

Drawing Status FOR APPROVAL	
SITE LAYOUT	
Site Layout of Quarry Floor Broomhill Quarry, near Duhainn Bridge	
CLIENT: Allan Munro Construction Ltd Abermore	
DRAWING NUMBER: CTCH-BRO-03	REVISION:
SCALE (@ A1): 1 : 250	
DRAWN BY: GR	LAND SURVEYORS SETTING OUT ENGINEERS
SURVEYED BY: GR & LT	FORNAAVEN TORE
DATE DRAWING PRODUCED: 7th DEC 2011	DATE SURVEYED: OUR JOB REF: 07740 680509 J365





Broomhill Quarry - (Quarry Top Area)
 Layout Plan
 Scale - (1:250)

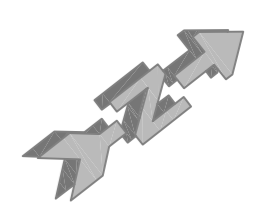
Twin flower colony to be retained and protected

Existing Gravel Track

Existing Gravel Track

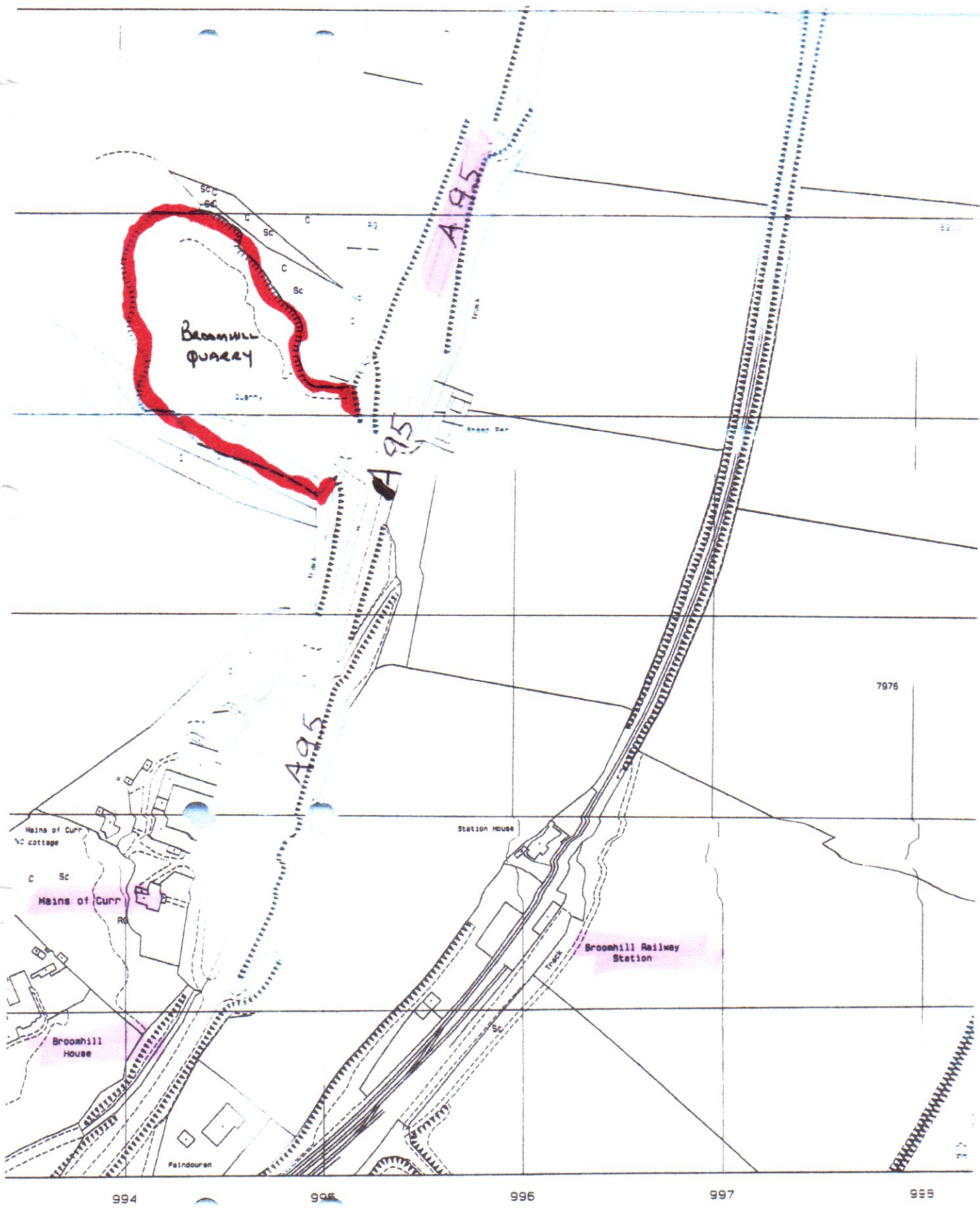
Existing Gravel Track

Existing Fluvial Glacial material to be removed from current position and deposited at the toe of extracted faces

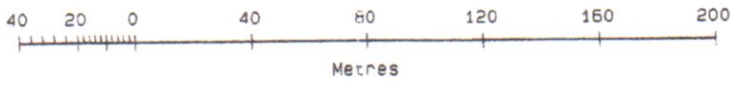


Drawing Status FOR APPROVAL	
SITE LAYOUT	
Site Layout of Quarry Top Area Broomhill Quarry, near Duhaimin Bridge	
CLIENT: Allan Munro Construction Ltd Aviemore	
DRAWING NUMBER: CTCH-BRO-04	REVISION:
SCALE (@ A1): 1 : 250	
DRAWN BY: GR	LAND SURVEYORS SETTLING OUT ENGINEERS FONAIVEN TORE
SURVEYED BY: GR & LT	MUR OF ORD 01465 811400 07740 680509
DATE DRAWING PRODUCED: 7th DEC 2011	OUR JOB REF: J365
DATE SURVEYED: 1st DEC 2011	





BROOMHILL QUARRY
 DULNAIN BRIDGE,
 PH 26 3 LX
 EASTING 299438
 NORTHING 822944.



Scale 1: 2500

National Grid sheet 822944
 of this Superplan 1:2500
 The representation of the