

AGENDA ITEM 6

APPENDIX 2

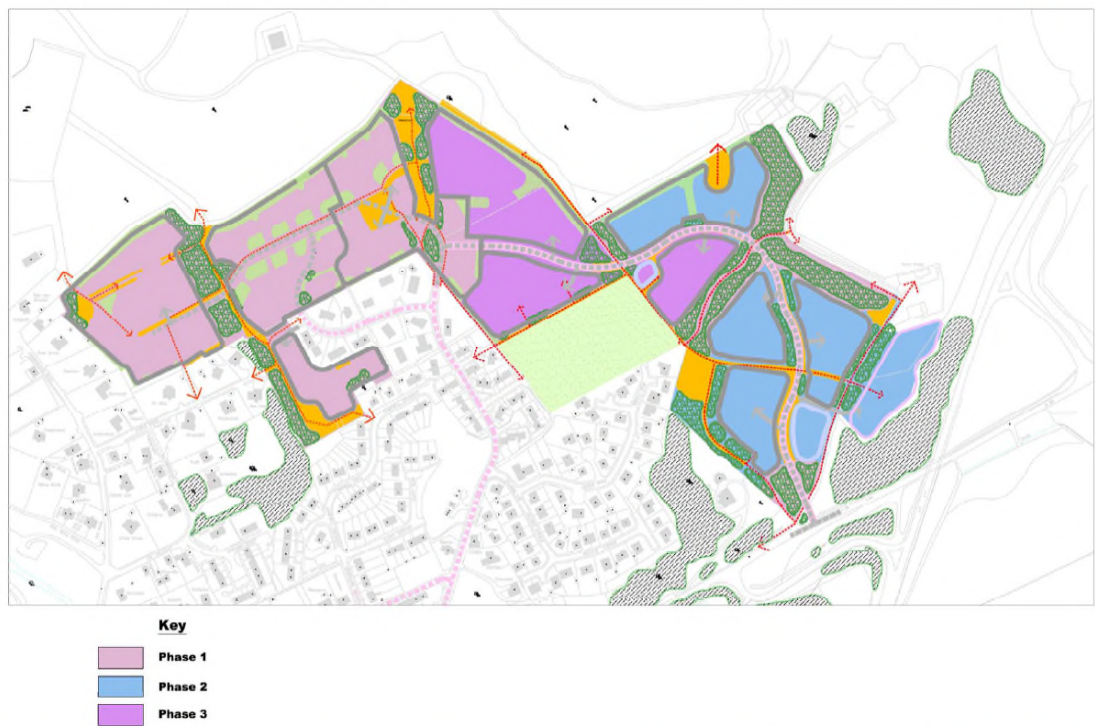
2015/0316/DET

ILLUSTRATIONS

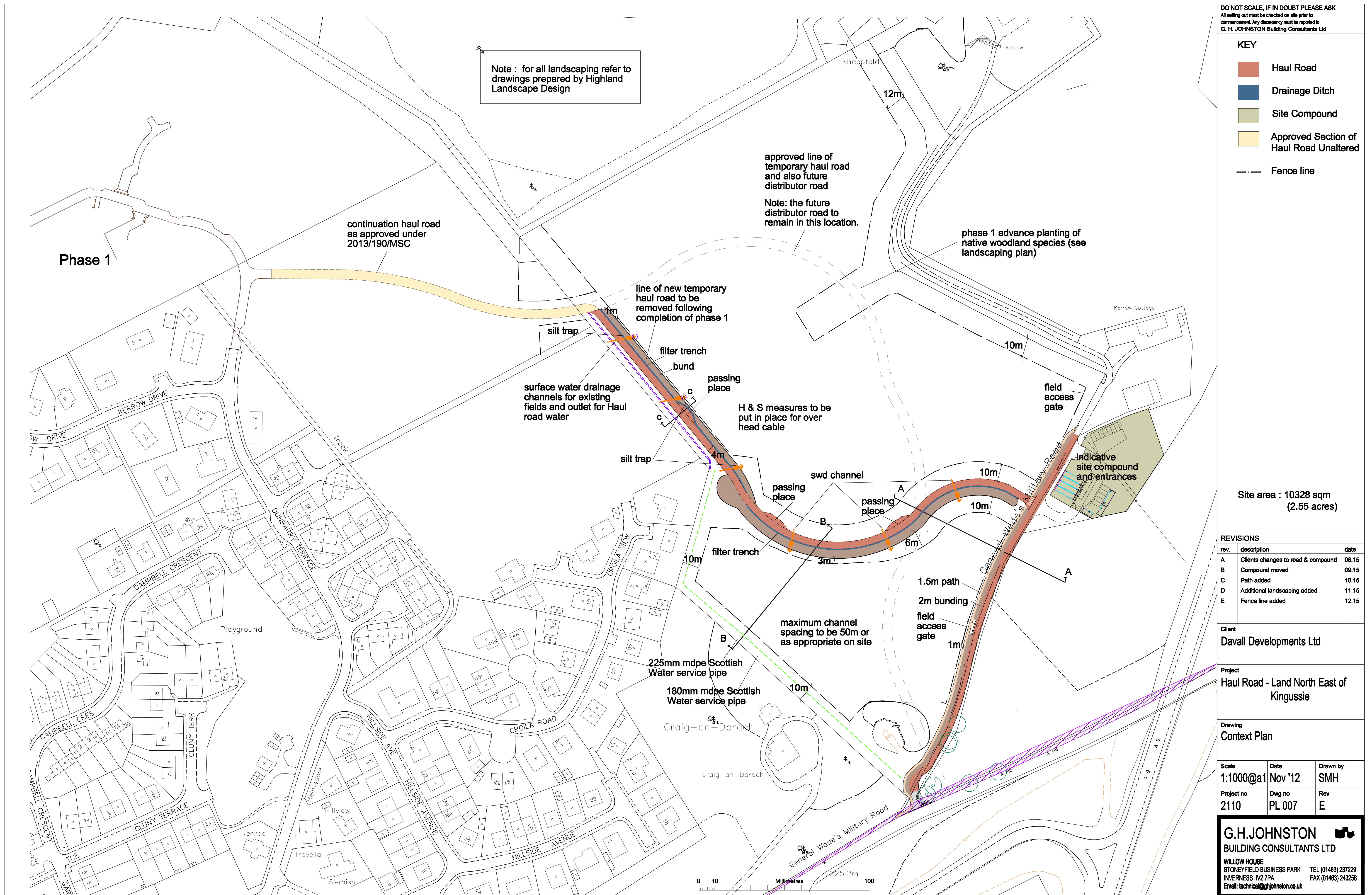
Master Plan Extract

Overall Building Development Phasing Plan

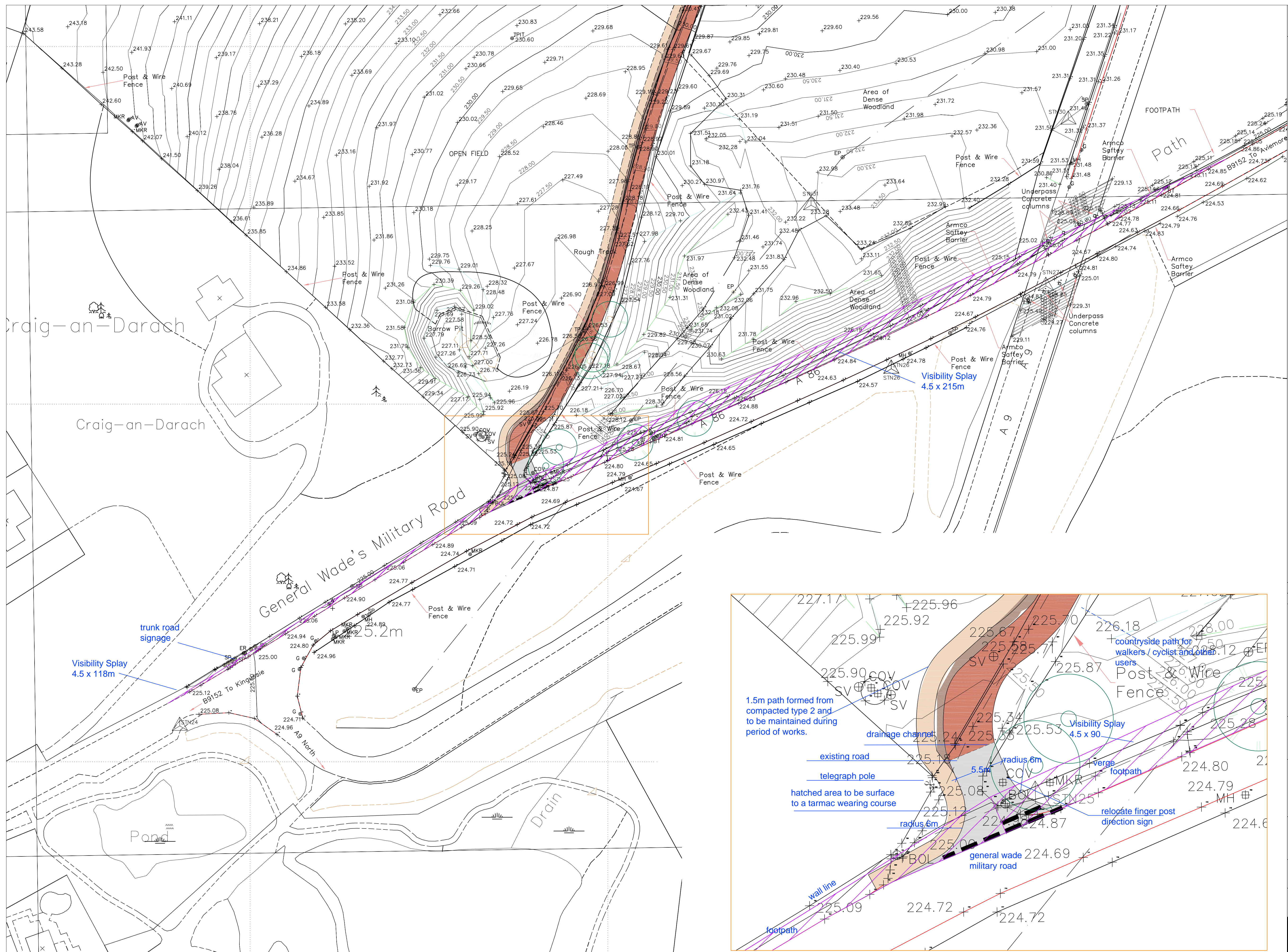
Figure 16



Context Plan



Junction

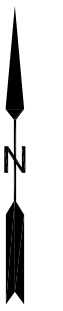


VISIBILITY SPLAY
scale 1:500

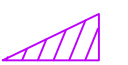
ENTRANCE DETAIL
scale 1:200



All setting out must be checked on site prior to commencement. Any discrepancy must be reported to G. H. JOHNSTON Building Consultants Ltd



KEY



visibility splay

trunk road signage

REVISIONS

rev.	description	date
A	Alts to visibility splay	10.15
B	Path width changed from 2m to 1.5m	11.15

Client

Davall Developments Ltd

Project

Haul Road - Land North East of
Kingussie

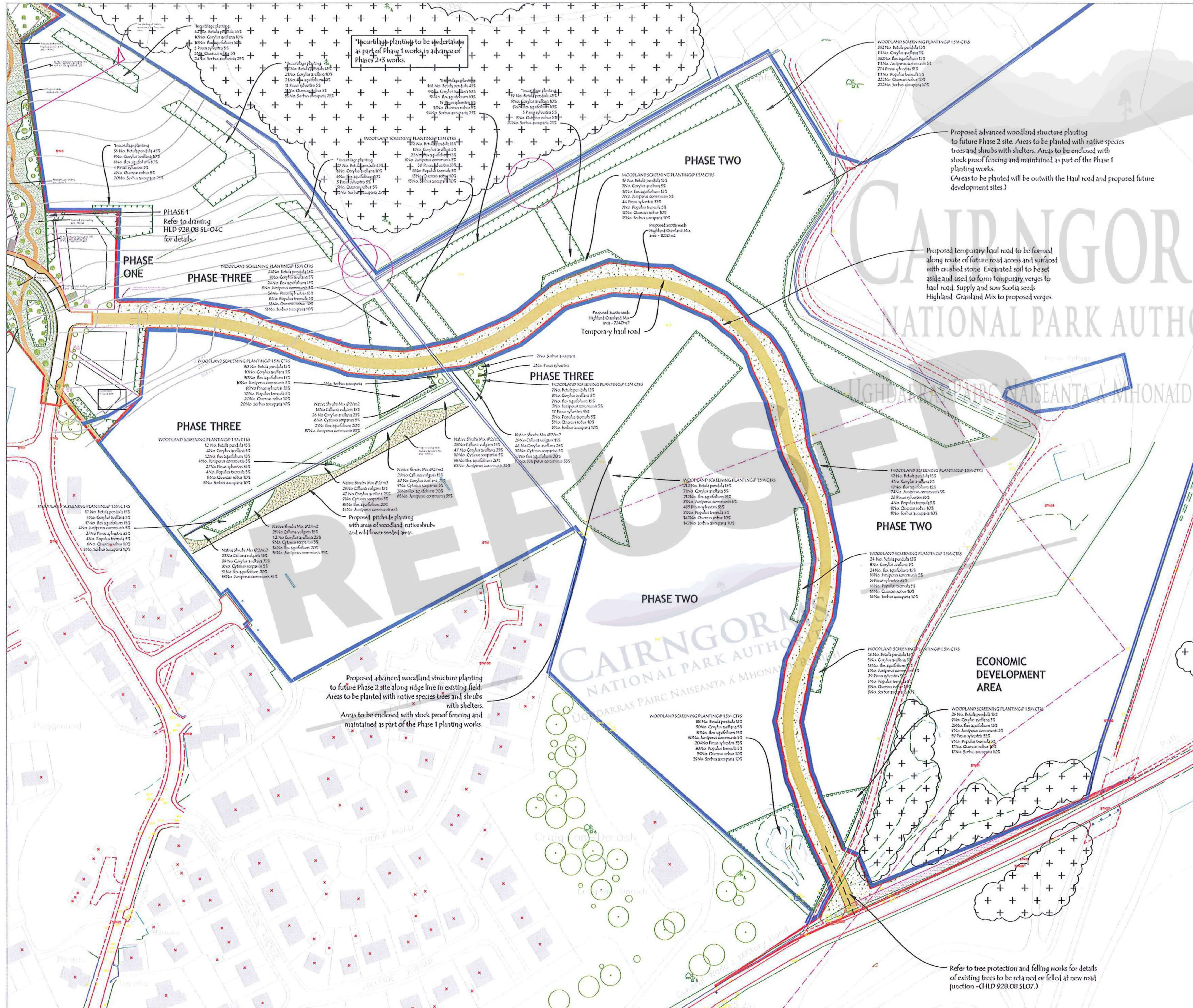
Drawing

Temporary Access Junction

Scale various@A1	Date Nov '12	Drawn by SMH
Project no 2110	Dwg no PL 010	Rev B

G.H.JOHNSTON 
BUILDING CONSULTANTS LTD

WILLOW HOUSE
STONEFIELD BUSINESS PARK
INVERNESS IV2 7PA
Email: technical@ghjohnston.co.uk
TEL (01463) 237229
FAX (01463) 243258



KINGUSSIE MASTERPLAN - PHASE 2 - ADVANCED WOODLAND STRUCTURE PLANTING PROPOSALS- 1:1000

NOTE
For Phase 2 advanced woodland structure planting schedule and planting specification notes refer to drawing HLD 928.08 SL-04B.
For details of haul road junction including tree felling and replacement planting refer to HLD drawing 928.08 SL-07.

REVISIONS

A: 26.8.15- Advanced structure planting and advanced incurrlage planting increased following meeting with CPNA (20.8.15).KW

ALL DIMENSIONS TO BE CHECKED ON SITE
WORK TO FIGURED DIMENSIONS ONLY
REPORT DISCREPANCIES TO THE LANDSCAPE ARCHITECT
AT ONCE BEFORE PROCEEDING

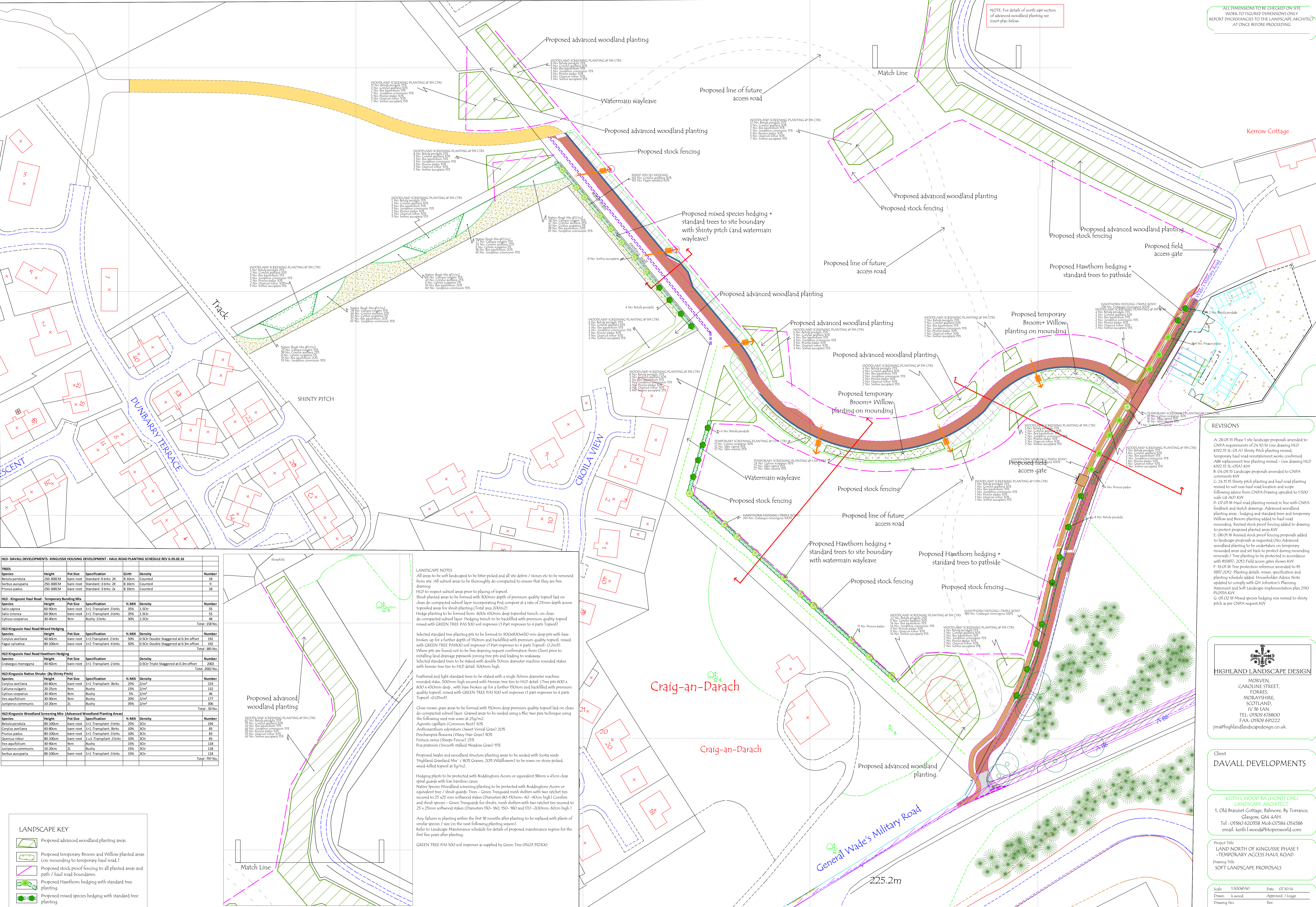
HIGHLAND LANDSCAPE DESIGN
MORVEN,
CAROLINE STREET,
FORRES,
MORAYSHIRE,
SCOTLAND,
IV 36 1AN.
TEL: 01309 676800
FAX: 01309 676513
jim@highlandlandscapedesign.co.uk

Client
DAVALL DEVELOPMENTS

KEITH L WOOD BA (HONS) CMLI
LANDSCAPE ARCHITECT
1, Old Branziet Cottage, Balmore, By Torrance,
Glasgow, G64 4AH.
Tel : 01360 620358 Mob: 07584 054586
email: keith.l.wood@btopenworld.com

Project Title
**KINGUSSIE MASTERPLAN, PHASE 2
ADVANCED STRUCTURE PLANTING WORKS.**
Drawing Title
**PHASE 2 ADVANCED SOFT LANDSCAPE
PROPOSALS**

Scale	1:1000@A1	Date	10.06.13
Drawn	k wood	Approved	J Legge
Drawing No.		Rev.	
HLD 928.08 SL-06		A	



HLD- DAVALL DEVELOPMENTS- KINGUSSIE HOUSING DEVELOPMENT- HAUL ROAD PLANTING SCHEDULE REV G 05.02.16							
TREES	Species	Height	Pot Size	Specification	Girth	Density	Number
HLD- Kingussie Haul Road- Temporary Bundling Mix	Betula pendula	250-300CM	bare-root	Standard 6 brks: 2X	8-10cm	Counted	18
	Sorbus aucuparia	250-300CM	bare-root	Standard 3 brks: 2X	8-10cm	Counted	9
	Prunus padus	250-300CM	bare-root	Standard 3 brks: 2X	8-10cm	Counted	18
HLD- Kingussie Haul Road- Temporary Bundling Mix	Salix caprea	60-90cm	bare-root	1+1: Transplant 3 brks	35% 1.5Cr	Density	55
	Salix cinerea	60-90cm	bare-root	1+1: Transplant 3 brks	35% 1.5Cr	Density	55
	Cytisus scoparius	30-40cm	9cm	Bushy 3 brks	30% 1.5Cr	Density	48
							Total: 158 No.
HLD Kingussie Haul Road Mixed Hedging	Species	Height	Pot Size	Specification	% MIX	Density	Number
	Cornus axillana	60-80cm	bare-root	1+1: Transplant 3 brks	50%	0.5Cr Double Staggered at 0.3m offset	192
	Fagus sylvatica	80-100cm	bare-root	1+2: Transplant 4 brks	50%	0.5Cr Double Staggered at 0.3m offset	192
							Total: 385 No.
HLD Kingussie Haul Road Hawthorn Hedging	Species	Height	Pot Size	Specification	Density	Number	
	Crataegus monogyna	40-60cm	bare-root	1+1: Transplant 2 brks	0.5Cr Triple Staggered at 0.3m offset	2002	
							Total: 2002 No.
HLD Kingussie Native Shrubs (By Shinty Pitch)	Species	Height	Pot Size	Specification	% MIX	Density	Number
	Cornus axillana	60-80cm	bare-root	1+1: Transplant 3 brks	25%	2Cr	219
	Calluna vulgaris	20-25cm	9cm	Bushy	15%	2Cr	132
HLD Kingussie Woodland Screening Mix- (Advanced Woodland Planting Areas)	Species	Height	Pot Size	Specification	% MIX	Density	Number
	Betula pendula	80-100cm	bare-root	1+1: Transplant 3 brks	25%	3Cr	194
	Cornus axillana	60-80cm	bare-root	1+1: Transplant 3 brks	10%	3Cr	83
HLD Kingussie Woodland Screening Mix- (Advanced Woodland Planting Areas)	Species	Height	Pot Size	Specification	% MIX	Density	Number
	Prunus padus	80-100cm	bare-root	1+1: Transplant 3 brks	10%	3Cr	83
	Quercus robur	80-100cm	bare-root	1+1: Transplant 3 brks	10%	3Cr	83
HLD Kingussie Woodland Screening Mix- (Advanced Woodland Planting Areas)	Species	Height	Pot Size	Specification	% MIX	Density	Number
	Ilex aquifolium	30-40cm	9cm	Bushy	15%	3Cr	118
	Juniperus communis	10-20cm	9cm	Bushy	15%	3Cr	118
HLD Kingussie Woodland Screening Mix- (Advanced Woodland Planting Areas)	Species	Height	Pot Size	Specification	% MIX	Density	Number
	Sorbus aucuparia	80-100cm	bare-root	1+1: Transplant 3 brks	15%	3Cr	118
							Total: 797 No.

LANDSCAPE KEY

- Proposed advanced woodland planting areas.
- Proposed temporary Broom and Willow planted areas (on mounding to temporary haul road.)
- Proposed stock proof fencing to all planted areas and path / haul road boundaries.
- Proposed Hawthorn hedging with standard tree planting.
- Proposed mixed species hedging with standard tree planting.

NORTH EAST INSERT PLAN 1:500

LANDSCAPE NOTES

All areas to be soft landscaped to be litter picked and all site debris / stones etc to be removed from site. All subsoil areas to be thoroughly de-compacted to ensure that they are free draining.

HLD to topsoil subsoil areas prior to placing of topsoil.

Shrub planted areas to be formed with 300mm depth of premium quality topsoil laid on clean de-compacted subsoil layer incorporating Peat compost at a rate of 25mm depth across topsoiled areas for shrub planting (Total area 200m²).

Hedge planting to be formed from 600x450mm deep topsoiled trench, on clean de-compacted subsoil layer. Hedging trench to be backfilled with premium quality topsoil mixed with GREEN TREE PAS100 soil improver (1 Part improver to 4 parts Topsoil).

Selected standard tree planting pits to be formed to 900x300x50 mm deep pits with base broken up for a further depth of 150mm and backfilled with premium quality topsoil, mixed with GREEN TREE PAS100 soil improver (1 Part improver to 4 parts Topsoil - 0.2m³).

Where pits are found not to be free draining request confirmation from Client prior to installing land drainage pipework joining tree pits and leading to soakaway.

Selected standard trees to be staked with double 50mm diameter machine rounded stakes with hessian tree ties to HLD detail. 500mm high.

Fathered and light standard trees to be staked with a single 50mm diameter machine rounded stake, 500mm high secured with Hessian tree ties to HLD detail. (Tree pits 600 x 600 x 450mm deep, with base broken up for a further 150mm and backfilled with premium quality topsoil, mixed with GREEN TREE PAS 100 soil improver (1 part improver to 4 parts Topsoil - 0.05m³).

Close mown grass areas to be formed with 150mm deep premium quality topsoil laid on clean de-compacted subsoil layer. Grassed areas to be seeded using a Blec two pass technique using the following seed mix sown at 25g/m²:

- Agrostis capillaris (Common Bent) 10%
- Anthoxanthum odoratum (Sweet Vernal Grass) 20%
- Deschampsia flexuosa (Wavy Hair Grass) 30%
- Festuca ovina (Sheep Fescue) 25%
- Poa pratensis (Smooth stalked Meadow Grass) 15%

Proposed Swales and woodland structure planting areas to be seeded with Scotts seeds 'Highland Grassland Mix' (80% Grasses, 20% Wildflowers) to be sown on stone picked, weed-killed topsoil at 5g/m².

Hedging plants to be protected with Roddingtons Acorn or equivalent 88mm x 45cm clear spiral guards with low bamboo canes.

Native Species Woodland screening planting to be protected with Roddingtons Acorn or equivalent tree / shrub guards: Trees - Green Treeguard mesh shelters with two ratchet ties secured to 25 x25 mm softwood stakes (Diameters 80-110mm- 40 - 90cm high) Conifers and shrub species - Green Treeguard for shrubs, mesh shelters with two ratchet ties secured to 25 x 25mm softwood stakes (Diameters 150- 160, 150 - 180 and 170 - 200mm, 60cm high.)

Any failures in planting within the first 18 months after planting to be replaced with plants of similar species / size (in the next following planting season).

Refer to Landscape Maintenance schedule for details of proposed maintenance regime for the first five years after planting.

GREEN TREE PAS 100 soil improver as supplied by Green Tree 01425 332100.

REVISED HAUL ROAD AND ADVANCED WOODLAND PLANTING PLAN 1:500

ALL DIMENSIONS TO BE CHECKED ON SITE WORK TO FIGURED DIMENSIONS ONLY REPORT DISCREPANCIES TO THE LANDSCAPE ARCHITECT AT ONCE BEFORE PROCEEDING

REVISIONS

A: 28.01.15 Phase 1 site landscape proposals amended to CNPA requirements of 24.10.14 (See drawing HLD K192.15 SL-01-A1) Shinty Pitch planting revised, temporary haul road reinforcement works confirmed, A86 replacement tree planting revised - (See drawing HLD K192.15 SL-05A1-KW)

B: 04.02.15 Landscape proposals amended to CNPA comments KIW

C: 24.11.15 Shinty pitch planting and haul road planting revised to suit new haul road location and scope following advice from CNPA Drawing upscaled to 1:500 scale (at A0) KIW

D: 07.01.16 Haul road planting revised in line with CNPA feedback and sketch drawings. Advanced woodland planting areas, hedging and standard trees and temporary Willow and Broom planting added to haul road mounding. Revised stock proof fencing added to drawing to protect proposed planted areas KIW

E: 08.01.16 Revised stock proof fencing proposals added to landscape proposals as requested (No Advanced woodland planting to be undertaken on temporary mounded areas and set back to protect during mounding removals.) Tree planting to be protected in accordance with BS8857: 2012 Field access gates shown KIW

F: 10.01.16 Tree protection reference amended to BS 5857:2012. Planting details, mixes, specification and planting schedule added. Householder Advice Note updated to comply with GH Johnston's Planning Statement and Soil Landscape Implementation Plan 2110 PLOISA-KW

G: 05.02.16 Mixed species hedging mix revised to shinty pitch as per CNPA request KIW

HIGHLAND LANDSCAPE DESIGN

MORVEN,
CAROLINE STREET,
FORRES,
MORAYSHIRE,
SCOTLAND,
IV 36 1AN.
TEL: 01509 676800
FAX: 01509 691222
jim@highlandlandscape.co.uk

Client
DAVALL DEVELOPMENTS

**KEITH L WOOD BA (HONS) CMLI
LANDSCAPE ARCHITECT**
1, Old Branziel Cottage, Balmore, By Torrance,
Glasgow, G64 4AH.
Tel : 01560 620358 Mob: 07584 054586
email: keith.l.wood@btopenworld.com

Project Title
**LAND NORTH OF KINGUSSIE PHASE 1
-TEMPORARY ACCESS HAUL ROAD.**
Drawing Title
SOFT LANDSCAPE PROPOSALS

Scale	1:500/PAO	Date	07.10.14
Drawn	k.wood	Approved	J. Leage
Drawing No.	HLD K192.15 SL02	Rev.	G