

AGENDA ITEM 6

APPENDIX I

2015/0373/DET

ILLUSTRATIONS

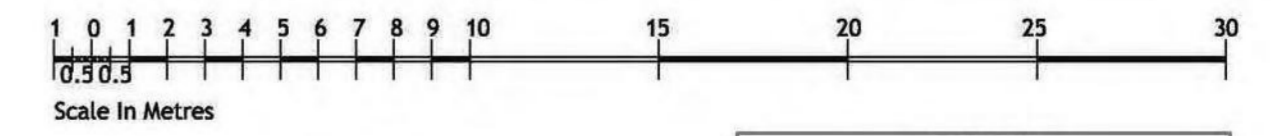


- Planning Application Site Boundary
- Existing Trees
- Existing Trees to be removed
- Proposed Trees
- Proposed Landscaping
- ± Existing Levels
- ± Proposed Levels
- Hard Landscaping
- HL01 Demarcation Strip
- HL02 Tarmac Road Surface
- HL03 Carpark Bay Surface
- HL04 Entrance Path and Courtyard surface/paths
- HL05 Feature Seating Area
- HL06 General Footpaths
- External Lighting
- 3m high Tamlite TC Lighting column with Tamglobe DP sphere (option with shield)
- 1m high TSB Louvered Garden Bollard
- Tamlite Twin 'Garden-Spots' Uplighters
- External Hurricane Circular Soffit light
- External Hurricane Circular Wall hung light
- Schedule
- 35 Apartments in total (4no. 1 Bed Apartments) (31no. 2 Bed Apartments)
- 46 Car parking spaces (131% incl. 3 Disabled spaces)



GRAMPIAN COURT

GRAMPIAN ROAD



PROPOSED SITE PLAN SHOWING GROUND FLOOR PLAN

McCarthy & Stone
The UK's leading retirement housebuilder

youngandgault
Chartered Architects
Masterplanners
Project Managers
Development Consultants

Project Title
Proposed Development of Retirement Apartments, Grampian Road, Aviemore for McCarthy & Stone Retirement Lifestyles Ltd

Drawing Title
Proposed Siteplan and Ground floor plan

Stage
PLANNING

Drg No
SC-2097-03-AC-106

Date
9/04/2015

Scale
1:200

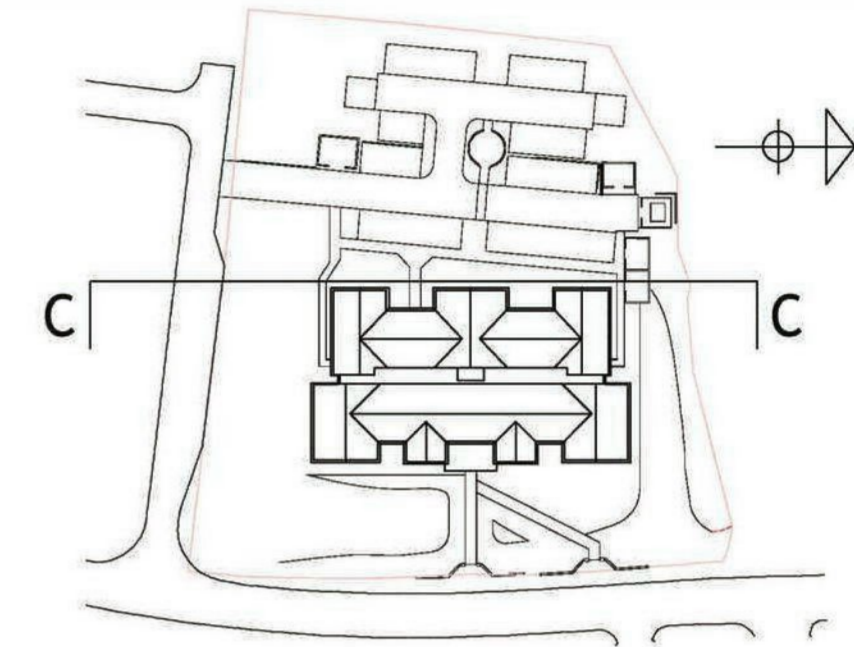
Drawn By
CMCP

Checked By
GS

15/04063/FUL



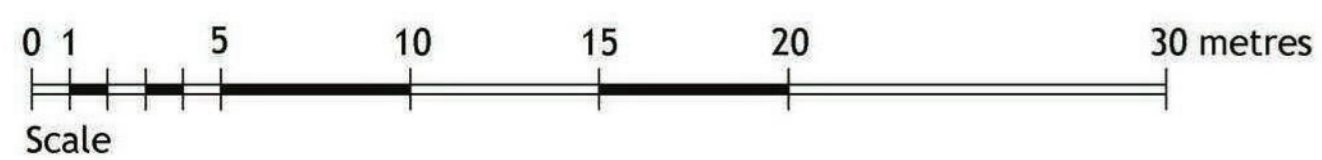
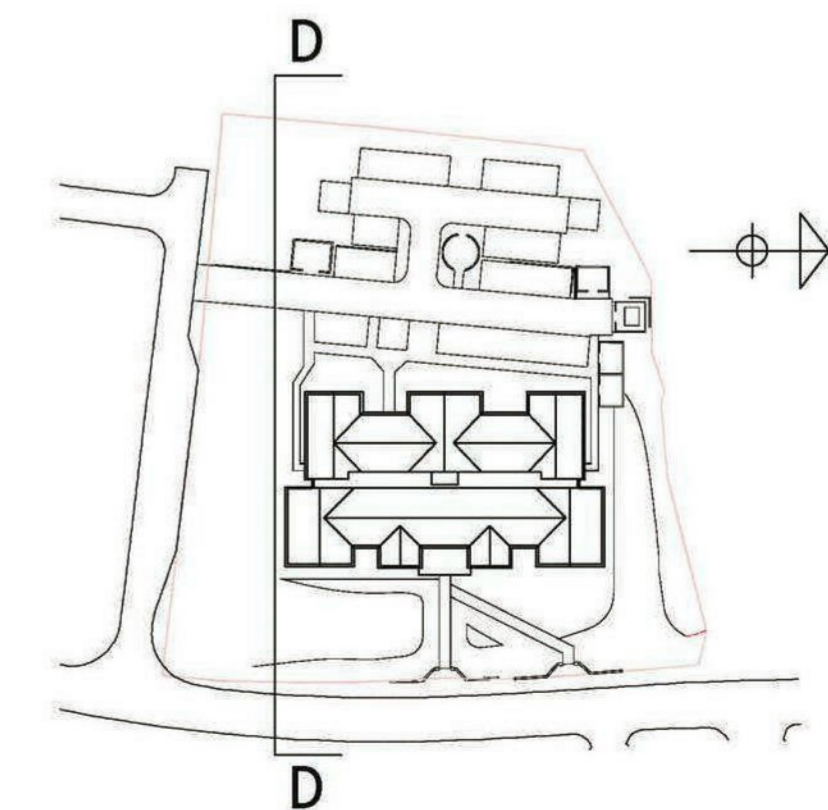
ELEVATION C-C PROPOSED WEST ELEVATION



ELEVATION D-D PROPOSED SOUTH ELEVATION FACING GRAMPAN COURT

Materials Schedule

- Smooth Cast Stone (colour buff)
- Render (colour off-white)
- Glass-infilled balconies (with stainless steel handrails)
- Roof - Interlocking flat concrete tile
- Windows - uPVC (colour grey)
- Osmose treated timber cladding on timber battens on cavity wall
- Facing brick (colour red/ brown)



The Highland Council
 Comhairle na Gàidhealtachd

Plans, drawings and other material submitted to the local authority are prepared by the copyright, design and patents act 1988 (section 47).
 This may only be material which is downloaded and/or printed for consultation purposes, no other use without application with previous written consent to check whether the requirements have been completed in accordance with the copyright act.
 Further copies must not be made without the prior permission of the copyright owner.

15/04063/FUL

McCarthy & Stone
 The UK's leading retirement housebuilder

youngandgault
 Chartered Architects
 Masterplanners
 Project Managers
 Development Consultants

Project Title
Proposed Development of Retirement Apartments Grampian Road, Aviemore for McCarthy & Stone Retirement Lifestyles Ltd

Drawing Title	A1
Proposed Elevations 2 of 3	
Date	9 04 2015
Stage	Scale
PLANNING	1:200
Drawn By	Checked By
Dwg No	Rev
SC-2097-03-AC-104	CMCP
	Checked By
	OS

Suite 3, 3rd Floor, Merlin House,
 Woodland Road, Glasgow G52 4XZ
 T. 0141 332 2225 F. 0141 332 2977
 E. admin@youngandgault.co.uk
 www.youngandgault.co.uk



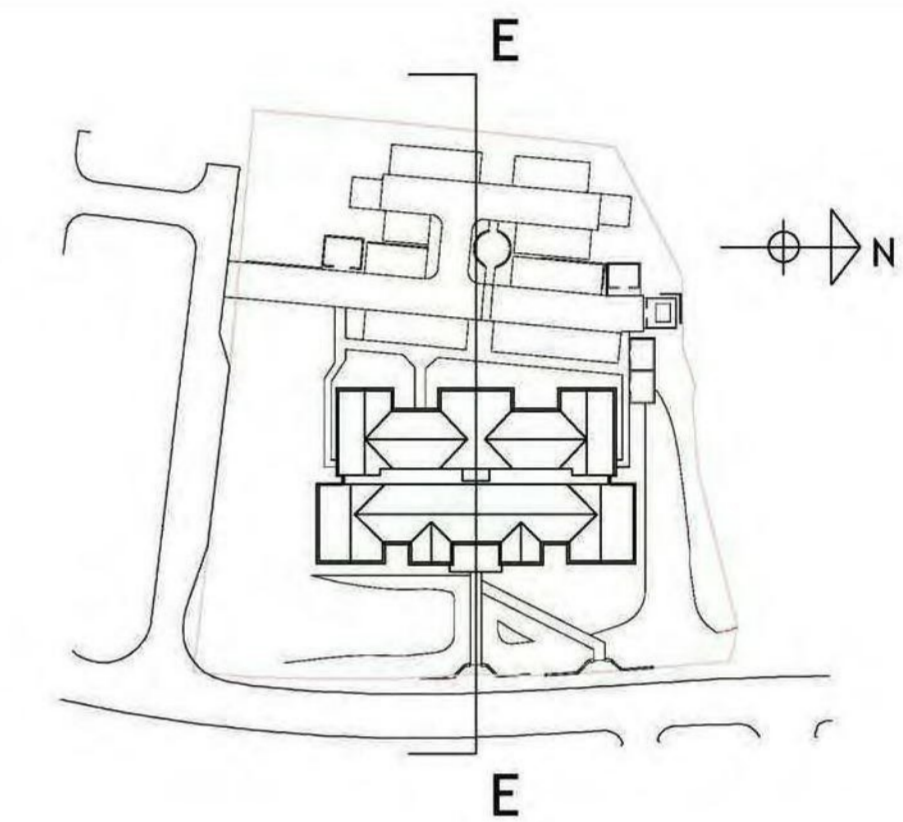
CNPA Ref: 2015/0373/DET

CAIRNGORMS
NATIONAL PARK AUTHORITY

ÙGH DARRAS PÀIRC NÀISEANTA A'
MHON AIDH RU AIDH



SECTION E-E PROPOSED NORTH FACING SECTIONAL ELEVATION



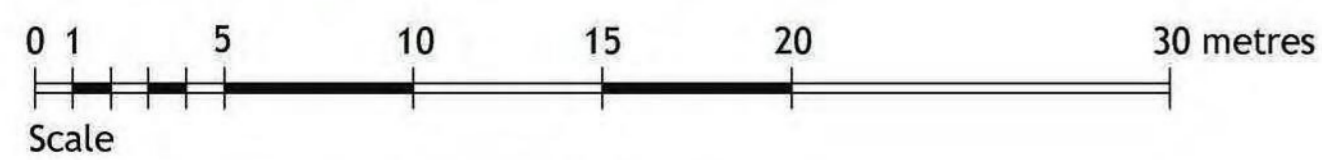
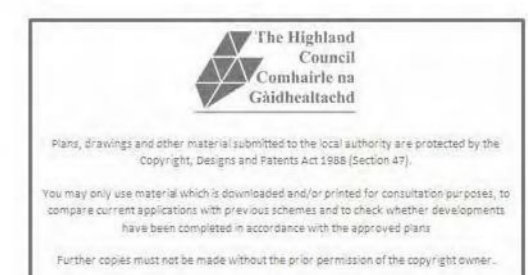
Materials Schedule

-  Smooth Cast Stone (colour buff)
-  Render (colour off-white)
-  Glass-infilled balconies (with stainless steel handrails)
-  Roof - Interlocking flat concrete tile
-  Windows - uPVC (colour grey)
-  Osmose treated timber cladding on timber battens on cavity wall
-  Facing brick (colour red/ brown)



Project Title
Proposed Development of Retirement Apartments
Grampian Road, Aviemore
for McCarthy & Stone
Retirement Lifestyles Ltd

Drawing Title		A1
Proposed Elevations 3 of 3	Date 9.04.2015	
Stage	Scale 1:200	Drawn By
PLANNING	Checked By	Checked By
Dwg No SC-2097-03-AC-105	Rev	Checked By GS



15/04063/FUL

Suite 3, 3rd Floor, Merit House,
Woodend Road, Glasgow G20 4JZ
T. 0141 332 2225 F. 0141 332 2977
E. admin@youngandgault.co.uk
www.youngandgault.co.uk

