

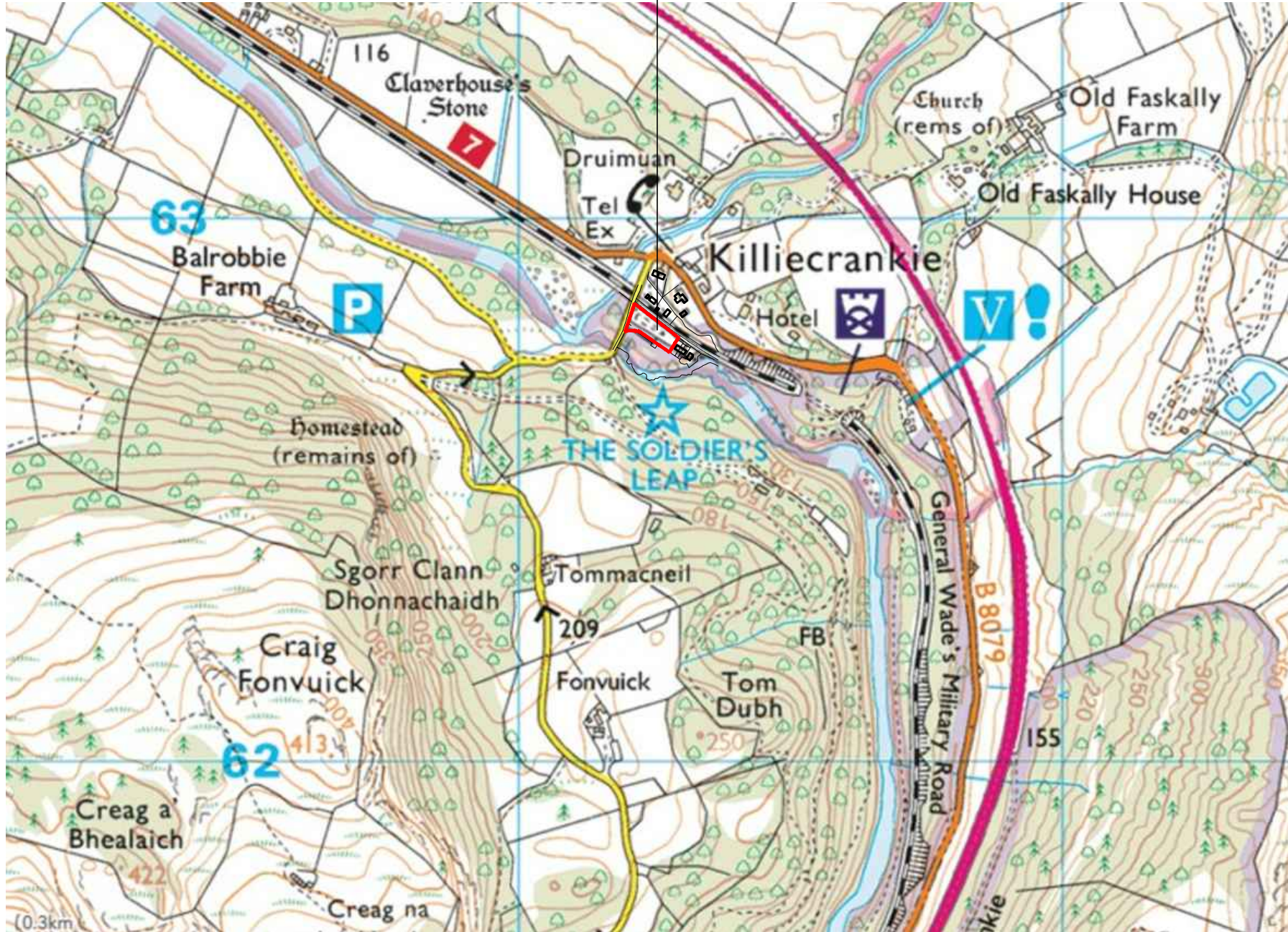
AGENDA ITEM 6

APPENDIX I

2022/0012/DET

PLANS

Application Site



VOIGT
architects

Studio 1
Enkine House
Commerce Street, Arbroath, DD11 1WB
Telephone: 01241 879662
Email: admin@voigtarchitects.ltd
www.voigtarchitects.ltd

PROJECT
Proposed Development
Former Railwayfield
Killiecrankie
PH16 5LQ

AMENDMENTS

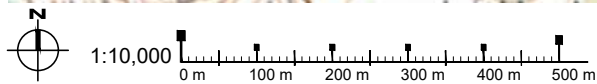
THIS DRAWING IS COPYRIGHT OF
VOIGT ARCHITECTS LIMITED
FOR CONSTRUCTION PURPOSES DO NOT SCALE THIS DRAWING
ALL DIMENSIONS AND LEVELS TO BE CHECKED ON SITE
DISCREPANCIES TO BE REPORTED TO
VOIGT ARCHITECTS LIMITED BEFORE PROCEEDING
IF IN ANY DOUBT ABOUT INFORMATION ON THIS DRAWING,
CONTACT VOIGT ARCHITECTS LIMITED

DRAWING TITLE

Location Plan

SCALE: 1:10,000 @ A4
DATE: May 2021
CAD FILE: DRAWN BY: JR

STATUS: DWG NO
3991/LP/02 Ver 1



PROJECT

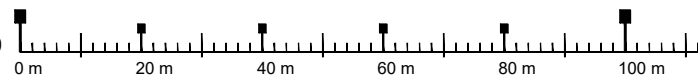
Proposed Development
Former Railwayfield
Killiecrankie
PH16 5LQ

AMENDMENTS

2 Amendment to application site 18.5.21 LP



Scale 1:1250



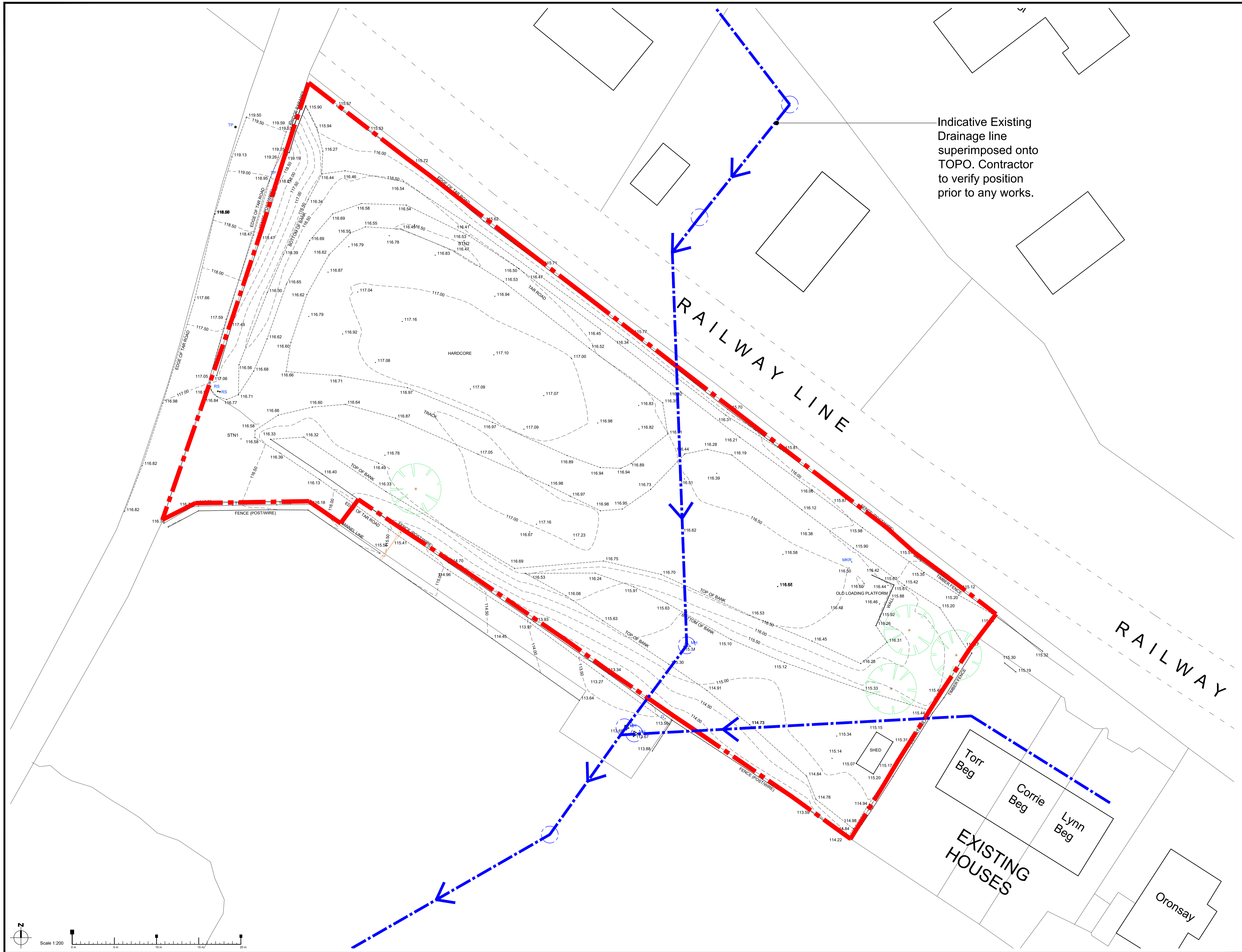
THIS DRAWING IS COPYRIGHT OF
VOIGT ARCHITECTS LIMITED
FOR CONSTRUCTION PURPOSES DO NOT SCALE THIS DRAWING
ALL DIMENSIONS AND LEVELS TO BE CHECKED ON SITE
DISCREPANCIES TO BE REPORTED TO
VOIGT ARCHITECTS LIMITED BEFORE PROCEEDING
IF IN ANY DOUBT ABOUT INFORMATION ON THIS DRAWING,
CONTACT VOIGT ARCHITECTS LIMITED.

DRAWING TITLE

Location Plan

SCALE DATE
1:1250 @ A4 May 2021
CAD FILE DRAWN BY
LP

STATUS
3991/LP/01 Ver 2 DWG NO



Indicative Existing
Drainage line
superimposed onto
TOPO. Contractor
to verify position
prior to any works.

© THIS DRAWING IS COPYRIGHT OF
VOIGT ARCHITECTS LIMITED
FOR CONSTRUCTION PURPOSES DO NOT SCALE THIS
DRAWING
ALL DIMENSIONS AND LEVELS TO BE CHECKED ON SITE
DISCREPANCIES TO BE REPORTED TO
VOIGT ARCHITECTS LIMITED BEFORE PROCEEDING
IF IN ANY DOUBT ABOUT INFORMATION ON THIS
DRAWING, CONTACT VOIGT ARCHITECTS LIMITED

DRAWING TITLE
Proposed Topographical Survey
Existing Site Plan (2021)
by Douglas Land Surveys

SCALE: 1:200 @ A1
DATE: Oct 2021
DRAWN BY: Douglas Land Surveys

SURVEY
3991-SD-01 Ver 1
STATUS: DWG/NO

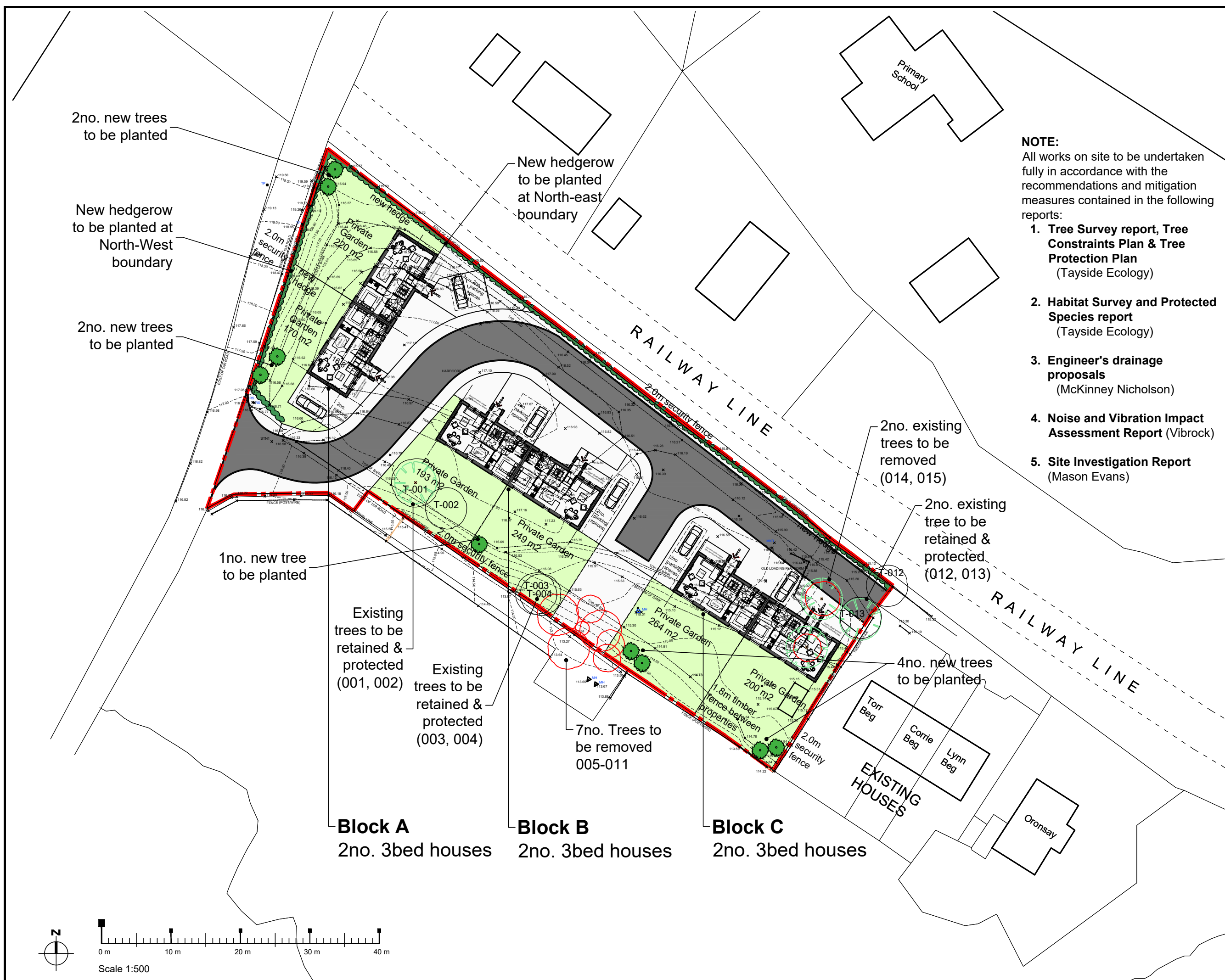
Cat C Trees to be removed:

- 005 Silver Birch
- 006 Hazel
- 007 Ash
- 008 Hawthorn
- 009 Hazel
- 010 Hawthorn
- 011 Silver Birch
- 014 Norway Spruce
- 015 Scot's Pine

NOTE:

All works on site to be undertaken fully in accordance with the recommendations and mitigation measures contained in the following reports:

1. **Tree Survey report, Tree Constraints Plan & Tree Protection Plan**
(Tayside Ecology)
2. **Habitat Survey and Protected Species report**
(Tayside Ecology)
3. **Engineer's drainage proposals**
(McKinney Nicholson)
4. **Noise and Vibration Impact Assessment Report** (Vibroek)
5. **Site Investigation Report**
(Mason Evans)



© THIS DRAWING IS COPYRIGHT OF VOIGT ARCHITECTS LIMITED FOR CONSTRUCTION PURPOSES DO NOT SCALE THIS DRAWING
ALL DIMENSIONS AND LEVELS TO BE CHECKED ON SITE
DISCREPANCIES TO BE REPORTED TO VOIGT ARCHITECTS LIMITED BEFORE PROCEEDING
IF IN ANY DOUBT ABOUT INFORMATION ON THIS DRAWING, CONTACT VOIGT ARCHITECTS LIMITED

DRAWING TITLE
Proposed Site Plan

SCALE 1/500 @ A3 DATE May 2021
CAD FILE DRAWN BY JR

STATUS DWG NO
3991/PD/01 Ver 3

Proposed Development
Former Railwayfield,
Killiecrankie
PH16 5LQ

AMENDMENTS

2	Section	18.5.21	LF
3	Elevations changed	27.10.21	JR

Material Specification:

Walls:

- White Wet-Dash Render
- Buff colour borders to windows as shown
- Natural Stone Porch (Colour: Grey - Denfind stone or equal)
- Timber Cladding to be Larch (Russwood or equal)

Roof:

- Natural Slate

Windows:

- Alu-Clad / UPVC - Grey
- Buff colour borders to windows as shown

Boundary Walls:

- 2.0m high timber fence
- 1.8m timber fence between properties

© THIS DRAWING IS COPYRIGHT OF
VOIGT ARCHITECTS LIMITED

FOR CONSTRUCTION PURPOSES DO NOT SCALE THIS
DRAWING

ALL DIMENSIONS AND LEVELS TO BE CHECKED ON SITE

DISCREPANCIES TO BE REPORTED TO
VOIGT ARCHITECTS LIMITED BEFORE PROCEEDING

IF IN ANY DOUBT ABOUT INFORMATION ON THIS
DRAWING, CONTACT VOIGT ARCHITECTS LIMITED

DRAWING TITLE

Proposed Elevations

SCALE DATE

1:100 @ A2 May 2021

CAD FILE DRAWN BY

JR

STATUS
3991/PD/11 Ver 3 DWG NO



Proposed Front Elevation



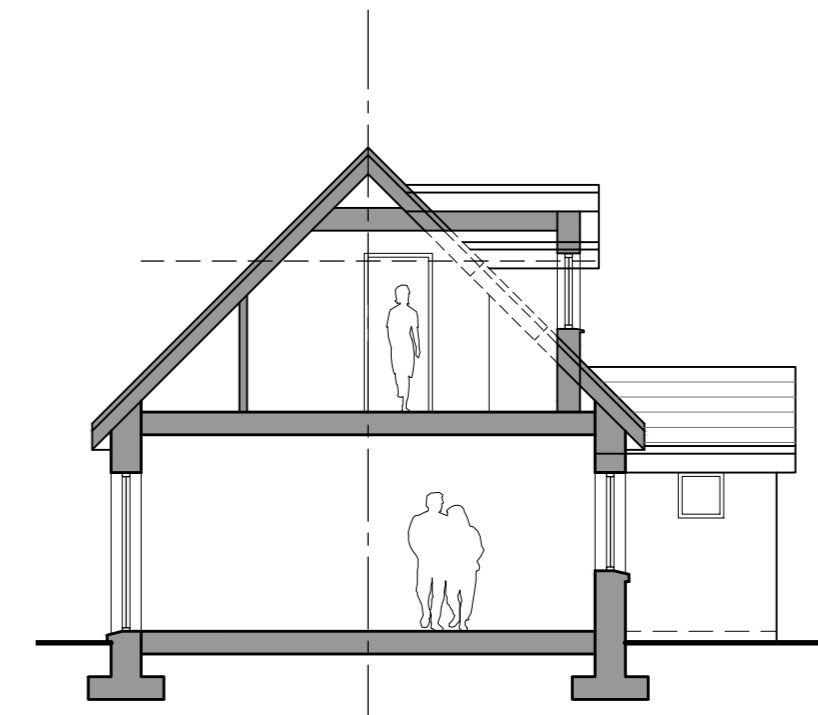
Proposed Side Elevation



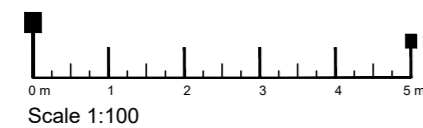
Proposed Rear Elevation



Proposed Side Elevation

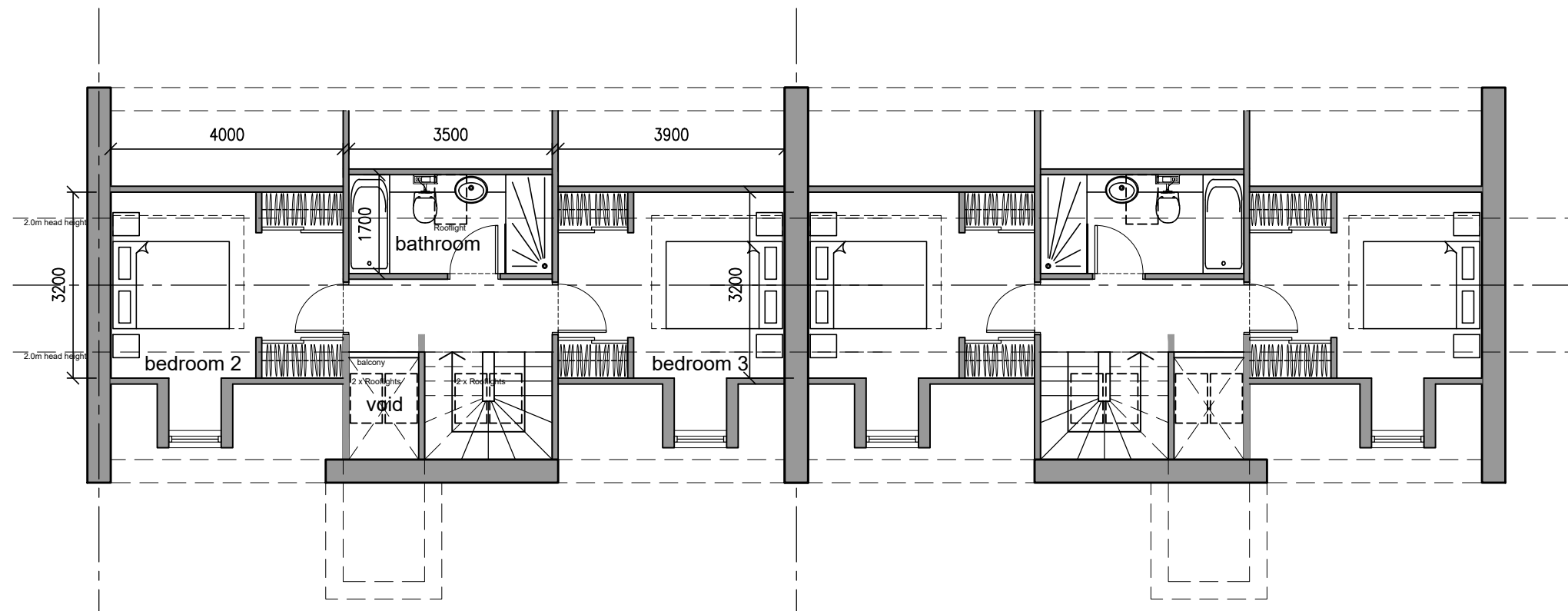


Proposed Cross Section

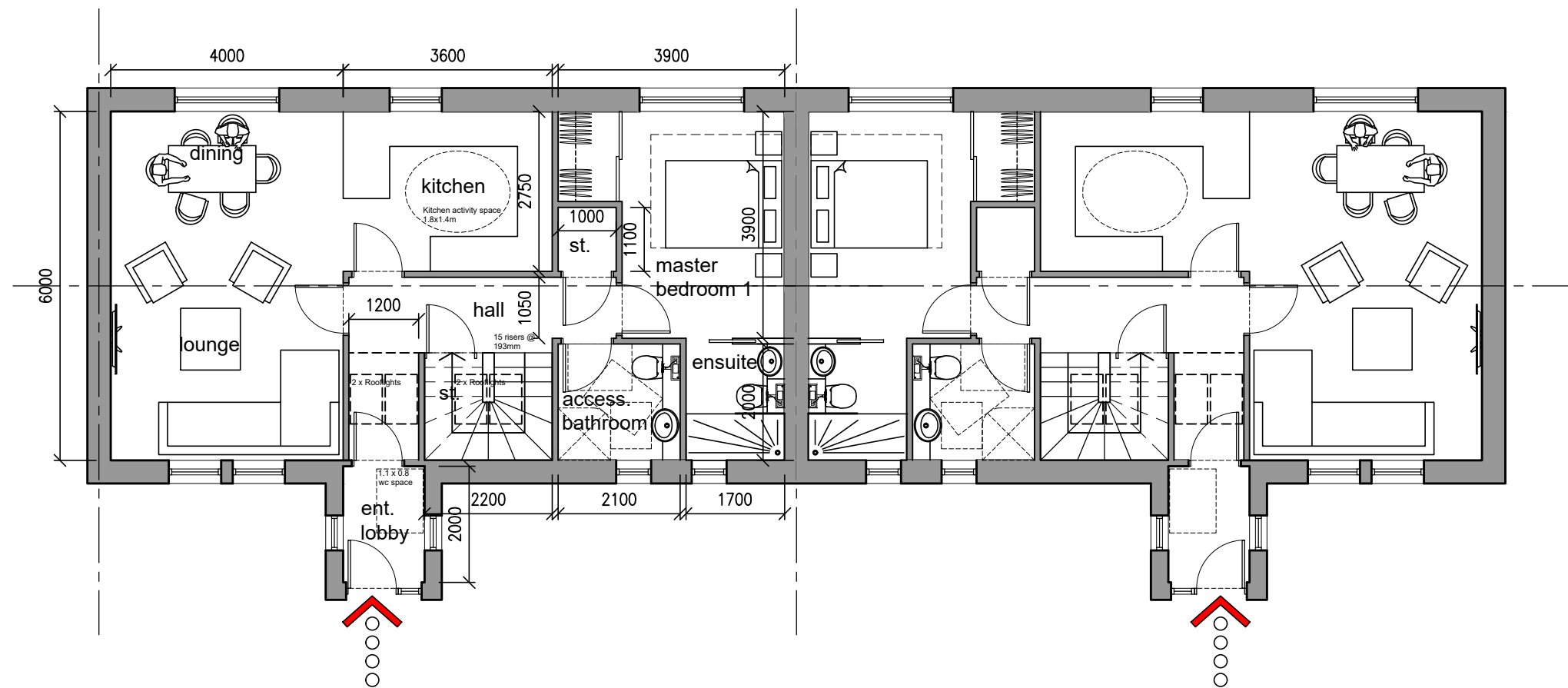


Proposed Design Summary:

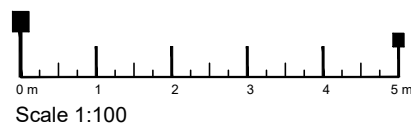
Ground: 72.5 m2
Upper: 38.1 m2
Total: 110.6 m2



Proposed First Floor Plan



Proposed Ground Floor Plan



© THIS DRAWING IS COPYRIGHT OF
VOIGT ARCHITECTS LIMITED
FOR CONSTRUCTION PURPOSES DO NOT SCALE THIS
DRAWING
ALL DIMENSIONS AND LEVELS TO BE CHECKED ON SITE
DISCREPANCIES TO BE REPORTED TO
VOIGT ARCHITECTS LIMITED BEFORE PROCEEDING
IF IN ANY DOUBT ABOUT INFORMATION ON THIS DRAWING,
CONTACT VOIGT ARCHITECTS LIMITED

DRAWING TITLE

Sketch Design Plans & Section

SCALE 1/100 @ A3 DATE May 2021
DRAWN BY JR

STATUS DWG NO
3991/PD/10 Ver 2



Proposed 3D Image: Frontage



Proposed 3D Image: Rear

VOIGT architects

Studio 1
Erskine House
Commerce Street, Arbroath, DD11 1WB
Telephone: 01241 879662
Email: admin@voigtarchitects.ltd
www.voigtarchitects.ltd

PROJECT

Proposed Development
Former Railwayfield,
Killiecrankie
PH16 5LQ

AMENDMENTS

3 Elevations changed 27.10.21 JR

© THIS DRAWING IS COPYRIGHT OF
VOIGT ARCHITECTS LIMITED
FOR CONSTRUCTION PURPOSES DO NOT SCALE THIS
DRAWING
ALL DIMENSIONS AND LEVELS TO BE CHECKED ON SITE
DISCREPANCIES TO BE REPORTED TO
VOIGT ARCHITECTS LIMITED BEFORE PROCEEDING
IF IN ANY DOUBT ABOUT INFORMATION ON THIS
DRAWING, CONTACT VOIGT ARCHITECTS LIMITED

DRAWING TITLE

Proposed 3D I

SCALE	DATE
NTS @ A2	May 2021
CAD FILE	DRAWN BY
	JR

3991/PD/12 Ver 3	STATUS
	DWG NO



Proposed 3D Image: First Floor Plan



Proposed 3D Image: Ground Floor Plan

VOIGT
architects

Studio 1
Erskine House
Commerce Street, Arbroath, DD11 1WB
Telephone: 01241 879662
Email: admin@voigtarchitects.ltd
www.voigtarchitects.ltd

PROJECT

Proposed Development
Former Railwayfield,
Killiecrankie
PH16 5LQ

AMENDMENTS

3 Elevations changed 27.10.21 JR

© THIS DRAWING IS COPYRIGHT OF
VOIGT ARCHITECTS LIMITED
FOR CONSTRUCTION PURPOSES DO NOT SCALE THIS
DRAWING
ALL DIMENSIONS AND LEVELS TO BE CHECKED ON SITE
DISCREPANCIES TO BE REPORTED TO
VOIGT ARCHITECTS LIMITED BEFORE PROCEEDING
IF IN ANY DOUBT ABOUT INFORMATION ON THIS
DRAWING, CONTACT VOIGT ARCHITECTS LIMITED

DRAWING TITLE

Proposed 3D II

SCALE	DATE
NTS @ A2	May 2021
CAD FILE	DRAWN BY
	JR

3991/PD/13 Ver 3	STATUS
	DWG NO



Proposed 3D Image: Aerial View of Site

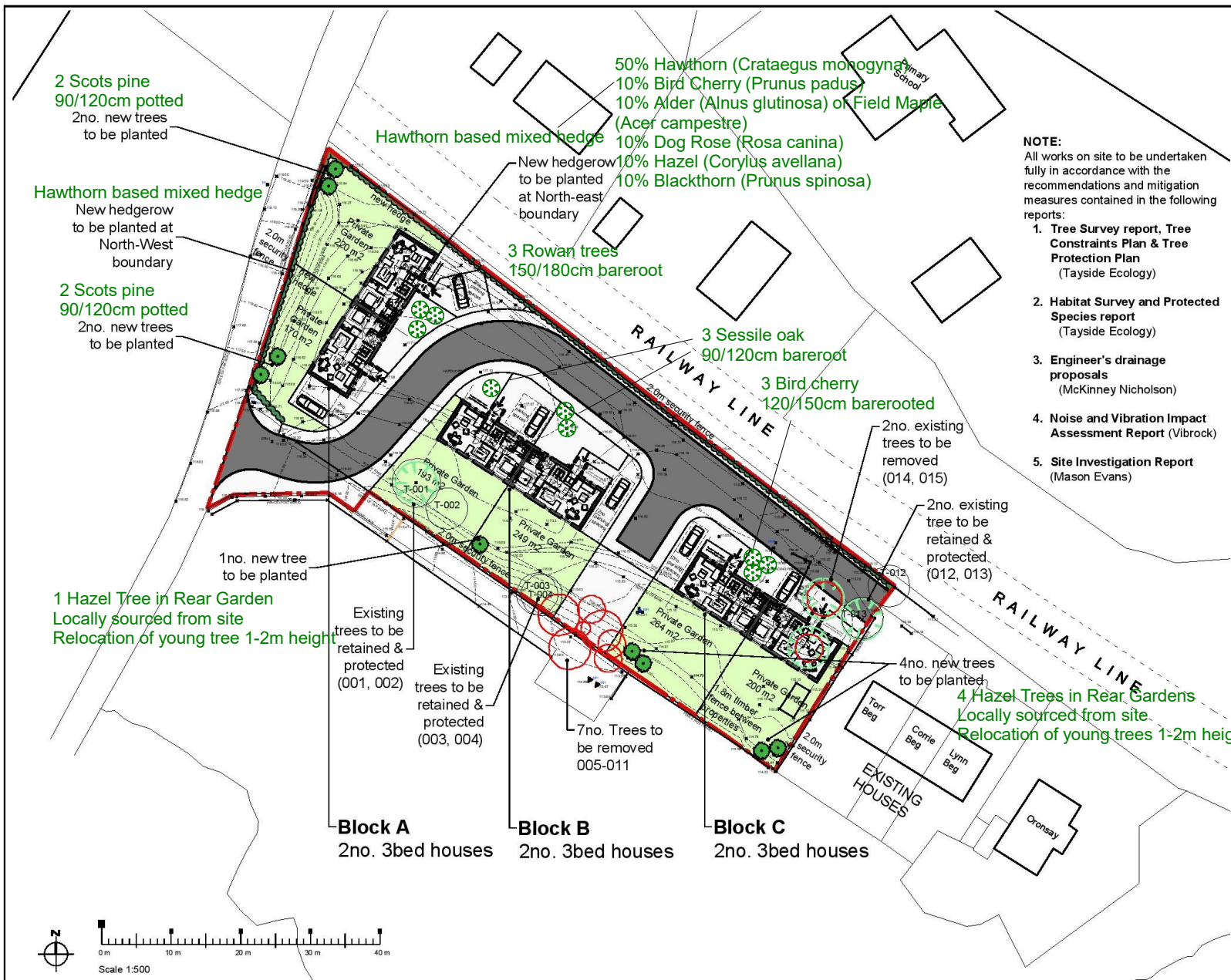
© THIS DRAWING IS COPYRIGHT OF
VOIGT ARCHITECTS LIMITED
FOR CONSTRUCTION PURPOSES DO NOT SCALE THIS
DRAWING
ALL DIMENSIONS AND LEVELS TO BE CHECKED ON SITE
DISCREPANCIES TO BE REPORTED TO
VOIGT ARCHITECTS LIMITED BEFORE PROCEEDING
IF IN ANY DOUBT ABOUT INFORMATION ON THIS DRAWING,
CONTACT VOIGT ARCHITECTS LIMITED

DRAWING TITLE

Sketch Design
3D View Aerial

SCALE	DATE
NTS @ A3	May 2021
CAD FILE	DRAWN BY
	JR

3991/PD/14 Ver 3	STATUS DWG NO
------------------	------------------



- 50% Hawthorn (*Crataegus monogyna*)
- 10% Bird Cherry (*Prunus padus*)
- 10% Alder (*Alnus glutinosa*) or Field Maple (*Acer campestre*)
- 10% Dog Rose (*Rosa canina*)
- 10% Hazel (*Corylus avellana*)
- 10% Blackthorn (*Prunus spinosa*)

- NOTE:**
All works on site to be undertaken fully in accordance with the recommendations and mitigation measures contained in the following reports:
1. Tree Survey report, Tree Constraints Plan & Tree Protection Plan (Tayside Ecology)
 2. Habitat Survey and Protected Species report (Tayside Ecology)
 3. Engineer's drainage proposals (McKinney Nicholson)
 4. Noise and Vibration Impact Assessment Report (Vibroack)
 5. Site Investigation Report (Mason Evans)

VOIGT
architects

Studio 1
Eskdale House
Commerce Street, Arbroath, DD11 1WB
Telephone: 01241 879662
Email: admin@voigtarchitects.ltd
www.voigtarchitects.ltd

PROJECT
Proposed Development
Former Railwayfield,
Killiecrankie
PH16 5LQ

AMENDMENTS
3 Amendment to application site 18.5.21 LP
Revised Site survey info
Tree info added 27.10.21 JR

- Cat C Trees to be removed:**
- 005 Silver Birch
 - 006 Hazel
 - 007 Ash
 - 008 Hawthorn
 - 009 Hazel
 - 010 Hawthorn
 - 011 Silver Birch
 - 014 Norway Spruce
 - 015 Scot's Pine

THIS DRAWING IS COPYRIGHT OF VOIGT ARCHITECTS LIMITED.
FOR CONSTRUCTION PURPOSES DO NOT SCALE THIS DRAWING.
ALL DIMENSIONS AND LEVELS TO BE CHECKED ON SITE.
DISCREPANCIES TO BE REPORTED TO VOIGT ARCHITECTS LIMITED BEFORE PROCEEDING.
IF ANY QUOTE/REQUEST INFORMATION ON THIS DRAWING, CONTACT VOIGT ARCHITECTS LIMITED.

DRAWING TITLE
Proposed Site Plan

SCALE 1:500 @ A3
DATE May 2021
DRAWN BY JR

3991/PD/01 Ver 3

Key:

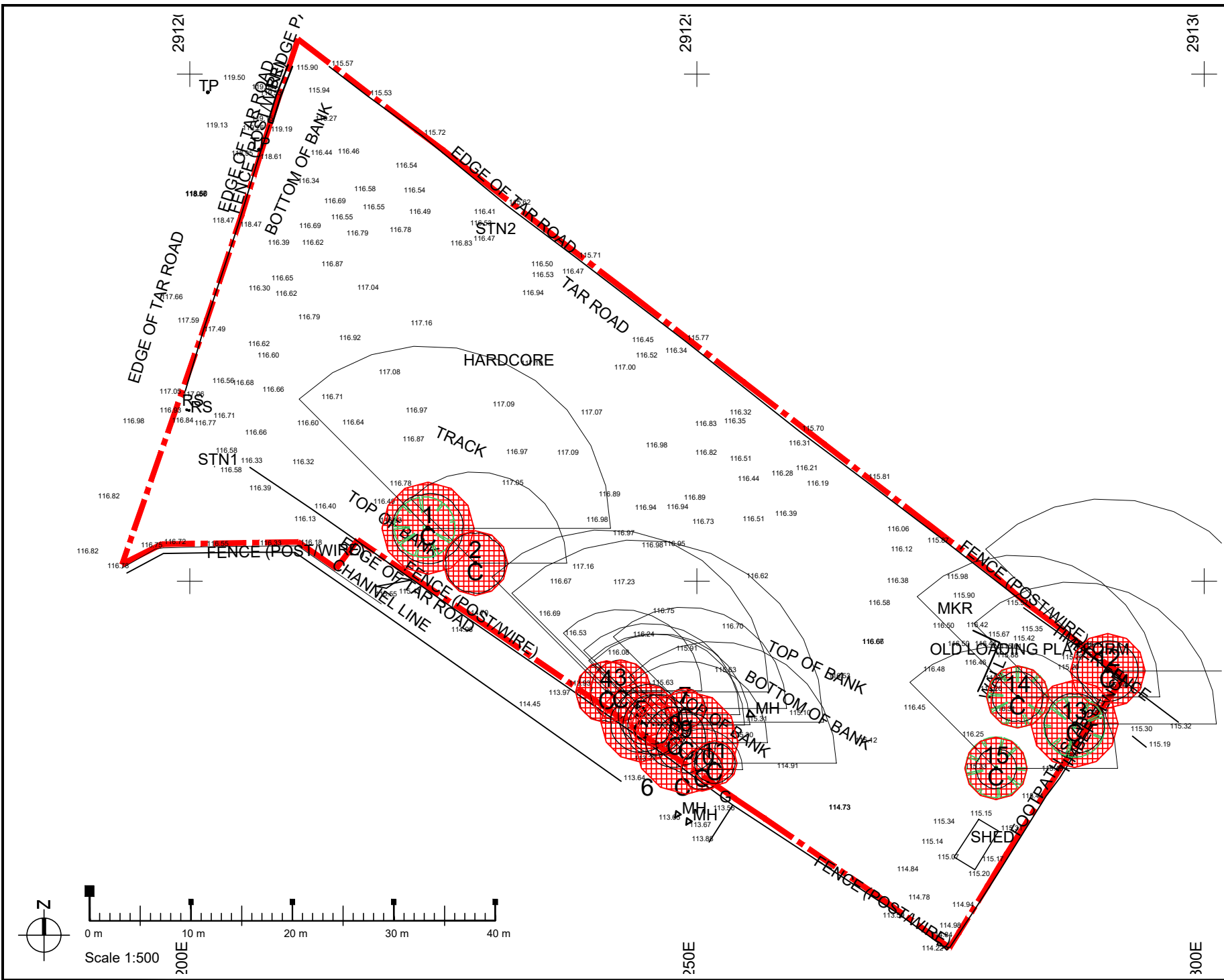


THIS DRAWING IS COPYRIGHT OF
 VOIGT ARCHITECTS LIMITED
 FOR CONSTRUCTION PURPOSES DO NOT SCALE THIS DRAWING
 ALL DIMENSIONS AND LEVELS TO BE CHECKED ON SITE
 DISCREPANCIES TO BE REPORTED TO
 VOIGT ARCHITECTS LIMITED BEFORE PROCEEDING
 IF IN ANY DOUBT ABOUT INFORMATION ON THIS DRAWING,
 CONTACT VOIGT ARCHITECTS LIMITED

Tree Survey Plan by Tayecology

SCALE: 1:500 @ A4 DATE: May 2021
 CAD FILE: DRAWN BY: EOC

STATUS: DWG NO: Tree Survey Plan





THIS DRAWING IS COPYRIGHT OF
VOIGT ARCHITECTS LIMITED
FOR CONSTRUCTION PURPOSES DO NOT SCALE THIS
DRAWING
ALL DIMENSIONS AND LEVELS TO BE CHECKED ON SITE
DISCREPANCIES TO BE REPORTED TO
VOIGT ARCHITECTS LIMITED BEFORE PROCEEDING
IF IN ANY DOUBT ABOUT INFORMATION ON THIS DRAWING,
CONTACT VOIGT ARCHITECTS LIMITED

DRAWING TITLE
Proposed Site Drainage Plan

SCALE 1/500 @ A3 DATE May 2021
DRAWN BY JR

STATUS
3991/PD/02 Ver 3 DWG NO