

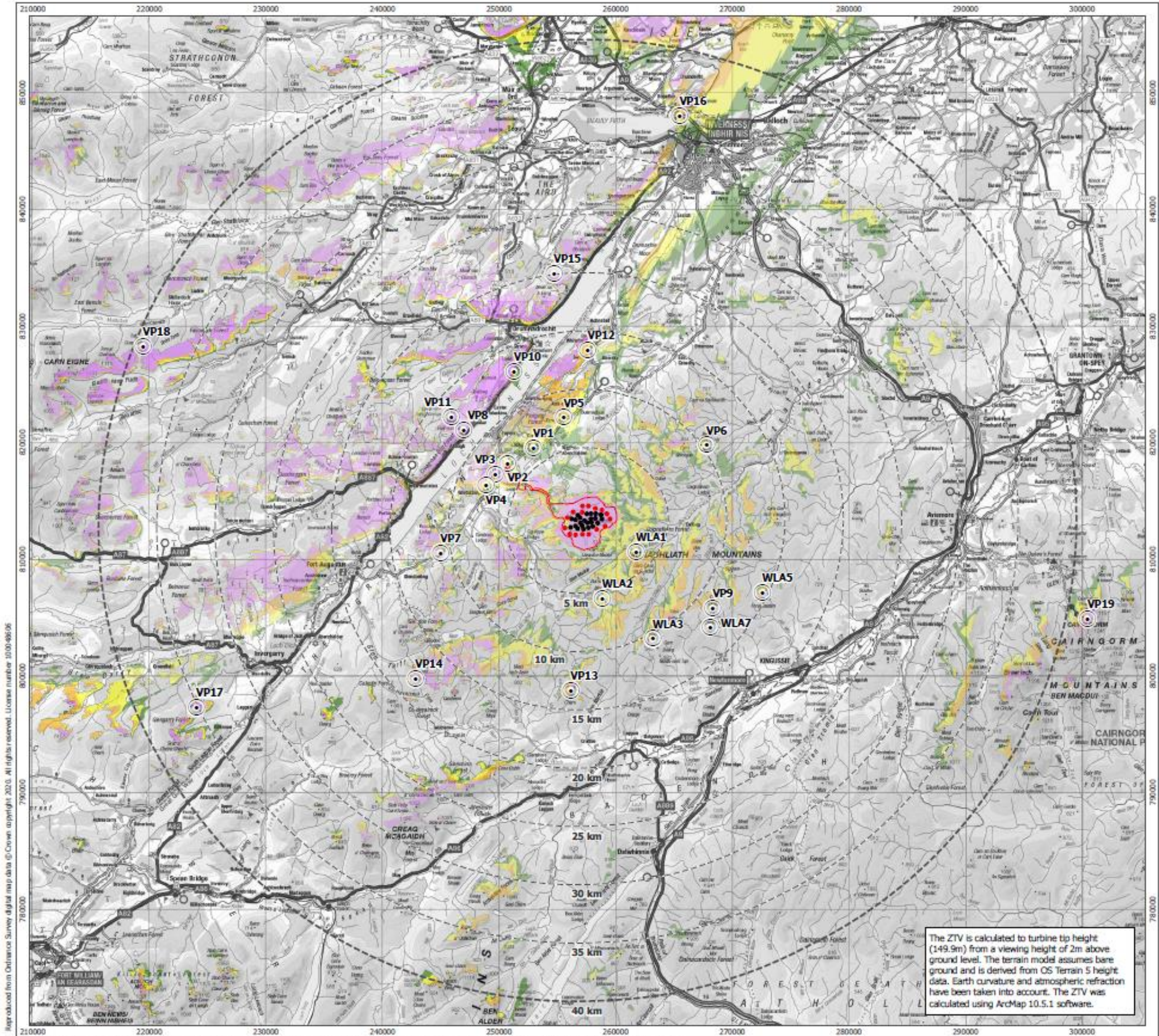
AGENDA ITEM 7

APPENDIX I

CORRIEGARTH 2 WIND FARM

PROPOSED WIND FARM ZTV

Appendix I - applicant's ER Figure 6.3a, ZTV for only Corriegarth 2, with viewpoint locations







Legend

- Development boundary
- Existing Corriegarth turbine location
- Corriegarth 2 turbine location
- 5 km intervals from outermost turbines
- 40 km from outermost turbines

Theoretical turbine visibility

- 1-4 Turbines are visible
- 5-8 Turbines are visible
- 9-12 Turbines are visible
- 13-16 Turbines are visible
- Viewpoint location

Viewpoint List:

- VP1: Gorthleck
- VP2: Boleskine Parish Church
- VP3: B862 West of Corriegarth Lodge
- VP4: South Loch Ness Trail, north of Whitebridge
- VP5: Errogie
- VP6: Beinn Bhreac Mhor
- VP7: General Wade's Military Road
- VP8: Great Glen Way, East of Creag Dhearg
- VP9: Cam Sgulain (AESLQ05 / WLA04)
- VP10: A82 Achnahamnet
- VP11: Meall Fuar-mhonaidh
- VP12: B862 North of Torness
- VP13: Geal Cherr (AESLQ04 / WLA06)
- VP14: Corneyrack Hill
- VP15: Cam na Leitire
- VP16: North Kessock - A9 northbound picnic area
- VP17: Ben Tee
- VP18: Toll Creagach
- VP19: Ptarmigan Restaurant, Cairngorm

WLA List:

- WLA01: River Eskin Estate track
- WLA02: Ailt Cam Ban
- WLA03: Cam Ban (AESLQ01)
- WLA05: Càrn an Fhroicadain (AESLQ02)
- WLA07: A'Chailleach (AESLQ03)

1:315,000 Scale @ A3



Produced By: JN Ref: 10792-6.3a
 Checked By: DW Date: 11/09/2020

Blade Tip Height (149.9 m) Zone of Theoretical Visibility (ZTV) and Viewpoint Locations Figure 6.3a

Corriegarth 2 Wind Farm EIA Report

The ZTV is calculated to turbine tip height (149.9m) from a viewing height of 2m above ground level. The terrain model assumes bare ground and is derived from OS Terrain 5 height data. Earth curvature and atmospheric refraction have been taken into account. The ZTV was calculated using ArcMap 10.5.1 software.

Reproduced from Ordnance Survey digital map data © Crown copyright 2020. All rights reserved. License number 1030-98296
 T:\10710792_Corriegarth\WF\Ext\Via\GIS\PRO\Corriegarth2_LVIA_EIA_202008\LUC_Corriegarth2_LVIA_EIA_A3\LUC_Corriegarth2_LVIA_EIA_A3.aprx\FIG6-3a_10792_r1_LVIA_TipZTV_VPs_A3