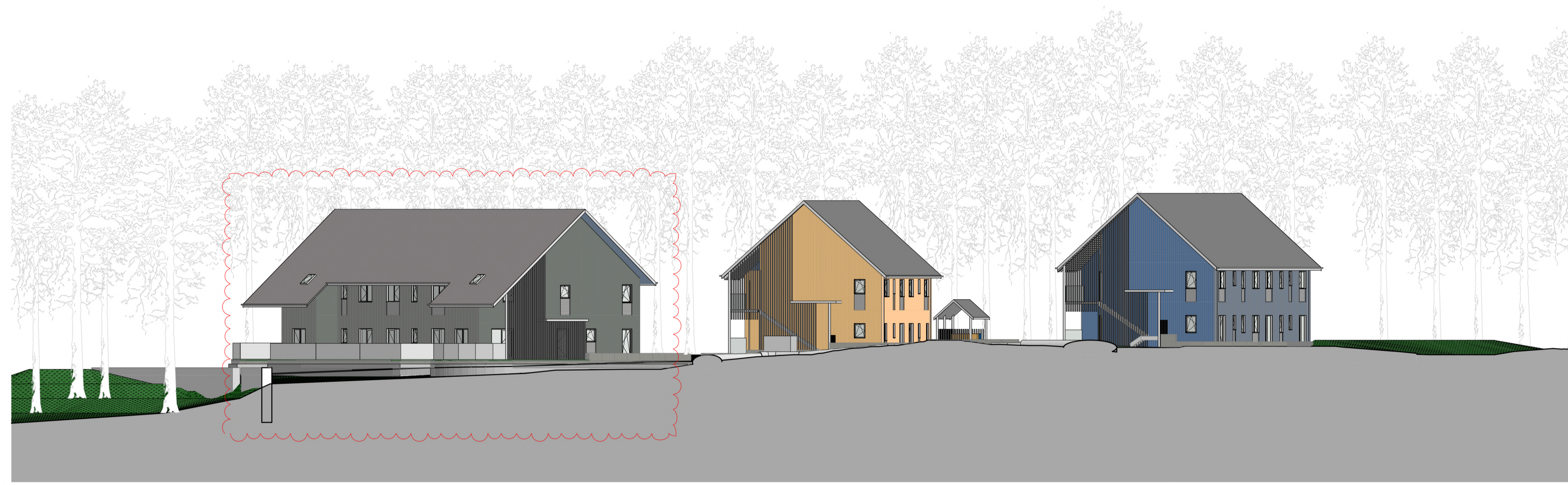


AGENDA ITEM 6

APPENDIX IC

2021/0166/DET

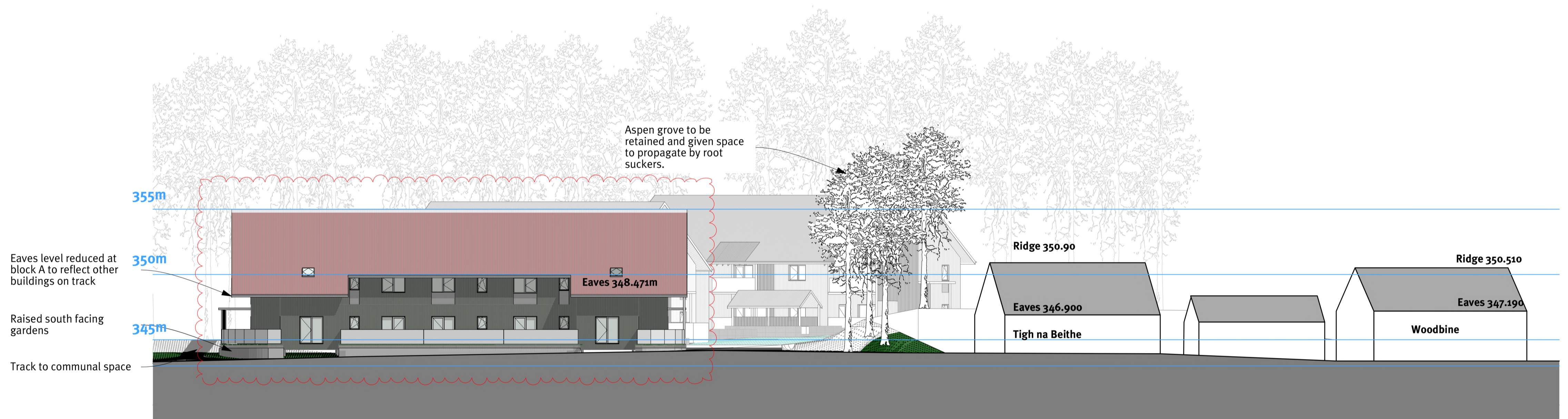
PLANS



E13

Gable Elevation

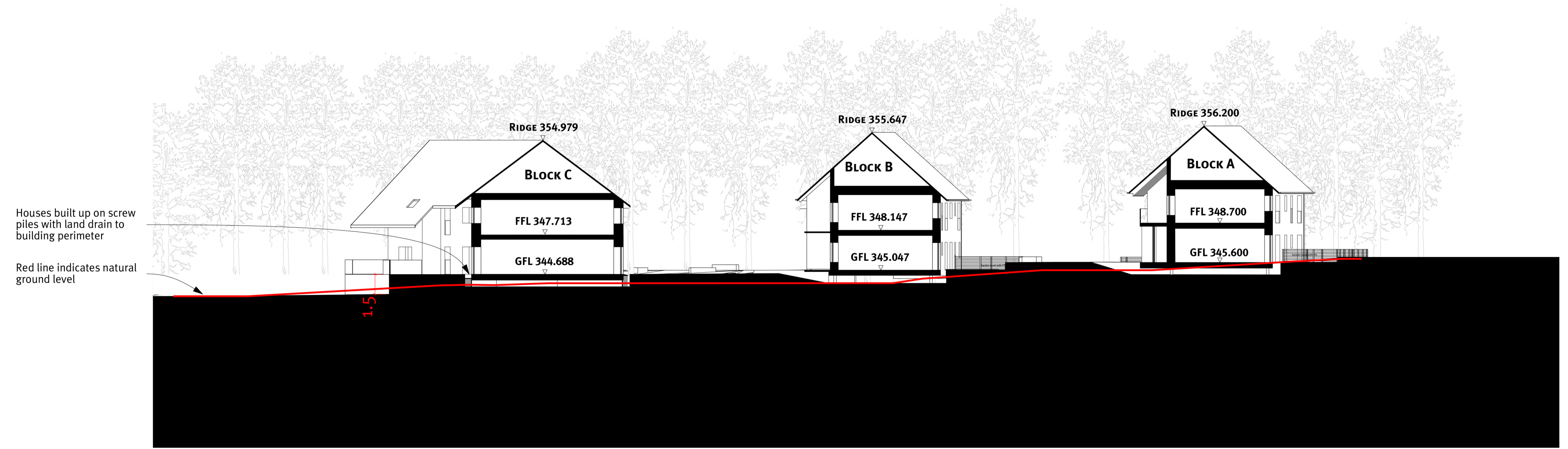
1:200



E14

Block A Street Elevation

1:200



S-10

Context Section

1:200

Do not scale from this drawing. All existing dimensions to be checked on site prior to commencement of works or manufacturing of components. Any discrepancies to be brought to the attention of the architect - if in doubt, ask.

This drawing is the copyright of John Gilbert Architects Ltd. No copying or distribution of this drawing or any part thereof is permitted without prior written permission.

John Gilbert ARCHITECTS

201 White Studios, 62 Templeton Street, Glasgow, G40 1DA
Tel: 0141 551 8383
Web: www.johngilbert.co.uk

Client: **BRAEMAR COMMUNITY LTD.**

Project: **KINDROCHT COURT**

Title: **CONTEXT ELEVATIONS/ SECTIONS**

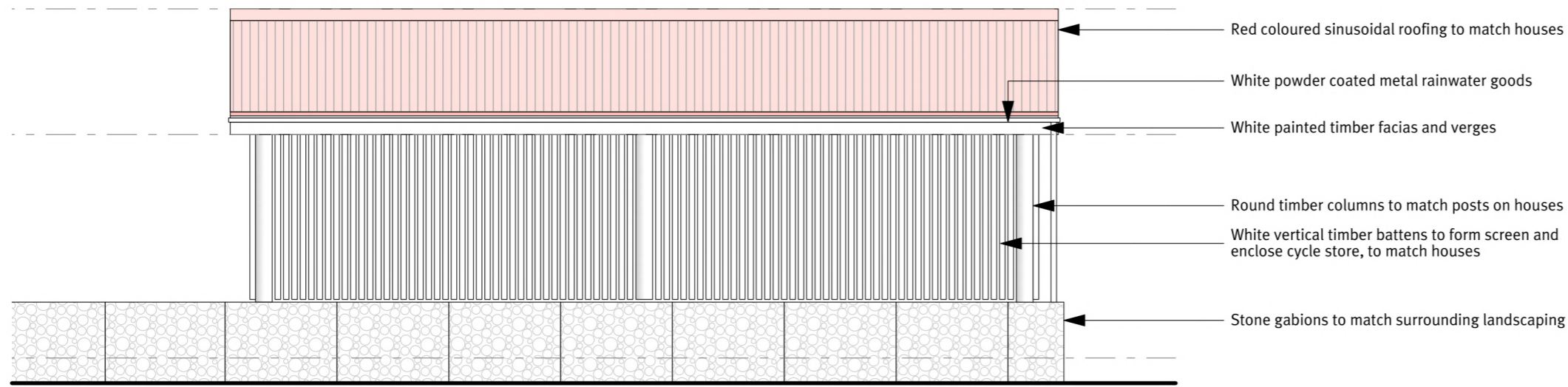
Project Status: **STAGE 3 (PLANNING)**

Job No: **04335** Scale: **A1**
Date: **1:200**

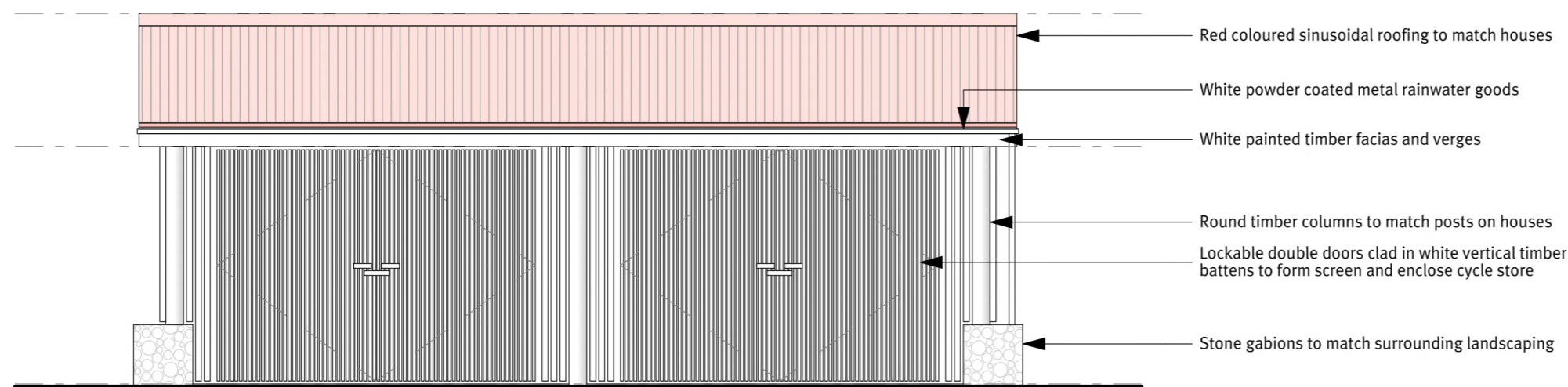
Drawn by: **E L** Date of issue:

Rev.	Amendment	Date
A	Issue upon return to Block C	14/07/21
B	Issue upon return to Block C	14/07/21

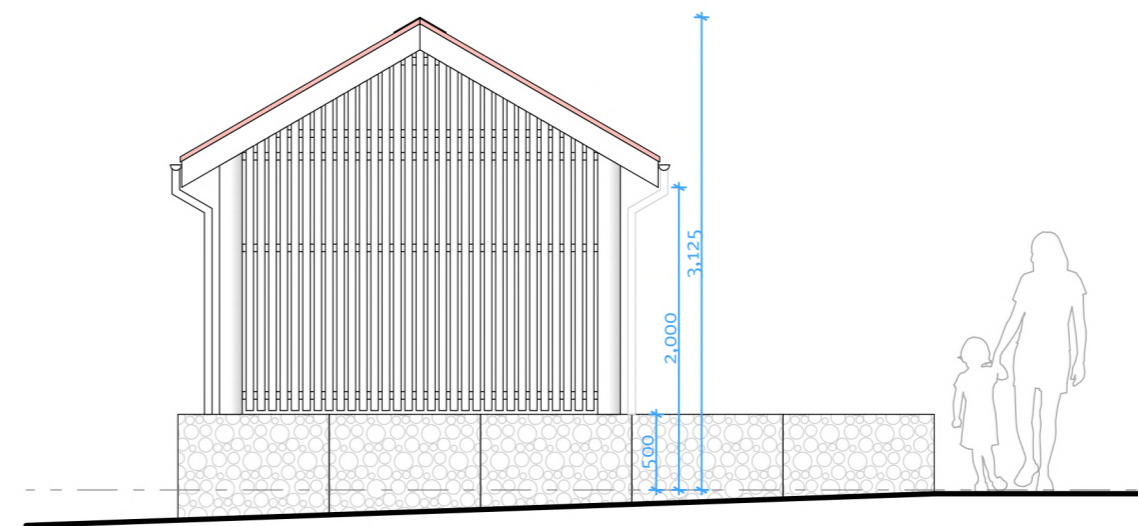
Drg No. **[PE]04_REV B** Rev



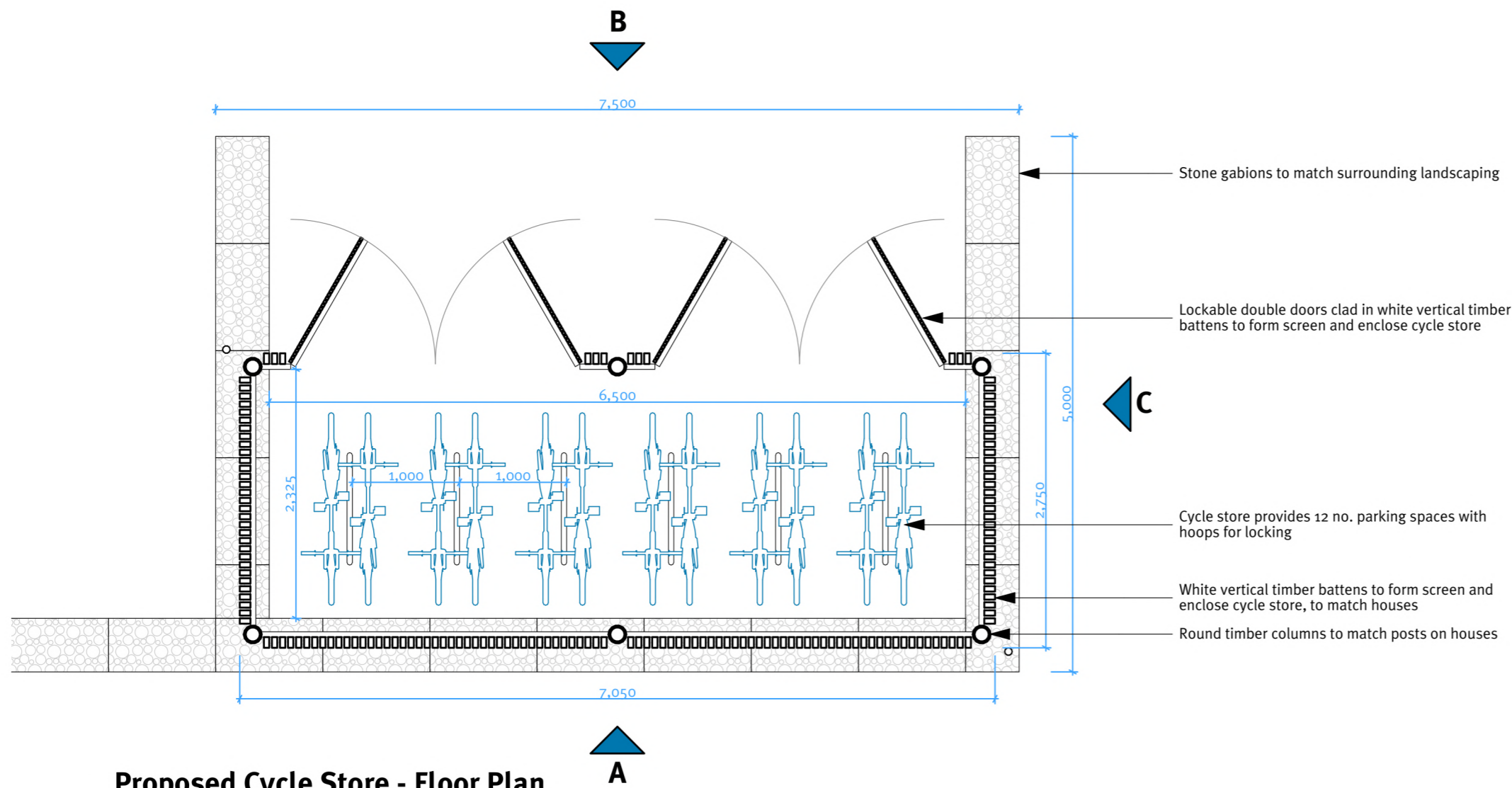
Proposed Cycle Store - Rear Elevation A



Proposed Cycle Store - Front Elevation B



Proposed Cycle Store - Side Elevation C



Proposed Cycle Store - Floor Plan



Do not scale from this drawing.
All existing dimensions to be checked on site prior to commencement of works or manufacturing of components.
Any discrepancies to be brought to the attention of the architect - if in doubt, ask.

This drawing is the copyright of John Gilbert Architects Ltd.
No copying or distribution of this drawing or any part thereof is permitted without prior written permission.



201 White Studios, 62 Templeton Street, Glasgow, G40 1DA
Tel: 0141 551 8383
Web: www.johngilbert.co.uk

Client
BRAEMAR COMMUNITY LTD.

Project
KINDROCHIT COURT

Title
PROPOSED CYCLE STORE

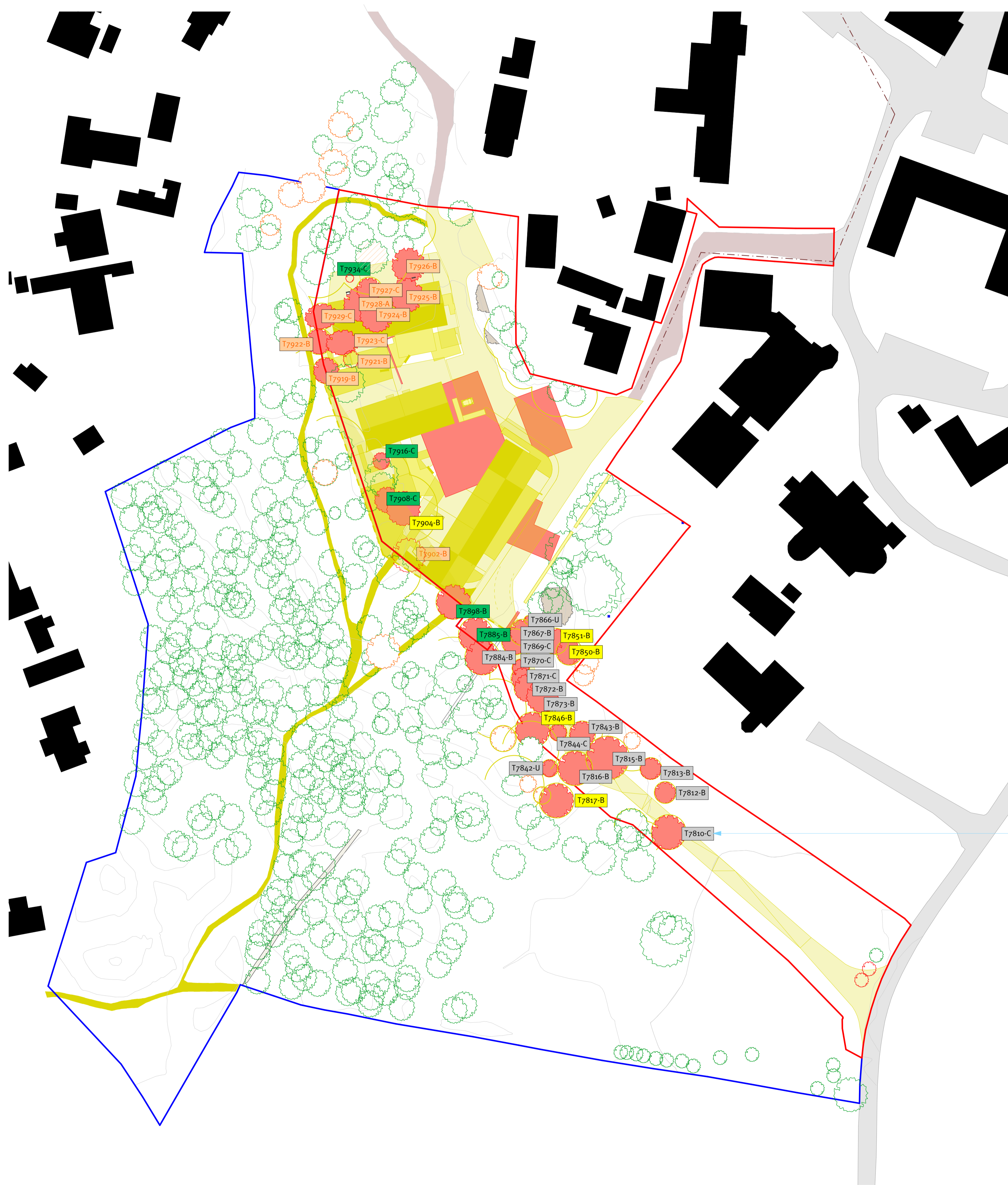
Project Status
STAGE 3 (PLANNING)

Job No. **04335** Scale at A2 **1:50**

Drawn by **DC** Date of issue **24/11/21**

Rev. Amendment Date

Drg No. Rev
[PP]20_REVA



Element ID	Layer
T7810-C	A-Zz_80_30_Aspen (Populus Tremula)
T7812-B	A-Zz_80_30_Norway Spruce (Picea Abies)
T7813-B	A-Zz_80_30_Norway Spruce (Picea Abies)
T7815-B	A-Zz_80_30_Beech (Fagus Sylvatica)
T7816-B	A-Zz_80_30_Norway Spruce (Picea Abies)
T7817-B	A-Zz_80_30_Norway Spruce (Picea Abies)
T7842-U	A-Zz_80_30_Norway Spruce (Picea Abies)
T7843-B	A-Zz_80_30_Norway Spruce (Picea Abies)
T7844-C	A-Zz_80_30_Scots Pine (Pinus Silvestris)
T7846-B	A-Zz_80_30_Norway Spruce (Picea Abies)
T7850-B	A-Zz_80_30_Norway Spruce (Picea Abies)
T7851-B	A-Zz_80_30_Norway Spruce (Picea Abies)
T7866-U	A-Zz_80_30_Scots Pine (Pinus Silvestris)
T7867-B	A-Zz_80_30_Scots Pine (Pinus Silvestris)
T7869-C	A-Zz_80_30_Scots Pine (Pinus Silvestris)
T7870-C	A-Zz_80_30_Scots Pine (Pinus Silvestris)
T7871-C	A-Zz_80_30_Scots Pine (Pinus Silvestris)
T7872-B	A-Zz_80_30_Scots Pine (Pinus Silvestris)
T7873-B	A-Zz_80_30_Common Lime (Tilia X europaea)
T7884-B	A-Zz_80_30_Norway Spruce (Picea Abies)
T7885-B	A-Zz_80_30_Norway Spruce (Picea Abies)
T7898-B	A-Zz_80_30_Norway Spruce (Picea Abies)
T7902-B	A-Zz_80_30_Scots Pine (Pinus Silvestris)
T7904-B	A-Zz_80_30_Norway Spruce (Picea Abies)
T7908-C	A-Zz_80_30_Norway Spruce (Picea Abies)
T7916-C	A-Zz_80_30_Bird Cherry (Prunus Padus)
T7919-B	A-Zz_80_30_Norway Spruce (Picea Abies)
T7921-B	A-Zz_80_30_Scots Pine (Pinus Silvestris)
T7922-B	A-Zz_80_30_Scots Pine (Pinus Silvestris)
T7923-C	A-Zz_80_30_Scots Pine (Pinus Silvestris)
T7924-B	A-Zz_80_30_Scots Pine (Pinus Silvestris)
T7925-B	A-Zz_80_30_Scots Pine (Pinus Silvestris)
T7926-B	A-Zz_80_30_Scots Pine (Pinus Silvestris)
T7927-C	A-Zz_80_30_Scots Pine (Pinus Silvestris)
T7928-A	A-Zz_80_30_Scots Pine (Pinus Silvestris)
T7929-C	A-Zz_80_30_Scots Pine (Pinus Silvestris)
T7934-C	A-Zz_80_30_Scots Pine (Pinus Silvestris)
37	

Aspen tree 'T7810-C' is to be felled and must be left lying as deadwood on the edge of the woodland with whole trunk in contact with the ground (not chopped up) as this is hugely valuable for biodiversity

Notes / Key:

Removal Type

- T7812-B Road (16 total)
- T7916-C Housing (11 total)
- T7898-B Safety (5 total)
- T7850-B Felled by storm (5 total)

Total = 37 trees

Storm Arwen has felled 5 trees, as shown with yellow tags. Then a further 4 trees have been partially felled and / or badly damaged and will need to be felled for safety reasons

Removals Proposals

Do not scale from this drawing. All existing dimensions to be checked on site prior to commencement of works or manufacturing of components. Any discrepancies to be brought to the attention of the architect - if in doubt, ask.

This drawing is the copyright of John Gilbert Architects Ltd. No copying or distribution of this drawing or any part thereof is permitted without prior written permission.



201 White Studios, 62 Templeton Street, Glasgow, G40 1DA
Tel: 01454 551 8383
Web: www.johngilbert.co.uk

Client
BRAEMAR COMMUNITY LTD.

Project
KINDROCHIT COURT

Title
TREE REMOVALS

Project Status
STAGE 3 (PLANNING)

Job No: **04335** Scale: A1
Date: **1:500, 1:1**

Drawn by: **E L** Date of Issue:

Rev.	Amendment	Date
Rev 1	Issued in response to planning comments	12.08.2022
Rev 2	Investigation of new structure added	12.08.2022
Rev 3	Revised drawings	12.08.2022
Rev 4	Drawn sheets fully final and in arranged order	14.08.2022
Rev 5	Check drawings were amended to reflect 1:500/1:1	15.08.2022
Rev 6	Trees removed as confirmed with landscape architect	