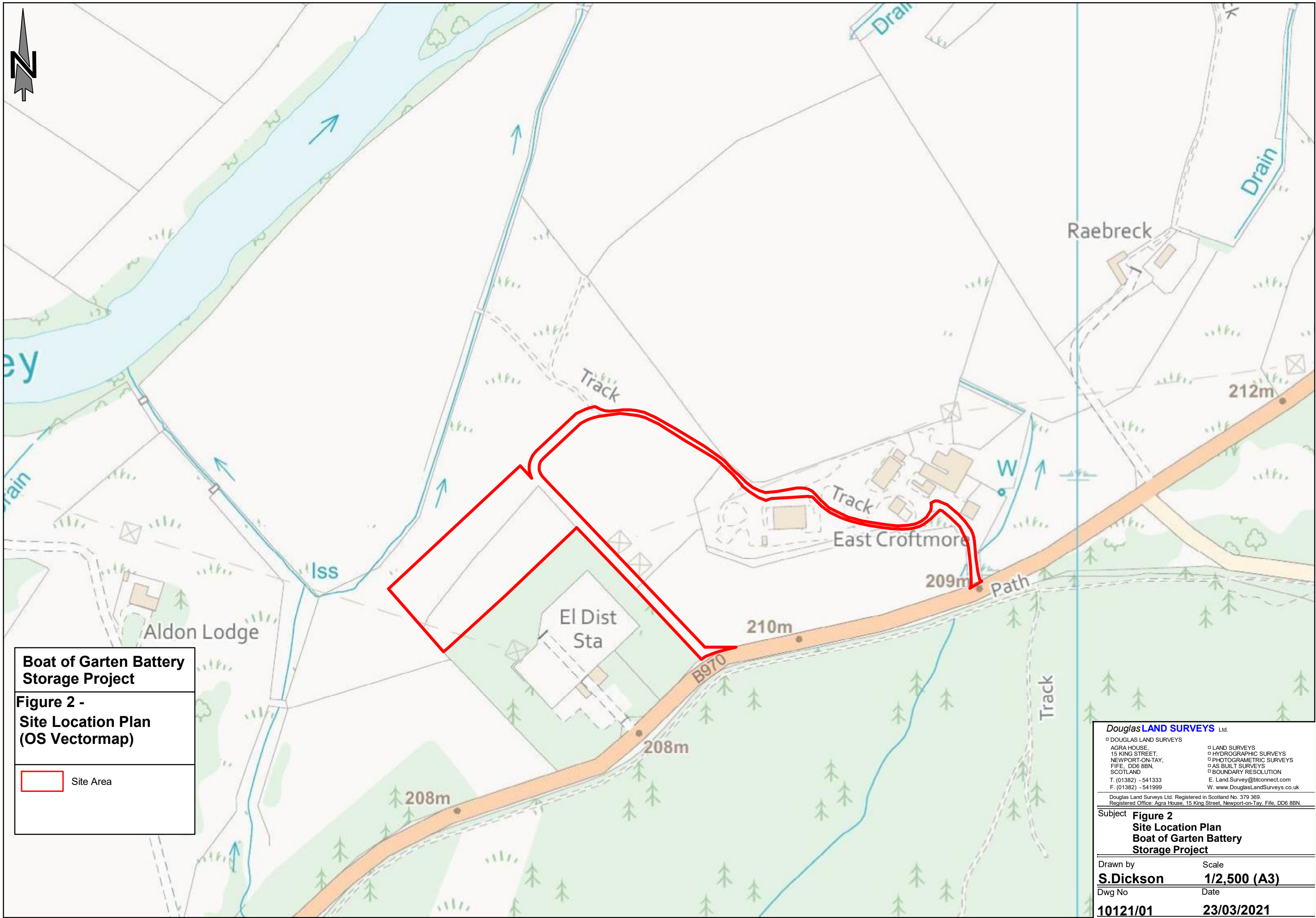


# **AGENDA ITEM 10**

## **APPENDIX I**

**PRE/2021/0015**

**PLANS**



**Boat of Garten Battery  
Storage Project**

**Figure 2 -  
Site Location Plan  
(OS Vectormap)**

 Site Area

**DouglasLAND SURVEYS** Ltd.

DOUGLAS LAND SURVEYS

AGRA HOUSE,  
15 KING STREET,  
NEWPORT-ON-TAY,  
FIFE, DD6 8BN,  
SCOTLAND  
T. (01382) - 541333  
F. (01382) - 541999

LAND SURVEYS

HYDROGRAPHIC SURVEYS

PHOTOGRAMETRIC SURVEYS

AS BUILT SURVEYS

BOUNDARY RESOLUTION

E. Land.Survey@btconnect.com  
W. www.DouglasLandSurveys.co.uk

Douglas Land Surveys Ltd. Registered in Scotland No. 379 369.  
Registered Office: Agra House, 15 King Street, Newport-on-Tay, Fife, DD6 8BN.

Subject **Figure 2  
Site Location Plan  
Boat of Garten Battery  
Storage Project**

Drawn by	Scale
<b>S.Dickson</b>	<b>1/2,500 (A3)</b>
Dwg No	Date
<b>10121/01</b>	<b>23/03/2021</b>





