



Cairngorms
National Park Authority

Ùghdarras Pàirc Nàiseanta a'
Mhonaidh Ruaidh

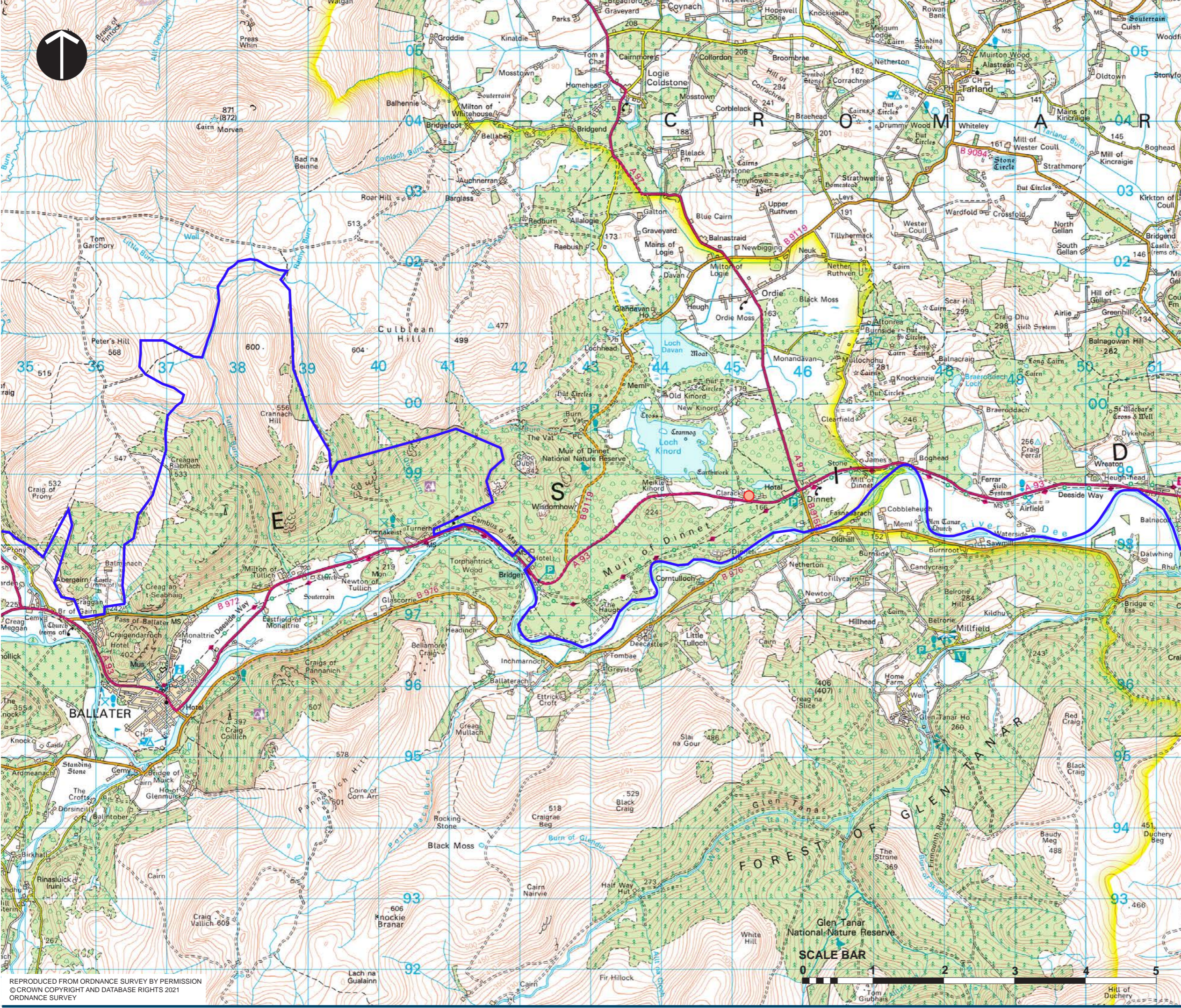
Item 8 Appendix 1 26 January 2024

Agenda item 8

Appendix 1

2023/0302/DET

Plans



LEGEND

- SITE LOCATION
- DINNET AND KINNORD ESTATE



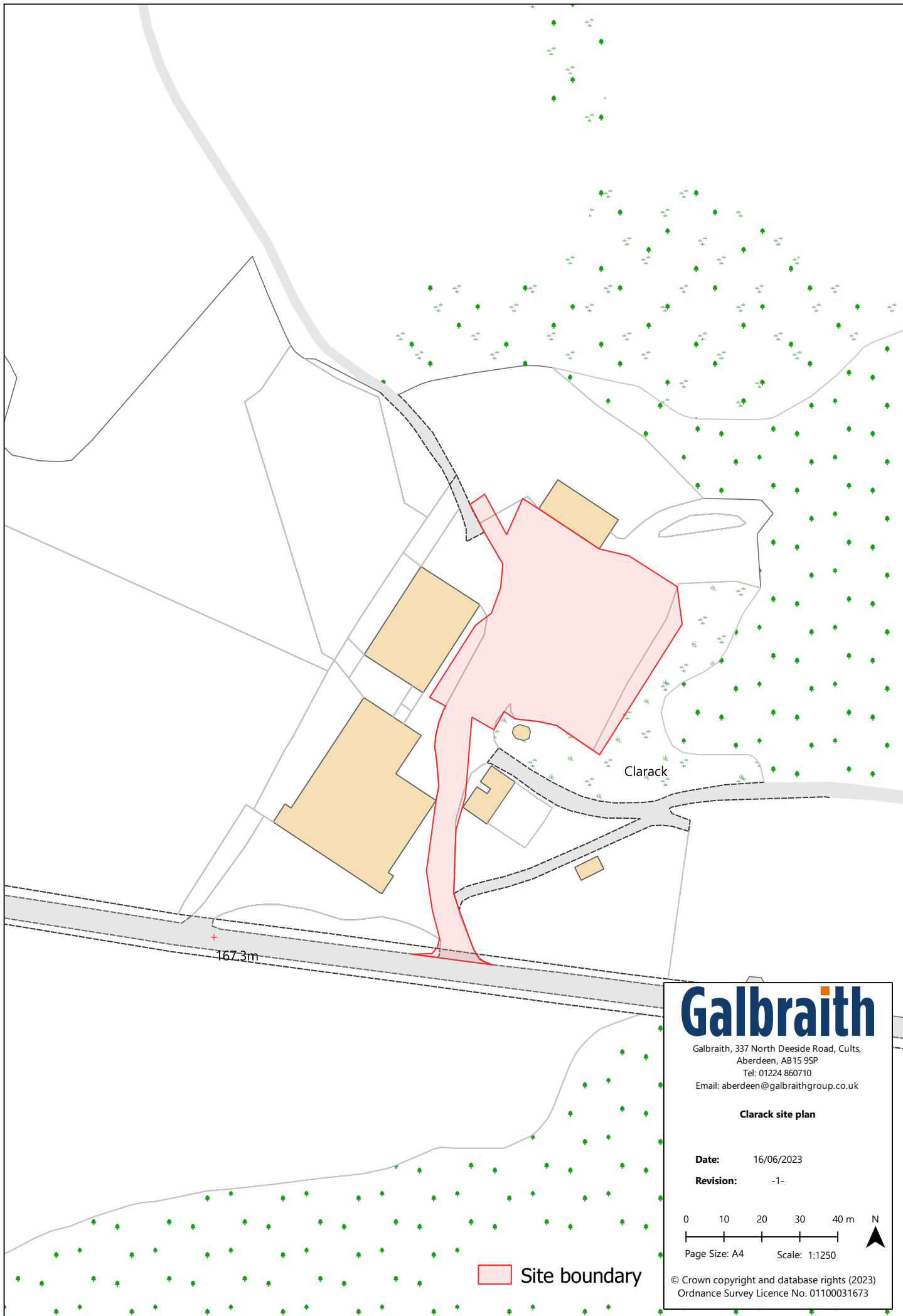
Proposed Car Park at Clarack,
Dinnet & Kinnord Estate,
Dinnet

location plan

REPRODUCED FROM ORDNANCE SURVEY BY PERMISSION
© CROWN COPYRIGHT AND DATABASE RIGHTS 2021
ORDNANCE SURVEY

798750

798750



Galbraith
 Galbraith, 337 North Deeside Road, Cults,
 Aberdeen, AB15 9SP
 Tel: 01224 860710
 Email: aberdeen@galbraithgroup.co.uk

Clarack site plan

Date: 16/06/2023
Revision: -1-

0 10 20 30 40 m N

Page Size: A4 Scale: 1:1250

© Crown copyright and database rights (2023)
 Ordnance Survey Licence No. 01100031673

Site boundary

LEGEND

	SITE BOUNDARY		VISITORS INTERPRETATION / INFORMATION BOARDS
	ACCESS APRON, ACCESS ROAD AND INTERNAL CAR PARK LAYOUT - UTILISE EXISTING SURFACE AS SUB-BASE WITH TYPE 1 FINISHED SURFACE LAYER AND COMPACTED TO ENSURE FINISHED LAYER FLUSH WITH ADJACENT GROUND LEVELS		ENTRANCE SIGN V BOARD - AT THE ACCESS JUNCTION OFF THE A83
	CAR PARKING BAYS - UTILISE EXISTING SURFACE AS SUB-BASE WITH TYPE 1 FINISHED SURFACE LAYER AND COMPACTED TO ENSURE FINISHED LAYER FLUSH WITH ADJACENT GROUND LEVELS. LOCALLY SOURCED STONE TO DEFINE CAR PARK AREAS & DELINEATE BAYS		POST MOUNTED ANPR SIGN
	EXISTING FENCE TO BE RETAINED		ANPR CAMERA
	RYLOCK (TRADITIONAL GALVANISED STOCK FENCE) AND TIMBER POST AND 2 WIRE FENCE TO DEFINE CAR PARK AREA		LITTER BIN
	DEER FENCING TO RESTRICT VISITOR ACCESS TO EXISTING BUILDING AREAS		SOFT LANDSCAPE PROPOSALS
	DISABLED TOILET UNIT ON COMPACTED TYPE 1 AND TIMBER BOARDED SCREENING		EXISTING SINGLE MATURE TREE ON WESTERN BOUNDARY TO BE RETAINED
	'SHEFFIELD' CYCLE STANDS, GALVANISED STAINLESS STEEL, BY BROXAP OR EQUAL APPROVED		EXISTING HEDGE ALONG THE A93 TO BE REMOVED TO ACCOMMODATE SIGHT LINES
	CAR PARKING TICKET MACHINES ON AREA OF COMPACTED TYPE 1		NATIVE HEDGE (TO COMPENSATE FOR HEDGE REMOVALS)
	TRENCH SOAKAWAY (REFER TO ENGINEER'S DRAINAGE LAYOUT DRAWING)		SPECIMEN TREES
			STRUCTURE TREES (PLANTED OUT-WITH RED LINE)
			AREAS MANAGED AS LONG GRASSLAND ACROSS THE FRINGES TO THE CAR PARK - HARD WEARING GRASS SEED BY GSS OR EQUAL APPROVED
			PERISHED TREES TO BE RE-PLANTED (3no. Oak & 3no. Rowan)

PLANTING SPECIFICATION

GENERAL NOTES

WORKMANSHIP: All workmanship to relevant British standards and Codes of Practice. All tree operations to be in accordance with BS 8545: 2014 Trees: From Nursery to Independence in the landscape - recommendations. All landscaping operations to BS 4428: 1988 and as set out in BS 5830: Part 1 (1982), Part 2 (1987) and Part 3 (1992). Use tools and machinery suitable for use and comply with Health and Safety Regulations. The Landscape Contractor must follow good husbandry practice and allow for keeping all new planting and grassed areas well watered during the defects liability period/maintenance period of the contract. All plants to be supplied in the condition and planted at the density specified in the planting schedule. All planting to be carried out under the authorisation of the supervising officer only and include:

SITE CLEARANCE: Remove rubble, concrete, discarded vegetation, foreign material and stones exceeding 50mm prior to cultivation.

CLIMATIC CONDITIONS: Carry out the works while soil and weather conditions are suitable for the relevant operations. Ground preparation should be carried out during dry periods; in very wet weather there is potential to damage soil structure and a serious increase in water run-off and erosion. If possible, allow cultivation to settle prior to planting. Carry out tree and shrub planting between October and late March.

GROUND PREPARATION: Ground preparation will be necessary before planting takes place to improve the soil conditions and suppress weeds. The objectives of ground preparation need to be achieved with minimal soil disturbance. Apply a suitable non-herbicidal herbicide to planting areas. Supply and spread a suitable fertiliser, 'Zeneca Termag' or equivalent, as appropriate over all planting areas following detailed analysis of ameliorated and any imported soil material.

PLANTS - GENERAL: Upon receiving plant stock on site, quality of stock should be checked to ensure - planting stock should be undamaged, sturdy, healthy, vigorous, of good shape and without elongated shoots. Stock should be free from pests, diseases, dieback and physiological disorders with balanced root and branch systems, root system and condition and true to name in accordance with the National Plant Specification. A fact is to be planted within four weeks of arrival, they can stay in the bags. For longer storage plants should be taken out of bags, roots covered with soil.

TOPSOIL: All grass areas and tree pits to receive topsoil. The standard for the quality, handling and spreading of imported and existing topsoil shall be in accordance with BS3882: 2015 and to be brought in from an approved source. Topsoil under the surface will be tested by laser grading. The surface of the planting will be raised then cultivated using rigid agricultural tines spaced with slots and angles removed. Topsoil spread and levelled without plant or machinery traversing or over compacted areas or previously spread soils to give an advised thickness as specified below. Prior to spreading of topsoil, the Landscape Contractor shall inspect and confirm the suitability of subsoil levels and preparation. Finished topsoil levels after soil operations to be 50mm higher than adjacent car park road and rolling over gently ensuring new grass areas are flush to the road edge. All new grass areas to be topped to a minimum depth of 150mm.

EXISTING TREES / VEGETATION COVER: There are some areas of tree cover close to the northern and eastern boundaries, but do not require any protection.

NEW TREE SUPPORT/PROTECTION: All trees and hedgerow plants to be protected with a tubex tree guard. Landscape Contractor to ensure all new planting is adequately protected from voles, rabbits, etc. using appropriately sized protective shelters supported by canes and wooden stakes.

WATERING: After planting thoroughly water planted areas ensuring full depth of topsoil is thoroughly wet. Continue to water through the growing season to ensure the establishment & continued thriving of all planting.

IMPLEMENTATION: Implementation of the landscape works shall be in accordance with the development programme presented for the site. It is intended that soft landscape works will be implemented in tandem with the commencement of the construction works and therefore cell grown plants have been specified to ensure good establishment.

SPECIFICATION FOR EACH SOFT LANDSCAPE COMPONENT

SPECIMEN / FEATHERED TREES

- Trees shall be planted at the appropriate season depending on root grown or bare root, and in line with BS 8545:2014 Trees: From Nursery to Independence in the landscape.
- Tree pits to be dug not less than 250mm larger than the overall root spread. Care is to be taken to ensure that all sides are permeable and have not been "coloured" and that pits are free draining with 50mm of washed material graded to the base of the tree pits.
- A pressure treated timber stake 75 x 75mm shall be used. It shall extend 500mm above the finished soil level, with a proprietary tie at 150mm above the stake. One tie shall be used on right standard trees up to 2m high and two will be required for Selected Standard trees up to 18cm girth.
- For specimen trees (heavy standard), an urban watering system such as 'Mona Relief' by Green-Tech (or equal and approved) with neat clearly visible to be installed around root system to enable watering during the establishment period and dry weather.
- Quality for the tree pits to be 20% Peat-Free Compost, Fison's or similar approved.
- To protect the water pipe which runs through the site from tree roots, a rootbarrier mat shall be installed for trees in close proximity, such as Rootbarrier 325 by Green-Tech (or equal and approved). Install to manufacturers instructions.
- The benefit to be a raised mound at the top with the centre 150mm above the hedge. Care is to be taken to ensure that the finished backfill level is the nursery level on the tree and that level is at the centre of the mound 150mm above the edge of the pit when the tree has been well firm in.
- On completion of the planting the tree shall not be less than 10 litres of water. Thereafter it should be watered as required, following periods of any more than three consecutive hot dry days, until the tree is fully established.

GRASS AREAS

- Areas to be grass seeded are to be carefully checked to ensure that the soil is appropriate and free from rubble, stones, weeds and other deleterious material. If not appropriate, it should be replaced with quality material with the Landscape Architect should be advised.
- Where topsoil is to be added the subsoil should be fully broken up to ensure adequate drainage and a layer not less than 150mm deep applied.
- The topsoil should be cultivated to a fine, even tilt with no undulations or bumps.
- Pre-seeding, fertiliser applied. Seed to be sown in Autumn or Spring or other times of the year there is sufficient warmth or moisture. Seed must be sown and can be applied by machine or broadcast by hand. Do not incorporate or cover the seed but firm in with a roll or by treading to give good soil / seed contact. A hard wearing, durable quality grass seed mix sown as specified by supplier.
- All grass areas to be seeded in accordance with guide-lines set out in BS 4428: Code of Practice for general landscape operations - 1988, and with an approved proprietary mix applicable to the location.
- Areas designated for grass seed are appropriate for an' calculations.
- Areas will be seeded AFTER the removal of existing deleterious plant and landscape material.

NATIVE HEDGE

- Planting beds to be carefully set out using the line of the hedge as the length of the soil checked to ensure that it meets the standards set out in BS 3882: 2007. If it does not it should be replaced with the appropriate quality material.
- After achieving the correct quality topsoil and with the base broken up (if topsoil is imported) the soil shall be cultivated to ensure a ridge, set 150mm above the edge of the bed, is created and into which the hedge is planted.
- When beds have been fully cultivated and formed, planting holes shall be dug 150mm wider than the root spread. Bare-root plants shall have the roots carefully heeled out and job-grown plants shall have the roots carefully loosened from the soil 2 to 2.5 times, depending on the size of the plant, of Fison's Peat-Free Planting Compost, or similar approved, shall be worked into the backfill. The plants shall be planted to the finished topsoil level at the nursery level on the stem of the plant.
- Plants planted in two staggered rows, rows 20mm apart.
- The plants shall be well firm in and, after planting, a slow acting fertiliser shall be carefully worked into the top 50mm of soil round each plant taking care to avoid contact with the stem.
- Immediately after planting the whole bed shall be well watered in.
- Planting should not be undertaken below 2 degrees centigrade, or when the ground is snow covered or frozen.

TOTAL PLANT SCHEDULE

SPECIMEN TREES			
ABB	SPECIES	SIZE / ROOT CONDITION	DENSITY
Bp	Betula pendula	12-14cm girth, 3.5m, C	As shown 4
Qp	Quercus petraea	12-14cm girth, 3.5m, C	As shown 3

All of the above trees to be Heavy Standard size (12-14cm), double staked and container grown. Where trees are planted in grass areas, an area of 1m diameter at the base of the tree should be mounded and kept clear of weeds, grass and other deleterious material.

STRUCTURE TREES			
ABB	SPECIES	SIZE / ROOT CONDITION	DENSITY
Pa	Prunus avium	6-8cm girth, 2.5-2.75m, C	As shown 10
St	Sorbus aucuparia	6-8cm girth, 2.5-2.75m, C	As shown 9

All of the above trees to be Light Standard size (6-8cm), single staked and container grown. Where trees are planted in grass areas, an area of 1m diameter at the base of the tree should be mounded and kept clear of weeds, grass and other deleterious material.

GRASS MIX ACROSS AMENITY AREAS		
SPECIES MIX AS SPECIFIED BY SUPPLIER	SOWING RATE	TOTAL AREA m ²
	3g / m ²	250

NATIVE HEDGE (6 PLANTS PER 1M IN TWO STAGGERED ROWS)			
%	SPECIES	SIZE / ROOT CONDITION	DENSITY
20%	Corylus avellana	60-80cm, BR	5 shrubs /
30%	Crataegus monogyna	60-80cm, BR	Linear metre 119
2%	Lonicera periclymenum	Scm job	20
20%	Prunus spinosa	60-80cm, BR	79
5%	Rubus fruticosus	60-80cm, BR	20
20%	Viburnum opulus	60-80cm, BR	79



Example of proposed car park ticket machine



REVISIONS	DRAWN BY	DATE
REVISION A: Annotation and trench soakaway added to drawing and scale bar amended	VLM	20.4.21
REVISION B: Car park bays, location of bike stands and ticket machine, and access path in north-west corner amended. All hard surface finishes to be Type 1. Existing and proposed hedgerows removed. All proposed trees proposed out-with the red line. Red line reduced.	VLM	25.3.22
REVISION C: Proposed trees near north-east boundary re-located to allow access to the existing agricultural building.	VLM	05.4.22
REVISION D: 2no. disabled bays added. Location of soakaway added.	VLM	26.5.22
REVISION E: Marginal adjustment to the location of a few proposed trees in the north-western corner; additional interpretation board added; re-location of soakaway to east of junction. Changes to reflect "as-built" locations on Site.	VLM	18.6.23
REVISION F: Marginal adjustment to the location of trees along northern and eastern boundaries; addition of: compensatory native hedge planting, pole and fence mounted ANPR, ANPR camera, disabled toilet unit and timber screening, a litter bin, and, V board entrance sign.	VLM	17.11.23
REVISION G: Trees which have perished have been highlighted and will be re-planted with same species (3no. Oak & 3no. Rowan).	VLM	11.12.23

SCALE
0 5 10 15 metres



SCALE
0 5 10 15 metres

NOTES

Only scale for planning purposes. All dimensions confirmed on site. All dimensions shown in metres unless otherwise stated. Copyright of this drawing and its contents subsists with VLM Landscape Design Ltd. Cross refer with the Site Layout by the Traffic Consultants. Cross refer with the Engineer's drainage drawings.

PROJECT	
PROPOSED CAR PARK, AT CLARACK, DINNET AND KINORD ESTATE	
CLIENT	JOB REF.
DINNET AND KINORD ESTATE	A2104
DRAWING NUMBER	REVISION
L(90)0001	G

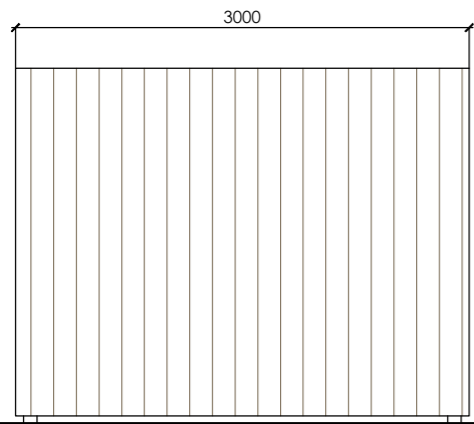
DRAWING TITLE	
General Arrangement Plan - Hard & Soft Landscape Proposals	
PROJECT STAGE	
PLANNING	
SCALE	DRAWN BY
1:250	VLM
DATE DRAWN	CHECKED BY
February 2021	VLM

SCALE	A1	A3	DRAWN BY
	A2	A4	VLM
DATE DRAWN	CHECKED BY		
February 2021	VLM		

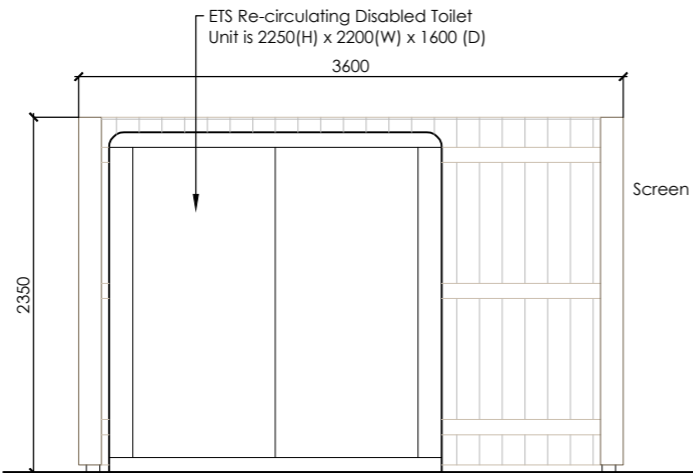
landscapedesign

VLM Landscape Design Ltd
37 Silverknowes Drive
EDINBURGH
EH4 5LQ

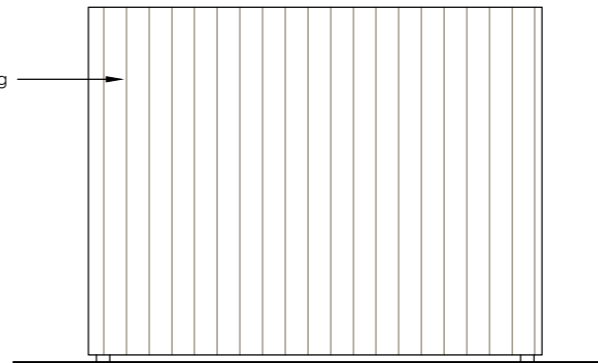
m:07870384029
e:vicloria@vmlandscape.com
www.vmlandscape.com



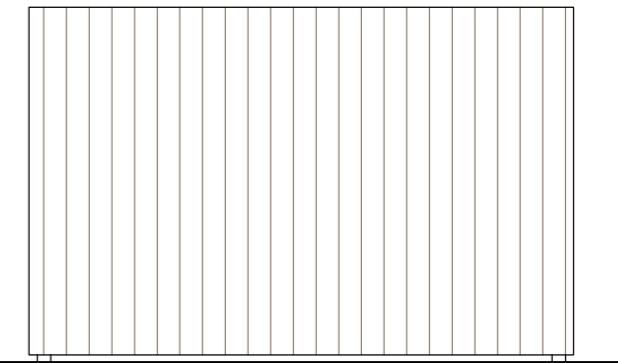
South-Eastern elevation



North-Eastern elevation



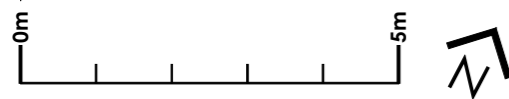
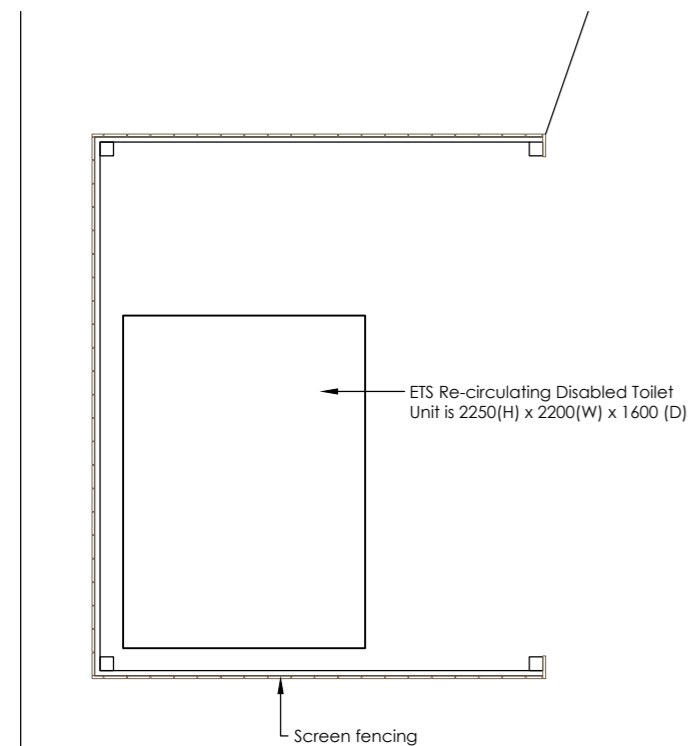
North-Western elevation



South-Western elevation

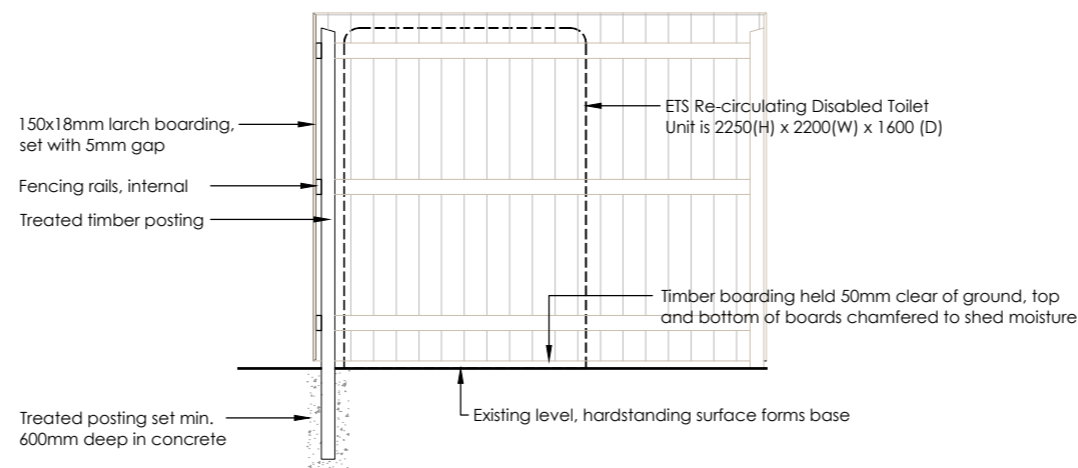
Elevations

Scale: 1:50



Plan

Scale: 1:50



Section

Scale: 1:50

Carpark at Clarack Dinnet, Aboyne Aberdeenshire	
Retention of car park facilities	
Toilet block screening	
Date : Nov 2023	Drawing No.
Scale : 1:50 @ A3	2023-102/P01A
Drawn : PH	
Gerry Robb architectural design services	
Bridgend Bridgeview Road Aboyne Aberdeenshire AB34 5HB (013398) 86359 info@gerryrobb.co.uk	