

National Park Partnership Plan Outcome Indicators

The ten National Park Partnership Plan 5-year outcomes have indicators to help demonstrate progress. Those indicators are summarised in the Table I of the Board paper.

We propose to use the summary table as a web page with links to these more detailed sheets on each indicator. Our intention is that each sheet gives a simple explanation of what the indicator is, the data it uses and what it shows.

Five Year Outcomes	Indicators	Indicator Reference
The economy of the Park will have grown and diversified, drawing on the Park's special qualities	Business confidence reported through Cairngorms Business Barometer	CNPPPI_01
	Number of jobs created in the Park	CNPPPI_02
Businesses and communities will be successfully adapting to a low carbon economy	% population living within connection of high speed broadband or equivalent	CNPPPI_03
	Renewable energy production	CNPPPI_04
Communities will be more empowered and able to develop their own models of sustainability	The number of community enterprises generating income	CNPPPI_05
The quality and connectivity of habitats is enhanced	Area of woodland	CNPPPI_06
	Water quality	CNPPPI_07
The species for which the Park is most important are in better conservation status	Active conservation for LBAP priority species	CNPPPI_08
	Estates participating in Wildlife Estates Initiative	CNPPPI_09
The special landscape qualities, including wildness, are conserved and enhanced	Qualities of wildness	CNPPPI_10
Settlements and built development will retain and enhance the distinct sense of place and identity in the Park	Number of conservation area improvement projects	CNPPPI_11
More people will enjoy, learn about and help to conserve and enhance the Park	Number of volunteer days spent caring for the Park per year	CNPPPI_12
The expectations of visitors are met or exceeded	Visitor satisfaction reported in Cairngorms Visitor Survey	CNPPPI_13
The Park's recreation opportunities have improved the health and enjoyment of residents and visitors	Number of people using promoted core paths	CNPPPI_14

Indicator ref:	CNPPPI_01
Indicator:	Business confidence reported through the Cairngorms Business Barometer
Last update:	19 August 2013
Next update:	Expected November 2013
Source:	Cairngorms Business Partnership Business Barometer

This indicator shows change in business confidence reported by Cairngorms Business Partnership Members in their Business Barometer survey carried out every 3 months.

Headline:

Business confidence generally rising since start of 2012/13.

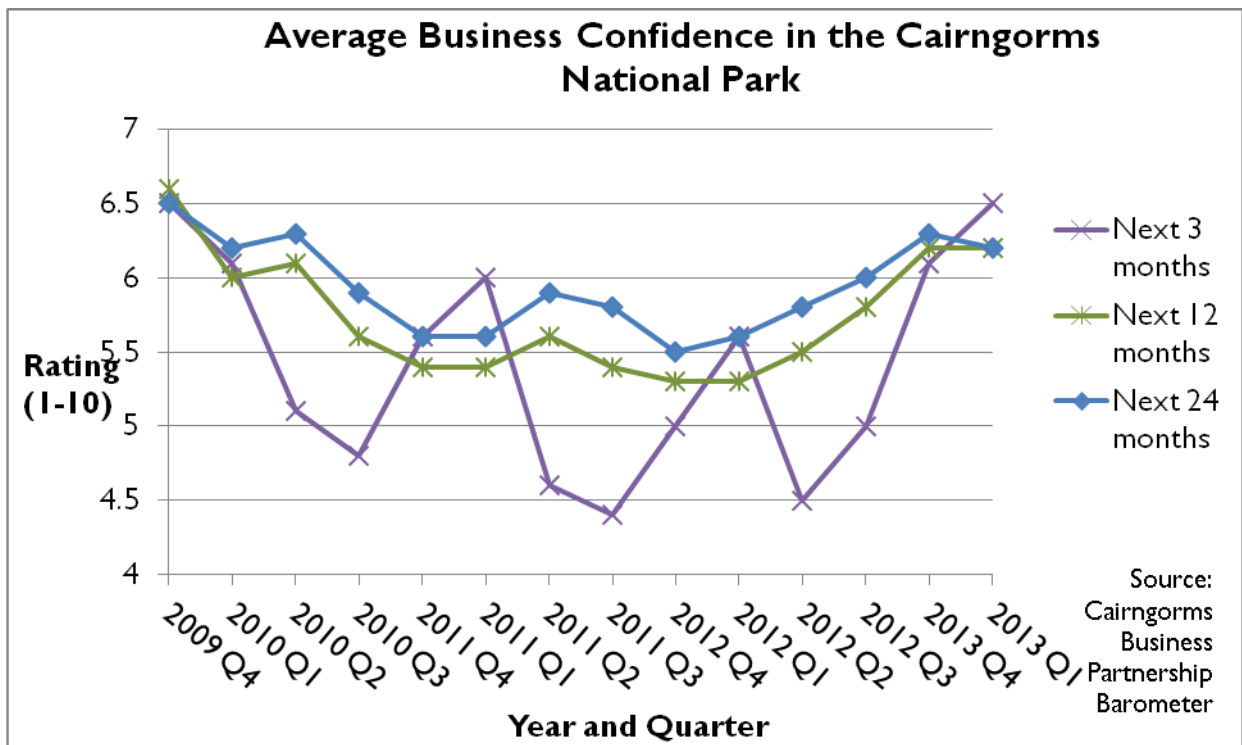


Table of Data		Business confidence on scale of 1-10		
Year	Quarter	Next 3 months	Next 12 months	Next 24 months
2009 - 2010	Q4 Jan to March	6.5	6.6	6.5
2010 – 2011	Q1 April to June	6.1	6	6.2
	Q2 July to September	5.1	6.1	6.3
	Q3 October to December	4.8	5.6	5.9
	Q4	5.6	5.4	5.6
2011 - 2012	Q1	6	5.4	5.6
	Q2	4.6	5.6	5.9
	Q3	4.4	5.4	5.8
	Q4	5	5.3	5.5
2012 - 2013	Q1	5.6	5.3	5.6
	Q2	4.5	5.5	5.8
	Q3	5	5.8	6
	Q4	6.1	6.2	6.3
2013 - 2014	Q1	6.5	6.2	6.2

Notes:

1. The Cairngorms Business Partnership has been measuring the business confidence of its members each quarter on an annual basis. Members are asked to rate their Business confidence on a scale of 1 to 10, where 1 is very low and 10 is very high.
2. Business Confidence is a measure of the level of optimism of businesses/ companies in the CNP have about the performance of the economy and how they feel about it in the short-term (3 months), medium-term (12 months) and long-term (24 months).
3. The graph above illustrates the findings for the Cairngorms Business Partnership Barometer over the past 3 years.

Source: www.visitcairngorms.com

Indicator ref:	CNPPPI_02
Indicator:	Number of jobs created in the Park
Last update:	20 August 2013
Next update:	Expected 2014
Source:	Office for National Statistics & Scottish Neighbourhood Statistics

This indicator will measure the number of jobs created in the Cairngorms National Park. A methodology for collecting this data on an annual basis is being and we expect to be able to collect annual data from 2014 onwards.

Indicator ref:	CNPPPI_03
Indicator:	Percentage of the population living with connection to high speed broadband or equivalent
Last update:	3 June 2013
Next update:	Expected end 2013
Source:	Cairngorms National Park Authority

This indicator will measure the percentage of the population of the Park living within connection to high speed broadband.

Notes

1. There is currently no access to high speed broadband within the Cairngorms National Park. Many larger communities have access to broadband via the telephone network while remoter rural communities have poor or no connections.
2. Scottish Government (SG) and Highlands & Islands Enterprise (HIE) are working with Local Authorities to deliver superfast Broadband to the whole of Scotland by 2020 with a step-change by 2015. The aim for 2015 is to have 75-85% of the population receiving 40Mbps or above – the remaining 15-25% should have at least 2Mbps.
3. HIE and SG have undertaken separate procurement exercises to deliver this ambitious project in their respective areas. The HIE contract covers the Highlands and Islands and Moray, and in March it was announced that HIE had signed a £145.8m (£126.4m of public money and £19.4m from BT) contract with BT that will mean that 84% of the population in the HIE area will get access to high speed fibre broadband for the first time.
4. The procurement exercise for the rest of Scotland (including Aberdeenshire, Angus and Perth & Kinross Councils) is estimated to be complete by June/July. SG is working with Local Authorities to secure additional funding contributions for this project and Aberdeenshire Council has already committed an extra £16m to the project.
5. British Telecom will launch a website in late 2013 that will tell people whether commercial next generation broadband will ever reach their postcode.

Source: www.cairngorms.co.uk

Indicator ref:	CNPPPI_04
Indicator:	Energy produced by Renewables in the Cairngorms National Park
Last update:	31 May 2013
Next update:	Expected May 2014
Source:	Department of Energy and Climate Change & Ofgem

This indicator shows the energy production from renewable energy sources in the Cairngorms National Park.

Headline:

Renewable Energy production increasing in the Park.

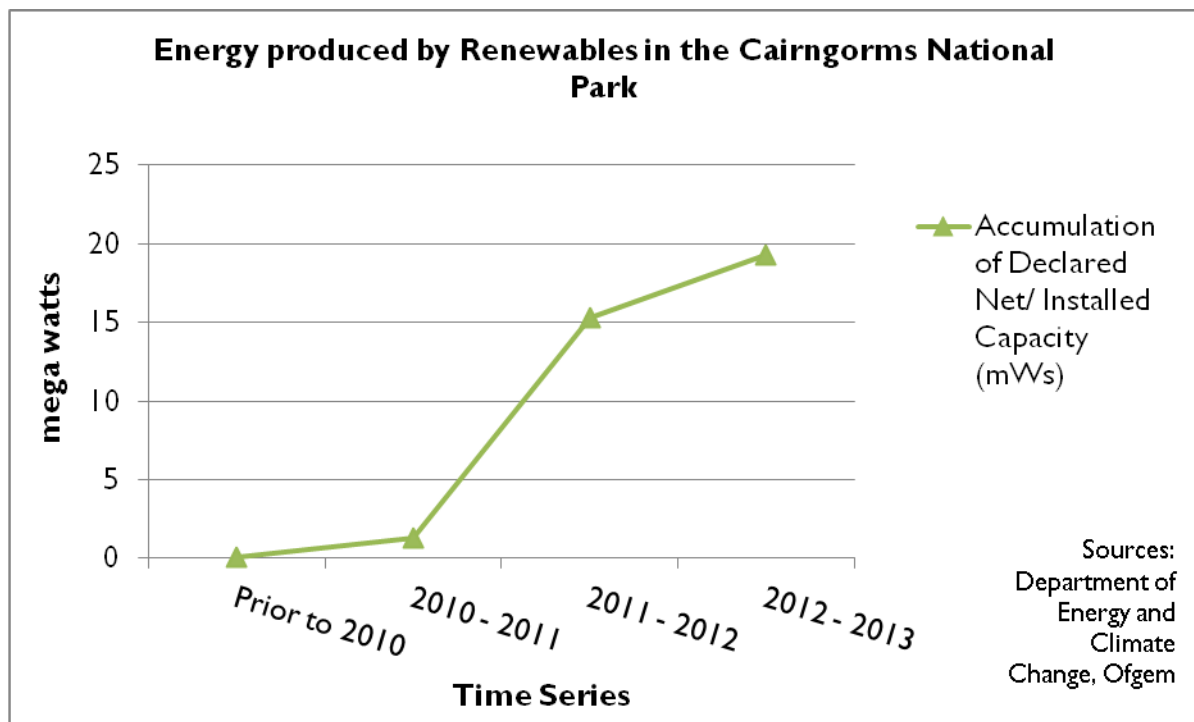


Table of Data (to be displayed by energy source)		
Year	Declared Net/ Installed Capacity (mWatts)	Total of Declared Net/ Installed Capacity (mWatts)
Prior to 2010	0.086	0.086
2010 - 2011	1.235	1.321

2011 - 2012	13.963	15.285
2012 - 2013	4.046	19.331

Notes:

1. The graph above shows the steady increase in the generating capacity of renewable energy installations (Hydro, Wind, Photovoltaic, Ground and/ or Air Source Heat Pump, Solar Keymark, Biomass and Solar Thermal) in the Cairngorms National Park.
2. The data is made up of:
 - Gernserv's data on Microgeneration Certification Scheme (MCS)
 - Ofgem's data on Feed-In Tariffs (FITs) & Renewable Heat Incentive (RHI)

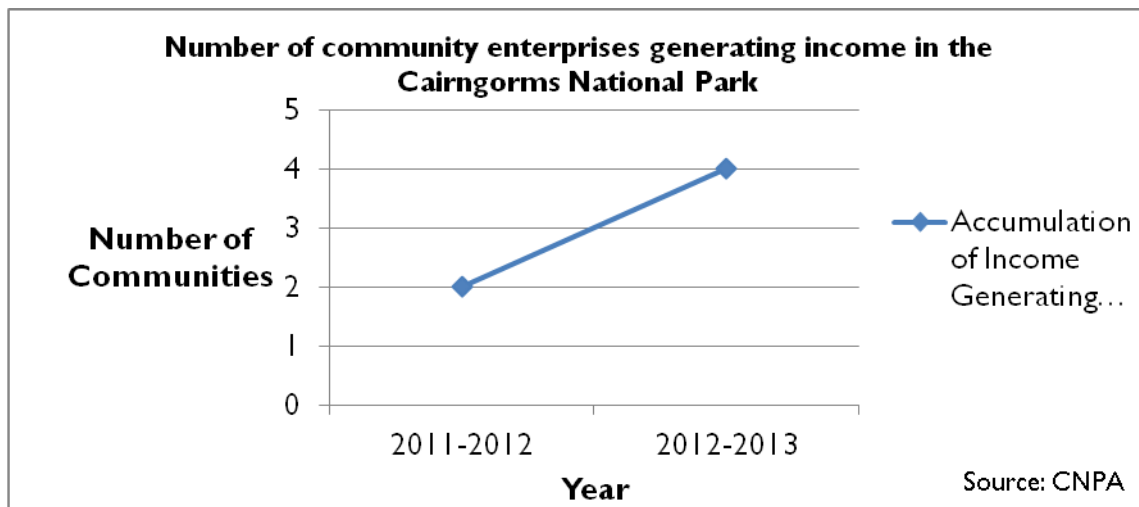
Sources: www.microgenerationcertification.org
www.ofgem.gov.uk

Indicator ref:	CNPPPI_05
Indicator:	The number of community enterprises generating income in the Cairngorms National Park
Last update:	31 May 2013
Next update:	Expected April 2014
Source:	Cairngorms National Park Authority

This indicator records the number of community enterprises generating income in the Cairngorms National Park.

Headline:

More Community enterprises generating income.



Year	Number of income generating communities	Total
2011 - 2012	1. Ballater Royal Deeside	2
	2. Boat of Garten Community Company	
2012 - 2013	3. Kingussie Community Development Company	4
	4. Tomintoul & Glenlivet Development Trust	

Notes:

Indicator ref:	CNPPPI_06
Indicator:	Area of Woodland in the Cairngorms National Park
Last update:	2011
Next update:	By end 2013
Source:	Forestry Commission Scotland

This indicator will measure woodland expansion in the Cairngorms National Park through new planting.

Notes:

1. The total woodland in the Cairngorms National Park was estimated at 63,403 Ha in 2011 from Forestry Commission Scotland's National Forest Inventory. Forestry Commission Scotland will provide data on new woodland planting by the end of 2013.

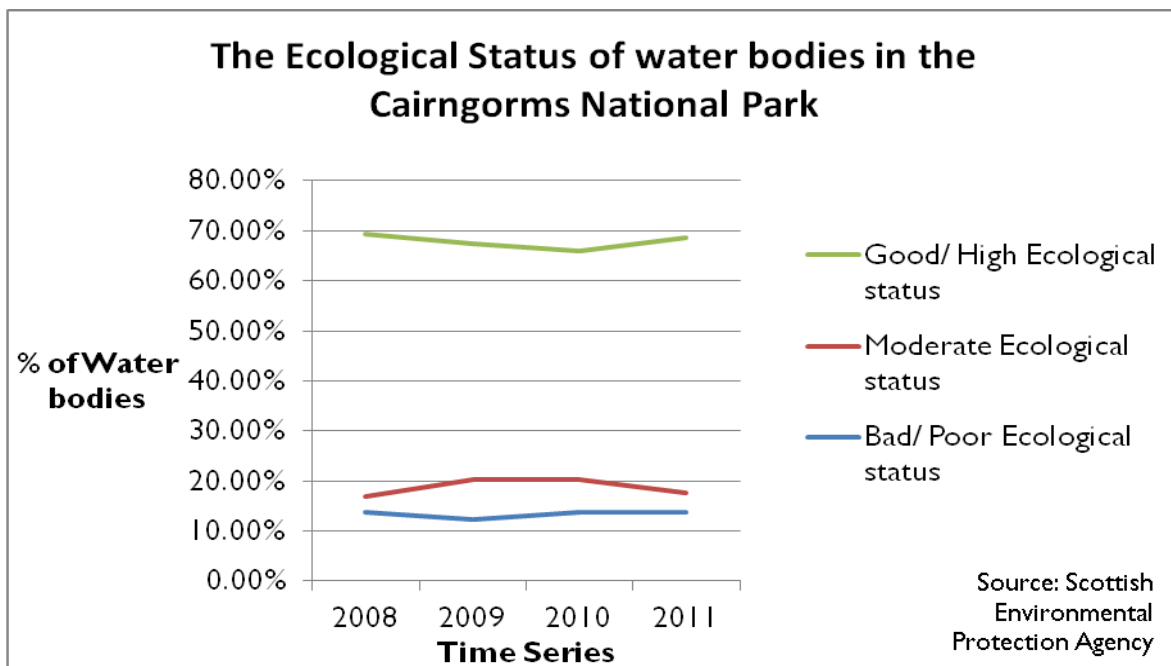
Source: www.forestry.gov.uk/scotland

Indicator ref:	CNPPPI_07
Indicator:	The ecological status of water bodies in the Cairngorms National Park
Last update:	March 2013
Next update:	Expected December 2013
Source:	Scottish Environmental Protection Agency

This indicator assesses the ecological status of water bodies in the Cairngorms National Park.

Headline:

Ecological status of water bodies in the Park rose to 2011.



Class	% of Water Bodies			
	2008	2009	2010	2011
Bad/ Poor Ecological status	13.73%	12.42%	13.73%	13.73%
Moderate Ecological status	16.99%	20.26%	20.26%	17.65%
Good/ High Ecological status	69.28%	67.32%	66.01%	68.63%

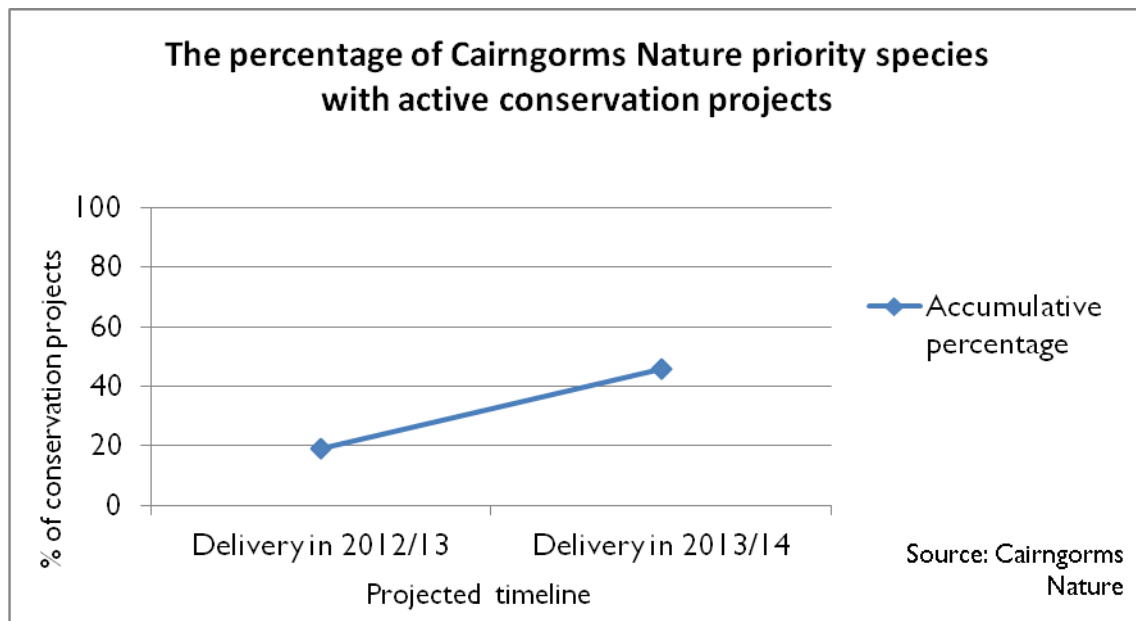
Notes:

1. There are 153 rivers and loch in the Cairngorms National Park. The classification system covers all rivers, lochs, transitional, coastal and ground waters which are split into management units called water bodies; a classification is produced for each water body.
2. Classification of water bodies is based on an ecological classification system with five quality classes (High, Good, Moderate, Poor and Bad). The “Overall status” is a combination of Overall Chemistry and Overall Ecology.
3. Data will be updated annually towards the end of the year, when the Scottish Environmental Protection Agency (SEPA) publish results.

Source: www.sepa.org.uk

Indicator ref:	CNPPPI_08
Indicator:	Active conservation for Cairngorms Nature priority species
Last update:	20 August 2013
Next update:	Expected April 2014
Source:	Cairngorms Nature

This indicator shows the number or percentage of the Cairngorms Nature Plan's priority species for which there are active conservation projects underway.



	Number of species with conservation projects
Delivery in 2012/13	5
Delivery in 2013/14	8
Total in 2012 - 2014	13
Planned for 2014-2018	13

Notes:

1. There are 26 priority species in the Cairngorms National Park:

Cairngorms Priority Species		
2012/13 projects	2013/14 projects	
Wildcat	Pearl bordered fritillary	Alpine blue sow thistle
Mountain hare	Northern February red stonefly	Twinflower
Red squirrel	Northern damselfly	One flowered wintergreen
Golden eagle	Kentish glory	Tufted saxifrage
Capercaillie	Dark bordered beauty	Green shield moss
Lapwing	Freshwater pearl mussel	Scarlet splash
Small dark yellow underwing	Violet oil beetle	Crimson waxcap
Mining bee	Northern silver stiletto fly	Powdered sunshine lichen
Pine hoverfly	Wood ants (4 species)	

2. Of the 26 priority species in the Cairngorms National Park, 5 conservation projects are continuing to be delivered and a further 7 are being delivered during 2013/2014.

Source: www.cairngorms.co.uk

Indicator ref:	CNPPPI_09
Indicator:	Estates in the Cairngorms National Park participating in Wildlife Estates Scotland Initiative
Last update:	11 July 2013
Next update:	Expected May 2014
Source:	Scottish Land and Estates

This indicator shows the number/percentage and area of land of estates who have signed up for Wildlife Estates Scotland Initiative in the Cairngorms National Park.

Headline:

No new estates have entered Wildlife Estates Initiative Scotland during 2012/13, but estates have moved from level one to level 2 of the scheme. 85% of the area of the Park is managed by estates participating the Initiative.

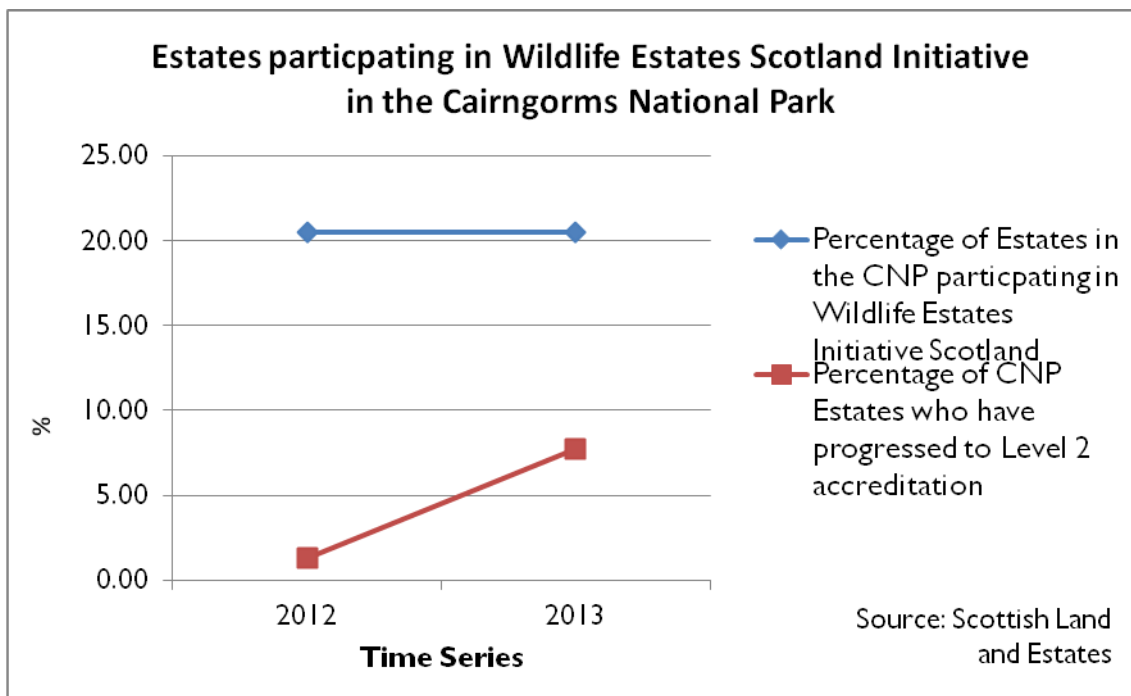
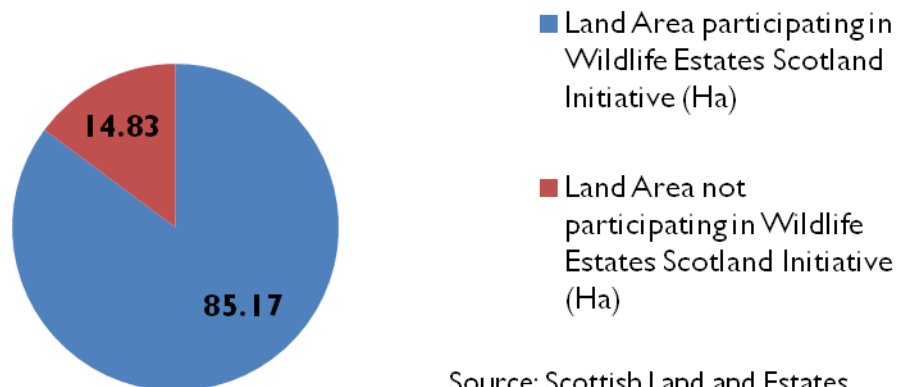


Chart 2

Estimated Cairngorms National Park Land Area coverage participating in Wildlife Estates Scotland Initiative (levels 1&2); 2013



Source: Scottish Land and Estates

Insert a map showing participating estates.

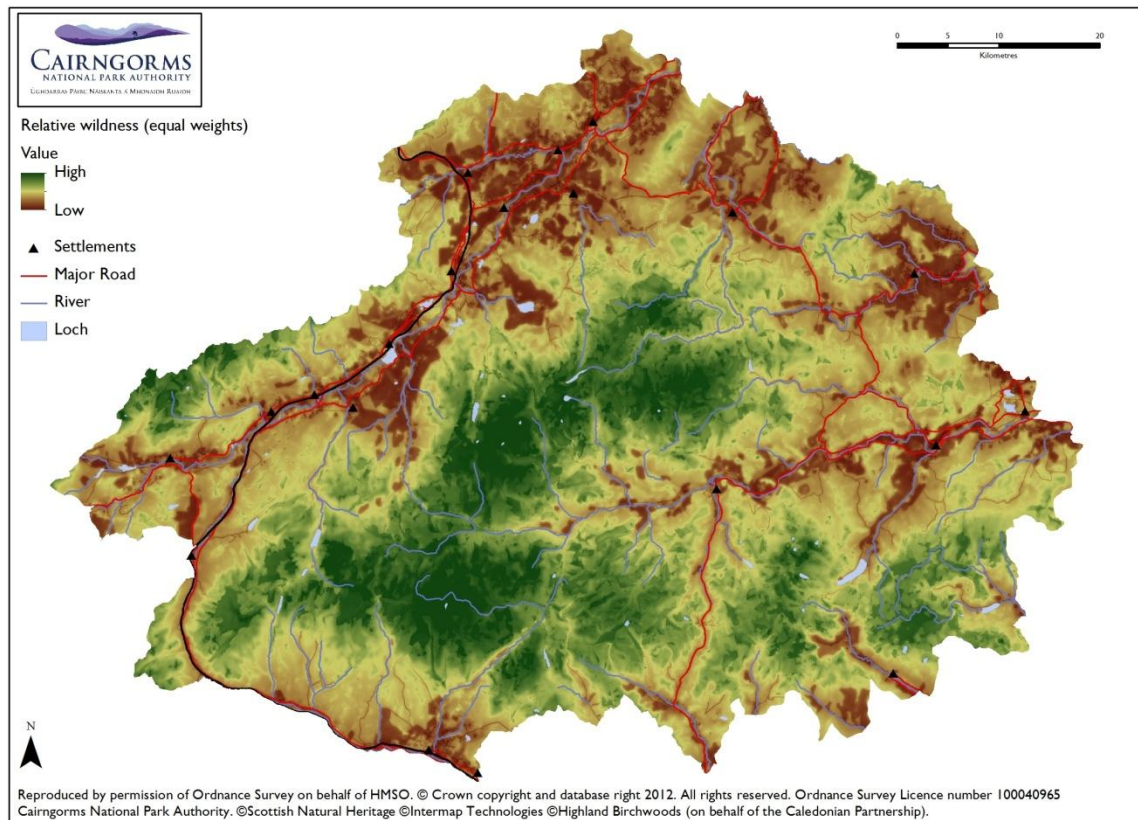
Notes:

1. There are a total of 78 Estates in the Cairngorms National Park with a land of 500 hectares or more and which are used to calculate these figures.

Source: www.scottishlandandestates.co.uk

Indicator ref:	CNPPPI_10
Indicator:	Qualities of Wildness in the Cairngorms National Park
Last update:	2010
Next update:	Expected 2015
Source:	Cairngorms National Park Authority

This indicator is intended to show change in the area of land in the Cairngorms National Park that is characterised as high or medium wildness. The baseline was established in 2010 and an update is expected in 2015.



Notes:

- I. The wildness map shows the relative wildness across the Cairngorms National Park as recorded in 2010. It is a combination of four key attributes that have each been mapped individually. They are perceived naturalness, ruggedness of terrain, remoteness and the lack of modern man-made artefacts.

Source: www.cairngorms.co.uk

Indicator ref:	CNPPPI_11
Indicator:	Conservation Area Improvement projects
Last updated:	2013
Next update:	Expected 2014
Source:	Cairngorms National Park Authority

This indicator will show the number of Conservation Area (in towns) Improvement projects in the Cairngorms National Park.

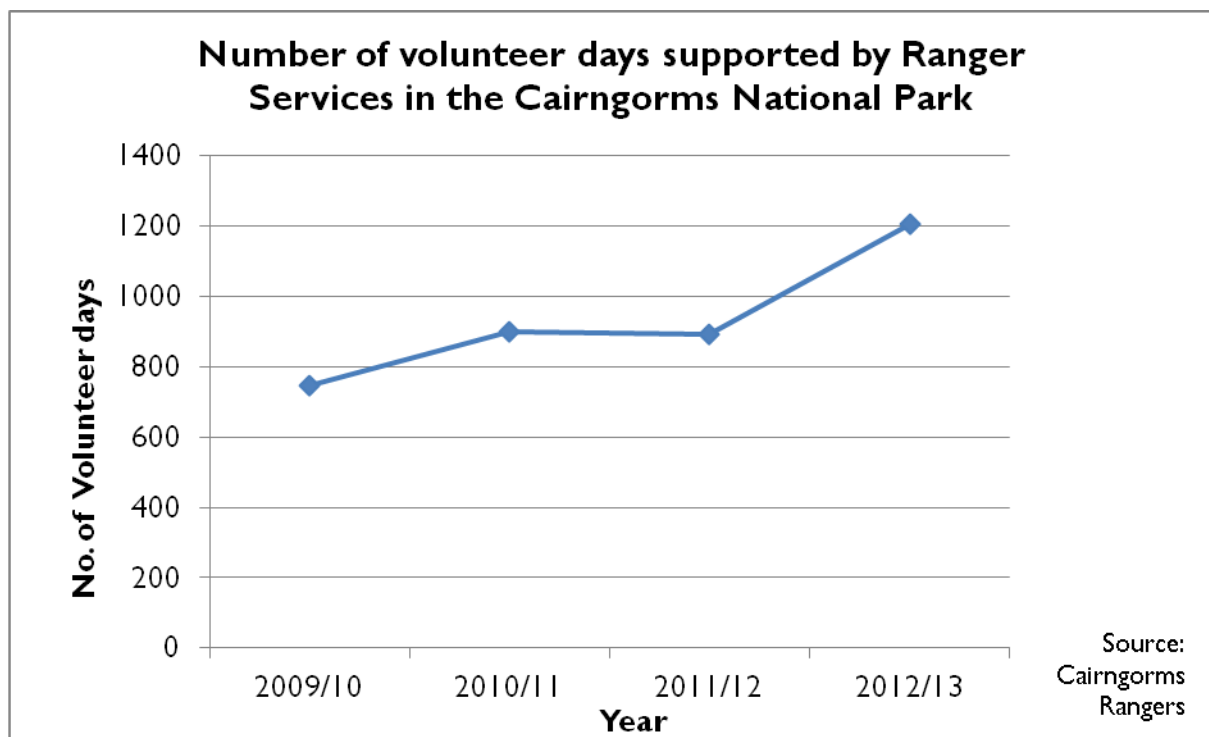
Comments:

1. To date one conservation area improvement project has taken in place, in Blair Atholl
2. The target is to achieve improvement projects in all conservation areas in the Cairngorms National Park. Work is programmed to begin in 2014.

Source: www.cairngorms.co.uk

Indicator ref:	CNPPPI_12
Indicator:	Volunteer Days supported by Ranger Services in the Cairngorms National Park
Last update:	August 2013
Next update:	Expected July 2014
Source:	Cairngorms Rangers

This indicator estimates the number of volunteer days per year spent caring for the Cairngorms National Park.



	2009/10	2010/11	2011/12	2012/13
Number of volunteer days supported by Rangers in the Cairngorms National Park	745.5	901	892.5	1207

Notes:

I. The data comes from 8 Ranger Services:

- Highland Council
- Angus Council
- Atholl Estates (from 2010/11)*
- Rothiemurchus Estate
- Explore Abernethy
- Glenlivet Estate
- Glen Tanar Estate
- Balmoral Estate
- Aberdeenshire Council (from 2012/13)

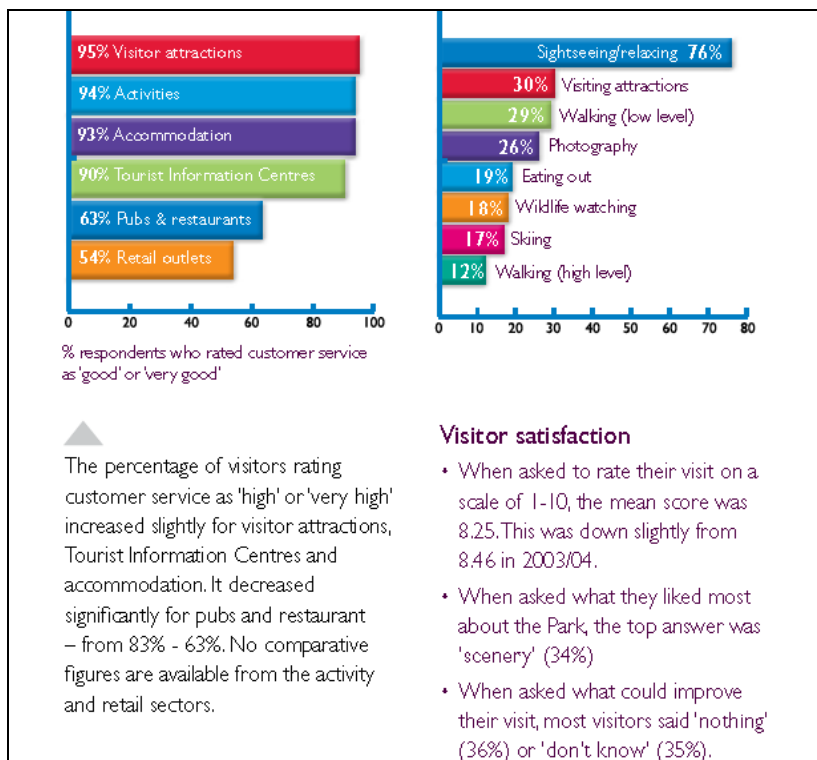
Source: www.cairngorms.co.uk

Indicator ref:	CNPPPI_13
Indicator:	The expectations of visitors are met or exceeded
Last update:	March 2013
Next update:	Expected 2015
Sources:	Cairngorms National Park Authority & Scottish Natural Heritage

This indicator is intended to reflect visitor satisfaction with the Cairngorms National Park. It is based on the Cairngorms Visitor Survey, due to be repeated in 2014/15.

Notes:

1. The five yearly Cairngorms National Park visitor survey will be repeated in 2014/15.
2. Scotland's People and Nature Survey, commissioned by Scottish Natural Heritage, will be undertaken in 2013/14 and repeated every third year. This will assess people's perceptions of the National Park and results will be referenced here when available.



Extract from Summary of 2009/10 Cairngorms Visitor Survey

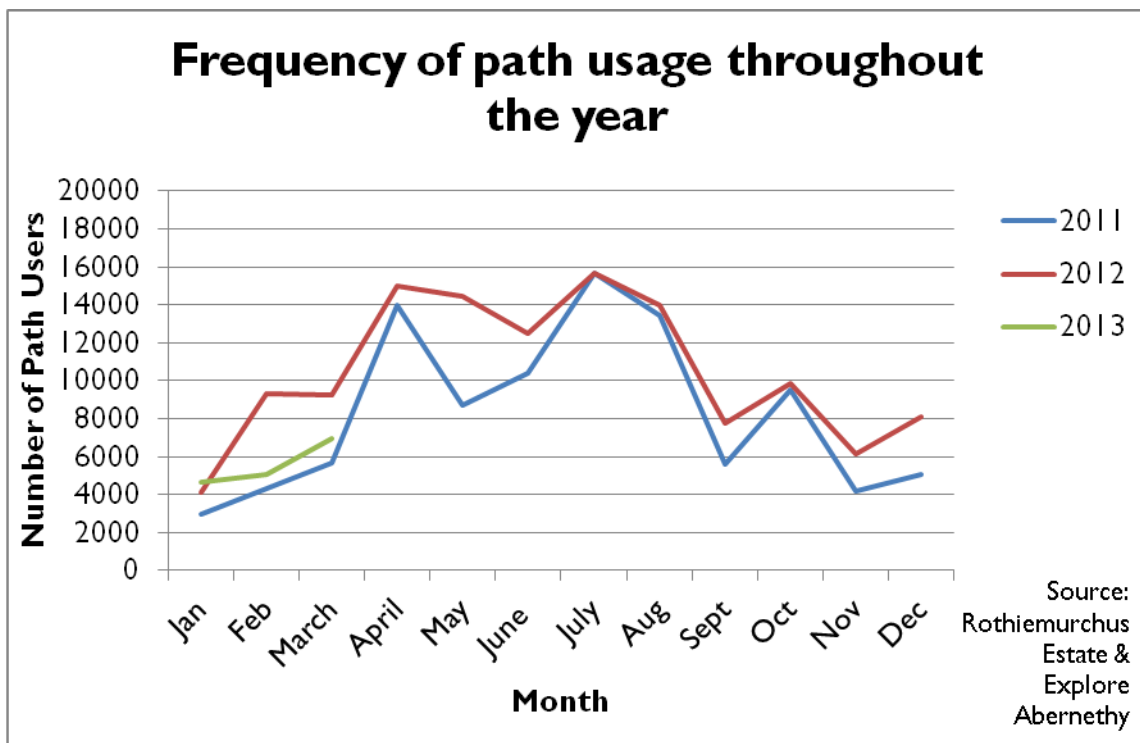
Sources:

Cairngorms National Park Authority Visitor Surveys 2003-04 and 2010-2011. Available from: www.cairngorms.co.uk/park-authority/national-park-plan/about-the-plan/priorities-for-action/making-tourism-and-business-more-sustainable

SNH Customer Survey – The Scottish Public, The SNH Scottish Nature Omnibus Winter 2011-12 (March 2012) Available from www.snh.gov.uk

Indicator ref:	CNPPPI_14
Indicator:	The number of people using promoted Core Paths in the Cairngorms National Park
Last update:	August 2013
Next update:	January 2014
Sources:	Explore Abernethy & Rothiemurchus Estate

This indicator used people counter records from promoted core paths the number of to give an indication of path use throughout the year. It currently uses data from 2 people counters on the Old Logging Way at Rothiemurchus and the Riverside Path at Nethybridge. Additional people counter data is being sourced for a wider range of paths for future years.



	Total Users			
Month	2010	2011	2012	2013
Jan	1400	2981	4090	4623
Feb	1238	4287	9285	5089
March	1405	5646	9236	6924
April	5927	13962	14976	
May	3166	8692	14450	
June	3633	10381	12527	
July	5827	15675	15694	
Aug	12309	13473	13978	
Sept	6720	5578	7761	
Oct	9299	9527 ^a	9854 ^b	
Nov	3009	4200	6169	
Dec	3836	5042	8092	
Totals	57769	99444	126112	

Notes to accompany Chart and Table

9527^a: due to an anomaly in the figures for the path usage at the Riverside Path in October 2011, we have estimated the figure by averaging the data on the previous years (2007 to 2010) for October

9854^b: the people counter at the Riverside Path broke down and needed to be replaced therefore we have estimated the figure by averaging the previous year's totals.

Comments:

- I. The data is from people counters on the Riverside Path, Nethybridge and the Old Logging Way, Rothiemurchus Estate. We hope to use additional people counter data from the Deeside Way in future years.

Sources: www.rothiemurchus.net
www.exploreabernethy.co.uk