



## Agenda item 9

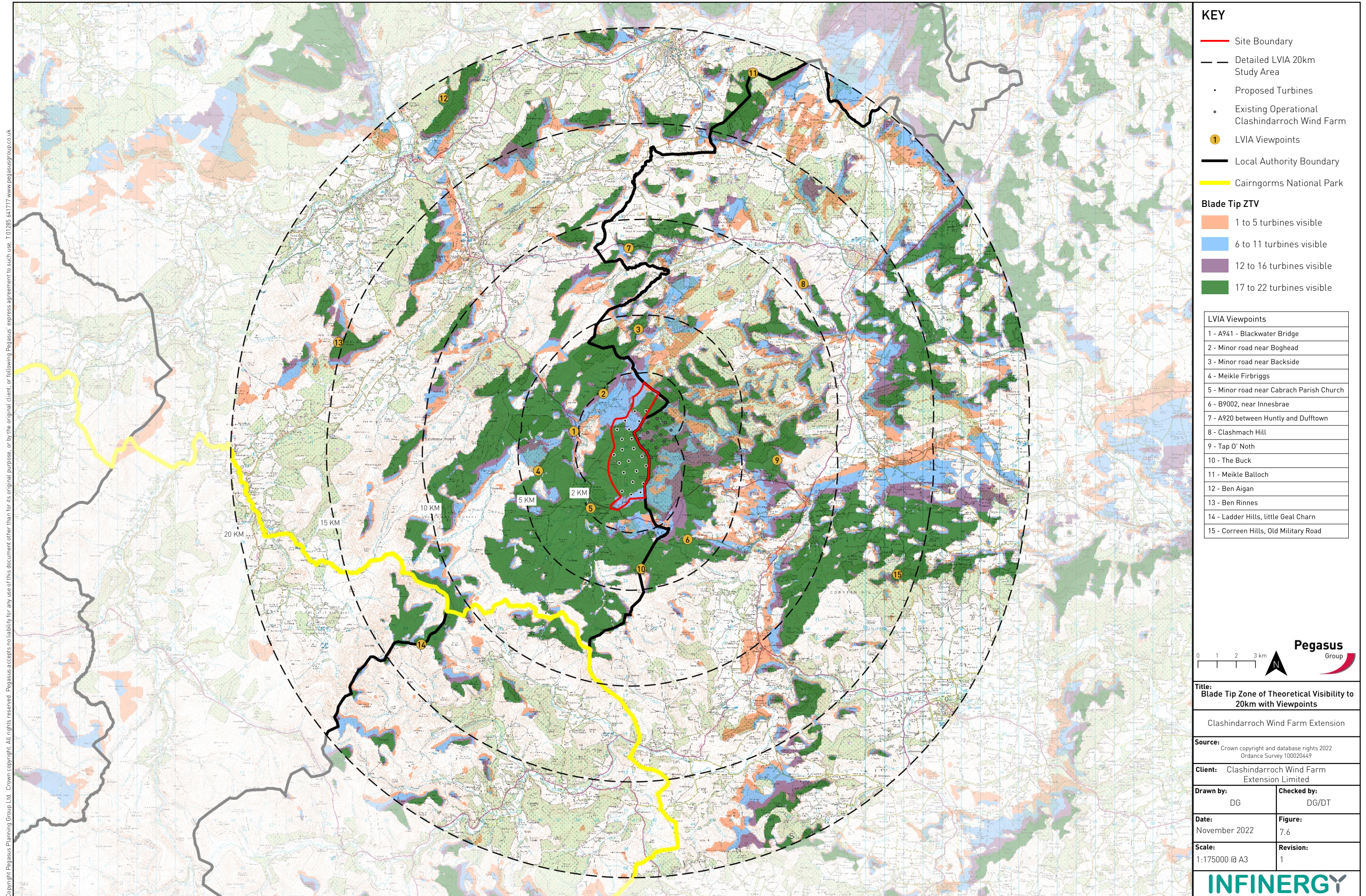
### Appendix 1

#### Clashindarroch wind farm extension

2023/0023/PAC

Theoretical visibility to 20km  
with viewpoints

Figure 7.6 - Blade Tip Zone of Theoretical Visibility to 20km with Viewpoints



**KEY**

- Site Boundary
- Detailed LVIA 20km Study Area
- Proposed Turbines
- Existing Operational Clashindarroch Wind Farm
- LVIA Viewpoints
- Local Authority Boundary
- Cairngorms National Park

**Blade Tip ZTV**

- 1 to 5 turbines visible
- 6 to 11 turbines visible
- 12 to 16 turbines visible
- 17 to 22 turbines visible

**LVIA Viewpoints**

1 - A941 - Blackwater Bridge
2 - Minor road near Boghead
3 - Minor road near Backside
4 - Meikle Firbriggs
5 - Minor road near Cabrach Parish Church
6 - B9002, near Innesbrae
7 - A920 between Huntly and Dufftown
8 - Clashmach Hill
9 - Tap O' Noth
10 - The Buck
11 - Meikle Balloch
12 - Ben Aigan
13 - Ben Rinnes
14 - Ladder Hills, little Geal Charn
15 - Correen Hills, Old Military Road

**Pegasus**  
Group

**Title:**  
Blade Tip Zone of Theoretical Visibility to 20km with Viewpoints

Clashindarroch Wind Farm Extension

**Source:**  
Crown copyright and database rights 2022  
Ordnance Survey 100020449

**Client:** Clashindarroch Wind Farm Extension Limited

<b>Drawn by:</b> DG	<b>Checked by:</b> DG/DT
------------------------	-----------------------------

<b>Date:</b> November 2022	<b>Figure:</b> 7.6
-------------------------------	-----------------------

<b>Scale:</b> 1:175000 @ A3	<b>Revision:</b> 1
--------------------------------	-----------------------

Copyright Pegasus Planning Group Ltd. Crown copyright. All rights reserved. Pegasus accepts no liability for any use of this document other than for its original purpose, or by the original client, or following Pegasus' express agreement to such use. T 01285 641717 www.pegasusgroup.co.uk