

Nethy Bridge

Proposals

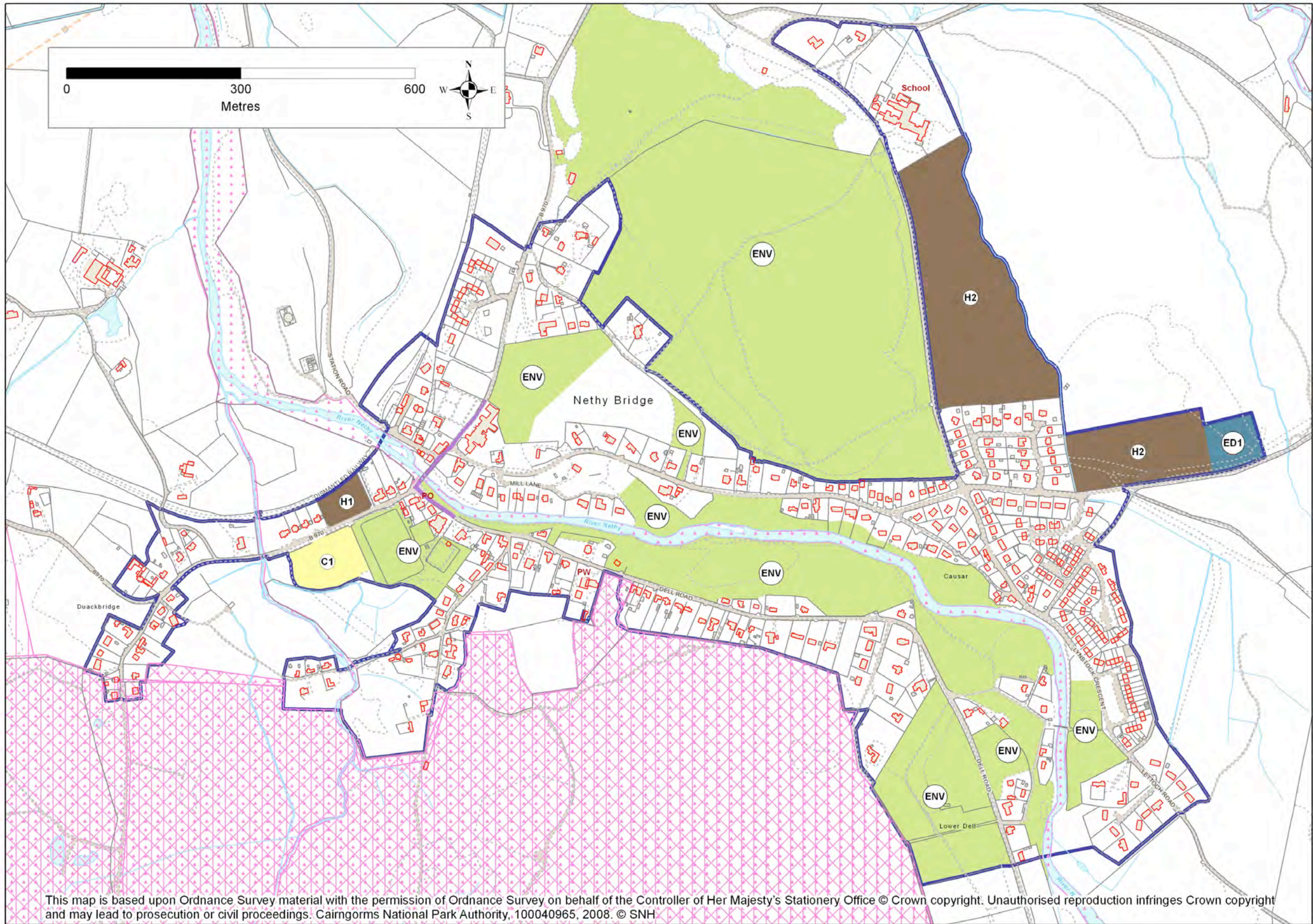
NB/H1: This 0.47Ha site opposite the football pitch has detailed planning consent for 13 amenity dwellings.

NB/H2: These two sites have outline consent for a total of 40 dwellings. Development on these sites will retain enough woodland to allow for movement of species between areas of woodland to the sides of the sites, and retain the woodland setting of this part of the village.

NB/ED1: A .076Ha site adjacent to H2 is identified for business use. Any development of the site will need to take account of its site within the woodland and at an entry point to the village. Development on this site will retain enough woodland to allow for movement of species between areas of woodland to the sides of the sites, and to retain the woodland setting of this part of the village

NB/C1: This 1.09Ha site west of the playing fields which plays an important role in supporting the Abernethy Games is identified for community use and will be protected from development.

NB/Env: A number of open spaces within Nethy Bridge are identified as contributing to the setting of the village and will be protected from adverse development. Open space adjacent to the Mountview Hotel is also protected by means of a planning condition.



NethyBridge

Legend

-  Cairngorms National Park
-  Sites of Special Scientific Interest
-  Special Protection Areas
-  Special Area of Conservation
-  Ramsar Convention Site
-  National Nature Reserve
-  Gardens & Designed Landscapes
-  National Scenic Area
-  Conservation Area
-  Settlement Boundary
-  Indicative Settlement Boundary

Settlement Zone Type

-  Community
-  Economic Development
-  Housing
-  Environment
-  Village Centre