



Cairngorms National Park Core Paths Plan

Consultation and Engagement Process - Stage 1

Community Engagement & Results – Upper Badenoch & Strathspey

Introduction

The core paths plan process targeted four main interest groups to engage with, these included; communities, land managers, people who recreate in the National Park (visitors and residents including businesses, national organisations and clubs e.g. Ramblers, Scottish Canoe Association, Cairngorm Club etc.) and visitors to the National Park (those who may not specifically come to the Park to recreate but may do so whilst they are here). The following report details how the Cairngorms National Park Authority (CNPA) engaged with the public for the Upper Badenoch & Strathspey area, the people who participated in the engagement process and the feedback and results that they provided.

Engaging with the public for the Upper Badenoch & Strathspey area

The engagement period ran from 1st September to 30th November 2006. Questionnaires for the Upper Badenoch & Strathspey area were made available on the CNPA website, through contacting the CNPA directly and at drop-in events across the National Park. In Upper Badenoch & Strathspey, community drop-in events were run in Newtonmore and Laggan to enable people to find out more about core paths planning and to advise the CNPA of the routes, paths and areas that are important to them and why. Feedback reports for these settlements are also available. Questionnaires were also made

available for settlements within Upper Badenoch & Strathspey, including Newtonmore, Laggan and Dalwhinnie.

Participants in the Engagement Process

Throughout the 3 month period a total of 10 questionnaires were completed for the Upper Badenoch & Strathspey area. Within the area, a total of 43 questionnaires were completed for the settlements of Newtonmore, Laggan and Dalwhinnie. To help the CNPA gauge whether or not the process successfully engaged with a wide enough cross section of people, the questionnaires asked people to provide information on their gender, age group and where they live. The results are shown below.

Participants by Gender

Male	50%	Female	50%
------	-----	--------	-----

Participants by Age Group

Under 16	0%	16 - 24	0%	25 - 44	13%	45 - 64	88%	65 - 74	0%	Over 75	0%
----------	----	---------	----	---------	-----	---------	-----	---------	----	---------	----

Where people came from

% of people from each place who completed questionnaires			
Upper Badenoch & Strathspey	100%	Elsewhere	0%

Results of the Engagement Process

Map Results

People were given the opportunity to provide their views on the Upper Badenoch & Strathspey area via questionnaires and at events. People were asked to identify the paths that are important to them on a map in the questionnaire, they were also asked to identify any new routes or areas that they would like to have easier access to and were encouraged to make comments. Participants at events throughout the National Park were asked to annotate large maps highlighting their popular routes in detail and also adding comments. Where someone

made a comment on the maps this has been listed in a table shown in Annex 1. The routes identified by people for the Upper Badenoch & Strathspey area are shown in Annex 2. Each comment has a number attributed to it to enable cross-referencing with the map in Annex 2 (only where the comment is specific to a geographic area). The routes shown in a solid line are those which people identified as being important to them. The dashed lines are proposed routes that people identified.

Questionnaire Results

A total of 10 questionnaires were received for the Upper Badenoch & Strathspey area. The responses to each of the questions are outlined below.

What outdoor activities do you currently do in and around Upper Badenoch & Strathspey?

Activity	% of respondents who undertake the activity
Low level walking	80%
Dog walking	30%
Hill walking	80%
Running	40%
Getting about in a wheelchair	0%
Walking with a pushchair	0%
Cycling on-road	80%
Cycling off-road	70%
Horse-riding	10%
Watersports	20%
Winter sports	30%
None	0%
Other*	10%

*Other activities identified were 'Photography, Bird Watching'.

Why do you do these activities?

Reason	% of respondents who identified the reason
To keep fit/healthy	80%
Enjoying the Countryside	80%
Travel to work/school	10%
Getting about	50%
Other*	20%

*Other reasons identified were 'Birdwatching' and 'fun'.

What activities would you like to see better opportunities for in and around the area?

Activity	% of respondents who identified the activity
Low level walking	30%
Dog walking	0%
Hill walking	20%
Running	10%
Getting about in a wheelchair	0%
Walking with a pushchair	10%
Cycling on-road	20%
Cycling off-road	30%
Horse-riding	20%
Watersports	0%
Winter sports	10%
None	0%
Other	0%

Would better opportunities for these activities encourage you to;

Reason	% of respondents who identified each activity
Walk to work/school	10%

Cycle to work/school	20%
Try new activities	10%
Get fit	40%
Get outdoors more	40%
Other	0%

Summary

During the public engagement process it was found that the area is popular for a wide range of activities and there are a number of issues relating to path maintenance and access. The most popular paths were Wade's Road and Glen Tromie to the Gaick Forest (identified by 40% of respondents). Other popular routes included Glen Banchor, Loch Gynack and Strathmashie.

All activities proved popular in the area although low-level walking, hill-walking and cycling on-road were by far the most popular, closely followed by cycling off-road with most people doing activities to keep fit and healthy and to enjoy the countryside and very few for getting to work or to school. There was some demand for better cycling opportunities.

Reflections

There was a reasonable response for the Upper Badenoch & Strathspey area although it came from a fairly limited age group and there were no responses from visitors. A lot of information was compiled on maps at many of the events both in Upper Badenoch & Strathspey and at events throughout the National Park. In particular there was a good response from people who attended the outdoor activities workshops that were held in Ballater and Aviemore.

Next Steps

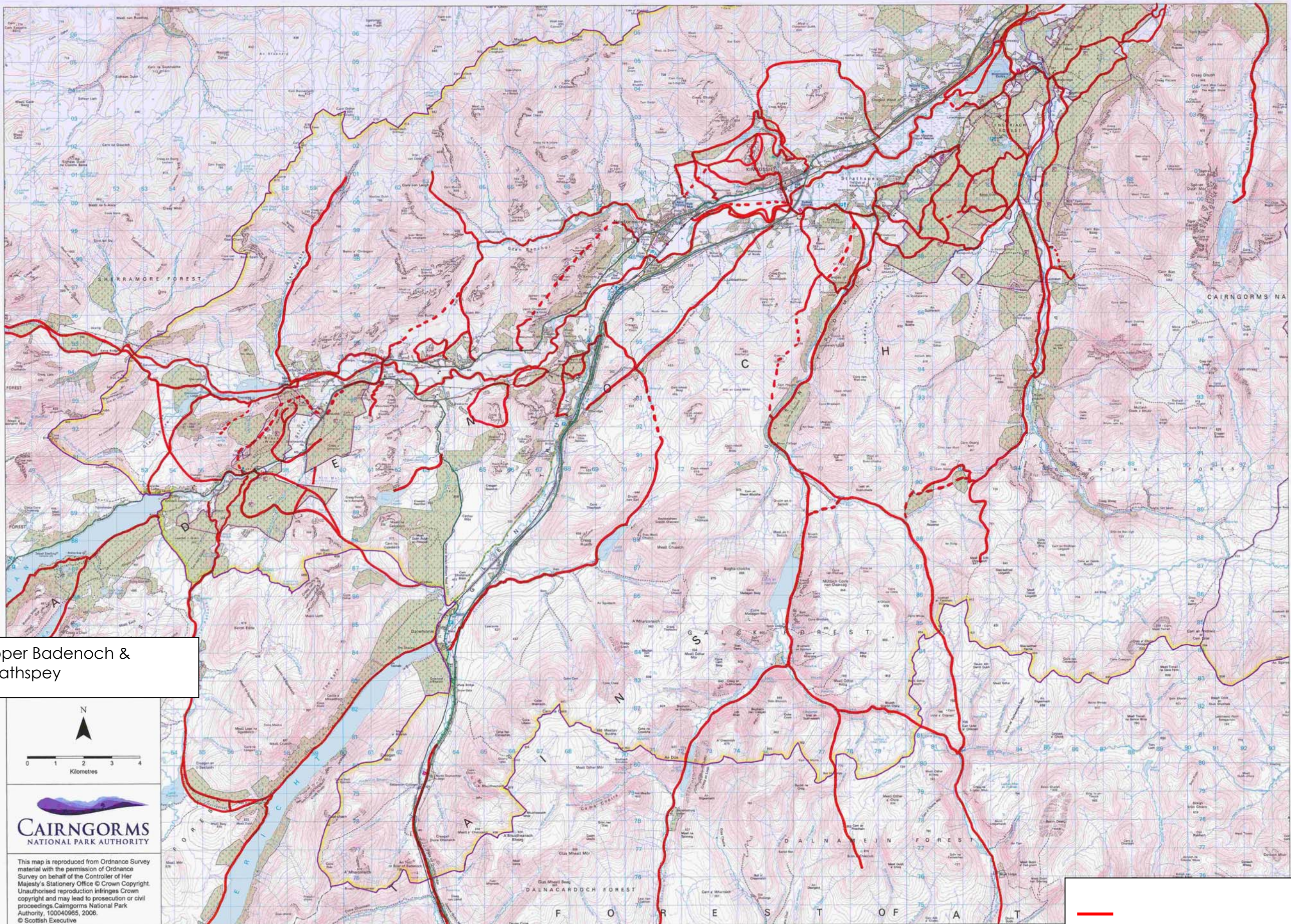
The issues raised and the information gathered throughout the process will be used to inform the development of selection criteria for core paths. The selection criteria will then be used to select core paths for the Cairngorms National Park. The selection criteria and maps of the selected paths will be drawn up into an Interim Draft Core Paths Plan which will be completed by the end of March 2007. This Plan will then be made available for the public to make comment.

Cairngorms National Park Authority
1 March 2007

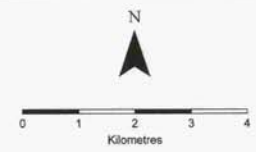
sandramiddleton@cairngorms.co.uk

Annex 1 - Comments received on maps at events and in the questionnaires

Where the comment relates to a geographic area on the map the number of the comment has been written on to the map in Annex 2.	
No.	Comment (<i>as written by respondent</i>)
1	Kingussie – N'more along the riverside
2	Orienteer in Strathmashie area
3	Walk & run on paths around Kingussie & Insh Marshes. Also Wildcat Trail.
4	Access to R. Spey difficult stile
5	Safe off-road route between Newtonmore & Laggan
6	Path past Loch Spey through to Roy Bridge – section often item to be re routed over higher dryer ground
7	Routes from Phones Lodge to Creagan A'Chon does not exit on the grounds
8	Used by visitors and local dog walkers
9	Right of Way poorly marked
10	Poor path link to Wolftrax
11	Local and Visitor route
12	Section (boggy) here needs work Creag Duibe
13	Bridges needed
14	Ref 57 88 Route destroyed/confused by forestry walk
15	High fence crossing



Upper Badenoch & Strathspey



This map is reproduced from Ordnance Survey material with the permission of Ordnance Survey on behalf of the Controller of Her Majesty's Stationery Office © Crown Copyright. Unauthorised reproduction infringes Crown copyright and may lead to prosecution or civil proceedings. Cairngorms National Park Authority, 100040965, 2006. © Scottish Executive

