

Laggan

During the public engagement process it was found that there is strong support for the Wolftrax facility and also an off-road path linking the facility and the communities of Laggan and Balgowan.

The most popular paths identified were two off-road routes to Gorstan (66% of respondents) and to Balgowan (44% of respondents). Other popular routes were a route along the levy towards Spey Dam (22% of respondents) and the Wades Road and ford at Dalchully (22% of respondents).

Most activities were reasonably popular in the area, low level walking was by far the most popular activity followed by dog walking and hill walking. Most people doing activities did so to enjoy the countryside and also to keep fit and healthy no one did so to get to work or school. There was a reasonably high demand for better opportunities for cycling on-road and a comparatively high demand for better opportunities for wheelchairs and pushchairs.

LAGGAN – Proposed Core Paths	
Path Ref. No.	Path Description
UBS16	Laggan to Balgowan (off-road route)
UBS17	Gergask link
UBS18	Laggan - Gorstan (off-road route)
UBS19	Gorstan – Wolftrax (off-road route)
UBS20	Gorstan walk
LBS1	River Spey

Interim Draft
Core Paths Plan

Map 24
LAGGAN

Upper Badenoch
and Strathspey

Proposed Core Paths Network
- for Consultation

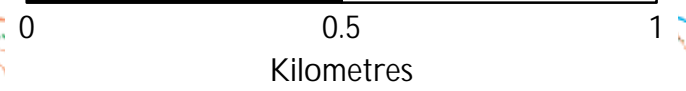
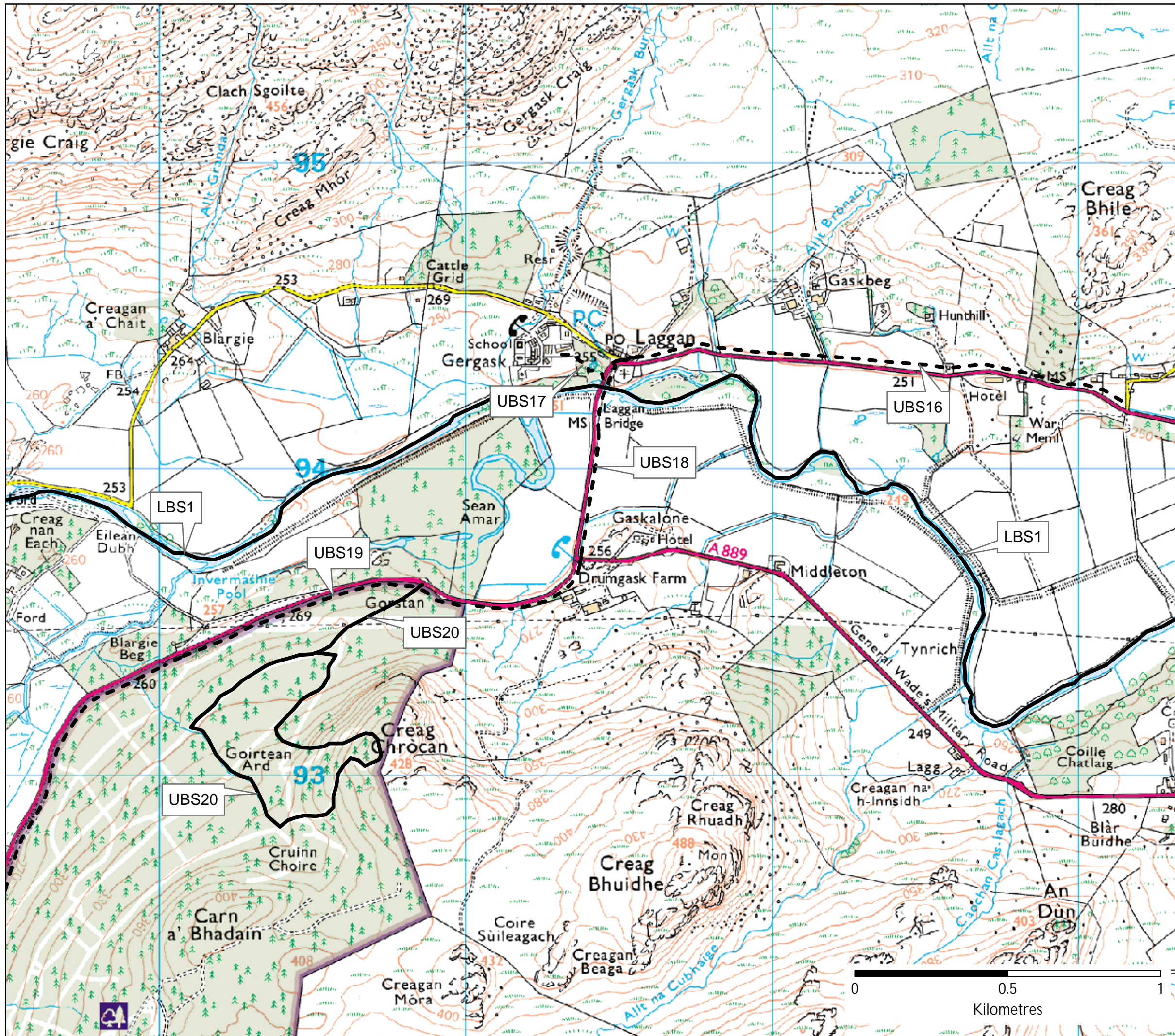
Map Legend

Proposed core path

— Exists on ground

- - - Proposed new path

UDE1 Path Reference Number



This map is based upon Ordnance Survey material with the permission of Ordnance Survey on behalf of the Controller of Her Majesty's Stationery Office © Crown copyright. Unauthorised reproduction infringes Crown copyright and may lead to prosecution or civil proceedings. Cairngorms National Park Authority, 100040965, 2007.