

# 7. NATURAL AND CULTURAL HERITAGE MAPS

## Map A - International and National Nature Conservation Sites

### Legend

-  National Park Boundary
-  RAMSAR
-  Natura 2000 Sites
-  Special Area of Conservation
-  Special Protection Area
-  National Nature Conservation Sites
-  National Nature Reserve
-  Site of Special Scientific Interest
-  Geological Conservation Review Site



This map is based upon Ordnance Survey material with the permission of Ordnance Survey on behalf of the Controller of Her Majesty's Stationery Office (c) Crown copyright. Unauthorised reproduction infringes Crown copyright and may lead to prosecution or civil proceedings. Loch Lomond and The Trossachs NPA 100031883 2008. SSSI, NNR, GCR, SAC, SPA & Ramsar data: (c) Scottish Natural Heritage 2008









The representation of features or boundaries in which LLTNP/A or others have an interest does not necessarily imply their true positions. For further information please contact the appropriate authority.

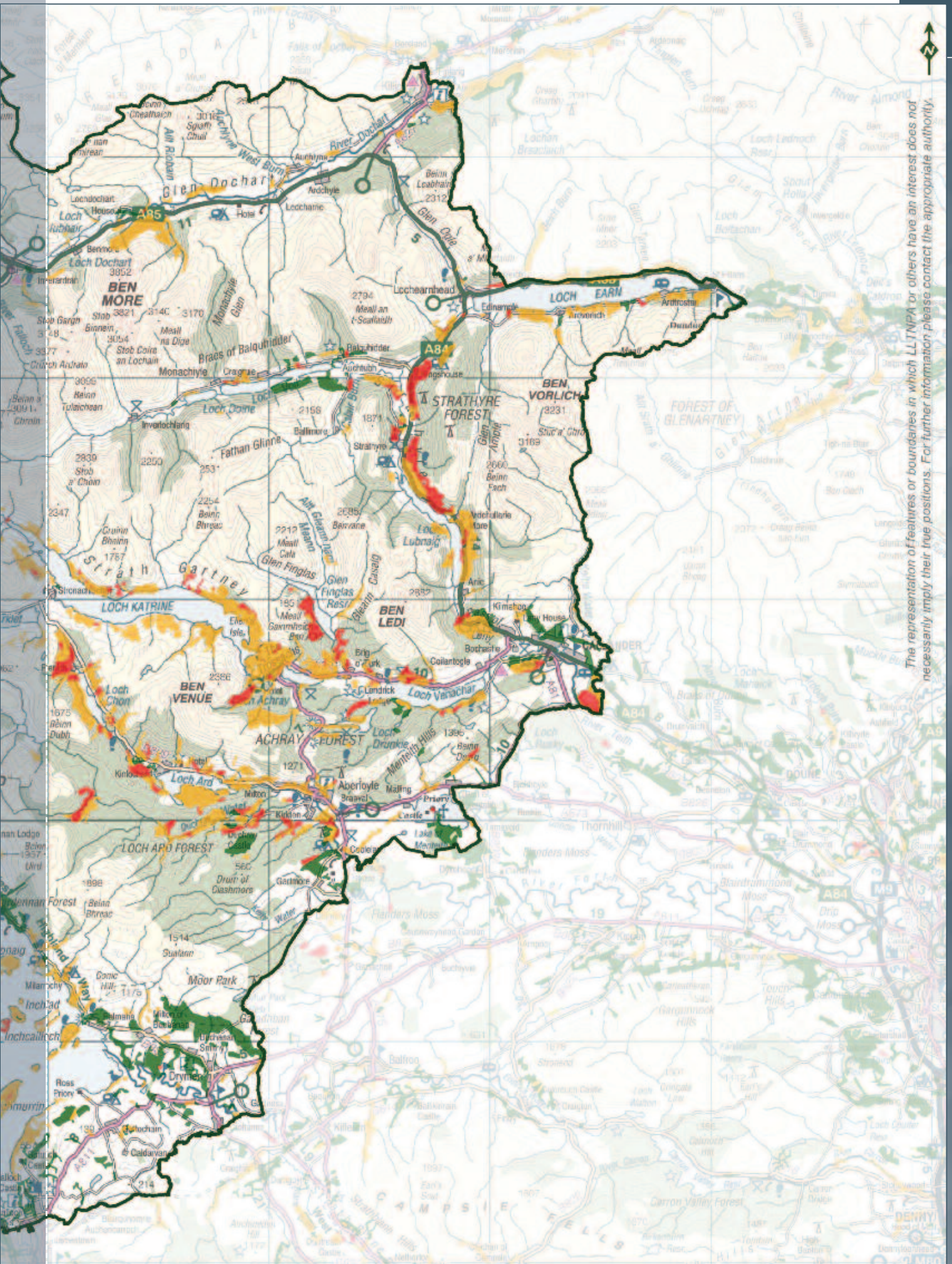
# Map B - Ancient Woodland Inventory

## Legend

-  National Park Boundary
- Ancient Woodland Inventory**
-  Ancient (of semi-natural origin)
-  Long-established (of plantation origin)
-  Other (from General Roy's survey)

This map is based upon Ordnance Survey material with the permission of Ordnance Survey on behalf of the Controller of Her Majesty's Stationery Office (c) Crown copyright. Unauthorised reproduction infringes Crown copyright and may lead to prosecution or civil proceedings. Lochnagar and The Trossachs NPA 100031883 2008.  
 Data source: (c) Scottish Natural Heritage 2008









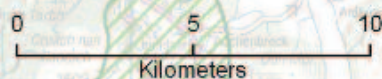
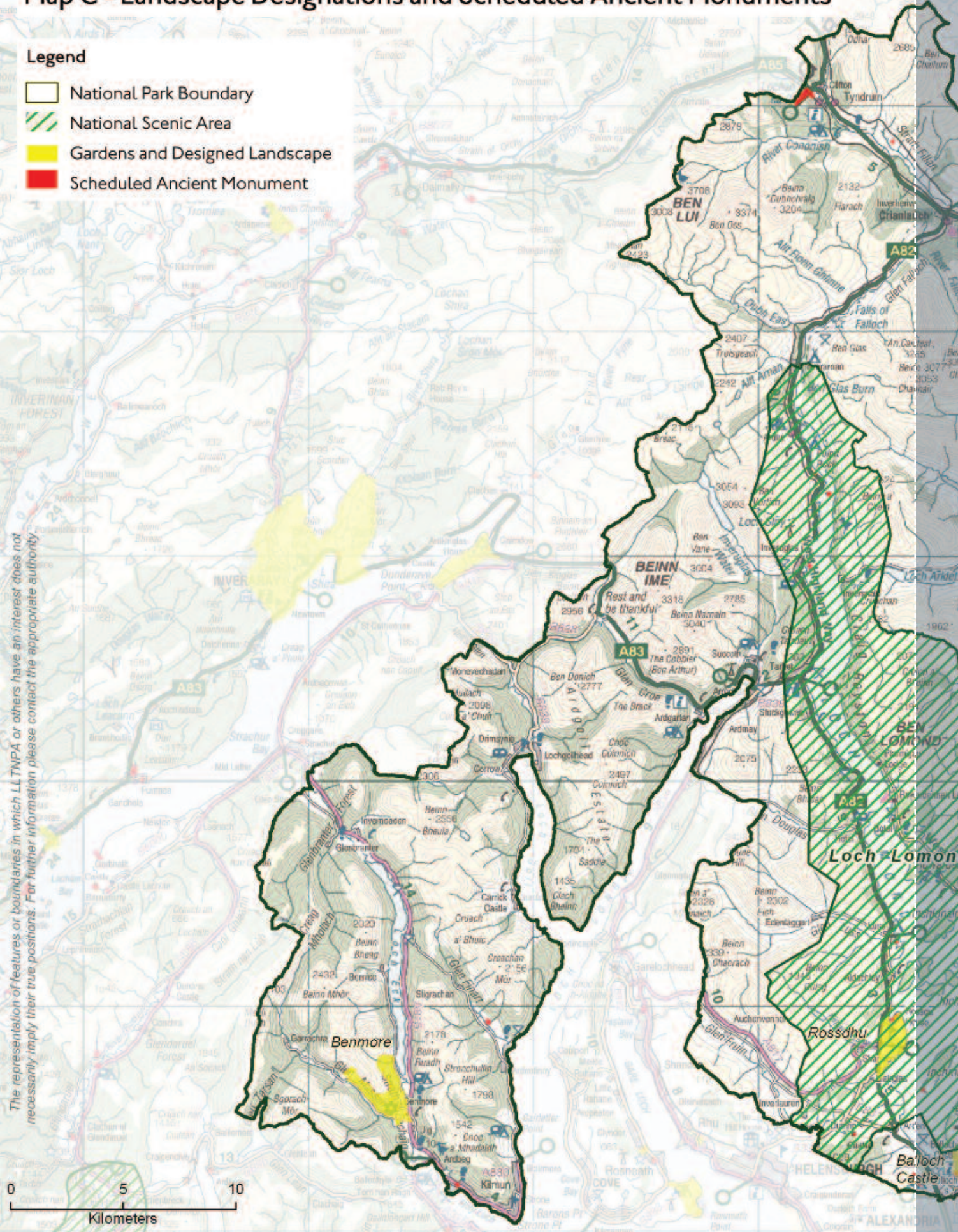
The representation of features or boundaries in which LLYNPA or others have an interest does not necessarily imply their true positions. For further information please contact the appropriate authority.

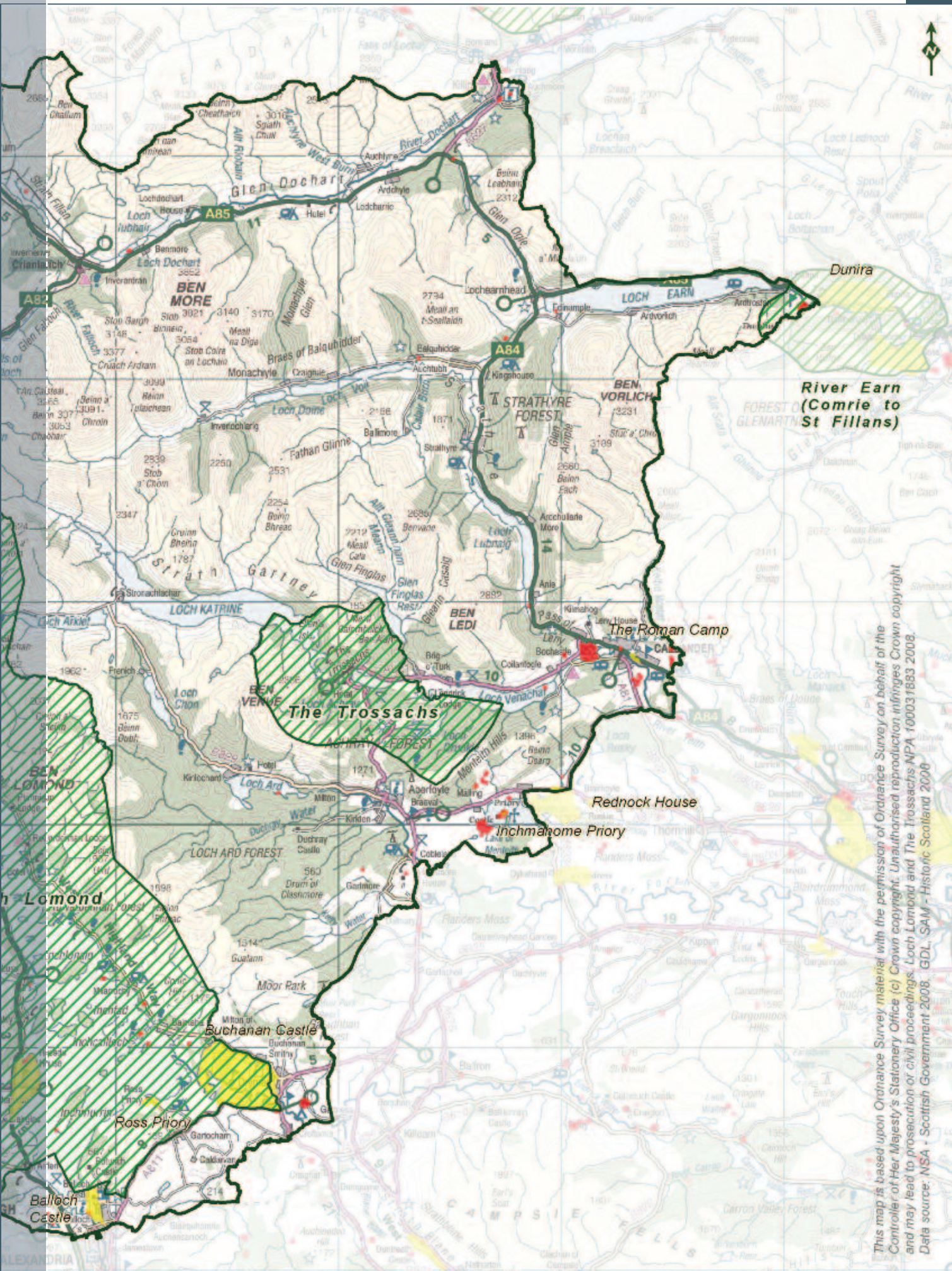
# Map C - Landscape Designations and Scheduled Ancient Monuments

## Legend

-  National Park Boundary
-  National Scenic Area
-  Gardens and Designed Landscape
-  Scheduled Ancient Monument

The representation of features or boundaries in which LI TNPA or others have an interest does not necessarily imply their true positions. For further information please contact the appropriate authority.





This map is based upon Ordnance Survey material with the permission of Ordnance Survey on behalf of the  
 Controller of Her Majesty's Stationery Office (c) Crown copyright. Unauthorised reproduction infringes Crown copyright  
 and may lead to prosecution or civil proceedings. Loch Lomond and The Trossachs MPA 100031883 2008.  
 Data source: NSA - Scottish Government 2008. GDL, SAM - Historic Scotland 2008