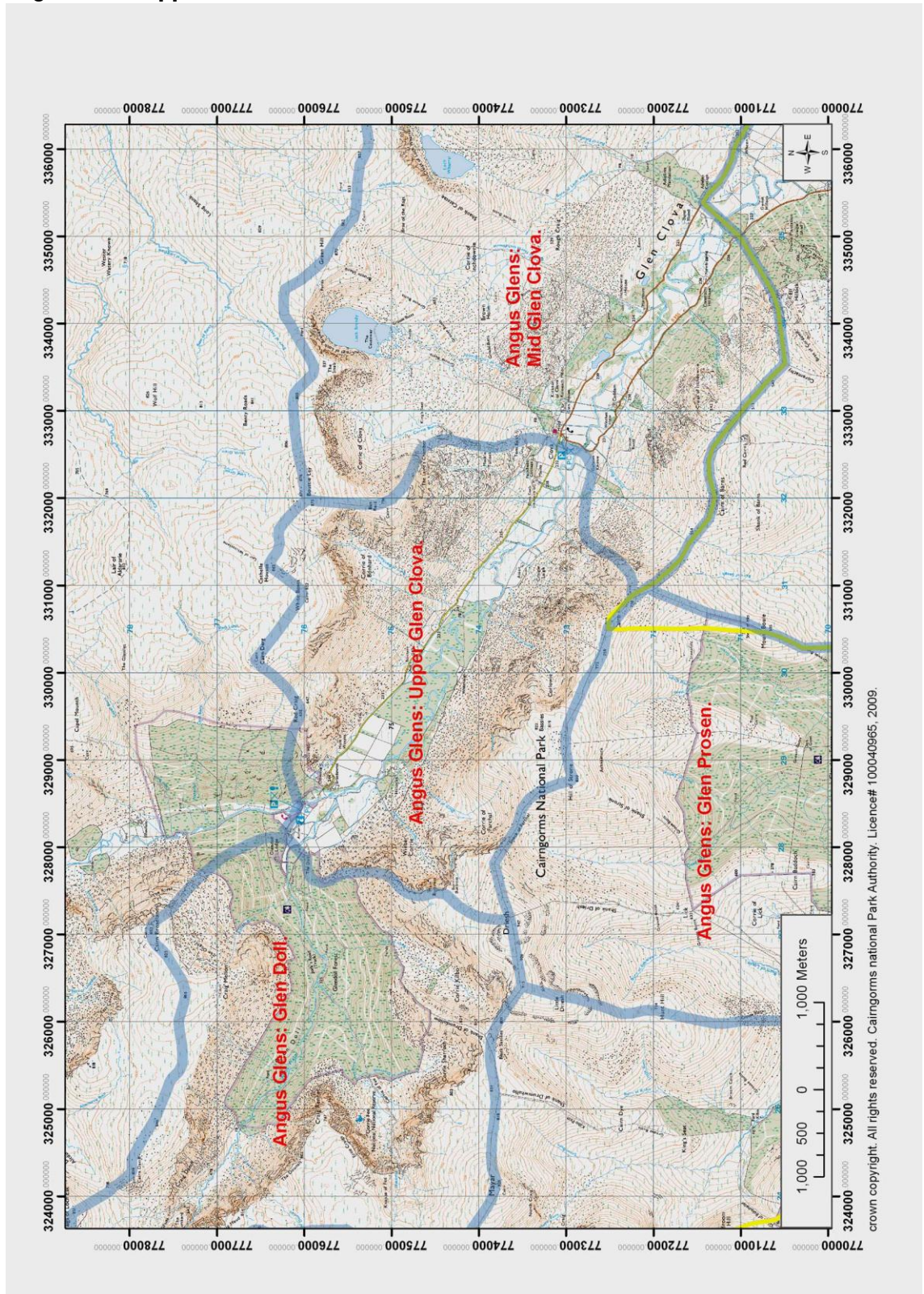


I.1 Angus Glens: Upper Glen Clova



1.1.1 *Landscape Character*

- The relatively level floodplain along the glen floor is flanked by evenly graded, steep slopes rising to craggy summits and corries
- The side slopes have been steepened and roughened by glaciers retreating south east which has resulted in a rim of extensive craggy outcrops along the upper slopes above long screes and huge, bouldery rock falls
- The glen floor has been worked flat by the River South Esk, which meanders across the flood plain
- The well drained side slopes dominated by grassland and some regenerating or remnant birch woodland
- Where still farmed, the flat land is fenced into broadly square shaped, late 18th/19th century improved fields, the boundaries supplemented by the occasional dyke especially along the roadside
- A large part of the glen floor is planted with an extensive commercial conifer forest which increases enclosure and limits views
- There is a pronounced settlement pattern as nearly all farmsteads, some of which are now redundant due to afforestation, are located at the edge of the glen floor, where there is a break in slope.
- Many of these late 18th/19th century farmsteads are on the sites of older pre-improvement farmsteads, the earlier field systems of small fields, remnant walls and ruined buildings having survived above the floodplain
- An additional cluster of buildings congregates at the end point of the tarmac road, including farms and a lodge house, as well as a ranger station and the car park. All the buildings sit back against the steep glen sides
- The single track road hugs the break in slope on the northern side of the glen, set against the foot of the steep slopes

1.1.2 *Landscape experience*

- The steep sided hills, emphasised by their height, create a very pronounced sense of enclosure
- The strongly linear alignment of the glen creates very focussed views along the glen floor, framed by the even gradient of the side slopes
- The woodland on the valley floor partially limits these views along the glen, and hides the level flood plain and settlement pattern

1.1.3 *Relationship to adjacent character areas*

This character area is inter-visible with Glen Doll and mid Glen Clova. Views to these adjacent character area are dramatised by the 'framing' effects of the steep side slopes when viewed from the road in this part of the glen, although they are sometimes obscured by forestry.

1.1.4 *Assessment of distinctiveness*

The 'linearity' of the glen is very pronounced, reinforced by the evenly graded side slopes, and relatively level ridgelines, creating long, well-framed views. The rock falls, which include huge boulders, are a dramatic feature. There is a strong, historic link between evenly spaced farmsteads and the break in slope.



Extensive woodland and grassland fields across the flood plain



The steep side slopes are frequently covered by extensive, dramatic bouldery rock falls