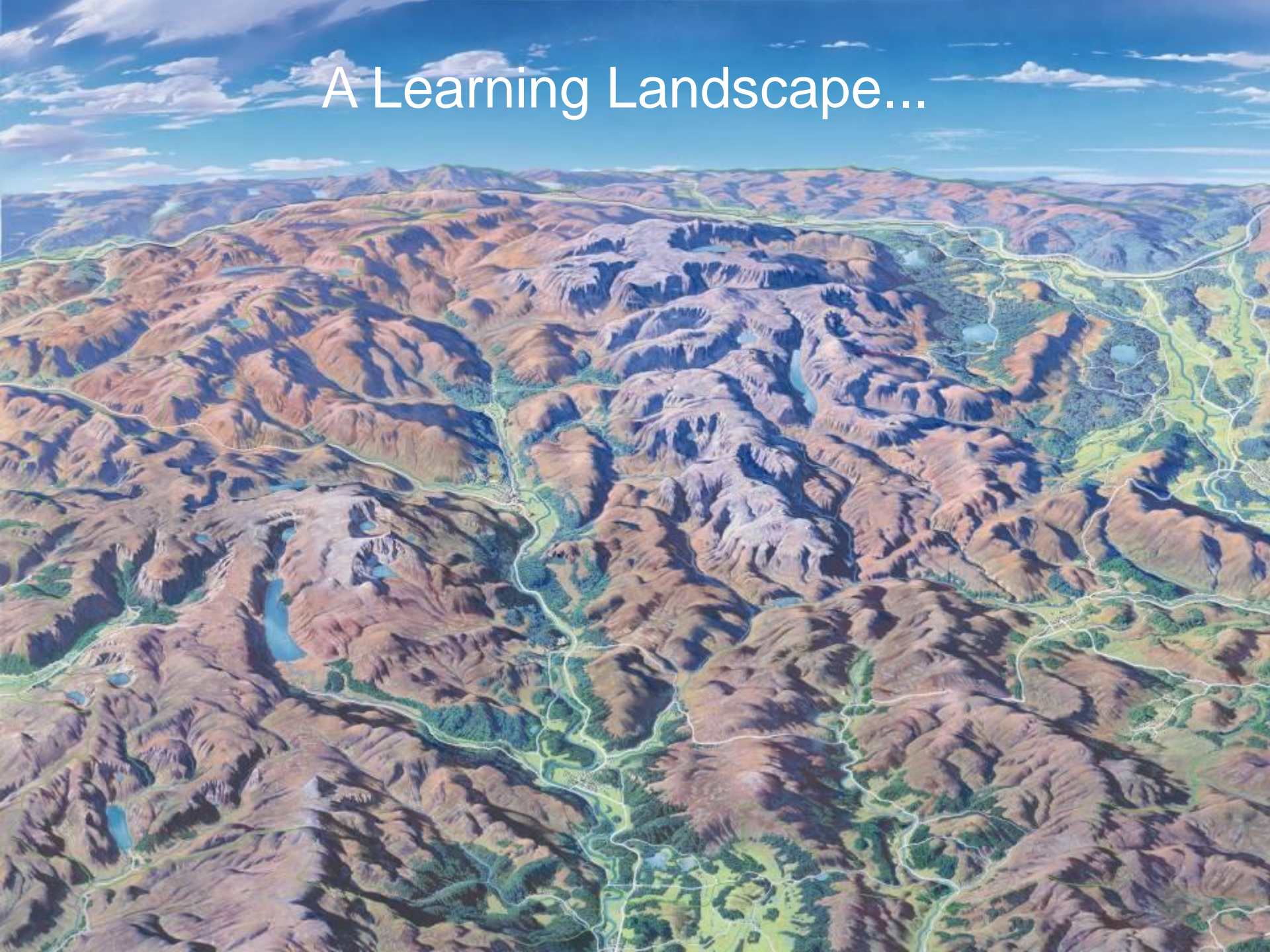


Cairngorms National Park

A Learning Landscape



A Learning Landscape...

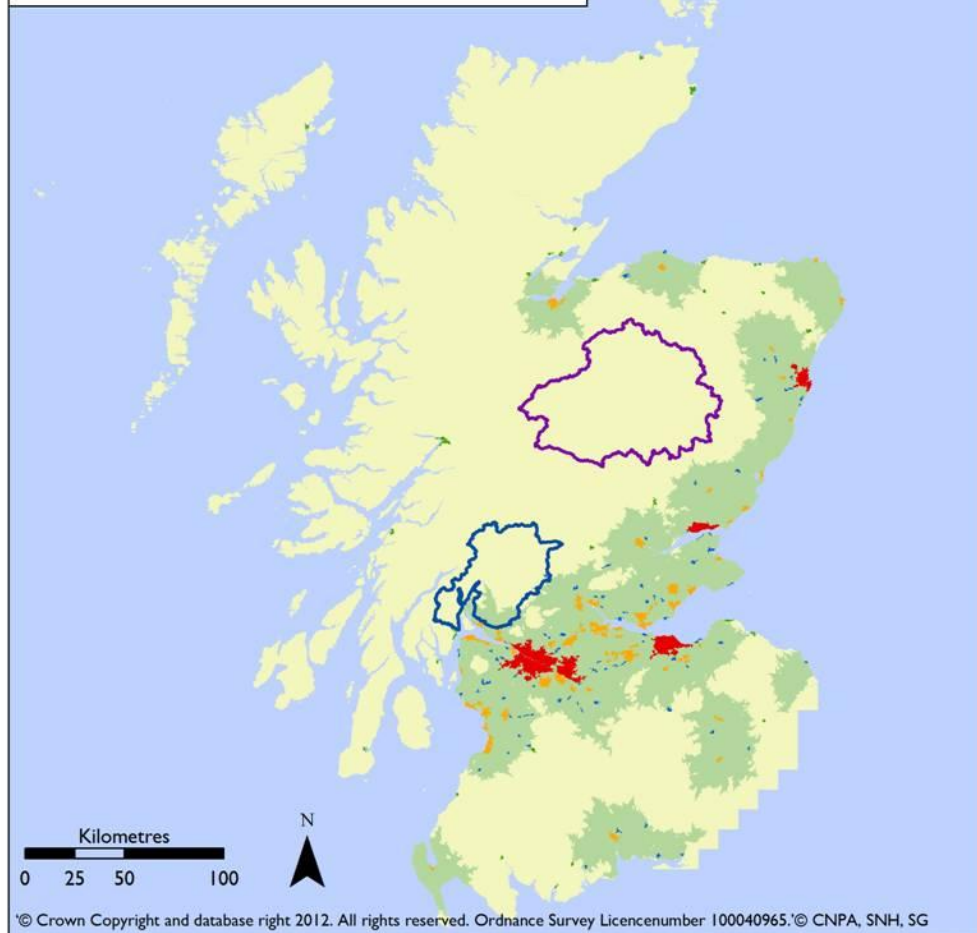


Scottish Government 6-Fold Urban Rural Classification

Classification

- 1 - Large Urban Areas (Popn. 25k+)
- 2 - Other Urban Areas (Popn. 10k to 125k)
- 3 - Accessible* Small Towns (Popn. 3k to 10k)
- 4 - Remote Small Towns (Popn. 3k to 10k)
- 5 - Accessible* Rural
- 6 - Remote Rural
- ⬮ Cairngorms National Park
- ⬮ Loch Lomond & Trossachs National Park

*Accessible is defined as those areas that are within 30 minute drive time from the centre of a town with a population of 10k or more





Cairngorms
NATIONAL PARK



- A special place for people and nature
- A sustainable economy supporting thriving businesses and communities
- People enjoying the Park through outstanding experiences

Research Strategy

- Promote the Park as a place for collaborative research
- Connect research across disciplines
- Connect research and management needs
- Facilitate knowledge exchange

Headline themes

- Cairngorms Nature
- Visitor Experience
- Rural Development
- Governance and Management

LTSER

LTER = Long Term Ecosystem Research

LTSER = Long Term Socio-Ecological Research

- Long term
- Landscape scale
- Inter-disciplinary



Overseen by LTER-Europe/ALTER-Net

LTSER Benefits

- Better evidence base to inform management
- More efficient pooling of effort and resources
- Better data sharing
- Effective connection into (inter)national research agendas

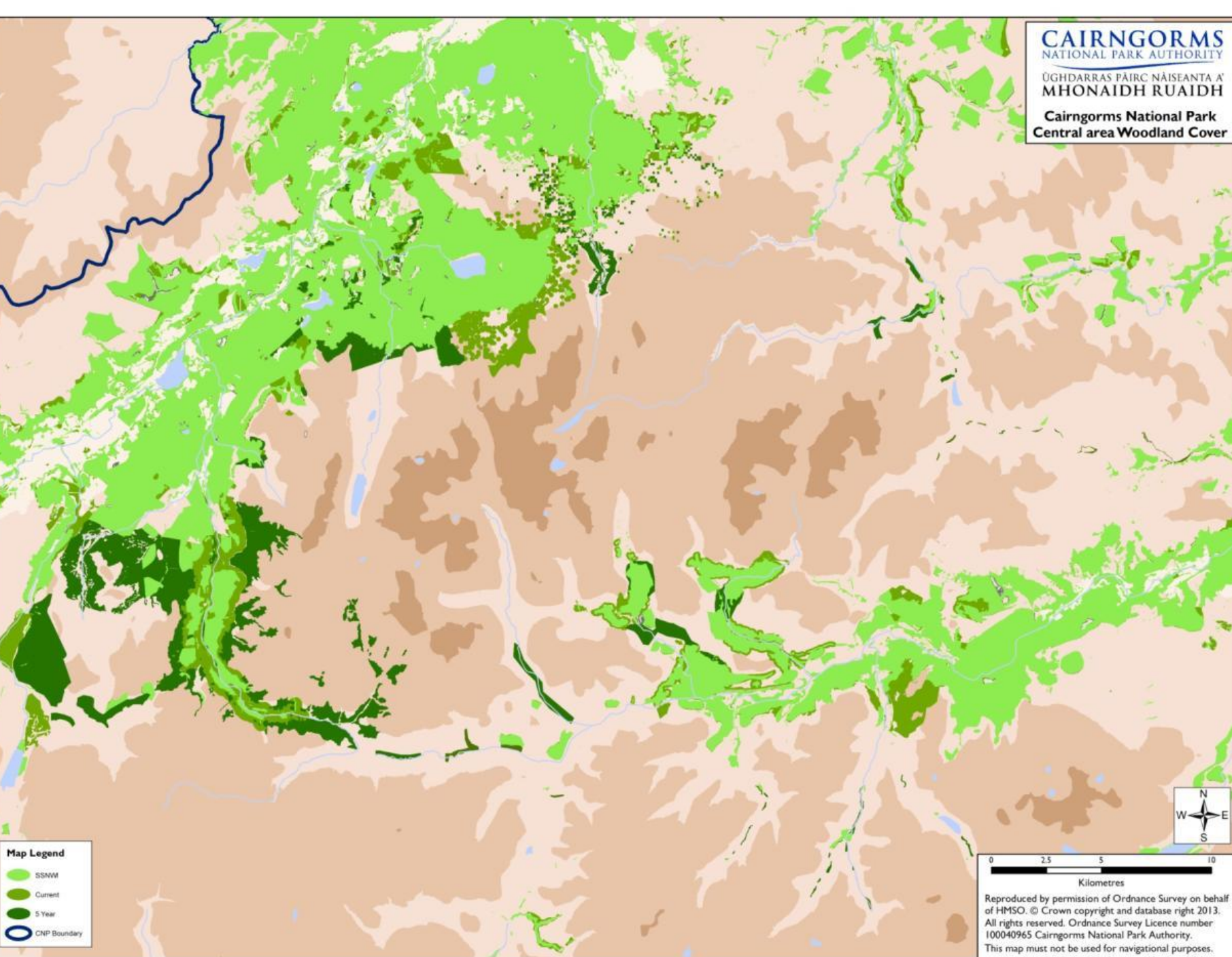
LTSER signatories so far...

- UHI
- CEH
- SNH
- James Hutton Institute

CAIRNGORMS
NATIONAL PARK AUTHORITY

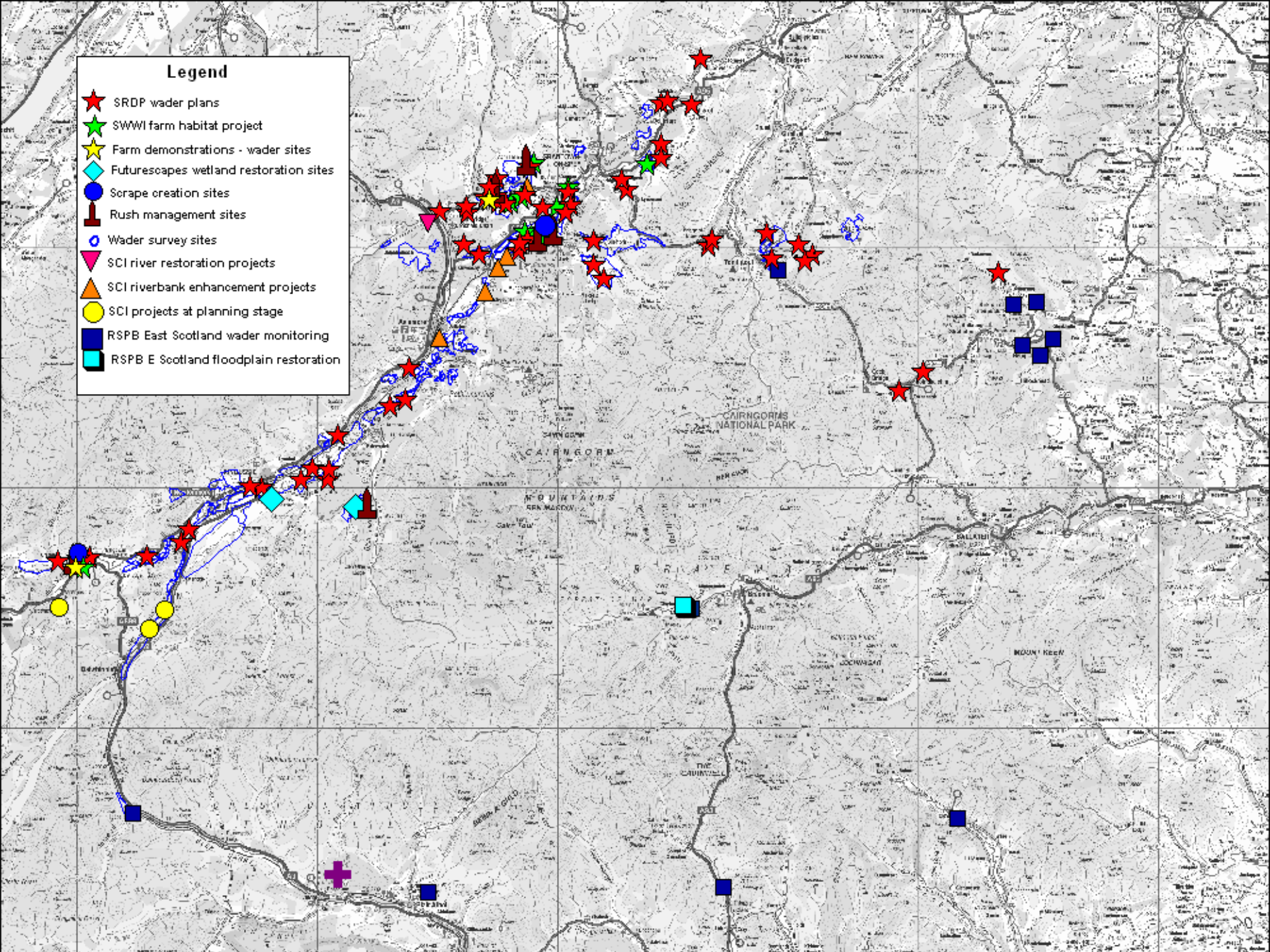
ÙGH DARRAS PÀIRC NÀISEANTA A'
MHONÀIDH RUÀIDH

Cairngorms National Park
Central area Woodland Cover

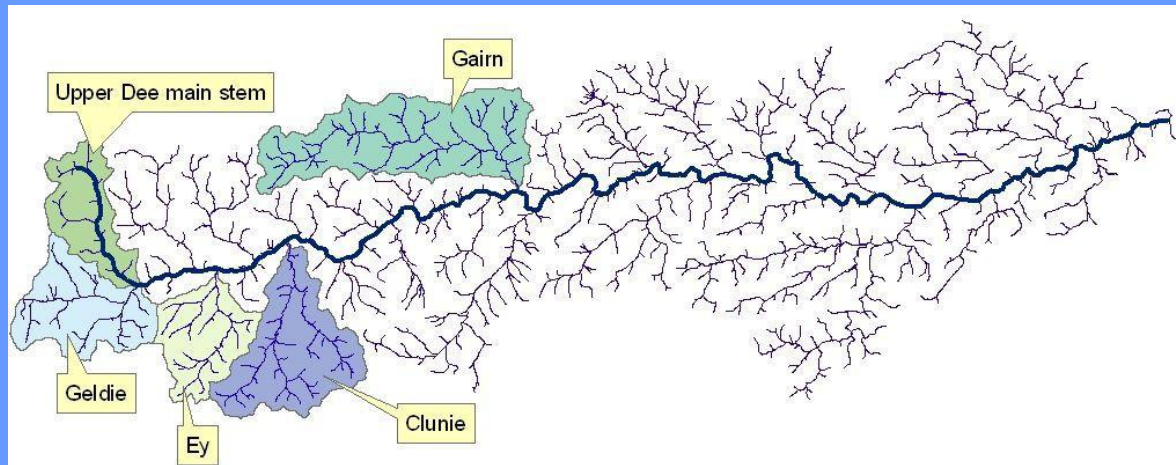


Legend

- ★ SRDP water plans
- ★ SWWI farm habitat project
- ★ Farm demonstrations - wader sites
- ◆ Futescapes wetland restoration sites
- Scrape creation sites
- ⌵ Rush management sites
- Wader survey sites
- ▲ SCl river restoration projects
- ▲ SCl riverbank enhancement projects
- SCl projects at planning stage
- RSPB East Scotland wader monitoring
- RSPB E Scotland floodplain restoration



Catchment initiatives





Our Services

[Funding](#)

[Training](#)

[CNPA Logo](#)

[Advice & Guidelines](#)

[Land Management Support](#)

[Consultations](#)

[Scotland's Environmental & Rural Services](#)

[Cairngorms Research](#)

Cairngorms Research

The Cairngorms National Park is a learning landscape. It provides outstanding opportunities for collaborative research across disciplines that can directly influence management in the National Park, other parts of Scotland and even other parts of the world. Everyone can help whether you are a researchers, a land manager, a school pupil or visitor.

From these pages you can find out more about our strategy for research, the research projects being undertaken, published research, how to get involved and where to get more information.

[Research Strategy](#)



[Cairngorms long-term Social & Ecological Research](#)



[Projects](#)



[Publications](#)



[Get Involved](#)



[Data Sources](#)

