

# National Park Partnership Plan 2017

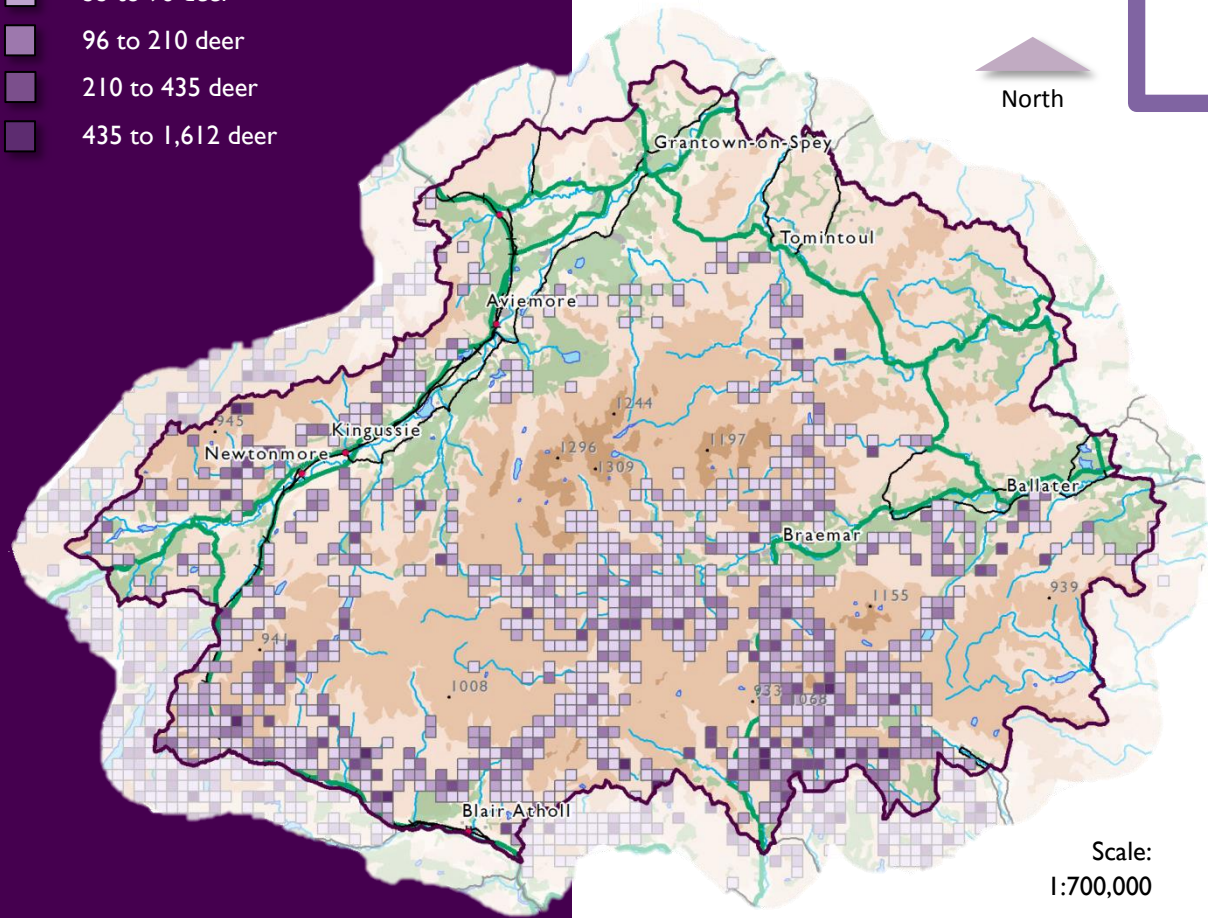
## DEER & MOORLAND MANAGEMENT

### ISSUES

- Changing trends in land management e.g. in some places a shift from sporting deer forest to habitat management, in other places increased intensity of management for grouse;
- Impacts of deer and grouse management in delivering woodland expansion and peatland restoration;
- A wider public interest remit for deer management groups and planning now in place;
- Restoring areas of peat in poor condition to improve ecosystem function and mitigate climate change;
- Raptor persecution and underlying conflicts between raptor conservation and the impacts of muirburn;
- Ensuring land management activities e.g. muirburn and fencing does not adversely impact on landscape and recreation value; and
- Need to meet Climate Change (Scotland) Act 2009 woodland expansion targets.



Deer density polygons of 1km<sup>2</sup> based on results from deer counts, 2000 - 2010



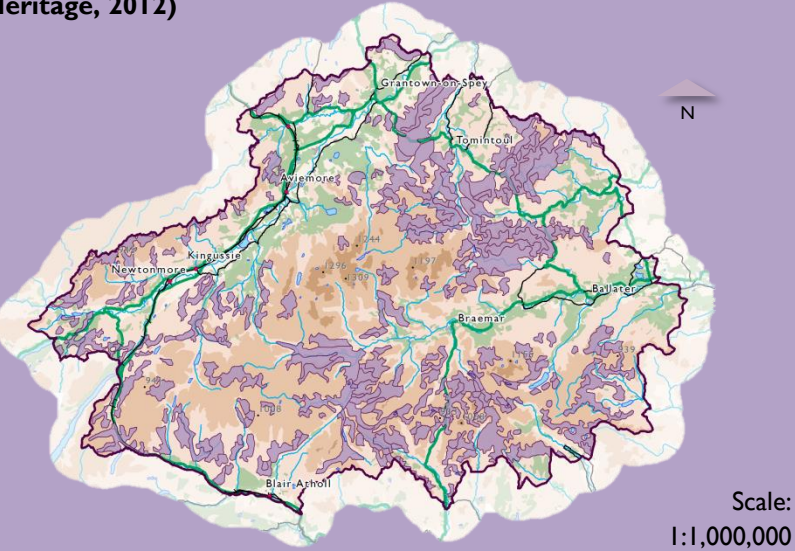
### KEY QUESTIONS

- Should the Partnership Plan set guidance on the appropriate range of deer densities necessary to deliver the public interest?
- How can management for grouse be better integrated with wider habitat and species enhancement objectives such as woodland expansion, peatland restoration and raptor conservation?

### MECHANISMS FOR DELIVERY

- Collaboration across land holdings
- Deer Management Groups and Plans
- Cairngorms Nature
- The East Cairngorms Moorland Partnership
- Catchment Partnerships
- Designated site management
- National legislation including the Land Reform (Scotland) Act 2003, Climate Change (Scotland) Act 2009 and the Wildlife and Natural Environment (Scotland) Act 2011

Areas with an average peat depth in excess of one metre (Scottish Natural Heritage, 2012)



### TARGETS / PREFERRED DIRECTION

- Continue to improve and enhance the quality of moorland and montane habitats, particularly those in unfavourable condition;
- Manage deer numbers and muirburn to enable habitat enhancement;
- Improve the integration of grouse moor and sporting deer management with wider habitat and species diversity;
- Improve raptor population conservation;
- Expand peatland restoration projects; and
- Meet Climate Change (Scotland) Act 2009 woodland expansion targets and reduce greenhouse gas emissions.

Heather moorland areas within the Cairngorms National Park

