



Cairngorms National Park Partnership Plan 2022

STRATEGY

Strategic Environmental Assessment

Scoping Report January 2020

Cover Note **PART 1**

To: SEA_Gateway@gov.scot
SEA Gateway
2 H (South)
Victoria Quay
Edinburgh
EH6 6QQ

PART 2

An SEA Scoping Report is attached for the plan, programme or strategy (PPS) entitled:

Cairngorms National Park Partnership Plan 2022 - 2027

The Responsible Authority is:

Cairngorms National Park Authority

PART 3

- The PPS falls under the scope of Section 5(3) of the Act and requires an SEA under the Environmental Assessment (Scotland) Act 2005. or
- The PPS falls under the scope of Section 5(4) of the Act and requires an SEA under the Environmental Assessment (Scotland) Act 2005. or
- The PPS does not require an SEA under the Environmental Assessment (Scotland) Act 2005. However, we wish to carry out an SEA on a voluntary basis. We accept that, as this SEA is voluntary, the statutory 5 week timescale for views from the Consultation Authorities cannot be guaranteed.

PART 4

Contact name

Nina Caudrey

Job Title

Planning Officer (Development Planning)

Contact address

Cairngorms National Park Authority
14 The Square
Granttown-on-Spey
PH26 3HG

Contact tel no

01479 873535

Contact email

ninacaudrey@cairngorms.co.uk

PART 5

Signature
(electronic signature is acceptable)

Nina Caudrey

Date

20 January 2020

Table of Contents

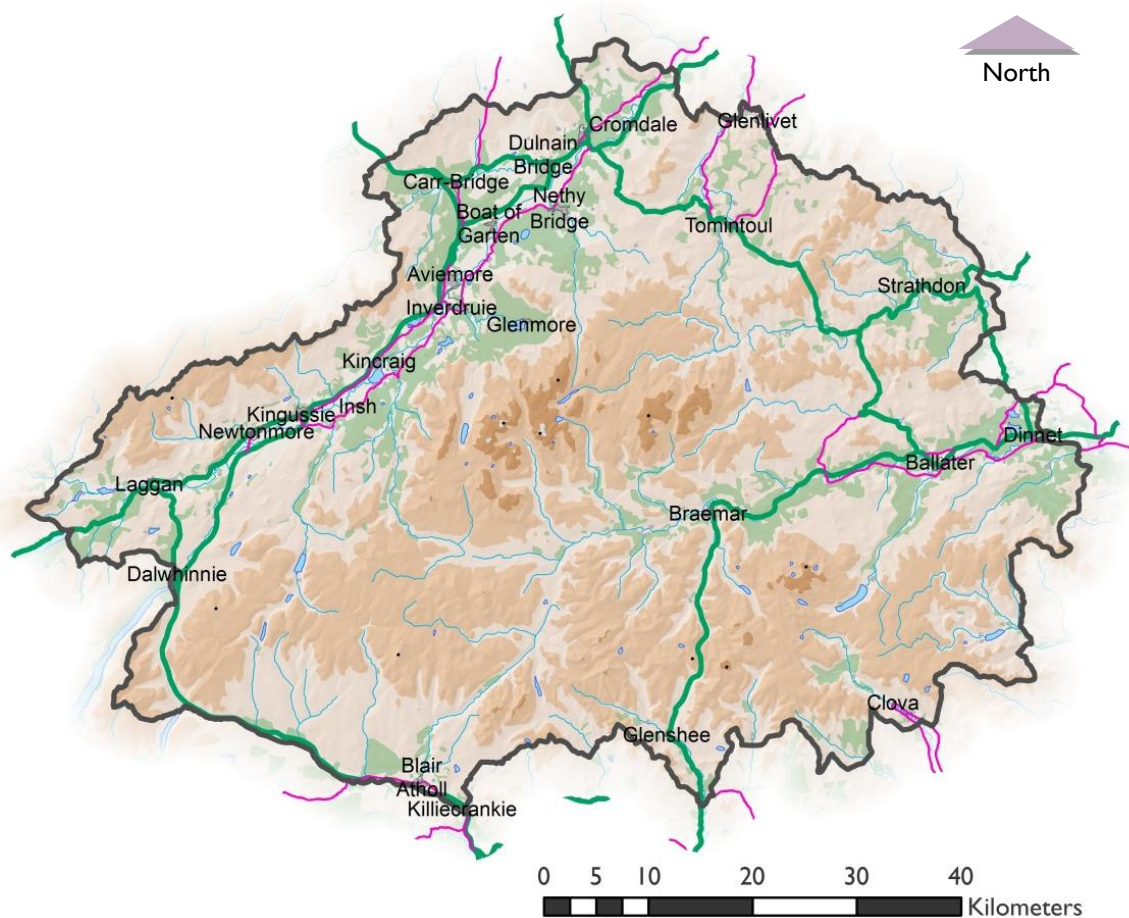
1. Context	1
a. Background	1
b. About the National Park Partnership Plan	2
c. Other relevant plans, programmes and strategies	3
2. Scoping information	3
a. Topics considered	3
b. Topics scoped in	3
c. Environmental baseline	4
3. Proposed environmental assessment methodology	4
a. Process	4
b. Assessment templates and SEA objectives	4
c. Longevity and permanence of effects	5
d. Alternatives and mitigation	5
e. Cumulative and in-combination effects	5
f. Other environmental assessments	5
4. Next steps	11
a. Scoping advice sought from consultation authorities	11
b. Draft Environmental Report proposed consultation period	11
c. Indicative timescales for plan preparation and consultation	11
Annex I: Plans, programmes and strategies relevant to the NPPP	12
Annex II: Baseline environmental data	34
Annex III: Data analysis information	35
Annex IV: Protected area condition data	39

Note: Topic papers are separate documents

I. Context

a. Background

The plan being scoped is the fourth National Park Partnership Plan (NPPP). The NPPP will be a five year management plan covering the whole of the Cairngorms National Park area (figure 1) for the period 2022 – 2027 although it will also contain targets up to 2040. It will replace the current NPPP, which covers the period 2017 – 2022. NPPPs seek to identify key land management, social and economic issues for the Park as a whole, along with strategic measures to alleviate them.



Reproduced by permission of Ordnance Survey on behalf of HMSO. © Crown copyright and database right 2015. All rights reserved. Ordnance Survey Licence number 100040965 Cairngorms National Park Authority.

Figure 1 – the area covered by the National Park Partnership Plan.

The fourth NPPP is at a very early stage of development, with consideration of the key issues and focus for the NPPP taking place during 2020. This has made detailed scoping difficult, as the content of the future NPPP is unknown. However, as the NPPP will be strategic in nature it has been possible to scope the potential for environmental effects by using the broad categories outlined by SEA Topics (as defined in section 2. Scoping information).

Consideration of the potential for environmental effects has been done by using the contents of the current NPPP as a guide as to what broad type of issue may be included in the next NPPP (eg housing that is affordable for those working in the Park remains a key issue), along with significant environmental issues that have come to the fore since publication of the current NPPP (such as the climate emergency).

b. About the National Park Partnership Plan

Having a NPPP is a legal requirement under required under section 11 of the National Parks (Scotland) Act 2000. The NPPP will:

- Set the strategic vision and priorities for managing the Park by identifying key land management, social and economic issues.
- Identify measures that the Cairngorms National Park Authority (CNPA) and partners think will alleviate the issues and make the biggest contribution to a successful National Park over the plan's lifetime and beyond.
- Provide focus and priorities at a time of limited financial resources.
- Show how the four aims of the National Park can be achieved together, benefiting people and place.

The NPPP will also provide strategic direction for five key strategies and plans that sit below it, as shown in figure 2. In turn, these plans and strategies will support delivery of the NPPP priorities.



Figure 2 – hierarchy of CNPA plans and strategies linked to the NPPP

c. Other relevant plans, programmes and strategies

There are a large number of other plans, programmes and strategies (PPS) that are of relevance to the NPPP. Due to their number, these are listed in Annex I. The PPS are categorised according to their international, national and local scales and are accompanied by information on their purpose, relationship with the NPPP and their relevance to the environmental assessment.

The environmental assessment that informs the Environmental Report will need to consider the PPS that are active at the time of writing. Therefore this aspect of the assessment will be reviewed as the assessment progresses.

2. Scoping information

a. Topics considered

Schedule 3 of the Environmental Assessment (Scotland) Act 2005 lists categories of potential environmental effects that should be considered as part of the environmental assessment process. These have been grouped together into eight Topic areas. The Topics are:

- Topic 1: Climatic Factors
- Topic 2: Air
- Topic 3: Water
- Topic 4: Soil (including geodiversity¹)
- Topic 5: Material Assets
- Topic 6: Biodiversity, Flora and Fauna
- Topic 7: Landscape and Cultural Heritage
- Topic 8: Population and Human Health

b. Topics scoped in

All the SEA Topics identified in section 2.a have been scoped in, as the strategic nature of the NPPP and baseline issues identified in the Topic papers have the potential to influence all topics.

¹ With the small number of commercial quarries in the Park, geodiversity is more relevant to soils (Topic 4) in the Park. Therefore, consideration of geodiversity will be included under Topic 4, Soils, rather than the conventional location of Topic 5, Material Assets. (The contribution of mineral extraction to resources will however still be included under Topic 5.)

c. Environmental baseline

The separate Topic papers present detailed information on the environmental baseline, ordered by the eight different topic areas: climatic factors, air, water, soil, material assets, biodiversity flora and fauna, landscape and cultural heritage, population and human health.

3. Proposed environmental assessment methodology

a. Process

The intended SEA process is to:

- Gather environmental baseline data and information, identify draft methodology.
- Consult on the scoping report, to confirm the environmental baseline is complete and agree the assessment methodology with consultation authorities (current stage).
- Alongside the preparation of the outline NPPP, carry out environmental assessment and prepare a draft Environmental Report, using the assessment methodology and taking into account consultation authority advice on the scoping report.
- Consult on the draft Environmental Report and outline NPPP.
- Finalise the NPPP and amend the Environmental Report accordingly, taking into account consultation authority advice.
- Adopt the NPPP and issue a post-adoption statement on the Environmental Report.
- Monitor environmental effects during the Plan period, identify and implement mitigation where unexpected adverse effects occur.

b. Assessment templates and SEA objectives

At this stage, it is intended that the assessment will focus on the vision and principles/objectives of the NPPP, where these give a direction that may have environmental effects. Tables 1, 2 and 3 will be used as a basis for carrying out the environmental assessment and recording the findings. Table 1 (found in section f, **Other environmental assessments**) provides the intended scoring matrix that will be used to ensure consistency during the environmental assessment. Tables 2 and 3 (found in section f, **Other environmental assessments**) provides the main objectives and template for scoring and recording potential environmental effects during the environmental assessment. It incorporates proposed SEA objectives and sub-objectives that each element of the NPPP will be scored against.

Where available, guidance published by the consultation authorities has been used as a basis for setting the SEA objectives and sub-objectives. These relate to the specific SEA environmental receptors and issues that have the potential to be affected by the NPPP.

The information and issues identified as part of the baseline have also been used to inform which objectives and sub-objectives are relevant to the environmental assessment of the NPPP.

The SEA objectives and questions are provisional and may be modified during the SEA process – for example as a result of comments from the Consultation Authorities, changes in the baseline data when it is fully collected and/or if the content of the draft NPPP covers different subject matter than currently expected.

c. Longevity and permanence of effects

Consideration of longevity and scale of effects is built in to the assessment table template, so will form an integral part of the environmental assessment for each element assessed.

d. Alternatives and mitigation

At this stage, the NPPP vision, overall strategy, principles and priorities, as well as any possible alternatives are unknown. However alternative options will be considered and assessed as different options start to emerge during the drafting of the NPPP and as a result of the public consultation process.

e. Cumulative and in-combination effects

Consideration of the potential for cumulative and in-combination effects will be included as an integral part of the environmental assessment process for individual elements of the plan. A review of the assessment results will also be undertaken to double check any cumulative or in-combination effects that may not have been apparent during individual assessments.

f. Other environmental assessments

A Habitats Regulations Appraisal (HRA) will be undertaken at the same time as the draft Environmental Report. The HRA will be used to inform the Environmental Report and vice versa as part of an iterative process.

Table I – scoring matrix

Significance of Effect	
Element would have a major positive environmental effect in its current form as it would resolve an existing issue or maximise opportunities. SIGNIFICANT.	++
Element would have a minor positive environmental effect.	+
Effect of Element is uncertain.	?
No connectivity with the environmental Topic/Objective being assessed.	x
Element would have no predicted environmental effects.	0
Element would have a minor adverse environmental effect.	-
The Element would have a major adverse environmental effect as it would create significant new problems or substantially exacerbate existing problems. Consider exclusion of option. SIGNIFICANT.	--

Table 2 – main environmental objectives

Topic	Objective number	Main Objective(s)
Climatic factors	1a	Reduce the emissions of greenhouse gases with particular focus on emissions from buildings, transport, energy generation and industry (especially CO ₂), but also from natural carbon sinks (such as woodlands and peatlands).
Climatic factors	1b	Ensure existing and proposed infrastructure and buildings are located and designed to cope with future climate conditions.
Air	2a	To maintain or improve air quality and reduce emissions of key pollutants.
Water	3a	Maintain and improve the quality of water resources and to protect and enhance the state of the water environment.
Water	3b	Reduce demand for water and minimise unnecessary water use.
Water	3c	To reduce the impact of invasive non-native species on the water environment.
Soil and geodiversity	4a	Minimise contamination and safeguard and improve soil, peat quality and geodiversity.
Material assets	5a	Encourage the sustainable use and reuse of material assets.
Biodiversity flora and fauna	6a	Protect and enhance the biodiversity of the National Park.
Landscape and cultural heritage	7a	Protect and enhance the character, diversity and special qualities of the landscapes of the Park.
Landscape and cultural heritage	7b	Protect and enhance the historic and cultural environment and assets (including linguistic) of the Park.
Population and human health	8a	Support and enhance the health and wellbeing of residents and visitors to the Park through housing, recreation and employment opportunities.

Table 3 – environmental assessment template

SEA Issue / Topic <i>Insert Issue / Topic title</i>					
SEA Objective(s): <i>Insert SEA Objective(s)</i>					
Significant Interrelationships <i>Insert significant relationships with other SEA Issues / Topic</i>					
Assessor(s): <i>Insert assessor(s)'s name</i>					
Date of Assessment: <i>Insert date(s) of assessment</i>					
SECTION OF PLAN BEING ASSESSED: <i>(eg Vision, Policy X, Option 1A, etc)</i>					
		Assessment of environmental effects			
SEA objective	SEA sub-objective	Nature of effect <i>Insert a description of the nature of the potential effect the Option will have on the issue against the criteria set out by the SEA Objective. Include consideration of cumulative effects. Link to baseline information as necessary.</i>	Scoring: significance of effect before mitigation <i>Insert scoring for the significance of the environmental effect BEFORE mitigation (using the symbology in Table 1)</i>	Mitigation and enhancement <i>Insert information on how adverse effects will be mitigated and/or how enhancements will be used to create positive effects.</i>	Scoring: residual significance of effect after mitigation <i>Insert scoring for the residual significance of the environmental effect AFTER mitigation (using the symbology in Table 1)</i>
1a	Will there be an effect on energy conservation and efficiency in new development?				
1a	Will there be an effect on the production of renewable energy of appropriate scale for the Park?				
1a	Will there be an effect on local production and use of materials and food produce?				
1a	Will there be an effect on carbon sinks (such as woodlands and peatlands)?				
1a	Will there be an effect on travel that produces greenhouse gas emissions?				
1b	Considering future implications of climate change (eg increased severity of weather resulting in more flooding, periods of drought and extremes of temperature), will there be an effect on existing infrastructure and buildings?				
1b	Considering future implications of climate change (eg increased severity of weather resulting in more flooding, periods of drought and extremes of temperature), will there be an effect on infrastructure and buildings proposed in the Local Development Plan?				

2a	Will there be an effect on the levels of UK National Air Quality pollutants (e.g. NO ₂ , PM ₁₀ , PM _{2.5} , SO ₂)?				
2a	Will there be an effect on the levels of other types of air pollution (eg particulates)?				
3a	Will there be an effect on the water quality of rivers, lochs and ground-water from diffuse and point source pollution?				
3a	Will there be an effect on the ability of river catchments to store water and the natural flood management services they provide?				
3a	Will there be an effect on public water supplies?				
3b	Will there be an effect on demand for water from development (residential and business)?				
3b	Will there be an effect on sustainable use of water resources?				
3c	Will there be an effect on the water environment from invasive non-native species?				
4a	Will there be an effect on carbon rich soils, in particular peat?				
4a	Will there be an effect on soil sealing, soil structure and soil loss?				
4a	Will there be an effect on the levels of soil contamination?				
4a	Will there be an effect on soil erosion and landslides?				
4a	Will there be an effect on geodiversity interests (eg GCRs)?				
5a	Will there be an effect on sustainable use of natural resources (eg water, timber, aggregates)?				
5a	Will there be an effect on the sustainable use and management of existing and proposed infrastructure (eg water, heat, energy or flood protection infrastructure)?				
5a	Will there be an effect on the use of finite resources through the use of secondary and recycled materials?				
6a	Will there be an effect on the favourable condition of areas protected for nature conservation?				

6a	Will there be an effect on protected species?				
6a	Will there be an effect on Cairngorms Nature Action Plan habitats and plants?				
6a	Will there be an effect on Cairngorms Nature Action Plan bird and mammal species?				
6a	Will there be an effect on wider biodiversity (outwith protected areas and the habitats and species identified in the CNAP) in the National Park?				
6a	Will there be an effect on deer management practices that seek to reduce environmental effects?				
6a	Will there be an effect on land management practices that seek to avoid the introduction and spread of invasive non-native species and tree diseases?				
7a	Will there be an effect on the special qualities of the National Park landscapes?				
7a	Will there be an effect on landscape character and local distinctiveness?				
7b	Will there be an effect on the historic and cultural environment and assets (including linguistic)?				
8a	Will there be an effect on housing for local needs?				
8a	Will there be an effect on recreation and active travel opportunities that support healthier lifestyles?				
8a	Will there be an effect on employment opportunities local to places of residence?				

4. Next steps

a. Scoping advice sought from consultation authorities

As described in the previous sections, all Topics have been scoped in but the contents of the NPPP are at this stage unknown. CNPA therefore wish to seek the particular advice of the consultation authorities on:

- the proposed methodology (section 3)
- whether there are gaps or errors in the environmental baseline information identified in separate Topic papers,
- if there is new information that is expected to become available over the next 12-18 months that could be useful to add to the environmental baseline.

The advice of the consultation authorities will be valuable for informing both the environmental assessment and the NPPP going forward.

b. Draft Environmental Report proposed consultation period

A six to eight week consultation period is anticipated for the draft Environmental Report.

c. Indicative timescales for plan preparation and consultation

Initial identification of the issues and priorities for the outline NPPP will take place during 2020. A public consultation on the issues identified, draft priorities and alternatives (where relevant), as well as draft environmental assessments, is intended to take place in 2021. The finalised NPPP should be ready for adoption in summer 2022.

Annex I: Plans, programmes and strategies relevant to the NPPP

Relevant PPS	Relevant objectives/purpose	SEA Topic	Relationship between the PPS and the NPPP
International Directives and Policies (note that this list will be subject change due to the UK leaving the EU on 31 January 2020)			
The Clean Air Policy Package (EC, 2013)	The package consists of a Clean Air Programme for Europe with air quality objectives for the period up to 2030, a revised National Emission Ceilings Directive (currently under review) with stricter national emission ceilings for the six main pollutants, and a proposal for a new Directive to reduce pollution from medium-sized combustion installations.	<ul style="list-style-type: none"> ➤ Air ➤ Water ➤ Soil and geodiversity ➤ Biodiversity, Flora and Fauna ➤ Population and Human Health 	The proposals in the NPPP should not adversely affect air quality.
Directive 91/676/EEC: Nitrates Directive	Requires member states to reduce water pollution caused or induced by nitrates from agricultural sources and to prevent further such pollution.	<ul style="list-style-type: none"> ➤ Water ➤ Biodiversity, Flora and Fauna 	The proposals in the NPPP should not increase water pollution caused or induced by nitrates from agricultural sources.
Directive 92/42/EC: The Conservation of Natural Habitats of Wild Fauna and Flora	Requires member states to sustain populations of naturally occurring flora and fauna by sustaining areas of habitats to maintain ecologically and scientifically sound levels.	<ul style="list-style-type: none"> ➤ Water ➤ Biodiversity, Fauna and Flora ➤ Landscape and Cultural Heritage 	The proposals in the NPPP must ensure protection and enhancement of European sites and protection of European Protected Species.
Directive 1999/31/EC: Landfill of waste Directive	The objective of the Directive is to prevent or reduce as far as possible negative effects on the environment, in particular on surface water, groundwater, soil, air, and on human health from the landfilling of waste by introducing	<ul style="list-style-type: none"> ➤ Air ➤ Water ➤ Soil and geodiversity 	The proposals in the NPPP should promote the waste hierarchy and work towards reducing landfill waste.

Relevant PPS	Relevant objectives/purpose	SEA Topic	Relationship between the PPS and the NPPP
	stringent technical requirements for waste and landfills.	<ul style="list-style-type: none"> ➤ Material Assets ➤ Population and Human Health 	
Directive 2000/60/EC: The Water Framework Directive	Requires member states to achieve good ecological status of inland water bodies, and develop integrated catchment management and river basin management plans.	<ul style="list-style-type: none"> ➤ Water ➤ Biodiversity, Flora and Fauna ➤ Landscape and Cultural Heritage 	The proposals in the NPPP should support protection and enhancement of the water environment.
Directive 2001/42/EC: Strategic Environmental Assessment Directive	Requires Strategic Environmental Assessments to be undertaken for plans, programmes and strategies with significant environmental effects.	<ul style="list-style-type: none"> ➤ All Topics 	Enables significant environmental effects of proposals in the plan to be identified and addressed.
Directive 2001/81/EC (NECD): National Emissions Ceiling Directive	Sets ceilings for each member state for emissions of ammonia, oxides of nitrogen, sulphur dioxide and volatile organic compounds.	<ul style="list-style-type: none"> ➤ Air ➤ Population and Human health 	The proposals in the NPPP should reflect the purpose of the Directive and should not adversely affect air quality.
Directive 2002/49/EC: Environmental Noise Directive	Aims to define a common approach intended to avoid, prevent or reduce on a prioritised basis the harmful effects, including annoyance, due to the exposure to environmental noise	<ul style="list-style-type: none"> ➤ Population and Human health 	The proposals in the NPPP should seek to ensure it does not result in negative health and wellbeing effects resulting from noise.
Directive 2006/7/EC: Bathing Water Directive	Aims to protect the public and the environment from faecal pollution at waters used for bathing by a large number of visitors.	<ul style="list-style-type: none"> ➤ Water ➤ Population and Human health 	The proposals in the NPPP should consider the contribution that actions could make towards the attainment of bathing water quality standards.
Directive 2006/113/EC: The	Aims to protect or improve shellfish waters in order to	<ul style="list-style-type: none"> ➤ Water 	The proposals in the NPPP should

Relevant PPS	Relevant objectives/purpose	SEA Topic	Relationship between the PPS and the NPPP
Shellfish Waters Directive	support shellfish life and growth. It is designed to protect the aquatic habitat of bivalve and gastropod molluscs, which include oysters, mussels, cockles, scallops and clams.	<ul style="list-style-type: none"> ➤ Biodiversity, Flora and Fauna 	seek to avoid negative effects on shellfish waters, which in the Park includes freshwater pearl mussel.
Directive 2006/118/EC: Groundwater Daughter Directive	Made under the Water Framework Directive, the Daughter Directive aims to prevent and limit inputs of pollutants to groundwater.	<ul style="list-style-type: none"> ➤ Water ➤ Soil and geodiversity ➤ Population and Human health 	The proposals in the NPPP should where possible contribute to the protection of groundwater resources.
Directive 2007/60/EC: Floods Directive	Requires member states to assess if all water courses and coast lines are at risk from flooding, to map the flood extent and assets and humans at risk in these areas and to take adequate and coordinated measures to reduce this flood risk	<ul style="list-style-type: none"> ➤ Climatic Factors ➤ Water ➤ Population and Human health 	The proposals in the NPPP should reduce and manage flood risk encouraging natural flood management approaches.
Directive 2008/50/EC: Ambient Air Quality and Cleaner Air for Europe	Establishes standards for air quality and sets limits for various pollutants.	<ul style="list-style-type: none"> ➤ Air ➤ Population and Human health 	The proposals in the NPPP should support measures that would improve air quality.
Directive 2008/98/EC: Waste Framework Directive	The revised EU Waste Framework Directive establishes the legislative framework for the handling of waste by member states.	<ul style="list-style-type: none"> ➤ Material assets ➤ Population and Human health 	The proposals in the NPPP should, if needed, support waste management within the National Park.
Directive 2009/28/EC: Promotion of the use of energy from renewable sources	Establishes a common framework for the production of energy from renewable sources and the promotion of its use.	<ul style="list-style-type: none"> ➤ Climatic factors 	The proposals in the NPPP should seek to promote the development and use of appropriate renewable energy sources.
Directive 2009/147/EC on the Conservation of Wild Birds	Requires member states to sustain populations of naturally occurring wild birds by sustaining areas of habitats to maintain ecologically and scientifically sound levels.	<ul style="list-style-type: none"> ➤ Water ➤ Biodiversity, Flora and Fauna 	The proposals in the NPPP should support protection and enhancement of bird habitat where relevant to the priorities identified.

Relevant PPS	Relevant objectives/purpose	SEA Topic	Relationship between the PPS and the NPPP
		<ul style="list-style-type: none"> ➤ Landscape and Cultural Heritage 	
European Charter for Regional or Minority Languages (European Council, 1992)	European adopted under the auspices of the Council of Europe to protect and promote historical regional and minority languages in Europe. Identifies Gaelic as being an endangered language.	<ul style="list-style-type: none"> ➤ Landscape and Cultural heritage ➤ Population and Human health 	The proposals in the NPPP should support the Gaelic language where relevant to the priorities identified.
European Landscape Convention (European Commission, 2000)	Promotes the protection, management and planning of European landscapes and organises European co-operation on landscape issues	<ul style="list-style-type: none"> ➤ Biodiversity, Flora and Fauna ➤ Landscape and Cultural heritage ➤ Population and Human health 	Where relevant to the priorities identified, the proposals in the NPPP should be a tool for the maintenance and restoration of landscapes and their natural habitats.
European Union Biodiversity Strategy to 2020 (European Commission, 2011)	Strategy aims to halt the loss of biodiversity and ecosystem services in the EU by 2020.	<ul style="list-style-type: none"> ➤ Biodiversity, Flora and Fauna 	Where relevant to the priorities identified, the proposals in the NPPP should support conservation and enhancement of biodiversity.
The Paris Agreement (United Nations Framework Convention on Climate Change, 2015)	The agreement sets out a global action plan to put the world on track to avoid dangerous climate change by limiting global warming to well below 2°C and pursuing efforts to limit it to 1.5°C.	<ul style="list-style-type: none"> ➤ Climatic Factors 	Where relevant to the priorities identified, the proposals in the NPPP should seek to promote the development and use of appropriate renewable energy sources and contribute to climate change mitigation.

Relevant PPS	Relevant objectives/purpose	SEA Topic	Relationship between the PPS and the NPPP
European Union Common Agricultural Policy (European Commission, undated)	Sets policy for agricultural support with increased emphasis on rural development support.	<ul style="list-style-type: none"> ➤ Landscape and Cultural Heritage ➤ Biodiversity, flora and fauna ➤ Population and Human Health 	Where relevant to the priorities identified, the proposals in the NPPP should recognise and provide for rural diversification of economic activities.
2030 Climate and Energy Framework (European Commission, undated)	A framework for EU climate and energy policies in the period from 2020 to 2030. At the heart of the 2030 framework is a 40 % reduction in greenhouse gas emissions by 2030.	<ul style="list-style-type: none"> ➤ Climatic Factors 	Where relevant to the priorities identified, the proposals in the NPPP should seek to promote the development and use of appropriate renewable energy sources and contribute to climate change mitigation.
Kyoto Protocol (UNFCCC, 1997)	Protocol to the international Framework Convention on Climate Change with the objective of reducing the Greenhouse gases that cause climate change.	<ul style="list-style-type: none"> ➤ Climatic factors 	Where relevant to the priorities identified, the proposals in the NPPP should support measures that will reduce greenhouse gas emissions.
The Pan-European Biological and Landscape Diversity Strategy (Council of Europe, 1995)	The Strategy aims to reverse the decline of landscape and biological diversity, by promoting innovation and proactive policy making.	<ul style="list-style-type: none"> ➤ Biodiversity, Flora and Fauna ➤ Landscape and Cultural Heritage ➤ Population and Human health 	Where relevant to the priorities identified, the proposals in the NPPP should support the Strategy by considering the contribution that actions could make to protecting biodiversity and landscapes.
Ramsar Convention on Wetlands of International	Requires conservation and wise use of wetlands.	<ul style="list-style-type: none"> ➤ Water 	Where relevant to the priorities identified, the proposals in the NPPP

Relevant PPS	Relevant objectives/purpose	SEA Topic	Relationship between the PPS and the NPPP
Importance 1971		<ul style="list-style-type: none"> ➤ Biodiversity, Flora and Fauna ➤ Landscape and Cultural Heritage 	should ensure the protection and enhancement of wetlands.
Seventh Environmental Action Programme of the European Community (European Commission, undated)	The objectives are identifies three key objectives: to protect, conserve and enhance the Union's natural capital; to turn the Union into a resource-efficient, green, and competitive low-carbon economy; to safeguard the Union's citizens from environment-related pressures and risks to health and wellbeing. It also identifies means of achieving this that member states should implement.	All Topics	Where relevant to the priorities identified, the proposals in the NPPP should promote all forms of sustainable development.
Taking Sustainable Use of Resources Forward: A thematic Strategy on the prevention and recycling of waste (EU 2005)	A sector based strategy produced as a requirement of the Seventh Environmental Action Programme of the European Community, seeking to help Europe become a recycling society that seeks to avoid waste and uses waste as a resource.	<ul style="list-style-type: none"> ➤ Climatic factors ➤ Air ➤ Material assets 	Where relevant to the priorities identified, the proposals in the NPPP should seek to minimise waste and promote recycling.
Thematic Strategy for Soil Protection (EU 2006)	A sector based strategy produced as a requirement of the Seventh Environmental Action Programme of the European Community, seeking to establish common principles for the protection and sustainable use of soils.	<ul style="list-style-type: none"> ➤ Soil and geodiversity 	Where relevant to the priorities identified, the proposals in the NPPP should contribute towards the protection and improvement of soil.
UN Convention on Biological Diversity (UN, 1992)	An international legally-binding treaty with three main goals: conservation of biodiversity; sustainable use of biodiversity; fair and equitable sharing of the benefits arising from the use of genetic resources.	<ul style="list-style-type: none"> ➤ Biodiversity, Flora and Fauna 	Where relevant to the priorities identified, the proposals in the NPPP should look for opportunities to conserve, and where possible restore, biodiversity.
UN Framework Convention	Treaty aimed at reducing global emissions of greenhouse	<ul style="list-style-type: none"> ➤ Climatic 	Where relevant to the priorities

Relevant PPS	Relevant objectives/purpose	SEA Topic	Relationship between the PPS and the NPPP
on Climate Change (the Rio Earth Summit) 1992 (UN, 1992)	gases to combat global warming.	factors	identified, the proposals in the NPPP should assist in the reduction of greenhouse gas emissions.
National Legislation (UK and Scotland)			
Air Quality (Scotland) Regulations 2000 (as amended in Scotland)	Establishes standards for air quality and sets limits for various pollutants in Scotland.	<ul style="list-style-type: none"> ➤ Air ➤ Population and Human health 	Where relevant to the priorities identified, the proposals in the NPPP should support measures that would improve air quality.
Ancient Monuments and Archaeological Areas Act 1979 (as amended by Historic Environment (Amendment) (Scotland) Act 2011)	Prescribes the approach to be taken to planning for scheduled ancient monuments and archaeological areas.	<ul style="list-style-type: none"> ➤ Landscape and Cultural heritage 	Where relevant to the priorities identified, the proposals in the NPPP should ensure that scheduled ancient monuments and archaeological areas are not adversely affected by new development.
Climate Change (Scotland) Act 2009	Legislation to set a target for the year 2050, an interim target for the year 2020, and to provide for annual targets, for the reduction of greenhouse gas emissions; to provide about the giving of advice to the Scottish Ministers relating to climate change; to confer power on Ministers to impose climate change duties on public bodies; to make further provision about mitigation of and adaptation to climate change; to make provision about energy efficiency, including provision enabling council tax discounts; to make provision about the reduction and recycling of waste; and for connected purposes.	<ul style="list-style-type: none"> ➤ Climatic factors 	Where relevant to the priorities identified, the proposals in the NPPP should support and include climate change adaptation and mitigation measures.
Conservation (Natural Habitats, &c) Regulations 1994	These regulations relate to the designation of European sites, and provision of protection to various plant and	<ul style="list-style-type: none"> ➤ Biodiversity, Flora and Fauna 	Where relevant to the priorities identified, the proposals in the NPPP

Relevant PPS	Relevant objectives/purpose	SEA Topic	Relationship between the PPS and the NPPP
(as amended for Scotland)	animal species.		should ensure that European sites are protected from loss or damage.
Environment Act 1995	The Act sets new standards for environmental management by National Parks and other statutory bodies.	All Topics	The CNPA must adhere to the standards set out in the Act.
Environmental Assessment (Scotland) Act 2005	Requires Strategic Environmental Assessments to be completed for plans, programmes and strategies likely to have significant environmental effects.	All Topics	Enables the significant environmental effects of the plan to be identified and addressed.
Environmental Impact Assessment (Forestry) (Scotland) Regulations 2017	Requires environmental impact assessments for certain forestry projects.	All Topics	The plan will be required to be compatible with Environmental Impact Assessments legislation.
The Town and Country Planning (Environmental Impact Assessment) (Scotland) Regulations 2017	Requires environmental impact assessment of site specific projects and specifically requires consideration of Sensitive Areas including National Parks.	All Topics	The plan will be required to be compatible with Environmental Impact Assessments legislation.
Equality Act 2010	The Equality Act 2010 legally protects people from discrimination in the workplace and in wider society.	➤ Population and Human health	The plan should ensure that it does not result in individuals or groups with protected characteristics being discriminated against.
Flood Risk Management (Scotland) Act 2009	Establishes roles, responsibilities and requirements for sustainable flood management.	➤ Climatic Factors ➤ Water ➤ Population and Human health	The plan should support flood management, particularly natural flood management.
Gaelic Language (Scotland) Act 2005	The Act aims to secure Gaelic as an official language of Scotland, "commanding equal respect" with English	➤ Landscape and Cultural heritage ➤ Population and	In its production the plan should meet the requirements of the Act and enable and other partners, including those not covered by the

Relevant PPS	Relevant objectives/purpose	SEA Topic	Relationship between the PPS and the NPPP
		Human health	Act, to do the same.
Historic Environment Scotland Act 2014	Amongst other things, establishes Historic Environment Scotland with the general function of investigating, caring for and promoting Scotland's historic environment.	➤ Landscape and Cultural heritage	The plan should support the protection and preservation of the historic environment.
Housing (Scotland) Act 2014	Makes provision about housing, including provision about the abolition of the right to buy, social housing, the law affecting private housing, the regulation of letting agents and the licensing of sites for mobile homes.	➤ Population and Human health	The plan should support the provision of housing, particularly affordable housing.
Land Reform (Scotland) Act 2003	Establishes right of responsible access to land and water.	<ul style="list-style-type: none"> ➤ Water ➤ Landscape and Cultural Heritage ➤ Biodiversity, Flora and Fauna ➤ Population and Human health 	The plan can provide for and support responsible access.
National Parks (Scotland) Act 2000	Specifies what a Park Authority can do and how it should be run, including a requirement to produce a National Park Plan.	All Topics	Establishes the aims of National Parks. Provides direction on the functions and role of the National Park Authority.
Nature Conservation Act (Scotland) 2004	Act places duties on public bodies for conserving biodiversity, increases protection for Sites of Special Scientific Interest (SSSI), amends legislation on Nature Conservation Orders, provides for Land Management Orders for SSSIs and associated land, strengthens wildlife enforcement legislation, and requires the preparation of a Scottish Fossil Code.	<ul style="list-style-type: none"> ➤ Water ➤ Biodiversity, Flora and Fauna ➤ Landscape and Cultural 	Where relevant to the priorities identified, the proposals in the NPPP should support conservation and enhancement of biodiversity.

Relevant PPS	Relevant objectives/purpose	SEA Topic	Relationship between the PPS and the NPPP
		Heritage	
Planning (Listed Buildings and Conservation Areas) (Scotland) Act 1997	Prescribes the approach to be taken in planning for listed buildings, conservation areas and designed landscapes and gardens.	<ul style="list-style-type: none"> ➤ Material Assets ➤ Landscape and Cultural heritage 	Where relevant to the priorities identified, the proposals in the NPPP should ensure that listed buildings, conservation areas and designed landscapes and gardens are not adversely affected.
Protection of Badgers Act 1992 (as amended in Scotland)	Sets out offences in relation to the protection of badgers.	<ul style="list-style-type: none"> ➤ Biodiversity, Flora and Fauna 	Where relevant to the priorities identified, the proposals in the NPPP should seek to protect badgers.
Sewage (Scotland) Act 1968	Along with the Water Industry (Scotland) Act 2002 this gives responsibilities to Scottish Water to manage the discharge of surface water that enters its drainage systems (by providing sewers and public Sustainable Urban Drainage Systems (SUDs)) and to maintain water supplies and drainage infrastructure.	<ul style="list-style-type: none"> ➤ Water ➤ Population and Human health 	Where relevant to the priorities identified, the proposals in the NPPP should have regard to Scottish Water's duties under this Act.
Water Environment and Water Services (Scotland) Act 2003	Transposes the Water Framework Directive into Scots law.	<ul style="list-style-type: none"> ➤ Water ➤ Biodiversity, Flora and Fauna ➤ Landscape and Cultural Heritage ➤ Population and Human health 	Where relevant to the priorities identified, the proposals in the NPPP should encourage improvements to the water environment and support measures for more efficient use of water.

Relevant PPS	Relevant objectives/purpose	SEA Topic	Relationship between the PPS and the NPPP
Water Industry (Scotland) Act 2002	Along with the Sewage (Scotland) Act 1968 this gives responsibilities to Scottish Water to manage the discharge of surface water that enters its drainage systems (by providing sewers and public Sustainable Urban Drainage Systems (SUDs)) and to maintain water supplies and drainage infrastructure.	<ul style="list-style-type: none"> ➤ Water ➤ Population and Human health 	Where relevant to the priorities identified, the proposals in the NPPP should have regard to Scottish Water's duties under this Act.
Wildlife and Countryside Act 1981 (as amended in Scotland)	Sets out offences in relation to the protection of certain species.	<ul style="list-style-type: none"> ➤ Biodiversity, Flora and Fauna 	Where relevant to the priorities identified, the proposals in the NPPP should support protected species.
Wildlife and Natural Environment (Scotland) Act 2011	Amends Wildlife and Countryside Act 1981, and seeks to modernise game law; abolish the designation 'areas of special protection'; improve snaring practice; regulate invasive non-native species; change the licensing system for protected species; amend current arrangements for deer management and deer stalking; strengthen protection of badgers; change how muirburn can be practised; and make operational changes to the management of Sites of Scientific Interest; game law, use of shores, and invasive species legislation.	<ul style="list-style-type: none"> ➤ Biodiversity, Flora and Fauna 	Where relevant to the priorities identified, the proposals in the NPPP should support provisions of the Act.
Nature Conservation (Scotland) Act 2004	To make provision in relation to the conservation of biodiversity; to make further provision in relation to the conservation and enhancement of Scotland's natural features; to amend the law relating to the protection of certain birds, animals and plants; and for connected purposes.	<ul style="list-style-type: none"> ➤ Biodiversity, Flora and Fauna 	Where relevant to the priorities identified, the proposals in the NPPP should support provisions of the Act.
National Policy (UK and Scotland)			
The Air Quality (Scotland) Regulations 2000	Sets out air quality objectives for Scotland.	<ul style="list-style-type: none"> ➤ Air ➤ Population and 	Where relevant to the priorities identified, the proposals in the NPPP

Relevant PPS	Relevant objectives/purpose	SEA Topic	Relationship between the PPS and the NPPP
		Human health	should encourage reductions in emissions through a range of measures.
Creating Places - A policy statement on architecture and place for Scotland (Scottish Government, 2013)	A policy statement on architecture and place setting out the comprehensive value good design can deliver. The document contains an action plan that sets out the work that will be taken forward to achieve positive change.	<ul style="list-style-type: none"> ➤ Landscape and Cultural heritage ➤ Population and Human health 	Where relevant to the priorities identified, the proposals in the NPPP should support good design.
Scottish Climate Change Adaptation Programme (Scottish Government, 2014)	Sets objectives in relation to adaptation to climate change, Ministerial proposals and policies for meeting those objectives, and the period within which those proposals and policies will be introduced. The Programme also sets out the arrangements for wider engagement in meeting those objectives.	<ul style="list-style-type: none"> ➤ Climatic factors ➤ Population and Human health 	Where relevant to the priorities identified, the proposals in the NPPP should encourage reductions in emissions through a range of measures.
Civil Contingencies Act 2004	Delivers a framework for civil protection in the UK and defines the responsibilities for responders to emergency which include (among others)	<ul style="list-style-type: none"> ➤ Material Assets ➤ Population and Human health 	Where relevant to the priorities identified, the proposals in the NPPP should support the requirements of responders to fulfil their statutory duties.
Cleaner Air for Scotland – The Road to a Healthier Future (Scottish Government, 2015)	The national cross-government strategy that sets out how the Scottish Government and its partner organisations propose to reduce air pollution further to protect human health and fulfil Scotland’s legal responsibilities as soon as possible.	<ul style="list-style-type: none"> ➤ Air ➤ Population and Human health 	Where relevant to the priorities identified, the proposals in the NPPP should encourage reductions in emissions through a range of measures.
Climate Change: The UK Programme (UK Government, 2000)	Goal to reduce carbon emissions in the UK by 60% by 2050.	<ul style="list-style-type: none"> ➤ Climatic factors ➤ Air 	Where relevant to the priorities identified, the proposals in the NPPP should encourage reductions in

Relevant PPS	Relevant objectives/purpose	SEA Topic	Relationship between the PPS and the NPPP
			emissions through a range of measures.
Groundwater Protection Policy for Scotland (SEPA, 2009)	This policy aims to provide a sustainable future for Scotland's groundwater resources by protecting legitimate uses of groundwater and providing a common SEPA framework.	<ul style="list-style-type: none"> ➤ Water ➤ Soil and geodiversity 	Where relevant to the priorities identified, the proposals in the NPPP should aim, where possible, to manage significant flood risk to groundwater from flooding related pollution.
Designations Three Year Plan 2016 – 2019 (HES, 2016)	This document sets out the three year plan for Historic Environment Scotland's work on designations. Find the aims and priorities for the organisation until 2019	<ul style="list-style-type: none"> ➤ Landscape and Cultural heritage 	Where relevant to the priorities identified, the proposals in the NPPP should follow the guidance when considering designated sites and structures.
Historic Environment Circular I (HES, 2019)	This circular covers the requirements of the secondary legislation ('the Regulations') relating to the Historic Environment Scotland Act 2014 ('the 2014 Act').	<ul style="list-style-type: none"> ➤ Landscape and Cultural heritage 	Where relevant to the priorities identified, the proposals in the NPPP should follow the guidance for policy development on the management of the historic environment.
Historic Environment Policy Statement (HES, 2016)	Document to which planning authorities are directed in their consideration of applications for conservation area consent, listed building consent for buildings of all three categories and their consideration of planning applications affecting the historic environment and the setting of individual elements of the historic environment.	<ul style="list-style-type: none"> ➤ Landscape and Cultural heritage 	Where relevant to the priorities identified, the proposals in the NPPP should follow the guidance for policy development on the management of the historic environment.
Land Use Strategy for Scotland 2016 – 2021 (Scottish Government, 2016)	Outlines strategy for achieving sustainable land use across Scotland and getting the best from the land of Scotland.	All Topics	Where relevant to the priorities identified, the proposals in the NPPP could provide more specific direction on the National Land Use Strategy and can be implemented at a regional

Relevant PPS	Relevant objectives/purpose	SEA Topic	Relationship between the PPS and the NPPP
			level.
Managing Change in the Historic Environment Guidance Notes (HES, various)	Series of guidance notes which are designed to support the Scottish Historic Environment Policy (SHEP) and Scottish Planning Policy.	➤ Landscape and Cultural heritage	Where relevant to the priorities identified, the proposals in the NPPP should support positive management of the historic environment.
National Planning Framework 3 (Scottish Government, 2014)	A long term strategy for Scotland that provides the spatial expression of the Government's Economic Strategy and plans for the development and investment in infrastructure.	All Topics	Where relevant to the priorities identified, the proposals in the NPPP should support the strategic context set by NPF3 for future regional change around the Park.
Control of Woodland Removal Policy (Scottish Government, 2009)	Sets out Scottish Ministers policy on woodland removal in Scotland.	<ul style="list-style-type: none"> ➤ Climatic Factors ➤ Water ➤ Soil and geodiversity ➤ Biodiversity, Flora and Fauna ➤ Landscape and Cultural Heritage 	Where relevant to the priorities identified, the proposals in the NPPP should support the policy
The River Basin Management Plan for the Scotland River Basin District: 2015–2027 (SEPA, 2015)	Fulfils a requirement under the Water Environment and Water Services (Scotland) Act 2003.	<ul style="list-style-type: none"> ➤ Water ➤ Soil and geodiversity ➤ Biodiversity, Flora and Fauna 	Where relevant to the priorities identified, the proposals in the NPPP should support management objectives for water bodies in the National Park.

Relevant PPS	Relevant objectives/purpose	SEA Topic	Relationship between the PPS and the NPPP
Scotland Rural Development Programme 2014 – 2020 (Scottish Government, 2014)	Sets goals for sustainable rural development and the types of support available.	All Topics	Where relevant to the priorities identified, the proposals in the NPPP could provide direction on how rural development and diversification should be supported in the Park.
Scotland's Climate Change Adaptation Framework (Scottish Government, 2009)	The framework plays a central role in building Scotland's resilience to the changing climate, by setting the strategic direction for Scottish Government actions and providing specific actions for different sectors	<ul style="list-style-type: none"> ➤ Climatic factors ➤ Population and Human health 	Where relevant to the priorities identified, the proposals in the NPPP should support and include climate change adaptation and mitigation measures.
Scotland's Economic Strategy (Scottish Government, 2015)	Reaffirms the Scottish Government's commitment to creating a more successful country, with opportunities for all of Scotland to flourish, through increasing sustainable economic growth.	<ul style="list-style-type: none"> ➤ Material assets ➤ Population and Human Health 	Where relevant to the priorities identified, the proposals in the NPPP should encourage economic development that does not adversely affect the special qualities of the Park.
Scotland's National Transport Strategy (Transport Scotland, 2006)	Scottish Government's National Strategy for reducing transport emissions by 80%.	<ul style="list-style-type: none"> ➤ Climatic Factors ➤ Air ➤ Population and Human health 	Where relevant to the priorities identified, the proposals in the NPPP should support reductions in emissions from transport.
Scottish Biodiversity Strategy (Scottish Government, 2004 / 2013)	Comprises of two documents: <ul style="list-style-type: none"> • Scotland's Biodiversity – It's in Your Hands. A strategy for the conservation and enhancement of biodiversity in Scotland (2004) • 2020 Challenge for Scotland's Biodiversity - A Strategy for the conservation and enhancement of biodiversity in Scotland (2013) 	<ul style="list-style-type: none"> ➤ Water ➤ Biodiversity, Flora and Fauna ➤ Landscape and Cultural Heritage 	Where relevant to the priorities identified, the proposals in the NPPP should reflect the purpose of the Strategy through support for the Cairngorms Nature Action Plan 2013 - 2018.

Relevant PPS	Relevant objectives/purpose	SEA Topic	Relationship between the PPS and the NPPP
	Identifies Scottish biodiversity priorities and lead partners for taking action.		
Scottish Forestry Strategy (Scottish Government, 2019)	Outlines strategic priorities for forestry including management, planting and environmental stewardship.	<ul style="list-style-type: none"> ➤ Air ➤ Water ➤ Soil and geodiversity ➤ Biodiversity, Flora and Fauna ➤ Landscape and Cultural Heritage 	Where relevant to the priorities identified, the proposals in the NPPP should provide a strategic direction for forestry policy within the National Park.
Scottish Geodiversity Charter 2018-2023 (Scottish Geodiversity Forum, 2018)	Charter sets out why geodiversity is important, and presents a vision that geodiversity is recognised as an integral and vital part of our environment, economy, heritage and future sustainability to be safeguarded for existing and future generations in Scotland.	<ul style="list-style-type: none"> ➤ Soil and geodiversity ➤ Biodiversity, Flora and Fauna ➤ Landscape and Cultural Heritage 	The CNPA is a signatory to the Charter and therefore, where relevant to the priorities identified, the proposals in the NPPP should include actions to help meet its objectives.
Scottish Government's Infrastructure Investment Plan (Scottish Government, 2015)	Gives an overview of the Scottish Government's plans for infrastructure investment over the coming decades.	<ul style="list-style-type: none"> ➤ Material Assets ➤ Population and Human health 	Where relevant to the priorities identified, the proposals in the NPPP should take account of potential impacts (both positive and negative) of actions on existing and planned developments.
Scottish Government's	As part of the National Performance Framework, Scottish	All Topics	Where relevant to the priorities

Relevant PPS	Relevant objectives/purpose	SEA Topic	Relationship between the PPS and the NPPP
National Performance Framework, National Outcomes (Scottish Government, undated)	Government have set 15 National Outcomes that the public sector must collectively deliver, on children and young people, economy, fair work and business, international, communities, education, health, poverty, culture, environment, human rights.		identified, the proposals in the NPPP should identify and contribute to delivery of the outcomes that are most appropriate in the Park.
Scottish Planning Policy (Scottish Government, 2014)	National planning policy and guidance.	All Topics	Where relevant to the priorities identified, the proposals in the NPPP should the requirements set out within Scottish Planning Policy.
Scottish Soil Framework (Scottish Government, 2009)	Ministers policies and objectives for the conservation and use of soils.	All Topics	Where relevant to the priorities identified, the proposals in the NPPP should promote soil conservation.
Scottish Water Business Plan 2015 – 2021 (Scottish Water, 2015)	The business plan sets out how Scottish Water will deliver improvements to drinking water quality, the environment and customer service required by Scottish Ministers.	<ul style="list-style-type: none"> ➤ Water ➤ Population and Human health 	Where relevant to the priorities identified, the proposals in the NPPP should be developed with regard to the objectives and actions proposed in the Business Plan.
Scottish Zero Waste Plan (Scottish Government, 2010)	Provides context for waste planning in Scotland by sets the strategic direction for waste policy for Scotland, with a target of 70% recycling and maximum 5% to landfill by 2025 for all Scotland's waste.	<ul style="list-style-type: none"> ➤ Climatic Factors ➤ Soil and geodiversity ➤ Material assets ➤ Population and Human health 	Where relevant to the priorities identified, the proposals in the NPPP support waste management and good design.
Tourism Scotland 2020 (HIE, 2012)	The strategy targets those markets that offer Scotland the greatest growth potential, provides collaboration within and across Scotland's tourism destinations and develops the	<ul style="list-style-type: none"> ➤ Landscape and Cultural Heritage 	Where relevant to the priorities identified, the proposals in the NPPP should support development of

Relevant PPS	Relevant objectives/purpose	SEA Topic	Relationship between the PPS and the NPPP
	authentic memorable experiences tourists seek.	<ul style="list-style-type: none"> ➤ Population and Human health 	sustainable tourism to contribute to national targets for tourism growth.
UK Geodiversity Action Plan (UK GAP, 2011)	The Action Plan provides a framework in which actions for geodiversity can be captured in one place, allowing a range of organisations, groups and individuals to demonstrate their achievements in a UK-wide context	<ul style="list-style-type: none"> ➤ Soil and geodiversity ➤ Biodiversity, Flora and Fauna ➤ Landscape and Cultural Heritage 	Where relevant to the priorities identified, the proposals in the NPPP should include actions to help promote and protect the National Park's geodiversity.
UK Post-2010 Biodiversity Framework (JNCC/Defra, 2012)	The Framework sets out the common purpose and shared priorities of the UK and Scotland for the management of the environment as a whole.	<ul style="list-style-type: none"> ➤ Water ➤ Biodiversity, Flora and Fauna ➤ Landscape and Cultural Heritage 	Where relevant to the priorities identified, the proposals in the NPPP should reflect the purpose of the Framework through support for the Cairngorms Nature Action Plan 2013 - 2018.
Local Plans and Strategies			
A9 Dualling Strategy (Transport Scotland)	The project involves the upgrade of 80 miles of single carriageway along the A9 between Perth and Inverness by 2025.	All Topics	The plan will need to consider the effects of the dualling on the aims of the National Park and how this will influence the proposals in the NPPP.
Cairngorms National Park Capercaillie Framework (CNPA, 2015) (and subsequent Cairngorms	The Framework provides a set of working data, analysis and recommendations that will inform implementation across a wide spectrum of work, from habitat and species management, to recreation management and development	<ul style="list-style-type: none"> ➤ Biodiversity, Flora and Fauna 	Where relevant to the priorities identified, the proposals in the NPPP should support the aims of the Framework and ensure that

Relevant PPS	Relevant objectives/purpose	SEA Topic	Relationship between the PPS and the NPPP
Capercaillie Project)	planning. The Cairngorms Capercaillie Project will deliver the recommendations of the Capercaillie Framework		capercaillie and their habitat are not adversely affected.
Cairngorms National Park Core Paths Plan (CNPA, 2015)	Identifies a network of core paths throughout the National Park.	<ul style="list-style-type: none"> ➤ Biodiversity, Flora and Fauna ➤ Population and Human health 	Where relevant to the priorities identified, the proposals in the NPPP should support the promotion and development of core paths.
Cairngorms Forest Strategy (CNPA, 2018)	The Forest Strategy provides future direction for the management of existing forests and guidance on creating new woodlands that enhance the Cairngorms National Park and support its four aims.	<ul style="list-style-type: none"> ➤ All Topics 	Where relevant to the priorities identified, the proposals in the NPPP should support the aims of the Strategy and ensure that forests and woodlands are not adversely affected.
Cairngorms National Park Economic Strategy 2015-2018 (CNPA, 2015)	The purpose of the Strategy for the Cairngorms National Park is to identify the priorities that are specifically relevant to the area and to ensure that partners are working together to address them.	<ul style="list-style-type: none"> ➤ Population and Human Health 	Where relevant to the priorities identified, the proposals in the NPPP should support the National Park's aim to promote sustainable economic and social development of the area's communities.
Cairngorms National Park Gaelic Language Plan (CNPA, 2018)	A plan that aims to enhance the Gaelic Language and culture within the National Park.	<ul style="list-style-type: none"> ➤ Landscape and Cultural Heritage ➤ Population and Human health 	Where relevant to the priorities identified, the proposals in the NPPP should support the aims of the Language Plan.
Cairngorms National Park Local Development Plan 2015	Establishes development and settlement strategy for the Park, allocates specific development sites, and provides policies for managing development in the Park.	All Topics	Where relevant to the priorities identified, the proposals in the NPPP will need to take account of the LDP contents.

Relevant PPS	Relevant objectives/purpose	SEA Topic	Relationship between the PPS and the NPPP
Cairngorms National Park proposed Local Development Plan 2020	Currently at examination, the proposed LDP will establish a new development and settlement strategy for the Park, allocates specific development sites, and provides policies for managing development in the Park.	All Topics	Where relevant to the priorities identified, the proposals in the NPPP, the plan will need to take account of the proposed Plan contents.
Cairngorms Nature Action Plan (CNPA, 2018)	Priorities and actions for biodiversity in the National Park.	<ul style="list-style-type: none"> ➤ Water ➤ Biodiversity, Flora and Fauna ➤ Landscape and Cultural Heritage 	Where relevant to the priorities identified, the proposals in the NPPP should support the implementation and review of Cairngorms Action Plan
Active Cairngorms (CNPA, 2015)	Provides a framework for managing outdoor access in the Park.	<ul style="list-style-type: none"> ➤ Biodiversity, Flora and Fauna ➤ Landscape and Cultural Heritage ➤ Population and Human health 	Where relevant to the priorities identified, the proposals in the NPPP can support and promote responsible outdoor access.
Community Visions and Local Community Action or development plans	Statements from communities in the Park about how they would like to change or develop in future, sometimes with plans on how to get there.	<ul style="list-style-type: none"> ➤ Biodiversity, Flora and Fauna ➤ Landscape and Cultural heritage ➤ Population and Human health 	Where relevant to the priorities identified, the proposals in the NPPP should support communities in developing their own plans and capacity.

Relevant PPS	Relevant objectives/purpose	SEA Topic	Relationship between the PPS and the NPPP
Local Outcome Improvement Plans (LOIPs) (prepared by Community Planning Partners in each of the 5 Local Authority areas overlapping with the Park)	Strategic documents outlining (usually socio-economic) priorities for communities. Community Planning Partners include local public services such as councils, NHS boards, police and fire services, and other public bodies. They work together to improve the way that local services are planned, co-ordinated and carried out.	All Topics	Where relevant to the priorities identified, the proposals in the NPPP should help deliver priorities to address inequalities and issues in communities.
Local Housing Strategies (prepared by Local Authorities as housing authorities for each council area)	Required by the Housing (Scotland) Act 2001. Sets out how housing authorities will provide for housing needs and demands in their area.	➤ Population and Human health	Where relevant to the priorities identified, the proposals in the NPPP should support housing delivery.
Regional and Local Transport Strategies (prepared by Local Authorities)	Set out how to maintain and improve infrastructure.	➤ Climatic Factors ➤ Air ➤ Population and Human health	Plan should support sustainable transport solutions and encourage lower carbon forms of transport.
River Dee Catchment Management Plan (Dee Catchment Partnership, 2007)	Aims to promote sustainable use of natural resources, to improve water quality and biodiversity within the river catchment.	➤ Water ➤ Soil and geodiversity ➤ Biodiversity, Flora and Fauna ➤ Landscape and Cultural heritage	Where relevant to the priorities identified, the proposals in the NPPP should support integrated catchment management as a way of improving water quality and the health of natural systems.
River Spey Catchment Management Plan (Spey Catchment Initiative, 2016)	Aims to promote sustainable use of natural resources, to improve water quality and biodiversity within the river catchment.	➤ Water ➤ Soil and geodiversity	Where relevant to the priorities identified, the proposals in the NPPP should support integrated catchment

Relevant PPS	Relevant objectives/purpose	SEA Topic	Relationship between the PPS and the NPPP
		<ul style="list-style-type: none"> ➤ Biodiversity, Flora and Fauna ➤ Landscape and Cultural Heritage 	management as a way of improving water quality and the health of natural systems.
South Esk Catchment Management Plan (River South Esk Catchment Partnership, 2009)	Aims to promote sustainable use of natural resources, to improve water quality and biodiversity within the river catchment.	<ul style="list-style-type: none"> ➤ Water ➤ Soil and geodiversity ➤ Biodiversity, Flora and Fauna ➤ Landscape and Cultural Heritage 	Where relevant to the priorities identified, the proposals in the NPPP should support integrated catchment management as a way of improving water quality and the health of natural systems.
Tourism: Action + Change: Tourism Action Plan for the Cairngorms National Park 2017-2022 (CNPA, 2017)	Developed by the Cairngorms Tourism Partnership, which brings together the key businesses and agencies involved in tourism, the Action Plan sets out the priority actions over the next five years to deliver sustainable tourism in the Cairngorms National Park in line with the Europarc Federation of Protected Areas Charter.	<ul style="list-style-type: none"> ➤ Air ➤ Water ➤ Material assets ➤ Biodiversity, Flora and Fauna ➤ Landscape and Cultural Heritage 	Where relevant to the priorities identified, the proposals in the NPPP should support the implementation of the Sustainable Tourism Strategy.

Annex II: Baseline environmental data

Please see the separate Topic papers.

Annex III: Data analysis information

Population and Demographics

The population and demographic information contained in the environmental baseline Topic papers is mostly based on data zones aggregated to a larger geographical area, which roughly corresponds with the area of the Park.

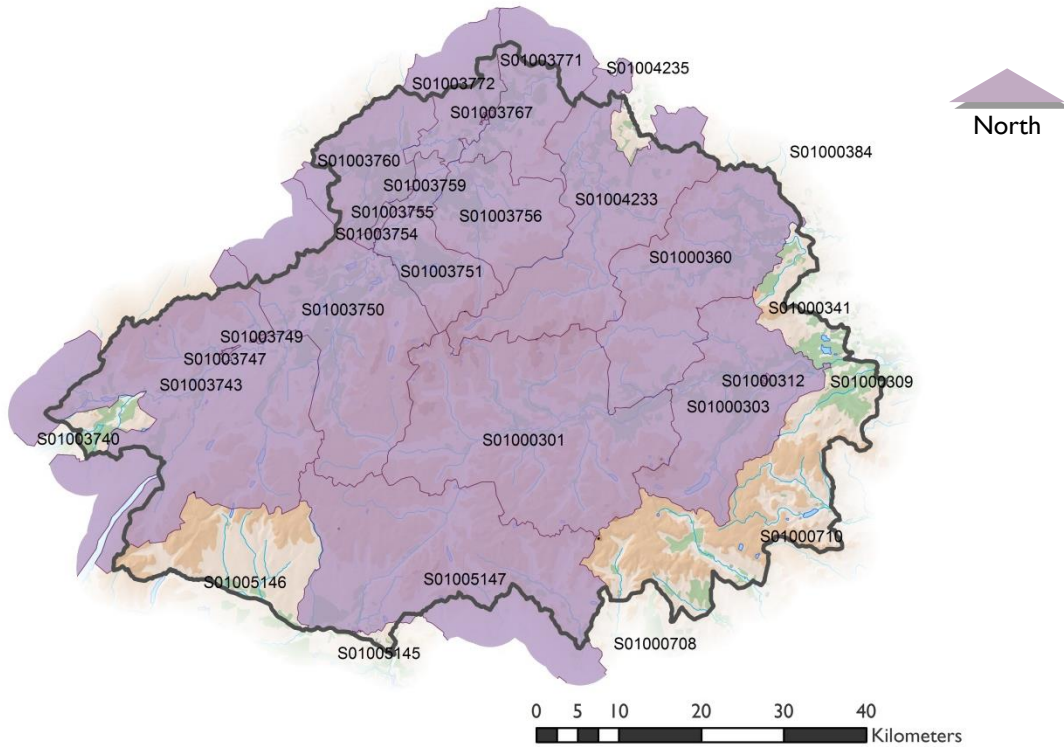
Data zones are the standard small area geography used by the Scottish Government. In general they have populations of between 500 and 1,000 residents. Data zone boundaries do not exactly match the Park boundary and so, for the purpose of analysis, data zones are included or excluded based on the 'population weighted centroid'. This is a standard procedure for assigning the population of a small geography to a large geography if the former does not wholly fit within the boundaries of the latter or lies across the border of two large geographies. This is the methodology used in National Records of Scotland's (NRS) population projections for National Parks and Strategic Development Plan Areas (<https://www2.gov.scot/Topics/Statistics/sns/SNSRef>). For the sake of transparency and consistency, the same approach has been applied to all relevant data-sets within the Topic papers, particularly Topic 8, Population and human health.

It should be noted that the NRS has not in the past included data zone S01005147 / S01011981 within its projections. It is assumed that this is because the data zone, which is entirely within Perth and Kinross, only became part of the National Park with the boundary change in 2010. The population weighted centroid is however within the Park and therefore the data zone has been included within the CNPA analyses of the demographic and socio-economic character of the Park.

The population weighted centroid is essentially the point in the area where population density is the same all around the point, or put more simply, the population 'centre of gravity' of the area. A data zone has been allocated to the Park area if the population weighted centroid lies within it.

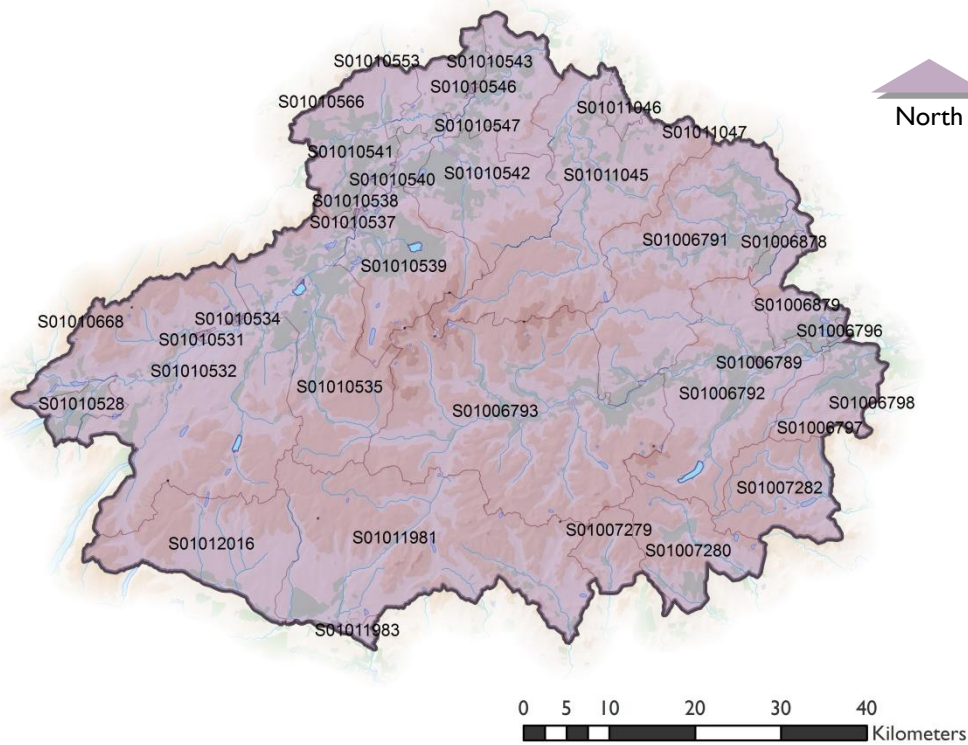
The data zones shown in table 4, figure 3 and figure 4 have been chosen to represent the Park.

It should be noted that the Scottish Government published revised 2011 Data Zones on 6 November 2014. These geographies replace the original 2001 boundaries used in the NRS population projections. At a Park level the changes are very minor, with the 2011 data zone boundaries corresponding closely with those of the 2001 ones. This however means that both 2001 and 2011 data zones are used in the environmental baseline Topic papers.



Reproduced by permission of Ordnance Survey on behalf of HMSO. © Crown copyright and database right 2015. All rights reserved. Ordnance Survey Licence number 100040965 Cairngorms National Park Authority.

Figure 3 – 2001 datazones for the Park



Reproduced by permission of Ordnance Survey on behalf of HMSO. © Crown copyright and database right 2015. All rights reserved. Ordnance Survey Licence number 100040965 Cairngorms National Park Authority.

Figure 4 – 2011 datazones for the Park

Table 4 - corresponding 2001 and 2011 data zones used as an aggregate for the Park

Highland		Aberdeenshire	
2001	2011	2001	2011
S01003743	S01010532	S01000301	S01006793
S01003747	S01010531	S01000303	S01006792
S01003748	S01010533	S01000312	S01006789
S01003749	S01010534	S01000316	S01006790
S01003750	S01010535	S01000360	S01006791
S01003751	S01010539	Moray	
S01003754	S01010536	2001	2011
S01003755	S01010538 & S01010537	S01004233	S01011045
S01003756	S01010542	Perth and Kinross	
S01003759	S01010540	2001	2011
S01003760	S01010541	S01005147	S01011981
S01003764	S01010544		
S01003766	S01010545		
S01003767	S01010546		
S01003771	S01010547		
S01003772	S01010543		

The Park boundary does not coincide with the data zone boundary around Boultenstone and Dinnet to the east, Glen Clova to the south west, Glenlivet to the north east, and the area east of Loch Laggan. Consequently, these areas are omitted, with the omission of the area around Glen Clova meaning that no part of the Angus Council area is included in the data zone boundary.

More detailed maps that show the location of population weighted centroids are available within the Scottish Neighbourhood Statistics - Boundary Mapping section of <https://www2.gov.scot/Topics/Statistics/sns/BoundMap>.

A paper describing the methodology for calculating data zone centroids can be found on the Scottish Neighbourhood Statistics - Reference Material page <https://www2.gov.scot/Topics/Statistics/sns/SNSRef>.

Waterbodies

SEPA are the responsible authority for monitoring water quality in Scotland to the requirements set out by the WFD. The Directive requires all water features in a category (rivers, lochs, transitional waters, coastal waters and groundwater) above a certain size threshold to be defined as waterbodies. For Scotland, this was carried out using a combination of typology data and data on ecosystem health (from both SEPA data and consultation with external stakeholders). Waterbodies are by definition of the same typology and overall quality along their length.

By their nature, waterbodies do not exactly match the Park boundary. It is also clear that factors affecting a waterbody in the upper part of a catchment area may also affect other waterbodies in its lower part. Therefore, a judgment as to the waterbodies to include in the baseline for the National Park must be made. For the purpose of this analysis, all waterbodies located within or overlapping the National Park Boundary have been selected.

Annex IV: Protected area condition data

Data correct at time of download from Scottish Environment Web on 7 October 2019. Data will be checked and updated where required during the environmental assessment process to ensure it remains up to date.

Site Name	Type	Feature Name	Feature Category	Summary Condition	Pressure
Cairngorm Lochs	Ramsar	Oligotrophic loch	Freshwater habitats	Favourable	Other
Cairngorm Lochs	Ramsar	Oligotrophic loch	Freshwater habitats	Favourable	Water management
Muir of Dinnet	Ramsar	Breeding bird assemblage	Birds	Favourable	None
Muir of Dinnet	Ramsar	Dragonfly assemblage	Invertebrates	Favourable	None
Muir of Dinnet	Ramsar	Hydromorphological mire range	Wetlands	Favourable	Invasive species
Muir of Dinnet	Ramsar	Greylag goose (<i>Anser anser</i>), non-breeding	Birds	Unfavourable	Not identified
River Spey - Insh Marshes	Ramsar	Flood-plain fen	Wetlands	Favourable	Over grazing
River Spey - Insh Marshes	Ramsar	Flood-plain fen	Wetlands	Favourable	Trampling
River Spey - Insh Marshes	Ramsar	Mesotrophic loch	Freshwater habitats	Favourable	Invasive species
River Spey - Insh Marshes	Ramsar	Mesotrophic loch	Freshwater habitats	Favourable	Recreation/disturbance
River Spey - Insh Marshes	Ramsar	Trophic range river/stream	Freshwater habitats	Unfavourable	Water management
River Spey - Insh Marshes	Ramsar	Whooper swan (<i>Cygnus cygnus</i>), non-breeding	Birds	Favourable	Recreation/disturbance
Ballochbuie	SAC	Blanket bog	Upland habitat	Recovering	Burning
Ballochbuie	SAC	Bog woodland	Woodland	Recovering	Over grazing

Ballochbuie	SAC	Caledonian forest	Woodland	Recovering	Over grazing
Ballochbuie	SAC	Dry heaths	Upland habitat	Recovering	Burning
Ballochbuie	SAC	Wet heathland with cross-leaved heath	Upland habitat	Recovering	Burning
Beinn a' Ghlo	SAC	Base-rich fens	Upland habitat	Favourable	Proactive on-site management
Beinn a' Ghlo	SAC	Blanket bog	Upland habitat	Favourable	Burning
Beinn a' Ghlo	SAC	Dry heaths	Upland habitat	Recovering	Burning
Beinn a' Ghlo	SAC	Dry heaths	Upland habitat	Recovering	Over grazing
Beinn a' Ghlo	SAC	Hard-water springs depositing lime	Upland habitat	Favourable	Burning
Beinn a' Ghlo	SAC	Hard-water springs depositing lime	Upland habitat	Favourable	Over grazing
Beinn a' Ghlo	SAC	Hard-water springs depositing lime	Upland habitat	Favourable	Recreation/disturbance
Caenlochan	SAC	Acidic scree	Upland habitat	Unfavourable	Over grazing
Caenlochan	SAC	Alpine and subalpine heaths	Upland habitat	Unfavourable	Climate Change
Caenlochan	SAC	Alpine and subalpine heaths	Upland habitat	Unfavourable	Over grazing
Caenlochan	SAC	Blanket bog	Upland habitat	Unfavourable	Burning
Caenlochan	SAC	Blanket bog	Upland habitat	Unfavourable	Over grazing
Caenlochan	SAC	Dry heaths	Upland habitat	Unfavourable	Burning
Caenlochan	SAC	Dry heaths	Upland habitat	Unfavourable	Over grazing
Caenlochan	SAC	Montane acid grasslands	Upland habitat	Unfavourable	Climate Change
Caenlochan	SAC	Montane acid grasslands	Upland habitat	Unfavourable	Over grazing
Caenlochan	SAC	Mountain willow scrub	Upland habitat	Unfavourable	Climate Change
Caenlochan	SAC	Mountain willow scrub	Upland habitat	Unfavourable	Over grazing
Caenlochan	SAC	Mountain willow scrub	Upland habitat	Unfavourable	Plant pests and diseases
Cairngorms	SAC	Alpine and subalpine heaths	Upland habitat	Unfavourable	Burning
Cairngorms	SAC	Alpine and subalpine heaths	Upland habitat	Unfavourable	Over grazing

Cairngorms	SAC	Alpine and subalpine heaths	Upland habitat	Unfavourable	Recreation/disturbance
Cairngorms	SAC	Blanket bog	Upland habitat	Unfavourable	Over grazing
Cairngorms	SAC	Bog woodland	Woodland	Favourable	Over grazing
Cairngorms	SAC	Caledonian forest	Woodland	Unfavourable	Invasive species
Cairngorms	SAC	Caledonian forest	Woodland	Unfavourable	Under grazing
Cairngorms	SAC	Dry grasslands and scrublands on chalk or limestone	Upland habitat	Unfavourable	Over grazing
Cairngorms	SAC	Dry grasslands and scrublands on chalk or limestone	Upland habitat	Unfavourable	Under grazing
Cairngorms	SAC	Dry heaths	Upland habitat	Unfavourable	Burning
Cairngorms	SAC	Green shield-moss (<i>Buxbaumia viridis</i>)	Non-vascular plants	Favourable	Forestry operations
Cairngorms	SAC	Hard-water springs depositing lime	Upland habitat	Favourable	Grazing - other
Cairngorms	SAC	High-altitude plant communities associated with areas of water seepage	Upland habitat	Unfavourable	Over grazing
Cairngorms	SAC	High-altitude plant communities associated with areas of water seepage	Upland habitat	Unfavourable	Trampling
Cairngorms	SAC	Montane acid grasslands	Upland habitat	Favourable	Recreation/disturbance
Cairngorms	SAC	Mountain willow scrub	Upland habitat	Unfavourable	Over grazing
Cairngorms	SAC	Otter (<i>Lutra lutra</i>)	Mammals (except marine)	Unfavourable	Recreation/disturbance
Cairngorms	SAC	Plants in crevices on acid rocks	Upland habitat	Favourable	Recreation/disturbance
Cairngorms	SAC	Plants in crevices on base-rich rocks	Upland habitat	Unfavourable	Invasive species
Cairngorms	SAC	Species-rich grassland with mat-grass in upland areas	Upland habitat	Unfavourable	Other
Cairngorms	SAC	Species-rich grassland with mat-grass in upland areas	Upland habitat	Unfavourable	Trampling
Cairngorms	SAC	Species-rich grassland with mat-grass in upland areas	Upland habitat	Unfavourable	Under grazing
Cairngorms	SAC	Wet heathland with cross-leaved heath	Upland habitat	Unfavourable	Over grazing
Creag Meagaidh	SAC	Blanket bog	Upland habitat	Unfavourable	Burning

Creag Meagaidh	SAC	Blanket bog	Upland habitat	Unfavourable	Over grazing
Creag Meagaidh	SAC	Dry heaths	Upland habitat	Unfavourable	Burning
Creag Meagaidh	SAC	Dry heaths	Upland habitat	Unfavourable	Over grazing
Creag Meagaidh	SAC	Montane acid grasslands	Upland habitat	Favourable	Trampling
Creag Meagaidh	SAC	Mountain willow scrub	Upland habitat	Recovering	Over grazing
Creag Meagaidh	SAC	Wet heathland with cross-leaved heath	Upland habitat	Unfavourable	Burning
Creag Meagaidh	SAC	Wet heathland with cross-leaved heath	Upland habitat	Unfavourable	Game/ fisheries management
Creag Meagaidh	SAC	Wet heathland with cross-leaved heath	Upland habitat	Unfavourable	Over grazing
Creag nan Gamhainn	SAC	Hard-water springs depositing lime	Upland habitat	Favourable	Trampling
Dinnet Oakwood	SAC	Western acidic oak woodland	Woodland	Favourable	Invasive species
Dinnet Oakwood	SAC	Western acidic oak woodland	Woodland	Favourable	No proactive management
Dinnet Oakwood	SAC	Western acidic oak woodland	Woodland	Favourable	Over grazing
Drumochter Hills	SAC	Alpine and subalpine heaths	Upland habitat	Unfavourable	Over grazing
Drumochter Hills	SAC	Alpine and subalpine heaths	Upland habitat	Unfavourable	Trampling
Drumochter Hills	SAC	Blanket bog	Upland habitat	Unfavourable	Over grazing
Drumochter Hills	SAC	Blanket bog	Upland habitat	Unfavourable	Trampling
Drumochter Hills	SAC	Dry heaths	Upland habitat	Unfavourable	Burning
Drumochter Hills	SAC	Dry heaths	Upland habitat	Unfavourable	Game/ fisheries management
Drumochter Hills	SAC	Montane acid grasslands	Upland habitat	Favourable	Over grazing
Drumochter Hills	SAC	Montane acid grasslands	Upland habitat	Favourable	Trampling
Drumochter Hills	SAC	Mountain willow scrub	Upland habitat	Unfavourable	Over grazing
Drumochter Hills	SAC	Plants in crevices on acid rocks	Upland habitat	Favourable	Over grazing

Drumochter Hills	SAC	Species-rich grassland with mat-grass in upland areas	Upland habitat	Unfavourable	Under grazing
Drumochter Hills	SAC	Wet heathland with cross-leaved heath	Upland habitat	Unfavourable	Burning
Drumochter Hills	SAC	Wet heathland with cross-leaved heath	Upland habitat	Unfavourable	Over grazing
Drumochter Hills	SAC	Wet heathland with cross-leaved heath	Upland habitat	Unfavourable	Trampling
Glen Tanar	SAC	Blanket bog	Upland habitat	Unfavourable	Water management
Green Hill of Strathdon	SAC	Dry heaths	Upland habitat	Favourable	Burning
Green Hill of Strathdon	SAC	Dry heaths	Upland habitat	Favourable	Grazing - other
Green Hill of Strathdon	SAC	Grasslands on soils rich in heavy metals	Upland habitat	Favourable	Burning
Green Hill of Strathdon	SAC	Juniper on heaths or calcareous grasslands	Upland habitat	Favourable	Natural event
Green Hill of Strathdon	SAC	Juniper on heaths or calcareous grasslands	Upland habitat	Favourable	Over grazing
Insh Marshes	SAC	Alder woodland on floodplains	Woodland	Favourable	Flood defence/coastal defence works
Insh Marshes	SAC	Alder woodland on floodplains	Woodland	Favourable	Invasive species
Insh Marshes	SAC	Alder woodland on floodplains	Woodland	Favourable	No proactive management
Insh Marshes	SAC	Alder woodland on floodplains	Woodland	Favourable	Over grazing
Insh Marshes	SAC	Alder woodland on floodplains	Woodland	Favourable	Water management
Insh Marshes	SAC	Clear-water lakes or lochs with aquatic vegetation and poor to moderate nutrient levels	Freshwater habitats	Favourable	Invasive species
Insh Marshes	SAC	Clear-water lakes or lochs with aquatic vegetation and poor to moderate nutrient levels	Freshwater habitats	Favourable	Recreation/disturbance
Insh Marshes	SAC	Otter (<i>Lutra lutra</i>)	Mammals (except marine)	Favourable	Other
Insh Marshes	SAC	Otter (<i>Lutra lutra</i>)	Mammals (except marine)	Favourable	Over grazing
Ladder Hills	SAC	Blanket bog	Upland habitat	Favourable	Agricultural operations

Ladder Hills	SAC	Blanket bog	Upland habitat	Favourable	Burning
Ladder Hills	SAC	Dry heaths	Upland habitat	Unfavourable	Burning
Monadhliath	SAC	Blanket bog	Upland habitat	Unfavourable	Trampling
Morrone Birkwood	SAC	Alpine and subalpine heaths	Upland habitat	Favourable	Over grazing
Morrone Birkwood	SAC	Alpine and subalpine heaths	Upland habitat	Favourable	Recreation/disturbance
Morrone Birkwood	SAC	Base-rich fens	Upland habitat	Favourable	Trampling
Morrone Birkwood	SAC	Hard-water springs depositing lime	Upland habitat	Favourable	Invasive species
Morrone Birkwood	SAC	Hard-water springs depositing lime	Upland habitat	Favourable	Over grazing
Morrone Birkwood	SAC	High-altitude plant communities associated with areas of water seepage	Upland habitat	Favourable	Invasive species
Morrone Birkwood	SAC	High-altitude plant communities associated with areas of water seepage	Upland habitat	Favourable	Trampling
Morrone Birkwood	SAC	Juniper on heaths or calcareous grasslands	Upland habitat	Recovering	Over grazing
Morven and Mullachdubh	SAC	Juniper on heaths or calcareous grasslands	Upland habitat	Favourable	Burning
Morven and Mullachdubh	SAC	Juniper on heaths or calcareous grasslands	Upland habitat	Favourable	No proactive management
Morven and Mullachdubh	SAC	Juniper on heaths or calcareous grasslands	Upland habitat	Favourable	Over grazing
Morven and Mullachdubh	SAC	Juniper on heaths or calcareous grasslands	Upland habitat	Favourable	Plant pests and diseases
Muir of Dinnet	SAC	Clear-water lakes or lochs with aquatic vegetation and poor to moderate nutrient levels	Freshwater habitats	Favourable	Invasive species
Muir of Dinnet	SAC	Clear-water lakes or lochs with aquatic vegetation and poor to moderate nutrient levels	Freshwater habitats	Favourable	Water quality
Muir of Dinnet	SAC	Degraded raised bog	Wetlands	Favourable	Agricultural operations
Muir of Dinnet	SAC	Degraded raised bog	Wetlands	Favourable	Invasive species

Muir of Dinnet	SAC	Dry heaths	Upland habitat	Recovering	No proactive management
Muir of Dinnet	SAC	Otter (<i>Lutra lutra</i>)	Mammals (except marine)	Favourable	Natural event
Muir of Dinnet	SAC	Otter (<i>Lutra lutra</i>)	Mammals (except marine)	Favourable	Water quality
Muir of Dinnet	SAC	Very wet mires often identified by an unstable 'quaking' surface	Upland habitat	Favourable	Invasive species
River Dee	SAC	Atlantic salmon (<i>Salmo salar</i>)	Fish	Favourable	Agricultural operations
River Dee	SAC	Atlantic salmon (<i>Salmo salar</i>)	Fish	Favourable	Invasive species
River Dee	SAC	Atlantic salmon (<i>Salmo salar</i>)	Fish	Favourable	Water management
River Dee	SAC	Atlantic salmon (<i>Salmo salar</i>)	Fish	Favourable	Water quality
River Dee	SAC	Freshwater pearl mussel (<i>Margaritifera margaritifera</i>)	Invertebrates	Unfavourable	Development
River Dee	SAC	Freshwater pearl mussel (<i>Margaritifera margaritifera</i>)	Invertebrates	Unfavourable	Invasive species
River Dee	SAC	Freshwater pearl mussel (<i>Margaritifera margaritifera</i>)	Invertebrates	Unfavourable	Other
River Dee	SAC	Freshwater pearl mussel (<i>Margaritifera margaritifera</i>)	Invertebrates	Unfavourable	To be identified
River Dee	SAC	Freshwater pearl mussel (<i>Margaritifera margaritifera</i>)	Invertebrates	Unfavourable	Water management
River South Esk	SAC	Atlantic salmon (<i>Salmo salar</i>)	Fish	Favourable	Agricultural operations
River South Esk	SAC	Atlantic salmon (<i>Salmo salar</i>)	Fish	Favourable	Climate Change
River South Esk	SAC	Atlantic salmon (<i>Salmo salar</i>)	Fish	Favourable	Forestry operations
River South Esk	SAC	Atlantic salmon (<i>Salmo salar</i>)	Fish	Favourable	Invasive species
River South Esk	SAC	Atlantic salmon (<i>Salmo salar</i>)	Fish	Favourable	Over grazing
River South Esk	SAC	Atlantic salmon (<i>Salmo salar</i>)	Fish	Favourable	Water management
River South Esk	SAC	Atlantic salmon (<i>Salmo salar</i>)	Fish	Favourable	Water quality
River South Esk	SAC	Freshwater pearl mussel (<i>Margaritifera margaritifera</i>)	Invertebrates	Unfavourable	Invasive species
River South Esk	SAC	Freshwater pearl mussel (<i>Margaritifera margaritifera</i>)	Invertebrates	Unfavourable	Water management

River South Esk	SAC	Freshwater pearl mussel (<i>Margaritifera margaritifera</i>)	Invertebrates	Unfavourable	Wildlife crime
River Spey	SAC	Atlantic salmon (<i>Salmo salar</i>)	Fish	Favourable	Agricultural operations
River Spey	SAC	Atlantic salmon (<i>Salmo salar</i>)	Fish	Favourable	Invasive species
River Spey	SAC	Atlantic salmon (<i>Salmo salar</i>)	Fish	Favourable	Water management
River Spey	SAC	Freshwater pearl mussel (<i>Margaritifera margaritifera</i>)	Invertebrates	Unfavourable	Extraction
River Spey	SAC	Freshwater pearl mussel (<i>Margaritifera margaritifera</i>)	Invertebrates	Unfavourable	Invasive species
River Spey	SAC	Freshwater pearl mussel (<i>Margaritifera margaritifera</i>)	Invertebrates	Unfavourable	Water quality
River Spey	SAC	Freshwater pearl mussel (<i>Margaritifera margaritifera</i>)	Invertebrates	Unfavourable	Wildlife crime
River Spey	SAC	Otter (<i>Lutra lutra</i>)	Mammals (except marine)	Favourable	Other
River Spey	SAC	Otter (<i>Lutra lutra</i>)	Mammals (except marine)	Favourable	Over grazing
River Tay	SAC	Atlantic salmon (<i>Salmo salar</i>)	Fish	Favourable	Extraction
River Tay	SAC	Atlantic salmon (<i>Salmo salar</i>)	Fish	Favourable	Game/ fisheries management
River Tay	SAC	Atlantic salmon (<i>Salmo salar</i>)	Fish	Favourable	Invasive species
River Tay	SAC	Atlantic salmon (<i>Salmo salar</i>)	Fish	Favourable	Water management
River Tay	SAC	Atlantic salmon (<i>Salmo salar</i>)	Fish	Favourable	Water quality
River Tay	SAC	Brook lamprey (<i>Lampetra planeri</i>)	Fish	Favourable	Development
River Tay	SAC	Brook lamprey (<i>Lampetra planeri</i>)	Fish	Favourable	Water management
River Tay	SAC	Brook lamprey (<i>Lampetra planeri</i>)	Fish	Favourable	Water quality
River Tay	SAC	Clear-water lakes or lochs with aquatic vegetation and poor to moderate nutrient levels	Freshwater habitats	Favourable	Water management
River Tay	SAC	Otter (<i>Lutra lutra</i>)	Mammals (except marine)	Favourable	Agricultural operations
River Tay	SAC	Otter (<i>Lutra lutra</i>)	Mammals	Favourable	Invasive species

			(except marine)		
River Tay	SAC	Otter (<i>Lutra lutra</i>)	Mammals (except marine)	Favourable	Recreation/disturbance
River Tay	SAC	Otter (<i>Lutra lutra</i>)	Mammals (except marine)	Favourable	Water management
River Tay	SAC	River lamprey (<i>Lampetra fluviatilis</i>)	Fish	Favourable	Development
River Tay	SAC	River lamprey (<i>Lampetra fluviatilis</i>)	Fish	Favourable	Water management
River Tay	SAC	River lamprey (<i>Lampetra fluviatilis</i>)	Fish	Favourable	Water quality
River Tay	SAC	Sea lamprey (<i>Petromyzon marinus</i>)	Fish	Favourable	Development
River Tay	SAC	Sea lamprey (<i>Petromyzon marinus</i>)	Fish	Favourable	Water management
River Tay	SAC	Sea lamprey (<i>Petromyzon marinus</i>)	Fish	Favourable	Water quality
Tulach Hill and Glen Fender Meadows	SAC	Dry grasslands and scrublands on chalk or limestone	Upland habitat	Favourable	Over grazing
Tulach Hill and Glen Fender Meadows	SAC	Dry heaths	Upland habitat	Favourable	Agricultural operations
Tulach Hill and Glen Fender Meadows	SAC	Dry heaths	Upland habitat	Favourable	Over grazing
Tulach Hill and Glen Fender Meadows	SAC	Dry heaths	Upland habitat	Favourable	Under grazing
Tulach Hill and Glen Fender Meadows	SAC	Geyer's whorl snail (<i>Vertigo geyeri</i>)	Invertebrates	Favourable	Invasive species
Tulach Hill and Glen Fender Meadows	SAC	Geyer's whorl snail (<i>Vertigo geyeri</i>)	Invertebrates	Favourable	Under grazing
Abernethy Forest	SPA	Capercaillie (<i>Tetrao urogallus</i>), breeding	Birds	Favourable	Under grazing
Abernethy Forest	SPA	Scottish crossbill (<i>Loxia scotica</i>), breeding	Birds	Favourable	Over grazing
Anagach Woods	SPA	Capercaillie (<i>Tetrao urogallus</i>), breeding	Birds	Unfavourable	Recreation/disturbance
Ballochbuie	SPA	Capercaillie (<i>Tetrao urogallus</i>), breeding	Birds	Unfavourable	Forestry operations

Ballochbuie	SPA	Capercaillie (<i>Tetrao urogallus</i>), breeding	Birds	Unfavourable	Natural event
Ballochbuie	SPA	Capercaillie (<i>Tetrao urogallus</i>), breeding	Birds	Unfavourable	Over grazing
Ballochbuie	SPA	Capercaillie (<i>Tetrao urogallus</i>), breeding	Birds	Unfavourable	Under grazing
Caenlochan	SPA	Golden eagle (<i>Aquila chrysaetos</i>), breeding	Birds	Favourable	Over grazing
Caenlochan	SPA	Golden eagle (<i>Aquila chrysaetos</i>), breeding	Birds	Favourable	Recreation/disturbance
Cairngorms	SPA	Dotterel (<i>Charadrius morinellus</i>), breeding	Birds	Unfavourable	Over grazing
Cairngorms	SPA	Dotterel (<i>Charadrius morinellus</i>), breeding	Birds	Unfavourable	Recreation/disturbance
Cairngorms	SPA	Golden eagle (<i>Aquila chrysaetos</i>), breeding	Birds	Favourable	Game/ fisheries management
Cairngorms	SPA	Peregrine (<i>Falco peregrinus</i>), breeding	Birds	Favourable	Recreation/disturbance
Cairngorms	SPA	Scottish crossbill (<i>Loxia scotica</i>), breeding	Birds	Favourable	Over grazing
Cairngorms Massif	SPA	Golden eagle (<i>Aquila chrysaetos</i>), breeding	Birds	Favourable	Proactive on-site management
Craigmore Wood	SPA	Capercaillie (<i>Tetrao urogallus</i>), breeding	Birds	Unfavourable	Other
Craigmore Wood	SPA	Capercaillie (<i>Tetrao urogallus</i>), breeding	Birds	Unfavourable	To be identified
Drumochter Hills	SPA	Dotterel (<i>Charadrius morinellus</i>), breeding	Birds	Unfavourable	Over grazing
Drumochter Hills	SPA	Dotterel (<i>Charadrius morinellus</i>), breeding	Birds	Unfavourable	Trampling
Drumochter Hills	SPA	Merlin (<i>Falco columbarius</i>), breeding	Birds	Unfavourable	Burning
Drumochter Hills	SPA	Merlin (<i>Falco columbarius</i>), breeding	Birds	Unfavourable	Over grazing
Forest of Clunie	SPA	Hen harrier (<i>Circus cyaneus</i>), breeding	Birds	Unfavourable	Burning
Forest of Clunie	SPA	Hen harrier (<i>Circus cyaneus</i>), breeding	Birds	Unfavourable	Natural event
Forest of Clunie	SPA	Hen harrier (<i>Circus cyaneus</i>), breeding	Birds	Unfavourable	Over grazing
Forest of Clunie	SPA	Merlin (<i>Falco columbarius</i>), breeding	Birds	Unfavourable	Burning
Forest of Clunie	SPA	Merlin (<i>Falco columbarius</i>), breeding	Birds	Unfavourable	Natural event
Forest of Clunie	SPA	Merlin (<i>Falco columbarius</i>), breeding	Birds	Unfavourable	Over grazing

Forest of Clunie	SPA	Short-eared owl (<i>Asio flammeus</i>), breeding	Birds	Unfavourable	Burning
Loch Vaa	SPA	Slavonian grebe (<i>Podiceps auritus</i>), breeding	Birds	Unfavourable	Natural event
Loch Vaa	SPA	Slavonian grebe (<i>Podiceps auritus</i>), breeding	Birds	Unfavourable	Recreation/disturbance
River Spey - Insh Marshes	SPA	Osprey (<i>Pandion haliaetus</i>), breeding	Birds	Favourable	Recreation/disturbance
River Spey - Insh Marshes	SPA	Wigeon (<i>Anas penelope</i>), breeding	Birds	Unfavourable	Natural event
River Spey - Insh Marshes	SPA	Wigeon (<i>Anas penelope</i>), breeding	Birds	Unfavourable	Recreation/disturbance
River Spey - Insh Marshes	SPA	Wood sandpiper (<i>Tringa glareola</i>), breeding	Birds	Recovering	Forestry operations
Abernethy Forest	SSSI	Beetle assemblage	Invertebrates	Favourable	Over grazing
Abernethy Forest	SSSI	Capercaillie (<i>Tetrao urogallus</i>), breeding	Birds	Favourable	Under grazing
Abernethy Forest	SSSI	Dragonfly assemblage	Invertebrates	Favourable	Forestry operations
Abernethy Forest	SSSI	Dragonfly assemblage	Invertebrates	Favourable	Natural event
Abernethy Forest	SSSI	Fluvial Geomorphology of Scotland	Earth sciences	Favourable	Dumping/ storage of materials
Abernethy Forest	SSSI	Fluvial Geomorphology of Scotland	Earth sciences	Favourable	Extraction
Abernethy Forest	SSSI	Fungi assemblage	Non-vascular plants	Favourable	Grazing - other
Abernethy Forest	SSSI	Fungi assemblage	Non-vascular plants	Favourable	Under grazing
Abernethy Forest	SSSI	Invertebrate assemblage	Invertebrates	Favourable	Trampling
Abernethy Forest	SSSI	Native pinewood	Woodland	Favourable	Game/ fisheries management
Abernethy Forest	SSSI	Osprey (<i>Pandion haliaetus</i>), breeding	Birds	Recovering	Other
Abernethy Forest	SSSI	Quaternary of Scotland	Earth sciences	Favourable	Climate Change

Abernethy Forest	SSSI	Quaternary of Scotland	Earth sciences	Favourable	Natural event
Abernethy Forest	SSSI	Scottish crossbill (<i>Loxia scotica</i>), breeding	Birds	Favourable	Over grazing
Abernethy Forest	SSSI	Subalpine dry heath	Upland habitat	Recovering	Burning
Abernethy Forest	SSSI	Subalpine dry heath	Upland habitat	Recovering	Under grazing
Abernethy Forest	SSSI	Vascular plant assemblage	Vascular plants	Favourable	Maintenance activities
Aldclune and Invervack Meadows	SSSI	Lowland calcareous grassland	Lowland grassland	Unfavourable	Invasive species
Aldclune and Invervack Meadows	SSSI	Lowland calcareous grassland	Lowland grassland	Unfavourable	Over grazing
Aldclune and Invervack Meadows	SSSI	Lowland calcareous grassland	Lowland grassland	Unfavourable	Under grazing
Alvie	SSSI	Hydromorphological mire range	Wetlands	Favourable	Invasive species
Alvie	SSSI	Invertebrate assemblage	Invertebrates	Favourable	Forestry operations
Alvie	SSSI	Invertebrate assemblage	Invertebrates	Favourable	Over grazing
Alvie	SSSI	Upland oak woodland	Woodland	Recovering	Over grazing
Beinn a' Ghlo	SSSI	Breeding bird assemblage	Birds	Favourable	Game/ fisheries management
Beinn a' Ghlo	SSSI	Vascular plant assemblage	Vascular plants	Favourable	Agricultural operations
Beinn a' Ghlo	SSSI	Vascular plant assemblage	Vascular plants	Favourable	Over grazing
Blair Atholl Meadow	SSSI	Lowland calcareous grassland	Lowland grassland	Recovering	Agricultural operations
Caenlochan	SSSI	Breeding bird assemblage	Birds	Favourable	Over grazing
Caenlochan	SSSI	Breeding bird assemblage	Birds	Favourable	Recreation/disturbance
Caenlochan	SSSI	Bryophyte assemblage	Non-vascular plants	Favourable	Trampling
Caenlochan	SSSI	Dystrophic loch	Freshwater habitats	Favourable	Over grazing

Caenlochan	SSSI	Montane assemblage	Upland habitat	Unfavourable	Over grazing
Caenlochan	SSSI	Vascular plant assemblage	Vascular plants	Unfavourable	Over grazing
Caenlochan	SSSI	Vascular plant assemblage	Vascular plants	Unfavourable	To be identified
Caenlochan	SSSI	Vascular plant assemblage	Vascular plants	Unfavourable	Trampling
Cairngorms	SSSI	Breeding bird assemblage	Birds	Favourable	Over grazing
Cairngorms	SSSI	Breeding bird assemblage	Birds	Favourable	Recreation/disturbance
Cairngorms	SSSI	Bryophyte assemblage	Non-vascular plants	Favourable	Game/ fisheries management
Cairngorms	SSSI	Bryophyte assemblage	Non-vascular plants	Favourable	Natural event
Cairngorms	SSSI	Bryophyte assemblage	Non-vascular plants	Favourable	Recreation/disturbance
Cairngorms	SSSI	Dotterel (<i>Charadrius morinellus</i>), breeding	Birds	Favourable	Over grazing
Cairngorms	SSSI	Dotterel (<i>Charadrius morinellus</i>), breeding	Birds	Favourable	Recreation/disturbance
Cairngorms	SSSI	Dotterel (<i>Charadrius morinellus</i>), breeding	Birds	Favourable	Trampling
Cairngorms	SSSI	Fluvial Geomorphology of Scotland	Earth sciences	Favourable	Climate Change
Cairngorms	SSSI	Fluvial Geomorphology of Scotland	Earth sciences	Favourable	Natural event
Cairngorms	SSSI	Fungi assemblage	Non-vascular plants	Favourable	Grazing - other
Cairngorms	SSSI	Fungi assemblage	Non-vascular plants	Favourable	Recreation/disturbance
Cairngorms	SSSI	Golden eagle (<i>Aquila chrysaetos</i>), breeding	Birds	Favourable	Recreation/disturbance
Cairngorms	SSSI	Invertebrate assemblage	Invertebrates	Favourable	Agricultural operations
Cairngorms	SSSI	Invertebrate assemblage	Invertebrates	Favourable	Other
Cairngorms	SSSI	Lichen assemblage	Non-vascular plants	Favourable	Grazing - other

Cairngorms	SSSI	Native pinewood	Woodland	Recovering	Over grazing
Cairngorms	SSSI	Native pinewood	Woodland	Recovering	Under grazing
Cairngorms	SSSI	Ptarmigan (<i>Lagopus muta</i>), breeding	Birds	Favourable	Recreation/disturbance
Cairngorms	SSSI	Quaternary of Scotland	Earth sciences	Favourable	Climate Change
Cairngorms	SSSI	Quaternary of Scotland	Earth sciences	Favourable	Natural event
Cairngorms	SSSI	Quaternary of Scotland	Earth sciences	Favourable	Recreation/disturbance
Cairngorms	SSSI	Snow bunting (<i>Plectrophenax nivalis</i>), breeding	Birds	Favourable	Other
Cairngorms	SSSI	Snow bunting (<i>Plectrophenax nivalis</i>), breeding	Birds	Favourable	Recreation/disturbance
Cairngorms	SSSI	Vascular plant assemblage	Vascular plants	Favourable	Natural event
Cairngorms	SSSI	Vascular plant assemblage	Vascular plants	Favourable	Over grazing
Cairnwell	SSSI	Alpine calcareous grassland	Upland habitat	Favourable	Climate Change
Cairnwell	SSSI	Alpine calcareous grassland	Upland habitat	Favourable	Grazing - other
Cairnwell	SSSI	Vascular plant assemblage	Vascular plants	Favourable	Grazing - other
Craig Leek	SSSI	Bryophyte assemblage	Non-vascular plants	Unfavourable	To be identified
Craig Leek	SSSI	Bryophyte assemblage	Non-vascular plants	Unfavourable	Under grazing
Craig Leek	SSSI	Native pinewood	Woodland	Favourable	Grazing - other
Craig Leek	SSSI	Upland assemblage	Upland habitat	Unfavourable	Forestry operations
Craig Leek	SSSI	Upland assemblage	Upland habitat	Unfavourable	Under grazing
Craig Leek	SSSI	Upland birch woodland	Woodland	Recovering	Over grazing
Craigellachie	SSSI	Moth assemblage	Invertebrates	Favourable	Other
Craigellachie	SSSI	Upland birch woodland	Woodland	Favourable	Burning
Crathie Wood	SSSI	Invertebrate assemblage	Invertebrates	Favourable	Agricultural operations
Crathie Wood	SSSI	Invertebrate assemblage	Invertebrates	Favourable	Over grazing

Crathie Wood	SSSI	Juniper scrub	Upland habitat	Favourable	Burning
Crathie Wood	SSSI	Juniper scrub	Upland habitat	Favourable	Plant pests and diseases
Crathie Wood	SSSI	Juniper scrub	Upland habitat	Favourable	Under grazing
Crathie Wood	SSSI	Native pinewood	Woodland	Favourable	Plant pests and diseases
Creag Clunie and the Lion's Face	SSSI	Bryophyte assemblage	Non-vascular plants	Favourable	Forestry operations
Creag Clunie and the Lion's Face	SSSI	Bryophyte assemblage	Non-vascular plants	Favourable	Proactive on-site management
Creag Clunie and the Lion's Face	SSSI	Bryophyte assemblage	Non-vascular plants	Favourable	Under grazing
Creag Clunie and the Lion's Face	SSSI	Capercaillie (<i>Tetrao urogallus</i>), breeding	Birds	Unfavourable	Over grazing
Creag Clunie and the Lion's Face	SSSI	Capercaillie (<i>Tetrao urogallus</i>), breeding	Birds	Unfavourable	Under grazing
Creag Clunie and the Lion's Face	SSSI	Elm Gyalecta lichen (<i>Gyalecta ulmi</i>)	Non-vascular plants	Favourable	Invasive species
Creag Clunie and the Lion's Face	SSSI	Native pinewood	Woodland	Recovering	Invasive species
Creag Clunie and the Lion's Face	SSSI	Native pinewood	Woodland	Recovering	Over grazing
Creag Dhubh	SSSI	Upland birch woodland	Woodland	Unfavourable	Over grazing
Creag Meagaidh	SSSI	Breeding bird assemblage	Birds	Favourable	Over grazing
Creag Meagaidh	SSSI	Breeding bird assemblage	Birds	Favourable	Recreation/disturbance
Creag Meagaidh	SSSI	Breeding bird assemblage	Birds	Favourable	Trampling
Creag Meagaidh	SSSI	Rocky slopes (includes inland cliff, rocky outcrops, chasmophytic vegetation)	Upland habitat	Favourable	Natural event
Creag Meagaidh	SSSI	Upland assemblage	Upland habitat	Favourable	Invasive species

Creag Meagaidh	SSSI	Vascular plant assemblage	Vascular plants	Favourable	Natural event
Creag nan Gamhainn	SSSI	Broad-leaved helleborine (<i>Epipactis helleborine</i>)	Vascular plants	Favourable	Maintenance activities
Creag nan Gamhainn	SSSI	Lowland calcareous grassland	Lowland grassland	Favourable	Invasive species
Creag nan Gamhainn	SSSI	Northern brown argus (<i>Aricia artaxerxes</i>)	Invertebrates	Favourable	Maintenance activities
Creag nan Gamhainn	SSSI	Springs (including flushes)	Wetlands	Unfavourable	Invasive species
Creag nan Gamhainn	SSSI	Springs (including flushes)	Wetlands	Unfavourable	Under grazing
Dalnabo Quarry	SSSI	Mineralogy of Scotland	Earth sciences	Favourable	Natural event
Dinnet Oakwood	SSSI	Upland oak woodland	Woodland	Favourable	Invasive species
Dinnet Oakwood	SSSI	Upland oak woodland	Woodland	Favourable	No proactive management
Dinnet Oakwood	SSSI	Upland oak woodland	Woodland	Favourable	Over grazing
Drumochter Hills	SSSI	Breeding bird assemblage	Birds	Favourable	Over grazing
Drumochter Hills	SSSI	Breeding bird assemblage	Birds	Favourable	Recreation/disturbance
Drumochter Hills	SSSI	Vascular plant assemblage	Vascular plants	Unfavourable	Burning
Drumochter Hills	SSSI	Vascular plant assemblage	Vascular plants	Unfavourable	Over grazing
Drumochter Hills	SSSI	Vascular plant assemblage	Vascular plants	Unfavourable	Water management
Eastern Cairngorms	SSSI	Breeding bird assemblage	Birds	Favourable	Burning
Eastern Cairngorms	SSSI	Breeding bird assemblage	Birds	Favourable	Game/ fisheries management
Eastern Cairngorms	SSSI	Bryophyte assemblage	Non-vascular plants	Unfavourable	Air pollution
Eastern Cairngorms	SSSI	Dystrophic and oligotrophic lochs	Freshwater habitats	Favourable	Game/ fisheries management
Eastern Cairngorms	SSSI	Fluvial Geomorphology of Scotland	Earth sciences	Favourable	Agricultural operations
Eastern Cairngorms	SSSI	Invertebrate assemblage	Invertebrates	Favourable	Forestry operations

Eastern Cairngorms	SSSI	Native pinewood	Woodland	Recovering	Natural event
Eastern Cairngorms	SSSI	Native pinewood	Woodland	Recovering	Over grazing
Eastern Cairngorms	SSSI	Quaternary of Scotland	Earth sciences	Favourable	Recreation/disturbance
Eastern Cairngorms	SSSI	Upland assemblage	Upland habitat	Unfavourable	Burning
Eastern Cairngorms	SSSI	Upland assemblage	Upland habitat	Unfavourable	Over grazing
Eastern Cairngorms	SSSI	Upland assemblage	Upland habitat	Unfavourable	Trampling
Eastern Cairngorms	SSSI	Vascular plant assemblage	Vascular plants	Favourable	Burning
Eastern Cairngorms	SSSI	Vascular plant assemblage	Vascular plants	Favourable	Over grazing
Eastern Cairngorms	SSSI	Vascular plant assemblage	Vascular plants	Favourable	Recreation/disturbance
Fafernie	SSSI	Breeding bird assemblage	Birds	Favourable	Grazing - other
Fafernie	SSSI	Breeding bird assemblage	Birds	Favourable	Recreation/disturbance
Fodderletter	SSSI	Lowland acid grassland	Lowland grassland	Favourable	Under grazing
Forest of Clunie	SSSI	Black grouse (<i>Tetrao tetrix</i>), breeding	Birds	Favourable	Burning
Forest of Clunie	SSSI	Breeding bird assemblage	Birds	Favourable	Water management
Forest of Clunie	SSSI	Hen harrier (<i>Circus cyaneus</i>), breeding	Birds	Unfavourable	Burning
Forest of Clunie	SSSI	Hen harrier (<i>Circus cyaneus</i>), breeding	Birds	Unfavourable	Natural event
Forest of Clunie	SSSI	Hen harrier (<i>Circus cyaneus</i>), breeding	Birds	Unfavourable	Over grazing
Forest of Clunie	SSSI	Short-eared owl (<i>Asio flammeus</i>), breeding	Birds	Unfavourable	Burning
Garbh Choire	SSSI	Alpine flush	Upland habitat	Favourable	Over grazing
Garbh Choire	SSSI	Bryophyte assemblage	Non-vascular plants	Recovering	Over grazing
Garbh Choire	SSSI	Snowbed	Upland habitat	Unfavourable	Over grazing
Garbh Choire	SSSI	Spring-head, rill and flush	Upland habitat	Recovering	Over grazing
Garbh Choire	SSSI	Upland assemblage	Upland habitat	Unfavourable	Natural event

Garbh Choire	SSSI	Upland assemblage	Upland habitat	Unfavourable	Over grazing
Garbh Choire	SSSI	Upland assemblage	Upland habitat	Unfavourable	Trampling
Garbh Choire	SSSI	Vascular plant assemblage	Vascular plants	Recovering	Over grazing
Glas Tulaichean	SSSI	Vascular plant assemblage	Vascular plants	Favourable	Natural event
Glen Callater	SSSI	Alpine blue-sow-thistle (<i>Cicerbita alpina</i>)	Vascular plants	Favourable	Climate Change
Glen Callater	SSSI	Alpine heath	Upland habitat	Favourable	Trampling
Glen Callater	SSSI	Blanket bog	Upland habitat	Unfavourable	Natural event
Glen Callater	SSSI	Blanket bog	Upland habitat	Unfavourable	Trampling
Glen Callater	SSSI	Breeding bird assemblage	Birds	Favourable	Game/ fisheries management
Glen Callater	SSSI	Oligotrophic loch	Freshwater habitats	Favourable	Invasive species
Glen Callater	SSSI	Spring-head, rill and flush	Upland habitat	Favourable	Over grazing
Glen Callater	SSSI	Spring-head, rill and flush	Upland habitat	Favourable	Trampling
Glen Callater	SSSI	Upland assemblage	Upland habitat	Unfavourable	Burning
Glen Callater	SSSI	Upland assemblage	Upland habitat	Unfavourable	Over grazing
Glen Callater	SSSI	Vascular plant assemblage	Vascular plants	Unfavourable	Natural event
Glen Callater	SSSI	Vascular plant assemblage	Vascular plants	Unfavourable	Over grazing
Glen Ey Gorge	SSSI	Subalpine dry heath	Upland habitat	Favourable	Over grazing
Glen Fender Meadows	SSSI	Lowland dry heath	Lowland heath	Recovering	Agricultural operations
Glen Fender Meadows	SSSI	Lowland dry heath	Lowland heath	Recovering	Over grazing
Glen Fender Meadows	SSSI	Springs (including flushes)	Wetlands	Recovering	Under grazing
Glen Fender Meadows	SSSI	Vascular plant assemblage	Vascular plants	Favourable	Over grazing
Glen Tanar	SSSI	Fungi assemblage	Non-vascular plants	Favourable	Forestry operations

Glenmore Forest	SSSI	Capercaillie (<i>Tetrao urogallus</i>), breeding	Birds	Favourable	Proactive on-site management
Glenmore Forest	SSSI	Narrow-headed ant (<i>Formica exsecta</i>)	Invertebrates	Favourable	Conservation activities
Glenmore Forest	SSSI	Narrow-headed ant (<i>Formica exsecta</i>)	Invertebrates	Favourable	Inter-specific competition
Glenmore Forest	SSSI	Narrow-headed ant (<i>Formica exsecta</i>)	Invertebrates	Favourable	No proactive management
Glenmore Forest	SSSI	Native pinewood	Woodland	Favourable	Game/ fisheries management
Glenmore Forest	SSSI	Scottish crossbill (<i>Loxia scotica</i>), breeding	Birds	Favourable	Over grazing
Green Hill of Strathdon	SSSI	Calaminarian grassland and serpentine heath	Upland habitat	Favourable	Over grazing
Green Hill of Strathdon	SSSI	Moorland juniper	Upland habitat	Favourable	Burning
Green Hill of Strathdon	SSSI	Moorland juniper	Upland habitat	Favourable	Natural event
Green Hill of Strathdon	SSSI	Subalpine dry heath	Upland habitat	Favourable	Burning
Green Hill of Strathdon	SSSI	Subalpine dry heath	Upland habitat	Favourable	Grazing - other
Inchrory	SSSI	Northern brown argus (<i>Aricia artaxerxes</i>)	Invertebrates	Favourable	Under grazing
Inchrory	SSSI	Upland assemblage	Upland habitat	Unfavourable	Burning
Inchrory	SSSI	Upland assemblage	Upland habitat	Unfavourable	Over grazing
Inchrory	SSSI	Upland assemblage	Upland habitat	Unfavourable	Trampling
Inchrory	SSSI	Upland assemblage	Upland habitat	Unfavourable	Under grazing
Inchrory	SSSI	Vascular plant assemblage	Vascular plants	Favourable	Burning
Inchrory	SSSI	Vascular plant assemblage	Vascular plants	Favourable	Over grazing
Inchrory	SSSI	Vascular plant assemblage	Vascular plants	Favourable	Trampling
Ladder Hills	SSSI	Alpine heath	Upland habitat	Favourable	Game/ fisheries management
Ladder Hills	SSSI	Blanket bog	Upland habitat	Favourable	Agricultural operations

Ladder Hills	SSSI	Blanket bog	Upland habitat	Favourable	Burning
Ladder Hills	SSSI	Subalpine dry heath	Upland habitat	Unfavourable	Burning
Ladder Hills	SSSI	Upland assemblage	Upland habitat	Unfavourable	Agricultural operations
Ladder Hills	SSSI	Upland assemblage	Upland habitat	Unfavourable	Burning
Loch Brandy	SSSI	Bryophyte assemblage	Non-vascular plants	Favourable	Recreation/disturbance
Loch Brandy	SSSI	Oligotrophic loch	Freshwater habitats	Favourable	Recreation/disturbance
Loch Etteridge	SSSI	Quaternary of Scotland	Earth sciences	Favourable	Agricultural operations
Loch Etteridge	SSSI	Quaternary of Scotland	Earth sciences	Favourable	Extraction
Loch Etteridge	SSSI	Quaternary of Scotland	Earth sciences	Favourable	Recreation/disturbance
Loch Vaa	SSSI	Goldeneye (<i>Bucephala clangula</i>), breeding	Birds	Unfavourable	Recreation/disturbance
Loch Vaa	SSSI	Slavonian grebe (<i>Podiceps auritus</i>), breeding	Birds	Unfavourable	Game/ fisheries management
Loch Vaa	SSSI	Slavonian grebe (<i>Podiceps auritus</i>), breeding	Birds	Unfavourable	Natural event
Loch Vaa	SSSI	Slavonian grebe (<i>Podiceps auritus</i>), breeding	Birds	Unfavourable	Recreation/disturbance
Monadhliath	SSSI	Blanket bog	Upland habitat	Unfavourable	Trampling
Monadhliath	SSSI	Breeding bird assemblage	Birds	Favourable	Over grazing
Monadhliath	SSSI	Dotterel (<i>Charadrius morinellus</i>), breeding	Birds	Unfavourable	Over grazing
Monadhliath	SSSI	Dotterel (<i>Charadrius morinellus</i>), breeding	Birds	Unfavourable	Recreation/disturbance
Monadhliath	SSSI	Upland assemblage	Upland habitat	Favourable	Grazing - other
Monadhliath	SSSI	Vascular plant assemblage	Vascular plants	Favourable	Game/ fisheries management
Monadhliath	SSSI	Vascular plant assemblage	Vascular plants	Favourable	Natural event
Monadhliath	SSSI	Vascular plant assemblage	Vascular plants	Favourable	Over grazing
Monadhliath	SSSI	Vascular plant assemblage	Vascular plants	Favourable	Trampling

Morrone Birkwood	SSSI	Alpine heath	Upland habitat	Favourable	Over grazing
Morrone Birkwood	SSSI	Invertebrate assemblage	Invertebrates	Favourable	Under grazing
Morrone Birkwood	SSSI	Juniper scrub	Upland habitat	Recovering	Over grazing
Morrone Birkwood	SSSI	Upland birch woodland	Woodland	Recovering	Over grazing
Morrone Birkwood	SSSI	Vascular plant assemblage	Vascular plants	Favourable	Under grazing
Morven and Mullachdubh	SSSI	Alpine heath	Upland habitat	Favourable	Game/ fisheries management
Morven and Mullachdubh	SSSI	Blanket bog	Upland habitat	Favourable	Burning
Morven and Mullachdubh	SSSI	Blanket bog	Upland habitat	Favourable	Game/ fisheries management
Morven and Mullachdubh	SSSI	Blanket bog	Upland habitat	Favourable	Under grazing
Morven and Mullachdubh	SSSI	Breeding bird assemblage	Birds	Favourable	Burning
Morven and Mullachdubh	SSSI	Breeding bird assemblage	Birds	Favourable	Game/ fisheries management
Morven and Mullachdubh	SSSI	Breeding bird assemblage	Birds	Favourable	Wildlife crime
Morven and Mullachdubh	SSSI	Moorland juniper	Upland habitat	Favourable	Over grazing
Morven and Mullachdubh	SSSI	Moorland juniper	Upland habitat	Favourable	Plant pests and diseases
Morven and Mullachdubh	SSSI	Moorland juniper	Upland habitat	Favourable	Under grazing
Morven and Mullachdubh	SSSI	Upland assemblage	Upland habitat	Unfavourable	Burning
Morven and	SSSI	Upland assemblage	Upland habitat	Unfavourable	Game/ fisheries

Mullachdubh					management
Morven and Mullachdubh	SSSI	Upland assemblage	Upland habitat	Unfavourable	Under grazing
Morven and Mullachdubh	SSSI	Vascular plant assemblage	Vascular plants	Favourable	Burning
Morven and Mullachdubh	SSSI	Vascular plant assemblage	Vascular plants	Favourable	Over grazing
Muir of Dinnet	SSSI	Hydromorphological mire range	Wetlands	Favourable	Invasive species
Muir of Dinnet	SSSI	Lowland dry heath	Lowland heath	Favourable	No proactive management
Muir of Dinnet	SSSI	Lowland wet heath	Lowland heath	Unfavourable	Over grazing
Muir of Dinnet	SSSI	Oligo-mesotrophic loch	Freshwater habitats	Favourable	Invasive species
Muir of Dinnet	SSSI	Oligo-mesotrophic loch	Freshwater habitats	Favourable	Water quality
Muir of Dinnet	SSSI	Quaternary of Scotland	Earth sciences	Favourable	Forestry operations
North Rothiemurchus Pinewood	SSSI	Capercaillie (<i>Tetrao urogallus</i>), breeding	Birds	Favourable	Proactive on-site management
North Rothiemurchus Pinewood	SSSI	Fungi assemblage	Non-vascular plants	Favourable	Forestry operations
North Rothiemurchus Pinewood	SSSI	Fungi assemblage	Non-vascular plants	Favourable	Grazing - other
North Rothiemurchus Pinewood	SSSI	Fungi assemblage	Non-vascular plants	Favourable	Recreation/disturbance
North Rothiemurchus Pinewood	SSSI	Fungi assemblage	Non-vascular plants	Favourable	Under grazing
North Rothiemurchus Pinewood	SSSI	Lichen assemblage	Non-vascular plants	Favourable	Grazing - other

North Rothiemurchus Pinewood	SSSI	Native pinewood	Woodland	Favourable	Invasive species
North Rothiemurchus Pinewood	SSSI	Osprey (<i>Pandion haliaetus</i>), breeding	Birds	Recovering	Other
North Rothiemurchus Pinewood	SSSI	Scottish crossbill (<i>Loxia scotica</i>), breeding	Birds	Favourable	Over grazing
North Rothiemurchus Pinewood	SSSI	Vascular plant assemblage	Vascular plants	Favourable	Under grazing
Northern Corries, Cairngorms	SSSI	Breeding bird assemblage	Birds	Favourable	Other
Northern Corries, Cairngorms	SSSI	Breeding bird assemblage	Birds	Favourable	Recreation/disturbance
Pass of Killiecrankie	SSSI	Upland oak woodland	Woodland	Recovering	Invasive species
River Feshie	SSSI	Fluvial Geomorphology of Scotland	Earth sciences	Favourable	Flood defence/coastal defence works
River Feshie	SSSI	Fluvial Geomorphology of Scotland	Earth sciences	Favourable	Natural event
River Feshie	SSSI	Quaternary of Scotland	Earth sciences	Favourable	Natural event
River Spey	SSSI	Atlantic salmon (<i>Salmo salar</i>)	Fish	Favourable	Invasive species
River Spey	SSSI	Freshwater pearl mussel (<i>Margaritifera margaritifera</i>)	Invertebrates	Unfavourable	Extraction
River Spey	SSSI	Freshwater pearl mussel (<i>Margaritifera margaritifera</i>)	Invertebrates	Unfavourable	Invasive species
River Spey	SSSI	Freshwater pearl mussel (<i>Margaritifera margaritifera</i>)	Invertebrates	Unfavourable	Water quality
River Spey	SSSI	Freshwater pearl mussel (<i>Margaritifera margaritifera</i>)	Invertebrates	Unfavourable	Wildlife crime
River Spey	SSSI	Otter (<i>Lutra lutra</i>)	Mammals (except marine)	Favourable	Recreation/disturbance
River Spey - Insh Marshes	SSSI	Arctic charr (<i>Salvelinus alpinus</i>)	Fish	Favourable	Game/ fisheries management
River Spey - Insh Marshes	SSSI	Flood-plain fen	Wetlands	Favourable	Trampling

River Spey - Insh Marshes	SSSI	Flood-plain fen	Wetlands	Favourable	Water management
River Spey - Insh Marshes	SSSI	Invertebrate assemblage	Invertebrates	Favourable	Over grazing
River Spey - Insh Marshes	SSSI	Mesotrophic loch	Freshwater habitats	Favourable	Invasive species
River Spey - Insh Marshes	SSSI	Mesotrophic loch	Freshwater habitats	Favourable	Recreation/disturbance
River Spey - Insh Marshes	SSSI	Osprey (<i>Pandion haliaetus</i>), breeding	Birds	Favourable	Recreation/disturbance
River Spey - Insh Marshes	SSSI	Otter (<i>Lutra lutra</i>)	Mammals (except marine)	Favourable	Recreation/disturbance
River Spey - Insh Marshes	SSSI	Vascular plant assemblage	Vascular plants	Favourable	Invasive species
River Spey - Insh Marshes	SSSI	Vascular plant assemblage	Vascular plants	Favourable	Over grazing
River Spey - Insh Marshes	SSSI	Whooper swan (<i>Cygnus cygnus</i>), non-breeding	Birds	Favourable	Recreation/disturbance